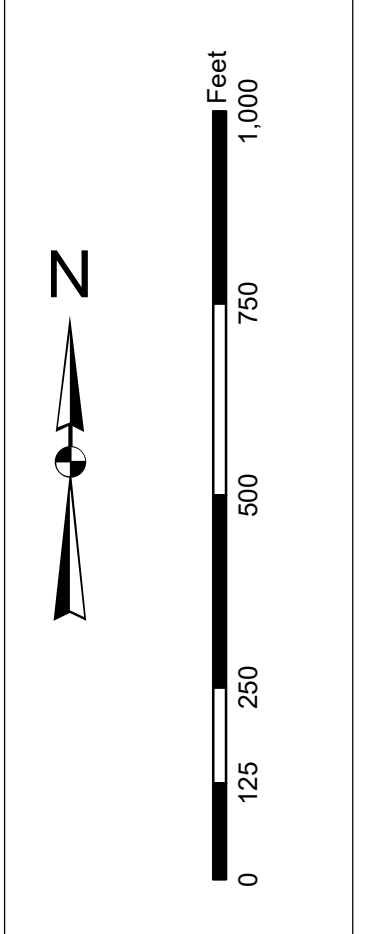


**Production Notes:**  
 1. This chart is produced by the Charleston District Office, U.S. Army Corps of Engineers, Charleston District Office, 3000 River Road, Charleston, SC 29405.  
 2. This chart is based on the following data:  
 a. Hydrographic Survey Data  
 b. Bathymetric Data  
 c. Sonar Data  
 d. Other Data  
 3. Soundings are in feet and meters.  
 4. All other data are in feet and meters.  
 5. All other data are in feet and meters.  
 6. All other data are in feet and meters.  
 7. All other data are in feet and meters.  
 8. All other data are in feet and meters.  
 9. All other data are in feet and meters.  
 10. All other data are in feet and meters.



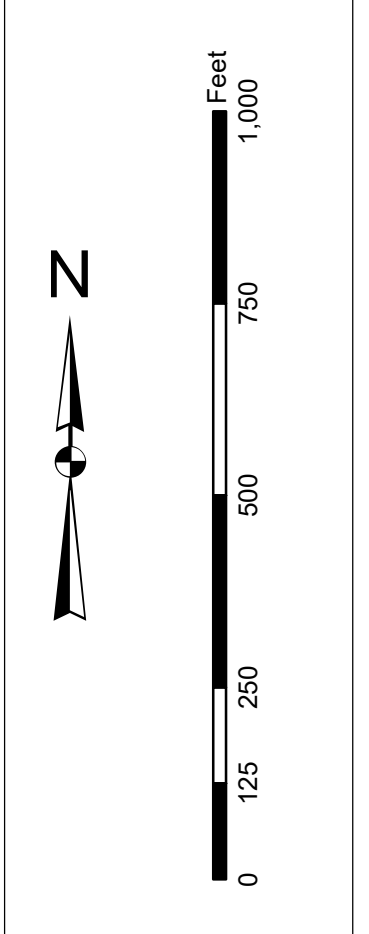
**Legend**

Symbol/Color	Description
Blue	Water
Green	Marsh
Yellow	Land
Red	Obstruction
Black	Navigation Channel
White	Other
Blue dashed line	Obstruction
Black dashed line	Obstruction
Black solid line	Obstruction
Black solid line with dots	Obstruction
Black solid line with triangles	Obstruction
Black solid line with squares	Obstruction
Black solid line with circles	Obstruction
Black solid line with diamonds	Obstruction
Black solid line with crosses	Obstruction
Black solid line with asterisks	Obstruction
Black solid line with pluses	Obstruction
Black solid line with x's	Obstruction
Black solid line with o's	Obstruction
Black solid line with dots	Obstruction
Black solid line with triangles	Obstruction
Black solid line with squares	Obstruction
Black solid line with circles	Obstruction
Black solid line with diamonds	Obstruction
Black solid line with crosses	Obstruction
Black solid line with asterisks	Obstruction
Black solid line with pluses	Obstruction
Black solid line with x's	Obstruction
Black solid line with o's	Obstruction

U.S. Army Corps of Engineers Charleston District Office Charleston, South Carolina	Survey Date: 19 FEB 2019	Production Date: 22 Feb 2019
Project Reference Number: 13000	Scale: 1 inch = 250 feet	Projection: NAD 1983 StatePlane South Carolina FIPS 3200 Feet
Survey Type: CONDITION	Author: CESAC/GIS/USACE/ARMY/MIL	

**Charleston Upper Harbor Channel Survey**  
 The information depicted on this map represents the results of surveys made on the dates indicated and can only be used for the purposes for which it was prepared. It is not to be used for any other purpose without the express approval of the U.S. Army Corps of Engineers, Charleston District Office.  
 Concluded on: 19 FEB 2019  
 Charleston, South Carolina

In accordance with the U.S. Army Corps of Engineers, Charleston District Office, Special Data Branch, the information on this map represents the results of surveys made on the dates indicated and conditions existing at that time. It is not intended to be used for navigation. No warranty is made by the Corps of Engineers for any use of this information other than that for which it was prepared. The Corps of Engineers is not responsible for any errors or omissions in this information.

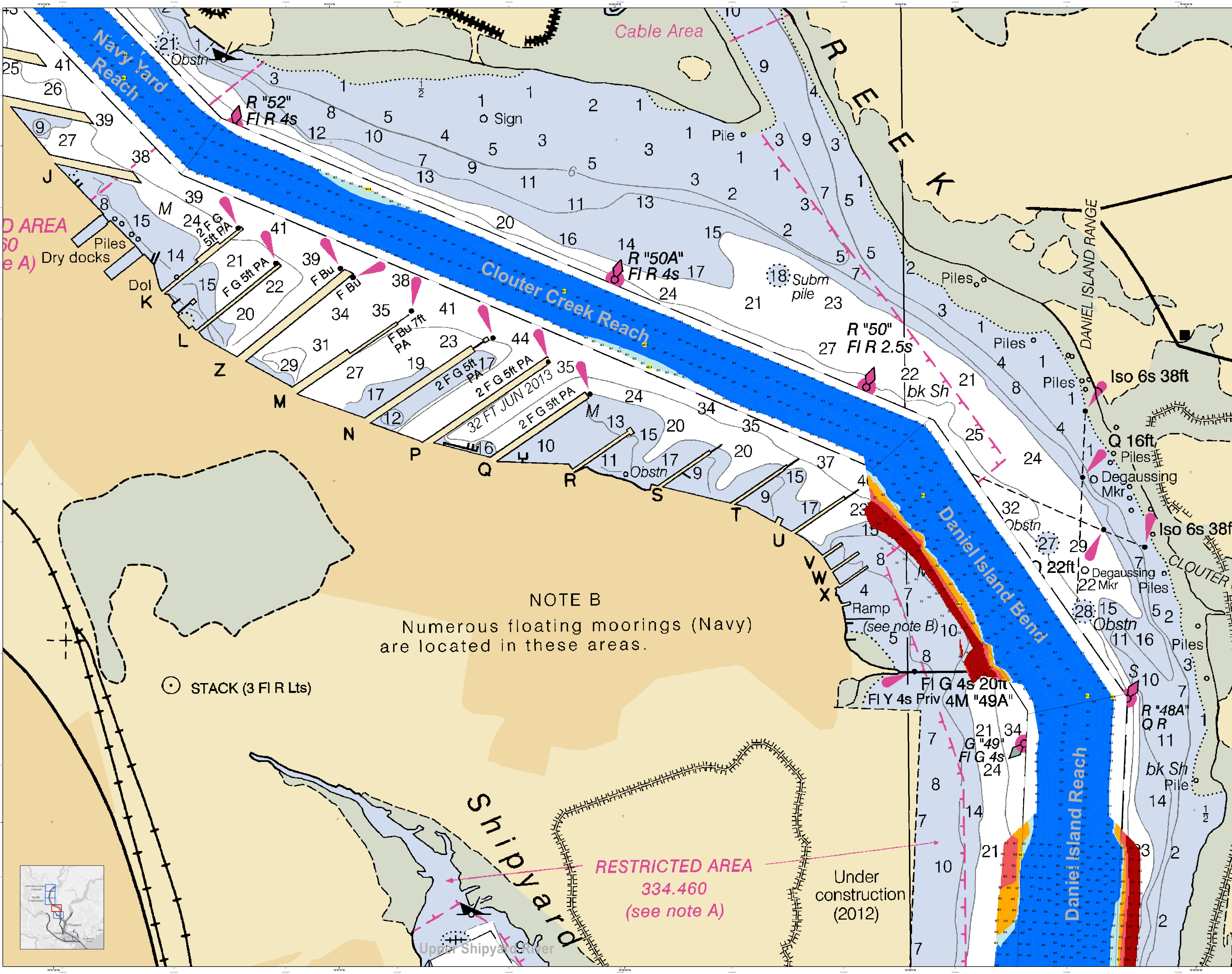


**Legend**

Symbol	Description
(Color swatches)	Water Depth
(Color swatches)	Water Level
(Color swatches)	Water Temperature
(Color swatches)	Water Transparency
(Color swatches)	Water Quality
(Color swatches)	Water Velocity
(Color swatches)	Water Current
(Color swatches)	Water Direction
(Color swatches)	Water Surface
(Color swatches)	Water Bottom
(Color swatches)	Water Column
(Color swatches)	Water Column Temperature
(Color swatches)	Water Column Transparency
(Color swatches)	Water Column Quality
(Color swatches)	Water Column Velocity
(Color swatches)	Water Column Current
(Color swatches)	Water Column Direction
(Color swatches)	Water Column Surface
(Color swatches)	Water Column Bottom
(Color swatches)	Water Column Column Temperature
(Color swatches)	Water Column Column Transparency
(Color swatches)	Water Column Column Quality
(Color swatches)	Water Column Column Velocity
(Color swatches)	Water Column Column Current
(Color swatches)	Water Column Column Direction
(Color swatches)	Water Column Column Surface
(Color swatches)	Water Column Column Bottom

Designed By: U.S. Army Corps of Engineers, Charleston District Office, Special Data Branch, Savannah River Branch, Savannah River Plant, Aiken, SC 29801	Survey Date: 19 FEB 2019	Production Date: 12 FEB 2019
Reviewed By: U.S. Army Corps of Engineers, Charleston District Office, Special Data Branch, Savannah River Plant, Aiken, SC 29801	Project Reference Number: 334.460	Sheet Number: C002
Scale: 1 inch = 250 feet	Scale: 1 inch = 250 feet	Scale: 1 inch = 250 feet
Projection: NAD 83 StatePlane South Carolina FIPS 3200 Feet	Projection: NAD 83 StatePlane South Carolina FIPS 3200 Feet	Projection: NAD 83 StatePlane South Carolina FIPS 3200 Feet

Charleston, South Carolina

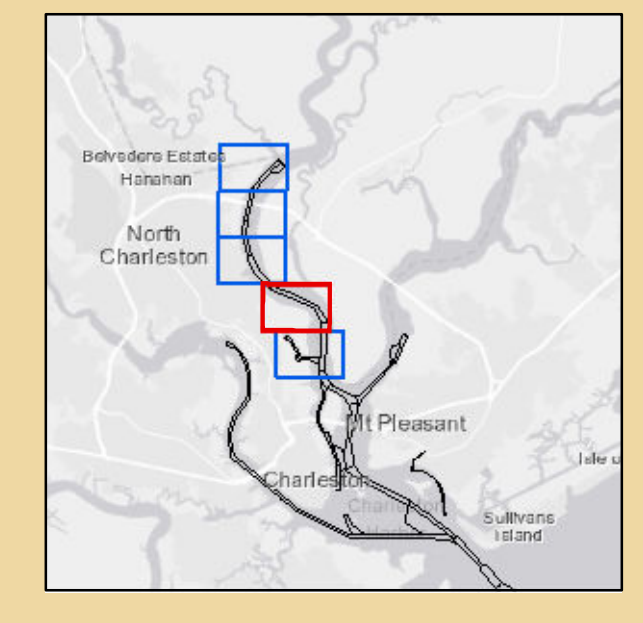


**NOTE B**  
Numerous floating moorings (Navy) are located in these areas.

⊙ STACK (3 FI R Lts)

**RESTRICTED AREA**  
334.460  
(see note A)

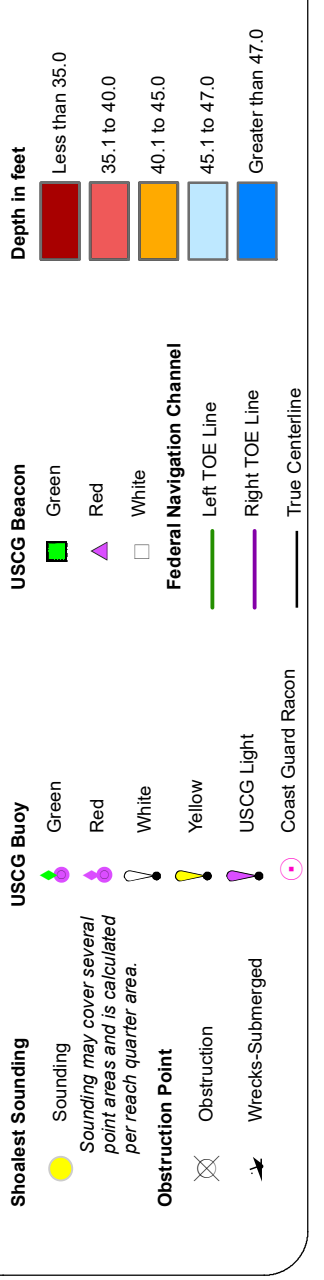
Under construction  
(2012)



**Production Notes:**  
This map is the property of the U.S. Army Corps of Engineers. No part of this map may be reproduced, stored in a retrieval system, or transmitted in any form or by any means, electronic, mechanical, photocopying, recording, or by any information storage or retrieval system, without prior written permission from the U.S. Army Corps of Engineers. This map was prepared from data supplied by the project sponsor. No liability is assumed for errors or omissions. This map is for general information only. It is not to be used for navigation. No warranty is made as to the accuracy of the data. The user is responsible for determining the accuracy of the data for their intended use.

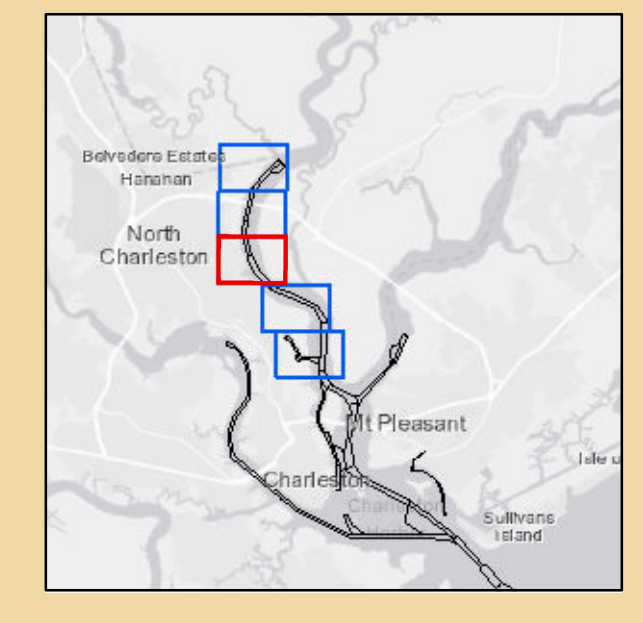
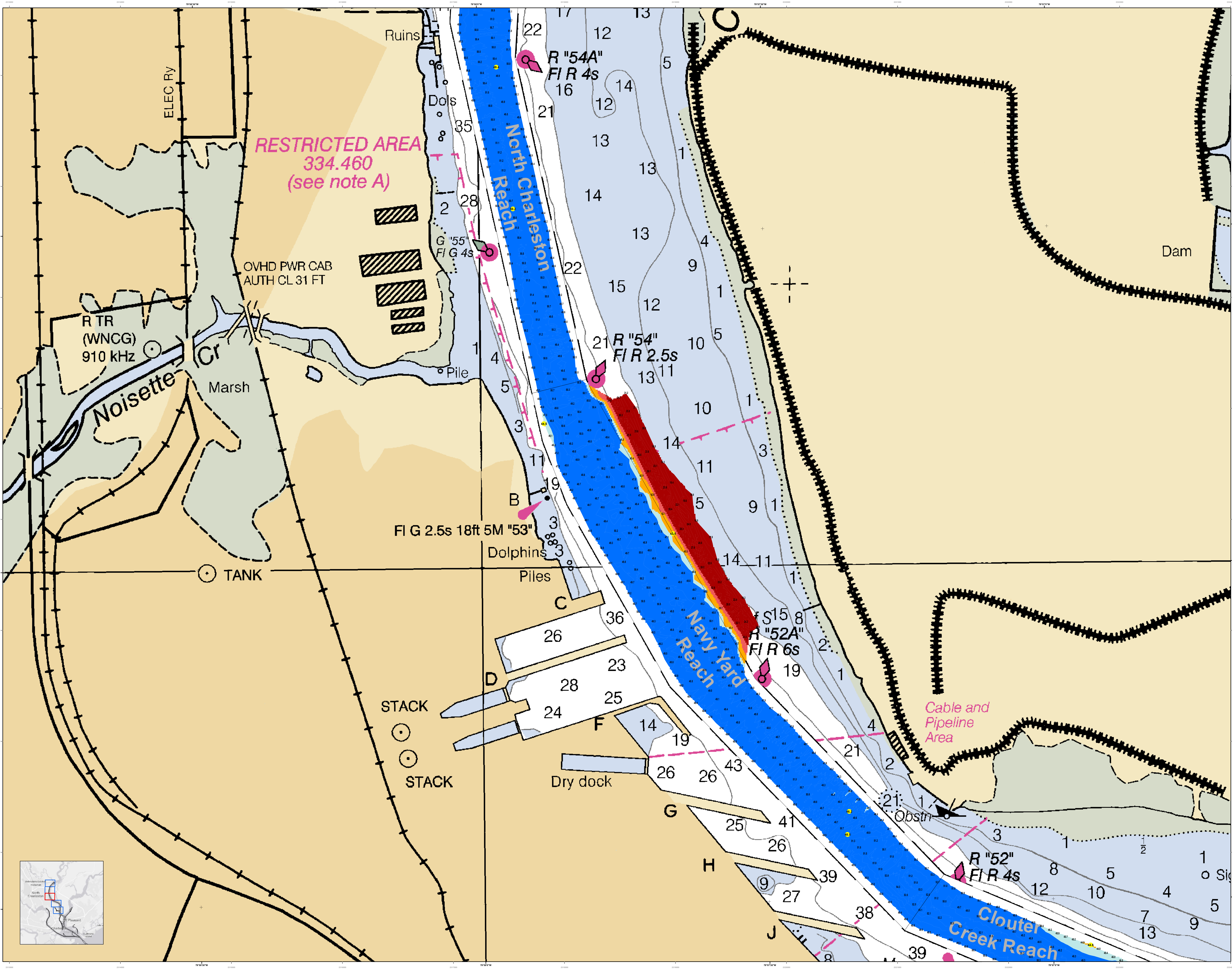
**Legend:**  

- Soundings: 1 to 50
- Obstructions: 1 to 5
- Restrictions: 1 to 5
- Other: 1 to 5



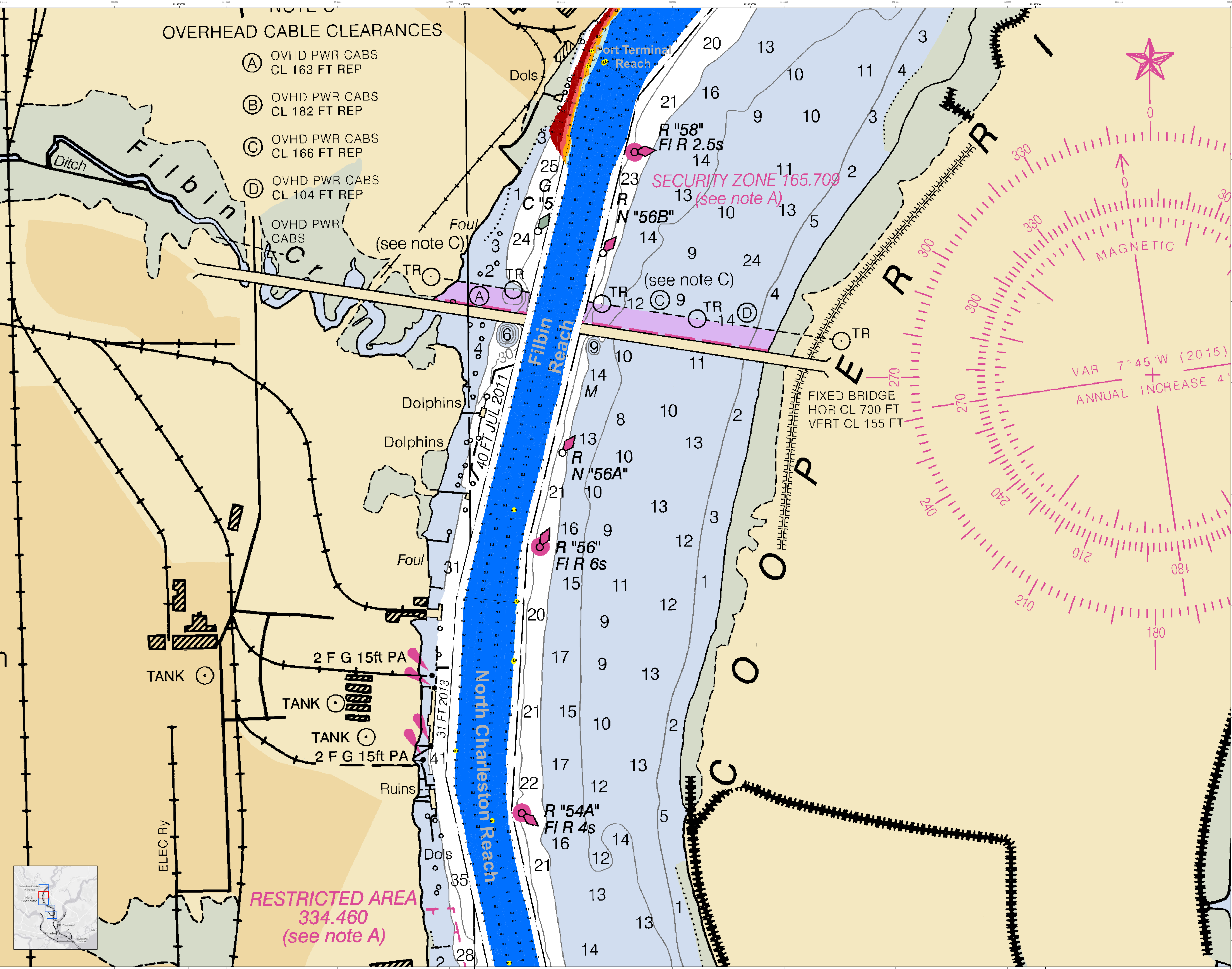
Designed By:	Hydro Software v3.82	Survey Date:	19 FEB 2019	Production Date:	22 Feb 2019
Reviewed By:	1:50,000	Project Reference Number:	PC000010		
Scale:	1 inch = 250 feet	Revision:	CONDITION		
U.S. Army Corps of Engineers	CHARLESTON DISTRICT	Project Name:	Charleston Harbor Channel Survey		
SAVANNAH DISTRICT	CHARLESTON DISTRICT	Project Number:	65400		
CHARLESTON DISTRICT	CHARLESTON DISTRICT	Project Location:	Charleston, South Carolina		
CHARLESTON DISTRICT	CHARLESTON DISTRICT	Project Date:	19 FEB 2019		

**Charleston Upper Harbor Channel Survey**  
The information shown on this map represents the results of surveys made on the dates indicated and is not to be used for navigation. It is general information only. No warranty is made as to the accuracy of the data. The user is responsible for determining the accuracy of the data for their intended use.  
Concluded on: 19 FEB 2019  
Charleston, South Carolina

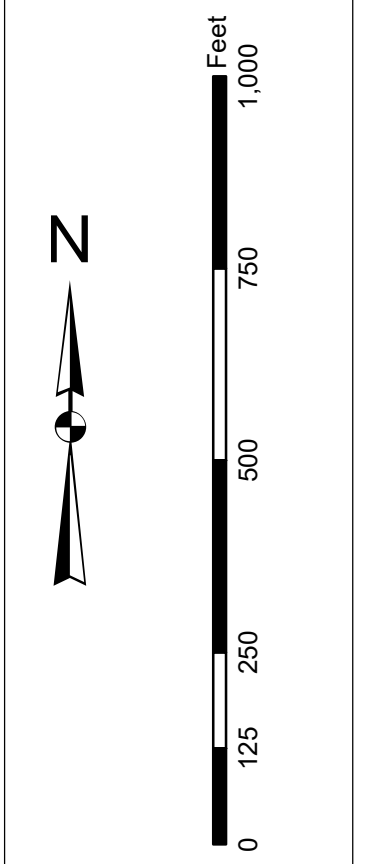


# OVERHEAD CABLE CLEARANCES

- (A) OVHD PWR CABS  
CL 163 FT REP
- (B) OVHD PWR CABS  
CL 182 FT REP
- (C) OVHD PWR CABS  
CL 166 FT REP
- (D) OVHD PWR CABS  
CL 104 FT REP



**Production Notes:**  
 1. This is a preliminary chart. It is not to be used for navigation.  
 2. There are no soundings in this area.  
 3. Obstructions are shown as they were at the time of the survey.  
 4. Obstructions are shown as they were at the time of the survey.  
 5. Obstructions are shown as they were at the time of the survey.  
 6. Obstructions are shown as they were at the time of the survey.  
 7. Obstructions are shown as they were at the time of the survey.  
 8. Obstructions are shown as they were at the time of the survey.  
 9. Obstructions are shown as they were at the time of the survey.  
 10. Obstructions are shown as they were at the time of the survey.



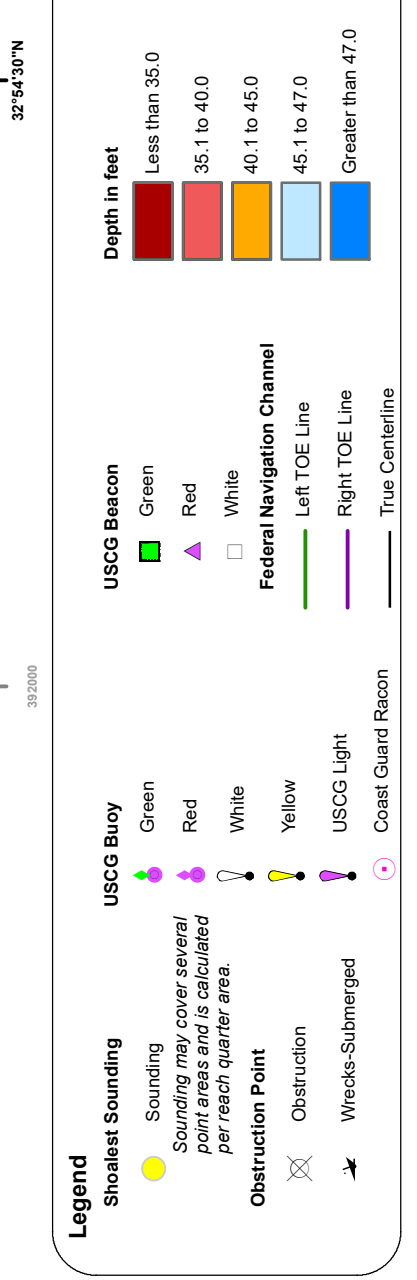
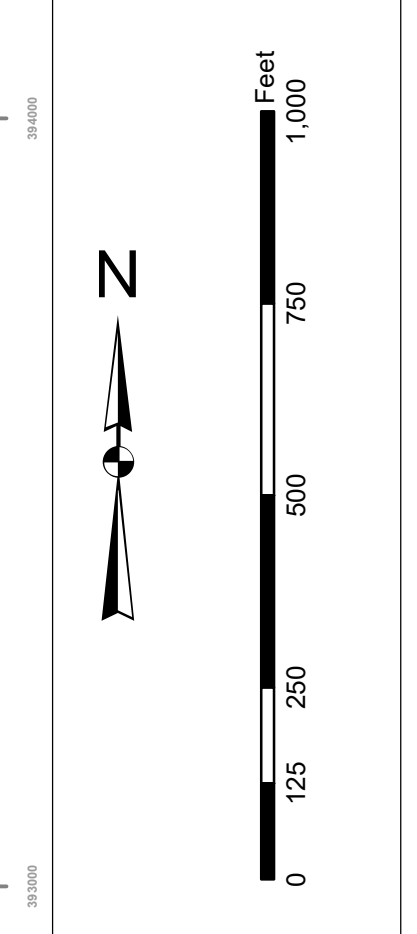
**Legend**

Symbol	Description
Blue line	Channel
Red line	Obstruction
Green line	Obstruction
Yellow line	Obstruction
Black line	Obstruction
White line	Obstruction
Blue circle	Obstruction
Red circle	Obstruction
Green circle	Obstruction
Yellow circle	Obstruction
Black circle	Obstruction
White circle	Obstruction
Blue square	Obstruction
Red square	Obstruction
Green square	Obstruction
Yellow square	Obstruction
Black square	Obstruction
White square	Obstruction

Designed By: U.S. Army Corps of Engineers, Charleston District	Survey Date: 19 FEB 2019	Production Date: 22 FEB 2019
Reviewed By: U.S. Army Corps of Engineers, Charleston District	Project Reference Number: 13000	Sheet Number: 0002
Scale: 1 inch = 250 feet	Projection: NAD 1983 StatePlane South Carolina FIPS 3200 Feet	

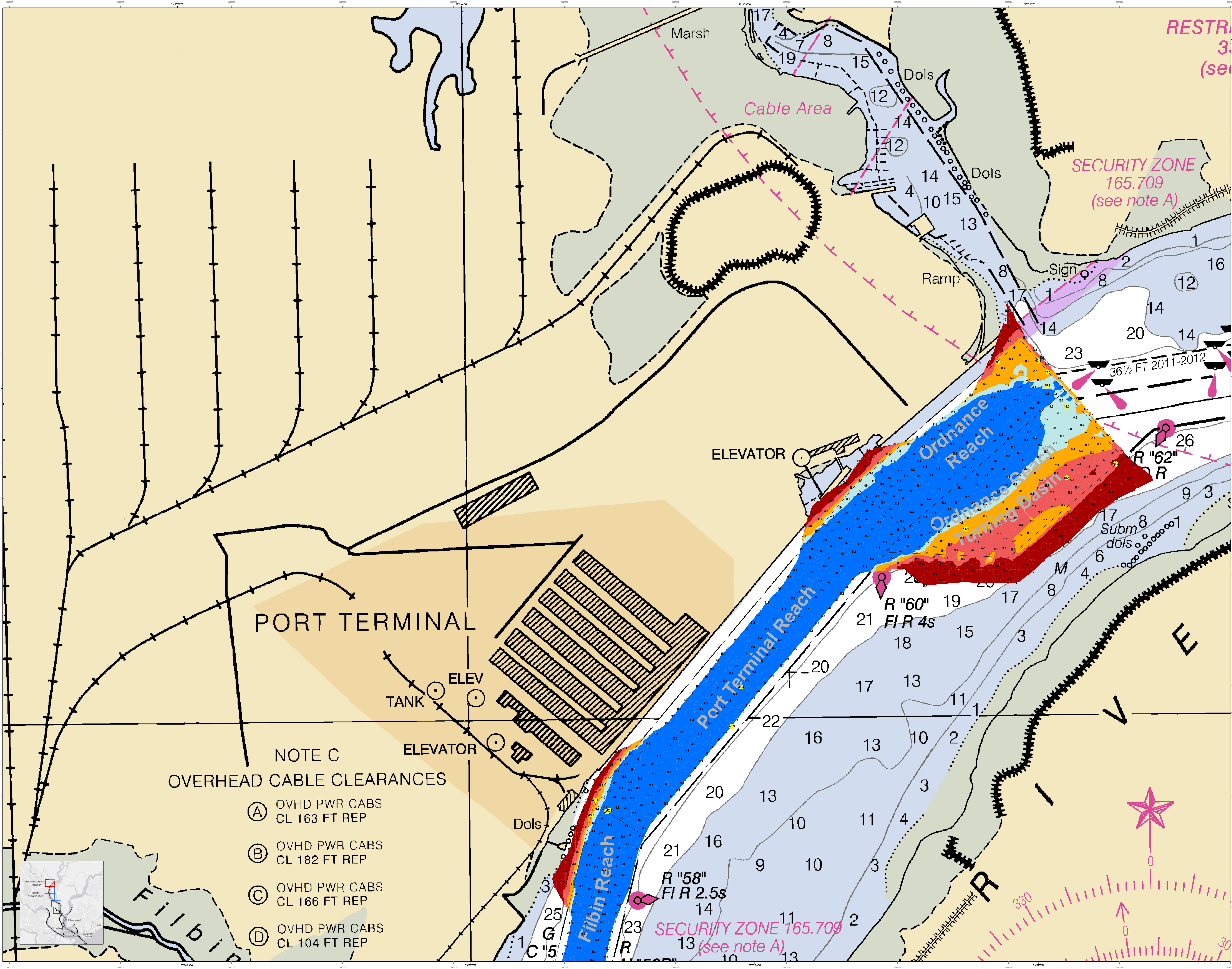
**Charleston Upper Harbor Channel Survey**  
 The information depicted on this map represents the results of surveys made on the dates indicated and conditions existing at that time.  
 Concluded on: 19 FEB 2019  
 Charleston, South Carolina

**Production Notes:**  
 1. This map is a preliminary design and is not to be used for construction purposes.  
 2. All dimensions are in feet unless otherwise noted.  
 3. All elevations are in feet unless otherwise noted.  
 4. All bearings are in degrees, minutes, and seconds unless otherwise noted.  
 5. All bearings are true bearings unless otherwise noted.  
 6. All bearings are to be used for navigation.  
 7. All bearings are to be used for navigation.



Designed By:	Survey Date:	Production Date:
Reviewed By:	19 FEB 2019	19 FEB 2019
Checked By:	19 FEB 2019	19 FEB 2019
Project Reference Number:	165.709	165.709
Scale:	1 inch = 250 feet	1 inch = 250 feet
Projection:	NAD 1983 StatePlane South Carolina FIPS 3200 Feet	NAD 1983 StatePlane South Carolina FIPS 3200 Feet

**Charleston Upper Harbor Channel Survey**  
 The information depicted on this map represents the results of surveys made on the dates indicated and conditions existing at that time.  
 Concluded on: 19 FEB 2019  
 Charleston, South Carolina



**NOTE C**  
OVERHEAD CABLE CLEARANCES

- (A) OVHD PWR CABS  
CL 163 FT REP
- (B) OVHD PWR CABS  
CL 182 FT REP
- (C) OVHD PWR CABS  
CL 166 FT REP
- (D) OVHD PWR CABS  
CL 104 FT REP

