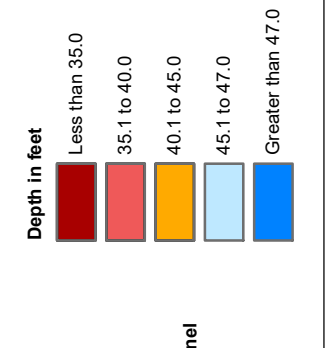
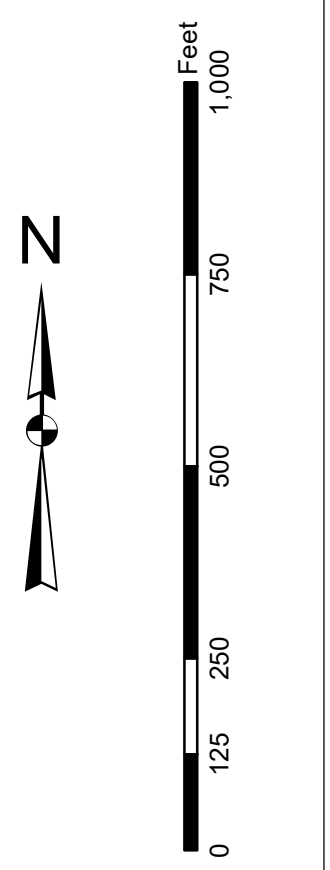


In its capacity as the U.S. Army Corps of Engineers, Charleston District Office, Special Data Branch has been authorized to conduct this hydrographic and bathymetric survey and to disseminate the resulting information in electronic and printed formats. The information presented in this document is for informational purposes only. It is not intended for navigation or for any other purpose. The information presented is based on the best available data and is subject to change without notice. The information presented is not to be used for navigation or for any other purpose. The information presented is not to be used for navigation or for any other purpose. The information presented is not to be used for navigation or for any other purpose.

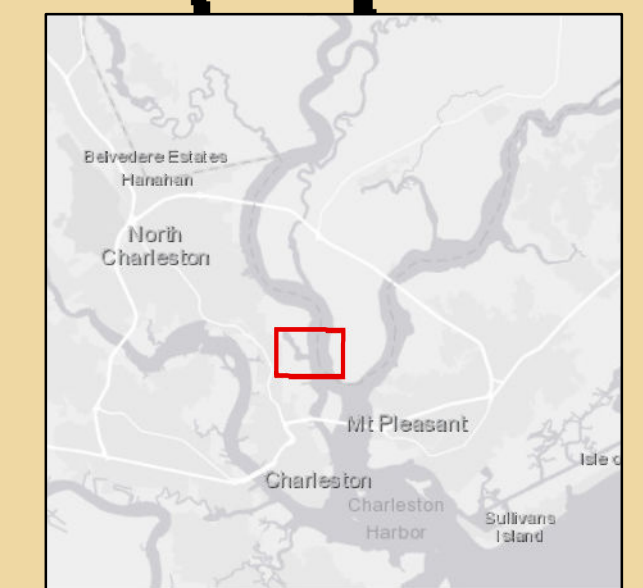
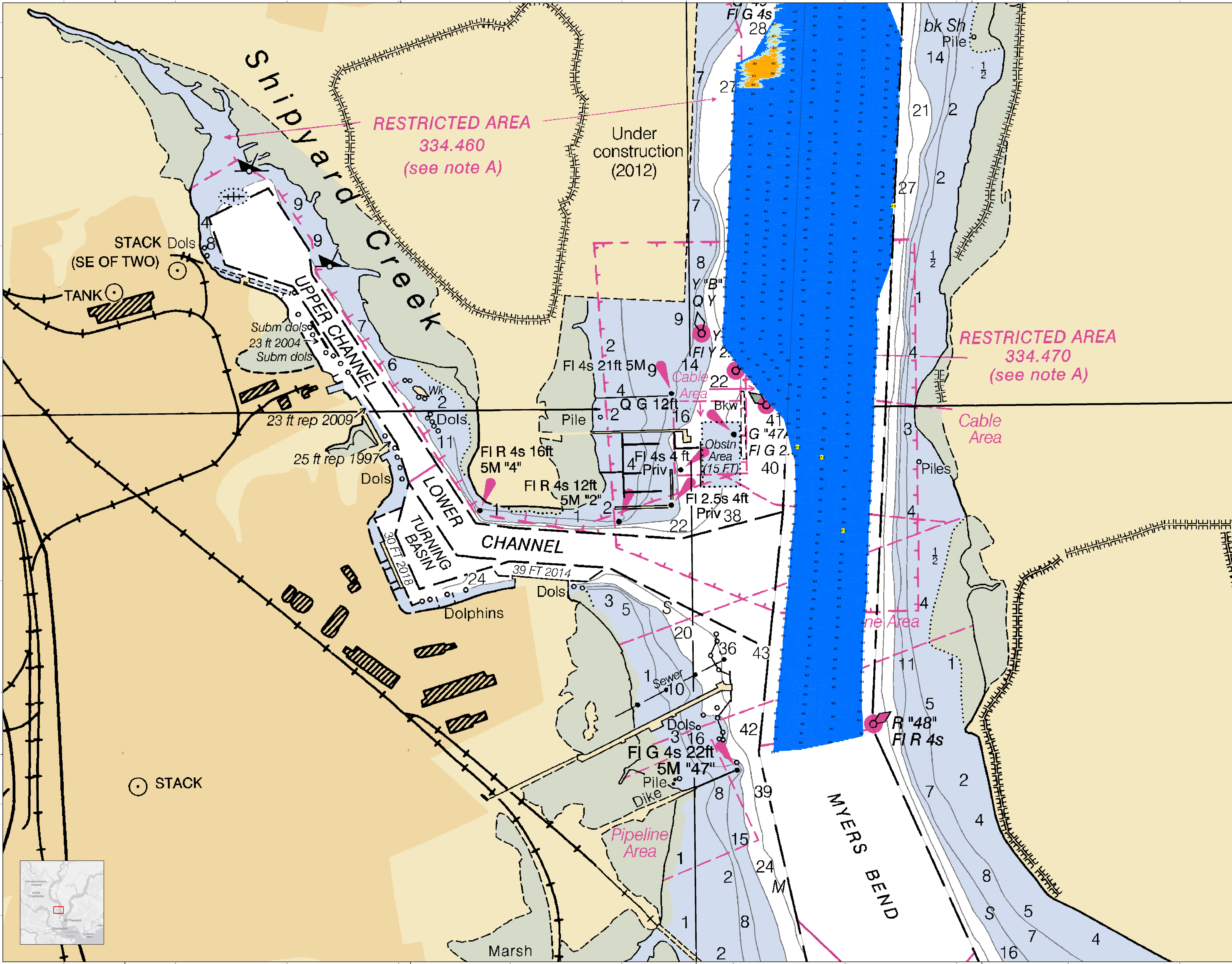
**Production Notes:**  
 1. This is a hydrographic and bathymetric survey.  
 2. The survey was conducted by the Charleston District Office, Special Data Branch.  
 3. The survey was conducted in accordance with the standards of the International Hydrographic Organization (IHO).  
 4. The survey was conducted in accordance with the standards of the U.S. Army Corps of Engineers.  
 5. The survey was conducted in accordance with the standards of the U.S. Army Corps of Engineers.



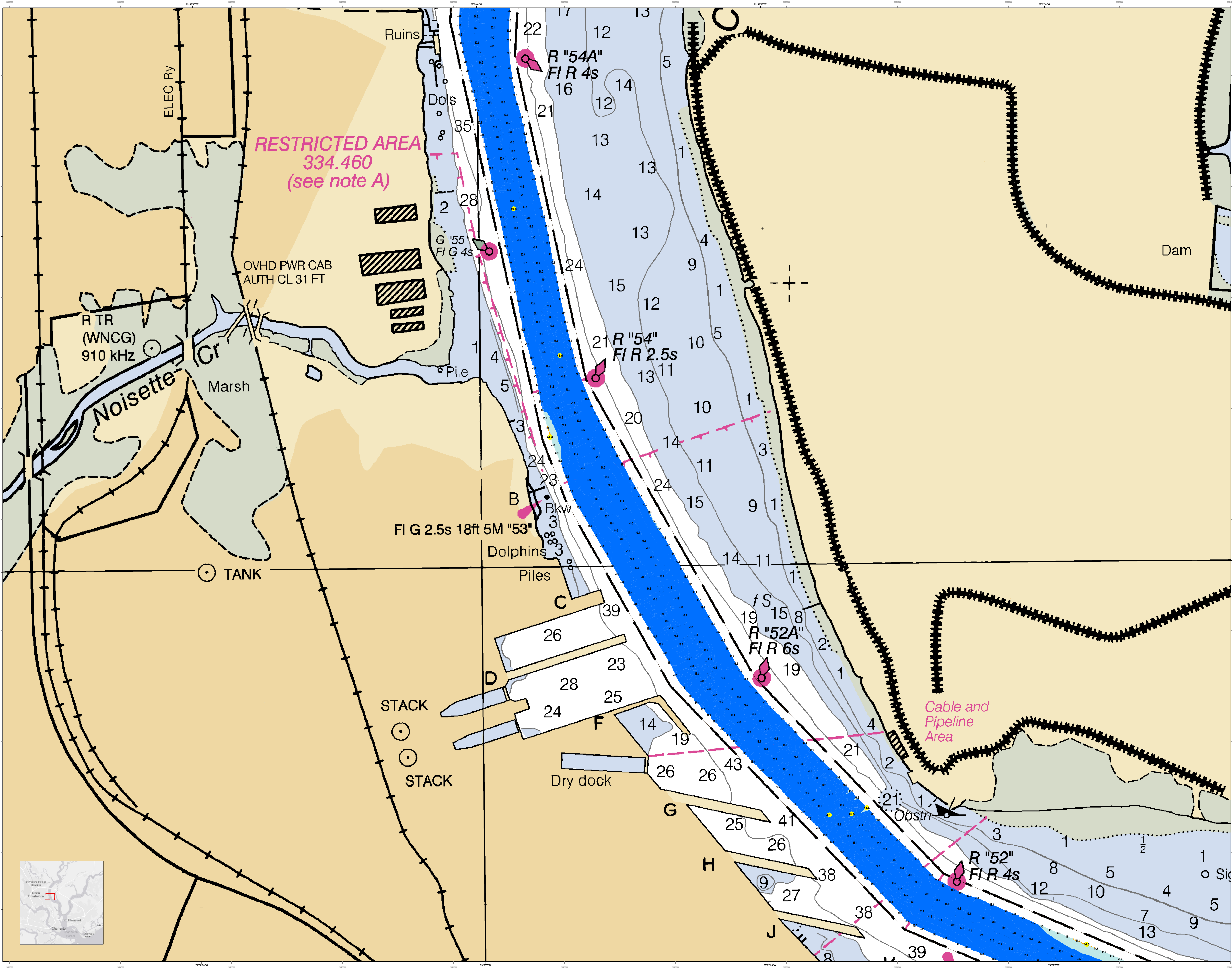
- Legend**
- Soundings**  
 • Depth Soundings  
 • Submerged Obstructions  
 • Grounded Vessels  
 • Obstructions to Navigation  
 • Movable Obstructions  
 • Lighted Buoy  
 • Lighted Beacon  
 • Lighted Daymark  
 • Lighted Tower  
 • Lighted Spar Buoy  
 • Lighted Ball Buoy  
 • Lighted Ball Mark  
 • Lighted Pill Buoy  
 • Lighted Pill Mark  
 • Lighted Can Buoy  
 • Lighted Can Mark  
 • Lighted Flashing Buoy  
 • Lighted Flashing Mark  
 • Lighted Flashing Spar Buoy  
 • Lighted Flashing Ball Buoy  
 • Lighted Flashing Ball Mark  
 • Lighted Flashing Can Buoy  
 • Lighted Flashing Can Mark  
 • Lighted Flashing Spar Buoy Mark  
 • Lighted Flashing Ball Buoy Mark  
 • Lighted Flashing Ball Mark  
 • Lighted Flashing Can Buoy Mark  
 • Lighted Flashing Can Mark
  - Navigation Aids**  
 • Lighted Buoy  
 • Lighted Beacon  
 • Lighted Daymark  
 • Lighted Tower  
 • Lighted Spar Buoy  
 • Lighted Ball Buoy  
 • Lighted Ball Mark  
 • Lighted Pill Buoy  
 • Lighted Pill Mark  
 • Lighted Can Buoy  
 • Lighted Can Mark
  - Other**  
 • Obstruction  
 • Submerged Obstruction  
 • Movable Obstruction  
 • Grounded Vessel  
 • Lighted Buoy  
 • Lighted Beacon  
 • Lighted Daymark  
 • Lighted Tower  
 • Lighted Spar Buoy  
 • Lighted Ball Buoy  
 • Lighted Ball Mark  
 • Lighted Pill Buoy  
 • Lighted Pill Mark  
 • Lighted Can Buoy  
 • Lighted Can Mark

U.S. Army Corps of Engineers Charleston District Office Special Data Branch	Designed By: Jeffery L. Hays	Produced By: John R. Johnson	Survey Date: 10 FEB 2021	Production Date: 12 DEC 2021
Charleston, South Carolina	Reviewed By: John R. Johnson	Project Reference Number: 13C00D	Survey Number: 13C00D	
Charleston, South Carolina	Scale: Horizontal Scale: 1 inch = 250 feet	Scale: Vertical Scale: 1 inch = 250 feet	Scale: Horizontal Scale: 1 inch = 250 feet	Scale: Vertical Scale: 1 inch = 250 feet
Charleston, South Carolina	Projection: NAD 1983 StatePlane South Carolina FIPS 3800 Feet			

**Charleston Upper Harbor Channel Survey**  
 The information depicted on the map represents the results of surveys made on the dates indicated and is subject to change without notice. The information presented is not to be used for navigation or for any other purpose. The information presented is not to be used for navigation or for any other purpose. The information presented is not to be used for navigation or for any other purpose.







**U.S. Army Corps of Engineers**  
Charleston District

**Production Notes:**  
 1. This chart is based on the latest available hydrographic data.  
 2. There are no soundings in the area shown on this chart.  
 3. Soundings are in feet and meters.  
 4. This chart is not to be used for navigation.  
 5. Mariners are encouraged to use all prudent safety measures.

**Legend:**

- Soundings:** 1-10, 11-20, 21-30, 31-40, 41-50, 51-60, 61-70, 71-80, 81-90, 91-100
- Obstructions:** Obstr (Obstruction)
- Navigation Aids:** R (Red Buoy), G (Green Buoy), W (White Buoy), Y (Yellow Buoy), B (Black Buoy), C (Cable Buoy), P (Pile Buoy)
- Structures:** Ruins, Stack, Dry dock, Pile, Dolph
- Other:** Dam, Cable and Pipeline Area, Restricted Area

**Scale:** 1 inch = 250 feet  
0 125 250 500 750 1000 Feet

**Survey Data:**  
 Survey Date: 10 FEB 2021 | 12 DEC 2021  
 Project Reference Number: 13000  
 Survey System: CHARTERED SURVEY  
 Survey Title: CONDITION SURVEY

**Designed By:** jeffrey.v.v. (jeffrey.v.v.)  
**Reviewed By:** T. J. (T. J.)  
**Scale:** 1 inch = 250 feet  
**Projection:** NAD 1983 StatePlane South Carolina FPS 3800 Feet

**U.S. Army Corps of Engineers**  
 CHARLESTON DISTRICT  
 CHARLESTON, SOUTH CAROLINA  
 SANITARY BRANCH  
 804 HADLOCK AVE  
 CHARLESTON, SC 29403  
 CESAC-GIS@USACE.ARMY.MIL

**Charleston Upper Harbor Channel Survey**  
 The information depicted on this map represents the results of surveys made on the dates indicated and call on or over conditions existing at that time.  
 Concluded on: 10 FEB 2021  
 Charleston, South Carolina

**SHEET REFERENCE NUMBER**  
 C002  
 SHEET 3 OF 5

**OVERHEAD CABLE CLEARANCES**

- (A) OVHD PWR CABS  
CL 163 FT REP
- (B) OVHD PWR CABS  
CL 182 FT REP
- (C) OVHD PWR CABS  
CL 166 FT REP
- (D) OVHD PWR CABS  
CL 104 FT REP

OVHD PWR CABS  
(see note C)

TR

TR

TR

TR

TR

TR

TR

TR

TR

TR

TR

TR

TR

TR

TR

TR

TR

TR

TR

TR

TR

TR

TR

TR

TR

TR

TR

TR

TR

TR

**RESTRICTED AREA**  
334.460  
(see note A)

**SECURITY ZONE 165.709**  
(see note A)

FIXED BRIDGE  
HOR CL 700 FT  
VERT CL 155 FT

MAGNETIC  
VAR 7°45' W (2015)  
ANNUAL INCREASE 4'

U.S. Army Corps of Engineers  
Charleston District

Production Date: 12 DEC 2021  
Survey Date: 10 FEB 2021  
Project Reference Number: 2020010  
Survey Station: 2020010  
Survey Type: CONDITION SURVEY

Designed By: J. H. ...  
Reviewed By: J. H. ...  
Scale: 1" = 250' Feet  
Projection: NAD 1983 StatePlane South Carolina FIPS 3800 Feet

U.S. Army Corps of Engineers  
Charleston District  
Charleston, South Carolina  
Savannah Branch  
800 HARGRAVE  
CHARLESTON, SC 29403  
CESAC-GIS@USACE.ARMY.MIL

Charleston Upper Harbor Channel Survey  
The information depicted on this map represents the results of surveys made on the dates indicated and call on the general conditions existing at that time.  
Concluded on: 10 FEB 2021  
Charleston, South Carolina

SHEET REFERENCE NUMBER: C002  
SHEET 4 OF 5



