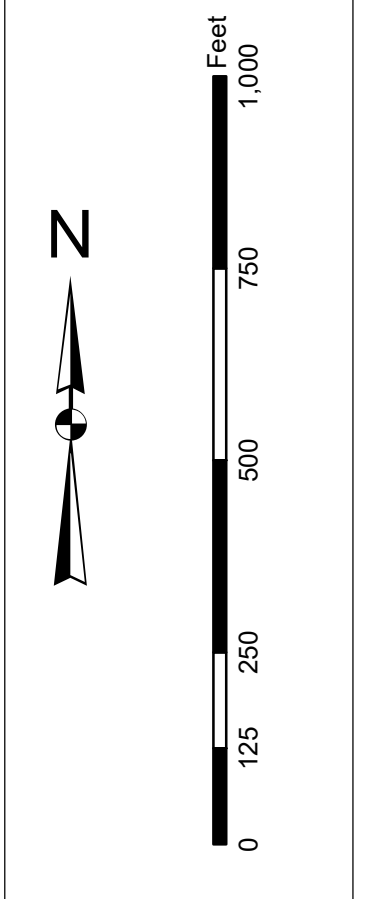


**Production Notes:**  
 1. This is a preliminary chart. It is not to be used for navigation.  
 2. This chart is not to be used for navigation.  
 3. This chart is not to be used for navigation.  
 4. This chart is not to be used for navigation.  
 5. This chart is not to be used for navigation.  
 6. This chart is not to be used for navigation.  
 7. This chart is not to be used for navigation.  
 8. This chart is not to be used for navigation.  
 9. This chart is not to be used for navigation.  
 10. This chart is not to be used for navigation.  
 11. This chart is not to be used for navigation.  
 12. This chart is not to be used for navigation.  
 13. This chart is not to be used for navigation.  
 14. This chart is not to be used for navigation.  
 15. This chart is not to be used for navigation.  
 16. This chart is not to be used for navigation.  
 17. This chart is not to be used for navigation.  
 18. This chart is not to be used for navigation.  
 19. This chart is not to be used for navigation.  
 20. This chart is not to be used for navigation.  
 21. This chart is not to be used for navigation.  
 22. This chart is not to be used for navigation.  
 23. This chart is not to be used for navigation.  
 24. This chart is not to be used for navigation.  
 25. This chart is not to be used for navigation.  
 26. This chart is not to be used for navigation.  
 27. This chart is not to be used for navigation.  
 28. This chart is not to be used for navigation.  
 29. This chart is not to be used for navigation.  
 30. This chart is not to be used for navigation.  
 31. This chart is not to be used for navigation.  
 32. This chart is not to be used for navigation.  
 33. This chart is not to be used for navigation.  
 34. This chart is not to be used for navigation.  
 35. This chart is not to be used for navigation.  
 36. This chart is not to be used for navigation.  
 37. This chart is not to be used for navigation.  
 38. This chart is not to be used for navigation.  
 39. This chart is not to be used for navigation.  
 40. This chart is not to be used for navigation.  
 41. This chart is not to be used for navigation.  
 42. This chart is not to be used for navigation.  
 43. This chart is not to be used for navigation.  
 44. This chart is not to be used for navigation.  
 45. This chart is not to be used for navigation.  
 46. This chart is not to be used for navigation.  
 47. This chart is not to be used for navigation.  
 48. This chart is not to be used for navigation.  
 49. This chart is not to be used for navigation.  
 50. This chart is not to be used for navigation.

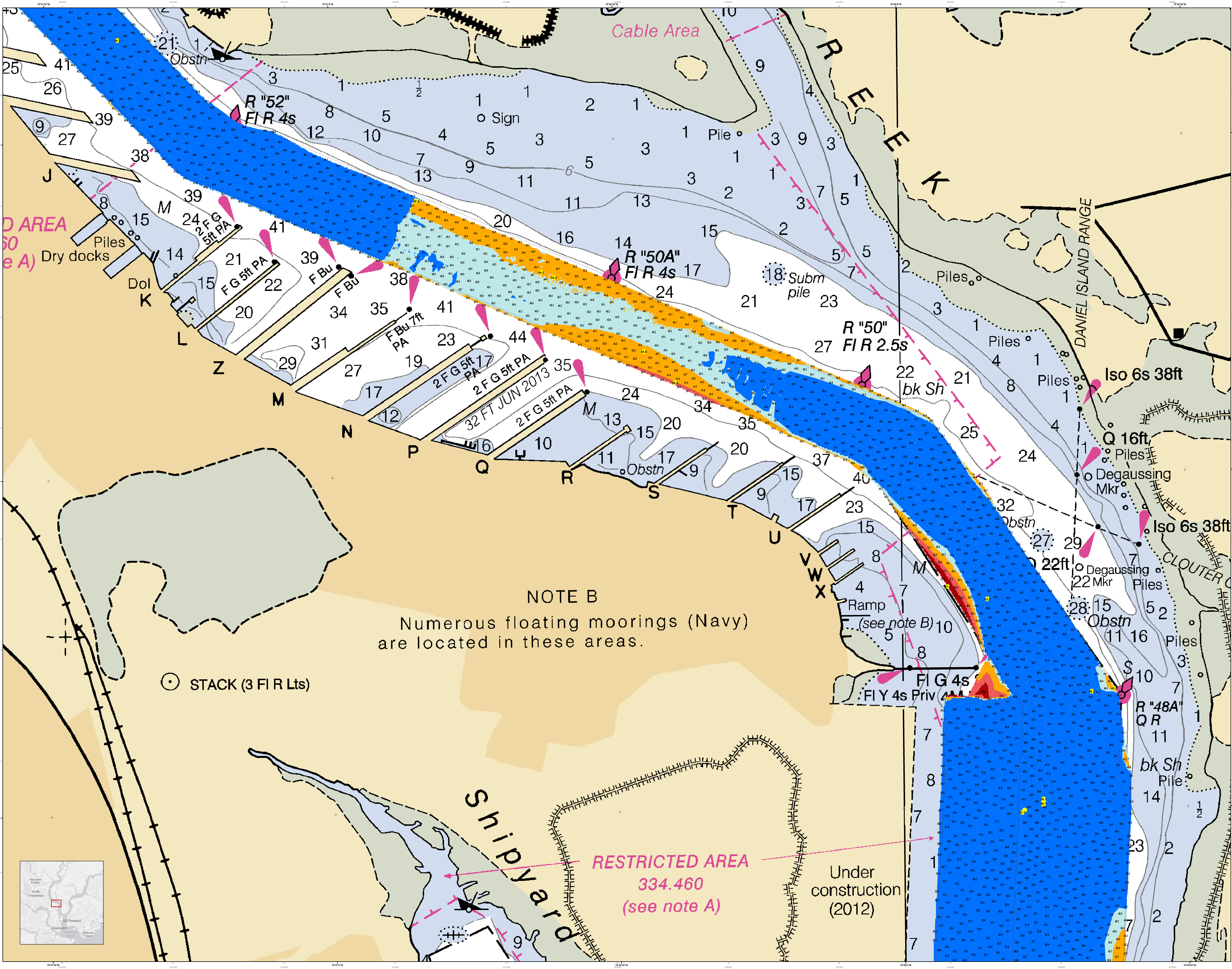


**Legend**

Symbol	Description
[Color swatches]	Water Depth
[Symbol]	Obstruction
[Symbol]	Structure
[Symbol]	Navigation Channel
[Symbol]	Light
[Symbol]	Sound Signal
[Symbol]	Other

Designed By: U.S. Army Corps of Engineers, Charleston District	Survey Date: 24 FEB 2022
Reviewed By: U.S. Army Corps of Engineers, Charleston District	Production Date: 04 MAR 2022
Scale: 1 inch = 250 feet	Project Reference Number: 334.460
Projection: NAD 1983 StatePlane South Carolina FIPS 3800 Feet	Sheet Name: C002

**Charleston Upper Harbor Channel Survey**  
 The information depicted on this map represents the results of surveys made on the dates indicated and is not to be used for navigation under any conditions existing at that time.  
 Concluded on: 24 FEB 2022  
 Charleston, South Carolina

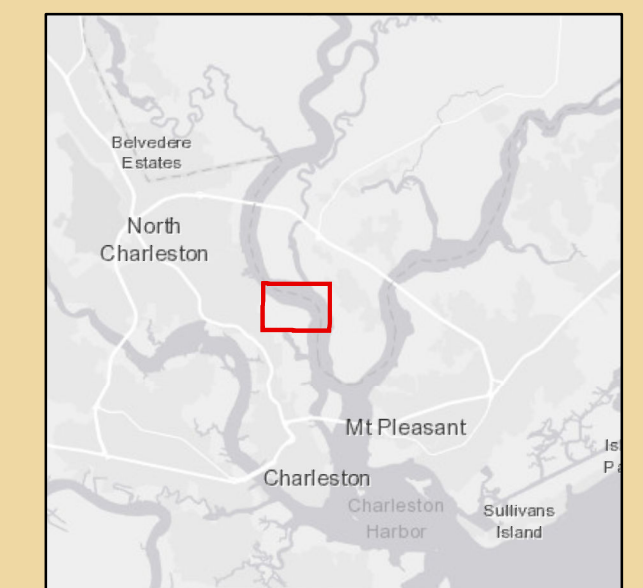


**NOTE B**  
 Numerous floating moorings (Navy) are located in these areas.

⊙ STACK (3 FI R Lts)

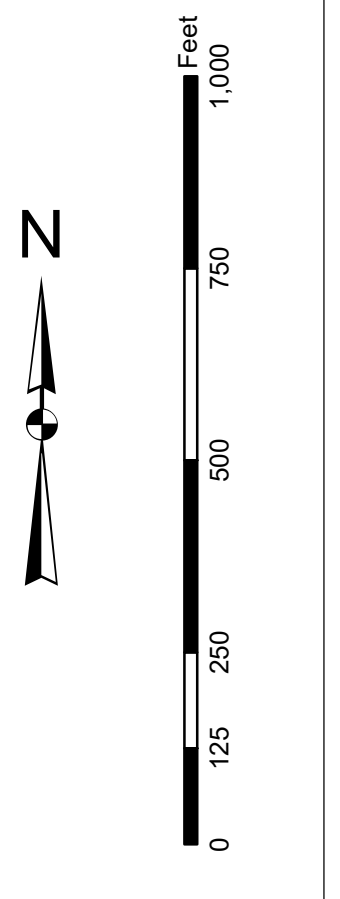
**RESTRICTED AREA**  
 334.460  
 (see note A)

Under construction (2012)



In this project, the U.S. Army Corps of Engineers, Charleston District Office, has prepared a hydrographic survey of the Noisetto Harbor Channel. This survey was conducted to determine the depth of the channel and to identify any obstructions. The survey data was used to update the hydrographic chart and to create this chart. The chart is intended for use by mariners and other users of the channel. The chart is not to be used for any other purpose. The chart is the property of the U.S. Army Corps of Engineers, Charleston District Office. It is to be used only for the purpose for which it was prepared. It is not to be reproduced, stored in a retrieval system, or transmitted in any form or by any means, electronic, mechanical, photocopying, recording, or by any information storage and retrieval system, without the prior written permission of the U.S. Army Corps of Engineers, Charleston District Office.

Production Notes:  
1. This chart is a hydrographic chart.  
2. The chart is based on the most recent survey data available.  
3. The chart is intended for use by mariners and other users of the channel.  
4. The chart is not to be used for any other purpose.  
5. The chart is the property of the U.S. Army Corps of Engineers, Charleston District Office.  
6. It is to be used only for the purpose for which it was prepared.  
7. It is not to be reproduced, stored in a retrieval system, or transmitted in any form or by any means, electronic, mechanical, photocopying, recording, or by any information storage and retrieval system, without the prior written permission of the U.S. Army Corps of Engineers, Charleston District Office.



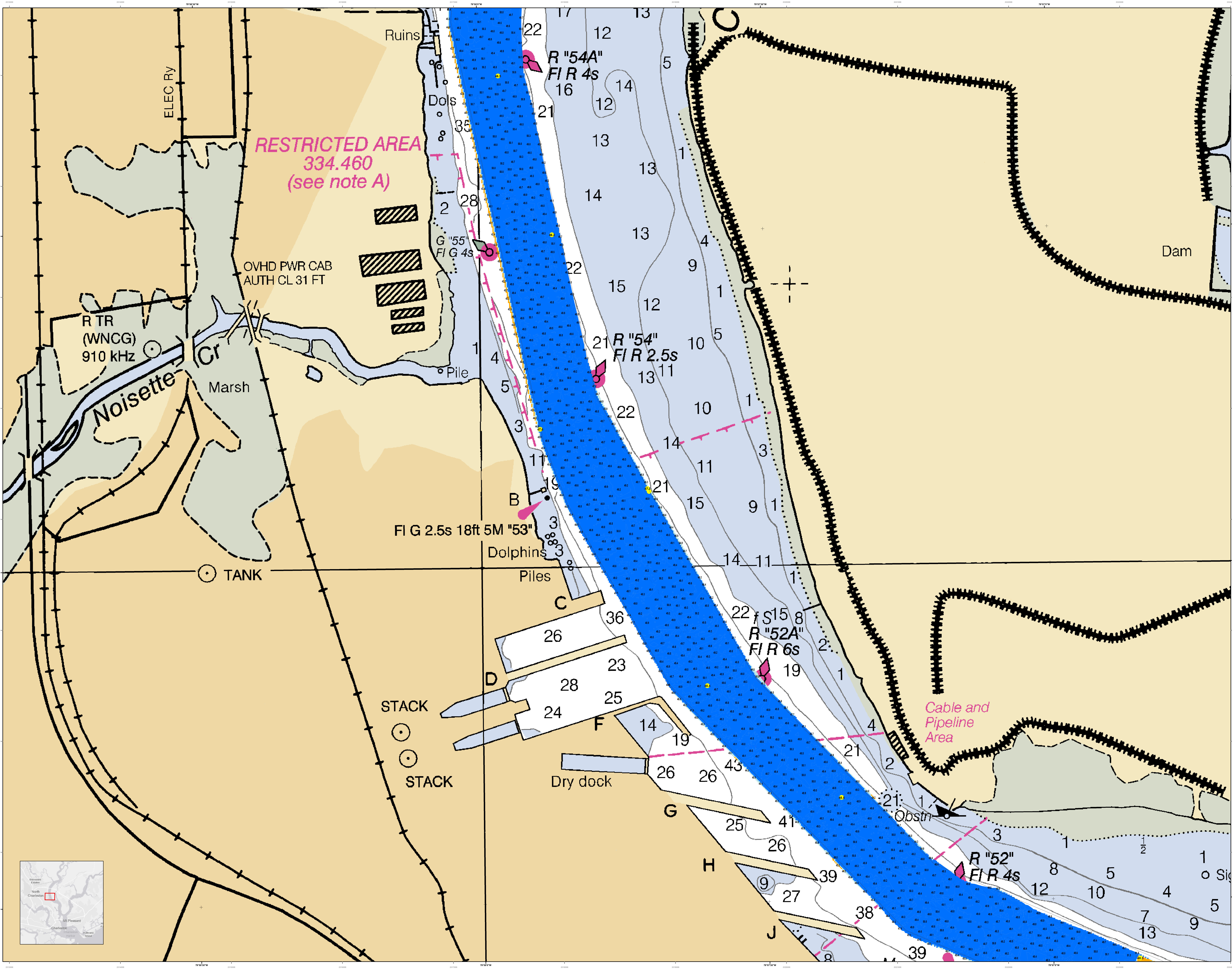
**Legend**

Symbol/Color	Description
Blue hatched area	Restricted Area
Red hatched area	Obstruction
Black hatched area	Obstruction
White hatched area	Obstruction
Yellow hatched area	Obstruction
Green hatched area	Obstruction
Pink triangle	R "54A" F/R 4s
Pink circle	G "55" F/G 4s
Pink square	R "54" F/R 2.5s
Pink diamond	R "52A" F/R 6s
Pink hexagon	R "52" F/R 4s
Black circle	Obstruction
Black square	Obstruction
Black triangle	Obstruction
Black diamond	Obstruction
Black hexagon	Obstruction
Black circle with cross	Obstruction
Black square with cross	Obstruction
Black triangle with cross	Obstruction
Black diamond with cross	Obstruction
Black hexagon with cross	Obstruction
Black circle with dot	Obstruction
Black square with dot	Obstruction
Black triangle with dot	Obstruction
Black diamond with dot	Obstruction
Black hexagon with dot	Obstruction

Designed By:	Survey Date:	Production Date:
Reviewed By:	24 FEB 2022	04 MAR 2022
Revised By:	Project Reference Number:	
	1.0000	
	Scale:	CONDITION
	1 inch = 250 feet	
	Projection:	
	NAD 1983 StatePlane South Carolina FIPS 3900 Feet	

**Charleston Upper Harbor Channel Survey**  
The information depicted on this map represents the results of surveys made on the dates indicated and is not to be used for any other purpose. It is the property of the U.S. Army Corps of Engineers, Charleston District Office. It is to be used only for the purpose for which it was prepared. It is not to be reproduced, stored in a retrieval system, or transmitted in any form or by any means, electronic, mechanical, photocopying, recording, or by any information storage and retrieval system, without the prior written permission of the U.S. Army Corps of Engineers, Charleston District Office.

Concluded on: **24 FEB 2022**  
Charleston, South Carolina



**RESTRICTED AREA**  
334.460  
(see note A)

OVHD PWR CAB  
AUTH CL 31 FT

R TR  
(WNCG)  
910 KHz

Marsh

TANK

FIG 2.5s 18ft 5M "53"

STACK

STACK

Dry dock

Cable and  
Pipeline  
Area

Obstr

R "52"  
F/R 4s



**OVERHEAD CABLE CLEARANCES**

- (A) OVHD PWR CABS  
CL 163 FT REP
- (B) OVHD PWR CABS  
CL 182 FT REP
- (C) OVHD PWR CABS  
CL 166 FT REP
- (D) OVHD PWR CABS  
CL 104 FT REP

OVHD PWR CABS  
(see note C)

SECURITY ZONE 165.709  
(see note A)

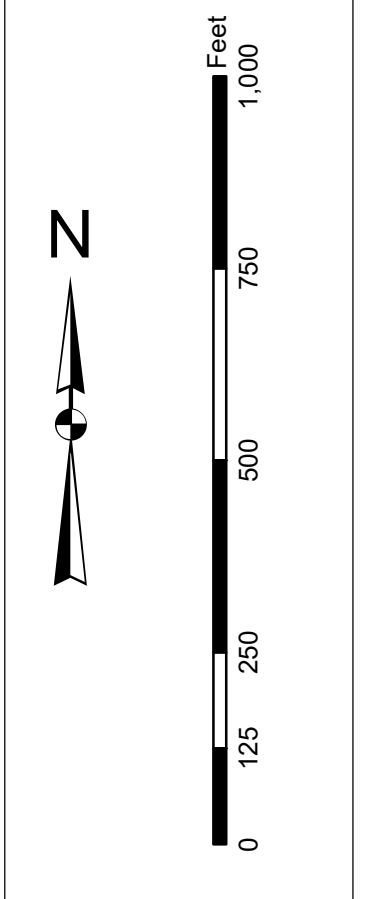
RESTRICTED AREA  
334.460  
(see note A)

FIXED BRIDGE  
HOR CL 700 FT  
VERT CL 155 FT

MAGNETIC  
VAR 7° 45' W (2015)  
ANNUAL INCREASE 4'

In accordance with the U.S. Army Corps of Engineers, Charleston District Office, Navigation Rules for Inland Waterways, Section 2, Rule 20, a vessel navigating in the waters shown on this chart is advised that the information on this chart is based on the latest available information and is not intended to be used for navigation. Mariners are encouraged to use all prudent safety practices.

Production Notes:  
1. This chart is a preliminary chart and is subject to change without notice.  
2. There are no soundings shown in the area of this chart.  
3. Soundings are in feet and meters.  
4. The datum for this chart is Mean Lower Low Water (MLLW).  
5. The datum for the magnetic variation is Magnetic North (MAGNETIC).  
6. The datum for the fixed bridge is Mean Lower Low Water (MLLW).  
7. The datum for the overhead power cables is Mean Lower Low Water (MLLW).  
8. The datum for the restricted area is Mean Lower Low Water (MLLW).  
9. The datum for the security zone is Mean Lower Low Water (MLLW).  
10. The datum for the tanks is Mean Lower Low Water (MLLW).  
11. The datum for the ruins is Mean Lower Low Water (MLLW).  
12. The datum for the dolphins is Mean Lower Low Water (MLLW).  
13. The datum for the foul is Mean Lower Low Water (MLLW).  
14. The datum for the dols is Mean Lower Low Water (MLLW).  
15. The datum for the dols is Mean Lower Low Water (MLLW).  
16. The datum for the dols is Mean Lower Low Water (MLLW).  
17. The datum for the dols is Mean Lower Low Water (MLLW).  
18. The datum for the dols is Mean Lower Low Water (MLLW).  
19. The datum for the dols is Mean Lower Low Water (MLLW).  
20. The datum for the dols is Mean Lower Low Water (MLLW).



Legend

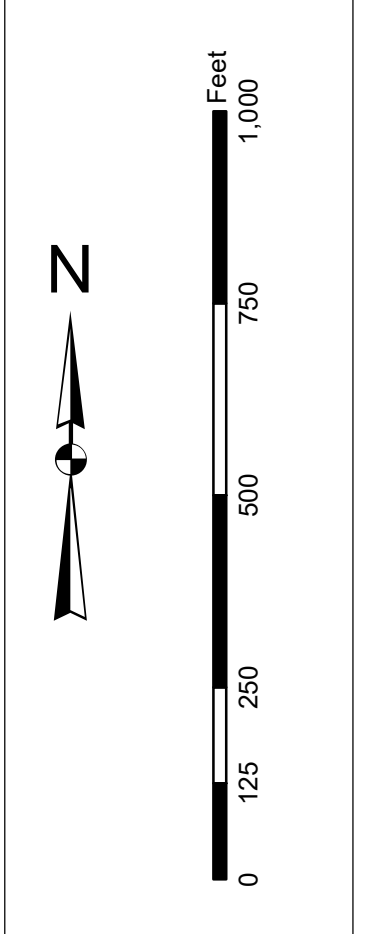
Symbol	Description
(A)	Overhead Power Cable
(B)	Overhead Power Cable
(C)	Overhead Power Cable
(D)	Overhead Power Cable
(R "58")	Range 58 feet
(R "56A")	Range 56 feet
(R "56")	Range 56 feet
(R "54A")	Range 54 feet
(TANK)	Tank
(RUINS)	Ruins
(DOLPHINS)	Dolphins
(FOUL)	Foul
(DOLS)	Dols
(TR)	Traverse
(M)	Magnetic
(G)	Ground
(C)	Channel
(A)	Area
(B)	Bank
(C)	Channel
(D)	Dike
(E)	Embankment
(F)	Fence
(G)	Ground
(H)	Height
(I)	Island
(J)	Jetty
(K)	Keel
(L)	Light
(M)	Magnetic
(N)	North
(O)	Obstruction
(P)	Pier
(Q)	Quarry
(R)	Range
(S)	Shoal
(T)	Tank
(U)	Uncharted
(V)	Vessel
(W)	Water
(X)	Unknown
(Y)	Yacht
(Z)	Zone

Designed By:	Survey Date:	Production Date:
Reviewed By:	24 FEB 2022	04 MAR 2022
Checked By:	15,000	1:2500
Scale:	1 inch = 250 feet	CONDITION
Projection:	NAD 1983 StatePlane South Carolina FIPS 3800 Feet	

U.S. Army Corps of Engineers  
Charleston District  
Charleston, South Carolina  
815 HADGOD AVE  
CHARLESTON, SC 29403  
843-328-8000



**Production Notes:**  
 1. This map is a preliminary survey map and is not intended to be used for navigation.  
 2. These data were derived from a bathymetric survey conducted in 2011-2012.  
 3. Changes in water levels and other hydrographic data may occur and should be considered when using this map.  
 4. Users are encouraged to use all prudent safety practices.



**Legend**

**Depth in Feet**  
 0-10 (Blue)  
 11-20 (Light Blue)  
 21-30 (Medium Blue)  
 31-40 (Dark Blue)  
 41-50 (Very Dark Blue)  
 51-60 (Black)

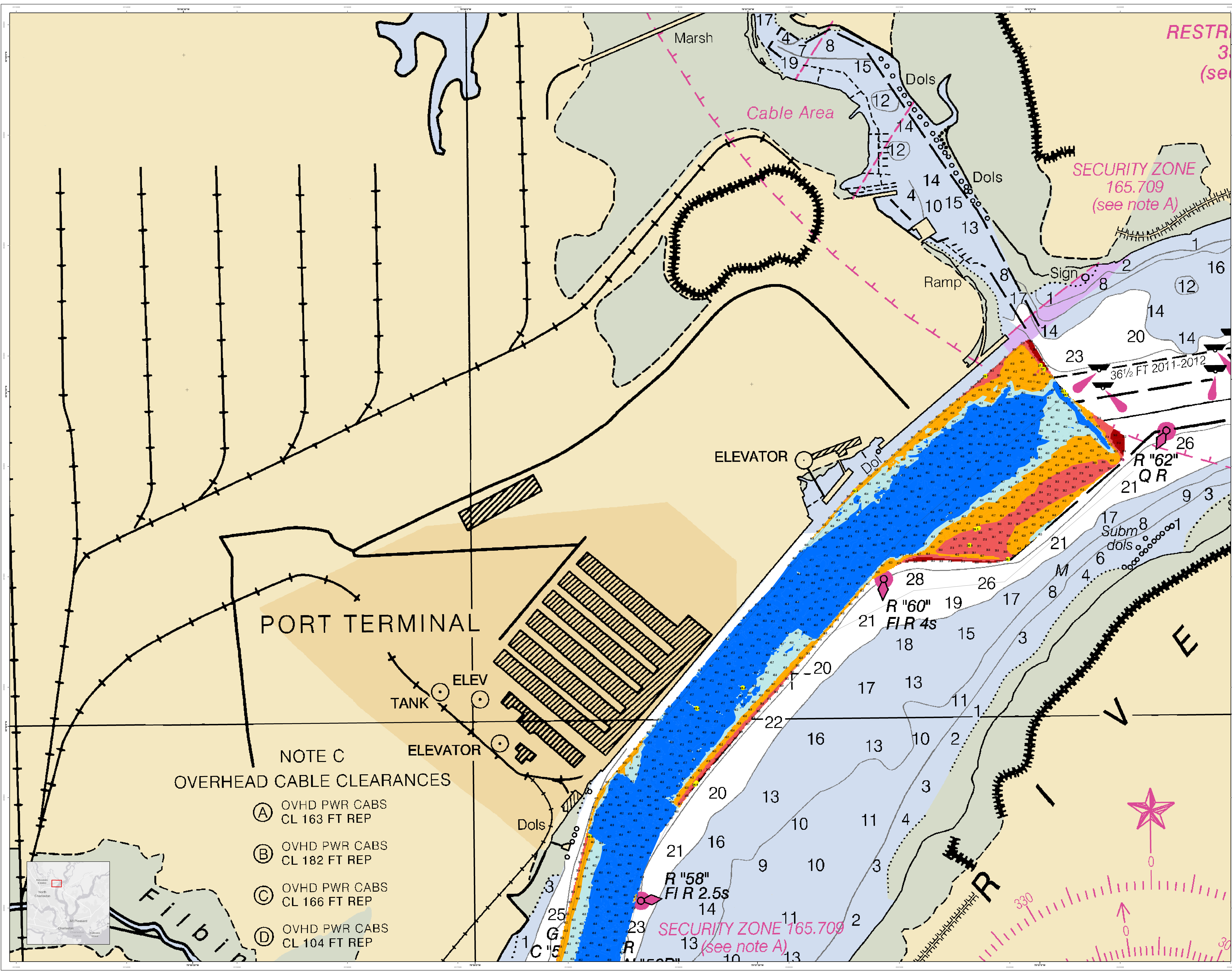
**USCG Buoy**  
 Red Buoy  
 Green Buoy  
 White Buoy  
 Yellow Buoy  
 Black Buoy  
 Composite Buoy

**USCG Light**  
 Red Light  
 Green Light  
 White Light  
 Yellow Light  
 Black Light  
 Composite Light

**Other Symbols**  
 Cable Area  
 Security Zone  
 Marsh  
 Ramp  
 Dols  
 Sign  
 Elevator  
 Tank  
 Port Terminal

Designed By:	Survey Date:	Production Date:
Reviewed By:	24 FEB 2022	04 MAR 2022
Project Reference Number:	Project Reference Number:	Project Reference Number:
13.000	13.000	13.000
Scale:	Scale:	Scale:
1 inch = 250 feet	1 inch = 250 feet	1 inch = 250 feet
Projection:	Projection:	Projection:
NAD 1983 StatePlane South Carolina FIPS 3800 Feet	NAD 1983 StatePlane South Carolina FIPS 3800 Feet	NAD 1983 StatePlane South Carolina FIPS 3800 Feet

**Charleston Upper Harbor Channel Survey**  
 The information depicted on this map represents the results of surveys made on the dates indicated and is not intended to be used for navigation. Users are encouraged to use all prudent safety practices.  
 Concluded on: 24 FEB 2022  
 Charleston, South Carolina



**NOTE C**  
**OVERHEAD CABLE CLEARANCES**

- Ⓐ OVHD PWR CABS  
CL 163 FT REP
- Ⓑ OVHD PWR CABS  
CL 182 FT REP
- Ⓒ OVHD PWR CABS  
CL 166 FT REP
- Ⓓ OVHD PWR CABS  
CL 104 FT REP

