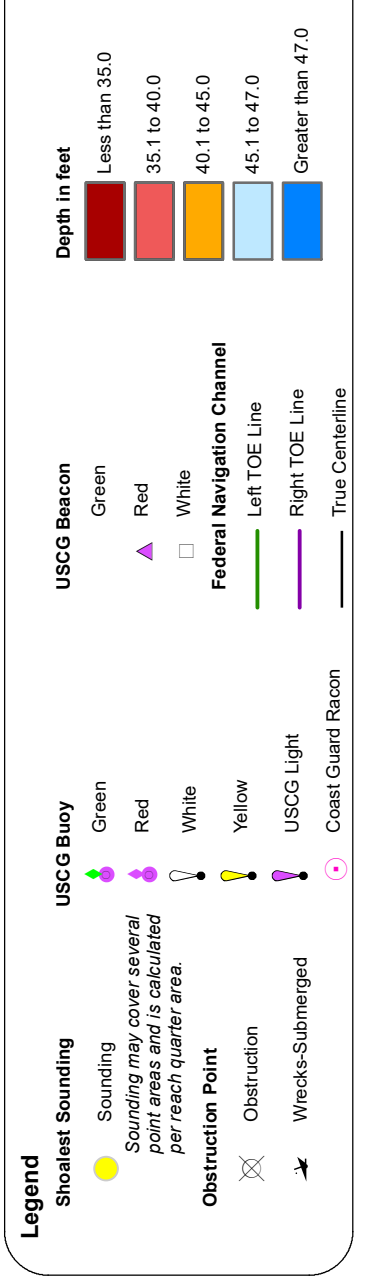
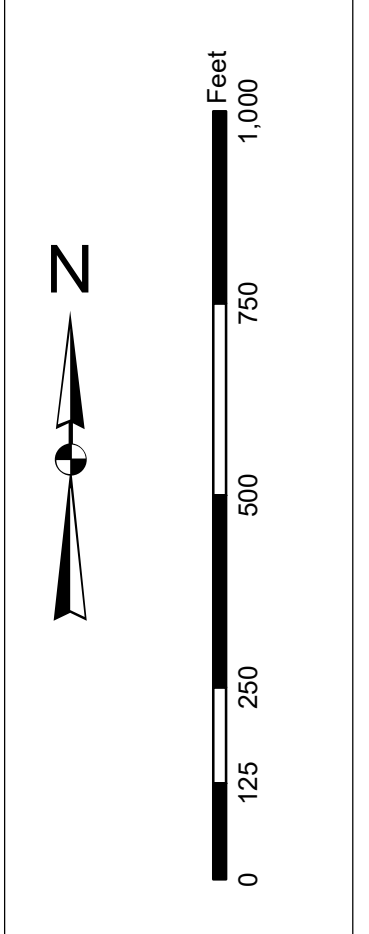


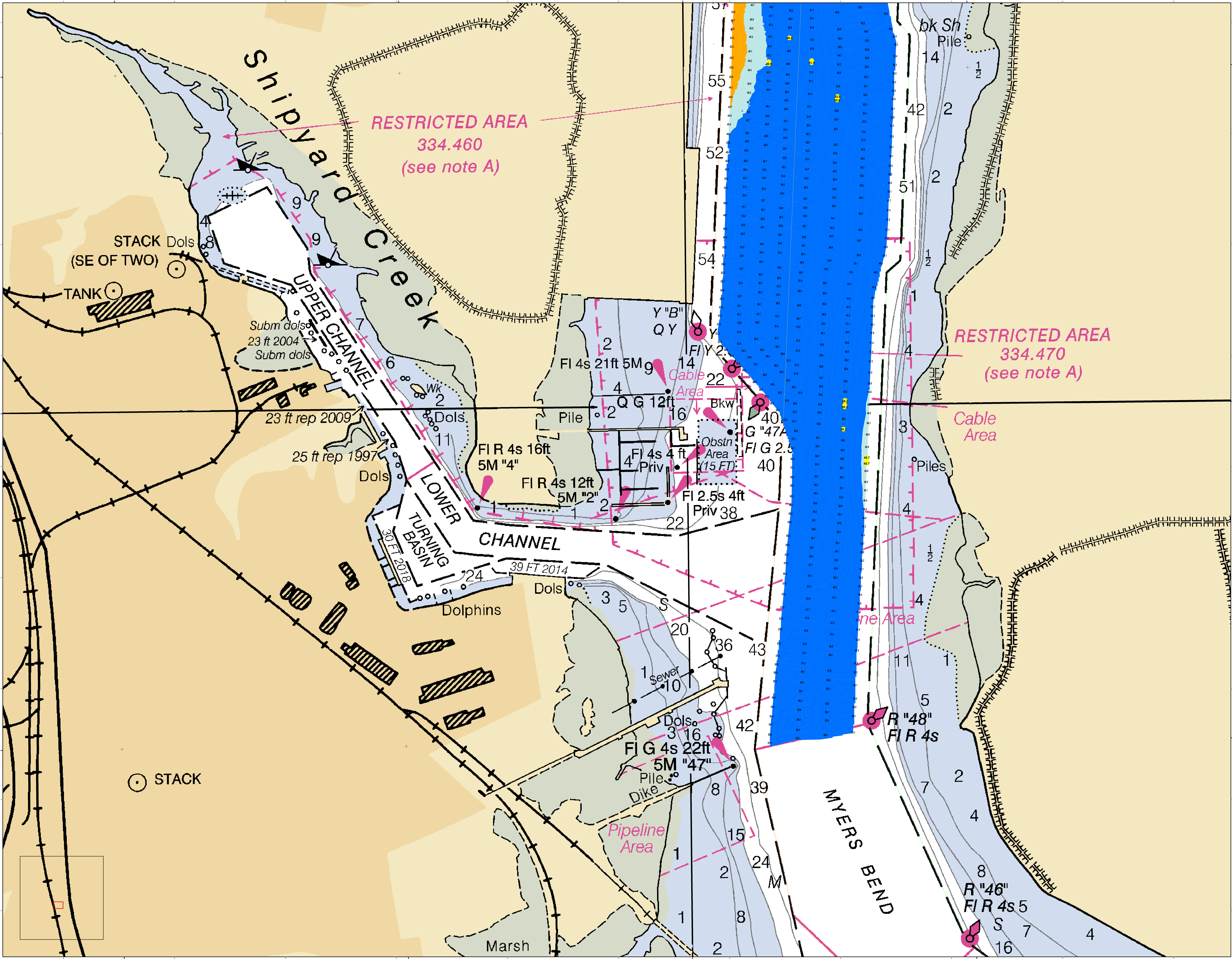
In its use, the U.S. Army Corps of Engineers, Charleston District Office, Special Data Branch, is liable for the accuracy of the information shown on this map. The user assumes all responsibility for the use of this information. This information is provided for informational purposes only and is not intended to be used for any other purpose. The user assumes all responsibility for the use of this information. This information is provided for informational purposes only and is not intended to be used for any other purpose. The user assumes all responsibility for the use of this information.

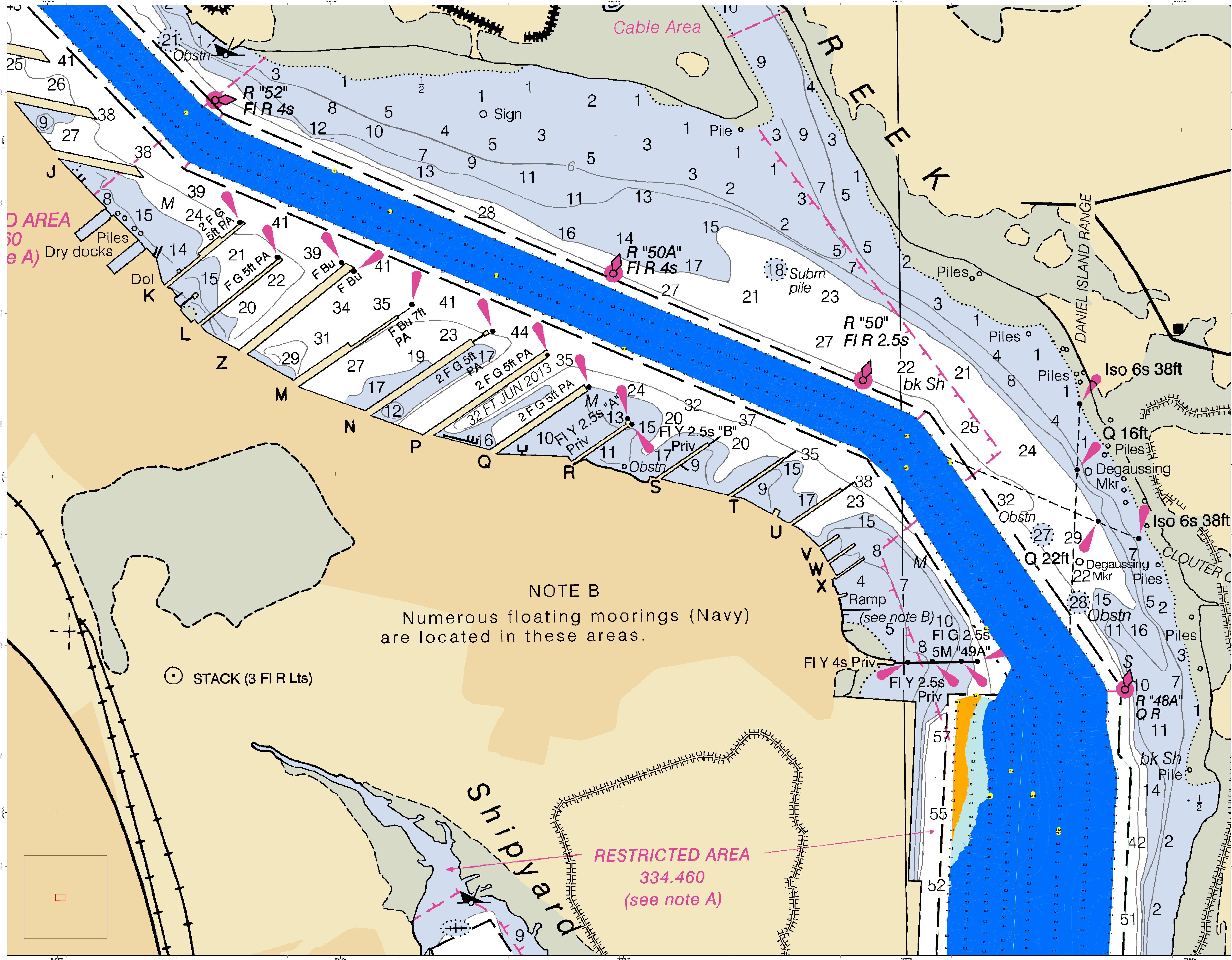


| | | |
|---|---|---|
| Designed By: | Survey Date: | Production Date: |
| Reviewed By: | 16 NOV 2022 | 18 NOV 2022 |
| Scale: | Scale: | Scale: |
| 1:50,000 | 1:50,000 | 1:50,000 |
| Projection: | Projection: | Projection: |
| NAD 1983 StatePlane South Carolina FIPS 3900 Feet | NAD 1983 StatePlane South Carolina FIPS 3900 Feet | NAD 1983 StatePlane South Carolina FIPS 3900 Feet |

Charleston Upper Harbor Channel Survey
The information depicted on this map represents the results of surveys made on the dates indicated and can only be used for the purposes for which the survey was conducted. The user assumes all responsibility for the use of this information. This information is provided for informational purposes only and is not intended to be used for any other purpose. The user assumes all responsibility for the use of this information.

Concluded on: 16 NOV 2022
Charleston, South Carolina





D AREA
60
e A)

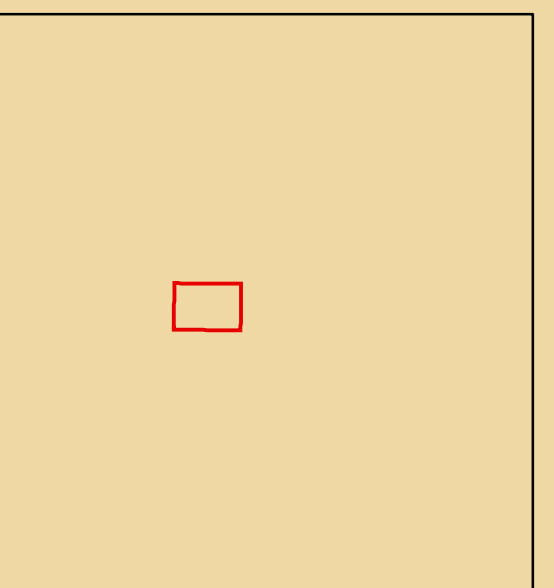
Dry docks
Piles

Cable Area

○ STACK (3 FIR LtS)

NOTE B
Numerous floating moorings (Navy)
are located in these areas.

RESTRICTED AREA
334.460
(see note A)



U.S. Army Corps of Engineers
Charleston District

It is the policy of the U.S. Army Corps of Engineers, Charleston District Office, to make this information available to the public in electronic form. This information is provided in electronic form for informational purposes only. It is not intended to be used for navigation or other purposes. The user assumes all responsibility for the use of this information. The information is provided in electronic form for informational purposes only. It is not intended to be used for navigation or other purposes. The user assumes all responsibility for the use of this information.

Production Notes:

- This is a preliminary chart.
- There is no responsibility for errors or omissions in this chart.
- There is no responsibility for errors or omissions in this chart.
- There is no responsibility for errors or omissions in this chart.

N

0 125 250 500 750 1000 Feet

Chart No.: 13344

Scale: 1" = 250 Feet

Chart No.: 13344

Scale: 1" = 250 Feet

Designed By: U.S. Army Corps of Engineers, Charleston District Office, 16 NOV 2022

Reviewed By: U.S. Army Corps of Engineers, Charleston District Office, 16 NOV 2022

Revised By: U.S. Army Corps of Engineers, Charleston District Office, 16 NOV 2022

Projection: UTM 18Q UTM Zone 18Q, Datum: WGS 84, Spheroid: GRS 80, Semi-Major Axis: 6378137.0, Flattening: 1/298.257222101, Units: Meter

U.S. Army Corps of Engineers, Charleston District Office, 16 NOV 2022

Project Reference Number: 13344

Chart No.: 13344

Scale: 1" = 250 Feet

Projection: UTM 18Q UTM Zone 18Q, Datum: WGS 84, Spheroid: GRS 80, Semi-Major Axis: 6378137.0, Flattening: 1/298.257222101, Units: Meter

U.S. Army Corps of Engineers, Charleston District Office, 16 NOV 2022

Project Reference Number: 13344

Chart No.: 13344

Scale: 1" = 250 Feet

Projection: UTM 18Q UTM Zone 18Q, Datum: WGS 84, Spheroid: GRS 80, Semi-Major Axis: 6378137.0, Flattening: 1/298.257222101, Units: Meter

U.S. Army Corps of Engineers, Charleston District Office, 16 NOV 2022

Project Reference Number: 13344

Chart No.: 13344

Scale: 1" = 250 Feet

Projection: UTM 18Q UTM Zone 18Q, Datum: WGS 84, Spheroid: GRS 80, Semi-Major Axis: 6378137.0, Flattening: 1/298.257222101, Units: Meter

U.S. Army Corps of Engineers, Charleston District Office, 16 NOV 2022

Project Reference Number: 13344

Chart No.: 13344

Scale: 1" = 250 Feet

Projection: UTM 18Q UTM Zone 18Q, Datum: WGS 84, Spheroid: GRS 80, Semi-Major Axis: 6378137.0, Flattening: 1/298.257222101, Units: Meter

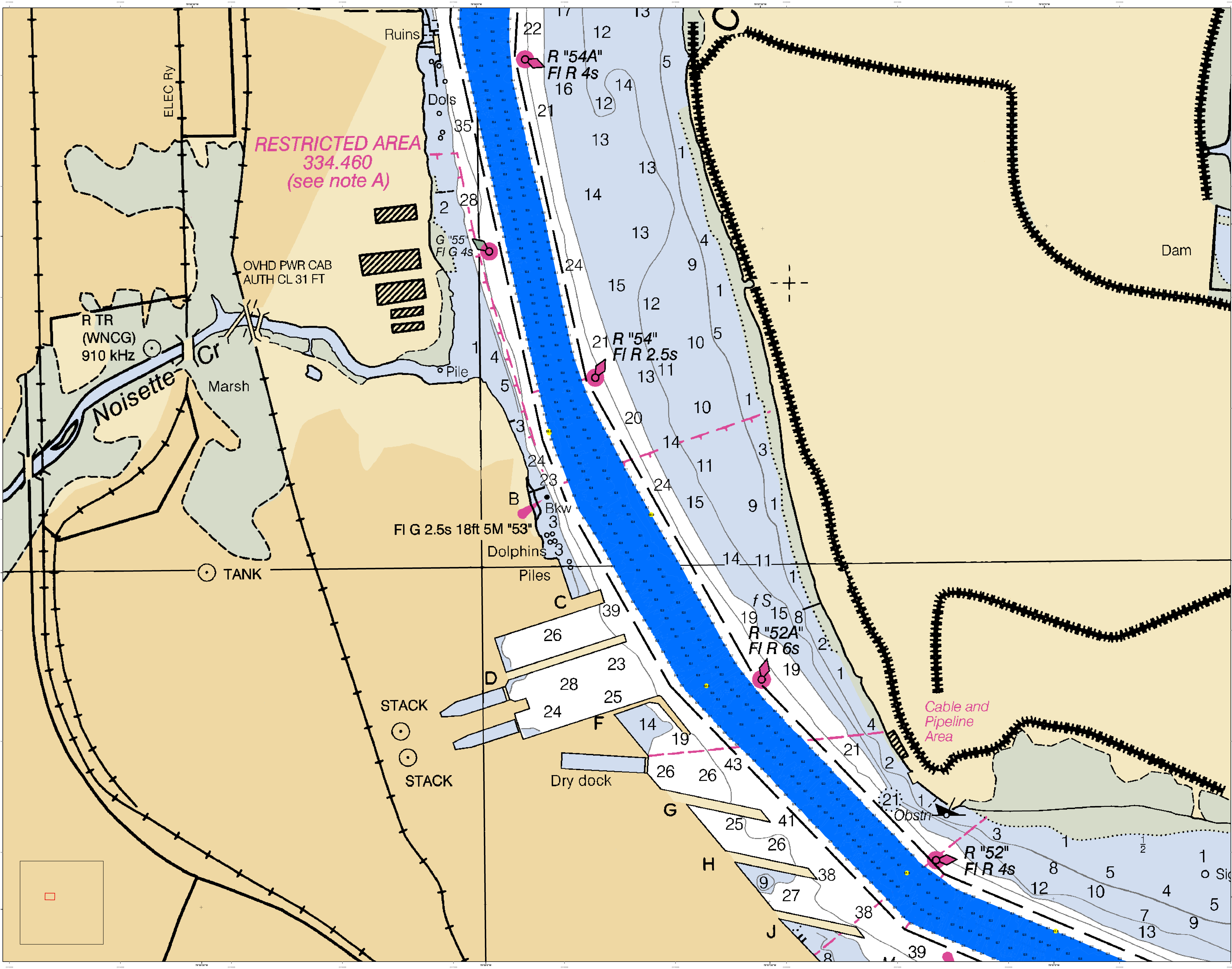
U.S. Army Corps of Engineers, Charleston District Office, 16 NOV 2022

Project Reference Number: 13344

Chart No.: 13344

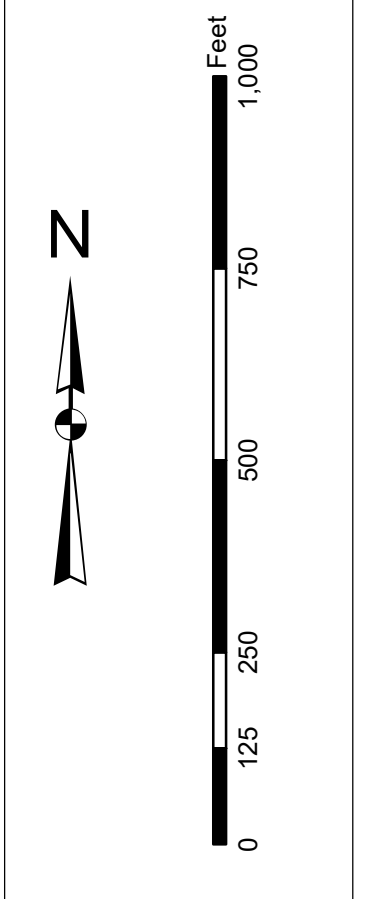
Scale: 1" = 250 Feet

Projection: UTM 18Q UTM Zone 18Q, Datum: WGS 84, Spheroid: GRS 80, Semi-Major Axis: 6378137.0, Flattening: 1/298.257222101, Units: Meter



In the event the U.S. Army Corps of Engineers, Charleston District Office, Special Data Branch is unable to provide, update, or correct the information on this chart, the user is advised to contact the nearest Hydrographic Office for the most current information. This information is provided for general information only and is not intended to be used for navigation. The user is advised to use this information in conjunction with other available information and to exercise caution when using this information. The user is advised to use this information in conjunction with other available information and to exercise caution when using this information. The user is advised to use this information in conjunction with other available information and to exercise caution when using this information.

Production Notes:
1. This chart is a preliminary chart.
2. This chart is not intended to be used for navigation.
3. Soundings are in feet and meters.
4. All depths are to the lowest low water.
5. All depths are to the lowest low water.
6. All depths are to the lowest low water.
7. All depths are to the lowest low water.
8. All depths are to the lowest low water.
9. All depths are to the lowest low water.
10. All depths are to the lowest low water.



Legend

Soundings: 1. 1-10, 2. 11-20, 3. 21-30, 4. 31-40, 5. 41-50, 6. 51-60, 7. 61-70, 8. 71-80, 9. 81-90, 10. 91-100, 11. 101-110, 12. 111-120, 13. 121-130, 14. 131-140, 15. 141-150, 16. 151-160, 17. 161-170, 18. 171-180, 19. 181-190, 20. 191-200, 21. 201-210, 22. 211-220, 23. 221-230, 24. 231-240, 25. 241-250, 26. 251-260, 27. 261-270, 28. 271-280, 29. 281-290, 30. 291-300, 31. 301-310, 32. 311-320, 33. 321-330, 34. 331-340, 35. 341-350, 36. 351-360, 37. 361-370, 38. 371-380, 39. 381-390, 40. 391-400, 41. 401-410, 42. 411-420, 43. 421-430, 44. 431-440, 45. 441-450, 46. 451-460, 47. 461-470, 48. 471-480, 49. 481-490, 50. 491-500.

Obstructions: 1. Obstruction, 2. Obstruction, 3. Obstruction, 4. Obstruction, 5. Obstruction, 6. Obstruction, 7. Obstruction, 8. Obstruction, 9. Obstruction, 10. Obstruction, 11. Obstruction, 12. Obstruction, 13. Obstruction, 14. Obstruction, 15. Obstruction, 16. Obstruction, 17. Obstruction, 18. Obstruction, 19. Obstruction, 20. Obstruction, 21. Obstruction, 22. Obstruction, 23. Obstruction, 24. Obstruction, 25. Obstruction, 26. Obstruction, 27. Obstruction, 28. Obstruction, 29. Obstruction, 30. Obstruction, 31. Obstruction, 32. Obstruction, 33. Obstruction, 34. Obstruction, 35. Obstruction, 36. Obstruction, 37. Obstruction, 38. Obstruction, 39. Obstruction, 40. Obstruction, 41. Obstruction, 42. Obstruction, 43. Obstruction, 44. Obstruction, 45. Obstruction, 46. Obstruction, 47. Obstruction, 48. Obstruction, 49. Obstruction, 50. Obstruction.

Other Symbols: 1. Light, 2. Light, 3. Light, 4. Light, 5. Light, 6. Light, 7. Light, 8. Light, 9. Light, 10. Light, 11. Light, 12. Light, 13. Light, 14. Light, 15. Light, 16. Light, 17. Light, 18. Light, 19. Light, 20. Light, 21. Light, 22. Light, 23. Light, 24. Light, 25. Light, 26. Light, 27. Light, 28. Light, 29. Light, 30. Light, 31. Light, 32. Light, 33. Light, 34. Light, 35. Light, 36. Light, 37. Light, 38. Light, 39. Light, 40. Light, 41. Light, 42. Light, 43. Light, 44. Light, 45. Light, 46. Light, 47. Light, 48. Light, 49. Light, 50. Light.

| | | |
|---|---|---------------------------|
| Designed By: | Survey Date: | Production Date: |
| Hydrographic Survey v3.82 | 16 NOV 2022 | 16 NOV 2022 |
| Reviewed By: | Absolute Scale: | Project Reference Number: |
| 1:50,000 | 1:50,000 | CCW-PC-00010 |
| Revised Scale: | Relative Scale: | Survey Type: |
| 1 inch = 250 feet | CCW | CCW |
| Projection: | MAD 1893 StatePlane South Carolina FIPS 3900 Feet | |
| U.S. Army Corps of Engineers Charleston District Charleston, South Carolina | CESAC-GIS@USACE.ARMY.MIL | |

Charleston Upper Harbor Channel Survey
The information depicted on this chart represents the results of surveys made on the dates indicated and is not intended to be used for navigation. The user is advised to use this information in conjunction with other available information and to exercise caution when using this information. The user is advised to use this information in conjunction with other available information and to exercise caution when using this information. The user is advised to use this information in conjunction with other available information and to exercise caution when using this information.

Concluded on: 16 NOV 2022
Charleston, South Carolina

OVERHEAD CABLE CLEARANCES

- (A) OVHD PWR CABS
CL 163 FT REP
- (B) OVHD PWR CABS
CL 182 FT REP
- (C) OVHD PWR CABS
CL 166 FT REP
- (D) OVHD PWR CABS
CL 104 FT REP

OVHD PWR CABS
(see note C)

SECURITY ZONE 165.709
(see note A)

FIXED BRIDGE
HOR CL 700 FT
VERT CL 155 FT

RESTRICTED AREA 334.460
(see note A)

MAGNETIC
VAR 7° 45' W (2015)
ANNUAL INCREASE 4'

U.S. Army Corps of Engineers
Charleston District

Production Notes:
This map was produced using the following data sources:
1. Bathymetry data from the Charleston Harbor Channel Survey, 2020.
2. Hydrographic data from the Charleston Harbor Channel Survey, 2020.
3. Aerial photography from the Charleston Harbor Channel Survey, 2020.
4. Topographic data from the Charleston Harbor Channel Survey, 2020.
5. Other data as noted on the map.
Map users are encouraged to use all prudent safety measures.

Legend:

- Depth Soundings
- Chart Symbols
- Obstructions
- Navigation Channel
- Other
- Overhead Power Cables
- Fixed Bridge
- Security Zone
- Restricted Area
- Other

Scale:
Graphic scale showing 0, 125, 250, 500, 750, 1000 feet.

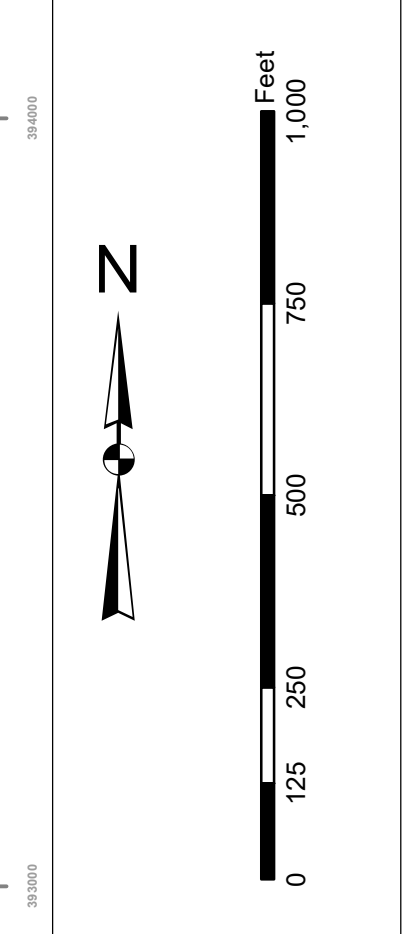
North Arrow:
Magnetic North Arrow pointing towards the top right of the sheet.

| | | | |
|--------------|---|---------------------------|-------------|
| Designed By: | U.S. Army Corps of Engineers | Production Date: | 18 NOV 2022 |
| Reviewed By: | Charleston District | Project Reference Number: | CCW |
| Scale: | 1" = 250' Feet | Survey Type: | CCW |
| Projection: | NAD 1983 StatePlane South Carolina FIPS 3200 Feet | | |

Charleston Upper Harbor Channel Survey
The information depicted on this map represents the results of surveys made on the dates indicated and is not intended to be used for navigation. The general conditions existing at that time are shown. Concluded on: 16 NOV 2022
Charleston, South Carolina

SHEET REFERENCE NUMBER: C002
SHEET 4 OF 5

Production Note:
This map is a preliminary design and is not to be used for construction. It is intended to provide a general overview of the project and is subject to change without notice. All dimensions and elevations are in feet unless otherwise noted. The map is based on the most recent available data and is not intended to represent the actual conditions on the ground. The map is not a substitute for a site visit and should be used in conjunction with other project documents. The map is not intended to be used for navigation. The map is not intended to be used for any other purpose. The map is not intended to be used for any other purpose.



Legend

| Symbol | Description |
|------------------|-----------------|
| [Color swatches] | Depth Soundings |
| [Symbol] | Obstruction |
| [Symbol] | Channel |
| [Symbol] | Bank |
| [Symbol] | Structure |
| [Symbol] | Light |
| [Symbol] | Reference |
| [Symbol] | Other |

| | | |
|---------------------------|--------------|------------------|
| Designed By: | Survey Date: | Production Date: |
| Reviewed By: | 16 NOV 2022 | 16 NOV 2022 |
| Checked By: | 16 NOV 2022 | 16 NOV 2022 |
| Project Reference Number: | 16 NOV 2022 | 16 NOV 2022 |
| Project Name: | 16 NOV 2022 | 16 NOV 2022 |
| Project Location: | 16 NOV 2022 | 16 NOV 2022 |

Charleston Upper Harbor Channel Survey
The information depicted on this map represents the results of surveys made on the dates indicated and is not intended to represent the actual conditions existing at that time.
Concluded on: 16 NOV 2022
Charleston, South Carolina

