

U.S. Army Corps of Engineers
Charleston District

Production Note:
 1. This chart is a hydrographic chart and is not a nautical chart. It is not intended to be used for navigation.
 2. The information on this chart is derived from the most recent available data and is subject to change without notice.
 3. The information on this chart is not intended to be used for navigation.
 4. The information on this chart is not intended to be used for navigation.
 5. The information on this chart is not intended to be used for navigation.

Legend:
 Sounding: 1, 2, 3, 4, 5, 6, 7, 8, 9, 10, 11, 12, 13, 14, 15, 16, 17, 18, 19, 20, 21, 22, 23, 24, 25, 26, 27, 28
 Navigational Aids: Buoy, Light, Daymark, Beacon, Spar, etc.
 Obstructions: Bridge, Pier, etc.
 Other: Dam, Cable and Pipeline Area, etc.

Scale: 1 inch = 250 feet
 0 125 250 375 500 625 750 Feet

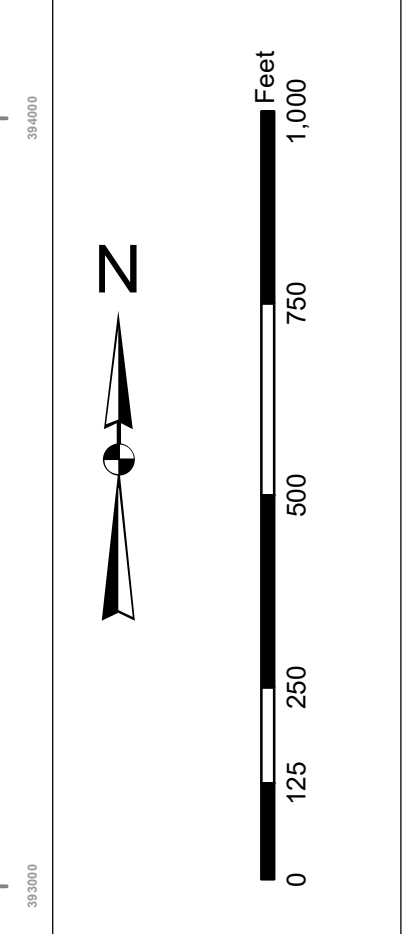
Production Date: 09 MAR 2023
Survey Date: 06 MAR 2023
Project Reference Number: POC002
Survey Cycle: CONDITION
Scale: 1 inch = 250 feet
Projection: NAD 1983 StatePlane South Carolina FIPS 3900 Feet

U.S. Army Corps of Engineers
 CHARLESTON DISTRICT
 800 HARRISON AVE
 CHARLESTON, SC 29405
 CESAC-GIS@USACE.ARMY.MIL

Charleston Upper Harbor Channel Survey
 The information depicted on this map represents the results of surveys made on the dates indicated and call on or reference other charts for general conditions existing at that time.
 Concluded on: 6 MAR 2023
 Charleston, South Carolina

SHEET REFERENCE NUMBER: C002
SHEET 3 OF 5

Production Notes:
 1. This map is a preliminary survey map and is not to be used for navigation.
 2. There are no soundings shown on this map.
 3. Soundings are not to be used for navigation.
 4. This map is not to be used for navigation.
 5. This map is not to be used for navigation.
 6. This map is not to be used for navigation.
 7. This map is not to be used for navigation.
 8. This map is not to be used for navigation.
 9. This map is not to be used for navigation.
 10. This map is not to be used for navigation.

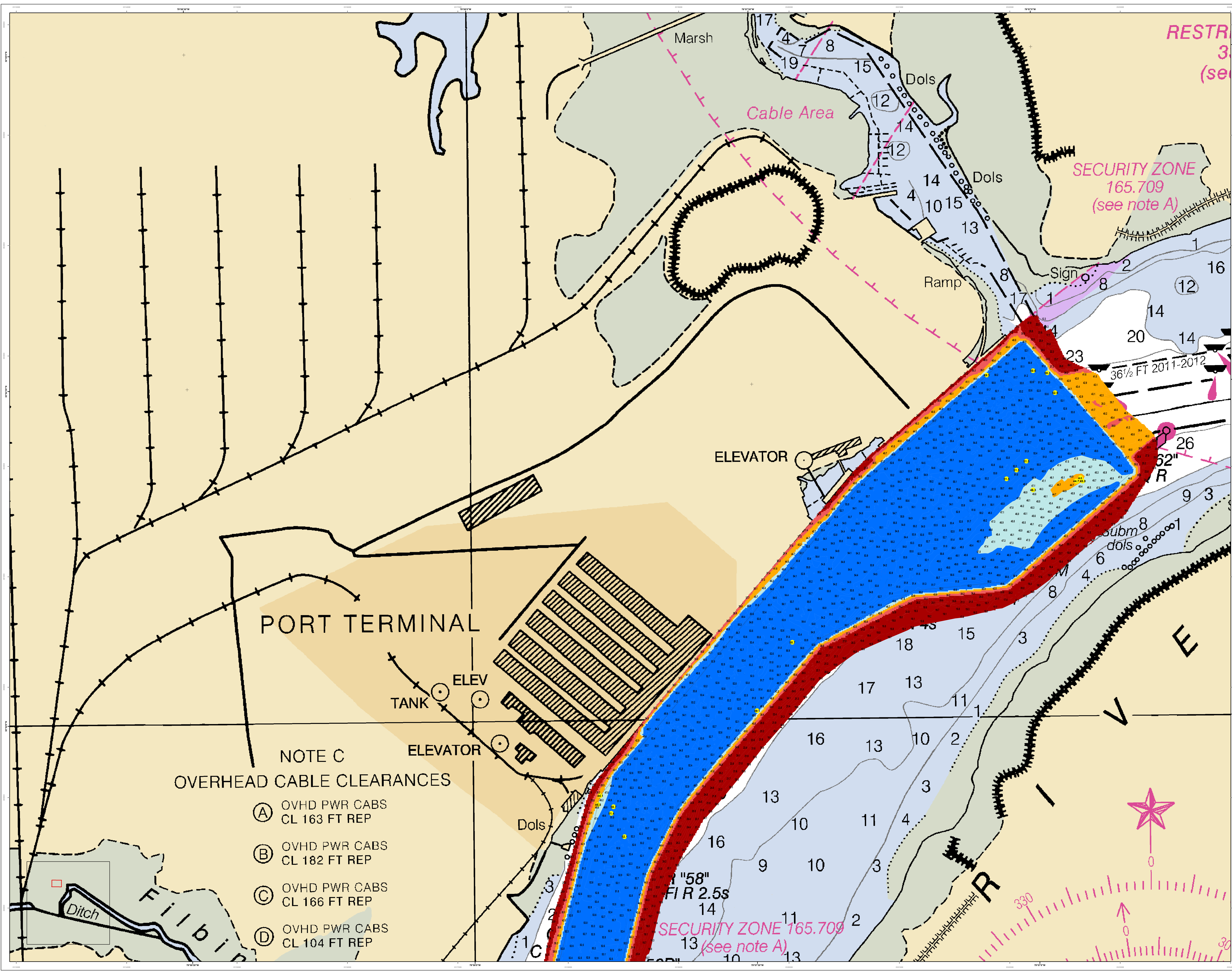


Legend

Symbol/Color	Description
Blue hatched area	Channel
Red hatched area	Bank
Yellow hatched area	Submerged
Black dashed line	Property Boundary
Black solid line	Right-of-Way
Black dashed line with cross-ticks	Utility Line
Black dashed line with dots	Water Main
Black dashed line with triangles	Gas Line
Black dashed line with squares	Telephone Line
Black dashed line with circles	Other Utility
Black dashed line with diamonds	Other Utility
Black dashed line with stars	Other Utility
Black dashed line with crosses	Other Utility
Black dashed line with pluses	Other Utility
Black dashed line with asterisks	Other Utility
Black dashed line with hash marks	Other Utility
Black dashed line with percent signs	Other Utility
Black dashed line with ampersands	Other Utility
Black dashed line with at signs	Other Utility
Black dashed line with dollar signs	Other Utility
Black dashed line with percent signs	Other Utility
Black dashed line with ampersands	Other Utility
Black dashed line with at signs	Other Utility
Black dashed line with dollar signs	Other Utility

U.S. Army Corps of Engineers Charleston District Charleston, South Carolina Savannah Branch Savannah, Georgia	Designed By: J. H. [unreadable] Reviewed By: J. H. [unreadable] Scale: 1 inch = 250 feet Projection: NAD 1983 StatePlane South Carolina FIPS 3800 Feet	Survey Date: 06 MAR 2023 Production Date: 09 MAR 2023 Project Reference Number: [unreadable] Sheet Title: [unreadable] Sheet Number: [unreadable] Sheet Count: [unreadable]
---	---	--

Charleston Upper Harbor Channel Survey
 The information depicted on this map represents the results of surveys made on the dates indicated and is not to be used for navigation. The general conditions existing at that time.
 Concluded on: 6 MAR 2023
 Charleston, South Carolina



**NOTE C
OVERHEAD CABLE CLEARANCES**

- Ⓐ OVHD PWR CABS
CL 163 FT REP
- Ⓑ OVHD PWR CABS
CL 182 FT REP
- Ⓒ OVHD PWR CABS
CL 166 FT REP
- Ⓓ OVHD PWR CABS
CL 104 FT REP

RESTR 3
(see note A)

SECURITY ZONE 165.709
(see note A)

SECURITY ZONE 165.709
(see note A)

