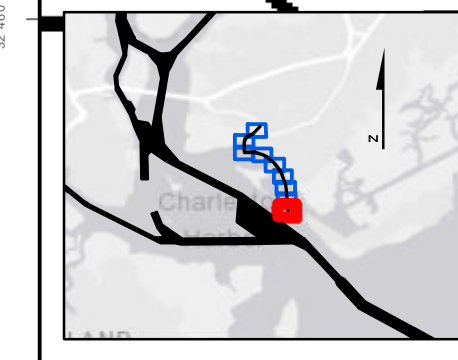


342000

342000

32°46'00"N

32°46'00"N



Shem Creek
 The information depicted on this map represents the results of surveys made on the dates indicated and can only be considered as indicating the general conditions existing at that time.
 Concluded on: **31 July 2018**
 Mount Pleasant, South Carolina

U.S. ARMY ENGINEER DISTRICT
 CORPS OF ENGINEERS
 CHARLESTON, SOUTH CAROLINA
 SPATIAL DATA BRANCH
 69A HAGOOD AVE.
 CHARLESTON, SC 29403
 CESAC-GIS@USACE.ARMY.MIL

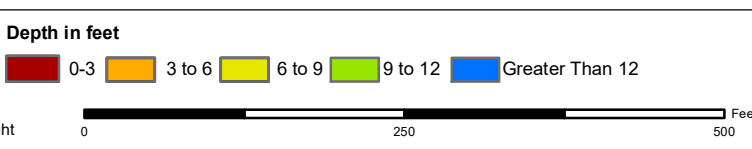
Designed By: eHydro Software v3.82	Survey Date: 31 July 2018	Production Date: 13 Aug 2018
Reviewed By: CCW	Absolute Scale: 1:1,800	Project Reference Number: CESAC-PRA-0002
Reference Scale: 1 inch = 150 feet	Survey Type: Condition	
Projection: NAD 1983 StatePlane South Carolina FIPS 3900 Feet		

Shoalest Sounding
 Sounding may cover several point areas and is calculated per reach quarter area
 "+" indicates sounding above MLLW

USCG Beacon
 Green
 Red
 White

USCG Buoy
 Green
 Red
 Coast Guard Racon

White
 Yellow
 USCG Light

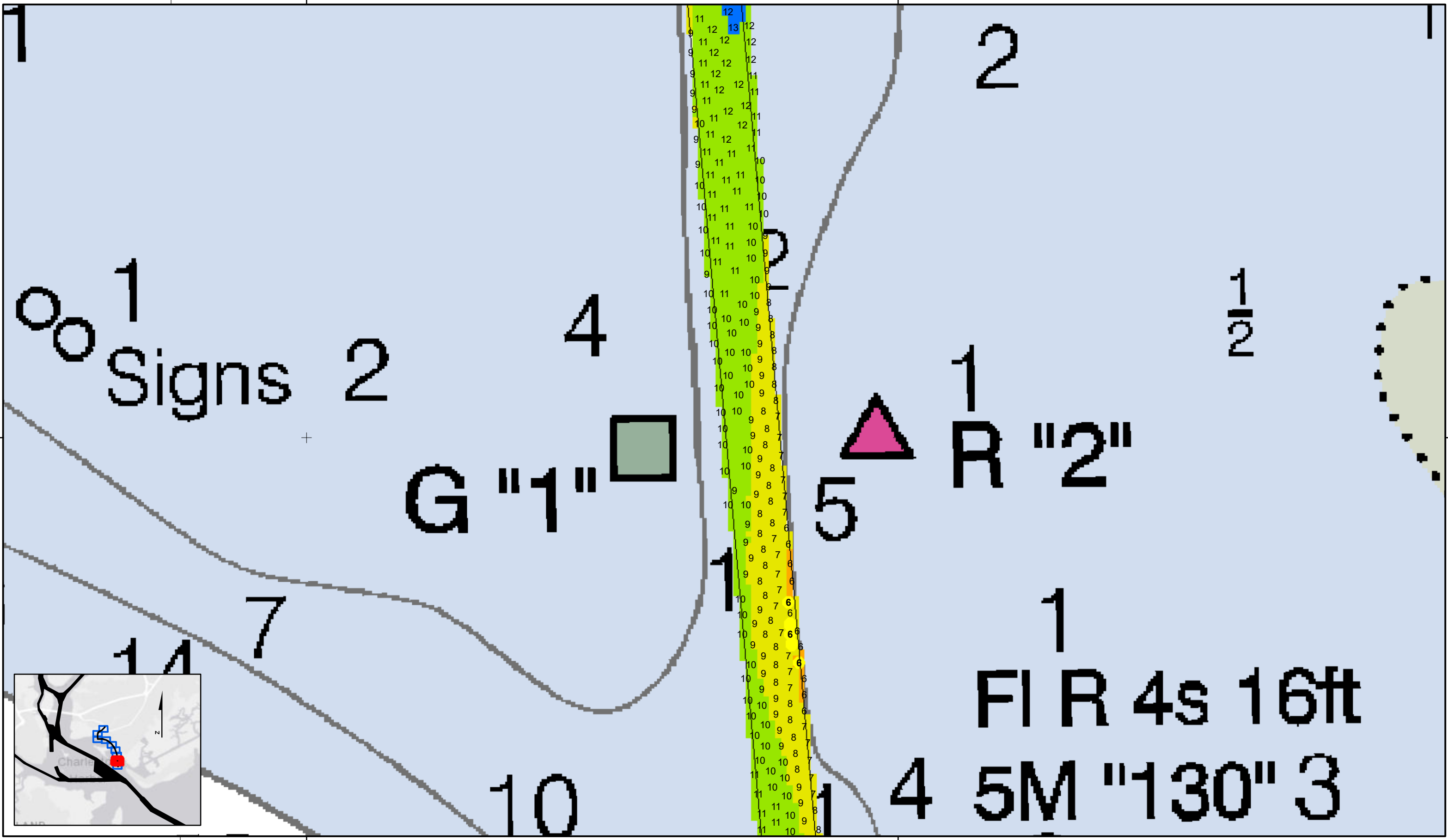


Production Notes:

- The information depicted on this product is for plotting purposes only.
- Vector hydrographic data derived from surveys conducted by the USACE and approved partners.
- Soundings are in feet and refer to Mean Lower Low Water (MLLW).
- Raster Background: PanSharpened Worldview-2 imagery dated 2014.

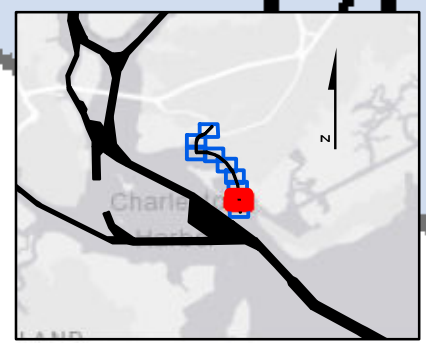
In no event shall the U.S. Army Corps of Engineers, Charleston District Office, Spatial Data Branch be liable for direct, indirect, incidental, consequential or special damages of any kind, including, but not limited to, loss of anticipated profits or benefits arising out of use of or reliance on the data.
 These data sets have been developed from the best available sources. Although efforts have been made to ensure that the database are accurate and reliable, errors and variable conditions originating from physical sources used to develop the data may be reflected in the data supplied.
 This product is not intended to be used for navigation.
 Mariners are encouraged to use all prudent safety measures.





343000

343000



SHEET REFERENCE NUMBER C002 Page 2 of 9	Shem Creek The information depicted on this map represents the results of surveys made on the dates indicated and can only be considered as indicating the general conditions existing at that time. Concluded on: 31 July 2018 Mount Pleasant, South Carolina	U.S. ARMY ENGINEER DISTRICT CORPS OF ENGINEERS CHARLESTON, SOUTH CAROLINA SPATIAL DATA BRANCH 69A HAGOOD AVE. CHARLESTON, SC 29403 CESAC-GIS@USACE.ARMY.MIL	Designed By: eHydro Software v3.82 Reviewed By: CCW Reference Scale: 1 inch = 150 feet Projection: NAD 1983 StatePlane South Carolina FIPS 3900 Feet	Survey Date: 31 July 2018 Project Reference Number: CESAC-PRA-0002 Survey Type: Condition	Production Date: 13 Aug 2018
--	---	---	---	---	--

Shoalest Sounding ● Sounding <i>Sounding may cover several point areas and is calculated per reach quarter area</i> *+ indicates sounding above MLLW	USCG Beacon ■ Green ▲ Red □ White	USCG Buoy ● Green ● Red ● Coast Guard Racon	● White ● Yellow ● USCG Light	Depth in feet 0-3 3 to 6 6 to 9 9 to 12 Greater Than 12
--	---	---	-------------------------------------	---

Production Notes:

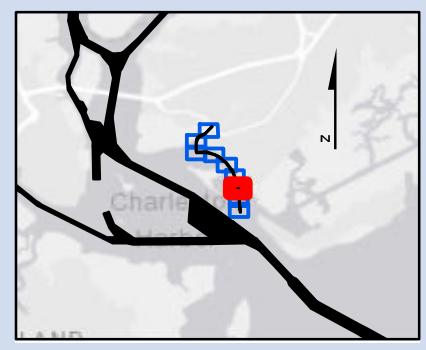
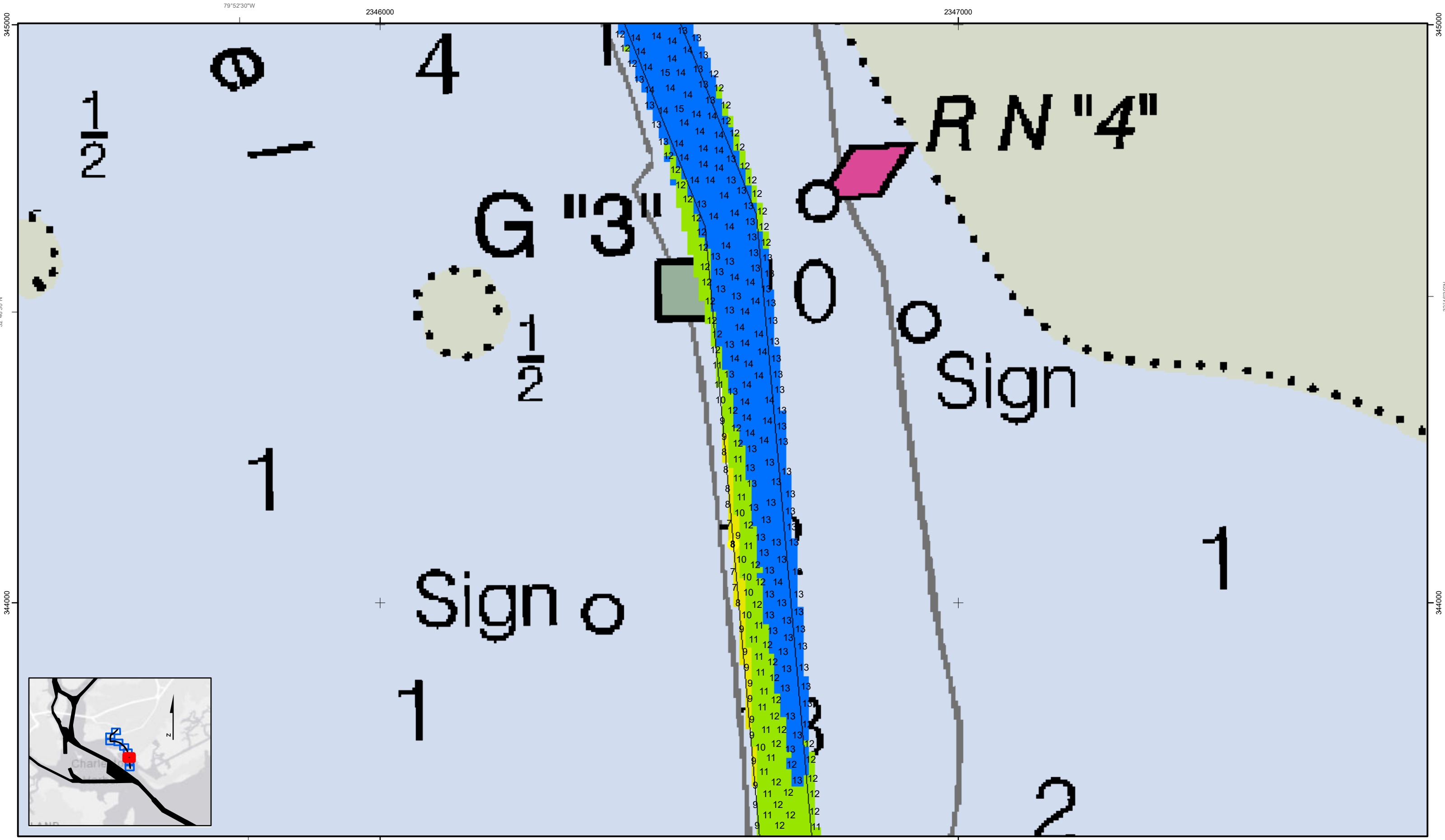
- The information depicted on this product is for plotting purposes only.
- Vector hydrographic data derived from surveys conducted by the USACE and approved partners.
- Soundings are in feet and refer to Mean Lower Low Water (MLLW).
- Raster Background: Panharpened Worldview-2 imagery dated 2014.

In no event shall the U.S. Army Corps of Engineers, Charleston District Office, Spatial Data Branch be liable for direct, indirect, incidental, consequential or special damages of any kind, including, but not limited to, loss of anticipated profits or benefits arising out of use of or reliance on the data.

These data sets have been developed from the best available sources. Although efforts have been made to ensure that the datasets are accurate and reliable, errors and variable conditions originating from physical sources used to develop the data may be reflected in the data supplied.

This product is not intended to be used for navigation. Mariners are encouraged to use all prudent safety measures.

U.S. Army Corps of Engineers
Charleston District



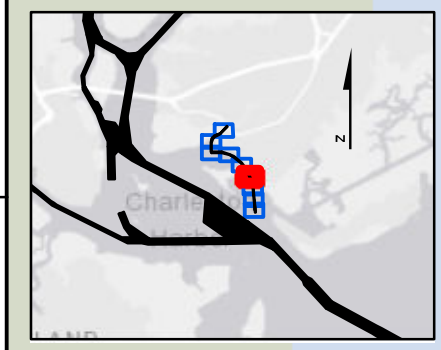
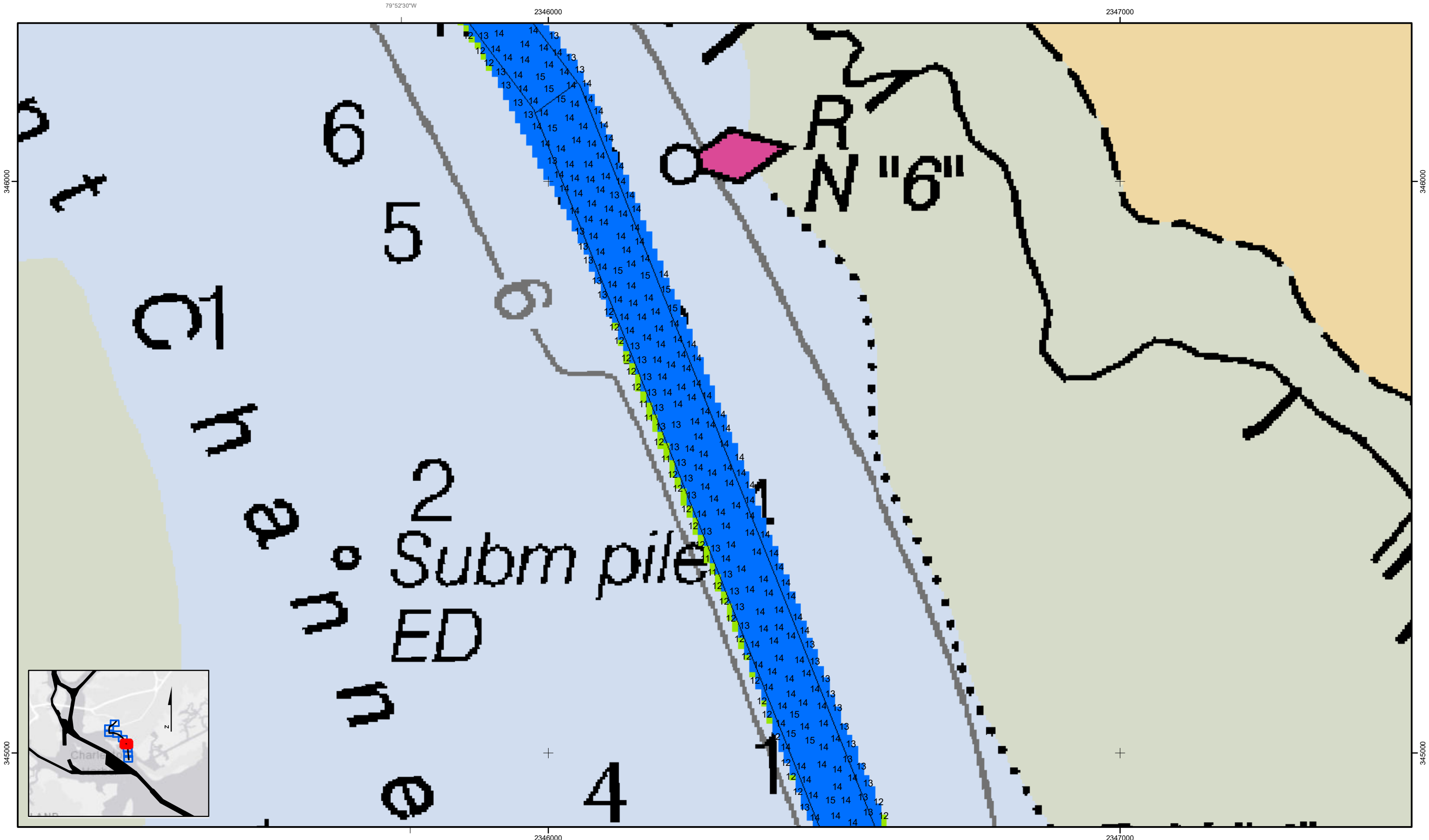
SHEET REFERENCE NUMBER C002 Page 3 of 9	Shem Creek The information depicted on this map represents the results of surveys made on the dates indicated and can only be considered as indicating the general conditions existing at that time. Concluded on: 31 July 2018 Mount Pleasant, South Carolina	U.S. ARMY ENGINEER DISTRICT CORPS OF ENGINEERS CHARLESTON, SOUTH CAROLINA SPATIAL DATA BRANCH 69A HAGOOD AVE. CHARLESTON, SC 29403 CESAC-GIS@USACE.ARMY.MIL	Designed By: eHydro Software v3.82 Reviewed By: CCW Reference Scale: 1 inch = 150 feet Projection: NAD 1983 StatePlane South Carolina FIPS 3900 Feet	Survey Date: 31 July 2018 Project Reference Number: CESAC-PRA-0002 Survey Type: Condition	Production Date: 13 Aug 2018
--	---	---	---	---	--

Shoalest Sounding Sounding <i>Sounding may cover several point areas and is calculated per reach quarter area</i> "+ " indicates sounding above MLLW	USCG Beacon Green Red White	USCG Buoy Green Red Coast Guard Racon	White Yellow USCG Light	Depth in feet 0-3 3 to 6 6 to 9 9 to 12 Greater Than 12
--	---	---	-------------------------------	---

Production Notes:
 1. The information depicted on this product is for plotting purposes only.
 2. Vector hydrographic data derived from surveys conducted by the USACE and approved partners.
 3. Soundings are in feet and refer to Mean Lower Low Water (MLLW).
 4. Raster Background: PanSharpened Worldview-2 imagery dated 2014.

In no event shall the U.S. Army Corps of Engineers, Charleston District Office, Spatial Data Branch be liable for direct, indirect, incidental, consequential or special damages of any kind, including, but not limited to, loss of anticipated profits or benefits arising out of use of or reliance on the data.
 These data sets have been developed from the best available sources. Although efforts have been made to ensure that the datasets are accurate and reliable, errors and variable conditions originating from physical sources used to develop the data may be reflected in the data supplied.
This product is not intended to be used for navigation.
Mariners are encouraged to use all prudent safety measures.

U.S. Army Corps of Engineers
 Charleston District



Shem Creek
 The information depicted on this map represents the results of surveys made on the dates indicated and can only be considered as indicating the general conditions existing at that time.
 Concluded on: **31 July 2018**
 Mount Pleasant, South Carolina

U.S. ARMY ENGINEER DISTRICT
 CORPS OF ENGINEERS
 CHARLESTON, SOUTH CAROLINA
 SPATIAL DATA BRANCH
 69A HAGOOD AVE.
 CHARLESTON, SC 29403
 CESAC-GIS@USACE.ARMY.MIL

Designed By: eHydro Software v3.82	Survey Date: 31 July 2018	Production Date: 13 Aug 2018
Reviewed By: CCW	Absolute Scale: 1:1,800	Project Reference Number: CESAC-PRA-0002
Reference Scale: 1 inch = 150 feet	Survey Type: Condition	
Projection: NAD 1983 StatePlane South Carolina FIPS 3900 Feet		

Shoalest Sounding ● Sounding Sounding may cover several point areas and is calculated per reach quarter area *+ indicates sounding above MLLW	USCG Beacon ■ Green ▲ White	USCG Buoy ● Green ● Red ● Coast Guard Racon	● White ● Yellow ● USCG Light	Depth in feet ■ 0-3 ■ 3 to 6 ■ 6 to 9 ■ 9 to 12 ■ Greater Than 12
---	--	---	-------------------------------------	---

Production Notes:
 1. The information depicted on this product is for plotting purposes only.
 2. Vector hydrographic data derived from surveys conducted by the USACE and approved partners.
 3. Soundings are in feet and refer to Mean Lower Low Water (MLLW).
 4. Raster Background: PanSharpened Worldview-2 imagery dated 2014.

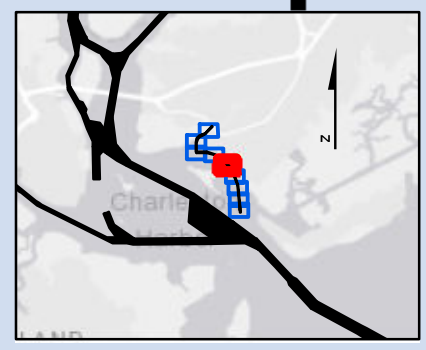
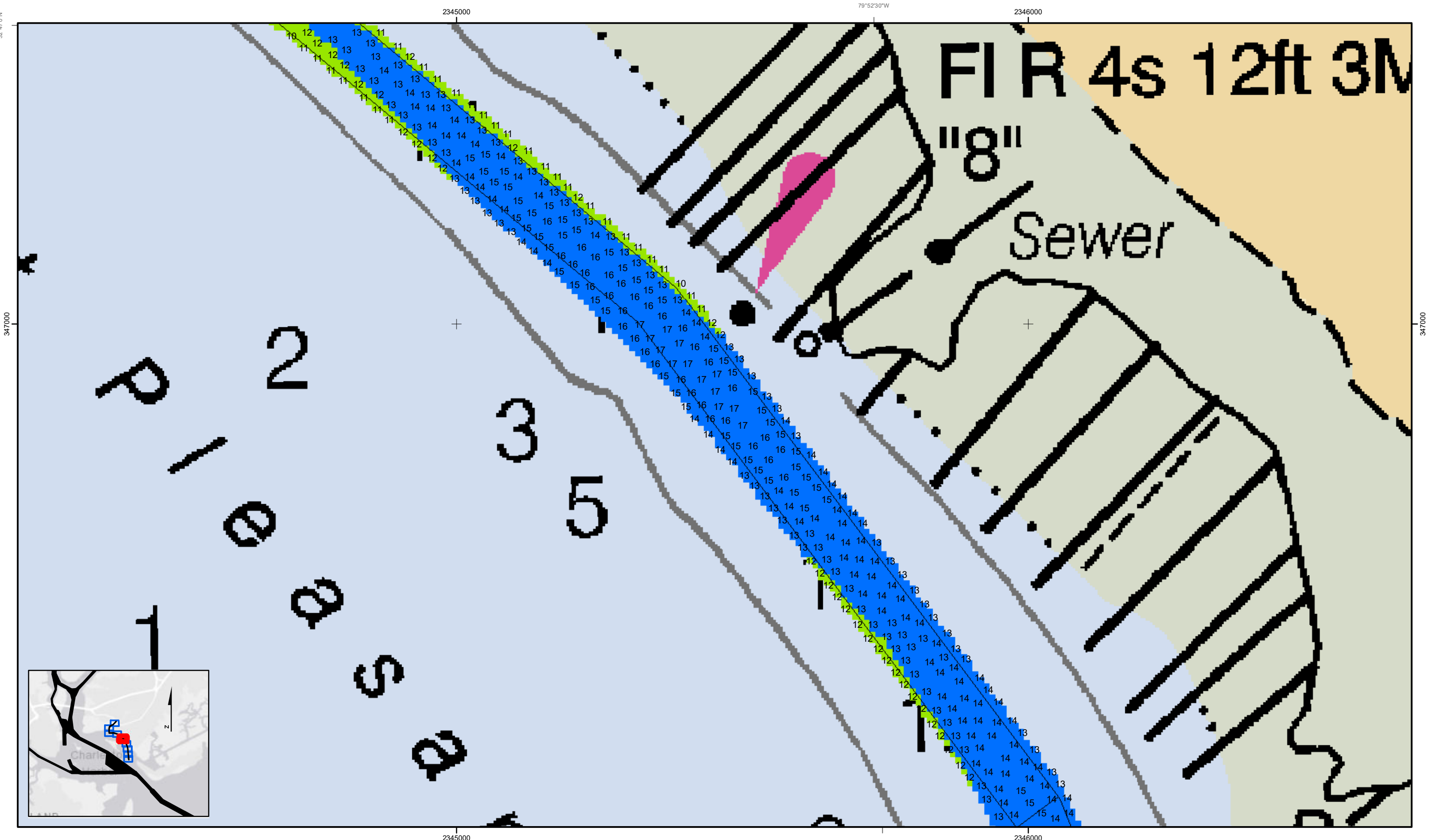
In no event shall the U.S. Army Corps of Engineers, Charleston District Office, Spatial Data Branch be liable for direct, indirect, incidental, consequential or special damages of any kind, including, but not limited to, loss of anticipated profits or benefits arising out of use of or reliance on the data.
 These data sets have been developed from the best available sources. Although efforts have been made to ensure that the datasets are accurate and reliable, errors and variable conditions originating from physical sources used to develop the data may be reflected in the data supplied.
 This product is not intended to be used for navigation.
 Mariners are encouraged to use all prudent safety measures.



79°52'30"W 2346000 2347000

345000 345000

79°52'30"W 2346000 2347000



Shem Creek
 The information depicted on this map represents the results of surveys made on the dates indicated and can only be considered as indicating the general conditions existing at that time.
 Concluded on: **31 July 2018**
 Mount Pleasant, South Carolina

U.S. ARMY ENGINEER DISTRICT
 CORPS OF ENGINEERS
 CHARLESTON, SOUTH CAROLINA
 SPATIAL DATA BRANCH
 69A HAGOOD AVE.
 CHARLESTON, SC 29403
 CESAC-GIS@USACE.ARMY.MIL

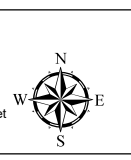
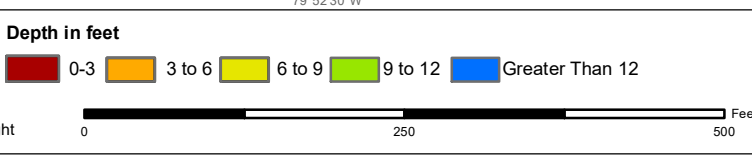
Designed By: eHydro Software v3.82	Survey Date: 31 July 2018	Production Date: 13 Aug 2018
Reviewed By: CCW	Absolute Scale: 1:1,800	Project Reference Number: CESAC-PRA-0002
Reference Scale: 1 inch = 150 feet	Survey Type: Condition	
Projection: NAD 1983 StatePlane South Carolina FIPS 3900 Feet		

Shoalest Sounding
 ● Sounding
Sounding may cover several point areas and is calculated per reach quarter area
 *+ indicates sounding above MLLW

USCG Beacon
 ■ Green
 ▲ Red
 □ White

USCG Buoy
 ● Green
 ● Red
 ● Coast Guard Racon

○ White
 ● Yellow
 ● USCG Light



Production Notes:

- The information depicted on this product is for plotting purposes only.
- Vector hydrographic data derived from surveys conducted by the USACE and approved partners.
- Soundings are in feet and refer to Mean Lower Low Water (MLLW).
- Raster Background: Panaharpenn Worldview-2 imagery dated 2014.

In no event shall the U.S. Army Corps of Engineers, Charleston District Office, Spatial Data Branch be liable for direct, indirect, incidental, consequential or special damages of any kind, including, but not limited to, loss of anticipated profits or benefits arising out of use of or reliance on the data.
 These data sets have been developed from the best available sources. Although efforts have been made to ensure that the datasets are accurate and reliable, errors and variable conditions originating from physical sources used to develop the data may be reflected in the data supplied.
 This product is not intended to be used for navigation.
 Mariners are encouraged to use all prudent safety measures.



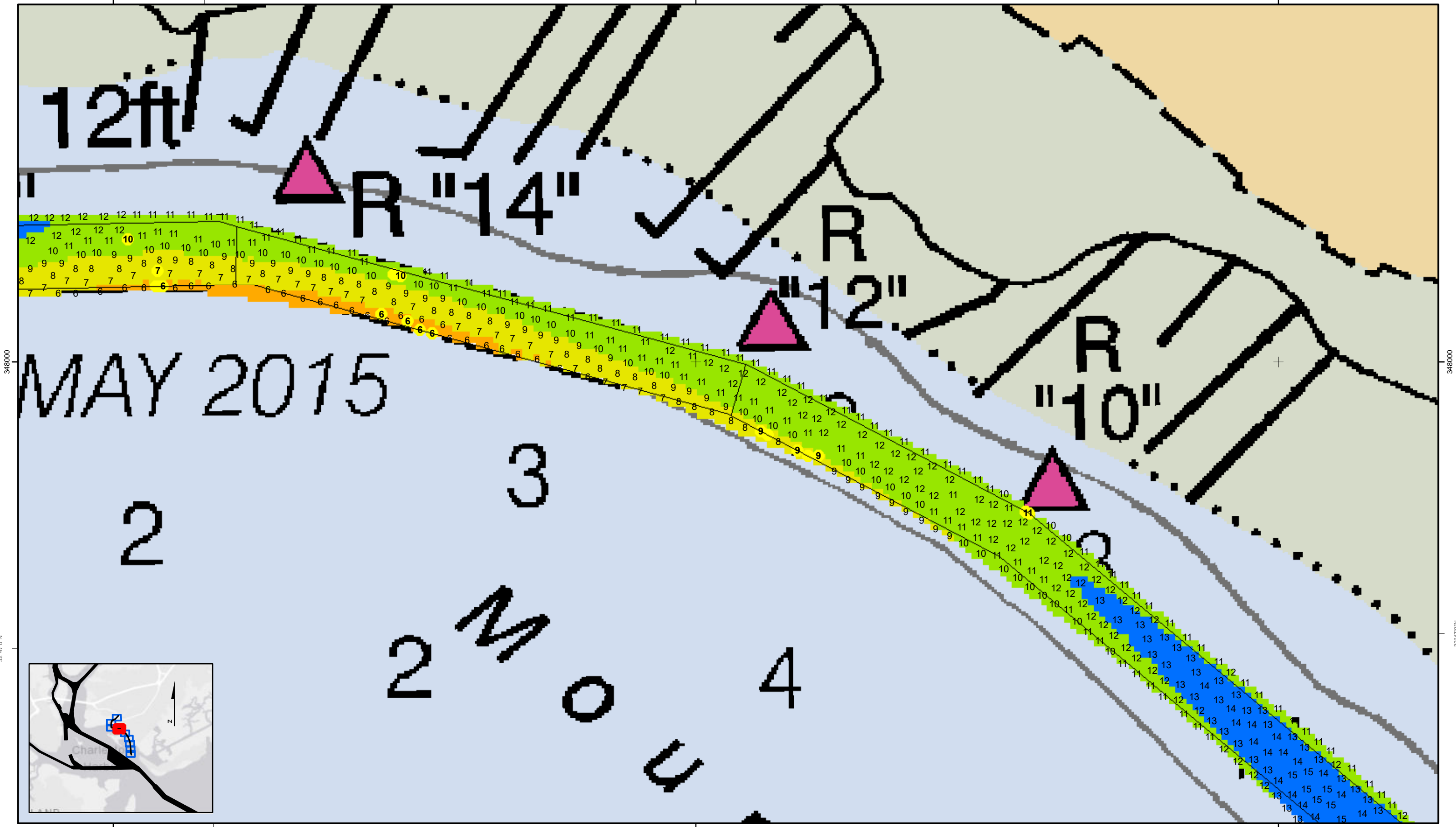
32°47'0"N
 347000
 SHEET REFERENCE NUMBER
C002
 Page 5 of 9

79°52'30"W
 2345000
 79°52'30"W
 2346000
 347000

2343000 79°53'0"W

2344000

2345000

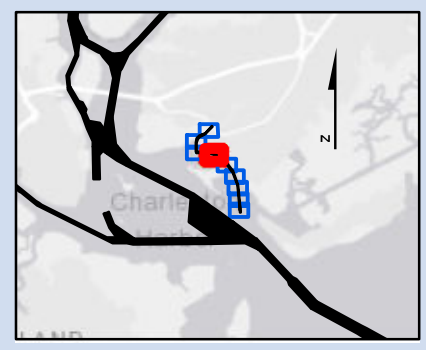


348000

348000

32°47'0"N

32°47'0"N



2343000 79°53'0"W

2344000

2345000

SHEET REFERENCE NUMBER C002 Page 6 of 9	Shem Creek The information depicted on this map represents the results of surveys made on the dates indicated and can only be considered as indicating the general conditions existing at that time. Concluded on: 31 July 2018 Mount Pleasant, South Carolina	U.S. ARMY ENGINEER DISTRICT CORPS OF ENGINEERS CHARLESTON, SOUTH CAROLINA SPATIAL DATA BRANCH 69A HAGOOD AVE. CHARLESTON, SC 29403 CESAC-GIS@USACE.ARMY.MIL	Designed By: eHydro Software v3.82 Reviewed By: CCW Reference Scale: 1 inch = 150 feet Projection: NAD 1983 StatePlane South Carolina FIPS 3900 Feet	Survey Date: 31 July 2018 Project Reference Number: CESAC-PRA-0002 Survey Type: Condition	Production Date: 13 Aug 2018
--	---	---	---	---	--

Shoalest Sounding Sounding <i>Sounding may cover several point areas and is calculated per reach quarter area</i> "+." indicates sounding above MLLW	USCG Beacon Green Red White	USCG Buoy Green Red Coast Guard Racon	White Yellow USCG Light	Depth in feet 0-3 3 to 6 6 to 9 9 to 12 Greater Than 12
--	---	---	-------------------------------	---

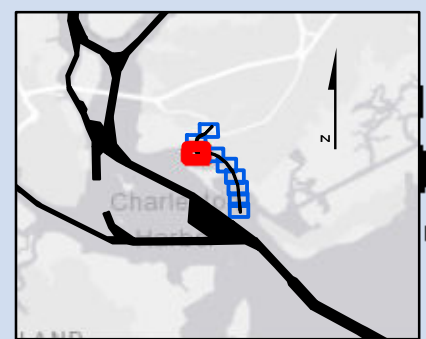
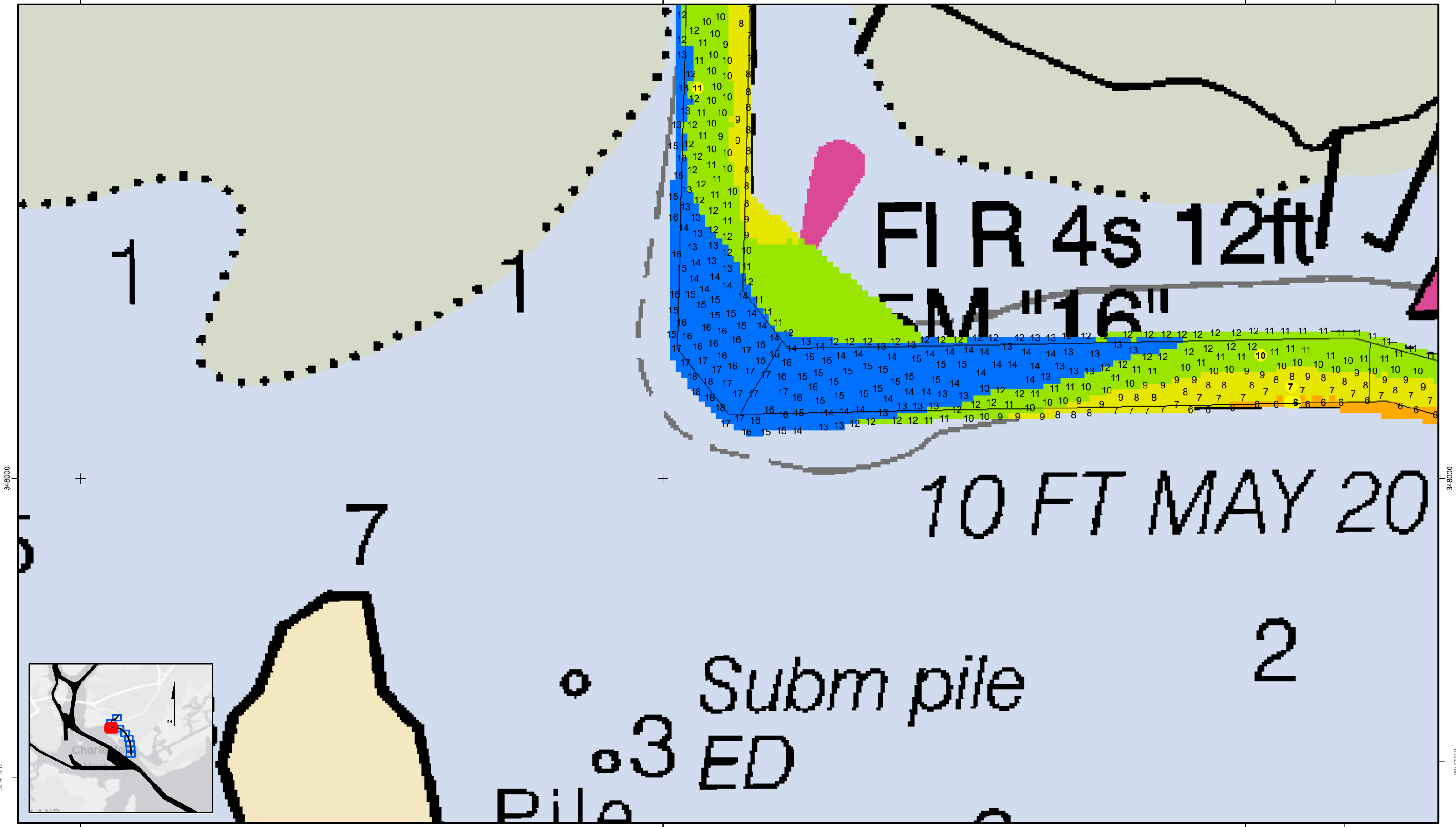
Production Notes:

- The information depicted on this product is for plotting purposes only.
- Vector hydrographic data derived from surveys conducted by the USACE and approved partners.
- Soundings are in feet and refer to Mean Lower Low Water (MLLW).
- Raster Background: Panharpened Worldview-2 imagery dated 2014.

In no event shall the U.S. Army Corps of Engineers, Charleston District Office, Spatial Data Branch be liable for direct, indirect, incidental, consequential or special damages of any kind, including, but not limited to, loss of anticipated profits or benefits arising out of use of or reliance on the data.

These data sets have been developed from the best available sources. Although efforts have been made to ensure that the database are accurate and reliable, errors and variable conditions originating from physical sources used to develop the data may be reflected in the data supplied.

This product is not intended to be used for navigation. Mariners are encouraged to use all prudent safety measures.



Shem Creek
 The information depicted on this map represents the results of surveys made on the dates indicated and can only be considered as indicating the general conditions existing at that time.
 Concluded on: **31 July 2018**
 Mount Pleasant, South Carolina

U.S. ARMY ENGINEER DISTRICT CORPS OF ENGINEERS CHARLESTON, SOUTH CAROLINA	Designed By: eHydro Software v3.82	Survey Date: 31 July 2018	Production Date: 13 Aug 2018
SPATIAL DATA BRANCH 69A HAGOOD AVE. CHARLESTON, SC 29403 CESAC-GIS@USACE.ARMY.MIL	Reviewed By: CCW	Absolute Scale: 1:1,800	Project Reference Number: CESAC-PRA-0002
	Reference Scale: 1 inch = 150 feet	Survey Type: Condition	
	Projection: NAD 1983 StatePlane South Carolina FIPS 3900 Feet		

Shoalest Sounding
 ● Sounding
 Sounding may cover several point areas and is calculated per reach quarter area
 *+ indicates sounding above MLLW

USCG Beacon
 ● Green
 ▲ Red
 □ White

USCG Buoy
 ● Green
 ● Red
 ● Coast Guard Racon

○ White
 ● Yellow
 ● USCG Light

Depth in feet
 0-3 3 to 6 6 to 9 9 to 12 Greater Than 12

0 250 500 Feet

Production Notes:

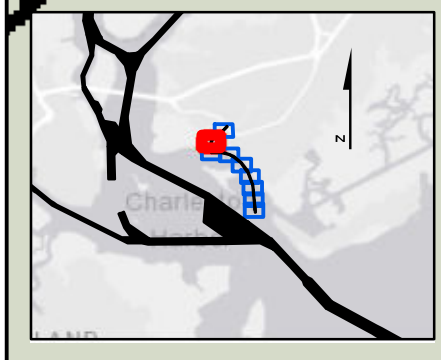
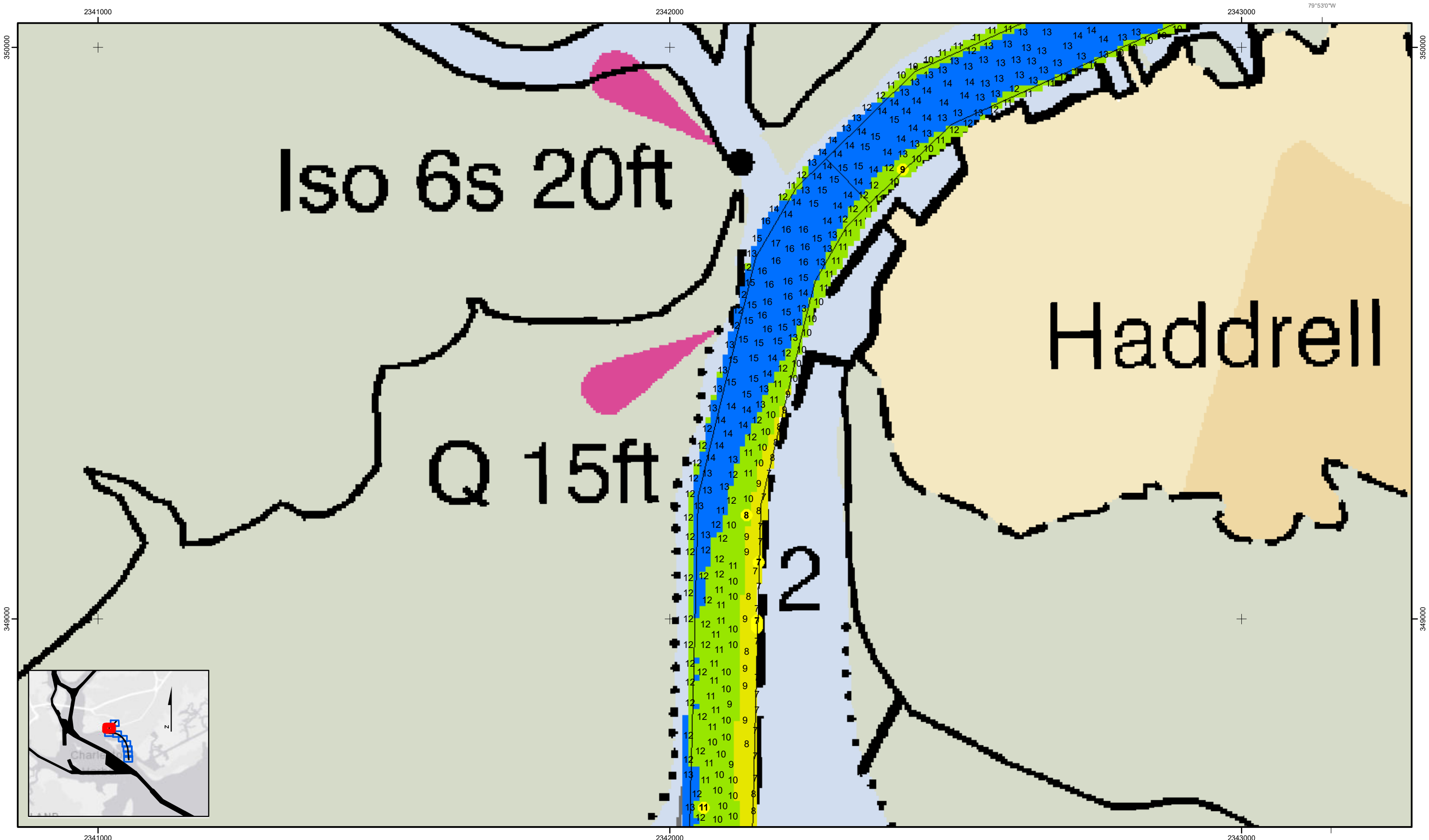
- The information depicted on this product is for plotting purposes only.
- Vector hydrographic data derived from surveys conducted by the USACE and approved partners.
- Soundings are in feet and refer to Mean Lower Low Water (MLLW).
- Raster Background: PanSharpened Worldview-2 imagery dated 2014.

In no event shall the U.S. Army Corps of Engineers, Charleston District Office, Spatial Data Branch be liable for direct, indirect, incidental, consequential or special damages of any kind, including, but not limited to, loss of anticipated profits or benefits arising out of use of or reliance on the data.

These data sets have been developed from the best available sources. Although efforts have been made to ensure that the datasets are accurate and reliable, errors and variable conditions originating from physical sources used to develop the data may be reflected in the data supplied.

This product is not intended to be used for navigation. Mariners are encouraged to use all prudent safety measures.

U.S. Army Corps of Engineers
 Charleston District



Shem Creek
 The information depicted on this map represents the results of surveys made on the dates indicated and can only be considered as indicating the general conditions existing at that time.
 Concluded on: **31 July 2018**
 Mount Pleasant, South Carolina

U.S. ARMY ENGINEER DISTRICT
 CORPS OF ENGINEERS
 CHARLESTON, SOUTH CAROLINA
 SPATIAL DATA BRANCH
 69A HAGOOD AVE.
 CHARLESTON, SC 29403
 CESAC-GIS@USACE.ARMY.MIL

Designed By: eHydro Software v3.82	Survey Date: 31 July 2018	Production Date: 13 Aug 2018
Reviewed By: CCW	Absolute Scale: 1:1,800	Project Reference Number: CESAC-PRA-0002
Reference Scale: 1 inch = 150 feet	Survey Type: Condition	
Projection: NAD 1983 StatePlane South Carolina FIPS 3900 Feet		

Shoalest Sounding
 ● Sounding
Sounding may cover several point areas and is calculated per reach quarter area
 *+ indicates sounding above MLLW

USCG Beacon
 ● Green
 ▲ Red
 □ White

USCG Buoy
 ● Green
 ● Red
 ● Coast Guard Racon

● White
 ● Yellow
 ● USCG Light

Depth in feet

0-3 3 to 6 6 to 9 9 to 12 Greater Than 12

0 250 500 Feet

Production Notes:

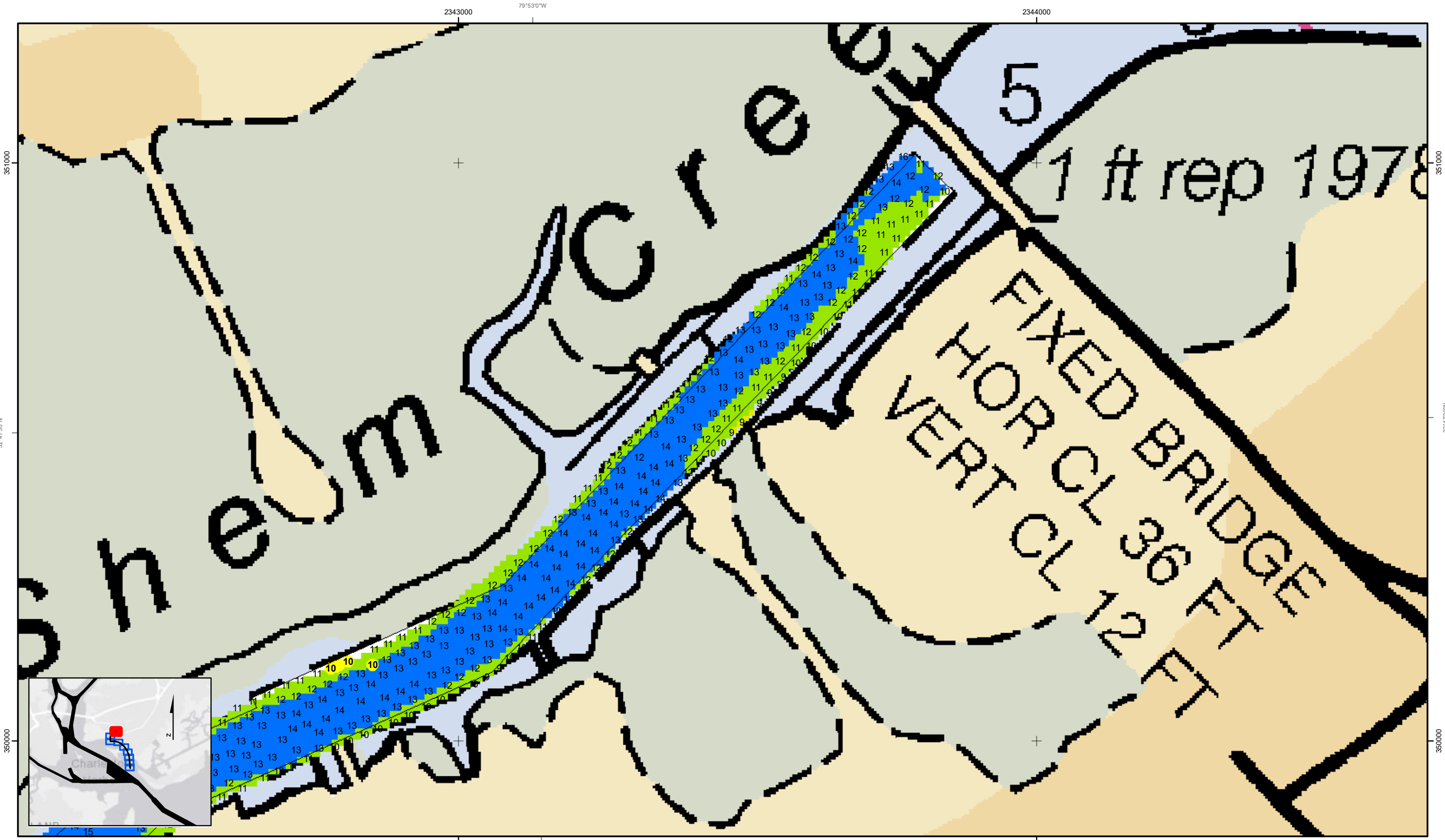
- The information depicted on this product is for plotting purposes only.
- Vector hydrographic data derived from surveys conducted by the USACE and approved partners.
- Soundings are in feet and refer to Mean Lower Low Water (MLLW).
- Raster Background: PanSharpened Worldview-2 imagery dated 2014.

In no event shall the U.S. Army Corps of Engineers, Charleston District Office, Spatial Data Branch be liable for direct, indirect, incidental, consequential or special damages of any kind, including, but not limited to, loss of anticipated profits or benefits arising out of use of or reliance on the data.

These data sets have been developed from the best available sources. Although efforts have been made to ensure that the datasets are accurate and reliable, errors and variable conditions originating from physical sources used to develop the data may be reflected in the data supplied.

This product is not intended to be used for navigation.
 Mariners are encouraged to use all prudent safety measures.





351000
350000
32°47'30"N
350000

2343000
79°53'0"W
2344000
2343000
79°53'0"W
2344000

351000
350000
32°47'30"N
350000

Shem Creek
The information depicted on this map represents the results of surveys made on the dates indicated and can only be considered as indicating the general conditions existing at that time.
Concluded on: **31 July 2018**
Mount Pleasant, South Carolina

U.S. ARMY ENGINEER DISTRICT
CORPS OF ENGINEERS
CHARLESTON, SOUTH CAROLINA
SPATIAL DATA BRANCH
69A HAGOOD AVE.
CHARLESTON, SC 29403
CESAC-GIS@USACE.ARMY.MIL

Designed By: eHydro Software v3.8.2	Survey Date: 31 July 2018	Production Date: 13 Aug 2018
Reviewed By: CCW	Absolute Scale: 1:1,800	Project Reference Number: CESAC-PRA-0002
Reference Scale: 1 inch = 150 feet	Survey Type: Condition	
Projection: NAD 1983 StatePlane South Carolina FIPS 3900 Feet		

Shoalest Sounding
Sounding may cover several point areas and is calculated per reach quarter area
*+ indicates sounding above MLLW

USCG Beacon
Green
Red
White

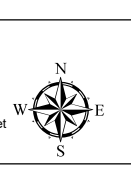
USCG Buoy
Green
Red
Coast Guard Racon

White
Yellow
USCG Light

Depth in feet

0-3	3 to 6	6 to 9	9 to 12	Greater Than 12
-----	--------	--------	---------	-----------------

0 250 500 Feet



Production Notes:
1. The information depicted on this product is for plotting purposes only.
2. Vector hydrographic data derived from surveys conducted by the USACE and approved partners. Soundings are in feet and refer to Mean Lower Low Water (MLLW).
3. Raster Background: PanSharpened Worldview-2 imagery dated 2014.
In no event shall the U.S. Army Corps of Engineers, Charleston District Office, Spatial Data Branch be liable for direct, indirect, incidental, consequential or special damages of any kind, including, but not limited to, loss of anticipated profits or benefits arising out of use of or reliance on the data.
These data sets have been developed from the best available sources. Although efforts have been made to ensure that the datasets are accurate and reliable, errors and variable conditions originating from physical sources used to develop the data may be reflected in the data supplied.
This product is not intended to be used for navigation.
Mariners are encouraged to use all prudent safety measures.



SHEET REFERENCE NUMBER
C002
Page 9 of 9