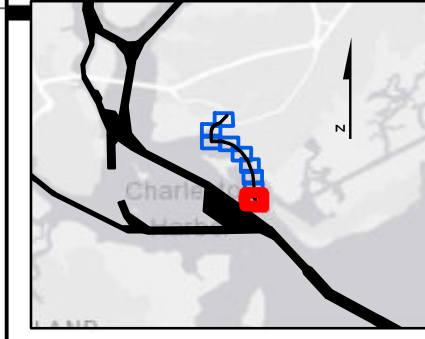


342000

342000

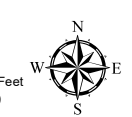
32°46'0"N

32°46'0"N



SHEET REFERENCE NUMBER <b>C002</b> Page 1 of 9	<b>Shem Creek</b> The information depicted on this map represents the results of surveys made on the dates indicated and can only be considered as indicating the general conditions existing at that time. Concluded on: <b>25 Jan 2019</b> Mount Pleasant, South Carolina	U.S. ARMY ENGINEER DISTRICT CORPS OF ENGINEERS CHARLESTON, SOUTH CAROLINA  SPATIAL DATA BRANCH 69A HAGOOD AVE CHARLESTON, SC 29403 CESAC-GIS@USACE.ARMY.MIL	Designed By: <b>eHydro Software v3.82</b> Reviewed By: <b>CCW</b> Reference Scale: <b>1 inch = 150 feet</b> Projection: <b>NAD 1983 StatePlane South Carolina FIPS 3900 Feet</b>	Survey Date: <b>25 Jan 2019</b> Project Reference Number: <b>CESAC-PRA-0002</b> Survey Type: <b>Condition</b>	Production Date: <b>28 Jan 2019</b>
--	--	--	---	---	-------------------------------------

<b>Shoalest Sounding</b> ● Sounding Sounding may cover several point areas and is calculated per reach quarter area "+ " indicates sounding above MLLW	<b>USCG Beacon</b> ■ Green ▲ Red □ White * indicates sounding above MLLW	<b>USCG Buoy</b> ● Green ● Red ● Coast Guard Racon	● White ● Yellow ● USCG Light	<b>Depth in feet</b> 0-3 (Red) 3 to 6 (Orange) 6 to 9 (Yellow) 9 to 12 (Light Green) Greater Than 12 (Blue)
---	--	---	-------------------------------------	--



**Production Notes:**

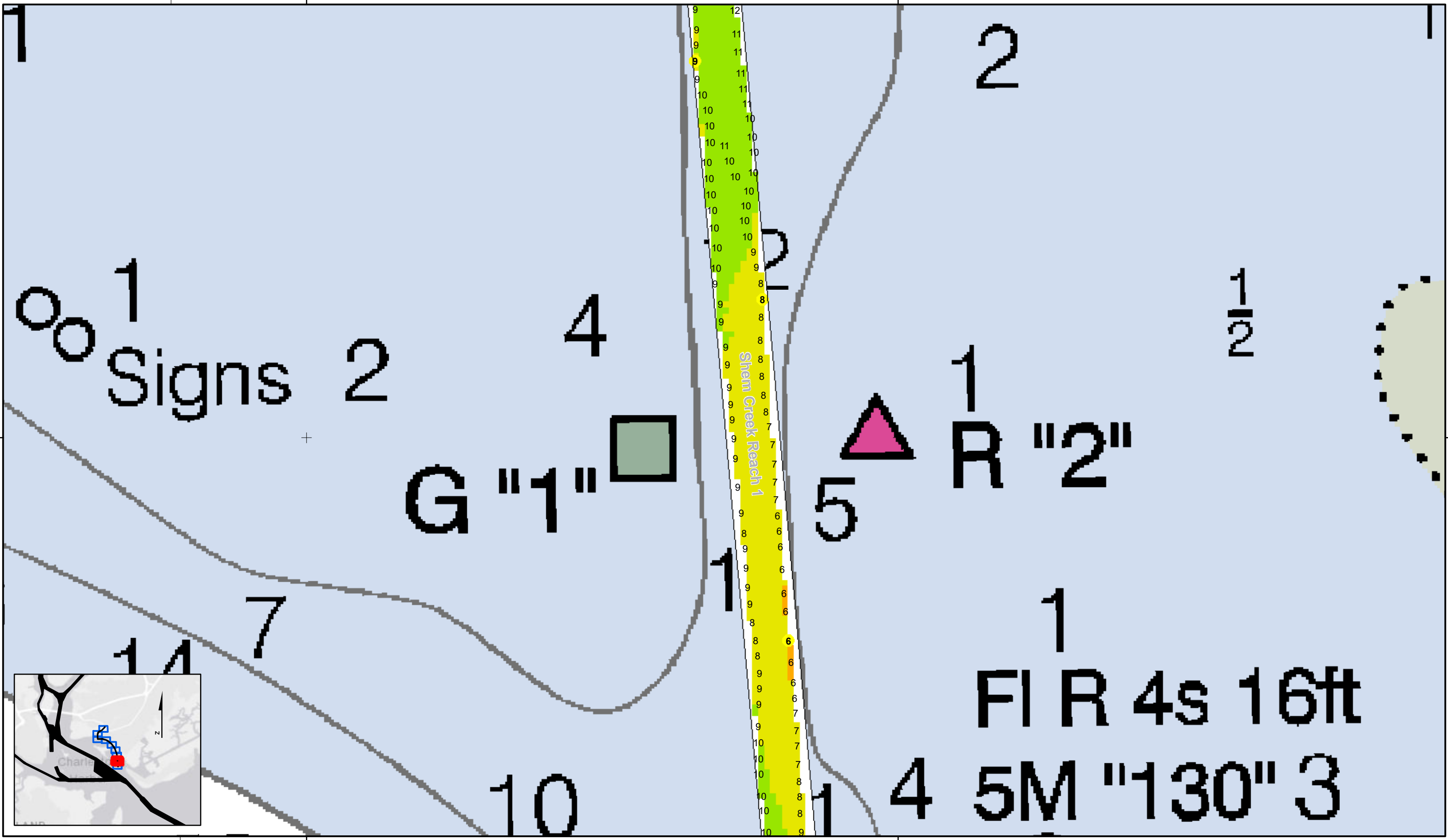
- The information depicted on this product is for plotting purposes only.
- Vector hydrographic data derived from surveys conducted by the USACE and approved partners.
- Soundings are in feet and refer to Mean Lower Low Water (MLLW).
- Raster Background: Panshaped Worldview-2 imagery dated 2014.

In no event shall the U.S. Army Corps of Engineers, Charleston District Office, Spatial Data Branch be liable for direct, indirect, incidental, consequential or special damages of any kind, including, but not limited to, loss of anticipated profits or benefits arising out of use of or reliance on the data.

These data sets have been developed from the best available sources. Although efforts have been made to ensure that the database is accurate and reliable, errors and variable conditions originating from physical sources used to develop the data may be reflected in the data supplied.

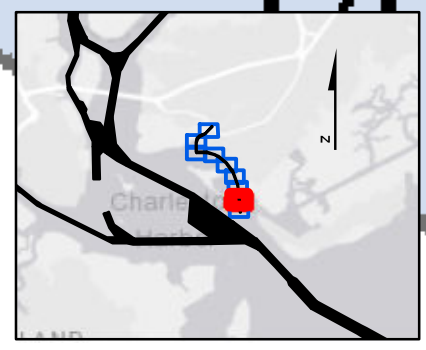
This product is not intended to be used for navigation. Mariners are encouraged to use all prudent safety measures.





343000

343000



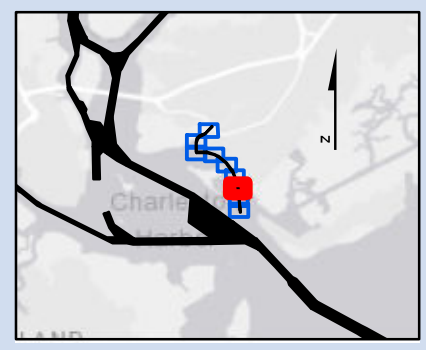
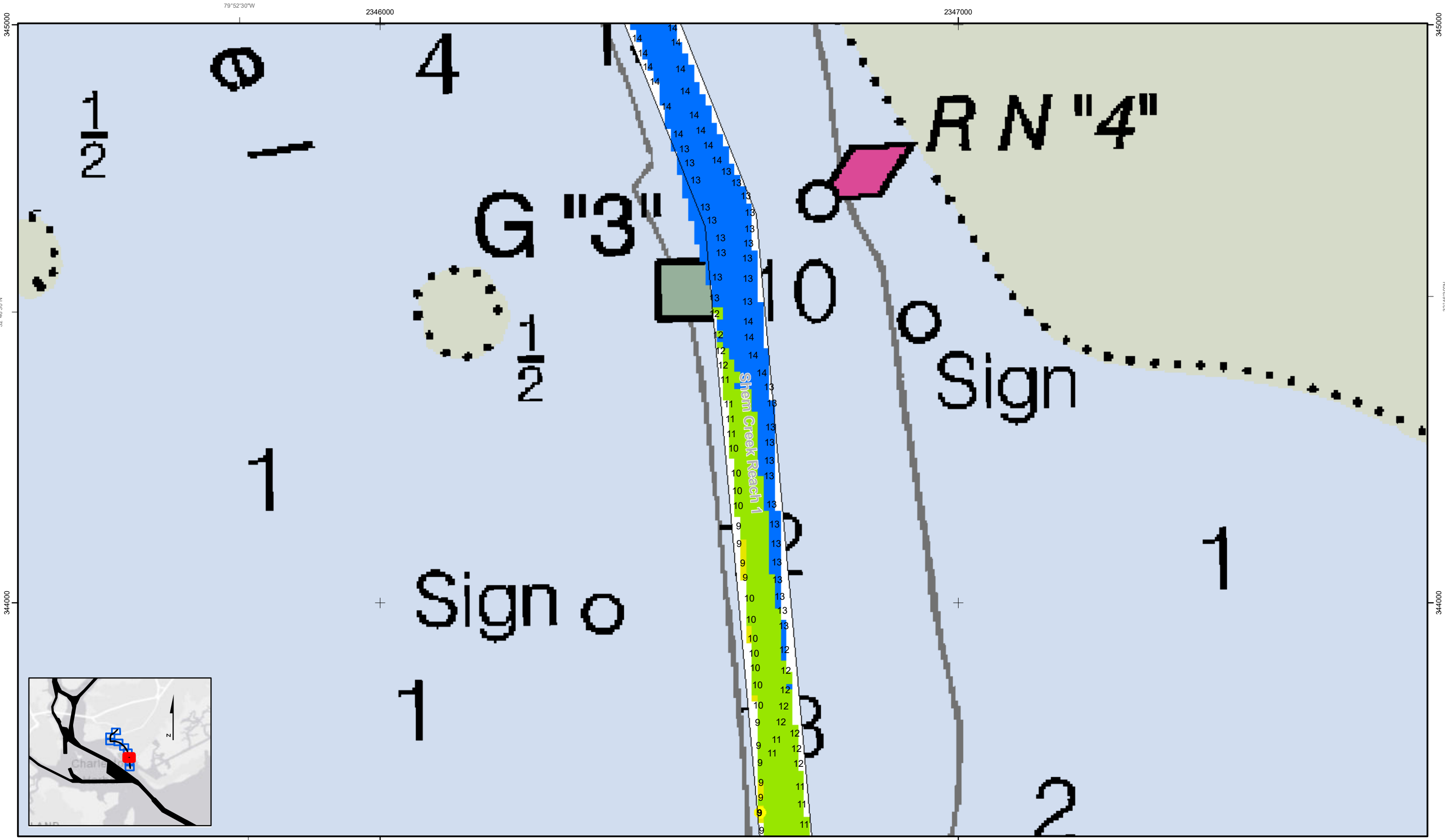
SHEET REFERENCE NUMBER <b>C002</b> Page 2 of 9	<b>Shem Creek</b> The information depicted on this map represents the results of surveys made on the dates indicated and can only be considered as indicating the general conditions existing at that time. Concluded on: <b>25 Jan 2019</b> Mount Pleasant, South Carolina	U.S. ARMY ENGINEER DISTRICT CORPS OF ENGINEERS CHARLESTON, SOUTH CAROLINA SPATIAL DATA BRANCH 69A HAGOOD AVE CHARLESTON, SC 29403 CESAC-GIS@USACE.ARMY.MIL	Designed By: <b>eHydro Software v3.82</b> Reviewed By: <b>CCW</b> Reference Scale: <b>1 inch = 150 feet</b> Projection: <b>NAD 1983 StatePlane South Carolina FIPS 3900 Feet</b>	Survey Date: <b>25 Jan 2019</b> Project Reference Number: <b>CESAC-PRA-0002</b> Survey Type: <b>Condition</b>	Production Date: <b>28 Jan 2019</b>
--	--	--	---	---	-------------------------------------

<b>Shoalest Sounding</b> ● Sounding <i>Sounding may cover several point areas and is calculated per reach quarter area</i> *+ indicates sounding above MLLW	<b>USCG Beacon</b> ■ Green ▲ Red □ White	<b>USCG Buoy</b> ● Green ● Red ● Coast Guard Racon	● White ● Yellow ● USCG Light	<b>Depth in feet</b> 0-3   3 to 6   6 to 9   9 to 12   Greater Than 12
--	---	---	-------------------------------------	---

Production Notes:  
 1. The information depicted on this product is for plotting purposes only.  
 2. Vector hydrographic data derived from surveys conducted by the USACE and approved partners.  
 3. Soundings are in feet and refer to Mean Lower Low Water (MLLW).  
 4. Raster Background: Pansharpened Worldview-2 imagery dated 2014.

In no event shall the U.S. Army Corps of Engineers, Charleston District Office, Spatial Data Branch be liable for direct, indirect, incidental, consequential or special damages of any kind, including, but not limited to, loss of anticipated profits or benefits arising out of use of or reliance on the data.  
 These data sets have been developed from the best available sources. Although efforts have been made to ensure that the datasets are accurate and reliable, errors and variable conditions originating from physical sources used to develop the data may be reflected in the data supplied.  
**This product is not intended to be used for navigation.**  
 Mariners are encouraged to use all prudent safety measures.

U.S. Army Corps of Engineers  
 Charleston District



SHEET  
REFERENCE  
NUMBER  
C002  
Page 3 of 9

**Shem Creek**  
The information depicted on this map represents the results of surveys made on the dates indicated and can only be considered as indicating the general conditions existing at that time.  
Concluded on: **25 Jan 2019**  
Mount Pleasant, South Carolina

U.S. ARMY ENGINEER DISTRICT  
CORPS OF ENGINEERS  
CHARLESTON, SOUTH CAROLINA  
SPATIAL DATA BRANCH  
69A HAGOOD AVE  
CHARLESTON, SC 29403  
CESAC-GIS@USACE.ARMY.MIL

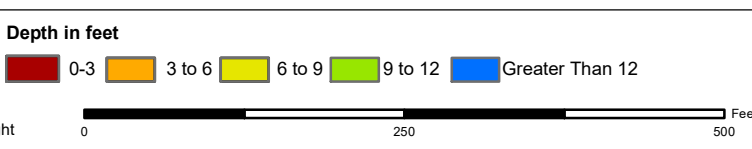
Designed By: <b>eHydro Software v3.82</b>	Survey Date: <b>25 Jan 2019</b>	Production Date: <b>28 Jan 2019</b>
Reviewed By: <b>CCW</b>	Absolute Scale: <b>1:1,800</b>	Project Reference Number: <b>CESAC-PRA-0002</b>
Reference Scale: <b>1 inch = 150 feet</b>	Survey Type: <b>Condition</b>	
Projection: <b>NAD 1983 StatePlane South Carolina FIPS 3900 Feet</b>		

**Shoalest Sounding**  
● Sounding  
Sounding may cover several point areas and is calculated per reach quarter area  
\*+ indicates sounding above MLLW

**USCG Beacon**  
■ Green  
▲ Red  
□ White

**USCG Buoy**  
● Green  
● Red  
● Coast Guard Racon

○ White  
○ Yellow  
○ USCG Light

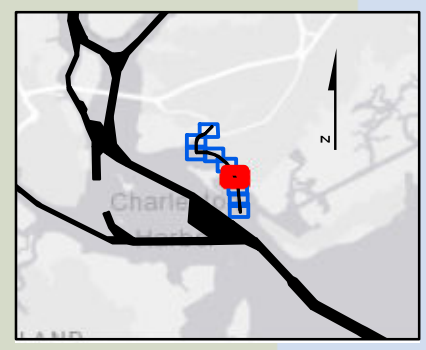
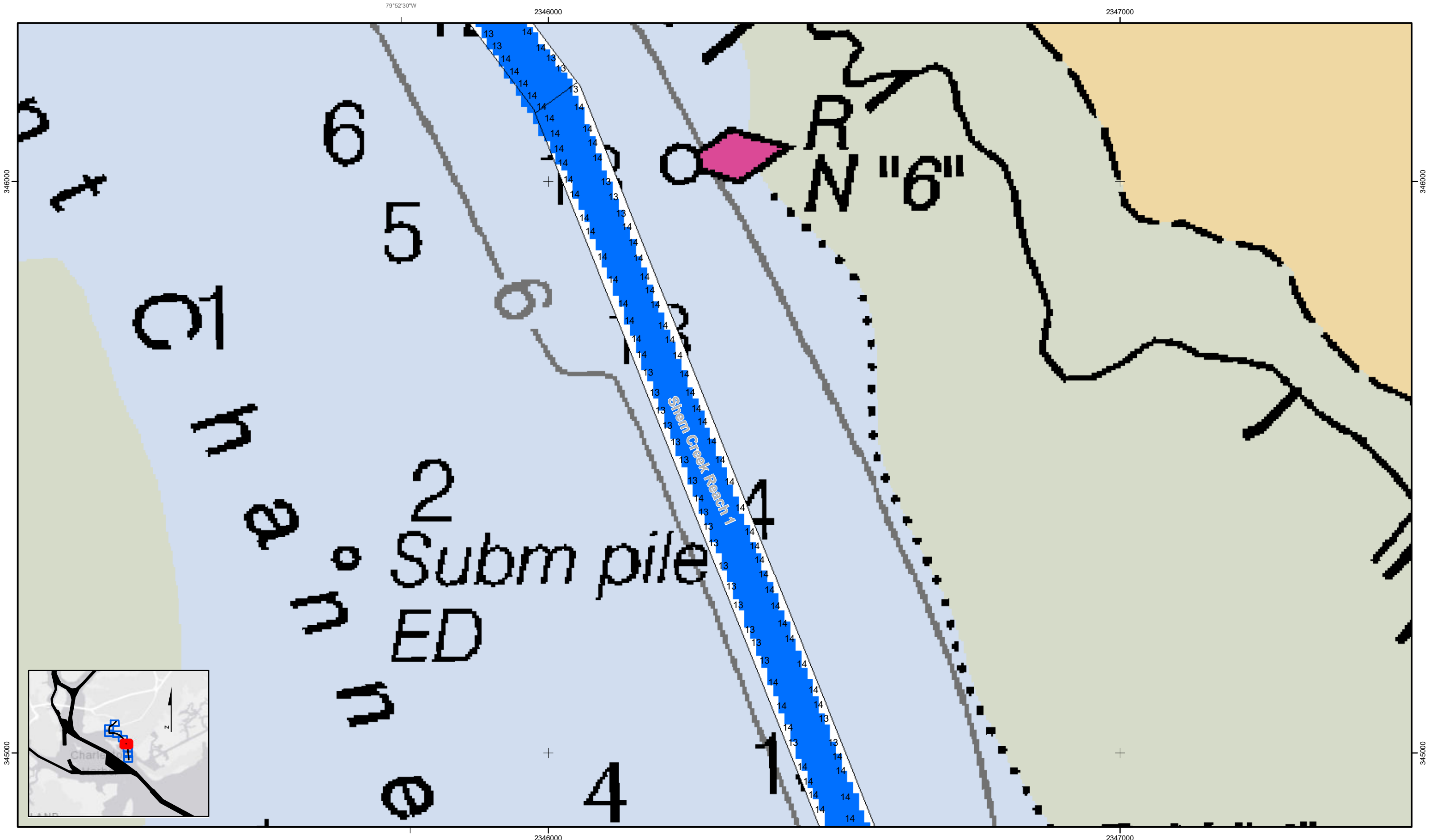


**Production Notes:**

- The information depicted on this product is for plotting purposes only.
- Vector hydrographic data derived from surveys conducted by the USACE and approved partners.
- Soundings are in feet and refer to Mean Lower Low Water (MLLW).
- Raster Background: Panshaped Worldview-2 imagery dated 2014.

In no event shall the U.S. Army Corps of Engineers, Charleston District Office, Spatial Data Branch be liable for direct, indirect, incidental, consequential or special damages of any kind, including, but not limited to, loss of anticipated profits or benefits arising out of use of or reliance on the data.  
These data sets have been developed from the best available sources. Although efforts have been made to ensure that the datasets are accurate and reliable, errors and variable conditions originating from physical sources used to develop the data may be reflected in the data supplied.  
This product is not intended to be used for navigation.  
Mariners are encouraged to use all prudent safety measures.





**Shem Creek**  
 The information depicted on this map represents the results of surveys made on the dates indicated and can only be considered as indicating the general conditions existing at that time.  
 Concluded on: 25 Jan 2019  
 Mount Pleasant, South Carolina

U.S. ARMY ENGINEER DISTRICT  
 CORPS OF ENGINEERS  
 CHARLESTON, SOUTH CAROLINA  
 SPATIAL DATA BRANCH  
 69A HAGOOD AVE  
 CHARLESTON, SC 29403  
 CESAC-GIS@USACE.ARMY.MIL

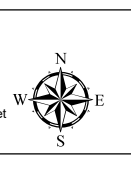
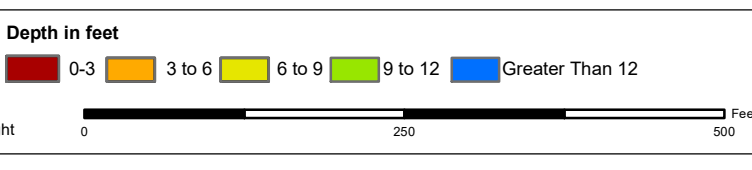
Designed By: <b>eHydro Software v3.82</b>	Survey Date: <b>25 Jan 2019</b>	Production Date: <b>28 Jan 2019</b>
Reviewed By: <b>CCW</b>	Absolute Scale: <b>1:1,800</b>	Project Reference Number: <b>CESAC-PRA-0002</b>
Reference Scale: <b>1 inch = 150 feet</b>	Survey Type: <b>Condition</b>	
Projection: <b>NAD 1983 StatePlane South Carolina FIPS 3900 Feet</b>		

**Shoalest Sounding**  
 ● Sounding  
*Sounding may cover several point areas and is calculated per reach quarter area*  
 \*+ indicates sounding above MLLW

**USCG Beacon**  
 ● Green  
 ● Red  
 ● White

**USCG Buoy**  
 ● Green  
 ● Red  
 ● Coast Guard Racon

○ White  
 ● Yellow  
 ● USCG Light



**Production Notes:**

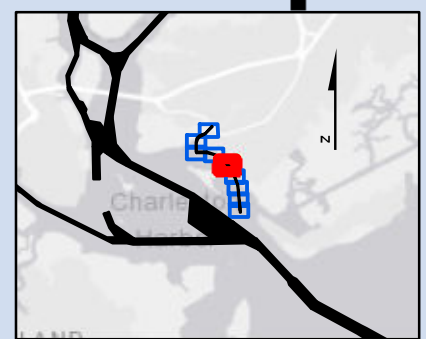
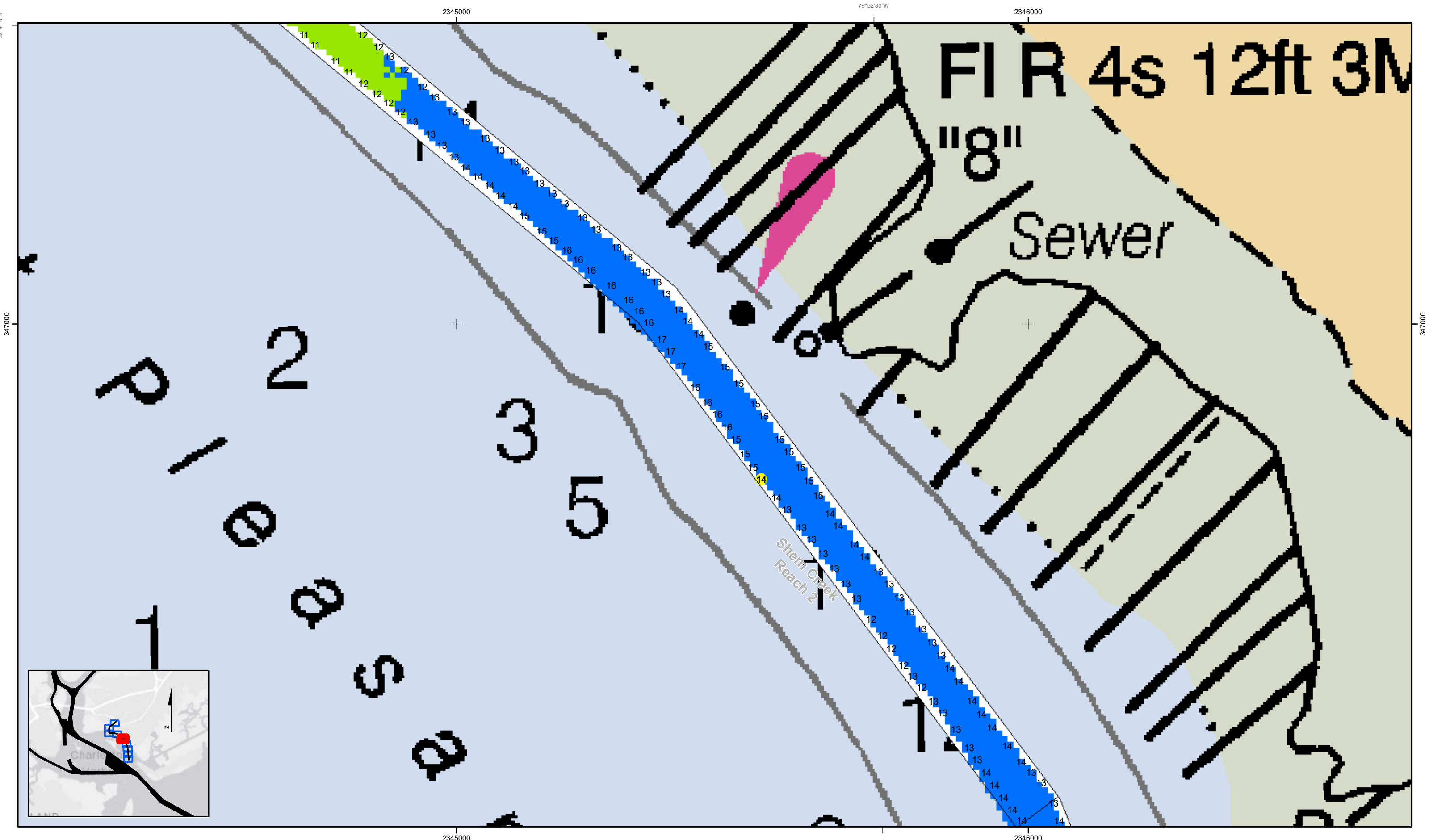
- The information depicted on this product is for plotting purposes only.
- Vector hydrographic data derived from surveys conducted by the USACE and approved partners.
- Soundings are in feet and refer to Mean Lower Low Water (MLLW).
- Raster Background: Pansharpened Worldview-2 imagery dated 2014.

In no event shall the U.S. Army Corps of Engineers, Charleston District Office, Spatial Data Branch be liable for direct, indirect, incidental, consequential or special damages of any kind, including, but not limited to, loss of anticipated profits or benefits arising out of use of or reliance on the data.

These data sets have been developed from the best available sources. Although efforts have been made to ensure that the datasets are accurate and reliable, errors and variable conditions originating from physical sources used to develop the data may be reflected in the data supplied.

This product is not intended to be used for navigation.  
 Mariners are encouraged to use all prudent safety measures.





SHEET REFERENCE NUMBER <b>C002</b> Page 5 of 9	<b>Shem Creek</b> The information depicted on this map represents the results of surveys made on the dates indicated and can only be considered as indicating the general conditions existing at that time. Concluded on: <b>25 Jan 2019</b> Mount Pleasant, South Carolina	U.S. ARMY ENGINEER DISTRICT CORPS OF ENGINEERS CHARLESTON, SOUTH CAROLINA SPATIAL DATA BRANCH 69A HAGOOD AVE CHARLESTON, SC 29403 CESAC-GIS@USACE.ARMY.MIL	Designed By: <b>eHydro Software v3.82</b> Reviewed By: <b>CCW</b> Reference Scale: <b>1 inch = 150 feet</b> Projection: <b>NAD 1983 StatePlane South Carolina FIPS 3900 Feet</b>	Survey Date: <b>25 Jan 2019</b> Project Reference Number: <b>CESAC-PRA-0002</b> Survey Type: <b>Condition</b>	Production Date: <b>28 Jan 2019</b>
--	--	--	---	---	-------------------------------------

<b>Shoalest Sounding</b> ● Sounding <i>Sounding may cover several point areas and is calculated per reach quarter area</i> *+ indicates sounding above MLLW	<b>USCG Beacon</b> ■ Green ▲ Red □ White *+ indicates sounding above MLLW	<b>USCG Buoy</b> ● Green ● Red ● Coast Guard Racon	● White ● Yellow ● USCG Light	<b>Depth in feet</b> 0-3 3 to 6 6 to 9 9 to 12 Greater Than 12
--	---	---	-------------------------------------	---

0 250 500 Feet

**Production Notes:**

- The information depicted on this product is for plotting purposes only.
- Vector hydrographic data derived from surveys conducted by the USACE and approved partners.
- Soundings are in feet and refer to Mean Lower Low Water (MLLW).
- Raster Background: Panshaped Worldview-2 imagery dated 2014.

In no event shall the U.S. Army Corps of Engineers, Charleston District Office, Spatial Data Branch be liable for direct, indirect, incidental, consequential or special damages of any kind, including, but not limited to, loss of anticipated profits or benefits arising out of use of or reliance on the data.

These data sets have been developed from the best available sources. Although efforts have been made to ensure that the datasets are accurate and reliable, errors and variable conditions originating from physical sources used to develop the data may be reflected in the data supplied.

This product is not intended to be used for navigation. Mariners are encouraged to use all prudent safety measures.

U.S. Army Corps of Engineers  
Charleston District

2343000

79°53'0"W

2344000

2345000

348000

348000

32°47'0"N

32°47'0"N

2343000

79°53'0"W

2344000

2345000

12ft

R "14"

R

"12"

R "10"

Shem Creek Reach 4

Shem Creek Reach 3

Shem Creek Reach 2

MAY 2015

2

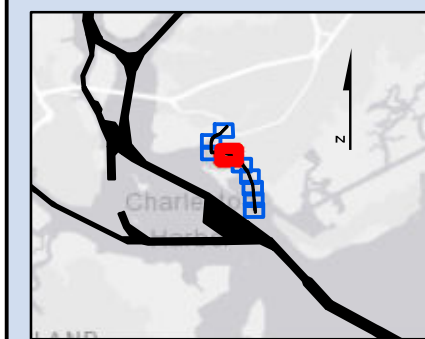
3

2

M

4

U



SHEET REFERENCE NUMBER <b>C002</b> Page 6 of 9	<b>Shem Creek</b> The information depicted on this map represents the results of surveys made on the dates indicated and can only be considered as indicating the general conditions existing at that time. Concluded on: <b>25 Jan 2019</b> Mount Pleasant, South Carolina	U.S. ARMY ENGINEER DISTRICT CORPS OF ENGINEERS CHARLESTON, SOUTH CAROLINA  SPATIAL DATA BRANCH 69A HAGOOD AVE CHARLESTON, SC 29403 CESAC-GIS@USACE.ARMY.MIL	Designed By: <b>eHydro Software v3.82</b> Reviewed By: <b>CCW</b> Reference Scale: <b>1 inch = 150 feet</b> Projection: <b>NAD 1983 StatePlane South Carolina FIPS 3900 Feet</b>	Survey Date: <b>25 Jan 2019</b> Project Reference Number: <b>CESAC-PRA-0002</b> Survey Type: <b>Condition</b>	Production Date: <b>28 Jan 2019</b>
--	--	--	---	---	-------------------------------------

<b>Shoalest Sounding</b> Sounding Sounding may cover several point areas and is calculated per reach quarter area "+ " indicates sounding above MLLW	<b>USCG Beacon</b> Green Red White	<b>USCG Buoy</b> Green Red Coast Guard Racon	White Yellow USCG Light	<b>Depth in feet</b> 0-3 3 to 6 6 to 9 9 to 12 Greater Than 12
---	---	---	-------------------------------	---

**Production Notes:**

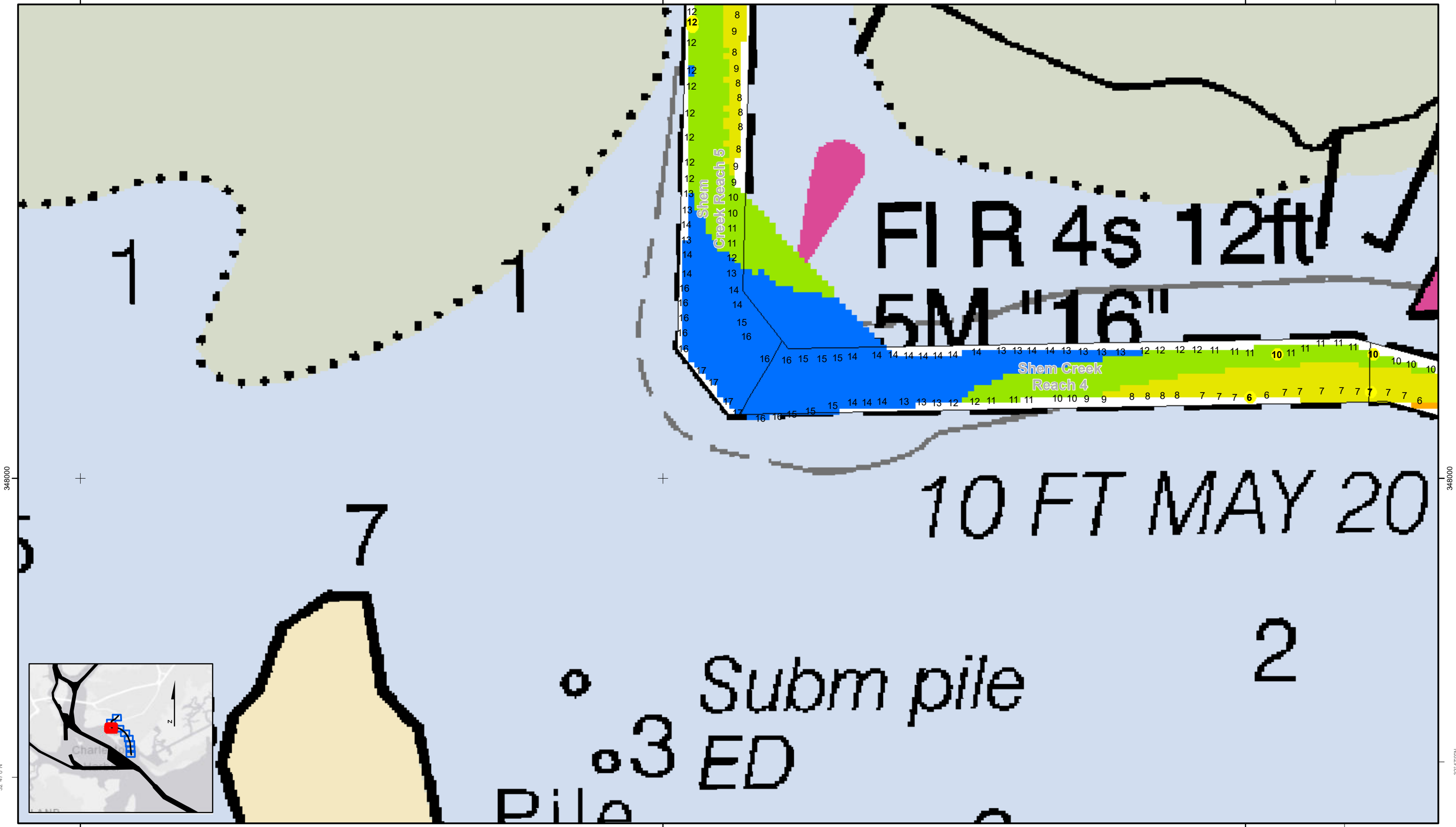
- The information depicted on this product is for plotting purposes only.
- Vector hydrographic data derived from surveys conducted by the USACE and approved partners.
- Soundings are in feet and refer to Mean Lower Low Water (MLLW).
- Raster Background: Pansharpened Worldview-2 imagery dated 2014.

In no event shall the U.S. Army Corps of Engineers, Charleston District Office, Spatial Data Branch be liable for direct, indirect, incidental, consequential or special damages of any kind, including, but not limited to, loss of anticipated profits or benefits arising out of use of or reliance on the data.

These data sets have been developed from the best available sources. Although efforts have been made to ensure that the datasets are accurate and reliable, errors and variable conditions originating from physical sources used to develop the data may be reflected in the data supplied.

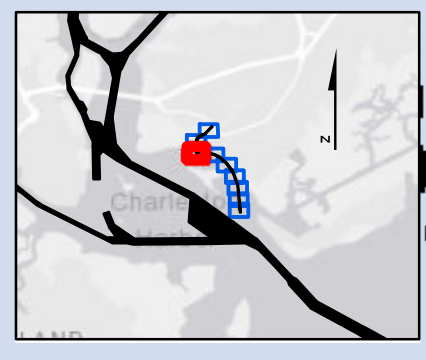
This product is not intended to be used for navigation. Mariners are encouraged to use all prudent safety measures.

U.S. Army Corps of Engineers  
Charleston District



348000  
32°47'0"N

348000  
32°47'0"N



**Shem Creek**  
The information depicted on this map represents the results of surveys made on the dates indicated and can only be considered as indicating the general conditions existing at that time.  
Concluded on: **25 Jan 2019**  
Mount Pleasant, South Carolina

U.S. ARMY ENGINEER DISTRICT CORPS OF ENGINEERS CHARLESTON, SOUTH CAROLINA	Designed By: <b>eHydro Software v3.82</b>	Survey Date: <b>25 Jan 2019</b>	Production Date: <b>28 Jan 2019</b>
SPATIAL DATA BRANCH 69A HAGOOD AVE CHARLESTON, SC 29403 CESAC-GIS@USACE.ARMY.MIL	Reviewed By: <b>CCW</b>	Absolute Scale: <b>1:1,800</b>	Project Reference Number: <b>CESAC-PRA-0002</b>
	Reference Scale: <b>1 inch = 150 feet</b>	Survey Type: <b>Condition</b>	
	Projection: <b>NAD 1983 StatePlane South Carolina FIPS 3900 Feet</b>		

**Shoalest Sounding**  
● Sounding  
Sounding may cover several point areas and is calculated per reach quarter area  
\*+ indicates sounding above MLLW

**USCG Beacon**  
■ Green  
▲ Red  
□ White

**USCG Buoy**  
● Green  
● Red  
● Coast Guard Racon

○ White  
○ Yellow  
○ USCG Light

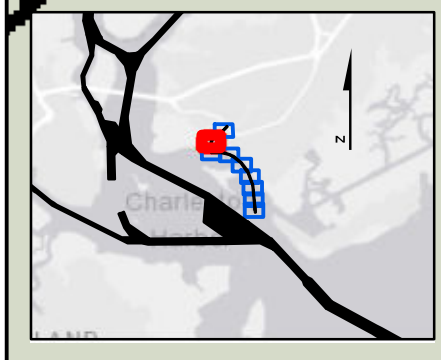
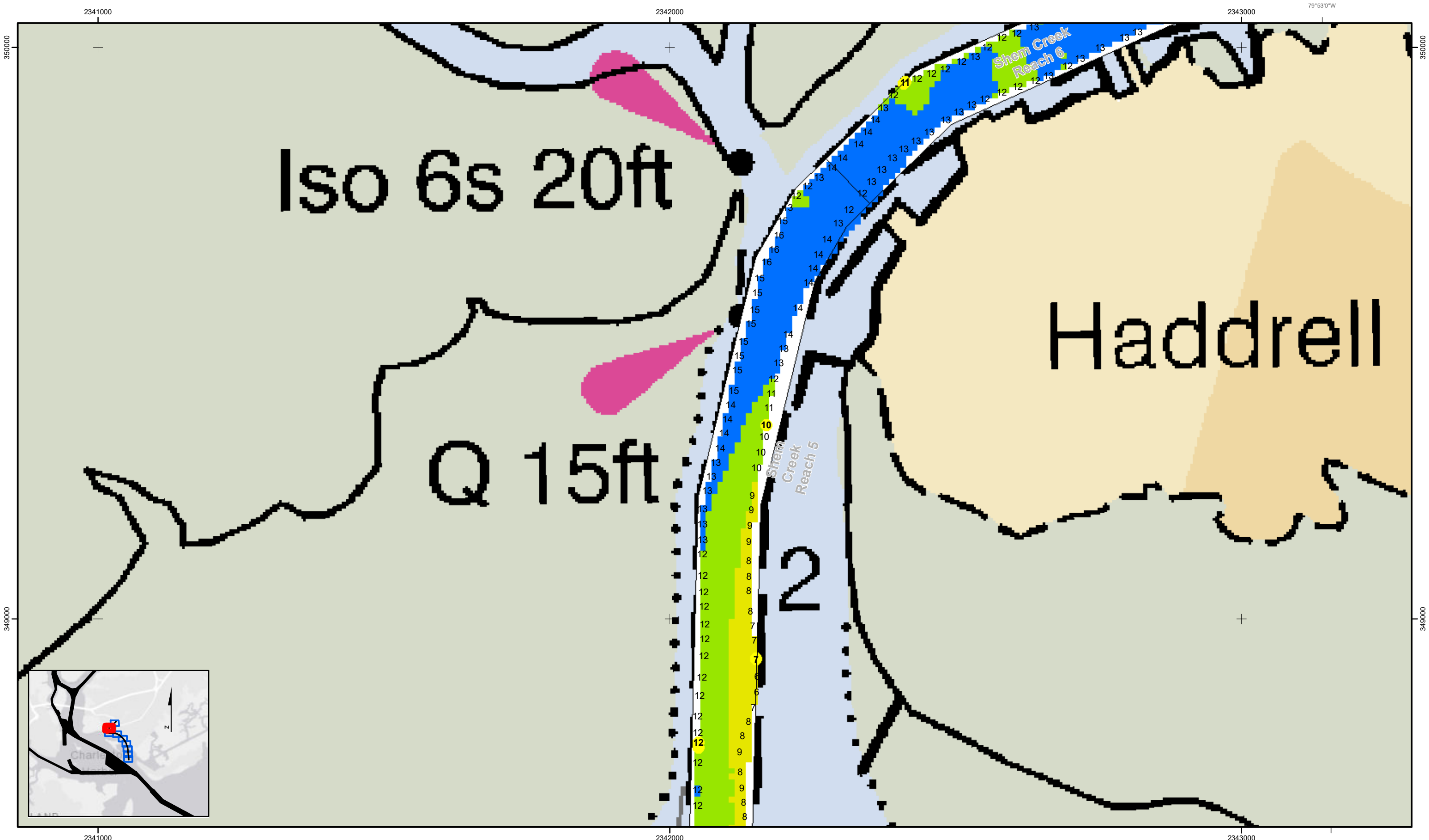
**Depth in feet**  
■ 0-3 ■ 3 to 6 ■ 6 to 9 ■ 9 to 12 ■ Greater Than 12

0 250 500 Feet

**Production Notes:**  
1. The information depicted on this product is for plotting purposes only.  
2. Vector hydrographic data derived from surveys conducted by the USACE and approved partners.  
3. Soundings are in feet and refer to Mean Lower Low Water (MLLW).  
4. Raster Background: Pansharpened Worldview-2 imagery dated 2014.

In no event shall the U.S. Army Corps of Engineers, Charleston District Office, Spatial Data Branch be liable for direct, indirect, incidental, consequential or special damages of any kind, including, but not limited to, loss of anticipated profits or benefits arising out of use of or reliance on the data.  
These data sets have been developed from the best available sources. Although efforts have been made to ensure that the datasets are accurate and reliable, errors and variable conditions originating from physical sources used to develop the data may be reflected in the data supplied.  
This product is not intended to be used for navigation.  
Mariners are encouraged to use all prudent safety measures.





**Shem Creek**  
 The information depicted on this map represents the results of surveys made on the dates indicated and can only be considered as indicating the general conditions existing at that time.  
 Concluded on: 25 Jan 2019  
 Mount Pleasant, South Carolina

U.S. ARMY ENGINEER DISTRICT CORPS OF ENGINEERS CHARLESTON, SOUTH CAROLINA	Designed By: <b>eHydro Software v3.82</b>	Survey Date: <b>25 Jan 2019</b>	Production Date: <b>28 Jan 2019</b>
SPATIAL DATA BRANCH 69A HAGOOD AVE CHARLESTON, SC 29403 CESAC-GIS@USACE.ARMY.MIL	Reviewed By: <b>CCW</b>	Absolute Scale: <b>1:1,800</b>	Project Reference Number: <b>CESAC-PRA-0002</b>
	Reference Scale: <b>1 inch = 150 feet</b>	Survey Type: <b>Condition</b>	
	Projection: <b>NAD 1983 StatePlane South Carolina FIPS 3900 Feet</b>		

**Shoalest Sounding**  
 ● Sounding  
*Sounding may cover several point areas and is calculated per reach quarter area*  
 \*+ indicates sounding above MLLW

**USCG Beacon**  
 ■ Green  
 ▲ Red  
 □ White

**USCG Buoy**  
 ● Green  
 ● Red  
 ● Coast Guard Racon

○ White  
 ○ Yellow  
 ○ USCG Light

**Depth in feet**

0-3	3 to 6	6 to 9	9 to 12	Greater Than 12
-----	--------	--------	---------	-----------------

0 250 500 Feet

**Production Notes:**

- The information depicted on this product is for plotting purposes only.
- Vector hydrographic data derived from surveys conducted by the USACE and approved partners.
- Soundings are in feet and refer to Mean Lower Low Water (MLLW).
- Raster Background: Pansharpened Worldview-2 imagery dated 2014.

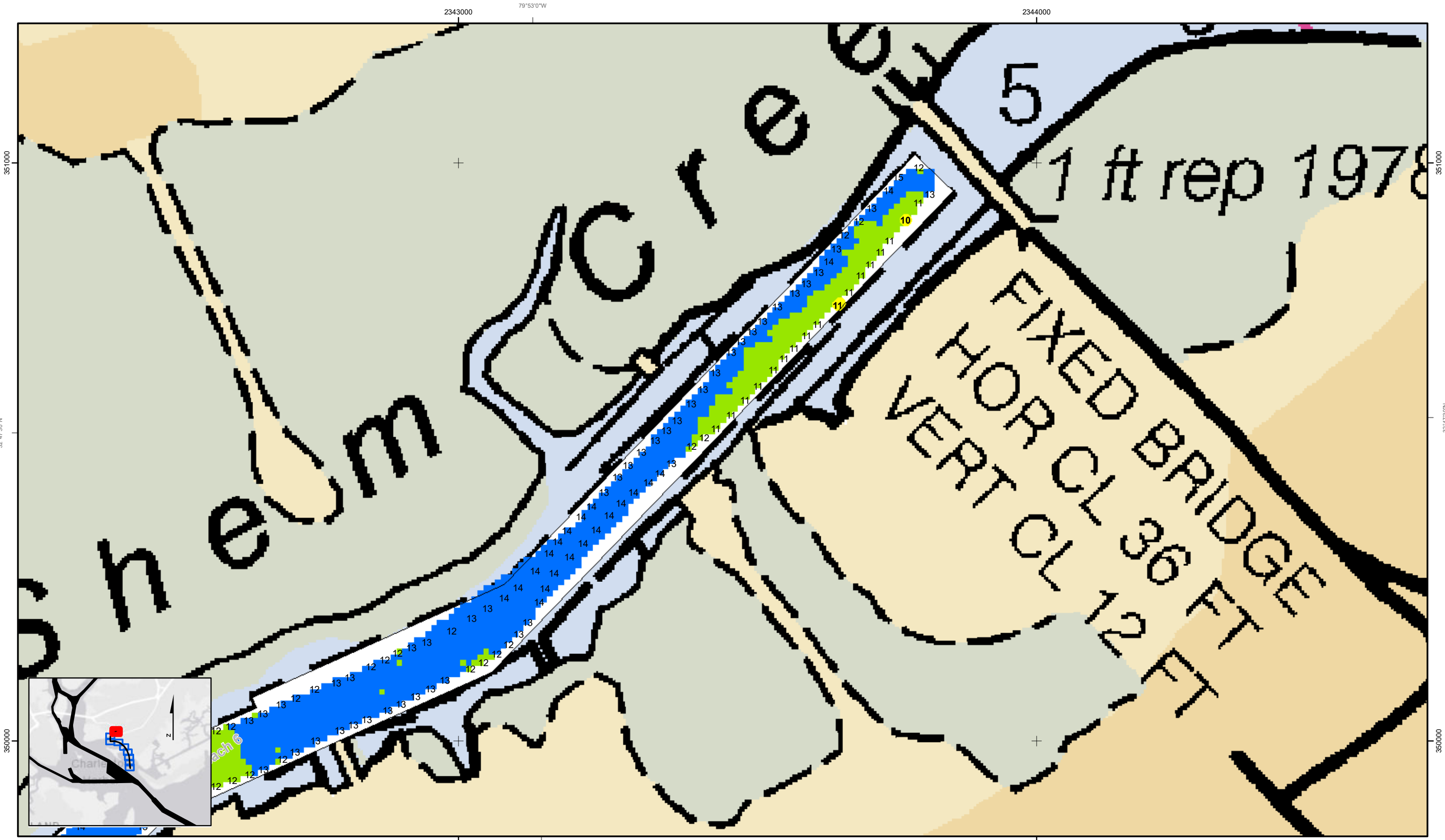
In no event shall the U.S. Army Corps of Engineers, Charleston District Office, Spatial Data Branch be liable for direct, indirect, incidental, consequential or special damages of any kind, including, but not limited to, loss of anticipated profits or benefits arising out of use of or reliance on the data.

These data sets have been developed from the best available sources. Although efforts have been made to ensure that the datasets are accurate and reliable, errors and variable conditions originating from physical sources used to develop the data may be reflected in the data supplied.

This product is not intended to be used for navigation. Mariners are encouraged to use all prudent safety measures.







351000  
350000  
32°47'30"N  
32°47'30"N



**Shem Creek**  
The information depicted on this map represents the results of surveys made on the dates indicated and can only be considered as indicating the general conditions existing at that time.  
Concluded on: **25 Jan 2019**  
Mount Pleasant, South Carolina

U.S. ARMY ENGINEER DISTRICT CORPS OF ENGINEERS CHARLESTON, SOUTH CAROLINA	Designed By: <b>eHydro Software v3.82</b>	Survey Date: <b>25 Jan 2019</b>	Production Date: <b>28 Jan 2019</b>
Reviewed By: <b>CCW</b>	Absolute Scale: <b>1:1,800</b>	Project Reference Number: <b>CESAC-PRA-0002</b>	
SPATIAL DATA BRANCH 69A HAGOOD AVE CHARLESTON, SC 29403	Reference Scale: <b>1 inch = 150 feet</b>	Survey Type: <b>Condition</b>	
CESAC-GIS@USACE.ARMY.MIL	Projection: <b>NAD 1983 StatePlane South Carolina FIPS 3900 Feet</b>		

**Shoalest Sounding**  
Sounding may cover several point areas and is calculated per reach quarter area  
\*+ indicates sounding above MLLW

**USCG Beacon**  
Green  
Red  
White

**USCG Buoy**  
Green  
Red  
Coast Guard Racon

**White**  
Yellow  
USCG Light

**Depth in feet**

0-3    3 to 6    6 to 9    9 to 12    Greater Than 12

0    250    500    Feet

**Production Notes:**

- The information depicted on this product is for plotting purposes only.
- Vector hydrographic data derived from surveys conducted by the USACE and approved partners.
- Soundings are in feet and refer to Mean Lower Low Water (MLLW).
- Raster Background: Pansharpened Worldview-2 imagery dated 2014.

In no event shall the U.S. Army Corps of Engineers, Charleston District Office, Spatial Data Branch be liable for direct, indirect, incidental, consequential or special damages of any kind, including, but not limited to, loss of anticipated profits or benefits arising out of use of or reliance on the data.

These data sets have been developed from the best available sources. Although efforts have been made to ensure that the datasets are accurate and reliable, errors and variable conditions originating from physical sources used to develop the data may be reflected in the data supplied.

This product is not intended to be used for navigation.  
Mariners are encouraged to use all prudent safety measures.



SHEET REFERENCE NUMBER  
C002  
Page 9 of 9