

342000

342000

32°46'00"N

32°46'00"N

**Shem Creek**  
 The information depicted on this map represents the results of surveys made on the dates indicated and can only be considered as indicating the general conditions existing at that time.  
 Concluded on: **13 MAY 2020**  
 Mount Pleasant, South Carolina

U.S. ARMY ENGINEER DISTRICT  
 CORPS OF ENGINEERS  
 CHARLESTON, SOUTH CAROLINA  
 SPATIAL DATA BRANCH  
 69A HAGOOD AVE.  
 CHARLESTON, SC 29403  
 CESAC-GIS@USACE.ARMY.MIL

Designed By: <b>eHydro Software v3.82</b>	Survey Date: <b>13 MAY 2020</b>	Production Date: <b>14 MAY 2020</b>
Reviewed By: <b>CCW</b>	Absolute Scale: <b>1:1,800</b>	Project Reference Number: <b>CESAC-PRA-0002</b>
Reference Scale: <b>1 inch = 150 feet</b>	Survey Type: <b>CONDITION</b>	
Projection: <b>NAD 1983 StatePlane South Carolina FIPS 3900 Feet</b>		

**Shoalest Sounding**  
 Sounding may cover several point areas and is calculated per reach quarter area  
 "+" indicates sounding above MLLW

**USCG Beacon**  
 Green  
 White

**USCG Buoy**  
 Green  
 Red  
 Coast Guard Racon

**White**  
 Yellow  
 USCG Light

**Depth in feet**

0-3	3 to 6	6 to 9	9 to 12	Greater Than 12
-----	--------	--------	---------	-----------------

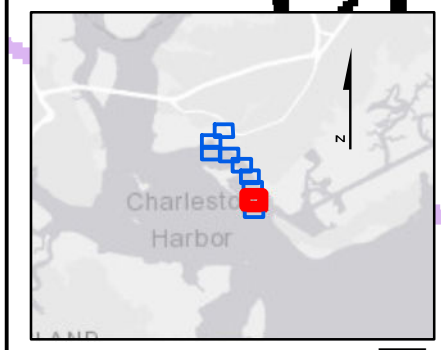
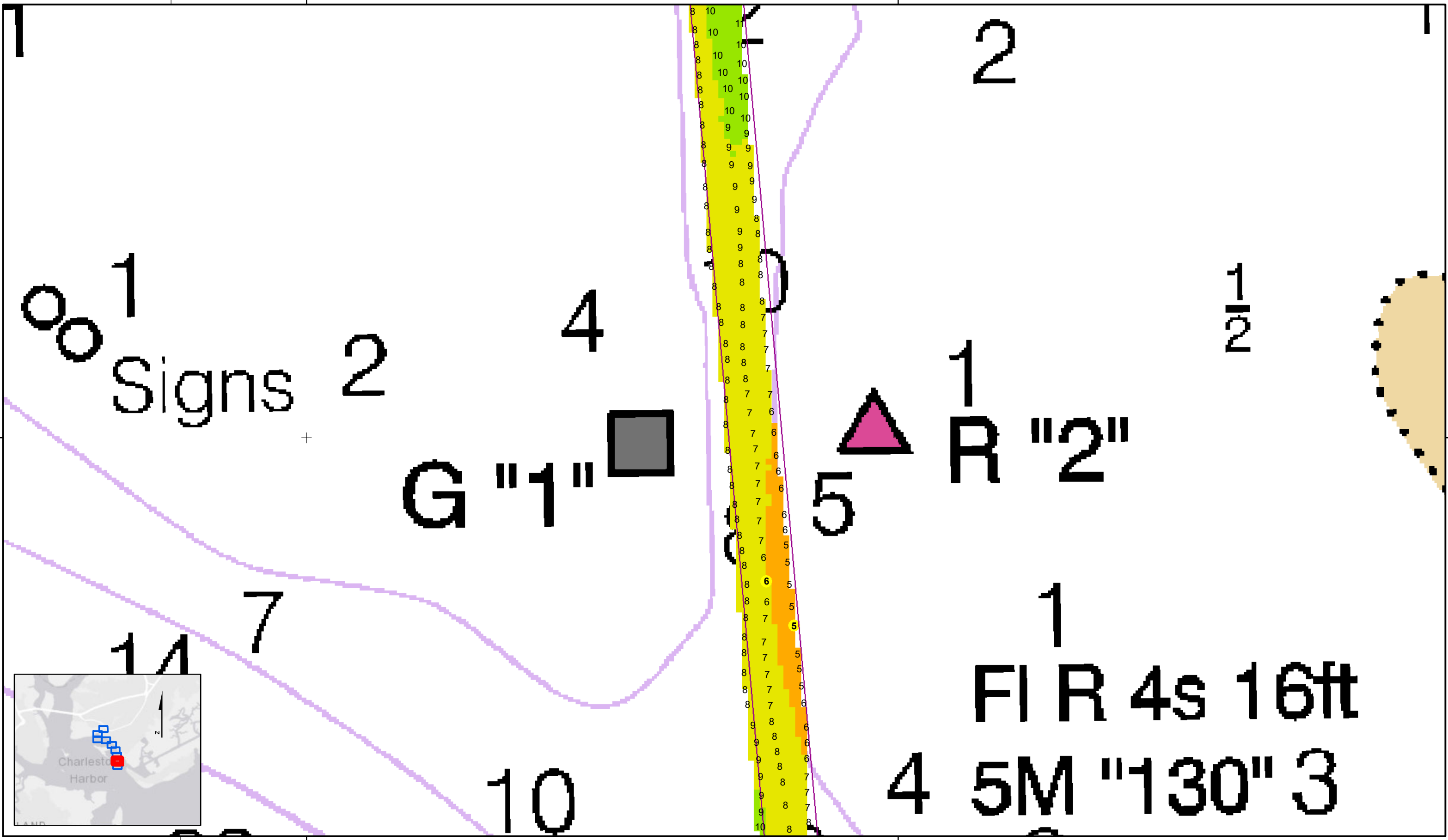
0 250 500 Feet



**Production Notes:**  
 1. The information depicted on this product is for plotting purposes only  
 2. Vector hydrographic data derived from surveys conducted by the USACE and approved partners  
 3. Soundings are in feet and refer to Mean Lower Low Water (MLLW)  
 4. Raster Background: Panharperned Worldview-2 imagery dated 2014

In no event shall the U.S. Army Corps of Engineers, Charleston District Office, Spatial Data Branch be liable for direct, indirect, incidental, consequential or special damages of any kind, including, but not limited to, loss of anticipated profits or benefits arising out of use of or reliance on the data.  
 These data sets have been developed from the best available sources. Although efforts have been made to ensure that the datasets are accurate and reliable, errors and variable conditions originating from physical sources used to develop the data may be reflected in the data supplied.  
 This product is not intended to be used for navigation.  
 Mariners are encouraged to use all prudent safety measures.





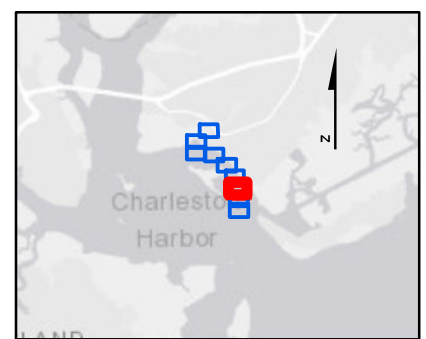
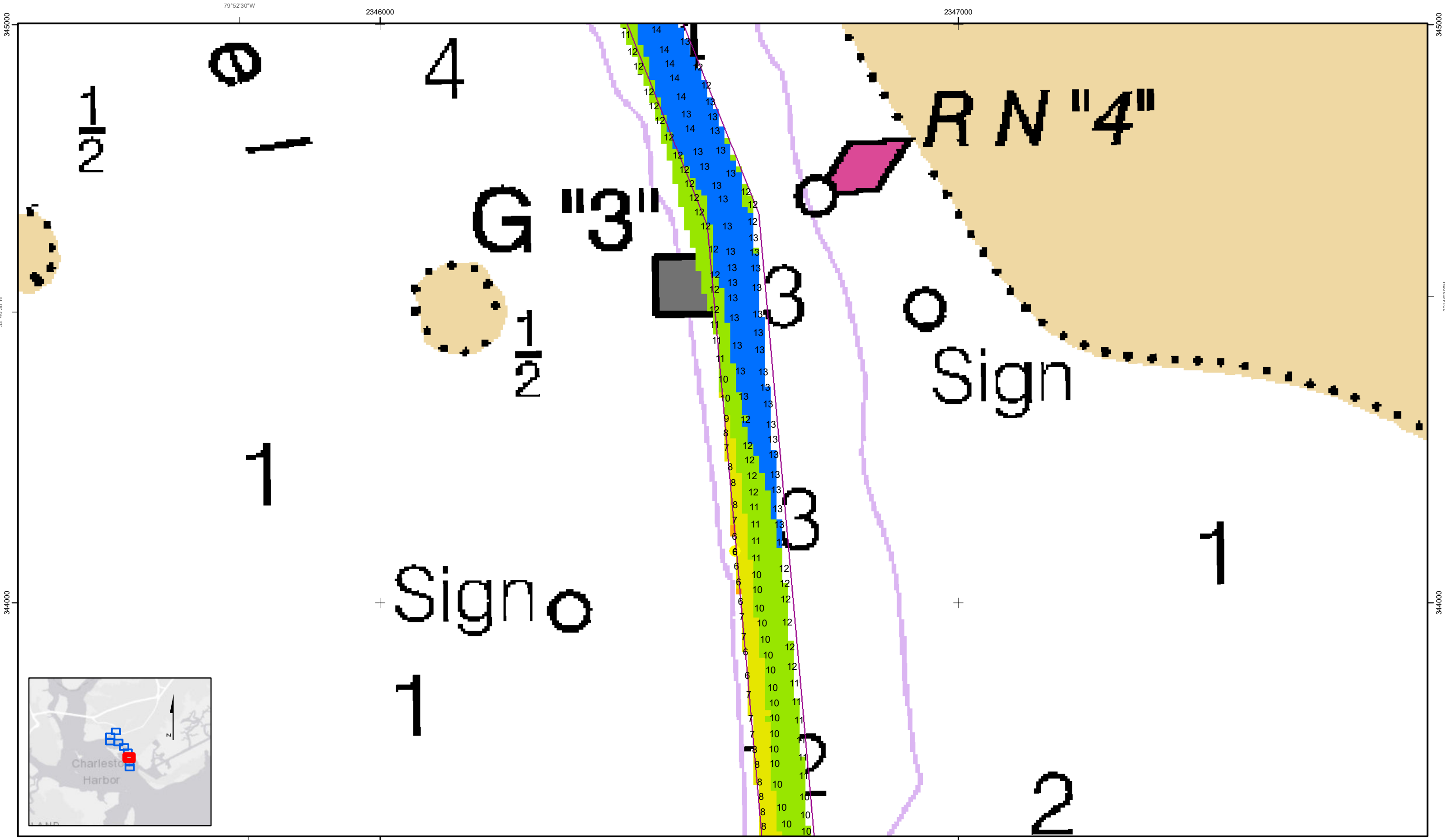
SHEET REFERENCE NUMBER <b>C002</b> Page 2 of 9	<b>Shem Creek</b> The information depicted on this map represents the results of surveys made on the dates indicated and can only be considered as indicating the general conditions existing at that time. Concluded on: <b>13 MAY 2020</b> Mount Pleasant, South Carolina	U.S. ARMY ENGINEER DISTRICT CORPS OF ENGINEERS CHARLESTON, SOUTH CAROLINA  SPATIAL DATA BRANCH 69A HAGOOD AVE CHARLESTON, SC 29403 CESAC-GIS@USACE.ARMY.MIL	Designed By: <b>eHydro Software v3.82</b> Reviewed By: <b>CCW</b> Reference Scale: <b>1 inch = 150 feet</b> Projection: <b>NAD 1983 StatePlane South Carolina FIPS 3900 Feet</b>	Survey Date: <b>13 MAY 2020</b> Project Reference Number: <b>CESAC-PRA-0002</b> Survey Type: <b>CONDITION</b>	Production Date: <b>14 MAY 2020</b>
--	--	--	---	--	--

<b>Shoalest Sounding</b> ● Sounding <i>Sounding may cover several point areas and is calculated per reach quarter area</i> *+ indicates sounding above MLLW	<b>USCG Beacon</b> ■ Green ▲ Red □ White	<b>USCG Buoy</b> ● Green ● Red ● Coast Guard Racon	● White ● Yellow ● USCG Light	<b>Depth in feet</b> 0-3   3 to 6   6 to 9   9 to 12   Greater Than 12
--	---	---	-------------------------------------	---

Production Notes:  
 1. The information depicted on this product is for plotting purposes only.  
 2. Vector hydrographic data derived from surveys conducted by the USACE and approved partners.  
 3. Soundings are in feet and refer to Mean Lower Low Water (MLLW).  
 4. Raster Background: Panosarpaned Worldview-2 imagery dated 2014.

In no event shall the U.S. Army Corps of Engineers, Charleston District Office, Spatial Data Branch be liable for direct, indirect, incidental, consequential or special damages of any kind, including, but not limited to, loss of anticipated profits or benefits arising out of use of or reliance on the data.  
 These data sets have been developed from the best available sources. Although efforts have been made to ensure that the database are accurate and reliable, errors and variable conditions originating from physical sources used to develop the data may be reflected in the data supplied.  
**This product is not intended to be used for navigation. Mariners are encouraged to use all prudent safety measures.**





SHEET REFERENCE NUMBER  
C002  
Page 3 of 9

**Shem Creek**  
The information depicted on this map represents the results of surveys made on the dates indicated and can only be considered as indicating the general conditions existing at that time.  
Concluded on: **13 MAY 2020**  
Mount Pleasant, South Carolina

U.S. ARMY ENGINEER DISTRICT  
CORPS OF ENGINEERS  
CHARLESTON, SOUTH CAROLINA  
SPATIAL DATA BRANCH  
69A HAGOOD AVE  
CHARLESTON, SC 29403  
CESAC-GIS@USACE.ARMY.MIL

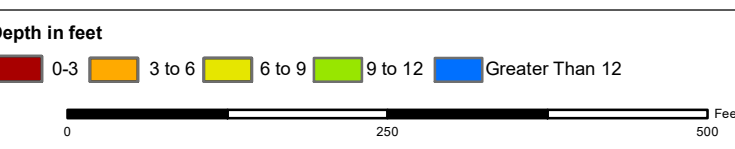
Designed By: <b>eHydro Software v3.82</b>	Survey Date: <b>13 MAY 2020</b>	Production Date: <b>14 MAY 2020</b>
Reviewed By: <b>CCW</b>	Absolute Scale: <b>1:1,800</b>	Project Reference Number: <b>CESAC-PRA-0002</b>
Reference Scale: <b>1 inch = 150 feet</b>	Survey Type: <b>CONDITION</b>	
Projection: <b>NAD 1983 StatePlane South Carolina FIPS 3900 Feet</b>		

**Shoalest Sounding**  
● Sounding  
*Sounding may cover several point areas and is calculated per reach quarter area*  
\*+ indicates sounding above MLLW

**USCG Beacon**  
■ Green  
▲ Red  
□ White

**USCG Buoy**  
● Green  
● Red  
● Coast Guard Racon

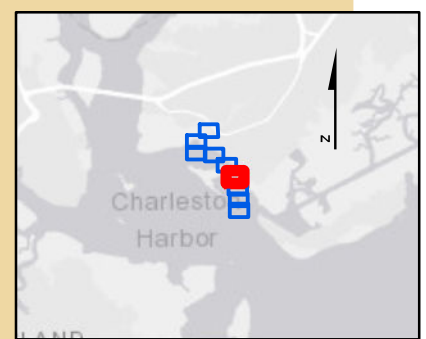
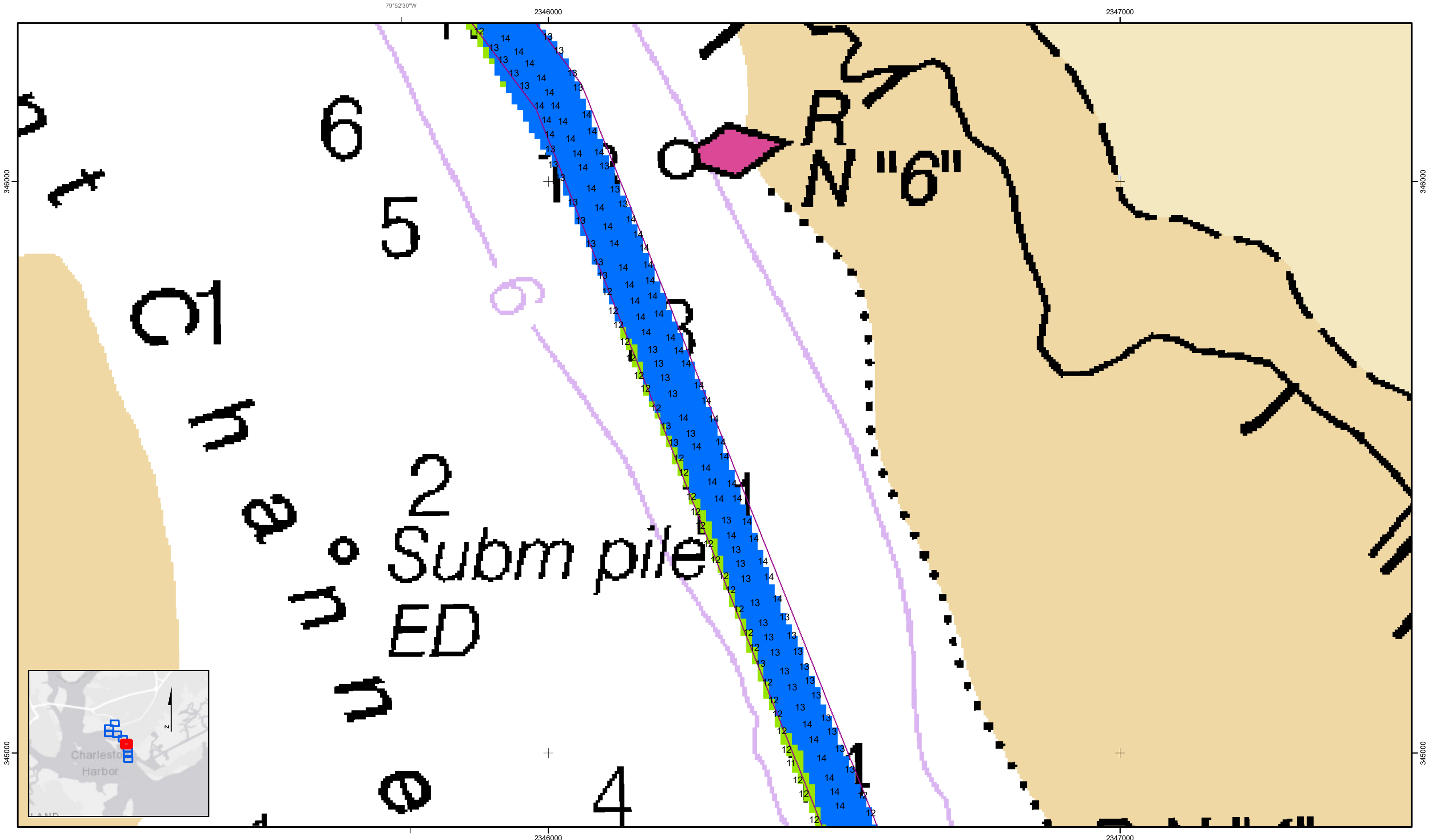
○ White  
○ Yellow  
○ USCG Light



**Production Notes:**  
1. The information depicted on this product is for plotting purposes only.  
2. Vector hydrographic data derived from surveys conducted by the USACE and approved partners.  
3. Soundings are in feet and refer to Mean Lower Low Water (MLLW).  
4. Raster Background: Panaharpened Worldview-2 imagery dated 2014.

In no event shall the U.S. Army Corps of Engineers, Charleston District Office, Spatial Data Branch be liable for direct, indirect, incidental, consequential or special damages of any kind, including, but not limited to, loss of anticipated profits or benefits arising out of use of or reliance on the data.  
These data sets have been developed from the best available sources. Although efforts have been made to ensure that the datasets are accurate and reliable, errors and variable conditions originating from physical sources used to develop the data may be reflected in the data supplied.  
**This product is not intended to be used for navigation.**  
Mariners are encouraged to use all prudent safety measures.





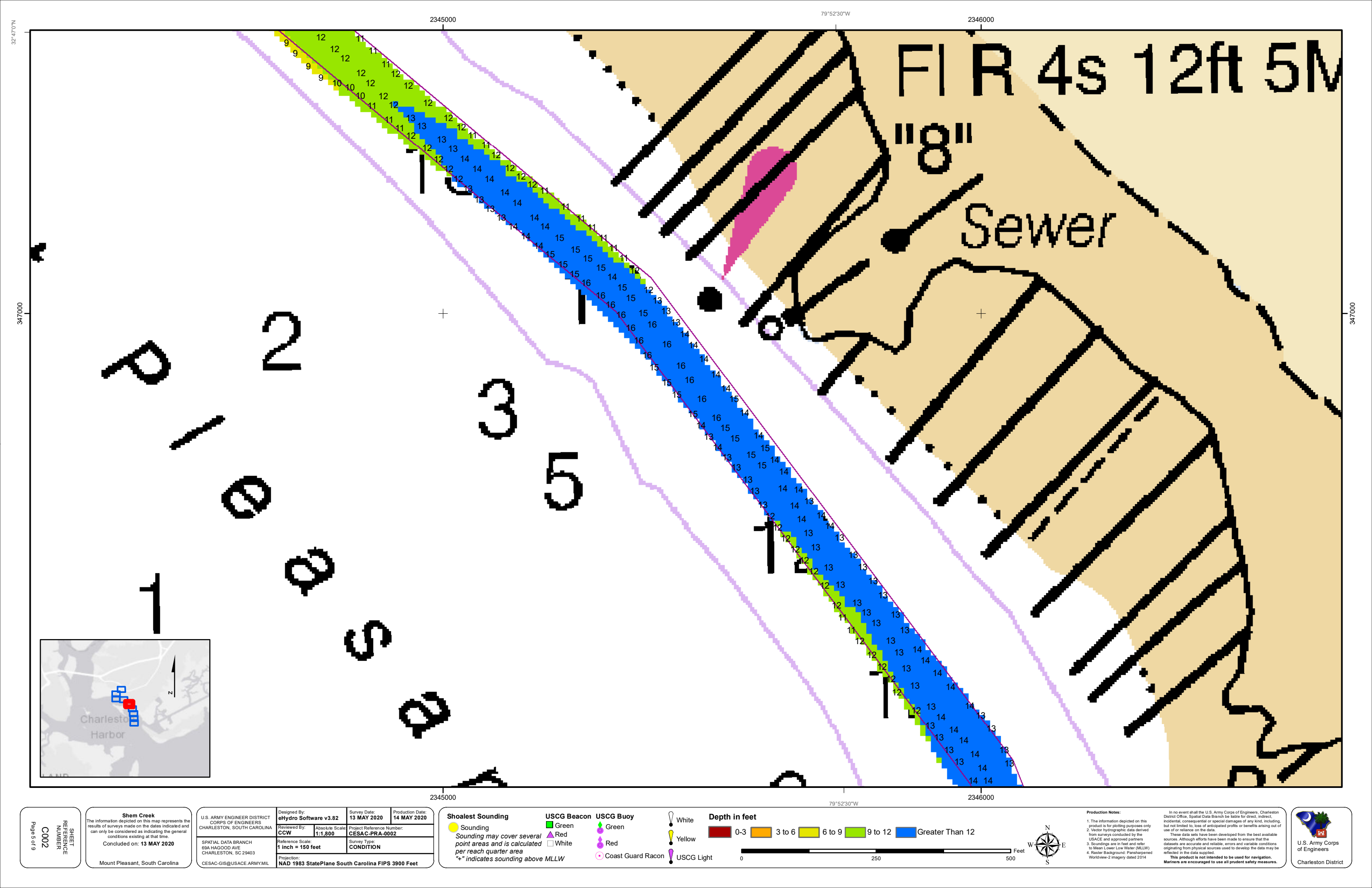
SHEET REFERENCE NUMBER <b>C002</b> Page 4 of 9	<b>Shem Creek</b> The information depicted on this map represents the results of surveys made on the dates indicated and can only be considered as indicating the general conditions existing at that time. Concluded on: <b>13 MAY 2020</b> Mount Pleasant, South Carolina	U.S. ARMY ENGINEER DISTRICT CORPS OF ENGINEERS CHARLESTON, SOUTH CAROLINA  SPATIAL DATA BRANCH 69A HAGOOD AVE. CHARLESTON, SC 29403 CESAC-GIS@USACE.ARMY.MIL	Designed By: <b>eHydro Software v3.82</b> Reviewed By: <b>CCW</b> Reference Scale: <b>1 inch = 150 feet</b> Projection: <b>NAD 1983 StatePlane South Carolina FIPS 3900 Feet</b>	Survey Date: <b>13 MAY 2020</b> Production Date: <b>14 MAY 2020</b> Project Reference Number: <b>CESAC-PRA-0002</b> Survey Type: <b>CONDITION</b>
--	--	---	---	--

<b>Shoalest Sounding</b> ● Sounding <i>Sounding may cover several point areas and is calculated per reach quarter area</i> *+ indicates sounding above MLLW	<b>USCG Beacon</b> ■ Green ▲ Red □ White	<b>USCG Buoy</b> ● Green ● Red ● Coast Guard Racon	White Yellow USCG Light	<b>Depth in feet</b> 0-3    3 to 6    6 to 9    9 to 12    Greater Than 12
--	---	---	-------------------------------	---

Production Notes:  
 1. The information depicted on this product is for plotting purposes only.  
 2. Vector hydrographic data derived from surveys conducted by the USACE and approved partners.  
 3. Soundings are in feet and refer to Mean Lower Low Water (MLLW).  
 4. Raster Background: PanSharpened Worldview-2 imagery dated 2014.

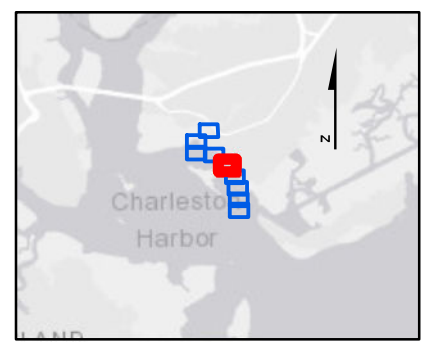
In no event shall the U.S. Army Corps of Engineers, Charleston District Office, Spatial Data Branch be liable for direct, indirect, incidental, consequential or special damages of any kind, including, but not limited to, loss of anticipated profits or benefits arising out of use of or reliance on the data.  
 These data sets have been developed from the best available sources. Although efforts have been made to ensure that the datasets are accurate and reliable, errors and variable conditions originating from physical sources used to develop the data may be reflected in the data supplied.  
**This product is not intended to be used for navigation.**  
 Mariners are encouraged to use all prudent safety measures.

U.S. Army Corps of Engineers  
 Charleston District



FIR R 4s 12ft 5M  
 "8"  
 Sewer

1  
 2  
 3  
 5



SHEET  
 REFERENCE  
 NUMBER  
 C002

**Shem Creek**  
 The information depicted on this map represents the results of surveys made on the dates indicated and can only be considered as indicating the general conditions existing at that time.  
 Concluded on: **13 MAY 2020**  
 Mount Pleasant, South Carolina

U.S. ARMY ENGINEER DISTRICT  
 CORPS OF ENGINEERS  
 CHARLESTON, SOUTH CAROLINA  
 SPATIAL DATA BRANCH  
 69A HAGOOD AVE  
 CHARLESTON, SC 29403  
 CESAC-GIS@USACE.ARMY.MIL

Designed By: <b>eHydro Software v3.82</b>	Survey Date: <b>13 MAY 2020</b>	Production Date: <b>14 MAY 2020</b>
Reviewed By: <b>CCW</b>	Absolute Scale: <b>1:1,800</b>	Project Reference Number: <b>CESAC-PRA-0002</b>
Reference Scale: <b>1 inch = 150 feet</b>	Survey Type: <b>CONDITION</b>	
Projection: <b>NAD 1983 StatePlane South Carolina FIPS 3900 Feet</b>		

**Shoalest Sounding**  
 ● Sounding  
*Sounding may cover several point areas and is calculated per reach quarter area*  
 \*+ indicates sounding above MLLW

**USCG Beacon**  
 ■ Green  
 ▲ Red  
 □ White

**USCG Buoy**  
 ● Green  
 ● Red  
 ● Coast Guard Racon

○ White  
 ○ Yellow  
 ○ USCG Light

**Depth in feet**

0-3	3 to 6	6 to 9	9 to 12	Greater Than 12
-----	--------	--------	---------	-----------------

0 250 500 Feet



**Production Notes:**

- The information depicted on this product is for plotting purposes only.
- Vector hydrographic data derived from surveys conducted by the USACE and approved partners.
- Soundings are in feet and refer to Mean Lower Low Water (MLLW).
- Raster Background: Panahorpeped Worldview-2 imagery dated 2014.

In no event shall the U.S. Army Corps of Engineers, Charleston District Office, Spatial Data Branch be liable for direct, indirect, incidental, consequential or special damages of any kind, including, but not limited to, loss of anticipated profits or benefits arising out of use of or reliance on the data.

These data sets have been developed from the best available sources. Although efforts have been made to ensure that the datasets are accurate and reliable, errors and variable conditions originating from physical sources used to develop the data may be reflected in the data supplied.

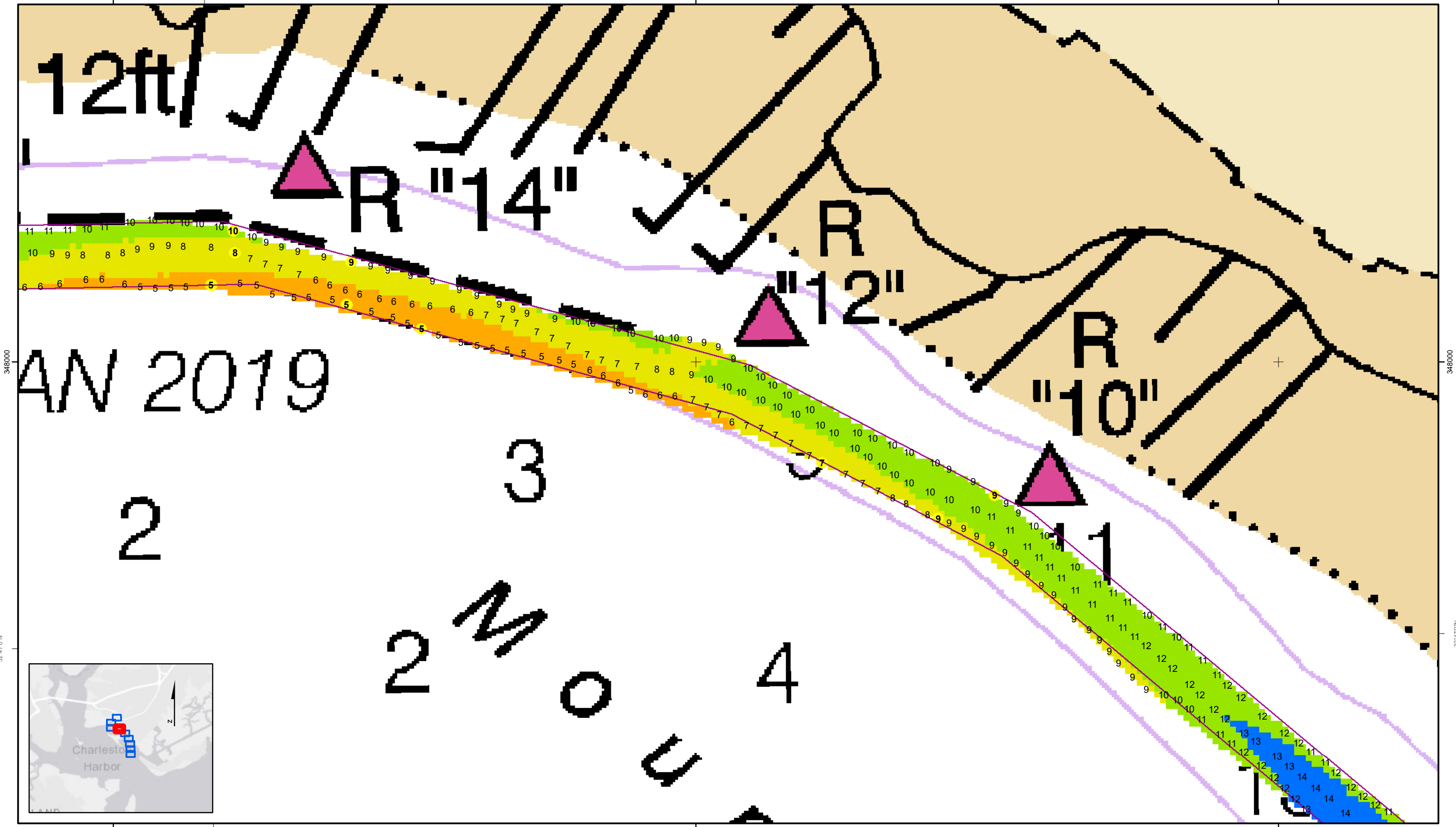
This product is not intended to be used for navigation.  
 Mariners are encouraged to use all prudent safety measures.



2343000 79°53'0"W

2344000

2345000

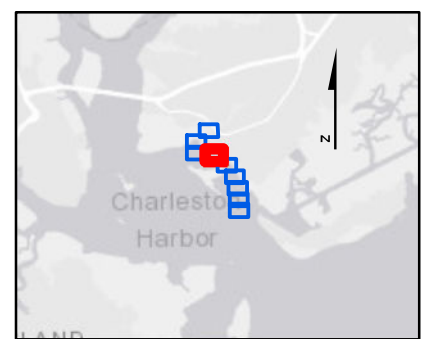


348000

348000

32°47'0"N

32°47'0"N



2343000 79°53'0"W

2344000

2345000

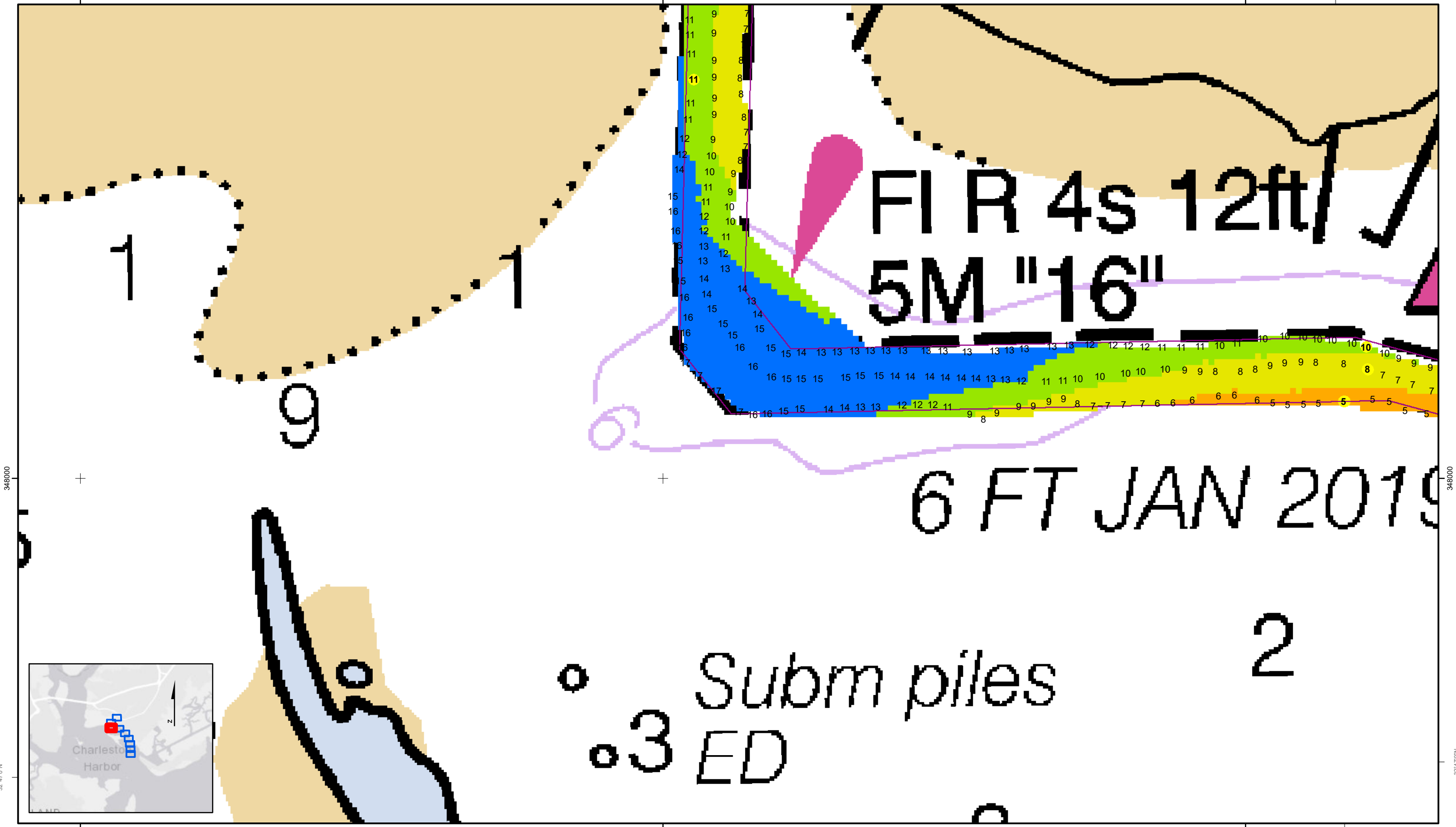
SHEET REFERENCE NUMBER <b>C002</b> Page 6 of 9	<b>Shem Creek</b> The information depicted on this map represents the results of surveys made on the dates indicated and can only be considered as indicating the general conditions existing at that time. Concluded on: <b>13 MAY 2020</b> Mount Pleasant, South Carolina	U.S. ARMY ENGINEER DISTRICT CORPS OF ENGINEERS CHARLESTON, SOUTH CAROLINA  SPATIAL DATA BRANCH 69A HAGOOD AVE. CHARLESTON, SC 29403 CESAC-GIS@USACE.ARMY.MIL	Designed By: <b>eHydro Software v3.82</b> Reviewed By: <b>CCW</b> Reference Scale: <b>1 inch = 150 feet</b> Projection: <b>NAD 1983 StatePlane South Carolina FIPS 3900 Feet</b>	Survey Date: <b>13 MAY 2020</b> Project Reference Number: <b>CESAC-PRA-0002</b> Survey Type: <b>CONDITION</b>	Production Date: <b>14 MAY 2020</b>
--	--	---	---	--	--

<b>Shoalest Sounding</b> Sounding <i>Sounding may cover several point areas and is calculated per reach quarter area</i> "+ " indicates sounding above MLLW	<b>USCG Beacon</b> Green Red White	<b>USCG Buoy</b> Green Red Coast Guard Racon	White Yellow USCG Light	<b>Depth in feet</b> 0-3 3 to 6 6 to 9 9 to 12 Greater Than 12
--	---	---	-------------------------------	---

**Production Notes:**  
 1. The information depicted on this product is for plotting purposes only.  
 2. Vector hydrographic data derived from surveys conducted by the USACE and approved partners.  
 3. Soundings are in feet and refer to Mean Lower Low Water (MLLW).  
 4. Raster Background: Panaharped Worldview-2 imagery dated 2014.

In no event shall the U.S. Army Corps of Engineers, Charleston District Office, Spatial Data Branch be liable for direct, indirect, incidental, consequential or special damages of any kind, including, but not limited to, loss of anticipated profits or benefits arising out of use of or reliance on the data.  
 These data sets have been developed from the best available sources. Although efforts have been made to ensure that the database are accurate and reliable, errors and variable conditions originating from physical sources used to develop the data may be reflected in the data supplied.  
 This product is not intended to be used for navigation.  
 Mariners are encouraged to use all prudent safety measures.

U.S. Army Corps of Engineers  
 Charleston District

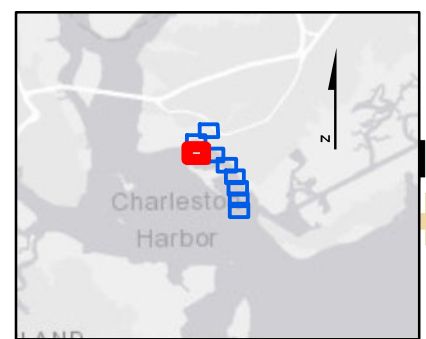


348000

348000

32°47'0"N

32°47'0"N



SHEET REFERENCE NUMBER <b>C002</b> Page 7 of 9	<b>Shem Creek</b> The information depicted on this map represents the results of surveys made on the dates indicated and can only be considered as indicating the general conditions existing at that time. Concluded on: <b>13 MAY 2020</b> Mount Pleasant, South Carolina	U.S. ARMY ENGINEER DISTRICT CORPS OF ENGINEERS CHARLESTON, SOUTH CAROLINA  SPATIAL DATA BRANCH 69A HAGOOD AVE. CHARLESTON, SC 29403 CESAC-GIS@USACE.ARMY.MIL	Designed By: <b>eHydro Software v3.82</b> Reviewed By: <b>CCW</b> Reference Scale: <b>1 inch = 150 feet</b> Projection: <b>NAD 1983 StatePlane South Carolina FIPS 3900 Feet</b>	Survey Date: <b>13 MAY 2020</b> Project Reference Number: <b>CESAC-PRA-0002</b> Survey Type: <b>CONDITION</b>	Production Date: <b>14 MAY 2020</b>
--	--	---	---	--	--

<b>Shoalest Sounding</b> ● Sounding Sounding may cover several point areas and is calculated per reach quarter area "+ " indicates sounding above MLLW	<b>USCG Beacon</b> ■ Green ▲ Red □ White	<b>USCG Buoy</b> ● Green ● Red ● Coast Guard Racon	White Yellow USCG Light	<b>Depth in feet</b> 0-3    3 to 6    6 to 9    9 to 12    Greater Than 12
---	---	---	-------------------------------	---

Production Notes:

- The information depicted on this product is for plotting purposes only.
- Vector hydrographic data derived from surveys conducted by the USACE and approved partners.
- Soundings are in feet and refer to Mean Lower Low Water (MLLW).
- Raster Background: PanSharpened Worldview-2 imagery dated 2014.

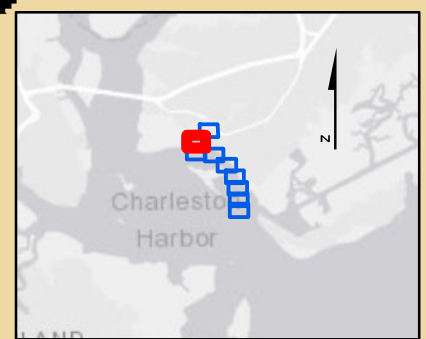
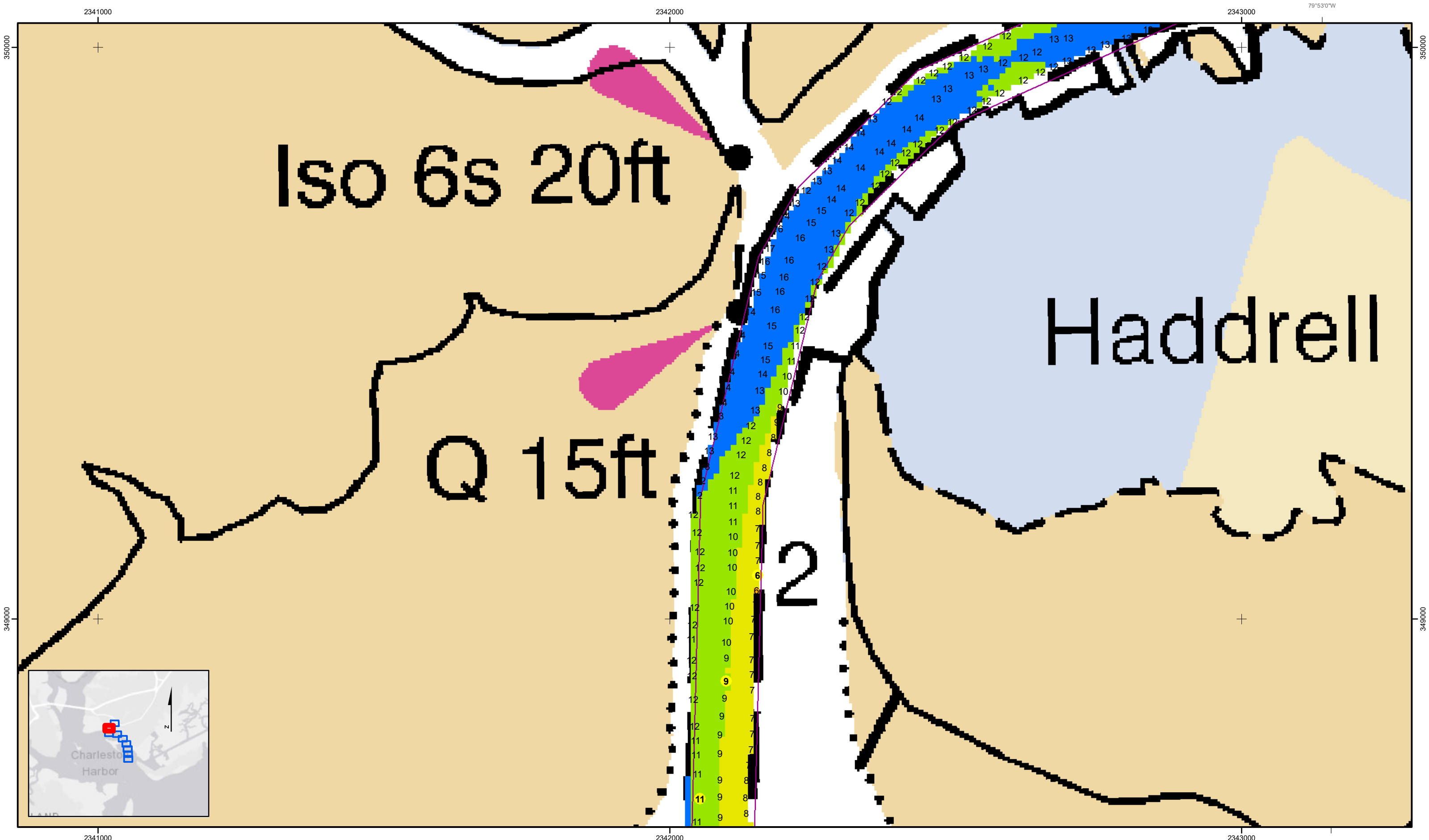
In no event shall the U.S. Army Corps of Engineers, Charleston District Office, Spatial Data Branch be liable for direct, indirect, incidental, consequential or special damages of any kind, including, but not limited to, loss of anticipated profits or benefits arising out of use of or reliance on the data.

These data sets have been developed from the best available sources. Although efforts have been made to ensure that the database are accurate and reliable, errors and variable conditions originating from physical sources used to develop the data may be reflected in the data supplied.

This product is not intended to be used for navigation. Mariners are encouraged to use all prudent safety measures.

U.S. Army Corps of Engineers  
Charleston District





SHEET REFERENCE NUMBER  
**C002**  
 Page 8 of 9

**Shem Creek**  
 The information depicted on this map represents the results of surveys made on the dates indicated and can only be considered as indicating the general conditions existing at that time.  
 Concluded on: **13 MAY 2020**  
 Mount Pleasant, South Carolina

U.S. ARMY ENGINEER DISTRICT CORPS OF ENGINEERS CHARLESTON, SOUTH CAROLINA  SPATIAL DATA BRANCH 69A HAGOOD AVE. CHARLESTON, SC 29403 CESAC-GIS@USACE.ARMY.MIL	Designed By: <b>eHydro Software v3.8.2</b> Reviewed By: <b>CCW</b> Reference Scale: <b>1 inch = 150 feet</b> Projection: <b>NAD 1983 StatePlane South Carolina FIPS 3900 Feet</b>	Survey Date: <b>13 MAY 2020</b> Project Reference Number: <b>CESAC-PRA-0002</b> Survey Type: <b>CONDITION</b>	Production Date: <b>14 MAY 2020</b>
---	--	--	--

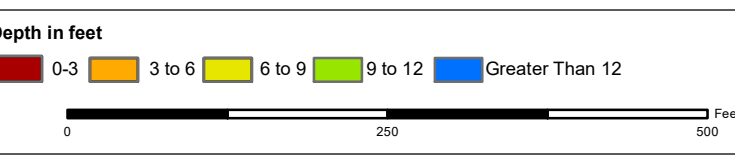
**Shoalest Sounding**

● Sounding  
*Sounding may cover several point areas and is calculated per reach quarter area*  
 \*+ indicates sounding above MLLW

**USCG Beacon**  
 ■ Green  
 ▲ Red  
 □ White

**USCG Buoy**  
 ● Green  
 ● Red  
 ● Coast Guard Racon

○ White  
 ○ Yellow  
 ○ USCG Light



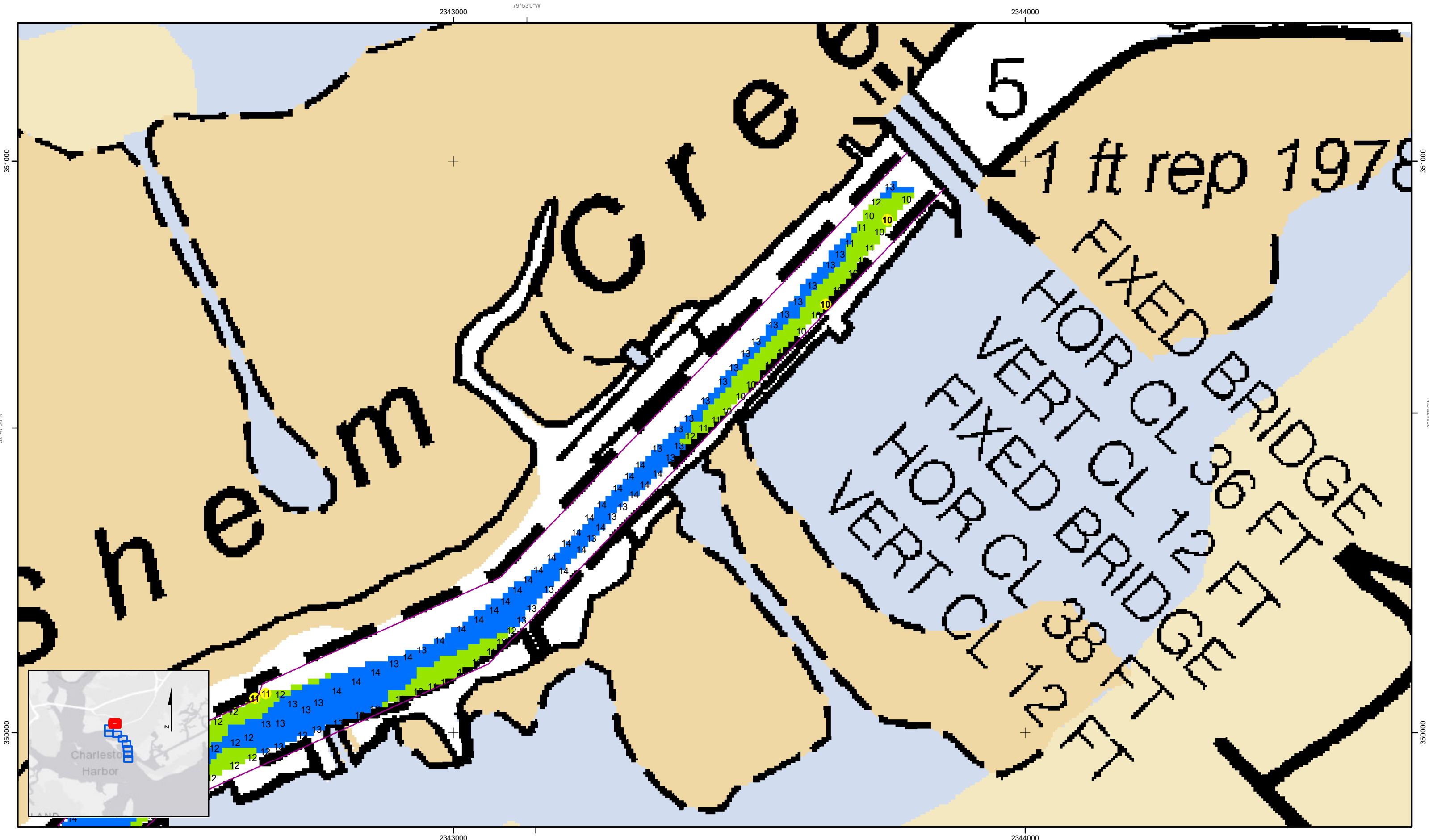
**Production Notes:**

- The information depicted on this product is for plotting purposes only.
- Vector hydrographic data derived from surveys conducted by the USACE and approved partners.
- Soundings are in feet and refer to Mean Lower Low Water (MLLW).
- Raster Background: PanSharpened Worldview-2 imagery dated 2014.

In no event shall the U.S. Army Corps of Engineers, Charleston District Office, Spatial Data Branch be liable for direct, indirect, incidental, consequential or special damages of any kind, including, but not limited to, loss of anticipated profits or benefits arising out of use of or reliance on the data.  
 These data sets have been developed from the best available sources. Although efforts have been made to ensure that the datasets are accurate and reliable, errors and variable conditions originating from physical sources used to develop the data may be reflected in the data supplied.  
**This product is not intended to be used for navigation.**  
**Mariners are encouraged to use all prudent safety measures.**







SHEET REFERENCE NUMBER <b>C002</b> Page 9 of 9	<b>Shem Creek</b> The information depicted on this map represents the results of surveys made on the dates indicated and can only be considered as indicating the general conditions existing at that time. Concluded on: <b>13 MAY 2020</b> Mount Pleasant, South Carolina	U.S. ARMY ENGINEER DISTRICT CORPS OF ENGINEERS CHARLESTON, SOUTH CAROLINA  SPATIAL DATA BRANCH 69A HAGOOD AVE. CHARLESTON, SC 29403 CESAC-GIS@USACE.ARMY.MIL	Designed By: <b>eHydro Software v3.82</b> Reviewed By: <b>CCW</b> Reference Scale: <b>1 inch = 150 feet</b> Projection: <b>NAD 1983 StatePlane South Carolina FIPS 3900 Feet</b>	Survey Date: <b>13 MAY 2020</b> Production Date: <b>14 MAY 2020</b> Project Reference Number: <b>CESAC-PRA-0002</b> Survey Type: <b>CONDITION</b>
--	--	---	---	--

<b>Shoalest Sounding</b> ● Sounding <i>Sounding may cover several point areas and is calculated per reach quarter area</i> *+ indicates sounding above MLLW	<b>USCG Beacon</b> ■ Green ▲ White ■ White	<b>USCG Buoy</b> ● Green ● Red ● Coast Guard Racon	White Yellow USCG Light	<b>Depth in feet</b> 0-3 3 to 6 6 to 9 9 to 12 Greater Than 12
--	---	---	-------------------------------	---

**Production Notes:**

- The information depicted on this product is for plotting purposes only.
- Vector hydrographic data derived from surveys conducted by the USACE and approved partners.
- Soundings are in feet and refer to Mean Lower Low Water (MLLW).
- Raster Background: Panharpered Worldview-2 imagery dated 2014.

In no event shall the U.S. Army Corps of Engineers, Charleston District Office, Spatial Data Branch be liable for direct, indirect, incidental, consequential or special damages of any kind, including, but not limited to, loss of anticipated profits or benefits arising out of use of or reliance on the data.

These data sets have been developed from the best available sources. Although efforts have been made to ensure that the database are accurate and reliable, errors and variable conditions originating from physical sources used to develop the data may be reflected in the data supplied.

This product is not intended to be used for navigation. Mariners are encouraged to use all prudent safety measures.