

79°52'30"W

2346000

2347000

2348000

342000

342000

32°46'00"N

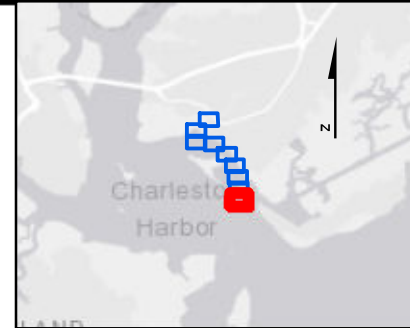
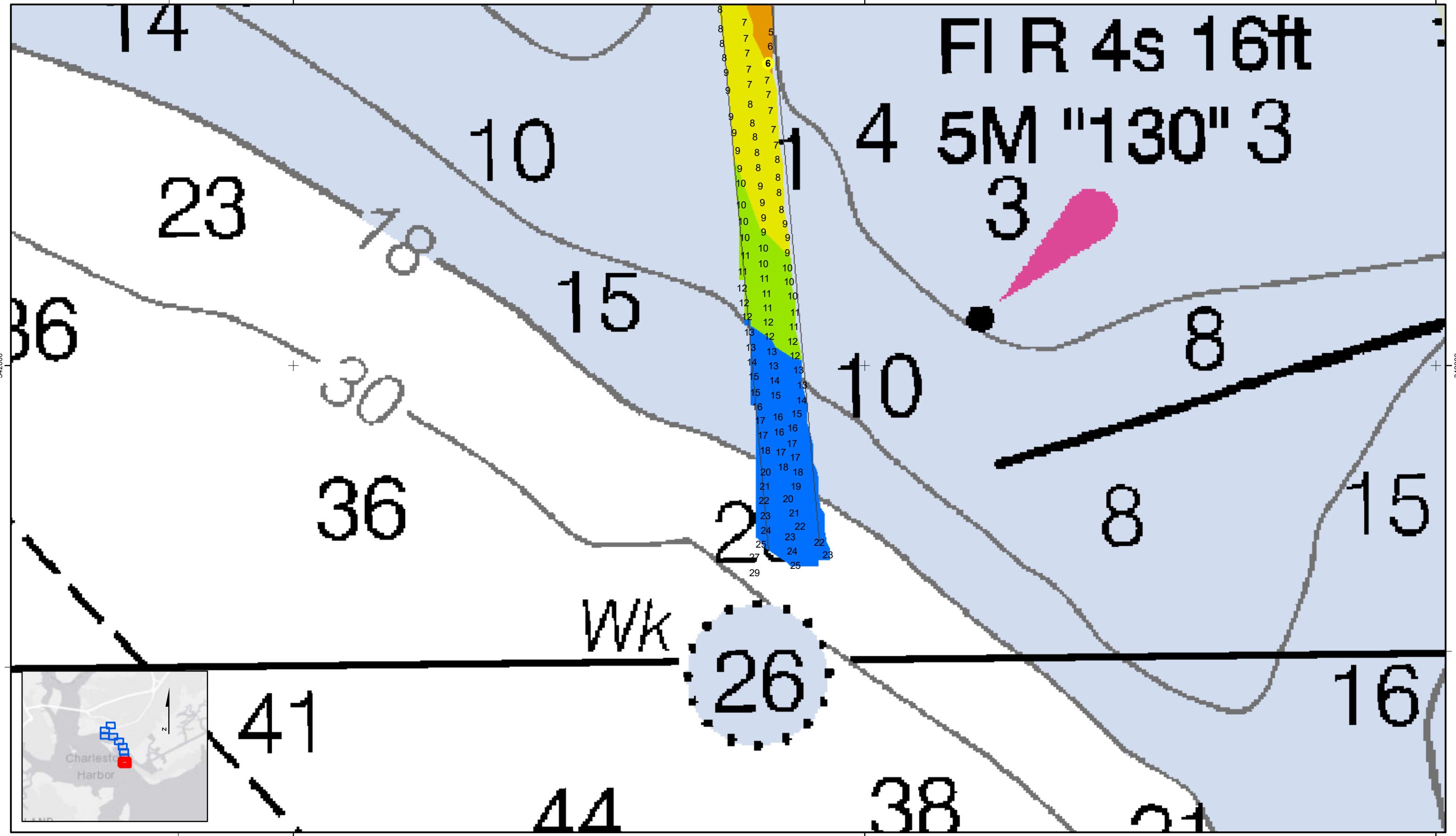
32°46'00"N

79°52'30"W

2346000

2347000

2348000



SHEET REFERENCE NUMBER C002 Page 1 of 9	Shem Creek The information depicted on this map represents the results of surveys made on the dates indicated and can only be considered as indicating the general conditions existing at that time. Concluded on: 5 NOV 2020 Mount Pleasant, South Carolina	U.S. ARMY ENGINEER DISTRICT CORPS OF ENGINEERS CHARLESTON, SOUTH CAROLINA SPATIAL DATA BRANCH 69A HAGOOD AVE. CHARLESTON, SC 29403 CESAC-GIS@USACE.ARMY.MIL	Designed By: eHydro Software v3.82 Reviewed By: CCW Reference Scale: 1 inch = 155 feet Projection: NAD 1983 StatePlane South Carolina FIPS 3900 Feet	Survey Date: 5 NOV 2020 Project Reference Number: CESAC-PRA-0002 Survey Type: CONDITION	Production Date: 6 NOV 2020
--	---	---	---	---	---------------------------------------

Shoalest Sounding ● Sounding <i>Sounding may cover several point areas and is calculated per reach quarter area</i> *+ indicates sounding above MLLW	USCG Beacon ■ Green ▲ Red □ White	USCG Buoy ● Green ● Red ● Coast Guard Racon	White Yellow USCG Light	Depth in feet 0-3 3 to 6 6 to 9 9 to 12 Greater Than 12	0 250 500 Feet
--	---	---	-------------------------------	---	----------------

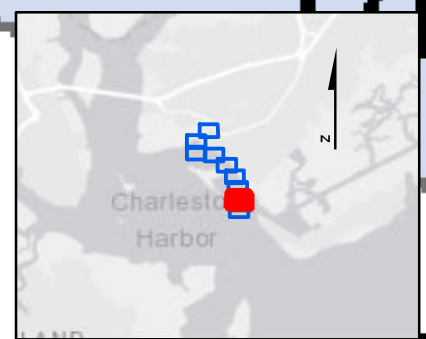
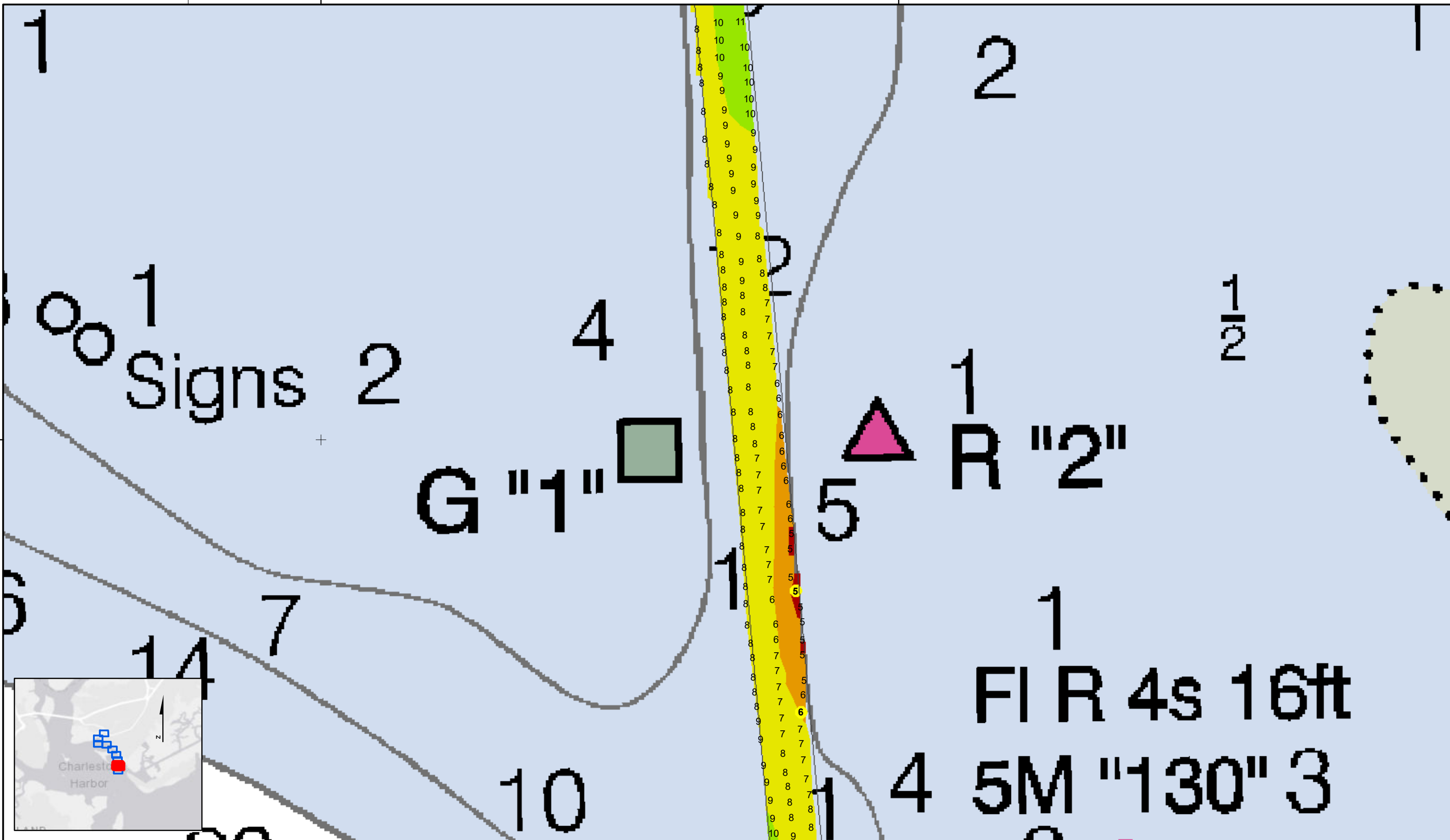
Production Notes:

- The information depicted on this product is for plotting purposes only.
- Vector hydrographic data derived from surveys conducted by the USACE and approved partners.
- Soundings are in feet and refer to Mean Lower Low Water (MLLW).
- Raster Background: PanSharpened Worldview-2 imagery dated 2014.

In no event shall the U.S. Army Corps of Engineers, Charleston District Office, Spatial Data Branch be liable for direct, indirect, incidental, consequential or special damages of any kind, including, but not limited to, loss of anticipated profits or benefits arising out of use of or reliance on the data.

These data sets have been developed from the best available sources. Although efforts have been made to ensure that the datasets are accurate and reliable, errors and variable conditions originating from physical sources used to develop the data may be reflected in the data supplied.

This product is not intended to be used for navigation. Mariners are encouraged to use all prudent safety measures.



SHEET REFERENCE NUMBER C002 Page 2 of 9	Shem Creek The information depicted on this map represents the results of surveys made on the dates indicated and can only be considered as indicating the general conditions existing at that time. Concluded on: 5 NOV 2020 Mount Pleasant, South Carolina	U.S. ARMY ENGINEER DISTRICT CORPS OF ENGINEERS CHARLESTON, SOUTH CAROLINA SPATIAL DATA BRANCH 69A HAGOOD AVE CHARLESTON, SC 29403 CESAC-GIS@USACE.ARMY.MIL	Designed By: eHydro Software v3.82 Reviewed By: CCW Reference Scale: 1 inch = 155 feet Projection: NAD 1983 StatePlane South Carolina FIPS 3900 Feet	Survey Date: 5 NOV 2020 Project Reference Number: CESAC-PRA-0002 Survey Type: CONDITION	Production Date: 6 NOV 2020
--	---	--	---	---	---------------------------------------

Shoalest Sounding ● Sounding <i>Sounding may cover several point areas and is calculated per reach quarter area</i> *+ indicates sounding above MLLW	USCG Beacon ■ Green ▲ Red □ White	USCG Buoy ● Green ● Red ● Coast Guard Racon	White Yellow USCG Light	Depth in feet 0-3 3 to 6 6 to 9 9 to 12 Greater Than 12
--	---	---	-------------------------------	---

0 250 500 Feet

Production Notes:

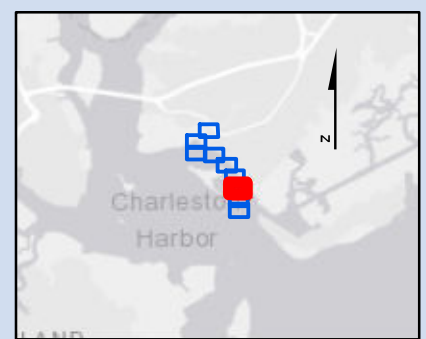
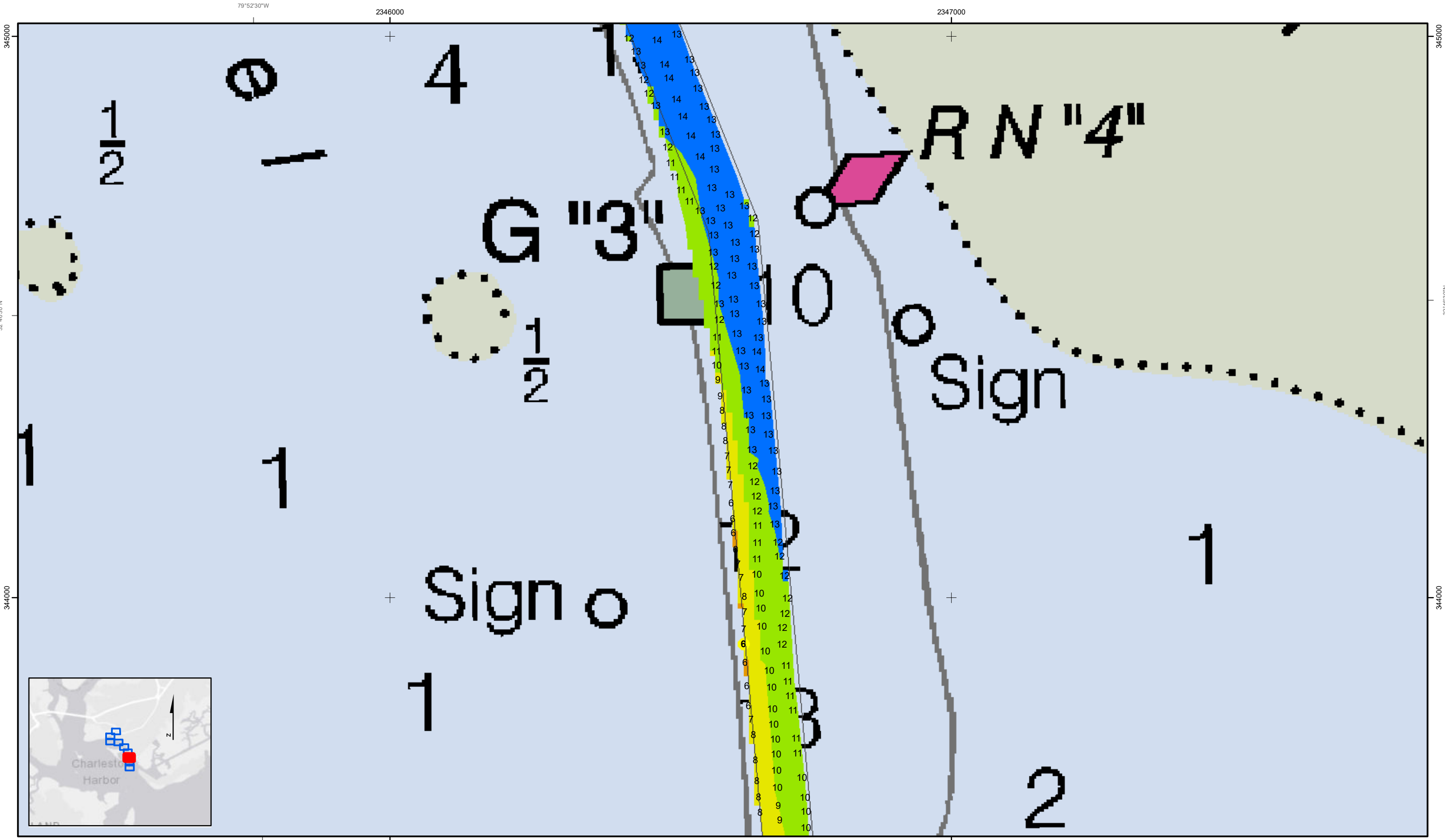
- The information depicted on this product is for plotting purposes only.
- Vector hydrographic data derived from surveys conducted by the USACE and approved partners.
- Soundings are in feet and refer to Mean Lower Low Water (MLLW).
- Raster Background: PanSharpened Worldview-2 imagery dated 2014.

In no event shall the U.S. Army Corps of Engineers, Charleston District Office, Spatial Data Branch be liable for direct, indirect, incidental, consequential or special damages of any kind, including, but not limited to, loss of anticipated profits or benefits arising out of use of or reliance on the data.

These data sets have been developed from the best available sources. Although efforts have been made to ensure that the datasets are accurate and reliable, errors and variable conditions originating from physical sources used to develop the data may be reflected in the data supplied.

This product is not intended to be used for navigation. Mariners are encouraged to use all prudent safety measures.

U.S. Army Corps of Engineers
Charleston District



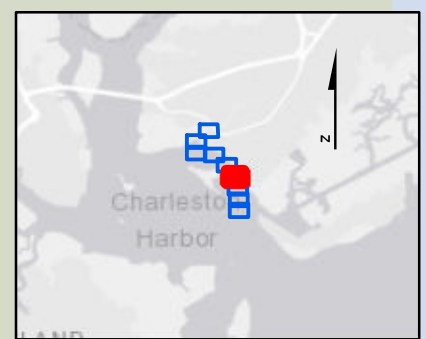
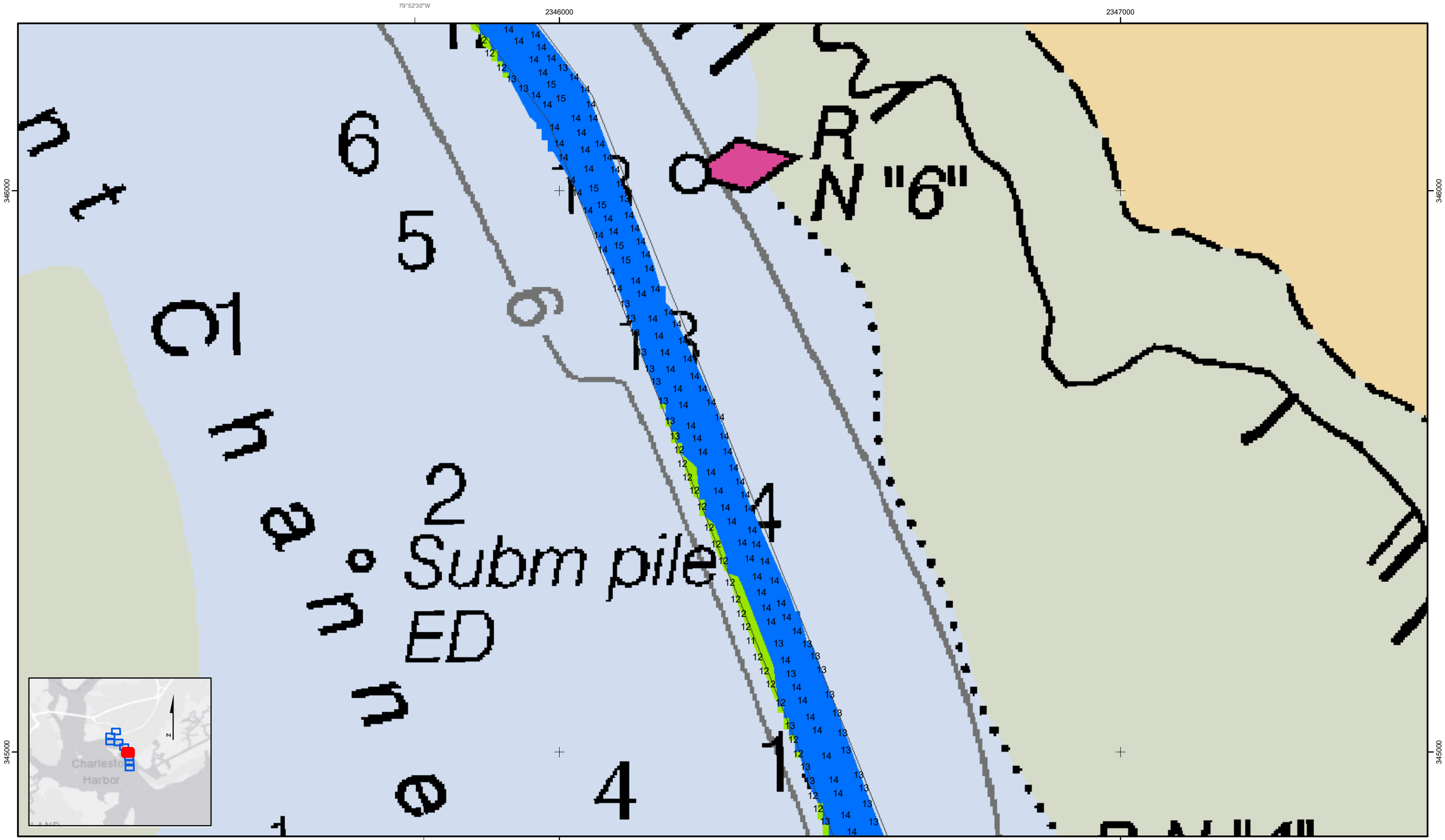
SHEET REFERENCE NUMBER C002 Page 6 of 9	Shem Creek The information depicted on this map represents the results of surveys made on the dates indicated and can only be considered as indicating the general conditions existing at that time. Concluded on: 5 NOV 2020 Mount Pleasant, South Carolina	U.S. ARMY ENGINEER DISTRICT CORPS OF ENGINEERS CHARLESTON, SOUTH CAROLINA SPATIAL DATA BRANCH 69A HAGOOD AVE CHARLESTON, SC 29403 CESAC-GIS@USACE.ARMY.MIL	Designed By: eHydro Software v3.82 Reviewed By: CCW Reference Scale: 1 inch = 155 feet Projection: NAD 1983 StatePlane South Carolina FIPS 3900 Feet	Survey Date: 5 NOV 2020 Project Reference Number: CESAC-PRA-0002 Survey Type: CONDITION	Production Date: 6 NOV 2020
--	---	--	---	---	---------------------------------------

Shoalest Sounding Sounding <i>Sounding may cover several point areas and is calculated per reach quarter area</i> "+ " indicates sounding above MLLW	USCG Beacon Green Red White	USCG Buoy Green Red Coast Guard Racon	White Yellow USCG Light	Depth in feet 0-3 3 to 6 6 to 9 9 to 12 Greater Than 12
--	---	---	-------------------------------	---

Production Notes:
 1. The information depicted on this product is for plotting purposes only.
 2. Vector hydrographic data derived from surveys conducted by the USACE and approved partners.
 3. Soundings are in feet and refer to Mean Lower Low Water (MLLW).
 4. Raster Background: PanSharpened Worldview-2 imagery dated 2014.

In no event shall the U.S. Army Corps of Engineers, Charleston District Office, Spatial Data Branch be liable for direct, indirect, incidental, consequential or special damages of any kind, including, but not limited to, loss of anticipated profits or benefits arising out of use of or reliance on the data.
 These data sets have been developed from the best available sources. Although efforts have been made to ensure that the datasets are accurate and reliable, errors and variable conditions originating from physical sources used to develop the data may be reflected in the data supplied.
This product is not intended to be used for navigation.
Mariners are encouraged to use all prudent safety measures.

U.S. Army Corps of Engineers
 Charleston District



Shem Creek
 The information depicted on this map represents the results of surveys made on the dates indicated and can only be considered as indicating the general conditions existing at that time.
 Concluded on: **5 NOV 2020**
 Mount Pleasant, South Carolina

U.S. ARMY ENGINEER DISTRICT
 CORPS OF ENGINEERS
 CHARLESTON, SOUTH CAROLINA
 SPATIAL DATA BRANCH
 69A HAGOOD AVE
 CHARLESTON, SC 29403
 CESAC-GIS@USACE.ARMY.MIL

Designed By: eHydro Software v3.82	Survey Date: 5 NOV 2020	Production Date: 6 NOV 2020
Reviewed By: CCW	Absolute Scale: 1:1,854	Project Reference Number: CESAC-PRA-0002
Reference Scale: 1 inch = 155 feet	Survey Type: CONDITION	
Projection: NAD 1983 StatePlane South Carolina FIPS 3900 Feet		

Shoalest Sounding
 ● Sounding
Sounding may cover several point areas and is calculated per reach quarter area
 *+ indicates sounding above MLLW

USCG Beacon
 ■ Green
 ▲ Red
 □ White

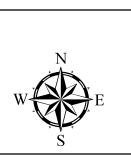
USCG Buoy
 ● Green
 ● Red
 ● Coast Guard Racon

USCG Light
 ● White
 ● Yellow
 ● Pink

Depth in feet

0-3	3 to 6	6 to 9	9 to 12	Greater Than 12
-----	--------	--------	---------	-----------------

0 250 500 Feet



Production Notes:

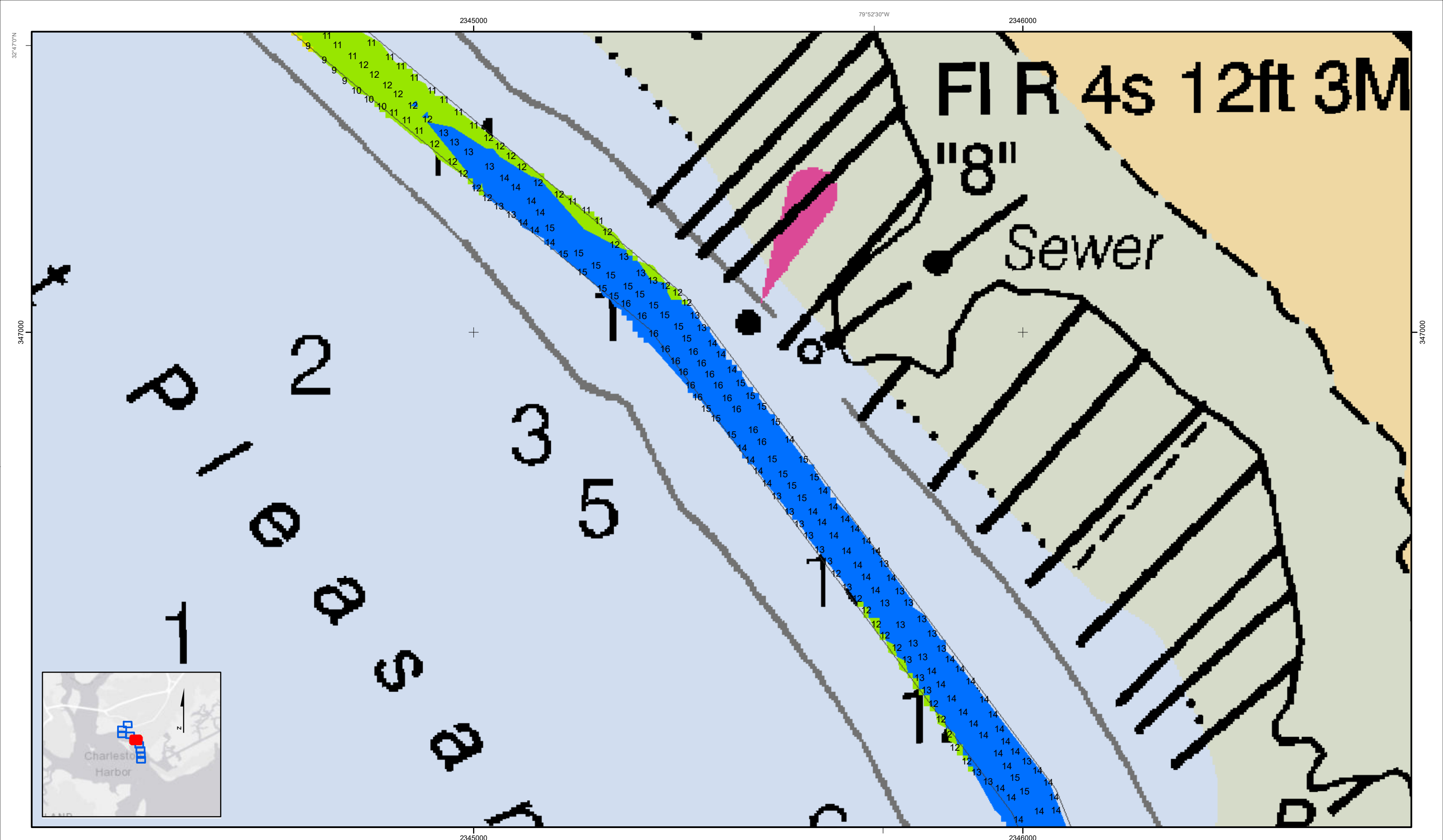
- The information depicted on this product is for plotting purposes only.
- Vector hydrographic data derived from surveys conducted by the USACE and approved partners.
- Soundings are in feet and refer to Mean Lower Low Water (MLLW).
- Raster Background: PanSharpened Worldview-2 imagery dated 2014.

In no event shall the U.S. Army Corps of Engineers, Charleston District Office, Spatial Data Branch be liable for direct, indirect, incidental, consequential or special damages of any kind, including, but not limited to, loss of anticipated profits or benefits arising out of use of or reliance on the data.

These data sets have been developed from the best available sources. Although efforts have been made to ensure that the datasets are accurate and reliable, errors and variable conditions originating from physical sources used to develop the data may be reflected in the data supplied.

This product is not intended to be used for navigation.
 Mariners are encouraged to use all prudent safety measures.





SHEET REFERENCE NUMBER C002 Page 5 of 9	Shem Creek The information depicted on this map represents the results of surveys made on the dates indicated and can only be considered as indicating the general conditions existing at that time. Concluded on: 5 NOV 2020 Mount Pleasant, South Carolina	U.S. ARMY ENGINEER DISTRICT CORPS OF ENGINEERS CHARLESTON, SOUTH CAROLINA SPATIAL DATA BRANCH 69A HAGOOD AVE. CHARLESTON, SC 29403 CESAC-GIS@USACE.ARMY.MIL	Designed By: eHydro Software v3.82 Reviewed By: CCW Reference Scale: 1 inch = 155 feet Projection: NAD 1983 StatePlane South Carolina FIPS 3900 Feet	Survey Date: 5 NOV 2020 Project Reference Number: CESAC-PRA-0002 Survey Type: CONDITION	Production Date: 6 NOV 2020
--	---	---	---	---	---------------------------------------

Shoalest Sounding ● Sounding <i>Sounding may cover several point areas and is calculated per reach quarter area</i> *+ indicates sounding above MLLW	USCG Beacon ■ Green ▲ Red □ White	USCG Buoy ● Green ● Red ● Coast Guard Racon	White Yellow USCG Light	Depth in feet 0-3 3 to 6 6 to 9 9 to 12 Greater Than 12 0 250 500 Feet
--	---	---	-------------------------------	---

Production Notes:

- The information depicted on this product is for plotting purposes only.
- Vector hydrographic data derived from surveys conducted by the USACE and approved partners.
- Soundings are in feet and refer to Mean Lower Low Water (MLLW).
- Raster Background: Panobase/Worldview-2 imagery dated 2014.

In no event shall the U.S. Army Corps of Engineers, Charleston District Office, Spatial Data Branch be liable for direct, indirect, incidental, consequential or special damages of any kind, including, but not limited to, loss of anticipated profits or benefits arising out of use of or reliance on the data.

These data sets have been developed from the best available sources. Although efforts have been made to ensure that the datasets are accurate and reliable, errors and variable conditions originating from physical sources used to develop the data may be reflected in the data supplied.

This product is not intended to be used for navigation. Mariners are encouraged to use all prudent safety measures.

2343000

79°53'0"W

2344000

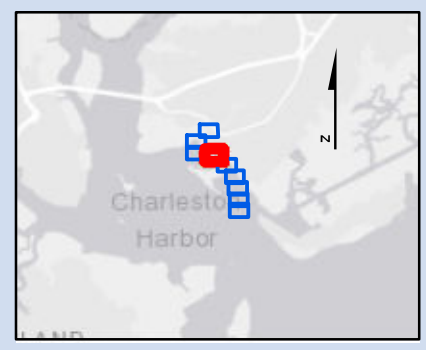
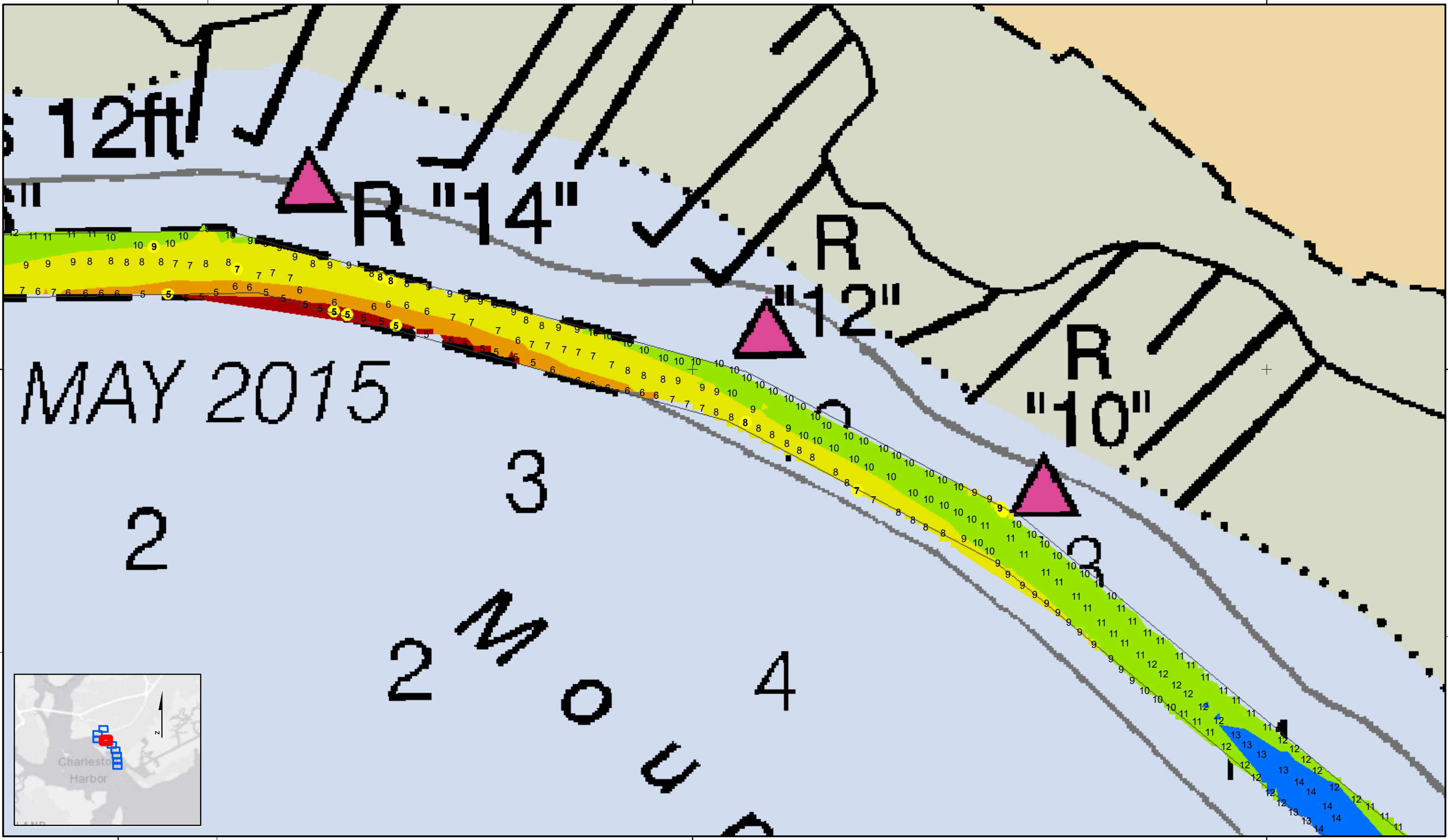
2345000

348000

348000

32°47'0"N

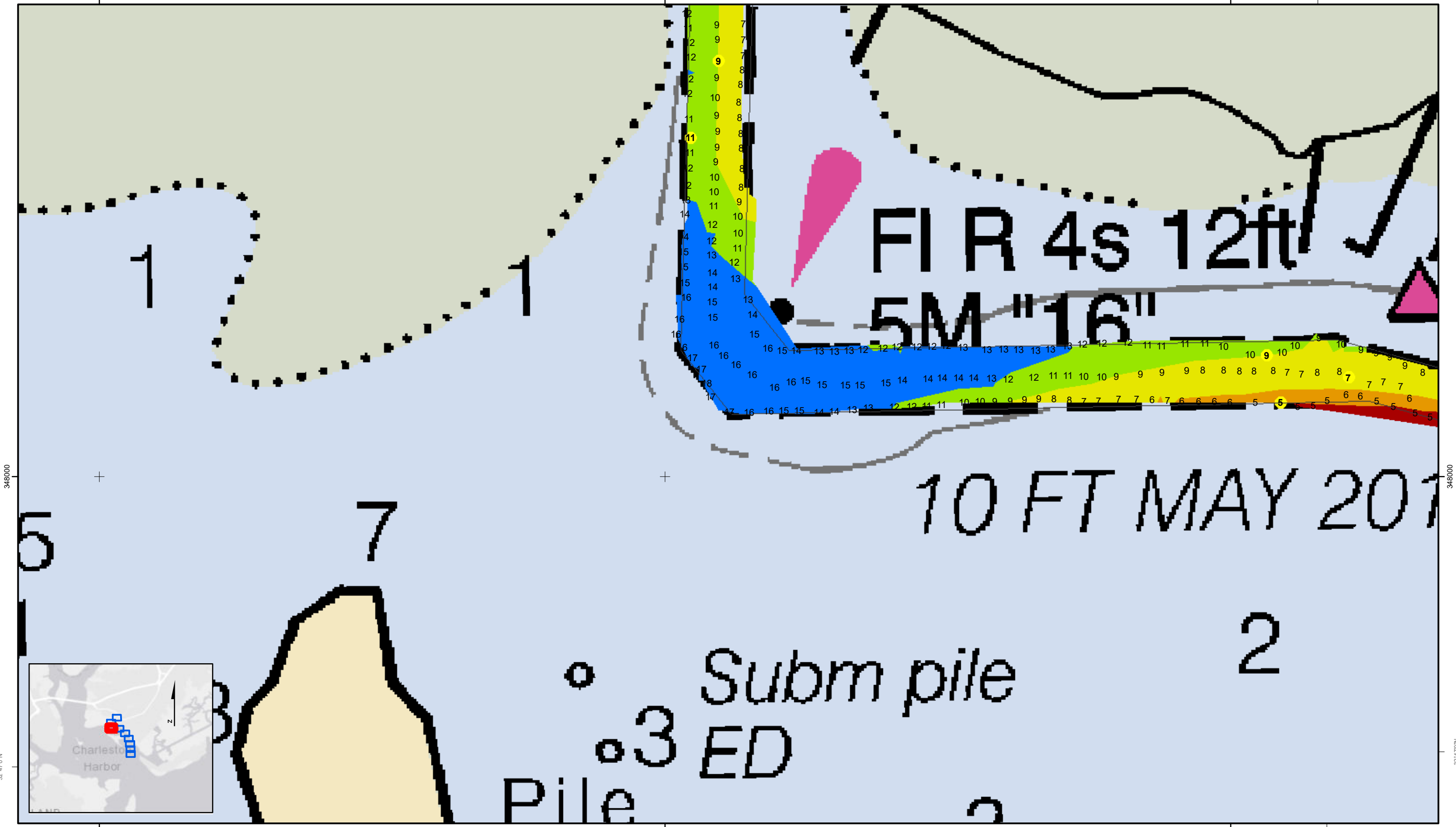
32°47'0"N



SHEET REFERENCE NUMBER C002 Page 6 of 9	Shem Creek The information depicted on this map represents the results of surveys made on the dates indicated and can only be considered as indicating the general conditions existing at that time. Concluded on: 5 NOV 2020 Mount Pleasant, South Carolina	U.S. ARMY ENGINEER DISTRICT CORPS OF ENGINEERS CHARLESTON, SOUTH CAROLINA SPATIAL DATA BRANCH 69A HAGOOD AVE. CHARLESTON, SC 29403 CESAC-GIS@USACE.ARMY.MIL	Designed By: eHydro Software v3.82 Reviewed By: CCW Reference Scale: 1 inch = 155 feet Projection: NAD 1983 StatePlane South Carolina FIPS 3900 Feet	Survey Date: 5 NOV 2020 Project Reference Number: CESAC-PRA-0002 Survey Type: CONDITION	Production Date: 6 NOV 2020
--	---	---	---	---	---------------------------------------

Shoalest Sounding Sounding <i>Sounding may cover several point areas and is calculated per reach quarter area</i> "+." indicates sounding above MLLW	USCG Beacon Green Red White	USCG Buoy Green Red Coast Guard Racon	White Yellow USCG Light	Depth in feet 0-3 3 to 6 6 to 9 9 to 12 Greater Than 12
--	---	---	-------------------------------	---

Production Notes:
 1. The information depicted on this product is for plotting purposes only.
 2. Vector hydrographic data derived from surveys conducted by the USACE and approved partners to Mean Lower Low Water (MLLW).
 3. Soundings are in feet and refer to Mean Lower Low Water (MLLW).
 4. Raster Background: Panaharpened Worldview-2 imagery dated 2014.
 In no event shall the U.S. Army Corps of Engineers, Charleston District Office, Spatial Data Branch be liable for direct, indirect, incidental, consequential or special damages of any kind, including, but not limited to, loss of anticipated profits or benefits arising out of use of or reliance on the data.
 These data sets have been developed from the best available sources. Although efforts have been made to ensure that the datasets are accurate and reliable, errors and variable conditions originating from physical sources used to develop the data may be reflected in the data supplied.
 This product is not intended to be used for navigation.
 Mariners are encouraged to use all prudent safety measures.

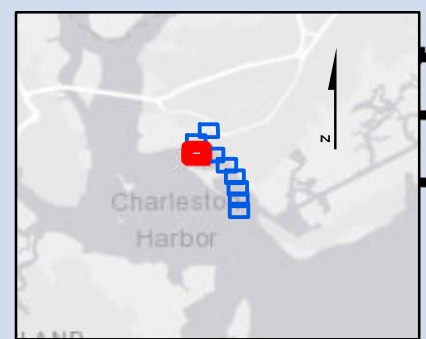


348000

348000

32°47'0"N

32°47'0"N



Shem Creek
 The information depicted on this map represents the results of surveys made on the dates indicated and can only be considered as indicating the general conditions existing at that time.
 Concluded on: **5 NOV 2020**
 Mount Pleasant, South Carolina

U.S. ARMY ENGINEER DISTRICT
 CORPS OF ENGINEERS
 CHARLESTON, SOUTH CAROLINA
 SPATIAL DATA BRANCH
 69A HAGOOD AVE.
 CHARLESTON, SC 29403
 CESAC-GIS@USACE.ARMY.MIL

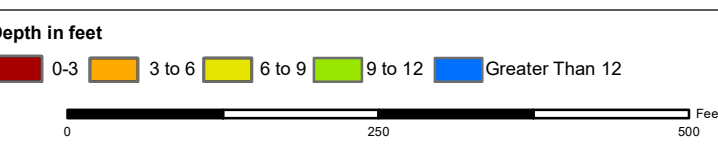
Designed By: eHydro Software v3.82	Survey Date: 5 NOV 2020	Production Date: 6 NOV 2020
Reviewed By: CCW	Absolute Scale: 1:1,854	Project Reference Number: CESAC-PRA-0002
Reference Scale: 1 inch = 155 feet	Survey Type: CONDITION	
Projection: NAD 1983 StatePlane South Carolina FIPS 3900 Feet		

Shoalest Sounding
 Sounding may cover several point areas and is calculated per reach quarter area
 "+" indicates sounding above MLLW

USCG Beacon
 Green
 Red

USCG Buoy
 Green
 Red
 Coast Guard Racon

White
 Yellow
 USCG Light



Production Notes:

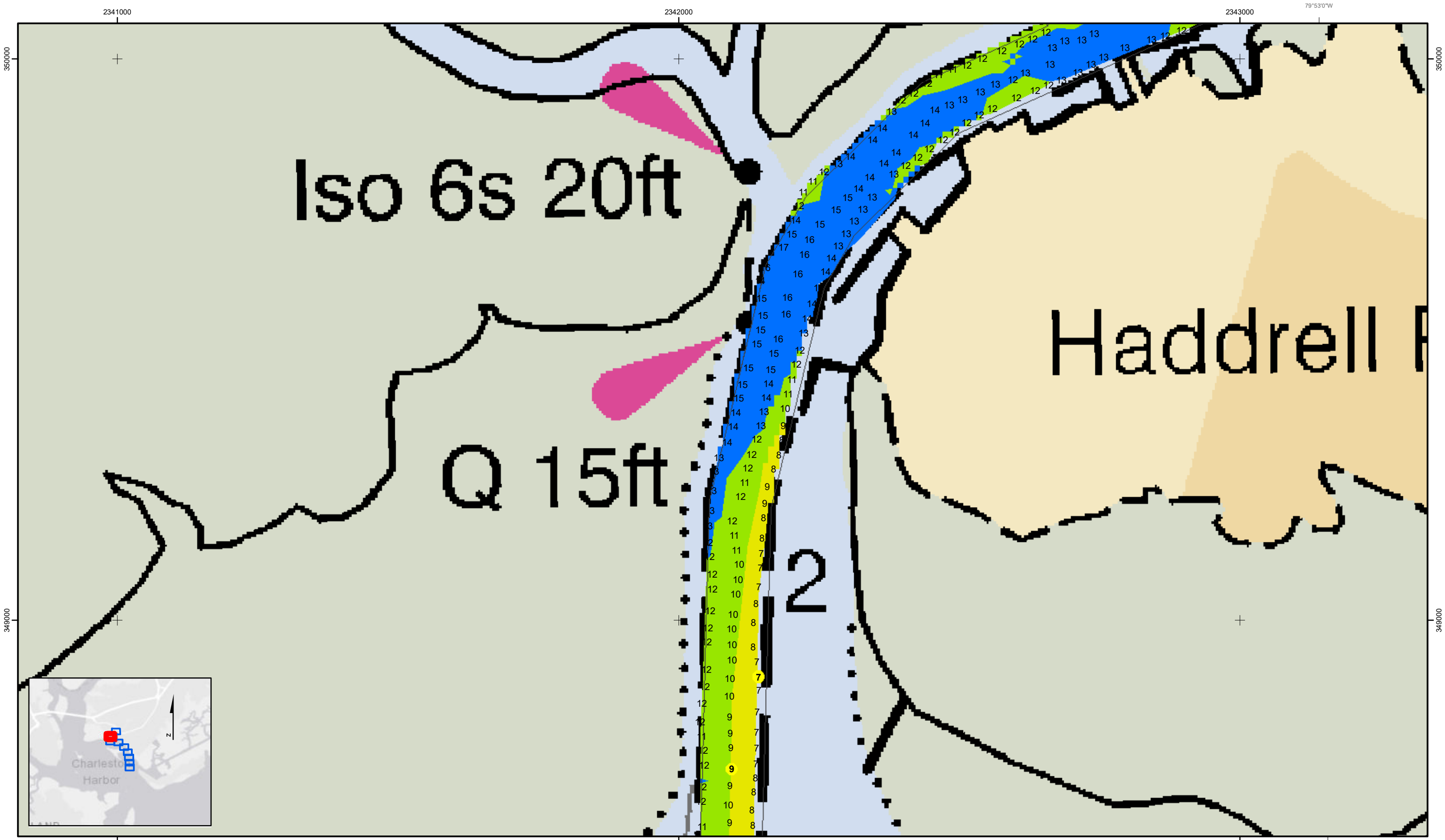
- The information depicted on this product is for plotting purposes only.
- Vector hydrographic data derived from surveys conducted by the USACE and approved partners.
- Soundings are in feet and refer to Mean Lower Low Water (MLLW).
- Raster Background: PanSharpened Worldview-2 imagery dated 2014.

In no event shall the U.S. Army Corps of Engineers, Charleston District Office, Spatial Data Branch be liable for direct, indirect, incidental, consequential or special damages of any kind, including, but not limited to, loss of anticipated profits or benefits arising out of use of or reliance on the data.

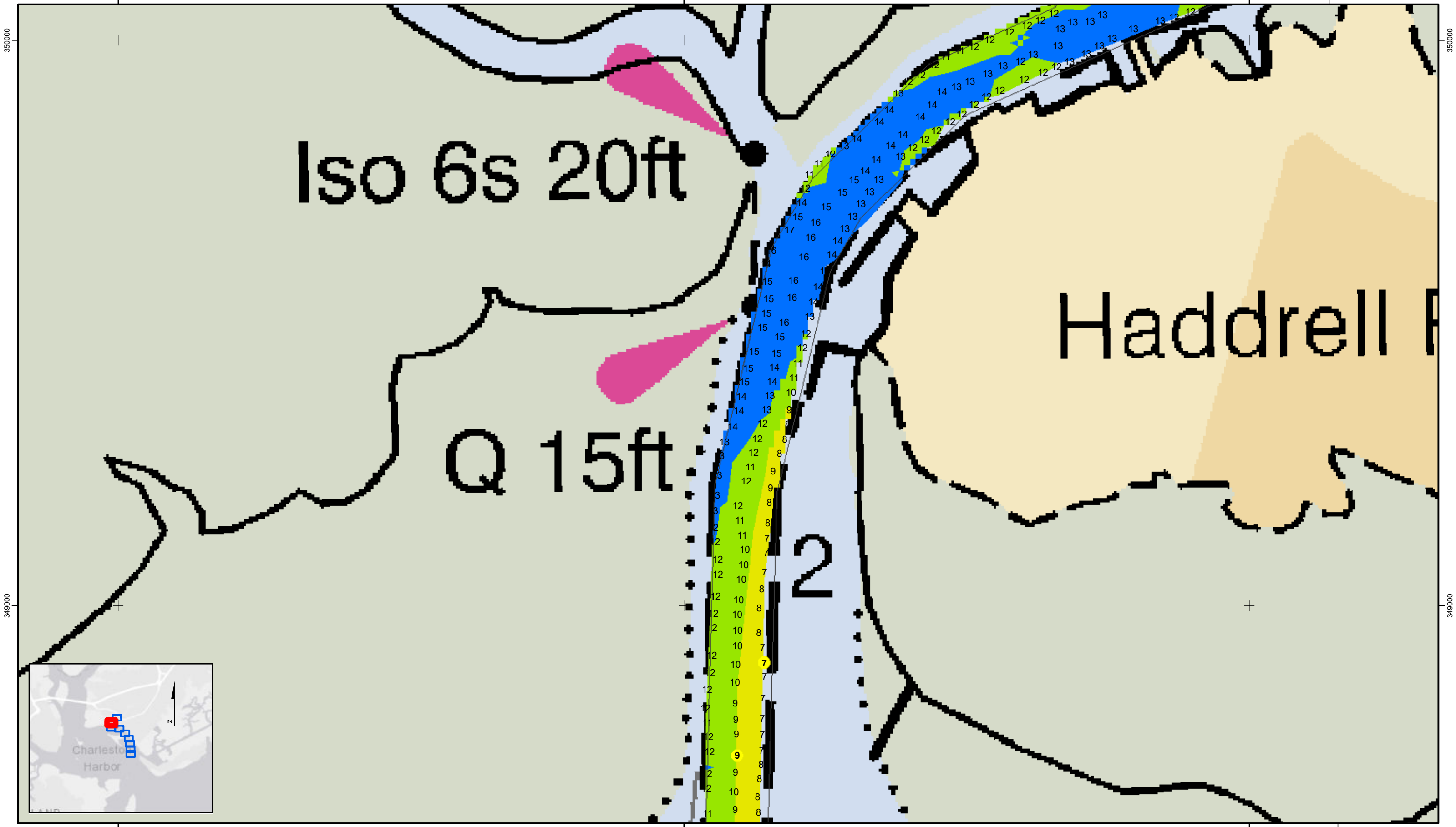
These data sets have been developed from the best available sources. Although efforts have been made to ensure that the database are accurate and reliable, errors and variable conditions originating from physical sources used to develop the data may be reflected in the data supplied.

This product is not intended to be used for navigation. Mariners are encouraged to use all prudent safety measures.





2341000 2342000 2343000 79°53'0"W



2341000 2342000 2343000 79°53'0"W

SHEET REFERENCE NUMBER
C002
Page 8 of 9

Shem Creek
The information depicted on this map represents the results of surveys made on the dates indicated and can only be considered as indicating the general conditions existing at that time.
Concluded on: **5 NOV 2020**
Mount Pleasant, South Carolina

U.S. ARMY ENGINEER DISTRICT CORPS OF ENGINEERS CHARLESTON, SOUTH CAROLINA	Designed By: eHydro Software v3.82	Survey Date: 5 NOV 2020	Production Date: 6 NOV 2020
SPATIAL DATA BRANCH 69A HAGOOD AVE. CHARLESTON, SC 29403 CESAC-GIS@USACE.ARMY.MIL	Reviewed By: CCW	Absolute Scale: 1:1,854	Project Reference Number: CESAC-PRA-0002
	Reference Scale: 1 inch = 155 feet	Survey Type: CONDITION	
	Projection: NAD 1983 StatePlane South Carolina FIPS 3900 Feet		

Shoalest Sounding
● Sounding
Sounding may cover several point areas and is calculated per reach quarter area
*+ indicates sounding above MLLW

USCG Beacon
■ Green
▲ Red
□ White

USCG Buoy
● Green
● Red
● Coast Guard Racon

○ White
○ Yellow
○ USCG Light

Depth in feet

0-3 3 to 6 6 to 9 9 to 12 Greater Than 12

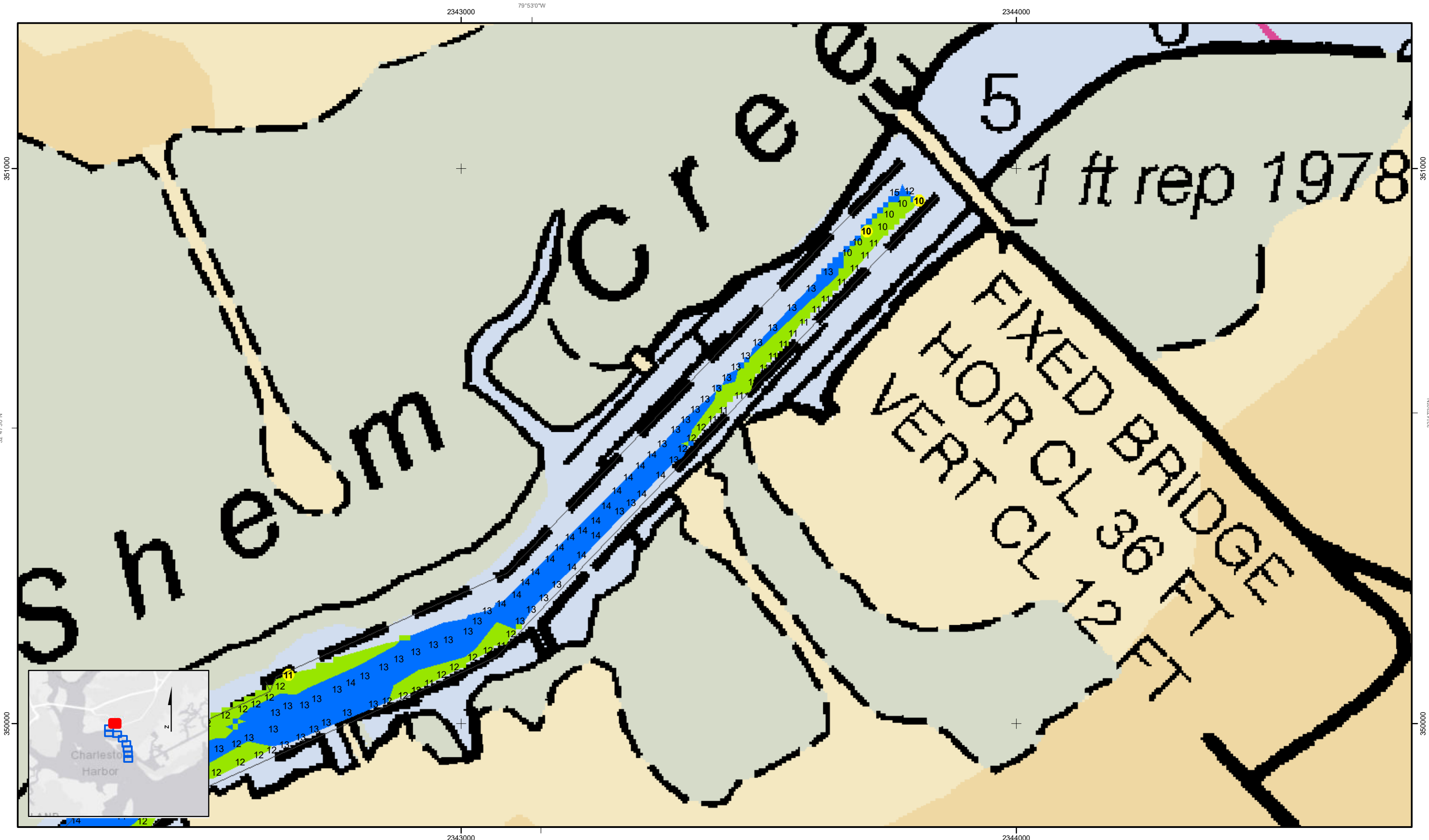
0 250 500 Feet



Production Notes:
1. The information depicted on this product is for plotting purposes only.
2. Vector hydrographic data derived from surveys conducted by the USACE and approved partners.
3. Soundings are in feet and refer to Mean Lower Low Water (MLLW).
4. Raster Background: Panoramaporn Worldview-2 imagery dated 2014.

In no event shall the U.S. Army Corps of Engineers, Charleston District Office, Spatial Data Branch be liable for direct, indirect, incidental, consequential or special damages of any kind, including, but not limited to, loss of anticipated profits or benefits arising out of use of or reliance on the data.
These data sets have been developed from the best available sources. Although efforts have been made to ensure that the datasets are accurate and reliable, errors and variable conditions originating from physical sources used to develop the data may be reflected in the data supplied.
This product is not intended to be used for navigation.
Mariners are encouraged to use all prudent safety measures.





SHEET REFERENCE NUMBER C002 Page 9 of 9	Shem Creek The information depicted on this map represents the results of surveys made on the dates indicated and can only be considered as indicating the general conditions existing at that time. Concluded on: 5 NOV 2020 Mount Pleasant, South Carolina	U.S. ARMY ENGINEER DISTRICT CORPS OF ENGINEERS CHARLESTON, SOUTH CAROLINA SPATIAL DATA BRANCH 69A HAGOOD AVE. CHARLESTON, SC 29403 CESAC-GIS@USACE.ARMY.MIL	Designed By: eHydro Software v3.82 Reviewed By: CCW Reference Scale: 1 inch = 155 feet Projection: NAD 1983 StatePlane South Carolina FIPS 3900 Feet	Survey Date: 5 NOV 2020 Project Reference Number: CESAC-PRA-0002 Survey Type: CONDITION	Production Date: 6 NOV 2020
--	---	---	---	---	---------------------------------------

Shoalest Sounding Sounding may cover several point areas and is calculated per reach quarter area "*" indicates sounding above MLLW	USCG Beacon Green Red White	USCG Buoy Green Red Coast Guard Racon	White Yellow USCG Light	Depth in feet 0-3 3 to 6 6 to 9 9 to 12 Greater Than 12
--	---	---	-------------------------------	---

Production Notes:

- The information depicted on this product is for plotting purposes only.
- Vector hydrographic data derived from surveys conducted by the USACE and approved partners.
- Soundings are in feet and refer to Mean Lower Low Water (MLLW).
- Raster Background: PanSharpened Worldview-2 imagery dated 2014.

In no event shall the U.S. Army Corps of Engineers, Charleston District Office, Spatial Data Branch be liable for direct, indirect, incidental, consequential or special damages of any kind, including, but not limited to, loss of anticipated profits or benefits arising out of use of or reliance on the data.

These data sets have been developed from the best available sources. Although efforts have been made to ensure that the database are accurate and reliable, errors and variable conditions originating from physical sources used to develop the data may be reflected in the data supplied.

This product is not intended to be used for navigation. Mariners are encouraged to use all prudent safety measures.