

342000

342000

32°46'0"N

32°46'0"N

Shem Creek
 The information depicted on this map represents the results of surveys made on the dates indicated and can only be considered as indicating the general conditions existing at that time.
 Concluded on: **28 APR 2021**
 Mount Pleasant, South Carolina

U.S. ARMY ENGINEER DISTRICT
 CORPS OF ENGINEERS
 CHARLESTON, SOUTH CAROLINA

SPATIAL DATA BRANCH
 69A HAGOOD AVE.
 CHARLESTON, SC 29403
 CESAC-GIS@USACE.ARMY.MIL

Designed By: eHydro Software v3.82	Survey Date: 28 APR 2021	Production Date: 3 MAY 2021
Reviewed By: CCW	Absolute Scale: 1:1,800	Project Reference Number: CESAC-PRA-0002
Reference Scale: 1 inch = 150 feet	Survey Type: CONDITION	
Projection: NAD 1983 StatePlane South Carolina FIPS 3900 Feet		

Shoalest Sounding
 Sounding may cover several point areas and is calculated per reach quarter area
 "+" indicates sounding above MLLW

USCG Beacon
 Green ▲
 White □

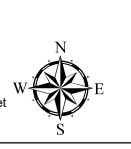
USCG Buoy
 Green ●
 Red ●
 Coast Guard Racon ●

White ●
 Yellow ●
 USCG Light ●

Depth in feet

0-3 3 to 6 6 to 9 9 to 12 Greater Than 12

0 250 500 Feet



Production Notes:

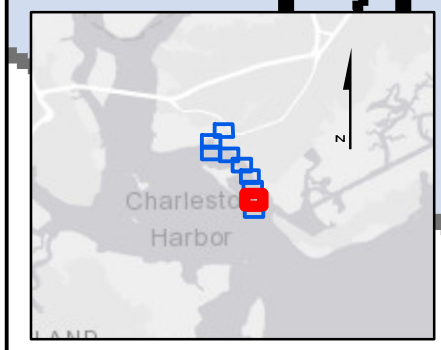
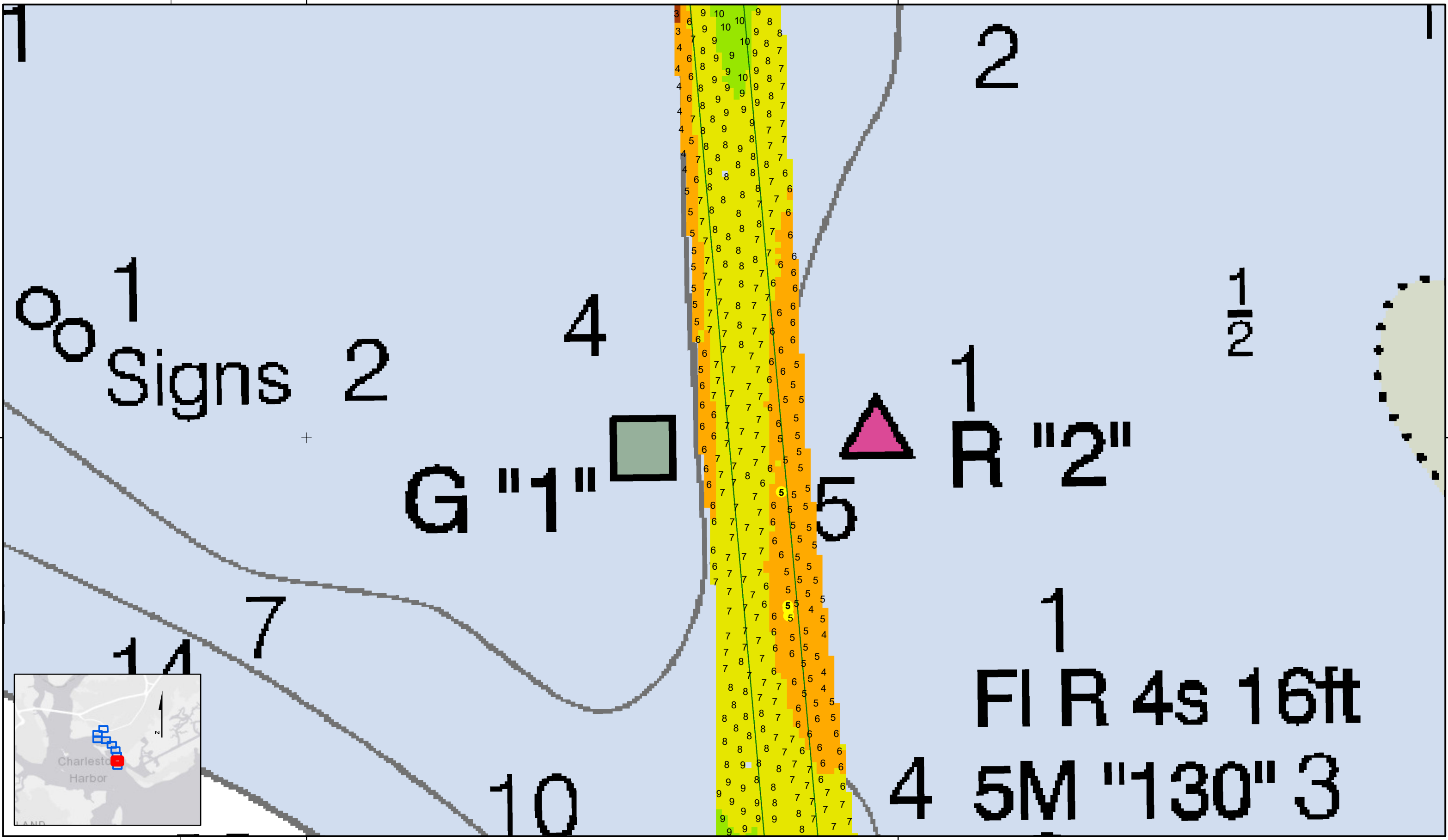
- The information depicted on this product is for plotting purposes only.
- Vector hydrographic data derived from surveys conducted by the USACE and approved partners.
- Soundings are in feet and refer to Mean Lower Low Water (MLLW).
- Raster Background: PanSharpened Worldview-2 imagery dated 2014.

In no event shall the U.S. Army Corps of Engineers, Charleston District Office, Spatial Data Branch be liable for direct, indirect, incidental, consequential or special damages of any kind, including, but not limited to, loss of anticipated profits or benefits arising out of use of or reliance on the data.

These data sets have been developed from the best available sources. Although efforts have been made to ensure that the database are accurate and reliable, errors and variable conditions originating from physical sources used to develop the data may be reflected in the data supplied.

This product is not intended to be used for navigation.
 Mariners are encouraged to use all prudent safety measures.





SHEET REFERENCE NUMBER C002 Page 2 of 9	Shem Creek The information depicted on this map represents the results of surveys made on the dates indicated and can only be considered as indicating the general conditions existing at that time. Concluded on: 28 APR 2021 Mount Pleasant, South Carolina	U.S. ARMY ENGINEER DISTRICT CORPS OF ENGINEERS CHARLESTON, SOUTH CAROLINA SPATIAL DATA BRANCH 69A HAGOOD AVE. CHARLESTON, SC 29403 CESAC-GIS@USACE.ARMY.MIL	Designed By: eHydro Software v3.82 Reviewed By: CCW Reference Scale: 1 inch = 150 feet Projection: NAD 1983 StatePlane South Carolina FIPS 3900 Feet	Survey Date: 28 APR 2021 Project Reference Number: CESAC-PRA-0002 Survey Type: CONDITION	Production Date: 3 MAY 2021
--	--	---	---	---	------------------------------------

Shoalest Sounding ● Sounding <i>Sounding may cover several point areas and is calculated per reach quarter area</i> *+ indicates sounding above MLLW	USCG Beacon ■ Green ▲ Red □ White	USCG Buoy ● Green ● Red ● Coast Guard Racon	White Yellow USCG Light	Depth in feet 0-3 3 to 6 6 to 9 9 to 12 Greater Than 12
--	---	---	-------------------------------	---



Production Notes:

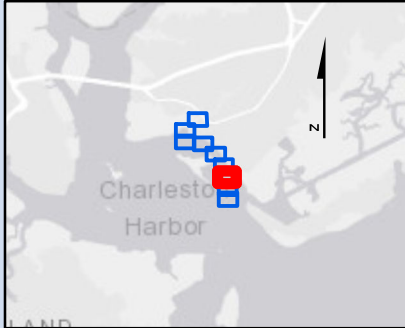
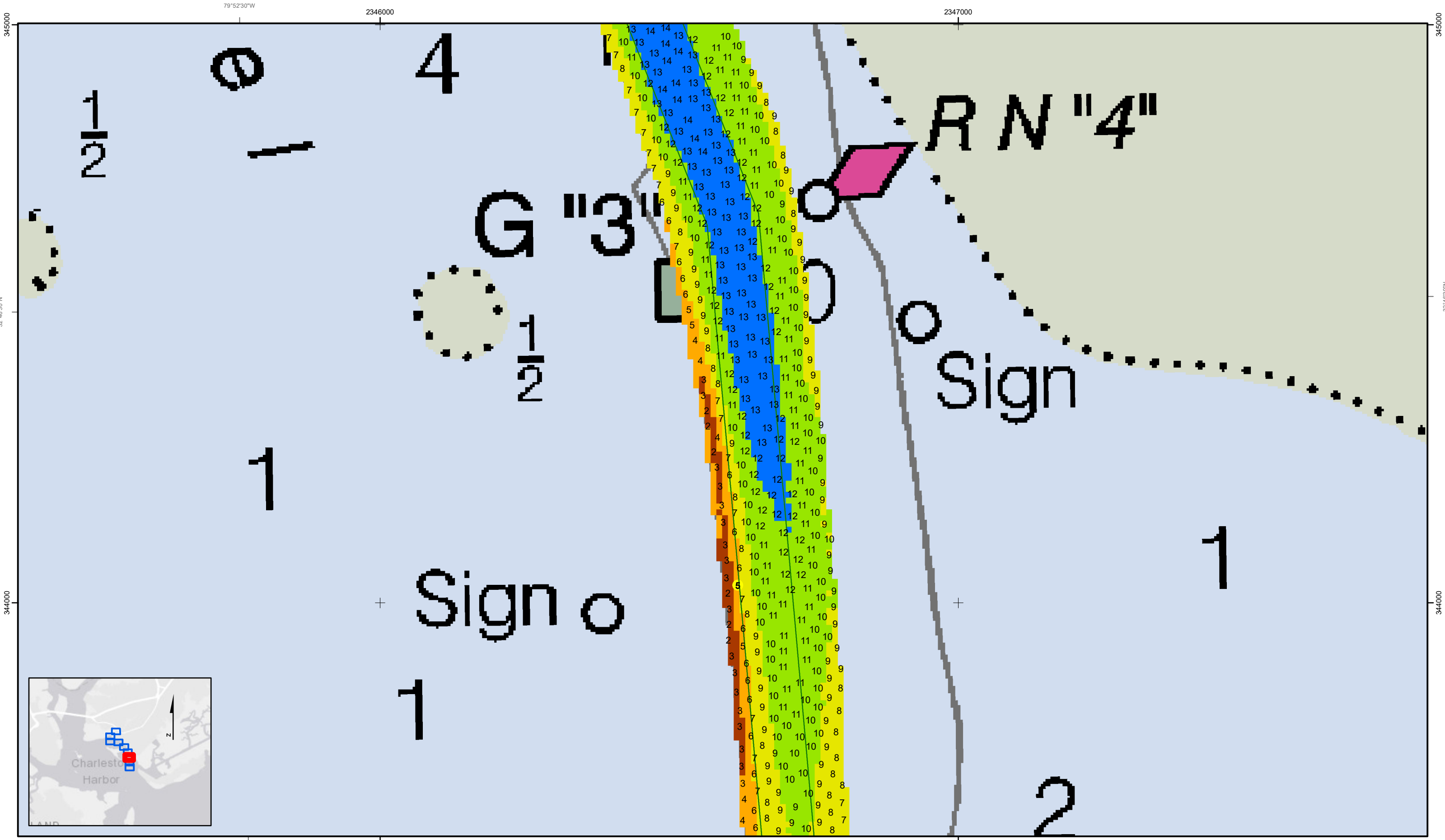
- The information depicted on this product is for plotting purposes only.
- Vector hydrographic data derived from surveys conducted by the USACE and approved partners.
- Soundings are in feet and refer to Mean Lower Low Water (MLLW).
- Raster Background: Panharpened Worldview-2 imagery dated 2014.

In no event shall the U.S. Army Corps of Engineers, Charleston District Office, Spatial Data Branch be liable for direct, indirect, incidental, consequential or special damages of any kind, including, but not limited to, loss of anticipated profits or benefits arising out of use of or reliance on the data.

These data sets have been developed from the best available sources. Although efforts have been made to ensure that the datasets are accurate and reliable, errors and variable conditions originating from physical sources used to develop the data may be reflected in the data supplied.

This product is not intended to be used for navigation. Mariners are encouraged to use all prudent safety measures.





SHEET REFERENCE NUMBER C002 Page 3 of 9	Shem Creek The information depicted on this map represents the results of surveys made on the dates indicated and can only be considered as indicating the general conditions existing at that time. Concluded on: 28 APR 2021 Mount Pleasant, South Carolina		Designed By: eHydro Software v3.8.2	Survey Date: 28 APR 2021	Production Date: 3 MAY 2021	
	U.S. ARMY ENGINEER DISTRICT CORPS OF ENGINEERS CHARLESTON, SOUTH CAROLINA		Reviewed By: CCW	Absolute Scale: 1:1,800	Project Reference Number: CESAC-PRA-0002	
	SPATIAL DATA BRANCH 69A HAGOOD AVE. CHARLESTON, SC 29403 CESAC-GIS@USACE.ARMY.MIL		Reference Scale: 1 inch = 150 feet	Survey Type: CONDITION		
	Projection: NAD 1983 StatePlane South Carolina FIPS 3900 Feet					

Shoalest Sounding ● Sounding <i>Sounding may cover several point areas and is calculated per reach quarter area</i> *+ indicates sounding above MLLW	USCG Beacon ■ Green ▲ Red □ White *+ indicates sounding above MLLW	USCG Buoy ● Green ● Red ● Coast Guard Racon	● White ● Yellow ● USCG Light	Depth in feet ■ 0-3 ■ 3 to 6 ■ 6 to 9 ■ 9 to 12 ■ Greater Than 12
--	---	---	-------------------------------------	---

Production Notes:

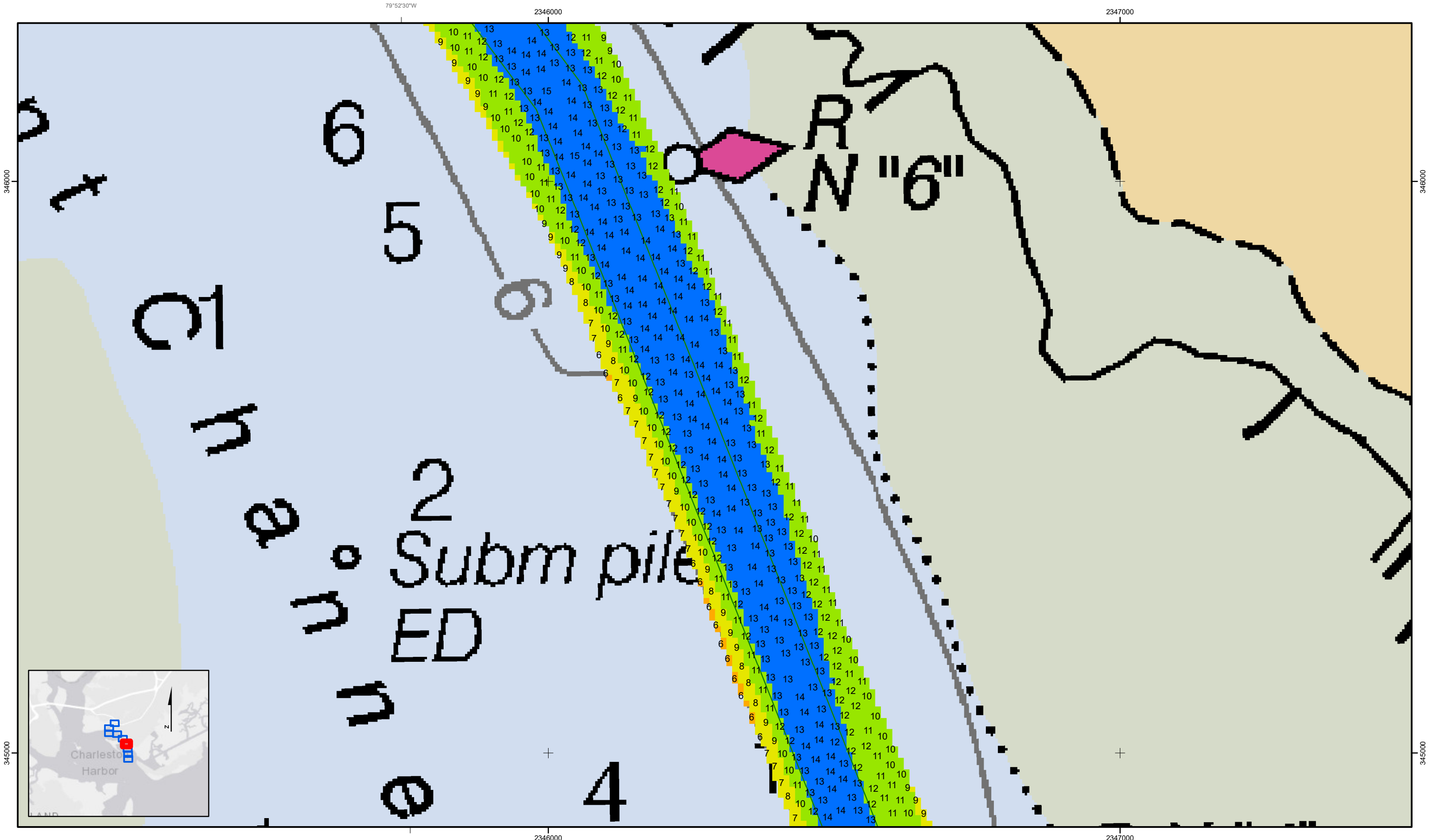
- The information depicted on this product is for plotting purposes only.
- Vector hydrographic data derived from surveys conducted by the USACE and approved partners.
- Soundings are in feet and refer to Mean Lower Low Water (MLLW).
- Raster Background: PanSharpened Worldview-2 imagery dated 2014.

In no event shall the U.S. Army Corps of Engineers, Charleston District Office, Spatial Data Branch be liable for direct, indirect, incidental, consequential or special damages of any kind, including, but not limited to, loss of anticipated profits or benefits arising out of use of or reliance on the data.

These data sets have been developed from the best available sources. Although efforts have been made to ensure that the datasets are accurate and reliable, errors and variable conditions originating from physical sources used to develop the data may be reflected in the data supplied.

This product is not intended to be used for navigation.
Mariners are encouraged to use all prudent safety measures.

U.S. Army Corps of Engineers
Charleston District



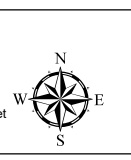
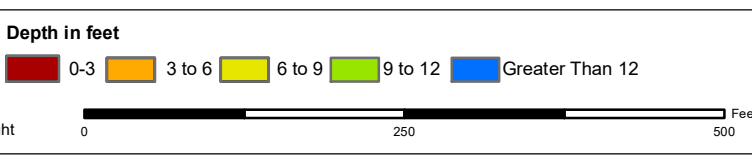
Shem Creek
 The information depicted on this map represents the results of surveys made on the dates indicated and can only be considered as indicating the general conditions existing at that time.
 Concluded on: **28 APR 2021**
 Mount Pleasant, South Carolina

U.S. ARMY ENGINEER DISTRICT
 CORPS OF ENGINEERS
 CHARLESTON, SOUTH CAROLINA
 SPATIAL DATA BRANCH
 69A HAGOOD AVE.
 CHARLESTON, SC 29403
 CESAC-GIS@USACE.ARMY.MIL

Designed By: eHydro Software v3.82	Survey Date: 28 APR 2021	Production Date: 3 MAY 2021
Reviewed By: CCW	Absolute Scale: 1:1,800	Project Reference Number: CESAC-PRA-0002
Reference Scale: 1 inch = 150 feet	Survey Type: CONDITION	
Projection: NAD 1983 StatePlane South Carolina FIPS 3900 Feet		

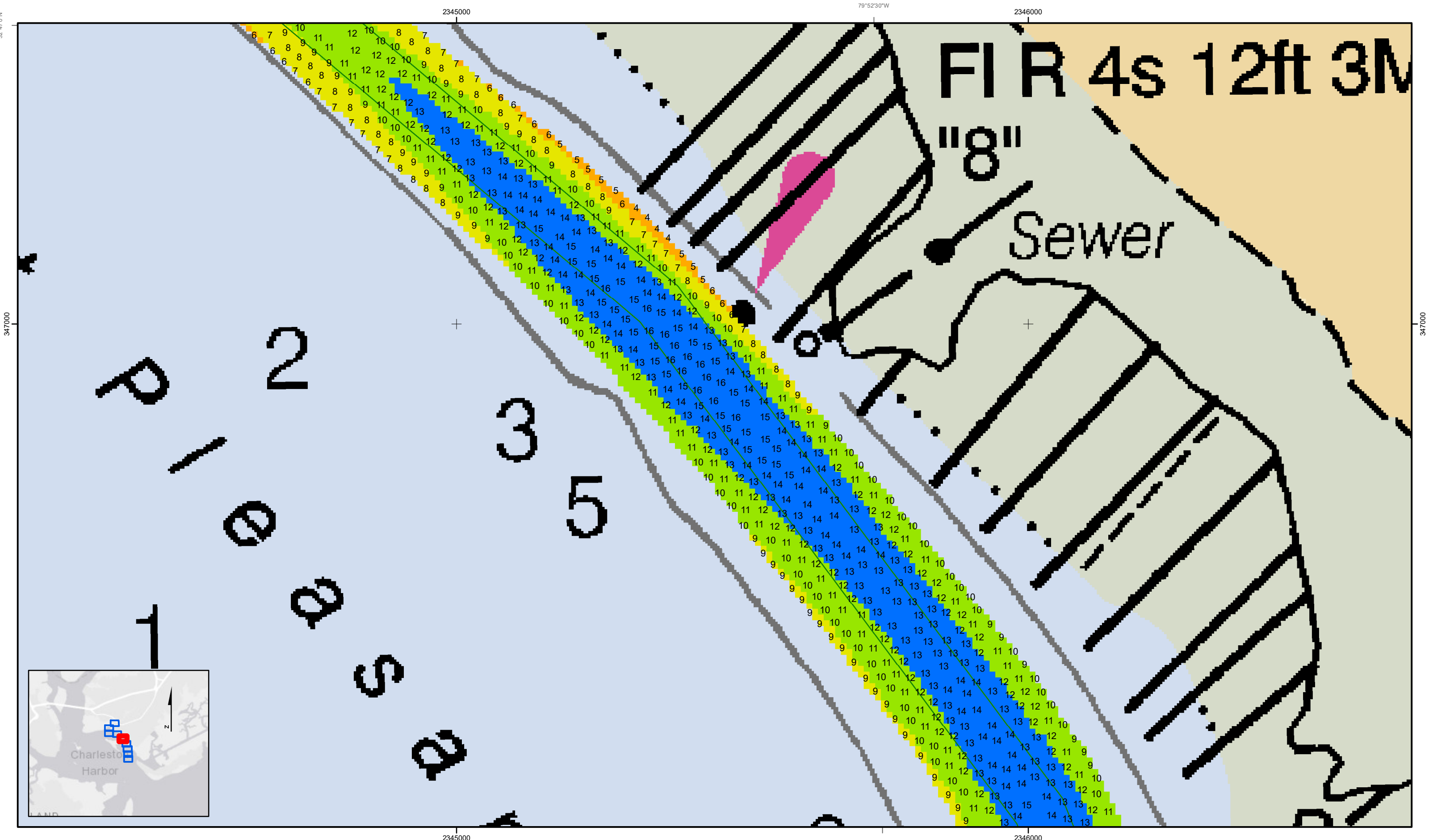
Shoalest Sounding
 Sounding may cover several point areas and is calculated per reach quarter area
 "+ " indicates sounding above MLLW

● Sounding	■ Green	● Green	○ White
▲ Red	▲ Red	● Red	○ White
● Coast Guard Racon	● Coast Guard Racon	● USCG Light	● USCG Light



Production Notes:
 1. The information depicted on this product is for plotting purposes only.
 2. Vector hydrographic data derived from surveys conducted by the USACE and approved partners.
 3. Soundings are in feet and refer to Mean Lower Low Water (MLLW).
 4. Raster Background: PanSharpened Worldview-2 imagery dated 2014.
 In no event shall the U.S. Army Corps of Engineers, Charleston District Office, Spatial Data Branch be liable for direct, indirect, incidental, consequential or special damages of any kind, including, but not limited to, loss of anticipated profits or benefits arising out of use of or reliance on the data.
 These data sets have been developed from the best available sources. Although efforts have been made to ensure that the datasets are accurate and reliable, errors and variable conditions originating from physical sources used to develop the data may be reflected in the data supplied.
 This product is not intended to be used for navigation.
 Mariners are encouraged to use all prudent safety measures.





Shem Creek
 The information depicted on this map represents the results of surveys made on the dates indicated and can only be considered as indicating the general conditions existing at that time.
 Concluded on: **28 APR 2021**
 Mount Pleasant, South Carolina

U.S. ARMY ENGINEER DISTRICT
 CORPS OF ENGINEERS
 CHARLESTON, SOUTH CAROLINA
 SPATIAL DATA BRANCH
 69A HAGOOD AVE.
 CHARLESTON, SC 29403
 CESAC-GIS@USACE.ARMY.MIL

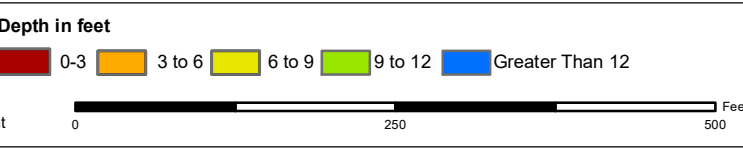
Designed By: eHydro Software v3.82	Survey Date: 28 APR 2021	Production Date: 3 MAY 2021
Reviewed By: CCW	Absolute Scale: 1:1,800	Project Reference Number: CESAC-PRA-0002
Reference Scale: 1 inch = 150 feet	Survey Type: CONDITION	
Projection: NAD 1983 StatePlane South Carolina FIPS 3900 Feet		

Shoalest Sounding
 Sounding may cover several point areas and is calculated per reach quarter area
 "+" indicates sounding above MLLW

USCG Beacon
 Green
 Red
 White

USCG Buoy
 Green
 Red
 Coast Guard Racon

USCG Light
 White
 Yellow



Production Notes:

- The information depicted on this product is for plotting purposes only.
- Vector hydrographic data derived from surveys conducted by the USACE and approved partners.
- Soundings are in feet and refer to Mean Lower Low Water (MLLW).
- Raster Background: Panaharpenn Worldview-2 imagery dated 2014.

In no event shall the U.S. Army Corps of Engineers, Charleston District Office, Spatial Data Branch be liable for direct, indirect, incidental, consequential or special damages of any kind, including, but not limited to, loss of anticipated profits or benefits arising out of use of or reliance on the data.
 These data sets have been developed from the best available sources. Although efforts have been made to ensure that the datasets are accurate and reliable, errors and variable conditions originating from physical sources used to develop the data may be reflected in the data supplied.
 This product is not intended to be used for navigation.
 Mariners are encouraged to use all prudent safety measures.



2343000

79°53'0"W

2344000

2345000

12ft

R "14"

R "12"

R "10"

MAY 2015

2

3

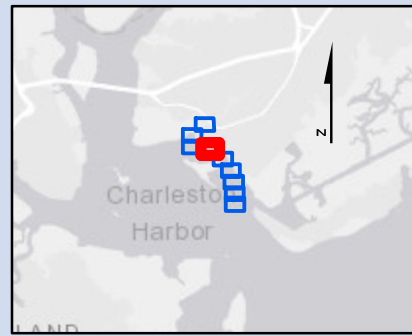
2

M

O

4

U



2343000

79°53'0"W

2344000

2345000

SHEET REFERENCE NUMBER C002 Page 6 of 9	Shem Creek The information depicted on this map represents the results of surveys made on the dates indicated and can only be considered as indicating the general conditions existing at that time. Concluded on: 28 APR 2021 Mount Pleasant, South Carolina	U.S. ARMY ENGINEER DISTRICT CORPS OF ENGINEERS CHARLESTON, SOUTH CAROLINA SPATIAL DATA BRANCH 69A HAGOOD AVE. CHARLESTON, SC 29403 CESAC-GIS@USACE.ARMY.MIL	Designed By: eHydro Software v3.82 Reviewed By: CCW Reference Scale: 1 inch = 150 feet Projection: NAD 1983 StatePlane South Carolina FIPS 3900 Feet	Survey Date: 28 APR 2021 Project Reference Number: CESAC-PRA-0002 Survey Type: CONDITION	Production Date: 3 MAY 2021
--	--	---	---	--	---------------------------------------

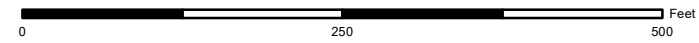
Shoalest Sounding

● Sounding
 Sounding may cover several point areas and is calculated per reach quarter area
 *+ indicates sounding above MLLW

USCG Beacon	USCG Buoy
● Green	● Green
● Red	● Red
● White	● Coast Guard Racon
● White	● USCG Light

Depth in feet

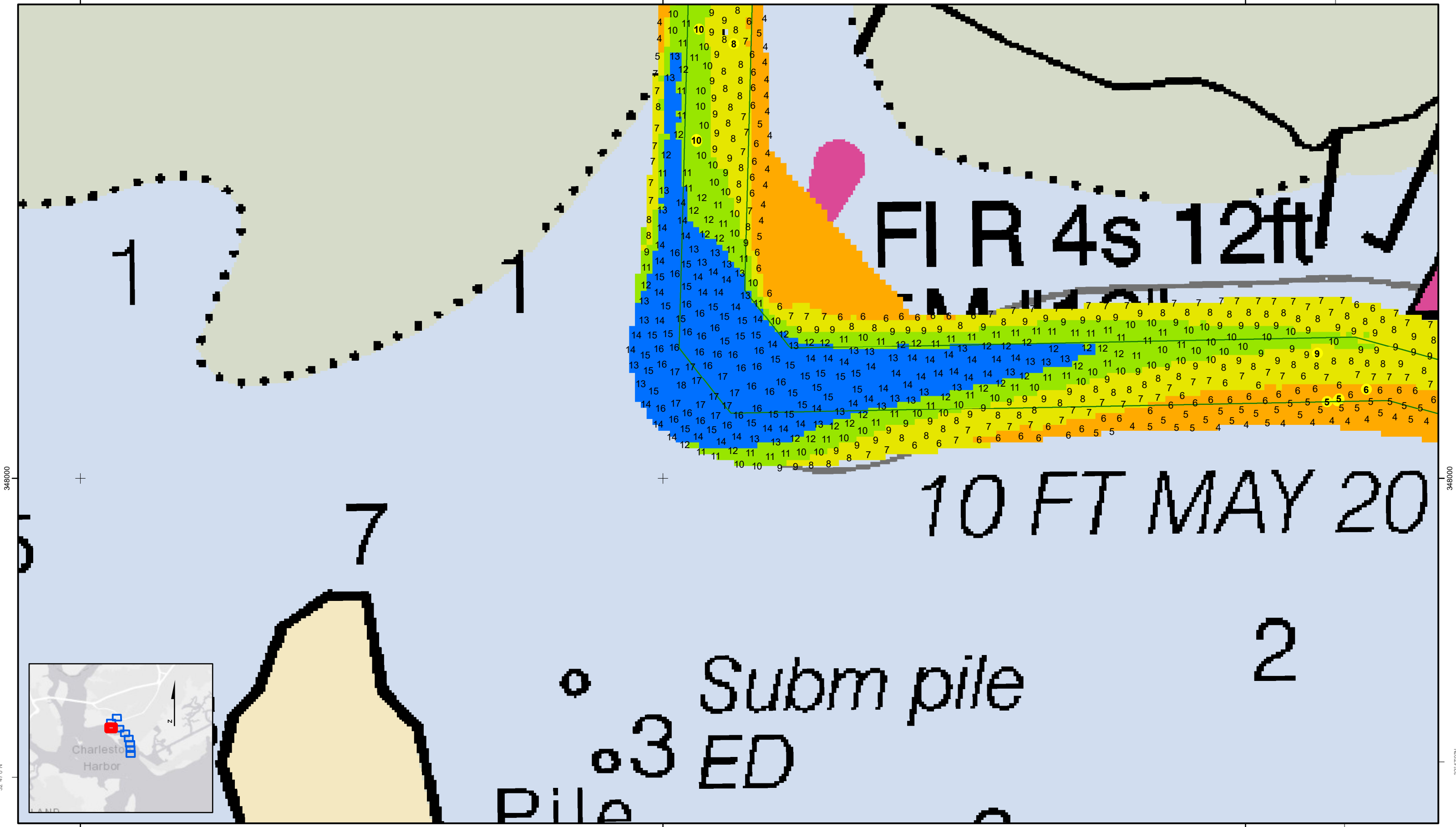
● White	● Yellow	● Green	● Red	● Blue
0-3	3 to 6	6 to 9	9 to 12	Greater Than 12



Production Notes:

1. The information depicted on this product is for plotting purposes only.
 2. Vector hydrographic data derived from surveys conducted by the USACE and approved partners.
 3. Soundings are in feet and refer to Mean Lower Low Water (MLLW).
 4. Raster Background: Panharperned Worldview-2 imagery dated 2014.
 In no event shall the U.S. Army Corps of Engineers, Charleston District Office, Spatial Data Branch be liable for direct, indirect, incidental, consequential or special damages of any kind, including, but not limited to, loss of anticipated profits or benefits arising out of use of or reliance on the data.
 These data sets have been developed from the best available sources. Although efforts have been made to ensure that the datasets are accurate and reliable, errors and variable conditions originating from physical sources used to develop the data may be reflected in the data supplied.
 This product is not intended to be used for navigation.
 Mariners are encouraged to use all prudent safety measures.





348000
32°47'0"N

348000
32°47'0"N

Shem Creek
The information depicted on this map represents the results of surveys made on the dates indicated and can only be considered as indicating the general conditions existing at that time.
Concluded on: **28 APR 2021**
Mount Pleasant, South Carolina

U.S. ARMY ENGINEER DISTRICT CORPS OF ENGINEERS CHARLESTON, SOUTH CAROLINA	Designed By: eHydro Software v3.82	Survey Date: 28 APR 2021	Production Date: 3 MAY 2021
SPATIAL DATA BRANCH 69A HAGOOD AVE. CHARLESTON, SC 29403 CESAC-GIS@USACE.ARMY.MIL	Reviewed By: CCW	Absolute Scale: 1:1,800	Project Reference Number: CESAC-PRA-0002
	Reference Scale: 1 inch = 150 feet	Survey Type: CONDITION	
	Projection: NAD 1983 StatePlane South Carolina FIPS 3900 Feet		

Shoalest Sounding
● Sounding
Sounding may cover several point areas and is calculated per reach quarter area
*+ indicates sounding above MLLW

USCG Beacon
■ Green
▲ Red
□ White

USCG Buoy
● Green
● Red
● Coast Guard Racon

○ White
○ Yellow
○ USCG Light

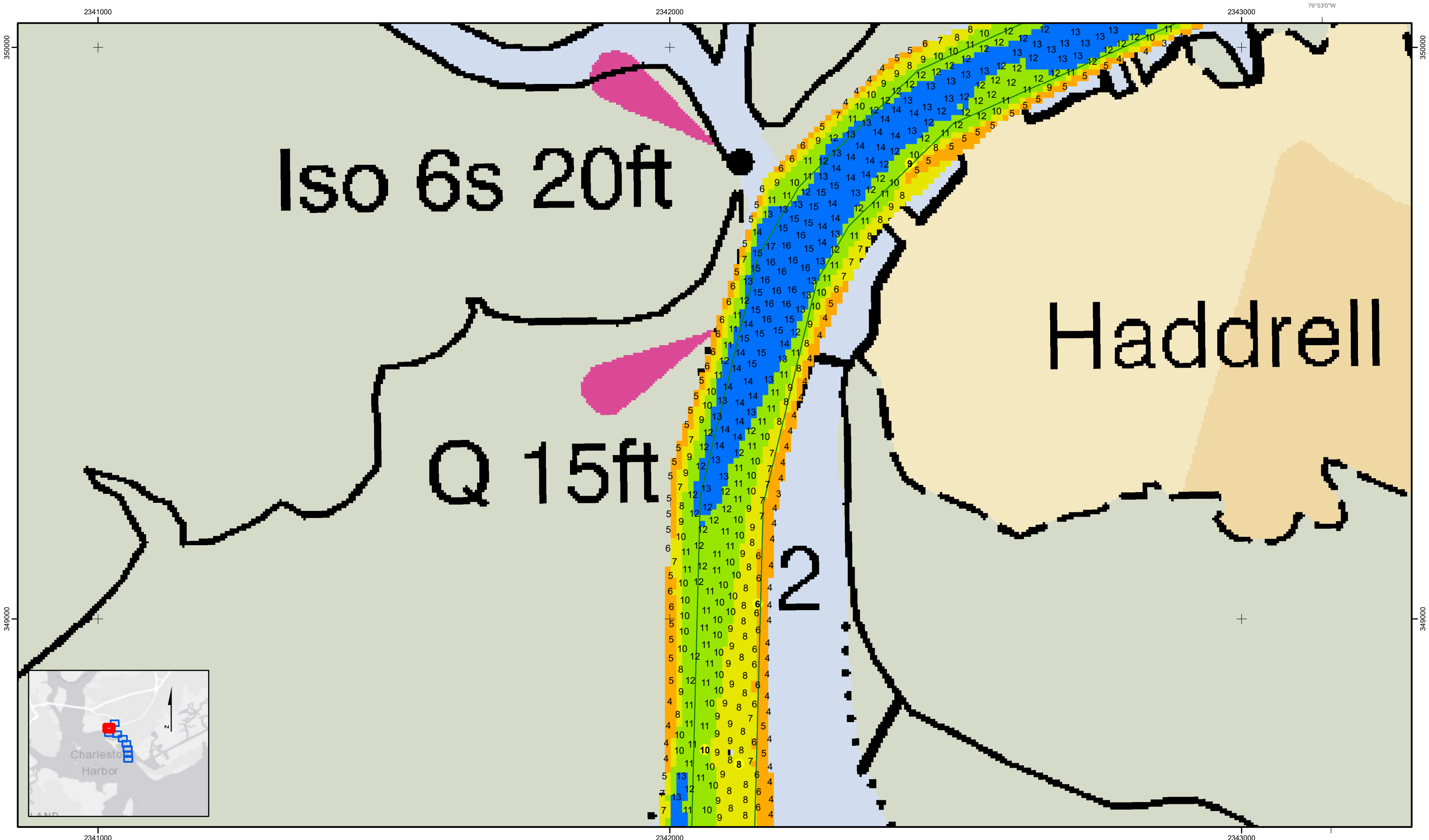
Depth in feet
■ 0-3 ■ 3 to 6 ■ 6 to 9 ■ 9 to 12 ■ Greater Than 12

0 250 500 Feet

Production Notes:
1. The information depicted on this product is for plotting purposes only.
2. Vector hydrographic data derived from surveys conducted by the USACE and approved partners. These data sets have been developed from the best available sources. Although efforts have been made to ensure that the datasets are accurate and reliable, errors and variable conditions originating from physical sources used to develop the data may be reflected in the data supplied.
3. Soundings are in feet and refer to Mean Lower Low Water (MLLW).
4. Raster Background: PanSharpened Worldview-2 imagery dated 2014.

In no event shall the U.S. Army Corps of Engineers, Charleston District Office, Spatial Data Branch be liable for direct, indirect, incidental, consequential or special damages of any kind, including, but not limited to, loss of anticipated profits or benefits arising out of use of or reliance on the data.
This product is not intended to be used for navigation. Mariners are encouraged to use all prudent safety measures.

U.S. Army Corps of Engineers
Charleston District



Shem Creek
 The information depicted on this map represents the results of surveys made on the dates indicated and can only be considered as indicating the general conditions existing at that time.
 Concluded on: **28 APR 2021**
 Mount Pleasant, South Carolina

U.S. ARMY ENGINEER DISTRICT CORPS OF ENGINEERS CHARLESTON, SOUTH CAROLINA	Designed By: eHydro Software v3.82	Survey Date: 28 APR 2021	Production Date: 3 MAY 2021
SPATIAL DATA BRANCH 69A HAGOOD AVE. CHARLESTON, SC 29403 CESAC-GIS@USACE.ARMY.MIL	Reviewed By: CCW	Absolute Scale: 1:1,800	Project Reference Number: CESAC-PRA-0002
	Reference Scale: 1 inch = 150 feet	Survey Type: CONDITION	
	Projection: NAD 1983 StatePlane South Carolina FIPS 3900 Feet		

Shoalest Sounding
 Sounding may cover several point areas and is calculated per reach quarter area
 "+" indicates sounding above MLLW

USCG Beacon
 Green
 Red
 White

USCG Buoy
 Green
 Red
 Coast Guard Racon

White
 Yellow
 USCG Light

Depth in feet
 0-3
 3 to 6
 6 to 9
 9 to 12
 Greater Than 12

0 250 500 Feet

Production Notes:

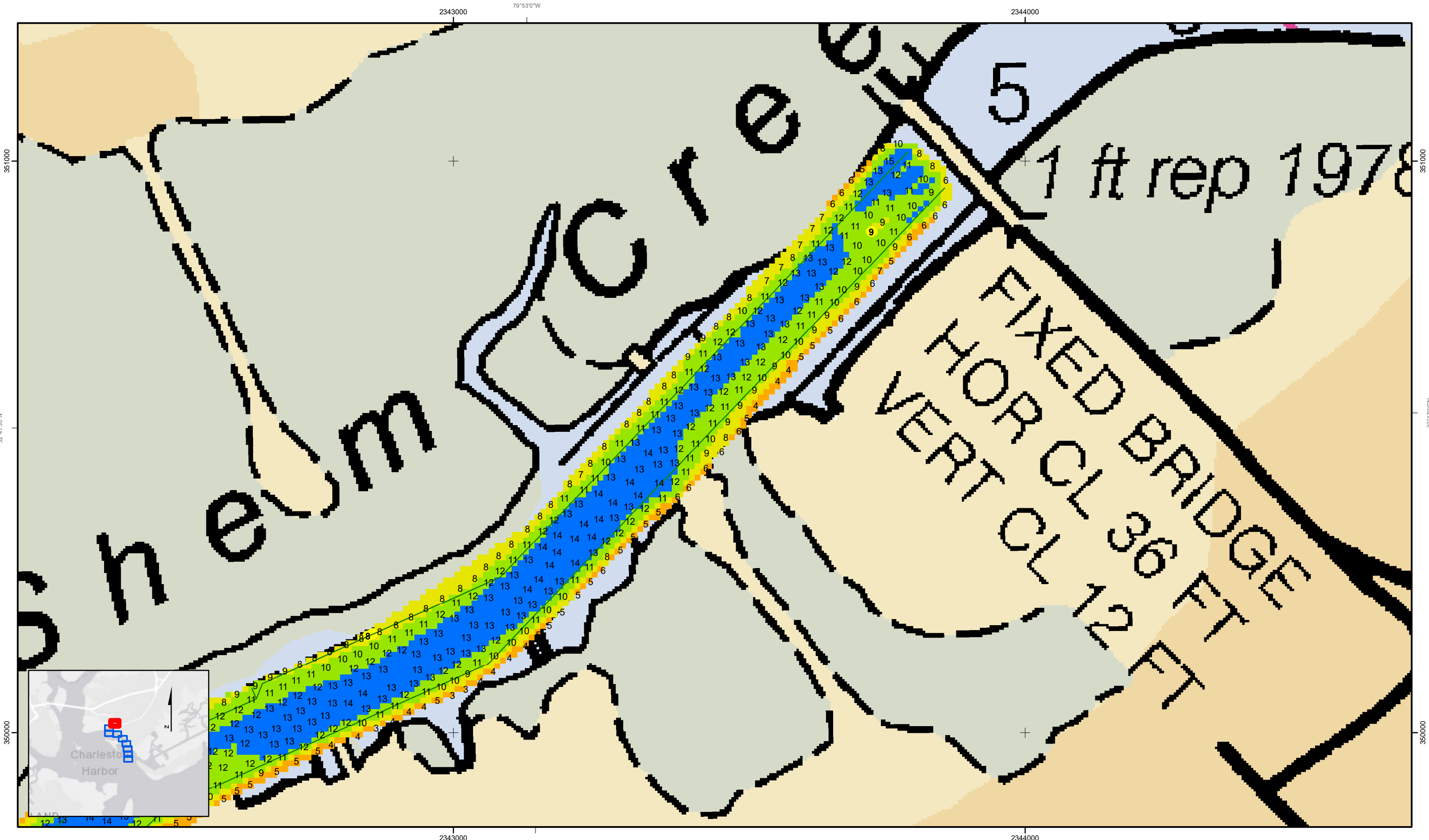
- The information depicted on this product is for plotting purposes only.
- Vector hydrographic data derived from surveys conducted by the USACE and approved partners.
- Soundings are in feet and refer to Mean Lower Low Water (MLLW).
- Raster Background: PanSharpened Worldview-2 imagery dated 2014.

In no event shall the U.S. Army Corps of Engineers, Charleston District Office, Spatial Data Branch be liable for direct, indirect, incidental, consequential or special damages of any kind, including, but not limited to, loss of anticipated profits or benefits arising out of use of or reliance on the data.

These data sets have been developed from the best available sources. Although efforts have been made to ensure that the datasets are accurate and reliable, errors and variable conditions originating from physical sources used to develop the data may be reflected in the data supplied.

This product is not intended to be used for navigation. Mariners are encouraged to use all prudent safety measures.

U.S. Army Corps of Engineers
 Charleston District



Shem Creek
 The information depicted on this map represents the results of surveys made on the dates indicated and can only be considered as indicating the general conditions existing at that time.
 Concluded on: **28 APR 2021**
 Mount Pleasant, South Carolina

U.S. ARMY ENGINEER DISTRICT
 CORPS OF ENGINEERS
 CHARLESTON, SOUTH CAROLINA
 SPATIAL DATA BRANCH
 69A HAGOOD AVE.
 CHARLESTON, SC 29403
 CESAC-GIS@USACE.ARMY.MIL

Designed By: eHydro Software v3.82	Survey Date: 28 APR 2021	Production Date: 3 MAY 2021
Reviewed By: CCW	Absolute Scale: 1:1,800	Project Reference Number: CESAC-PRA-0002
Reference Scale: 1 inch = 150 feet	Survey Type: CONDITION	
Projection: NAD 1983 StatePlane South Carolina FIPS 3900 Feet		

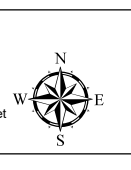
Shoalest Sounding
 Sounding may cover several point areas and is calculated per reach quarter area
 "+" indicates sounding above MLLW

Sounding	USCG Beacon	USCG Buoy	White
Sounding	USCG Beacon	USCG Buoy	Yellow
Sounding	Coast Guard Racon	USCG Light	

Depth in feet

0-3	3 to 6	6 to 9	9 to 12	Greater Than 12
-----	--------	--------	---------	-----------------

0 250 500 Feet



Production Notes:

- The information depicted on this product is for plotting purposes only.
- Vector hydrographic data derived from surveys conducted by the USACE and approved partners.
- Soundings are in feet and refer to Mean Lower Low Water (MLLW).
- Raster Background: PanSharpened Worldview-2 imagery dated 2014.

In no event shall the U.S. Army Corps of Engineers, Charleston District Office, Spatial Data Branch be liable for direct, indirect, incidental, consequential or special damages of any kind, including, but not limited to, loss of anticipated profits or benefits arising out of use of or reliance on the data.

These data sets have been developed from the best available sources. Although efforts have been made to ensure that the datasets are accurate and reliable, errors and variable conditions originating from physical sources used to develop the data may be reflected in the data supplied.

This product is not intended to be used for navigation. Mariners are encouraged to use all prudent safety measures.

