

342000

342000

32°46'00\"/>

32°46'00\"/>



SHEET REFERENCE NUMBER <b>C002</b> Page 1 of 9	<b>Shem Creek</b> The information depicted on this map represents the results of surveys made on the dates indicated and can only be considered as indicating the general conditions existing at that time. Concluded on: <b>02 DEC 2021</b> Mount Pleasant, South Carolina		Designed By: <b>eHydro Software v3.82</b>	Survey Date: <b>02 DEC 2021</b>	Production Date: <b>07 DEC 2021</b>	
	U.S. ARMY ENGINEER DISTRICT CORPS OF ENGINEERS CHARLESTON, SOUTH CAROLINA		Reviewed By: <b>CCW</b>	Absolute Scale: <b>1:1,800</b>	Project Reference Number: <b>CESAC-PRA-0002</b>	
	USACE CHARLESTON 69A HAGOOD AVE CHARLESTON, SC 29403 843-329-8000		Reference Scale: <b>1 inch = 150 feet</b>	Survey Type: <b>CONDITION</b>		
	Projection: <b>NAD 1983 StatePlane South Carolina FIPS 3900 Feet</b>					

<b>Shoalest Sounding</b> ● Sounding Sounding may cover several point areas and is calculated per reach quarter area "+ " indicates sounding above MLLW	<b>USCG Beacon</b> ■ Green ▲ Red □ White	<b>USCG Buoy</b> ● Green ● Red ● Coast Guard Racon	● White ● Yellow ● USCG Light	<b>Depth in feet</b> 0-3 3 to 6 6 to 9 9 to 12 Greater Than 12
---	---	---	-------------------------------------	---


**Production Notes:**

- The information depicted on this product is for plotting purposes only.
- Vector hydrographic data derived from surveys conducted by the USACE and approved partners.
- Soundings are in feet and refer to Mean Lower Low Water (MLLW).
- Raster Background: PanSharpened Worldview-2 imagery dated 2014.

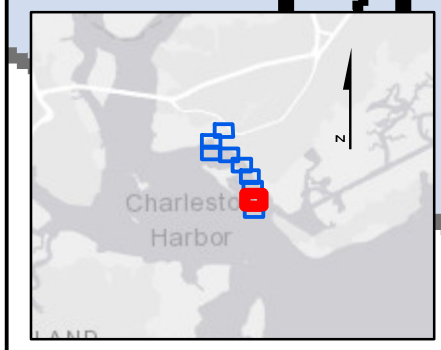
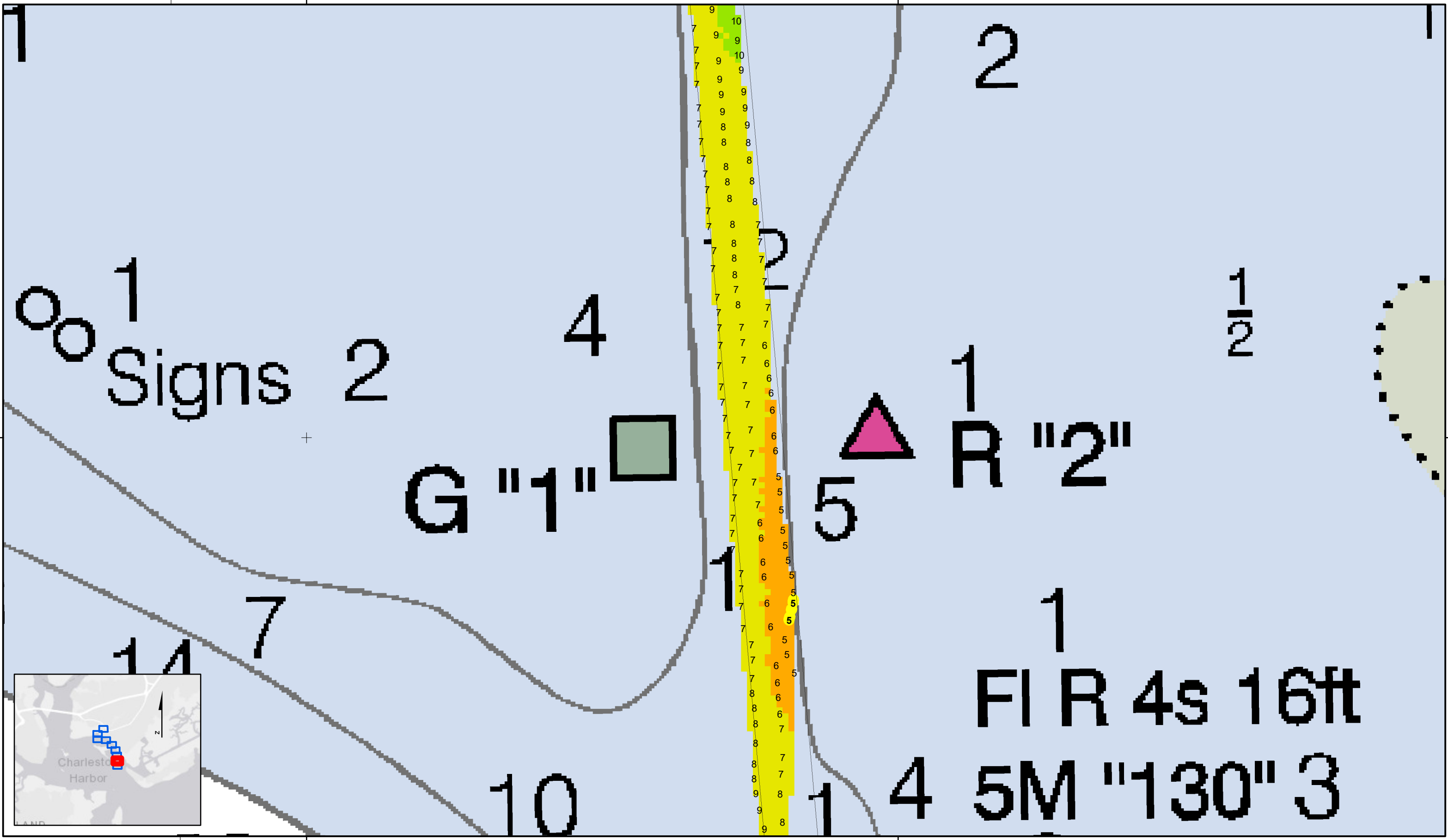
In no event shall the U.S. Army Corps of Engineers, Charleston District Office, Navigation Branch be liable for direct, indirect, incidental, consequential or special damages of any kind, including, but not limited to, loss of anticipated profits or benefits arising out of use of or reliance on the data.

These data sets have been developed from the best available sources. Although efforts have been made to ensure that the database are accurate and reliable, errors and variable conditions originating from physical sources used to develop the data may be reflected in the data supplied.

This product is not intended to be used for navigation. Mariners are encouraged to use all prudent safety measures.



U.S. Army Corps of Engineers  
Charleston District



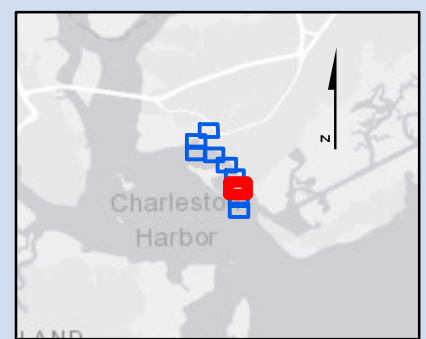
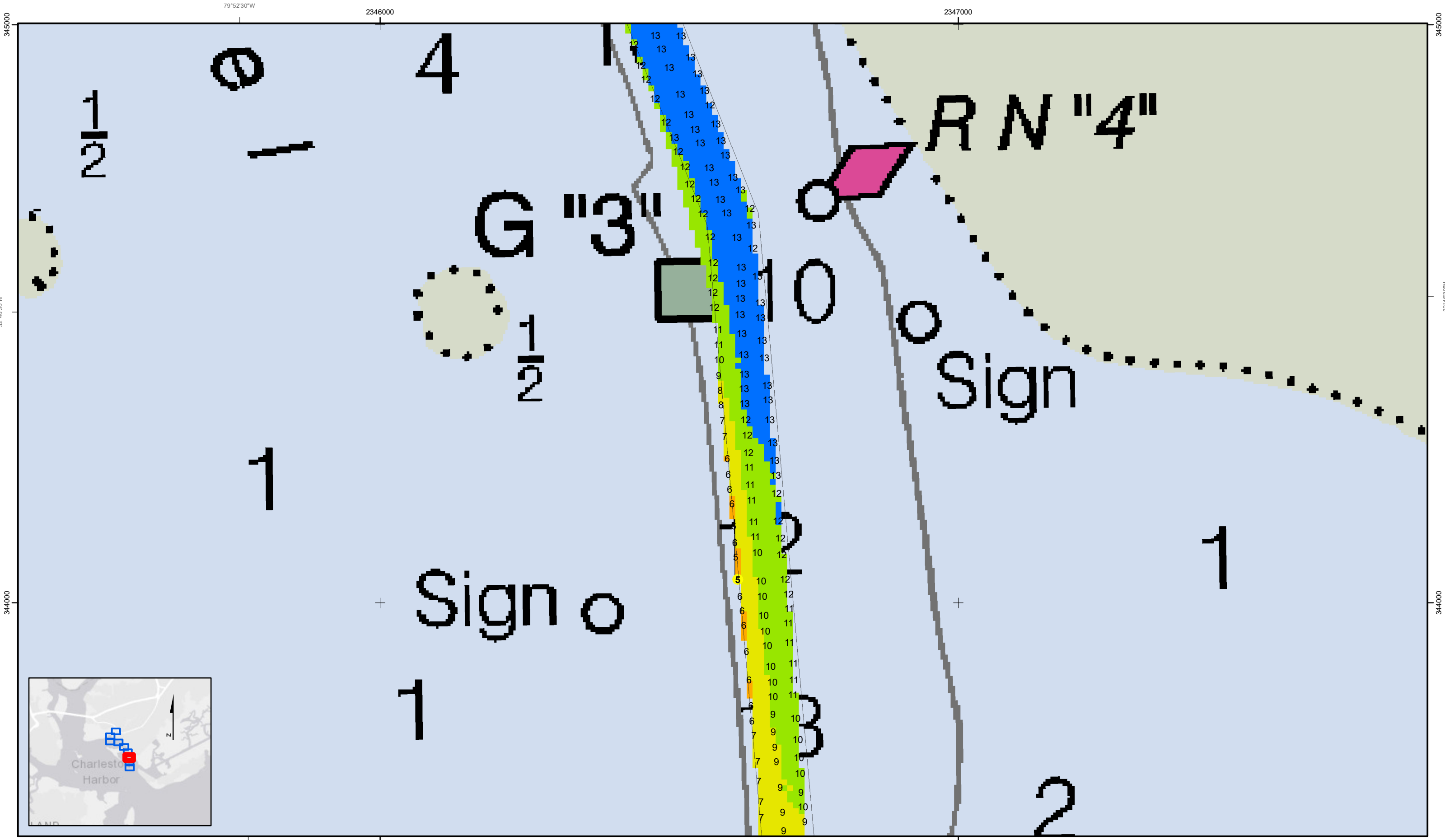
SHEET REFERENCE NUMBER <b>C002</b> Page 2 of 9	<b>Shem Creek</b> The information depicted on this map represents the results of surveys made on the dates indicated and can only be considered as indicating the general conditions existing at that time. Concluded on: <b>02 DEC 2021</b> Mount Pleasant, South Carolina	U.S. ARMY ENGINEER DISTRICT CORPS OF ENGINEERS CHARLESTON, SOUTH CAROLINA  USACE CHARLESTON 69A HAGOOD AVE CHARLESTON, SC 29403 843-329-8000	Designed By: <b>eHydro Software v3.82</b> Reviewed By: <b>CCW</b> Reference Scale: <b>1 inch = 150 feet</b> Projection: <b>NAD 1983 StatePlane South Carolina FIPS 3900 Feet</b>	Survey Date: <b>02 DEC 2021</b> Project Reference Number: <b>CESAC-PRA-0002</b> Survey Type: <b>CONDITION</b>	Production Date: <b>07 DEC 2021</b>
--	--	---	---	--	--

<b>Shoalest Sounding</b> ● Sounding <i>Sounding may cover several point areas and is calculated per reach quarter area</i> *+ indicates sounding above MLLW	<b>USCG Beacon</b> ■ Green ▲ Red □ White	<b>USCG Buoy</b> ● Green ● Red ● Coast Guard Racon	● White ● Yellow ● USCG Light	<b>Depth in feet</b> 0-3   3 to 6   6 to 9   9 to 12   Greater Than 12
--	---	---	-------------------------------------	---

Production Notes:  
 1. The information depicted on this product is for plotting purposes only.  
 2. Vector hydrographic data derived from surveys conducted by the USACE and approved partners.  
 3. Soundings are in feet and refer to Mean Lower Low Water (MLLW).  
 4. Raster Background: Panosarpened Worldview-2 imagery dated 2014.

In no event shall the U.S. Army Corps of Engineers, Charleston District Office, Navigation Branch be liable for direct, indirect, incidental, consequential or special damages of any kind, including, but not limited to, loss of anticipated profits or benefits arising out of use of or reliance on the data.  
 These data sets have been developed from the best available sources. Although efforts have been made to ensure that the datasets are accurate and reliable, errors and variable conditions originating from physical sources used to develop the data may be reflected in the data supplied.  
 This product is not intended to be used for navigation.  
 Mariners are encouraged to use all prudent safety measures.

U.S. Army Corps of Engineers  
 Charleston District



SHEET  
REFERENCE  
NUMBER  
C002  
Page 3 of 9

**Shem Creek**  
The information depicted on this map represents the results of surveys made on the dates indicated and can only be considered as indicating the general conditions existing at that time.  
Concluded on: **02 DEC 2021**  
Mount Pleasant, South Carolina

U.S. ARMY ENGINEER DISTRICT  
CORPS OF ENGINEERS  
CHARLESTON, SOUTH CAROLINA  
USACE CHARLESTON  
69A HAGOOD AVE  
CHARLESTON, SC 29403  
843-329-8000

Designed By: <b>eHydro Software v3.82</b>	Survey Date: <b>02 DEC 2021</b>	Production Date: <b>07 DEC 2021</b>
Reviewed By: <b>CCW</b>	Absolute Scale: <b>1:1,800</b>	Project Reference Number: <b>CESAC-PRA-0002</b>
Reference Scale: <b>1 inch = 150 feet</b>	Survey Type: <b>CONDITION</b>	
Projection: <b>NAD 1983 StatePlane South Carolina FIPS 3900 Feet</b>		

**Shoalest Sounding**  
● Sounding  
Sounding may cover several point areas and is calculated per reach quarter area  
\*+ indicates sounding above MLLW

**USCG Beacon**  
■ Green  
▲ Red  
□ White

**USCG Buoy**  
● Green  
● Red  
● Coast Guard Racon

○ White  
○ Yellow  
○ USCG Light

**Depth in feet**

0-3	3 to 6	6 to 9	9 to 12	Greater Than 12
-----	--------	--------	---------	-----------------

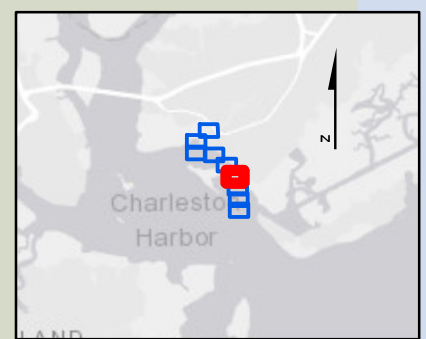
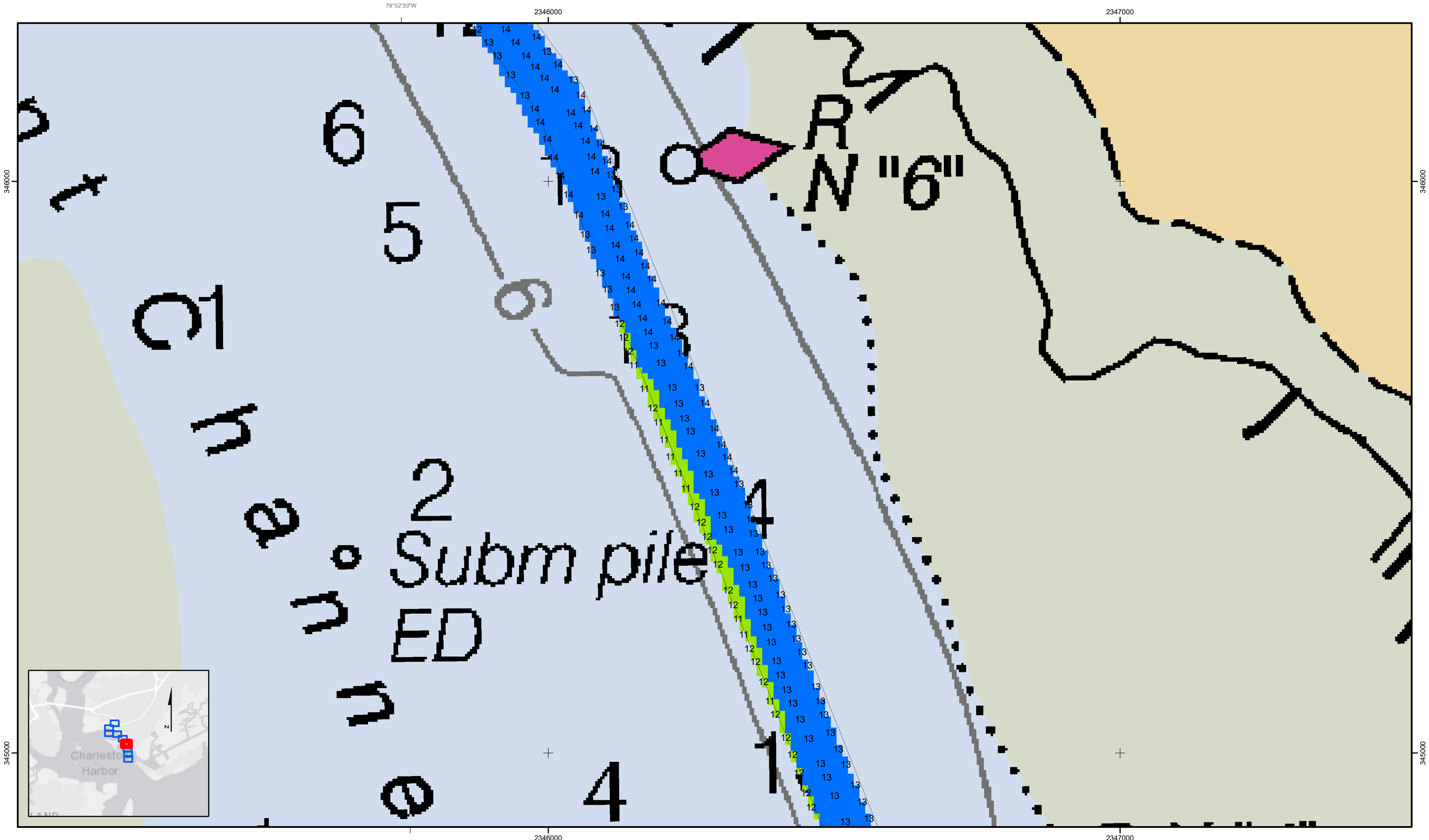
0 250 500 Feet



**Production Notes:**  
1. The information depicted on this product is for plotting purposes only.  
2. Vector hydrographic data derived from surveys conducted by the USACE and approved partners.  
3. Soundings are in feet and refer to Mean Lower Low Water (MLLW).  
4. Raster Background: PanSharpened Worldview-2 imagery dated 2014.

In no event shall the U.S. Army Corps of Engineers, Charleston District Office, Navigation Branch be liable for direct, indirect, incidental, consequential or special damages of any kind, including, but not limited to, loss of anticipated profits or benefits arising out of use of or reliance on the data.  
These data sets have been developed from the best available sources. Although efforts have been made to ensure that the datasets are accurate and reliable, errors and variable conditions originating from physical sources used to develop the data may be reflected in the data supplied.  
**This product is not intended to be used for navigation.**  
Mariners are encouraged to use all prudent safety measures.





**Shem Creek**  
 The information depicted on this map represents the results of surveys made on the dates indicated and can only be considered as indicating the general conditions existing at that time.  
 Concluded on: **02 DEC 2021**  
 Mount Pleasant, South Carolina

U.S. ARMY ENGINEER DISTRICT  
 CORPS OF ENGINEERS  
 CHARLESTON, SOUTH CAROLINA  
 USACE CHARLESTON  
 69A HAGOOD AVE  
 CHARLESTON, SC 29403  
 843-329-8000

Designed By: <b>eHydro Software v3.82</b>	Survey Date: <b>02 DEC 2021</b>	Production Date: <b>07 DEC 2021</b>
Reviewed By: <b>CCW</b>	Absolute Scale: <b>1:1,800</b>	Project Reference Number: <b>CESAC-PRA-0002</b>
Reference Scale: <b>1 inch = 150 feet</b>	Survey Type: <b>CONDITION</b>	
Projection: <b>NAD 1983 StatePlane South Carolina FIPS 3900 Feet</b>		

<b>Shoalest Sounding</b> ● Sounding Sounding may cover several point areas and is calculated per reach quarter area *+ indicates sounding above MLLW	<b>USCG Beacon</b> ■ Green ▲ Red □ White	<b>USCG Buoy</b> ● Green ● Red ● Coast Guard Racon	○ White ○ Yellow ○ USCG Light	<b>Depth in feet</b> ■ 0-3 ■ 3 to 6 ■ 6 to 9 ■ 9 to 12 ■ Greater Than 12
---	---	---	-------------------------------------	---

**Production Notes:**

- The information depicted on this product is for plotting purposes only.
- Vector hydrographic data derived from surveys conducted by the USACE and approved partners.
- Soundings are in feet and refer to Mean Lower Low Water (MLLW).
- Raster Background: PanSharpened Worldview-2 imagery dated 2014.

In no event shall the U.S. Army Corps of Engineers, Charleston District Office, Navigation Branch be liable for direct, indirect, incidental, consequential or special damages of any kind, including, but not limited to, loss of anticipated profits or benefits arising out of use of or reliance on the data.

These data sets have been developed from the best available sources. Although efforts have been made to ensure that the datasets are accurate and reliable, errors and variable conditions originating from physical sources used to develop the data may be reflected in the data supplied.

**This product is not intended to be used for navigation.**  
 Mariners are encouraged to use all prudent safety measures.



346000

346000

345000

345000

79°52'30"W

2346000

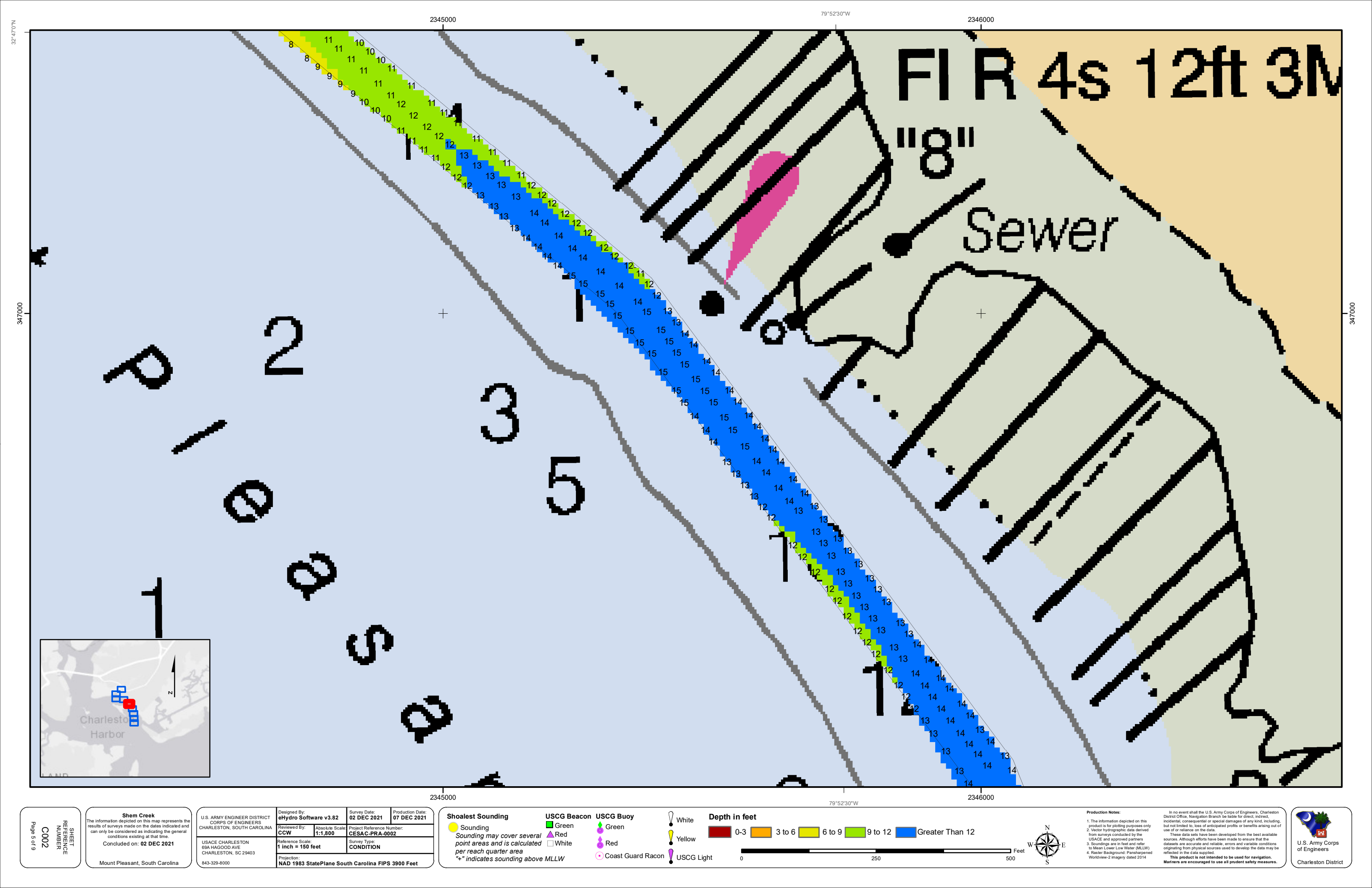
2347000

79°52'30"W

2346000

2347000

SHEET  
 REFERENCE  
 NUMBER  
**C002**  
 Page 4 of 9



SHEET REFERENCE NUMBER  
C002  
Page 5 of 9

**Shem Creek**  
The information depicted on this map represents the results of surveys made on the dates indicated and can only be considered as indicating the general conditions existing at that time.  
Concluded on: **02 DEC 2021**  
Mount Pleasant, South Carolina

Designed By: <b>eHydro Software v3.82</b>	Survey Date: <b>02 DEC 2021</b>	Production Date: <b>07 DEC 2021</b>
Reviewed By: <b>CCW</b>	Absolute Scale: <b>1:1,800</b>	Project Reference Number: <b>CESAC-PRA-0002</b>
Reference Scale: <b>1 inch = 150 feet</b>	Survey Type: <b>CONDITION</b>	
Projection: <b>NAD 1983 StatePlane South Carolina FIPS 3900 Feet</b>		

**Shoalest Sounding**  
● Sounding  
Sounding may cover several point areas and is calculated per reach quarter area  
\*+ indicates sounding above MLLW

**USCG Beacon**  
■ Green  
▲ Red  
□ White

**USCG Buoy**  
● Green  
● Red  
● Coast Guard Racon

○ White  
○ Yellow  
○ USCG Light

**Depth in feet**

0-3 3 to 6 6 to 9 9 to 12 Greater Than 12

0 250 500 Feet



**Production Notes:**

- The information depicted on this product is for plotting purposes only.
- Vector hydrographic data derived from surveys conducted by the USACE and approved partners.
- Soundings are in feet and refer to Mean Lower Low Water (MLLW).
- Raster Background: Panaharpenn Worldview-2 imagery dated 2014.

In no event shall the U.S. Army Corps of Engineers, Charleston District Office, Navigation Branch be liable for direct, indirect, incidental, consequential or special damages of any kind, including, but not limited to, loss of anticipated profits or benefits arising out of use of or reliance on the data.  
These data sets have been developed from the best available sources. Although efforts have been made to ensure that the datasets are accurate and reliable, errors and variable conditions originating from physical sources used to develop the data may be reflected in the data supplied.  
This product is not intended to be used for navigation.  
Mariners are encouraged to use all prudent safety measures.



2343000

79°53'0"W

2344000

2345000

12ft

R "14"

R "12"

R "10"

MAY 2015

2

3

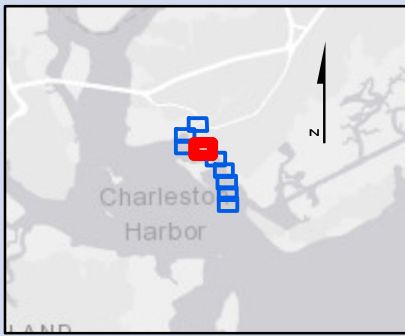
2

M

O

4

U



2343000

79°53'0"W

2344000

2345000

SHEET REFERENCE NUMBER C002 Page 6 of 9

Shem Creek The information depicted on this map represents the results of surveys made on the dates indicated and can only be considered as indicating the general conditions existing at that time. Concluded on: 02 DEC 2021 Mount Pleasant, South Carolina

U.S. ARMY ENGINEER DISTRICT CORPS OF ENGINEERS CHARLESTON, SOUTH CAROLINA USACE CHARLESTON 69A HAGOOD AVE CHARLESTON, SC 29403 843-329-8000

Designed By: eHydro Software v3.82 Survey Date: 02 DEC 2021 Production Date: 07 DEC 2021 Reviewed By: CCW Absolute Scale: 1:1,800 Project Reference Number: CESAC-PRA-0002 Survey Type: CONDITION Reference Scale: 1 inch = 150 feet Projection: NAD 1983 StatePlane South Carolina FIPS 3900 Feet

Shoalest Sounding Sounding may cover several point areas and is calculated per reach quarter area "+." indicates sounding above MLLW

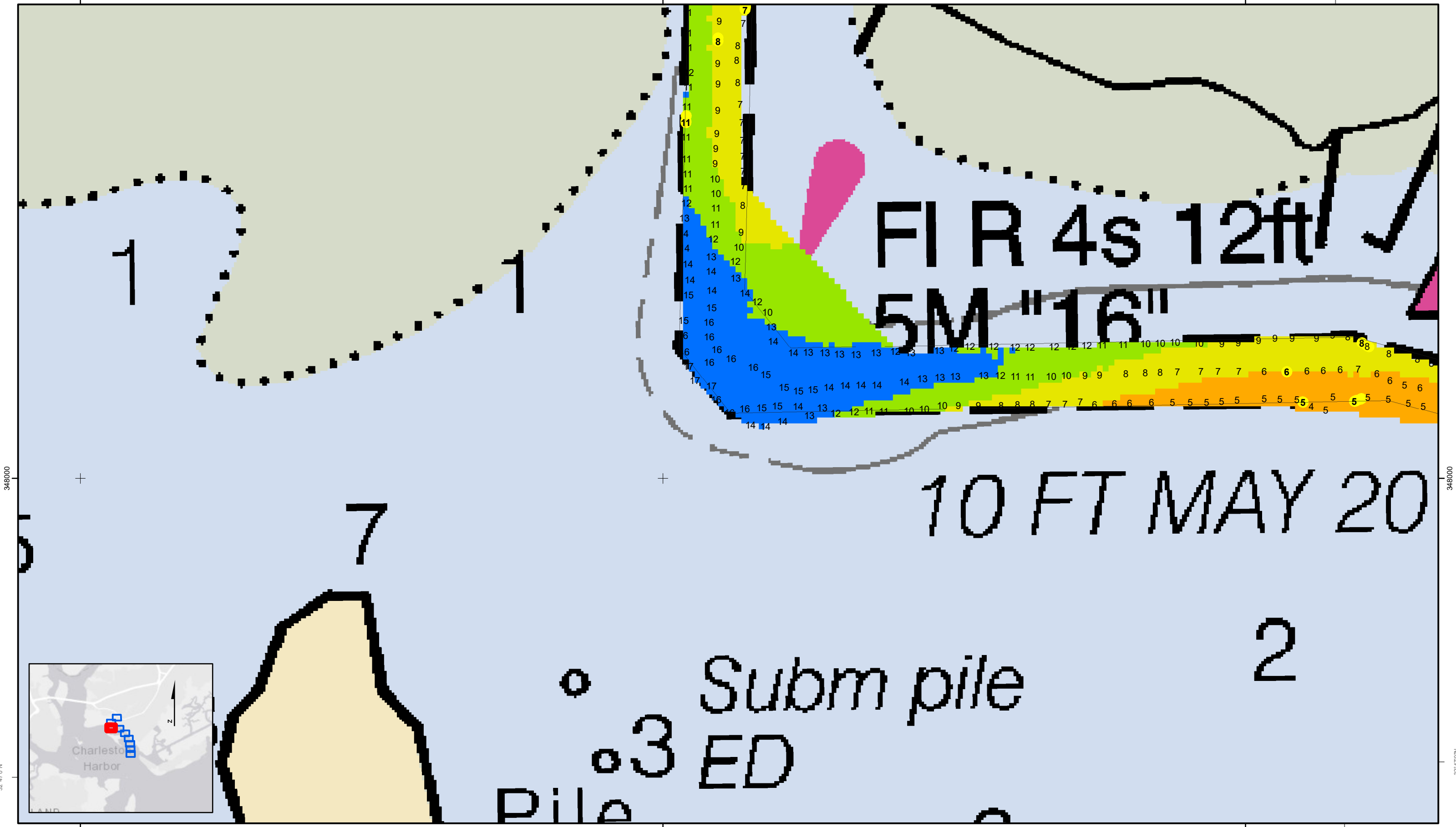
USCG Beacon USCG Buoy White Sounding Yellow USCG Light Green Red Coast Guard Racon

Depth in feet 0-3 3 to 6 6 to 9 9 to 12 Greater Than 12



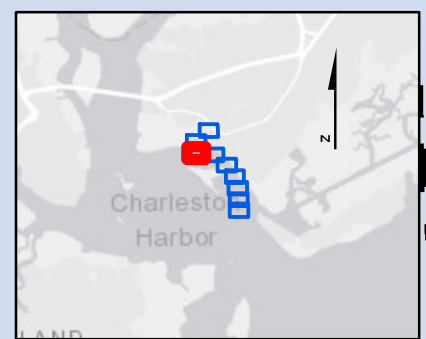
Production Notes: 1. The information depicted on this product is for plotting purposes only... 2. Vector hydrographic data derived from surveys conducted by the USACE and approved partners... 3. Soundings are in feet and refer to Mean Lower Low Water (MLLW)... 4. Raster Background: PanSharpened Worldview-2 imagery dated 2014





348000  
32°47'0"N

348000  
32°47'0"N



**Shem Creek**  
The information depicted on this map represents the results of surveys made on the dates indicated and can only be considered as indicating the general conditions existing at that time.  
Concluded on: **02 DEC 2021**  
Mount Pleasant, South Carolina

U.S. ARMY ENGINEER DISTRICT CORPS OF ENGINEERS CHARLESTON, SOUTH CAROLINA	Designed By: <b>eHydro Software v3.82</b>	Survey Date: <b>02 DEC 2021</b>	Production Date: <b>07 DEC 2021</b>
USACE CHARLESTON 69A HAGOOD AVE CHARLESTON, SC 29403 843-329-8000	Reviewed By: <b>CCW</b>	Absolute Scale: <b>1:1,800</b>	Project Reference Number: <b>CESAC-PRA-0002</b>
	Reference Scale: <b>1 inch = 150 feet</b>	Survey Type: <b>CONDITION</b>	
	Projection: <b>NAD 1983 StatePlane South Carolina FIPS 3900 Feet</b>		

**Shoalest Sounding**  
● Sounding  
Sounding may cover several point areas and is calculated per reach quarter area  
\*+ indicates sounding above MLLW

**USCG Beacon**  
■ Green  
▲ Red  
□ White

**USCG Buoy**  
● Green  
● Red  
● Coast Guard Racon

○ White  
○ Yellow  
○ USCG Light

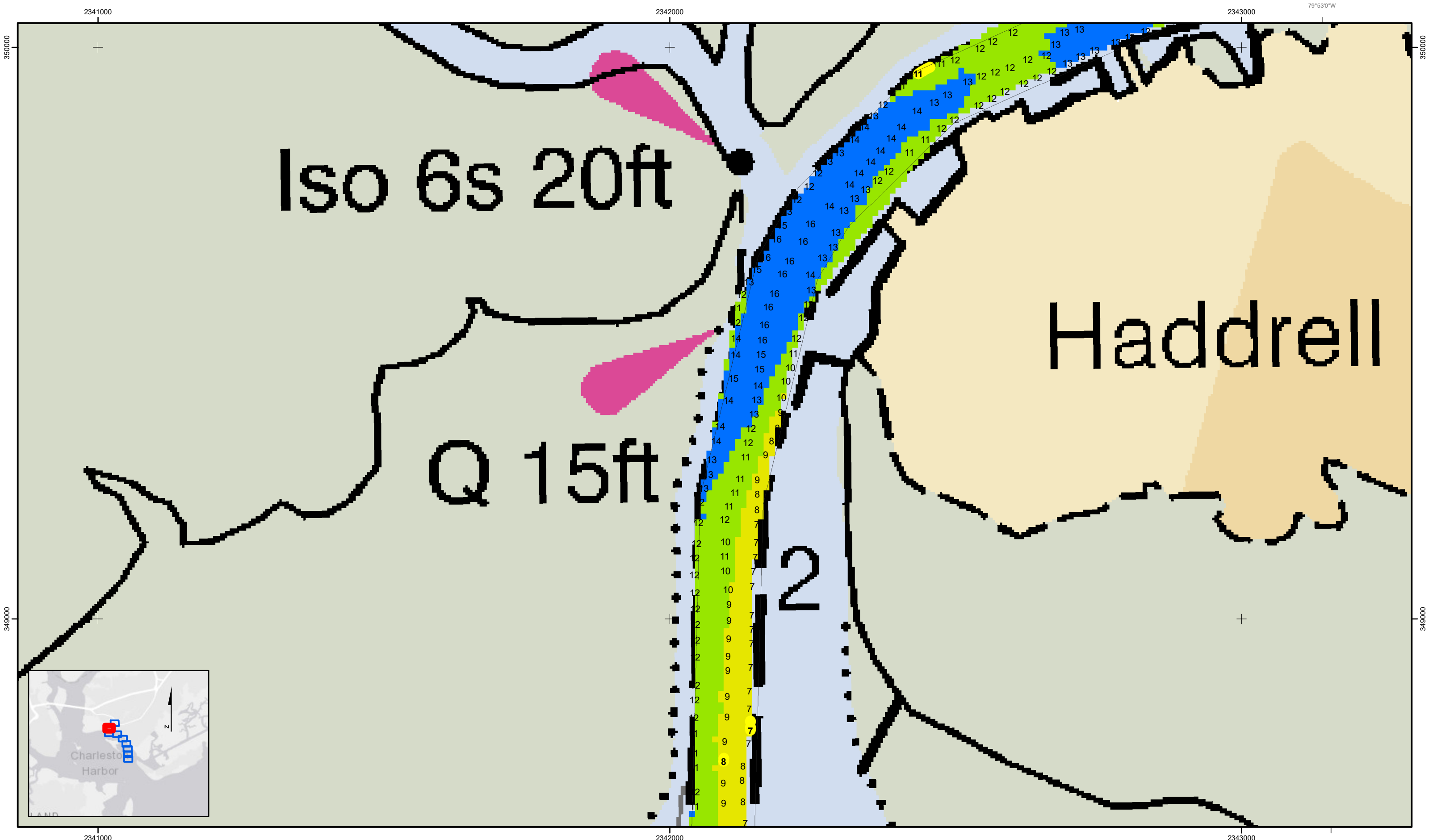
**Depth in feet**  
■ 0-3 ■ 3 to 6 ■ 6 to 9 ■ 9 to 12 ■ Greater Than 12

0 250 500 Feet

**Production Notes:**  
1. The information depicted on this product is for plotting purposes only.  
2. Vector hydrographic data derived from surveys conducted by the USACE and approved partners. Sounding are in feet and refer to Mean Lower Low Water (MLLW).  
3. Sounding are in feet and refer to Mean Lower Low Water (MLLW).  
4. Raster Background: PanSharpened Worldview-2 imagery dated 2014.

In no event shall the U.S. Army Corps of Engineers, Charleston District Office, Navigation Branch be liable for direct, indirect, incidental, consequential or special damages of any kind, including, but not limited to, loss of anticipated profits or benefits arising out of use of or reliance on the data.  
These data sets have been developed from the best available sources. Although efforts have been made to ensure that the datasets are accurate and reliable, errors and variable conditions originating from physical sources used to develop the data may be reflected in the data supplied.  
This product is not intended to be used for navigation.  
Mariners are encouraged to use all prudent safety measures.

U.S. Army Corps of Engineers  
Charleston District



**Shem Creek**  
 The information depicted on this map represents the results of surveys made on the dates indicated and can only be considered as indicating the general conditions existing at that time.  
 Concluded on: **02 DEC 2021**  
 Mount Pleasant, South Carolina

U.S. ARMY ENGINEER DISTRICT CORPS OF ENGINEERS CHARLESTON, SOUTH CAROLINA	Designed By: <b>eHydro Software v3.8.2</b>	Survey Date: <b>02 DEC 2021</b>	Production Date: <b>07 DEC 2021</b>
USACE CHARLESTON 69A HAGOOD AVE CHARLESTON, SC 29403 843-329-8000	Reviewed By: <b>CCW</b>	Absolute Scale: <b>1:1,800</b>	Project Reference Number: <b>CESAC-PRA-0002</b>
	Reference Scale: <b>1 inch = 150 feet</b>	Survey Type: <b>CONDITION</b>	
	Projection: <b>NAD 1983 StatePlane South Carolina FIPS 3900 Feet</b>		

**Shoalest Sounding**  
 Sounding may cover several point areas and is calculated per reach quarter area  
 "+" indicates sounding above MLLW

**USCG Beacon**  
 Green  
 Red  
 White

**USCG Buoy**  
 Green  
 Red  
 Coast Guard Racon

**White**  
 Yellow  
 USCG Light

**Depth in feet**  
 0-3  
 3 to 6  
 6 to 9  
 9 to 12  
 Greater Than 12

0 250 500 Feet

**Production Notes:**

- The information depicted on this product is for plotting purposes only
- Vector hydrographic data derived from surveys conducted by the USACE and approved partners
- Soundings are in feet and refer to Mean Lower Low Water (MLLW)
- Raster Background: PanSharpened Worldview-2 imagery dated 2014

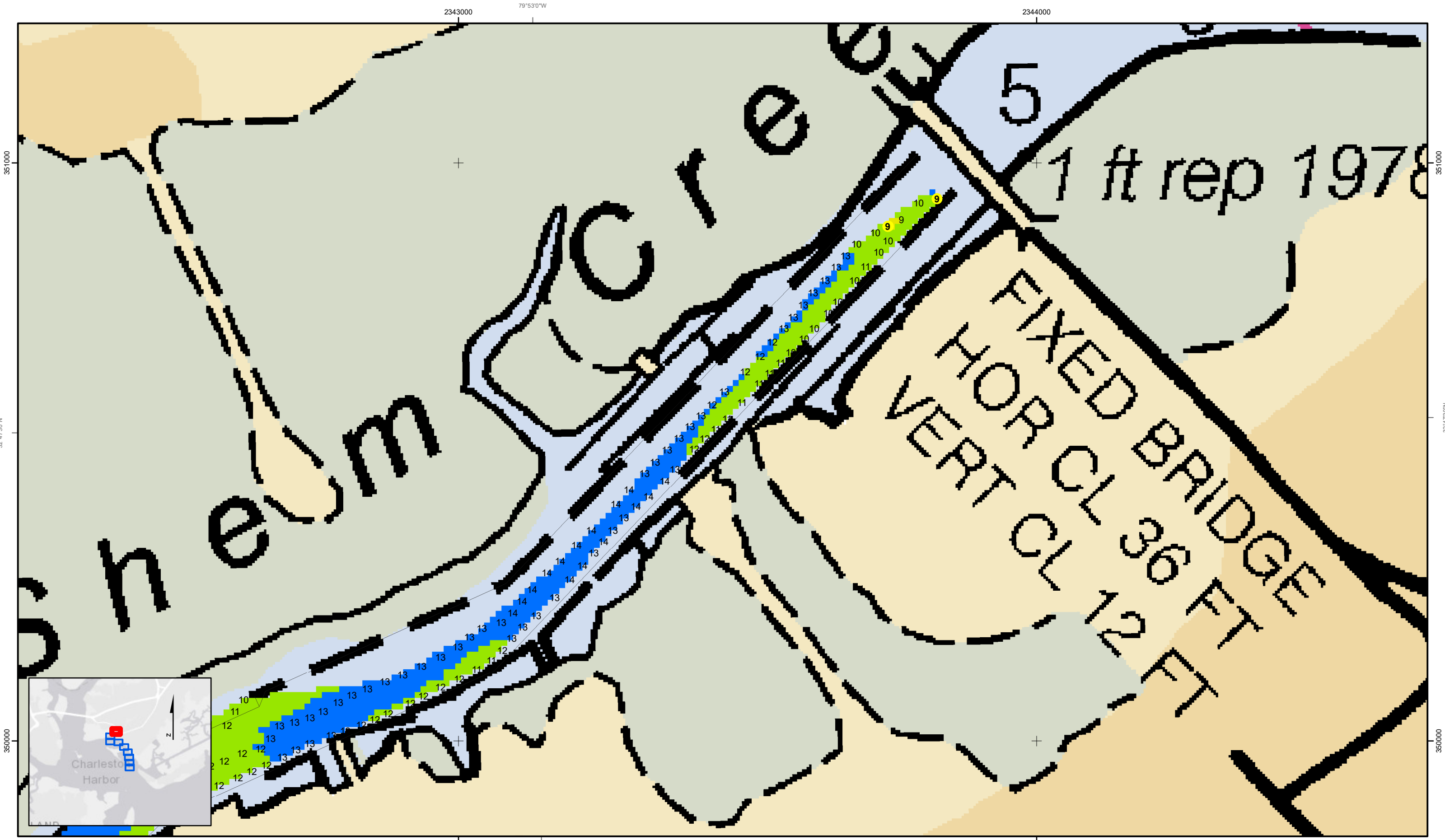
In no event shall the U.S. Army Corps of Engineers, Charleston District Office, Navigation Branch be liable for direct, indirect, incidental, consequential or special damages of any kind, including, but not limited to, loss of anticipated profits or benefits arising out of use of or reliance on the data.

These data sets have been developed from the best available sources. Although efforts have been made to ensure that the datasets are accurate and reliable, errors and variable conditions originating from physical sources used to develop the data may be reflected in the data supplied.

This product is not intended to be used for navigation.  
 Mariners are encouraged to use all prudent safety measures.

U.S. Army Corps of Engineers  
 Charleston District





SHEET REFERENCE NUMBER  
C002  
Page 9 of 9

**Shem Creek**  
The information depicted on this map represents the results of surveys made on the dates indicated and can only be considered as indicating the general conditions existing at that time.  
Concluded on: **02 DEC 2021**  
Mount Pleasant, South Carolina

U.S. ARMY ENGINEER DISTRICT CORPS OF ENGINEERS CHARLESTON, SOUTH CAROLINA	Designed By: <b>eHydro Software v3.82</b>	Survey Date: <b>02 DEC 2021</b>	Production Date: <b>07 DEC 2021</b>
USACE CHARLESTON 69A HAGOOD AVE CHARLESTON, SC 29403 843-329-8000	Reviewed By: <b>CCW</b>	Absolute Scale: <b>1:1,800</b>	Project Reference Number: <b>CESAC-PRA-0002</b>
	Reference Scale: <b>1 inch = 150 feet</b>	Survey Type: <b>CONDITION</b>	
	Projection: <b>NAD 1983 StatePlane South Carolina FIPS 3900 Feet</b>		

**Shoalest Sounding**  
Sounding may cover several point areas and is calculated per reach quarter area  
\*+ indicates sounding above MLLW

Sounding	USCG Beacon	USCG Buoy	White	Depth in feet 0-3
Sounding	USCG Light	Coast Guard Racon	Yellow	Depth in feet 3 to 6
Sounding			USCG Light	Depth in feet 6 to 9
				Depth in feet 9 to 12
				Depth in feet Greater Than 12

0 250 500 Feet

**Production Notes:**  
1. The information depicted on this product is for plotting purposes only  
2. Vector hydrographic data derived from surveys conducted by the USACE and approved partners  
3. Soundings are in feet and refer to Mean Lower Low Water (MLLW)  
4. Raster Background: PanSharpened Worldview-2 imagery dated 2014

In no event shall the U.S. Army Corps of Engineers, Charleston District Office, Navigation Branch be liable for direct, indirect, incidental, consequential or special damages of any kind, including, but not limited to, loss of anticipated profits or benefits arising out of use of or reliance on the data.  
These data sets have been developed from the best available sources. Although efforts have been made to ensure that the datasets are accurate and reliable, errors and variable conditions originating from physical sources used to develop the data may be reflected in the data supplied.  
This product is not intended to be used for navigation.  
Mariners are encouraged to use all prudent safety measures.