

**Shem Creek**  
The information depicted on this map represents the results of surveys made on the dates indicated and can only be considered as indicating the general conditions existing at that time.  
Concluded on: **17 NOV 2022**  
Mount Pleasant, South Carolina

|   |   |                                    |  |
|---|---|------------------------------------|--|
| U.S. ARMY ENGINEER DISTRICT<br>CORPS OF ENGINEERS<br>CHARLESTON, SOUTH CAROLINA | Designed By:<br><b>eHydro Software v3.82</b>                            | Survey Date:<br><b>17 NOV 2022</b> | Production Date:<br><b>21 NOV 2022</b>             |
| SPATIAL DATA BRANCH<br>69A HAGOOD AVE<br>CHARLESTON, SC 29403                   | Reviewed By:<br><b>CCW</b>  | Absolute Scale:<br><b>1:1,800</b>  | Project Reference Number:<br><b>CESAC-PRA-0002</b> |
| CESAC-GIS@USACE.ARMY.MIL  | Reference Scale:<br><b>1 inch = 150 feet</b>                            | Survey Type:<br><b>CONDITION</b>   |  |
|   | Projection:<br><b>NAD 1983 StatePlane South Carolina FIPS 3900 Feet</b> |                                    |  |

**Shoalest Sounding**  
● Sounding  
Sounding may cover several point areas and is calculated per reach quarter area  
"±" indicates sounding above MLLW

**USCG Beacon**  
■ Green  
▲ Red  
□ White

**USCG Buoy**  
● Green  
● Red  
● Coast Guard Racon

○ White  
○ Yellow  
○ USCG Light

**Depth in feet**

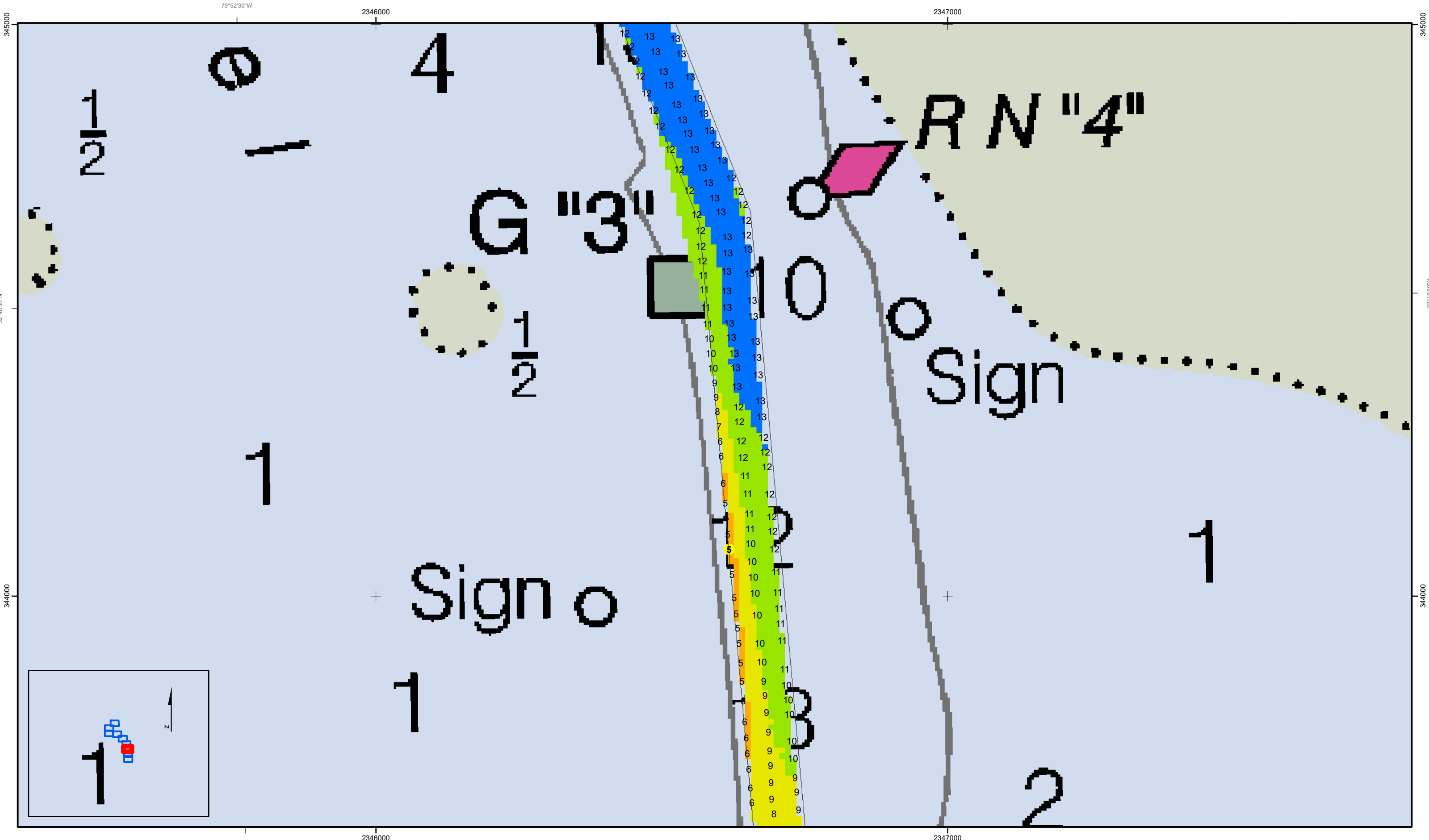
|     |        |        |         |                 |
|-----|--------|--------|---------|-----------------|
| 0-3 | 3 to 6 | 6 to 9 | 9 to 12 | Greater Than 12 |
|-----|--------|--------|---------|-----------------|

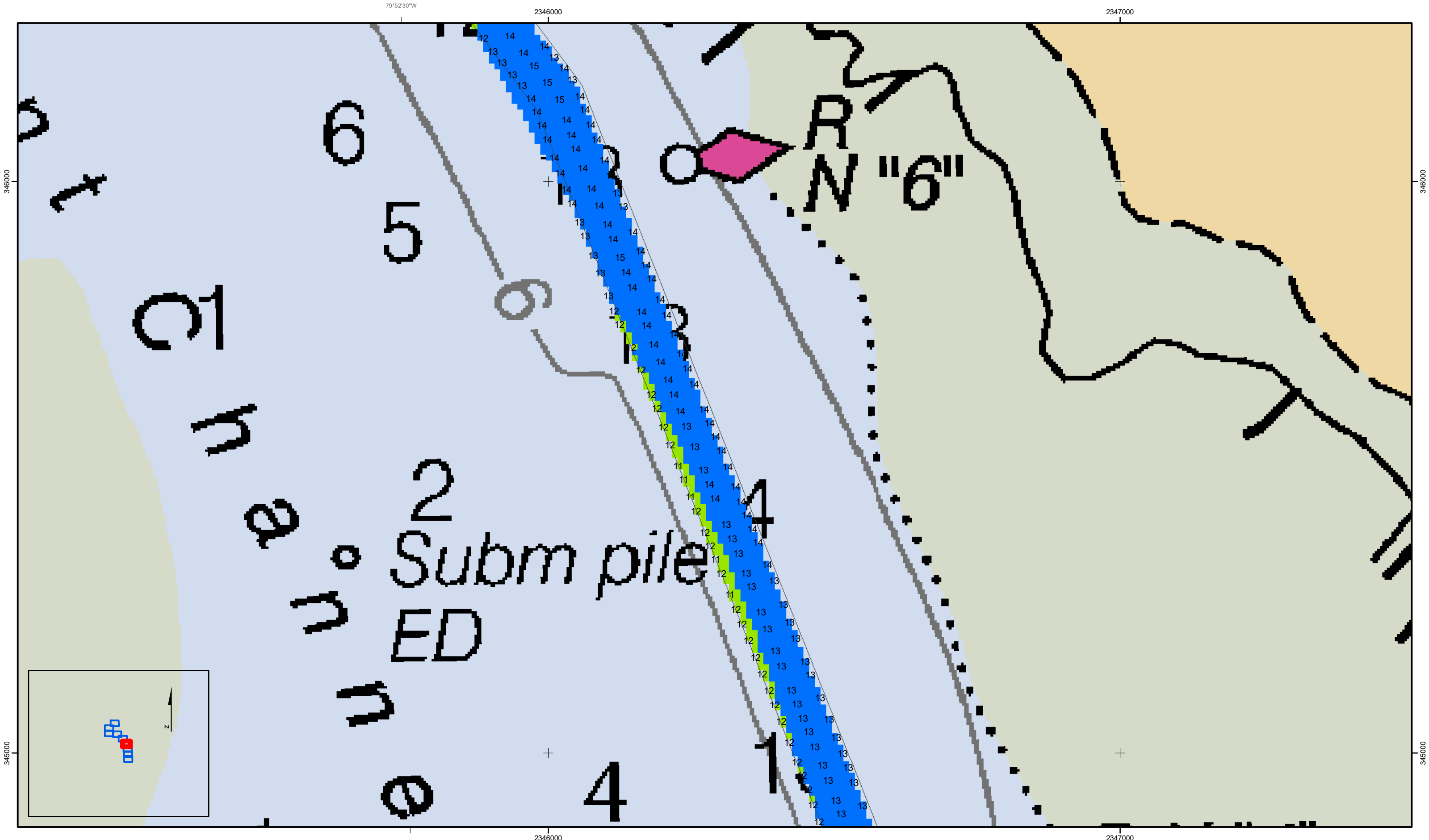
0 250 500 Feet

**Production Notes:**  
1. The information depicted on this product is for plotting purposes only.  
2. Vector hydrographic data derived from surveys conducted by the USACE and approved partners to Mean Lower Low Water (MLLW).  
3. Soundings are in feet and refer to Mean Lower Low Water (MLLW).  
4. Raster Background: Panharpened Worldview-2 imagery dated 2014.

In no event shall the U.S. Army Corps of Engineers, Charleston District Office, Spatial Data Branch be liable for direct, indirect, incidental, consequential or special damages of any kind, including, but not limited to, loss of anticipated profits or benefits arising out of use of or reliance on the data.  
These data sets have been developed from the best available sources. Although efforts have been made to ensure that the datasets are accurate and reliable, errors and variable conditions originating from physical sources used to develop the data may be reflected in the data supplied.  
This product is not intended to be used for navigation.  
Mariners are encouraged to use all prudent safety measures.

**U.S. Army Corps of Engineers**  
Charleston District





Page 4 of 9

C002

SHEET  
REFERENCE  
NUMBER

Shem Creek

The information depicted on this map represents the results of surveys made on the dates indicated and can only be considered as indicating the general conditions existing at that time.

Concluded on: 17 NOV 2022

Mount Pleasant, South Carolina

U.S. ARMY ENGINEER DISTRICT  
CORPS OF ENGINEERS  
CHARLESTON, SOUTH CAROLINA

SPATIAL DATA BRANCH  
69A HAGOOD AVE  
CHARLESTON, SC 29403  
CESAC-GIS@USACE.ARMY.MIL

Designed By:  
eHydro Software v3.82

Reviewed By:  
CCW

Reference Scale:  
1 inch = 150 feet

Projection:  
NAD 1983 StatePlane South Carolina FIPS 3900 Feet

Survey Date:  
17 NOV 2022

Production Date:  
21 NOV 2022

Project Reference Number:  
CESAC-PRA-0002

Survey Type:  
CONDITION

Shoalest Sounding

● Sounding

Sounding may cover several point areas and is calculated per reach quarter area

\* indicates sounding above MLLW

USCG Beacon

■ Green

▲ Red

□ White

USCG Buoy

● Green

● Red

● Coast Guard Racon

● USCG Light

Depth in feet

0-3

3 to 6

6 to 9

9 to 12

Greater Than 12

0 250 500 Feet

Production Notes:

1. The information depicted on this product is for plotting purposes only

2. Vector hydrographic data derived from surveys conducted by the USACE and approved partners to Mean Lower Low Water (MLLW)

3. Soundings are in feet and refer to the date supplied.

4. Raster Background: Panharpened Worldview-2 imagery dated 2014

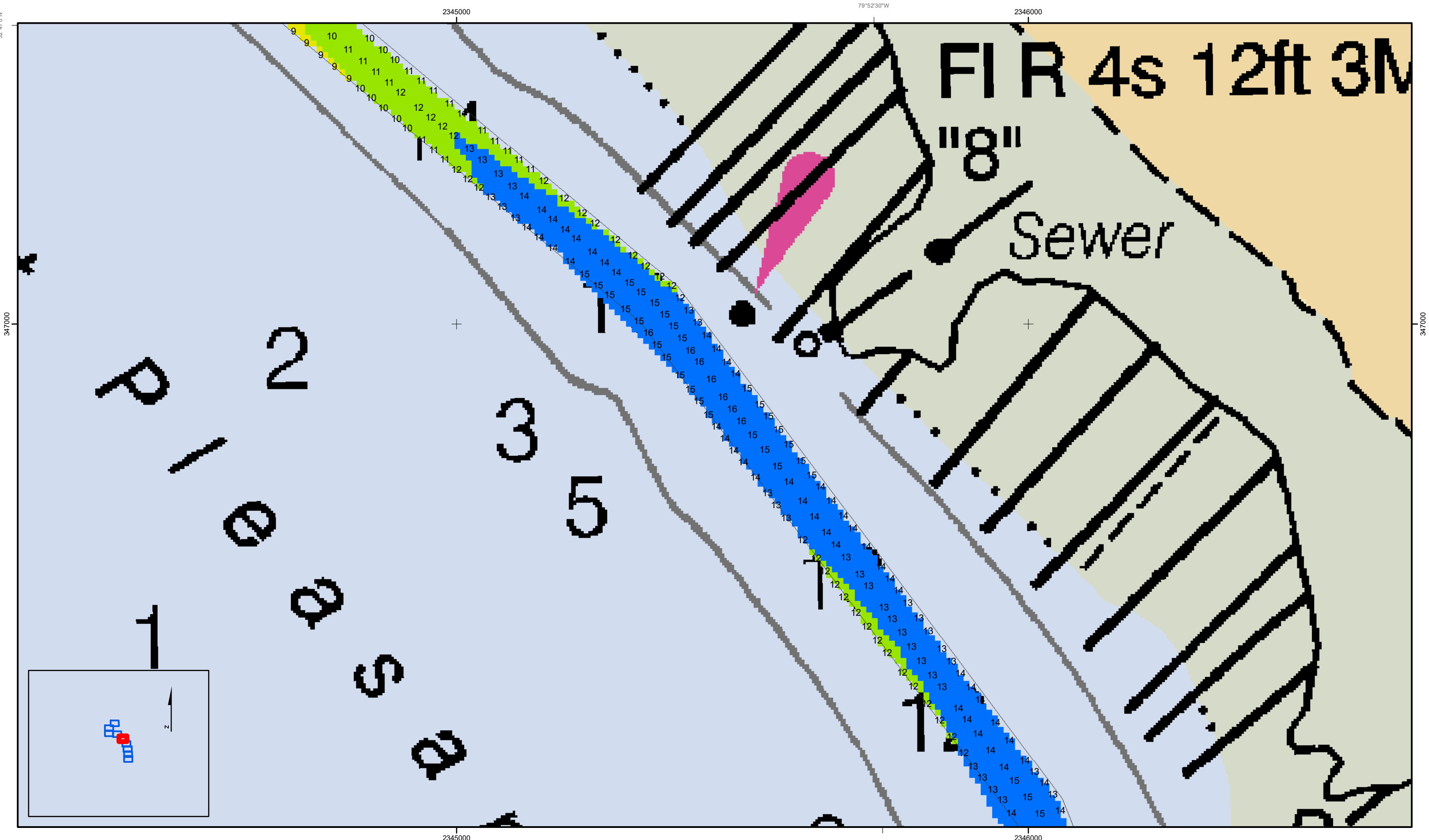
In no event shall the U.S. Army Corps of Engineers, Charleston District Office, Spatial Data Branch be liable for direct, indirect, incidental, consequential or special damages of any kind, including, but not limited to, loss of anticipated profits or benefits arising out of use of or reliance on the data.

This product is not intended to be used for navigation.

Mariners are encouraged to use all prudent safety measures.

U.S. Army Corps of Engineers

Charleston District



Page 5 of 9

SHEET  
REFERENCE  
NUMBER  
**C002**

**Shem Creek**  
The information depicted on this map represents the results of surveys made on the dates indicated and can only be considered as indicating the general conditions existing at that time.  
Concluded on: **17 NOV 2022**  
Mount Pleasant, South Carolina

|   |  |   |                                    |  |
|---|--|---|------------------------------------|--|
| U.S. ARMY ENGINEER DISTRICT<br>CORPS OF ENGINEERS<br>CHARLESTON, SOUTH CAROLINA           |  | Designed By:<br><b>eHydro Software v3.82</b>                            | Survey Date:<br><b>17 NOV 2022</b> | Production Date:<br><b>21 NOV 2022</b>             |
| SPATIAL DATA BRANCH<br>69A HAGOOD AVE<br>CHARLESTON, SC 29403<br>CESAC-GIS@USACE.ARMY.MIL |  | Reviewed By:<br><b>CCW</b>  | Absolute Scale:<br><b>1:1,800</b>  | Project Reference Number:<br><b>CESAC-PRA-0002</b> |
|   |  | Reference Scale:<br><b>1 inch = 150 feet</b>                            | Survey Type:<br><b>CONDITION</b>   |  |
|   |  | Projection:<br><b>NAD 1983 StatePlane South Carolina FIPS 3900 Feet</b> |                                    |  |

**Shoalest Sounding**  
● Sounding  
Sounding may cover several point areas and is calculated per reach quarter area  
"±" indicates sounding above MLLW

**USCG Beacon**  
■ Green  
▲ Red  
□ White

**USCG Buoy**  
● Green  
● Red  
● Coast Guard Racon

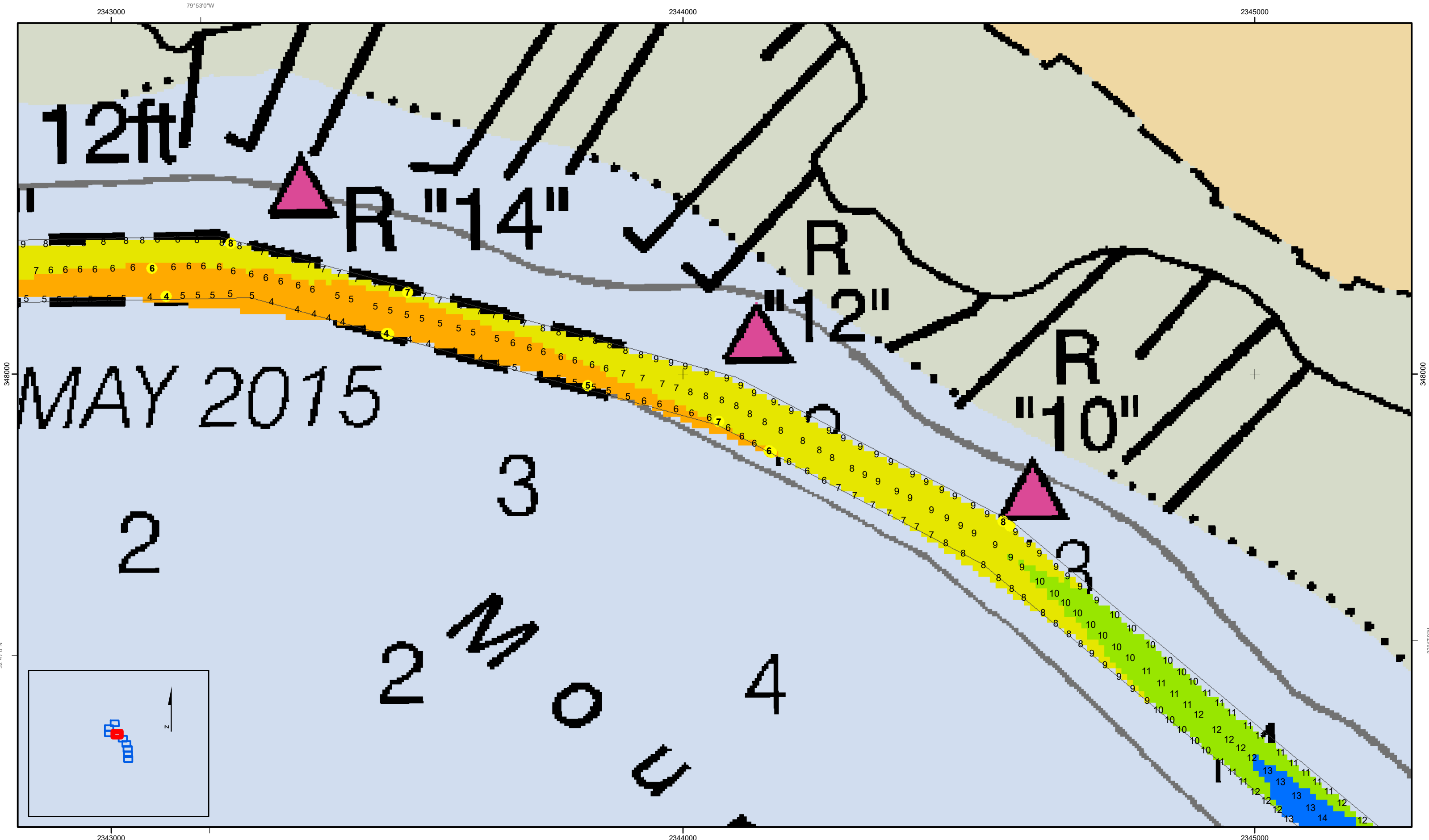
**White**  
● White  
● Yellow  
● USCG Light

**Depth in feet**  
■ 0-3 ■ 3 to 6 ■ 6 to 9 ■ 9 to 12 ■ Greater Than 12

0 250 500 Feet

**Production Notes:**  
1. The information depicted on this product is for plotting purposes only.  
2. Vector hydrographic data derived from surveys conducted by the USACE and approved partners to Mean Lower Low Water (MLLW).  
3. Soundings are in feet and refer to Mean Lower Low Water (MLLW).  
4. Raster Background: Panharpened Worldview-2 imagery dated 2014.  
  
In no event shall the U.S. Army Corps of Engineers, Charleston District Office, Spatial Data Branch be liable for direct, indirect, incidental, consequential or special damages of any kind, including, but not limited to, loss of anticipated profits or benefits arising out of use of or reliance on the data.  
These data sets have been developed from the best available sources. Although efforts have been made to ensure that the datasets are accurate and reliable, errors and variable conditions originating from physical sources used to develop the data may be reflected in the data supplied.  
This product is not intended to be used for navigation.  
Mariners are encouraged to use all prudent safety measures.

U.S. Army Corps of Engineers  
Charleston District



Page 6 of 9

SHEET  
REFERENCE  
NUMBER  
C002

**Shem Creek**  
The information depicted on this map represents the results of surveys made on the dates indicated and can only be considered as indicating the general conditions existing at that time.  
Concluded on: **17 NOV 2022**  
Mount Pleasant, South Carolina

|   |  |                                    |  |
|---|--|------------------------------------|--|
| U.S. ARMY ENGINEER DISTRICT<br>CORPS OF ENGINEERS<br>CHARLESTON, SOUTH CAROLINA           | Designed By:<br><b>eHydro Software v3.82</b> | Survey Date:<br><b>17 NOV 2022</b> | Production Date:<br><b>21 NOV 2022</b>             |
|   | Reviewed By:<br><b>CCW</b>                   | Absolute Scale:<br><b>1:1,800</b>  | Project Reference Number:<br><b>CESAC-PRA-0002</b> |
| SPATIAL DATA BRANCH<br>69A HAGOOD AVE<br>CHARLESTON, SC 29403<br>CESAC-GIS@USACE.ARMY.MIL | Reference Scale:<br><b>1 inch = 150 feet</b> | Survey Type:<br><b>CONDITION</b>   |  |
| Projection:<br><b>NAD 1983 StatePlane South Carolina FIPS 3900 Feet</b>                   |  |                                    |  |

**Shoalest Sounding**  
● Sounding  
Sounding may cover several point areas and is calculated per reach quarter area  
"±" indicates sounding above MLLW

**USCG Beacon**  
■ Green  
▲ Red  
□ White

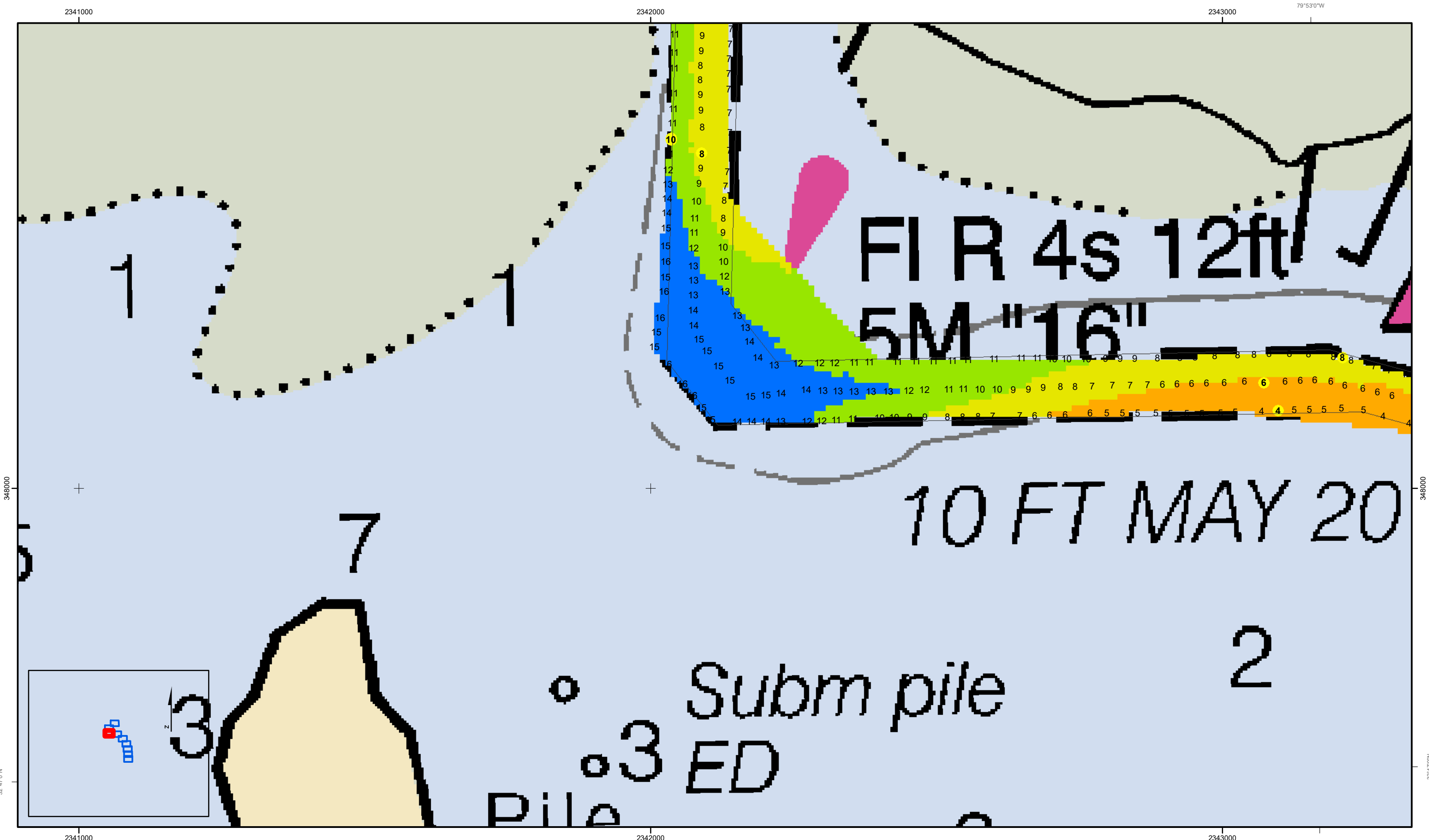
**USCG Buoy**  
● Green  
● Red  
● Coast Guard Racon

**White**  
●  
**Yellow**  
●  
**USCG Light**  
●

**Depth in feet**  
■ 0-3 ■ 3 to 6 ■ 6 to 9 ■ 9 to 12 ■ Greater Than 12  
0 250 500 Feet

**Production Notes:**  
1. The information depicted on this product is for plotting purposes only.  
2. Vector hydrographic data derived from surveys conducted by the USACE and approved partners to Mean Lower Low Water (MLLW).  
3. Soundings are in feet and refer to the date of the survey.  
4. Raster Background: Panharpened Worldview-2 imagery dated 2014.  
  
In no event shall the U.S. Army Corps of Engineers, Charleston District Office, Spatial Data Branch be liable for direct, indirect, incidental, consequential or special damages of any kind, including, but not limited to, loss of anticipated profits or benefits arising out of use of or reliance on the data.  
These data sets have been developed from the best available sources. Although efforts have been made to ensure that the datasets are accurate and reliable, errors and variable conditions originating from physical sources used to develop the data may be reflected in the data supplied.  
**This product is not intended to be used for navigation.**  
Mariners are encouraged to use all prudent safety measures.

U.S. Army Corps of Engineers  
Charleston District



2341000

2342000

2343000

2344000

348000

348000

348000

348000

32°47'0"N

79°53'0"W

32°47'0"N

79°53'0"W

Shem Creek

The information depicted on this map represents the results of surveys made on the dates indicated and can only be considered as indicating the general conditions existing at that time.

Concluded on: 17 NOV 2022

Mount Pleasant, South Carolina

U.S. ARMY ENGINEER DISTRICT  
CORPS OF ENGINEERS  
CHARLESTON, SOUTH CAROLINA

SPATIAL DATA BRANCH  
69A HAGOOD AVE  
CHARLESTON, SC 29403  
CESAC-GIS@USACE.ARMY.MIL

Designed By:  
eHydro Software v3.82

Reviewed By:  
CCW

Reference Scale:  
1 inch = 150 feet

Projection:  
NAD 1983 StatePlane South Carolina FIPS 3900 Feet

Survey Date:  
17 NOV 2022

Production Date:  
21 NOV 2022

Project Reference Number:  
CESAC-PRA-0002

Survey Type:  
CONDITION

Shoalest Sounding

● Sounding

Sounding may cover several point areas and is calculated per reach quarter area

\*+ indicates sounding above MLLW

USCG Beacon

■ Green

▲ Red

□ White

USCG Buoy

● Green

● Red

● Coast Guard Racon

USCG Light

● White

● Yellow

● USCG Light

Depth in feet

■ 0-3

■ 3 to 6

■ 6 to 9

■ 9 to 12

■ Greater Than 12

0

250

500

Feet

N

E

S

W

Production Notes:

1. The information depicted on this product is for plotting purposes only

2. Vector hydrographic data derived from surveys conducted by the USACE and approved partners to Mean Lower Low Water (MLLW)

3. Soundings are in feet and refer to Mean Lower Low Water (MLLW)

4. Raster Background: Panharpened Worldview-2 imagery dated 2014

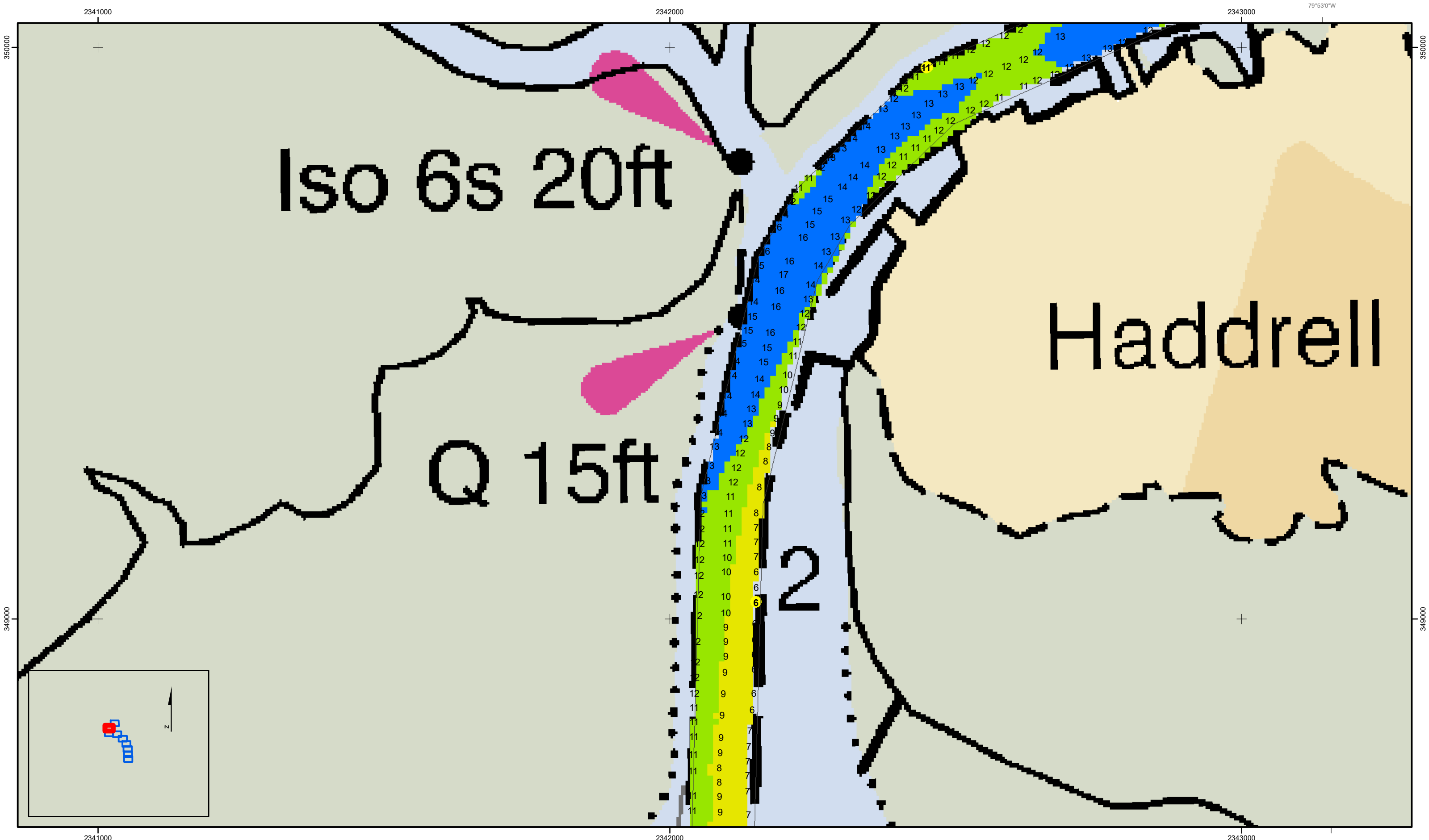
In no event shall the U.S. Army Corps of Engineers, Charleston District Office, Spatial Data Branch be liable for direct, indirect, incidental, consequential or special damages of any kind, including, but not limited to, loss of anticipated profits or benefits arising out of use of or reliance on the data.

These data sets have been developed from the best available sources. Although efforts have been made to ensure that the datasets are accurate and reliable, errors and variable conditions originating from physical sources used to develop the data may be reflected in the data supplied.

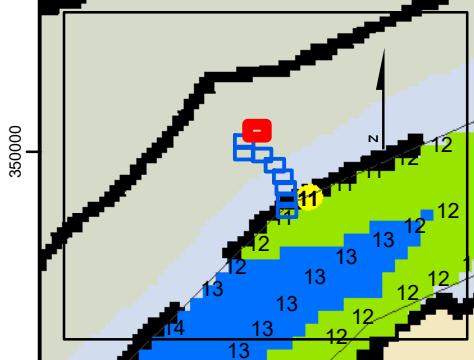
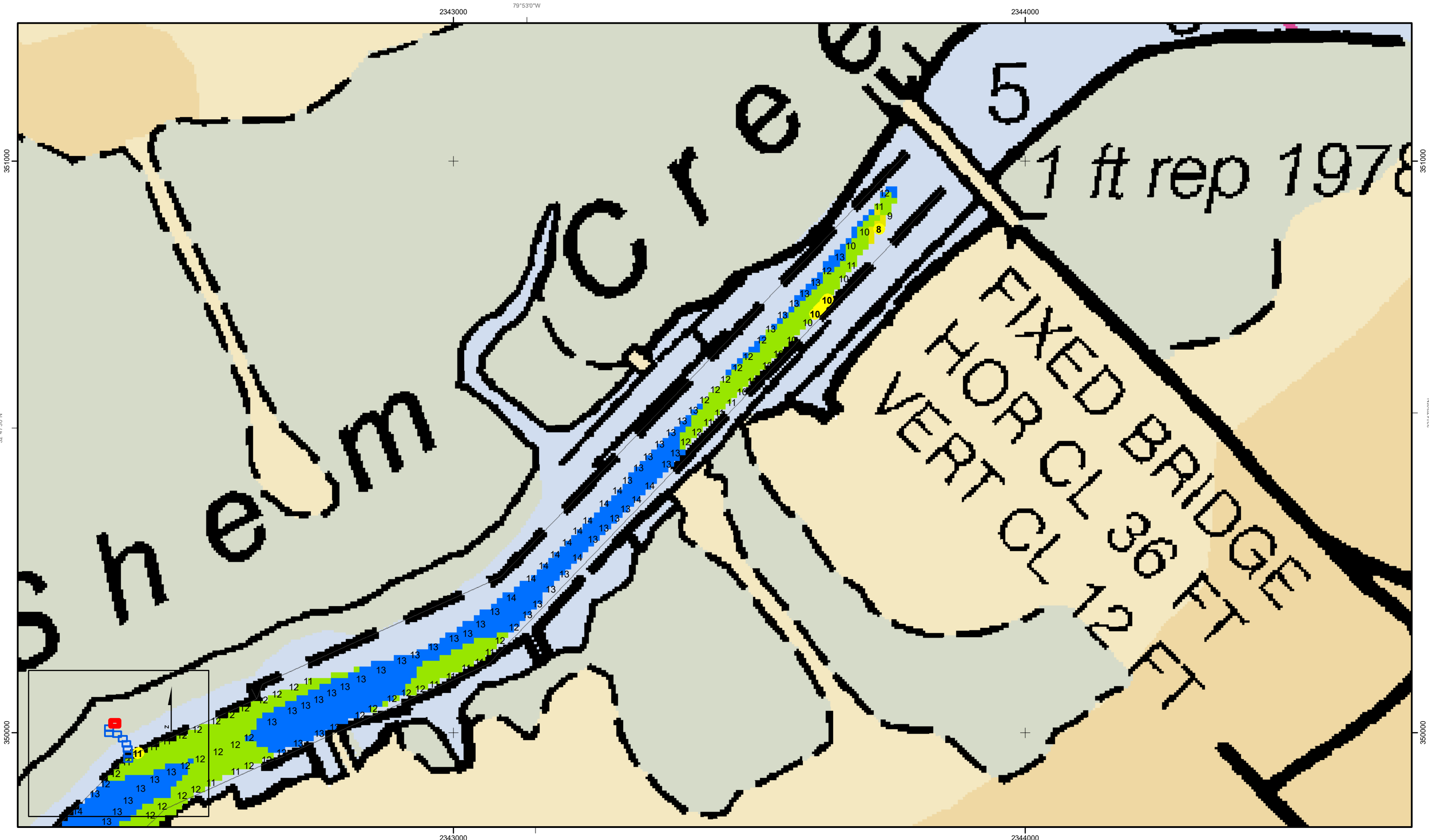
This product is not intended to be used for navigation. Mariners are encouraged to use all prudent safety measures.

U.S. Army Corps of Engineers

Charleston District







Page 9 of 9

C002

SHEET  
REFERENCE  
NUMBER

**Shem Creek**

The information depicted on this map represents the results of surveys made on the dates indicated and can only be considered as indicating the general conditions existing at that time.

Concluded on: **17 NOV 2022**

Mount Pleasant, South Carolina

|   |  |  |                                    |  |
|---|--|--|------------------------------------|--|
| U.S. ARMY ENGINEER DISTRICT<br>CORPS OF ENGINEERS<br>CHARLESTON, SOUTH CAROLINA |  | Designed By:<br><b>eHydro Software v3.82</b> | Survey Date:<br><b>17 NOV 2022</b> | Production Date:<br><b>21 NOV 2022</b>             |
| SPATIAL DATA BRANCH<br>69A HAGOOD AVE<br>CHARLESTON, SC 29403                   |  | Reviewed By:<br><b>CCW</b>                   | Absolute Scale:<br><b>1:1,800</b>  | Project Reference Number:<br><b>CESAC-PRA-0002</b> |
| CESAC-GIS@USACE.ARMY.MIL  |  | Reference Scale:<br><b>1 inch = 150 feet</b> | Survey Type:<br><b>CONDITION</b>   |  |
| Projection:<br><b>NAD 1983 StatePlane South Carolina FIPS 3900 Feet</b>         |  |  |                                    |  |

**Shoalest Sounding**

● Sounding

Sounding may cover several point areas and is calculated per reach quarter area

\*+ indicates sounding above MLLW

**USCG Beacon**

■ Green

▲ Red

□ White

White

Yellow

USCG Light

**USCG Buoy**

● Green

● Red

● Coast Guard Racon

**Depth in feet**

0-3 3 to 6 6 to 9 9 to 12 Greater Than 12

0 250 500 Feet

**Production Notes:**

- The information depicted on this product is for plotting purposes only
- Vector hydrographic data derived from surveys conducted by the USACE and approved partners
- Soundings are in feet and refer to Mean Lower Low Water (MLLW)
- Raster Background: Panharpened Worldview-2 imagery dated 2014

In no event shall the U.S. Army Corps of Engineers, Charleston District Office, Spatial Data Branch be liable for direct, indirect, incidental, consequential or special damages of any kind, including, but not limited to, loss of anticipated profits or benefits arising out of use of or reliance on the data.

These data sets have been developed from the best available sources. Although efforts have been made to ensure that the datasets are accurate and reliable, errors and variable conditions originating from physical sources used to develop the data may be reflected in the data supplied.

This product is not intended to be used for navigation. Mariners are encouraged to use all prudent safety measures.

U.S. Army Corps of Engineers  
Charleston District