

Page 1 of 9

SHEET
REFERENCE
NUMBER
C002

Shem Creek
The information depicted on this map represents the results of surveys made on the dates indicated and can only be considered as indicating the general conditions existing at that time.
Concluded on: **25 APR 2023**
Mount Pleasant, South Carolina

U.S. ARMY ENGINEER DISTRICT CORPS OF ENGINEERS CHARLESTON, SOUTH CAROLINA	Designed By: eHydro Software v3.82	Survey Date: 25 APR 2023	Production Date: 1 MAY 2023
SPATIAL DATA BRANCH 69A HAGOOD AVE CHARLESTON, SC 29403	Reviewed By: CCW	Absolute Scale: 1:1,800	Project Reference Number: CESAC-PRA-0002
CESAC-GIS@USACE.ARMY.MIL	Reference Scale: 1 inch = 150 feet	Survey Type: CONDITION	
	Projection: NAD 1983 StatePlane South Carolina FIPS 3900 Feet		

Shoalest Sounding
● Sounding
Sounding may cover several point areas and is calculated per reach quarter area
"4" indicates sounding above MLLW

USCG Beacon
■ Green
▲ Red
□ White

USCG Buoy
● Green
● Red
● Coast Guard Racon

White
● Yellow
● USCG Light

Depth in feet

0-3

3 to 6

6 to 9

9 to 12

Greater Than 12

0

250

500

Feet

N

S

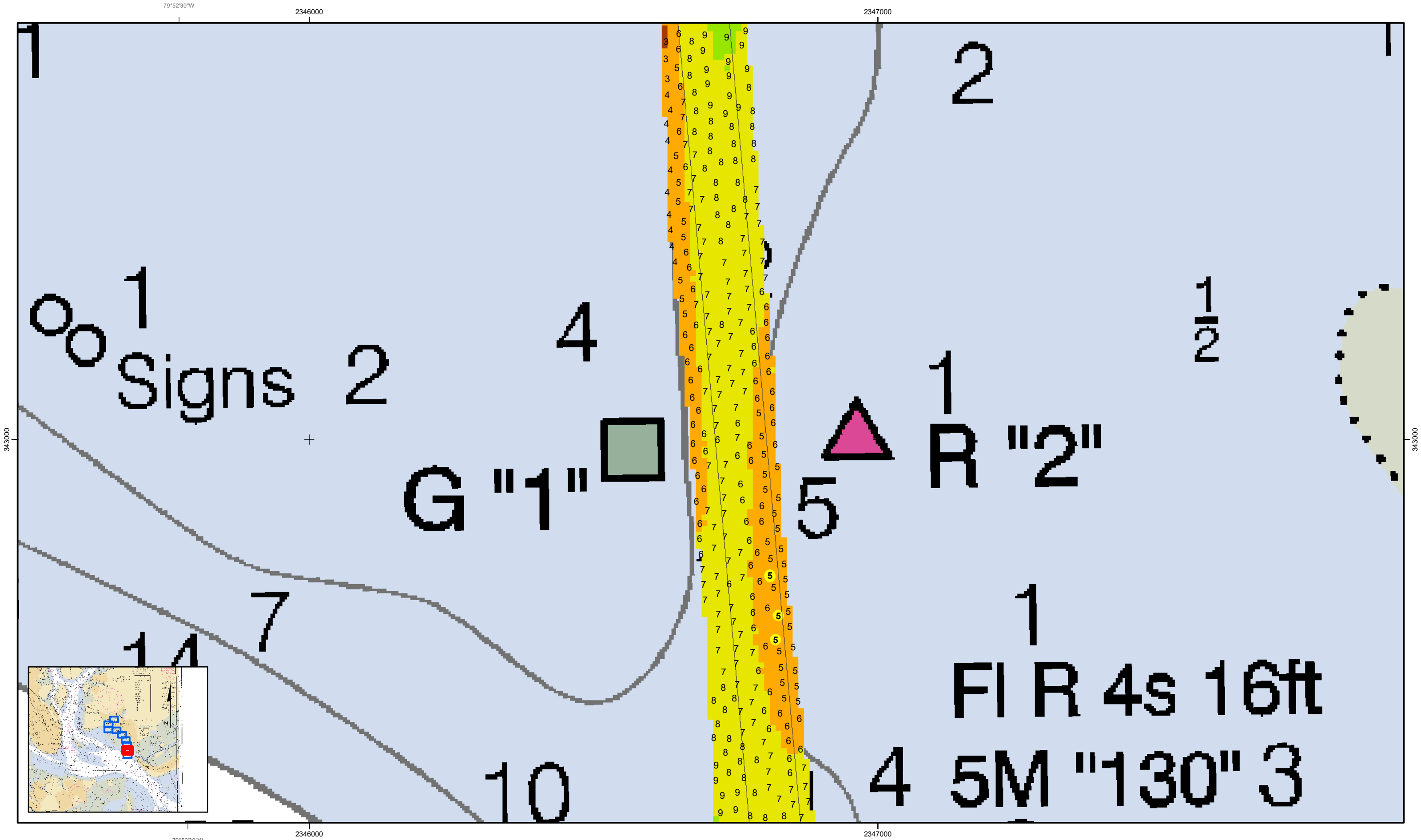
E

W

Production Notes:
1. The information depicted on this product is for plotting purposes only.
2. Vector hydrographic data derived from surveys conducted by the USACE and approved partners to Mean Lower Low Water (MLLW).
3. Soundings are in feet and refer to Mean Lower Low Water (MLLW).
4. Raster Background: Panaharpard Worldview-2 imagery dated 2014.

In no event shall the U.S. Army Corps of Engineers, Charleston District Office, Spatial Data Branch be liable for direct, indirect, incidental, consequential or special damages of any kind, including, but not limited to, loss of anticipated profits or benefits arising out of use of or reliance on the data.
These data sets have been developed from the best available sources. Although efforts have been made to ensure that the datasets are accurate and reliable, errors and variable conditions originating from physical sources used to develop the data may be reflected in the data supplied.
This product is not intended to be used for navigation.
Mariners are encouraged to use all prudent safety measures.

U.S. Army Corps
of Engineers
Charleston District



Page 2 of 9

SHEET
REFERENCE
NUMBER
C002

Shem Creek
The information depicted on this map represents the results of surveys made on the dates indicated and can only be considered as indicating the general conditions existing at that time.
Concluded on: **25 APR 2023**
Mount Pleasant, South Carolina

U.S. ARMY ENGINEER DISTRICT CORPS OF ENGINEERS CHARLESTON, SOUTH CAROLINA	Designed By: eHydro Software v3.82	Survey Date: 25 APR 2023	Production Date: 1 MAY 2023
SPATIAL DATA BRANCH 69A HAGOOD AVE CHARLESTON, SC 29403	Reviewed By: CCW	Absolute Scale: 1:1,800	Project Reference Number: CESAC-PRA-0002
CESAC-GIS@USACE.ARMY.MIL	Reference Scale: 1 inch = 150 feet	Survey Type: CONDITION	
	Projection: NAD 1983 StatePlane South Carolina FIPS 3900 Feet		

Shoalest Sounding
● Sounding
Sounding may cover several point areas and is calculated per reach quarter area
"+" indicates sounding above MLLW

USCG Beacon
■ Green
▲ Red
□ White

USCG Buoy
● Green
● Red
● Coast Guard Racon

White
● Yellow
● USCG Light

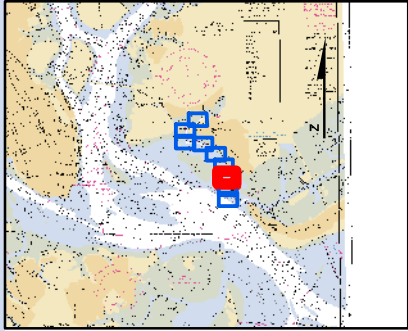
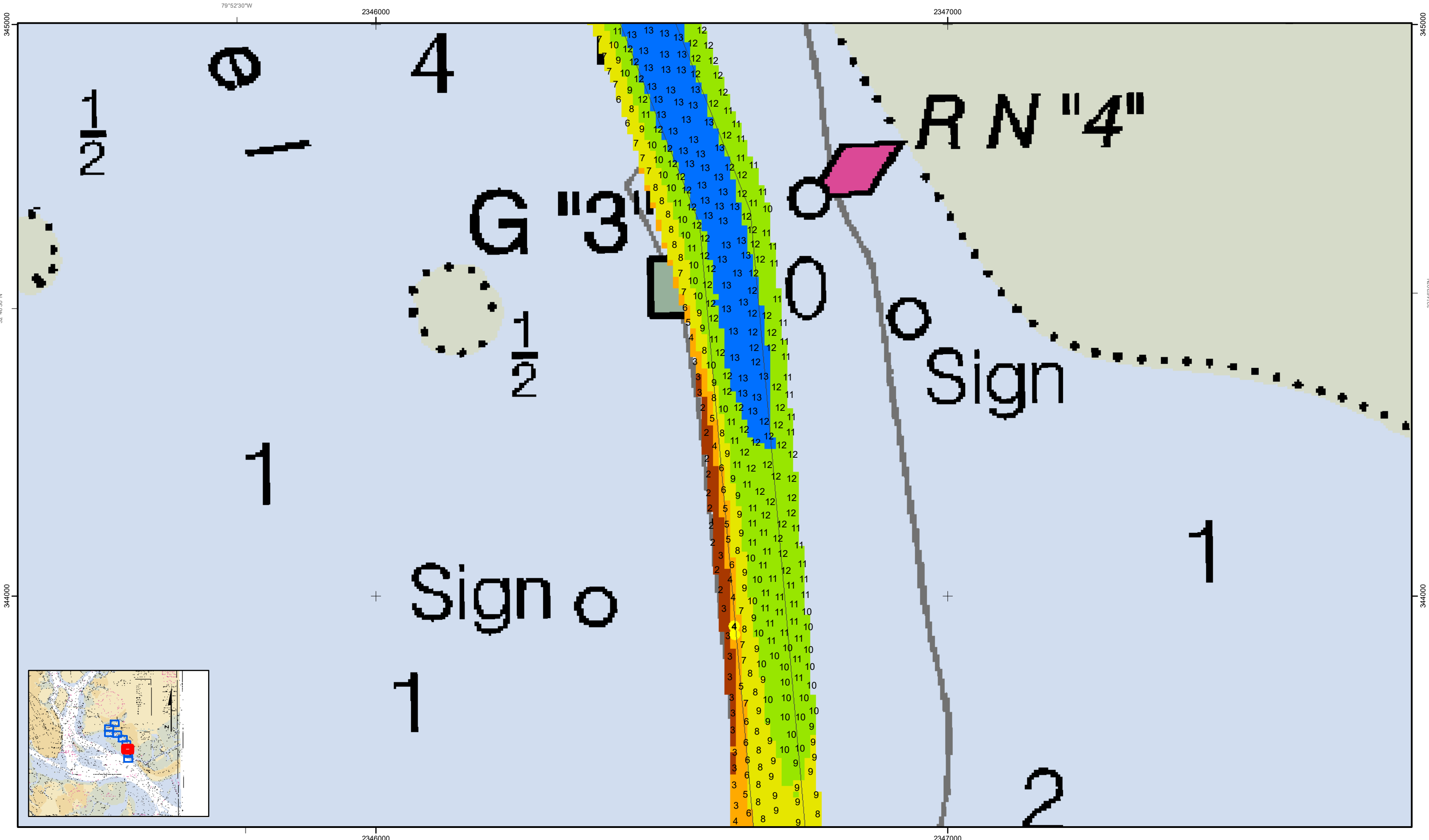
Depth in feet
■ 0-3 ■ 3 to 6 ■ 6 to 9 ■ 9 to 12 ■ Greater Than 12

0 250 500 Feet

Production Notes:
1. The information depicted on this product is for plotting purposes only.
2. Vector hydrographic data derived from surveys conducted by the USACE and approved partners to Mean Lower Low Water (MLLW).
3. Soundings are in feet and refer to the date of the survey.
4. Raster Background: Panoramaplex Worldview-2 imagery dated 2014.

In no event shall the U.S. Army Corps of Engineers, Charleston District Office, Spatial Data Branch be liable for direct, indirect, incidental, consequential or special damages of any kind, including, but not limited to, loss of anticipated profits or benefits arising out of use of or reliance on the data.
These data sets have been developed from the best available sources. Although efforts have been made to ensure that the datasets are accurate and reliable, errors and variable conditions originating from physical sources used to develop the data may be reflected in the data supplied.
This product is not intended to be used for navigation. Mariners are encouraged to use all prudent safety measures.

U.S. Army Corps of Engineers
Charleston District



Page 3 of 9

SHEET
REFERENCE
NUMBER
C002

Shem Creek
The information depicted on this map represents the results of surveys made on the dates indicated and can only be considered as indicating the general conditions existing at that time.
Concluded on: **25 APR 2023**
Mount Pleasant, South Carolina

U.S. ARMY ENGINEER DISTRICT CORPS OF ENGINEERS CHARLESTON, SOUTH CAROLINA		Designed By: eHydro Software v3.82	Survey Date: 25 APR 2023	Production Date: 1 MAY 2023
SPATIAL DATA BRANCH 69A HAGOOD AVE CHARLESTON, SC 29403		Reviewed By: CCW	Absolute Scale: 1:1,800	Project Reference Number: CESAC-PRA-0002
CESAC-GIS@USACE.ARMY.MIL		Reference Scale: 1 inch = 150 feet	Survey Type: CONDITION	
Projection: NAD 1983 StatePlane South Carolina FIPS 3900 Feet				

Shoalest Sounding
● Sounding
Sounding may cover several point areas and is calculated per reach quarter area
"+" indicates sounding above MLLW

USCG Beacon
■ Green
▲ Red
□ White

USCG Buoy
● Green
● Red
● Coast Guard Racon

White
● White
● Yellow
● USCG Light

Depth in feet
■ 0-3 ■ 3 to 6 ■ 6 to 9 ■ 9 to 12 ■ Greater Than 12

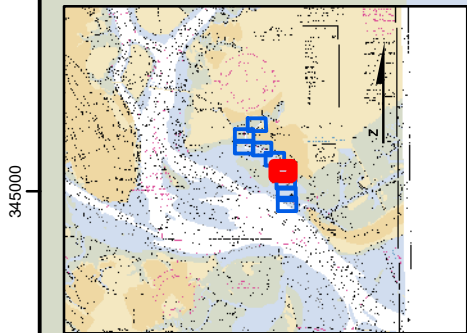
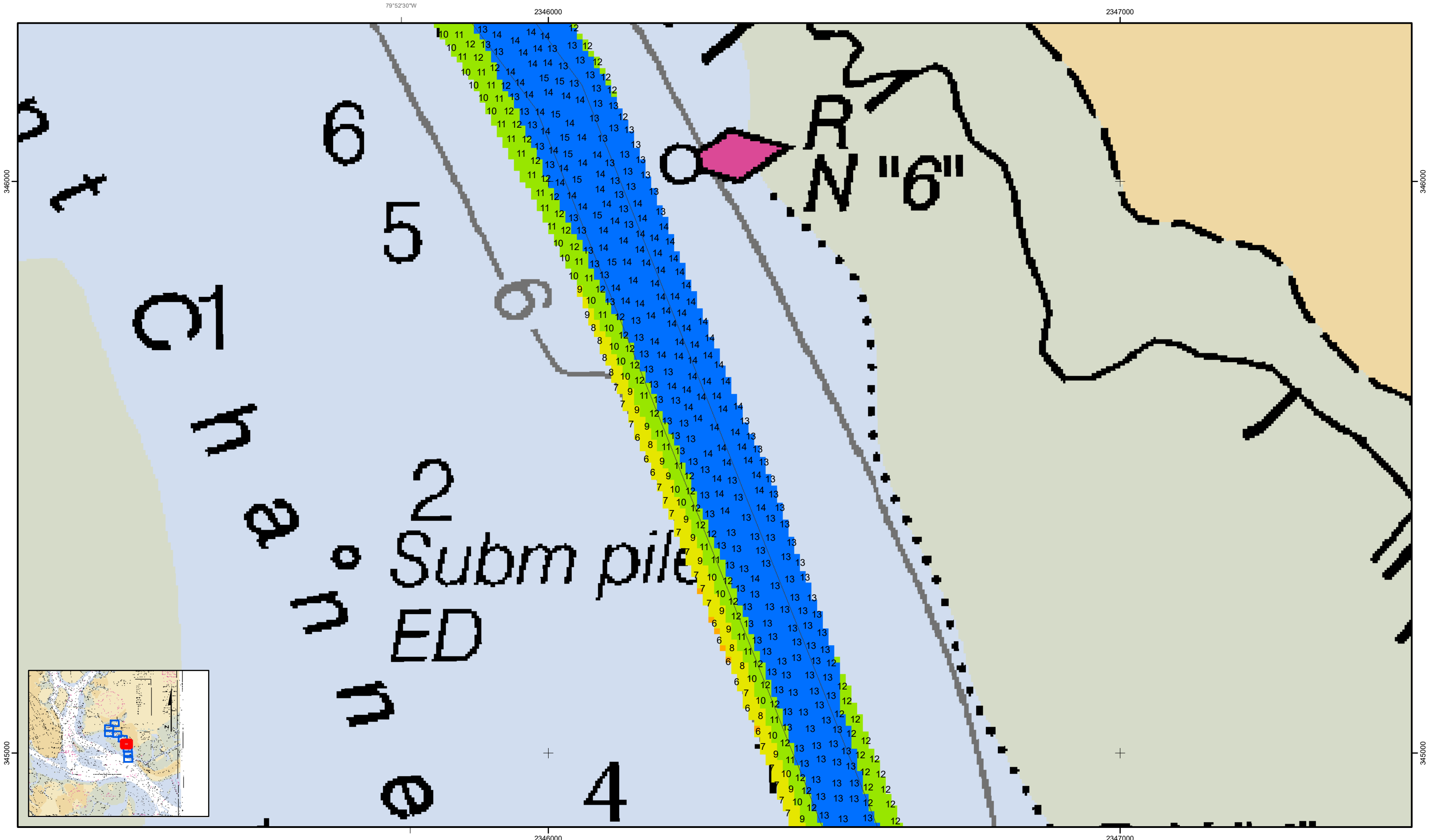
0250500

Feet

Production Notes:
1. The information depicted on this product is for plotting purposes only
2. Vector hydrographic data derived from surveys conducted by the USACE and approved partners to Mean Lower Low Water (MLLW)
3. Soundings are in feet and refer to Mean Lower Low Water (MLLW)
4. Raster Background: Panaharpened Worldview-2 imagery dated 2014

In no event shall the U.S. Army Corps of Engineers, Charleston District Office, Spatial Data Branch be liable for direct, indirect, incidental, consequential or special damages of any kind, including, but not limited to, loss of anticipated profits or benefits arising out of use of or reliance on the data.
These data sets have been developed from the best available sources. Although efforts have been made to ensure that the datasets are accurate and reliable, errors and variable conditions originating from physical sources used to develop the data may be reflected in the data supplied.
This product is not intended to be used for navigation.
Mariners are encouraged to use all prudent safety measures.

U.S. Army Corps of Engineers
Charleston District



Page 4 of 9

SHEET
REFERENCE
NUMBER
C002

Shem Creek
The information depicted on this map represents the results of surveys made on the dates indicated and can only be considered as indicating the general conditions existing at that time.
Concluded on: **25 APR 2023**
Mount Pleasant, South Carolina

U.S. ARMY ENGINEER DISTRICT CORPS OF ENGINEERS CHARLESTON, SOUTH CAROLINA		Designed By: eHydro Software v3.82	Survey Date: 25 APR 2023	Production Date: 1 MAY 2023
SPATIAL DATA BRANCH 69A HAGOOD AVE CHARLESTON, SC 29403		Reviewed By: CCW	Absolute Scale: 1:1,800	Project Reference Number: CESAC-PRA-0002
CESAC-GIS@USACE.ARMY.MIL		Reference Scale: 1 inch = 150 feet	Survey Type: CONDITION	
Projection: NAD 1983 StatePlane South Carolina FIPS 3900 Feet				

Shoalest Sounding

● Sounding
Sounding may cover several point areas and is calculated per reach quarter area
"4" indicates sounding above MLLW

USCG Beacon

■ Green
▲ Red
□ White

USCG Buoy

● Green
● Red
● Coast Guard Racon

○ White
○ Yellow
○ USCG Light

Depth in feet

0-3 3 to 6 6 to 9 9 to 12 Greater Than 12

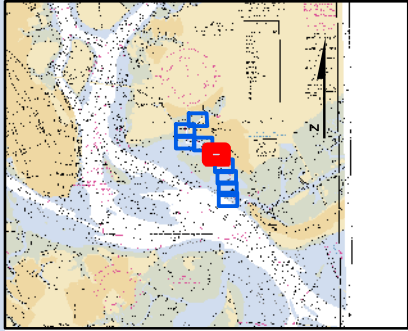
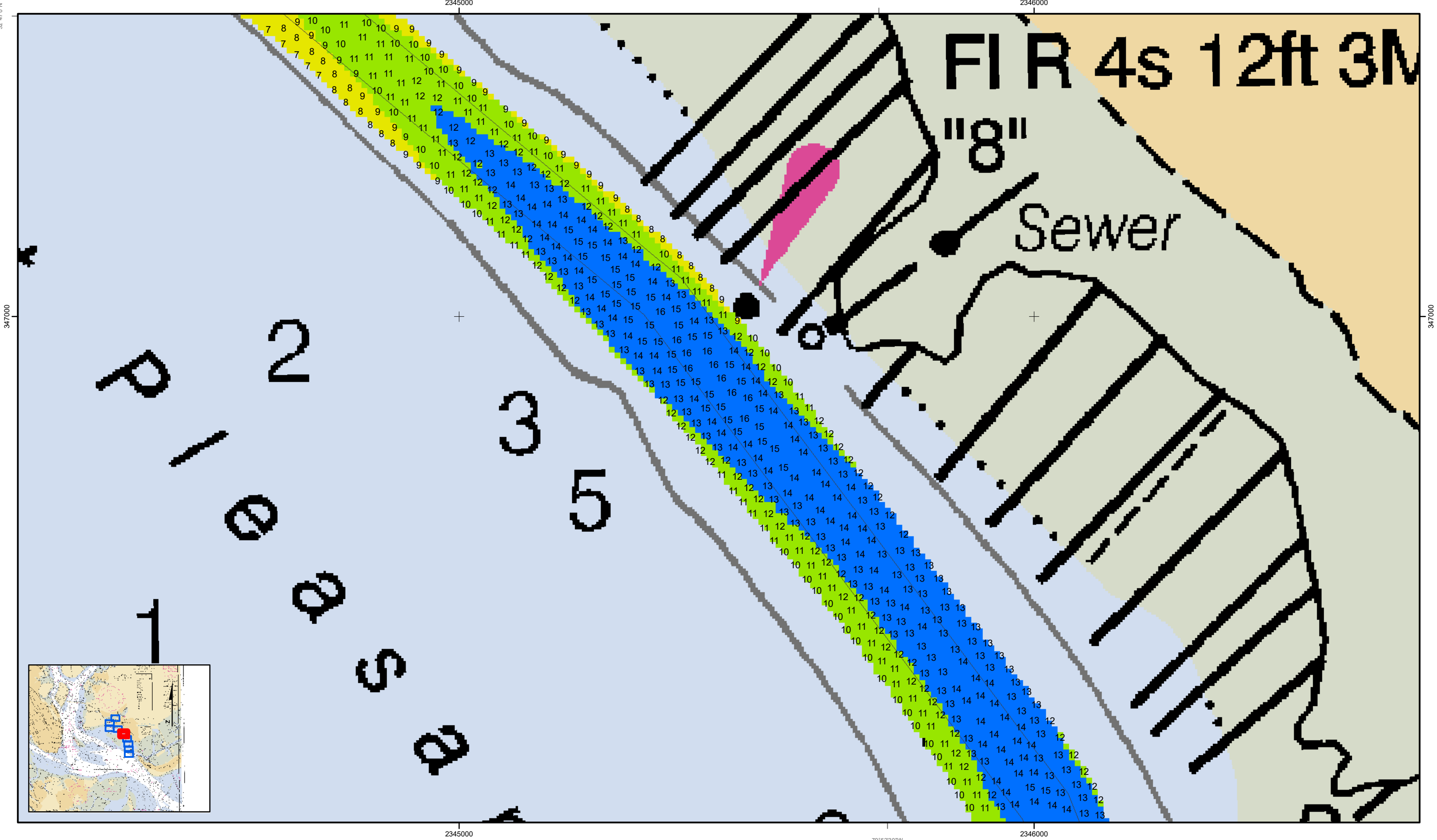
0 250 500 Feet

Production Notes:

1. The information depicted on this product is for plotting purposes only
2. Vector hydrographic data derived from surveys conducted by the USACE and approved partners to Mean Lower Low Water (MLLW)
3. Soundings are in feet and refer to Mean Lower Low Water (MLLW)
4. Raster Background: Panaharpard Worldview-2 imagery dated 2014

In no event shall the U.S. Army Corps of Engineers, Charleston District Office, Spatial Data Branch be liable for direct, indirect, incidental, consequential or special damages of any kind, including, but not limited to, loss of anticipated profits or benefits arising out of use of or reliance on the data.
These data sets have been developed from the best available sources. Although efforts have been made to ensure that the datasets are accurate and reliable, errors and variable conditions originating from physical sources used to develop the data may be reflected in the data supplied.
This product is not intended to be used for navigation.
Mariners are encouraged to use all prudent safety measures.

U.S. Army Corps of Engineers
Charleston District



Page 5 of 9

C002

SHEET
REFERENCE
NUMBER

Shem Creek

The information depicted on this map represents the results of surveys made on the dates indicated and can only be considered as indicating the general conditions existing at that time.

Concluded on: 25 APR 2023

Mount Pleasant, South Carolina

U.S. ARMY ENGINEER DISTRICT
CORPS OF ENGINEERS
CHARLESTON, SOUTH CAROLINA

SPATIAL DATA BRANCH
69A HAGOOD AVE
CHARLESTON, SC 29403
CESAC-GIS@USACE.ARMY.MIL

Designed By:
eHydro Software v3.82

Reviewed By:
CCW

Reference Scale:
1 inch = 150 feet

Projection:
NAD 1983 StatePlane South Carolina FIPS 3900 Feet

Survey Date:
25 APR 2023

Production Date:
1 MAY 2023

Project Reference Number:
CESAC-PRA-0002

Survey Type:
CONDITION

Shoalest Sounding

● Sounding

Sounding may cover several point areas and is calculated per reach quarter area

"+" indicates sounding above MLLW

USCG Beacon

■ Green

▲ Red

□ White

USCG Light

USCG Buoy

● Green

● Red

● Coast Guard Racon

Depth in feet

0-3

3 to 6

6 to 9

9 to 12

Greater Than 12

White

Yellow

USCG Light

0

250

500

Feet

N

W

E

S

Production Notes:

1. The information depicted on this product is for plotting purposes only

2. Vector hydrographic data derived from surveys conducted by the USACE and approved partners

3. Soundings are in feet and refer to Mean Lower Low Water (MLLW)

4. Raster Background: Panoramaplex Worldview-2 imagery dated 2014

In no event shall the U.S. Army Corps of Engineers, Charleston District Office, Spatial Data Branch be liable for direct, indirect, incidental, consequential or special damages of any kind, including, but not limited to, loss of anticipated profits or benefits arising out of use of or reliance on the data.

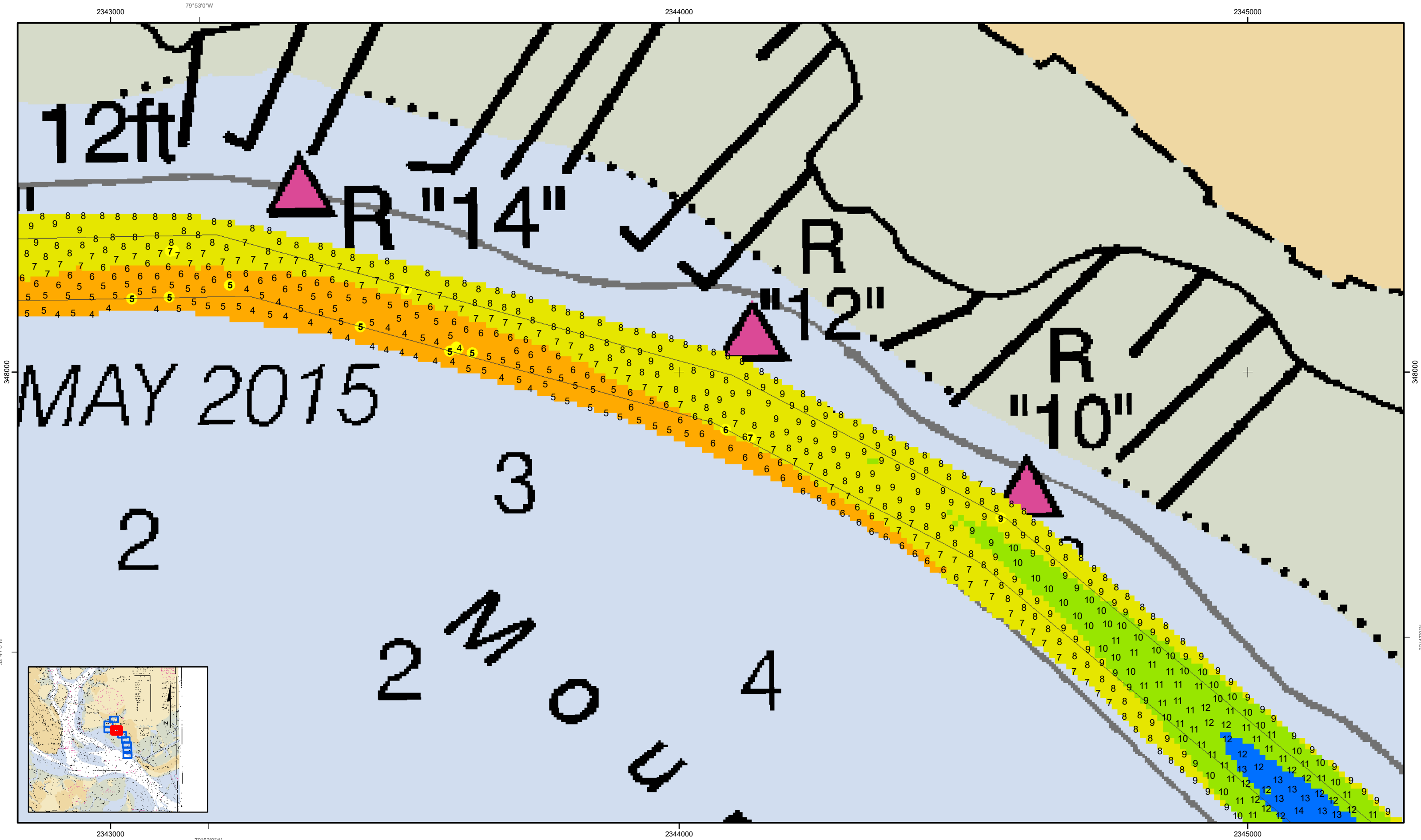
These data sets have been developed from the best available sources. Although efforts have been made to ensure that the datasets are accurate and reliable, errors and variable conditions originating from physical sources used to develop the data may be reflected in the data supplied.

This product is not intended to be used for navigation.

Mariners are encouraged to use all prudent safety measures.

U.S. Army Corps
of Engineers

Charleston District



Page 6 of 9

SHEET
REFERENCE
NUMBER
C002

Shem Creek
The information depicted on this map represents the results of surveys made on the dates indicated and can only be considered as indicating the general conditions existing at that time.
Concluded on: **25 APR 2023**
Mount Pleasant, South Carolina

U.S. ARMY ENGINEER DISTRICT CORPS OF ENGINEERS CHARLESTON, SOUTH CAROLINA	Designed By: eHydro Software v3.82	Survey Date: 25 APR 2023	Production Date: 1 MAY 2023
SPATIAL DATA BRANCH 69A HAGOOD AVE CHARLESTON, SC 29403	Reviewed By: CCW	Absolute Scale: 1:1,800	Project Reference Number: CESAC-PRA-0002
CESAC-GIS@USACE.ARMY.MIL	Reference Scale: 1 inch = 150 feet	Survey Type: CONDITION	
	Projection: NAD 1983 StatePlane South Carolina FIPS 3900 Feet		

Shoalest Sounding
Sounding may cover several point areas and is calculated per reach quarter area
"+" indicates sounding above MLLW

USCG Beacon
Green
Red
White

USCG Buoy
Green
Red
Coast Guard Racon

White
Yellow
USCG Light

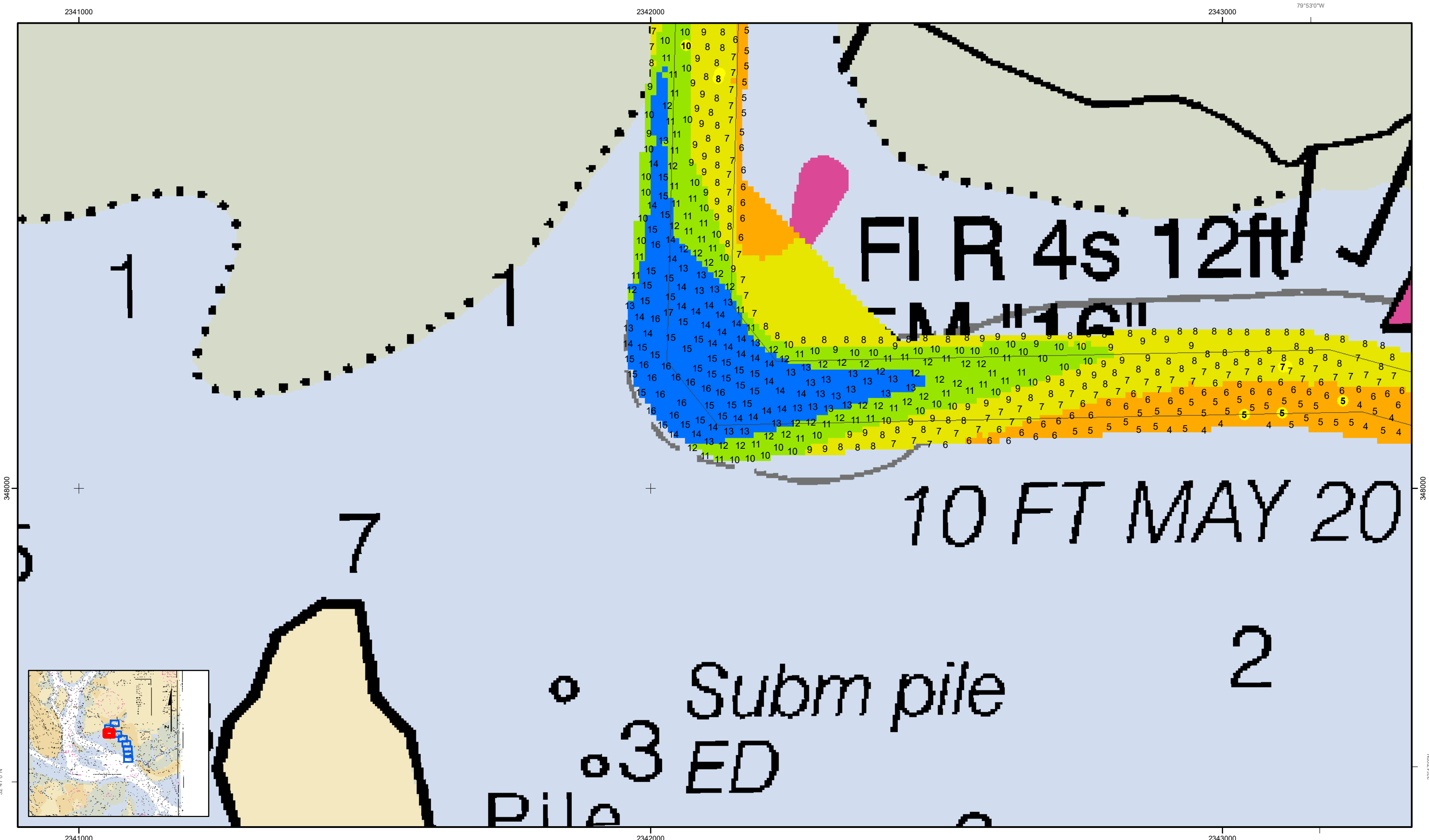
Depth in feet
0-3
3 to 6
6 to 9
9 to 12
Greater Than 12

0 250 500 Feet

Production Notes:
1. The information depicted on this product is for plotting purposes only.
2. Vector hydrographic data derived from surveys conducted by the USACE and approved partners to Mean Lower Low Water (MLLW).
3. Soundings are in feet and refer to Mean Lower Low Water (MLLW).
4. Raster Background: Panhandle Worldview-2 imagery dated 2014.

In no event shall the U.S. Army Corps of Engineers, Charleston District Office, Spatial Data Branch be liable for direct, indirect, incidental, consequential or special damages of any kind, including, but not limited to, loss of anticipated profits or benefits arising out of use of or reliance on the data.
These data sets have been developed from the best available sources. Although efforts have been made to ensure that the datasets are accurate and reliable, errors and variable conditions originating from physical sources used to develop the data may be reflected in the data supplied.
This product is not intended to be used for navigation.
Mariners are encouraged to use all prudent safety measures.

U.S. Army Corps of Engineers
Charleston District



2341000

2342000

2343000

2344000

348000

348000

348000

348000

2341000

2342000

2343000

2344000

32°47'0"N

32°47'0"N

32°47'0"N

32°47'0"N

Shem Creek

The information depicted on this map represents the results of surveys made on the dates indicated and can only be considered as indicating the general conditions existing at that time.

Concluded on: 25 APR 2023

Mount Pleasant, South Carolina

U.S. ARMY ENGINEER DISTRICT
CORPS OF ENGINEERS
CHARLESTON, SOUTH CAROLINA

SPATIAL DATA BRANCH
69A HAGOOD AVE
CHARLESTON, SC 29403

CESAC-GIS@USACE.ARMY.MIL

Designed By:
eHydro Software v3.82

Reviewed By:
CCW

Reference Scale:
1 inch = 150 feet

Projection:
NAD 1983 StatePlane South Carolina FIPS 3900 Feet

Survey Date:
25 APR 2023

Production Date:
1 MAY 2023

Project Reference Number:
CESAC-PRA-0002

Survey Type:
CONDITION

Shoalest Sounding

● Sounding

Sounding may cover several point areas and is calculated per reach quarter area

"+" indicates sounding above MLLW

USCG Beacon

■ Green

▲ Red

□ White

USCG Light

USCG Buoy

● Green

● Red

● Coast Guard Racon

White

Yellow

USCG Light

Depth in feet

0-3

3 to 6

6 to 9

9 to 12

Greater Than 12

0

250

500

Feet

N

E

S

W

Production Notes:

1. The information depicted on this product is for plotting purposes only

2. Vector hydrographic data derived from surveys conducted by the USACE and approved partners

3. Soundings are in feet and refer to Mean Lower Low Water (MLLW)

4. Raster Background: Panharpened Worldview-2 imagery dated 2014

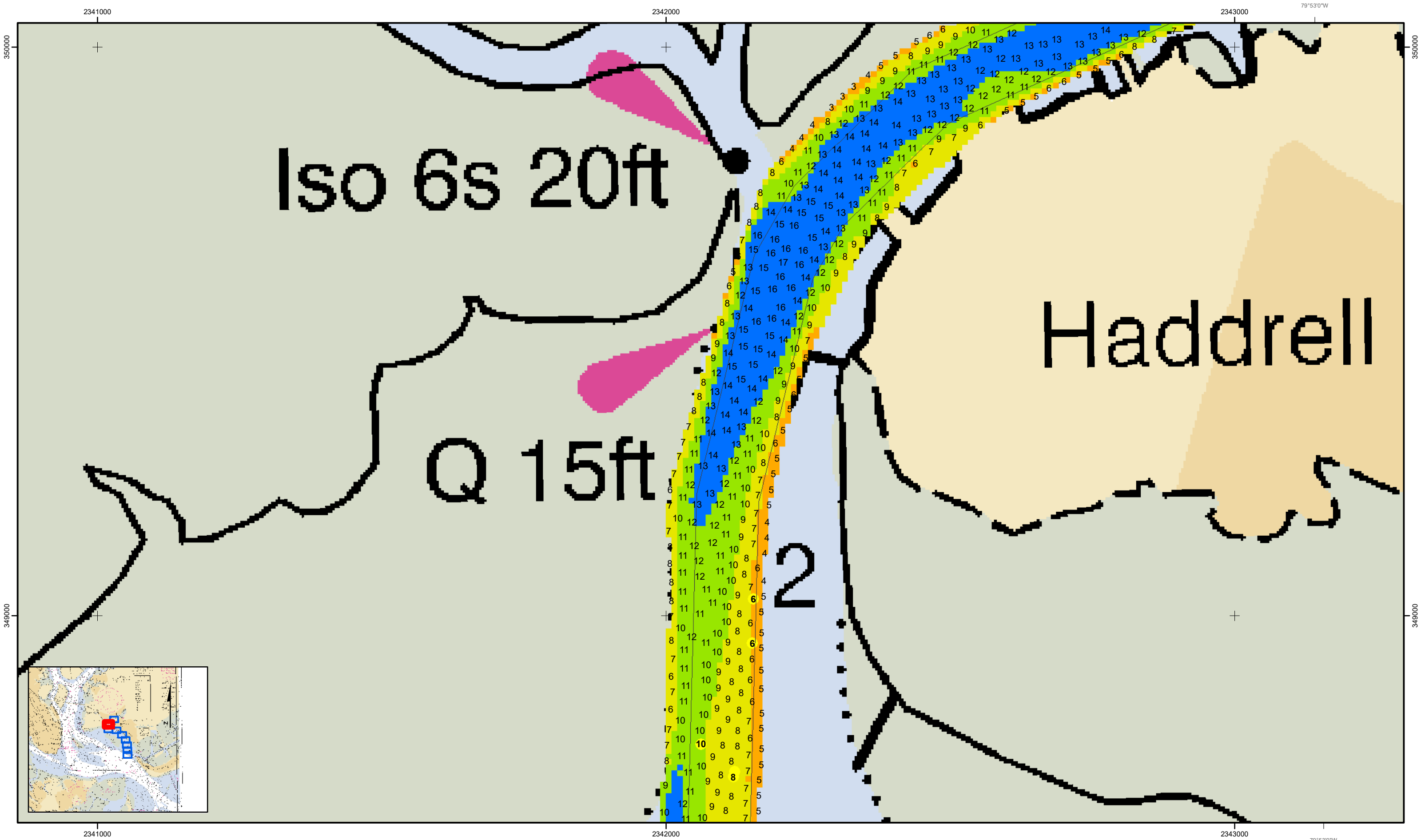
In no event shall the U.S. Army Corps of Engineers, Charleston District Office, Spatial Data Branch be liable for direct, indirect, incidental, consequential or special damages of any kind, including, but not limited to, loss of anticipated profits or benefits arising out of use of or reliance on the data.

These data sets have been developed from the best available sources. Although efforts have been made to ensure that the datasets are accurate and reliable, errors and variable conditions originating from physical sources used to develop the data may be reflected in the data supplied.

This product is not intended to be used for navigation. Mariners are encouraged to use all prudent safety measures.

U.S. Army Corps of Engineers

Charleston District



Page 8 of 9

SHEET
REFERENCE
NUMBER
C002

Shem Creek
The information depicted on this map represents the results of surveys made on the dates indicated and can only be considered as indicating the general conditions existing at that time.
Concluded on: **25 APR 2023**
Mount Pleasant, South Carolina

U.S. ARMY ENGINEER DISTRICT CORPS OF ENGINEERS CHARLESTON, SOUTH CAROLINA		Designed By: eHydro Software v3.82	Survey Date: 25 APR 2023	Production Date: 1 MAY 2023
SPATIAL DATA BRANCH 69A HAGOOD AVE CHARLESTON, SC 29403		Reviewed By: CCW	Absolute Scale: 1:1,800	Project Reference Number: CESAC-PRA-0002
CESAC-GIS@USACE.ARMY.MIL		Reference Scale: 1 inch = 150 feet	Survey Type: CONDITION	
Projection: NAD 1983 StatePlane South Carolina FIPS 3900 Feet				

Shoalest Sounding

● Sounding
Sounding may cover several point areas and is calculated per reach quarter area
"+" indicates sounding above MLLW

USCG Beacon

■ Green
▲ Red
□ White

USCG Buoy

● Green
● Red
● Coast Guard Racon
● USCG Light

Depth in feet

● White
● Yellow
● USCG Light

0-3 3 to 6 6 to 9 9 to 12 Greater Than 12

0 250 500 Feet

Production Notes:

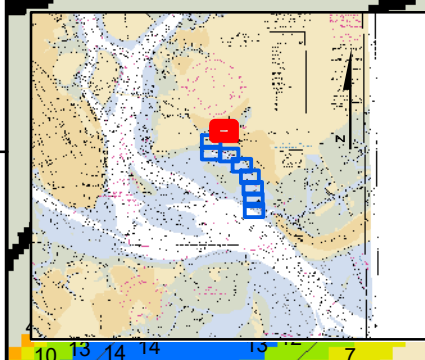
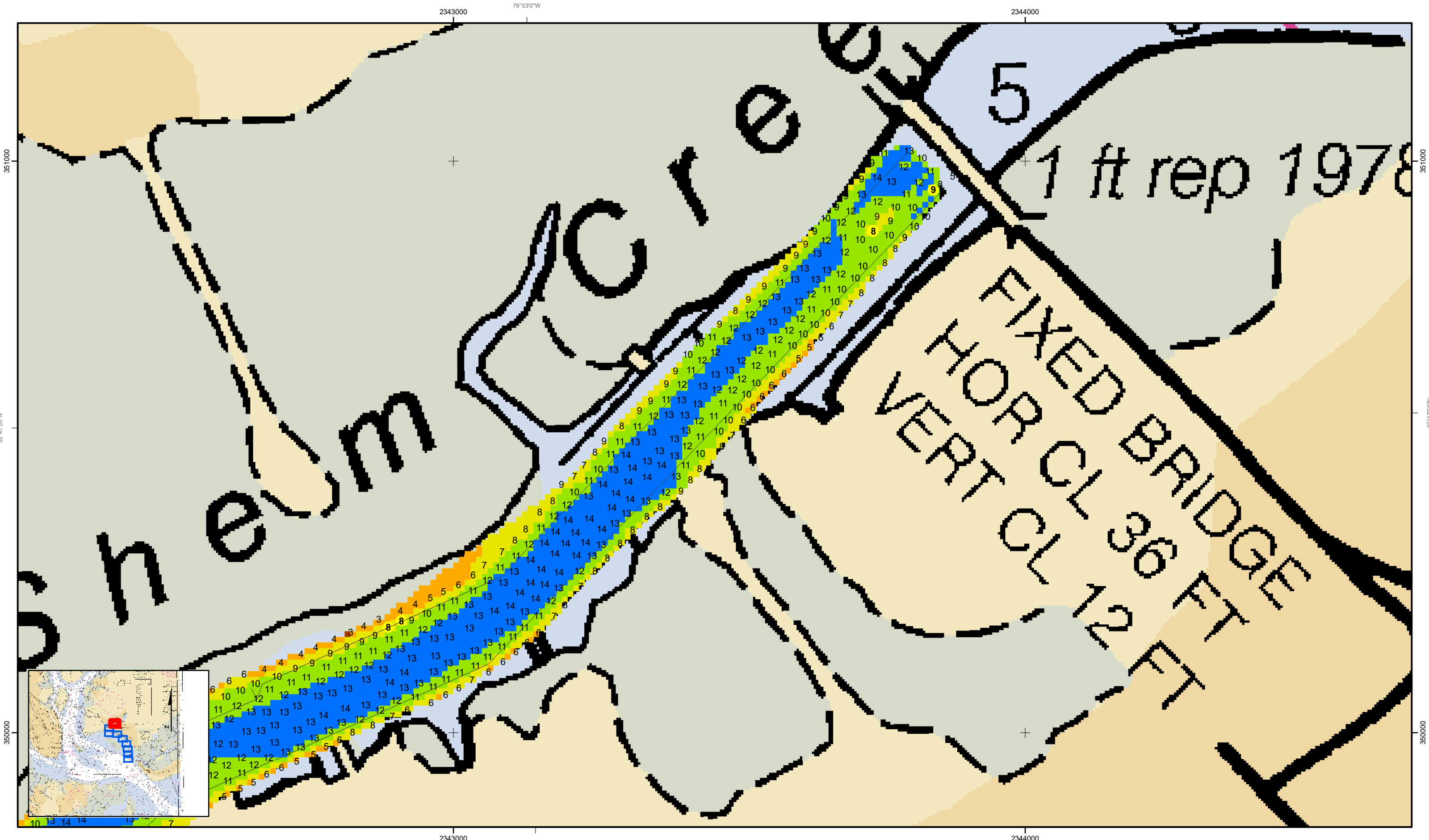
1. The information depicted on this product is for plotting purposes only.
2. Vector hydrographic data derived from surveys conducted by the USACE and approved partners to Mean Lower Low Water (MLLW).
3. Soundings are in feet and refer to Mean Lower Low Water (MLLW).
4. Raster Background: Panaharpened Worldview-2 imagery dated 2014.

In no event shall the U.S. Army Corps of Engineers, Charleston District Office, Spatial Data Branch be liable for direct, indirect, incidental, consequential or special damages of any kind, including, but not limited to, loss of anticipated profits or benefits arising out of use of or reliance on the data.

These data sets have been developed from the best available sources. Although efforts have been made to ensure that the datasets are accurate and reliable, errors and variable conditions originating from physical sources used to develop the data may be reflected in the data supplied.

This product is not intended to be used for navigation.
Mariners are encouraged to use all prudent safety measures.

U.S. Army Corps of Engineers
Charleston District



Page 9 of 9

SHEET
REFERENCE
NUMBER
C002

Shem Creek

The information depicted on this map represents the results of surveys made on the dates indicated and can only be considered as indicating the general conditions existing at that time.

Concluded on: **25 APR 2023**

Mount Pleasant, South Carolina

U.S. ARMY ENGINEER DISTRICT CORPS OF ENGINEERS CHARLESTON, SOUTH CAROLINA		Designed By: eHydro Software v3.82	Survey Date: 25 APR 2023	Production Date: 1 MAY 2023
SPATIAL DATA BRANCH 69A HAGOOD AVE CHARLESTON, SC 29403		Reviewed By: CCW	Absolute Scale: 1:1,800	Project Reference Number: CESAC-PRA-0002
CESAC-GIS@USACE.ARMY.MIL		Reference Scale: 1 inch = 150 feet	Survey Type: CONDITION	
Projection: NAD 1983 StatePlane South Carolina FIPS 3900 Feet				

Shoalest Sounding

● Sounding

Sounding may cover several point areas and is calculated per reach quarter area

"+" indicates sounding above MLLW

USCG Beacon

■ Green

▲ Red

□ White

USCG Buoy

● Green

● Red

● Coast Guard Racon

● USCG Light

Depth in feet

0-3 3 to 6 6 to 9 9 to 12 Greater Than 12

0 250 500 Feet

Production Notes:

- The information depicted on this product is for plotting purposes only.
- Vector hydrographic data derived from surveys conducted by the USACE and approved partners.
- Soundings are in feet and refer to Mean Lower Low Water (MLLW).
- Raster Background: Panaharpard Worldview-2 imagery dated 2014.

In no event shall the U.S. Army Corps of Engineers, Charleston District Office, Spatial Data Branch be liable for direct, indirect, incidental, consequential or special damages of any kind, including, but not limited to, loss of anticipated profits or benefits arising out of use of or reliance on the data.

These data sets have been developed from the best available sources. Although efforts have been made to ensure that the datasets are accurate and reliable, errors and variable conditions originating from physical sources used to develop the data may be reflected in the data supplied.

This product is not intended to be used for navigation.

Mariners are encouraged to use all prudent safety measures.

U.S. Army Corps of Engineers
Charleston District