

Shem Creek
 The information depicted on this map represents the results of surveys made on the dates indicated and can only be considered as indicating the general conditions existing at that time.
 Concluded on: **17 SEP 2024**
 Mount Pleasant, South Carolina

U.S. ARMY ENGINEER DISTRICT CORPS OF ENGINEERS CHARLESTON, SOUTH CAROLINA		Reviewed By: CCW	Absolute Scale: 1:1,800	Survey Date: 17 SEP 2024	Production Date: 19 SEP 2024
SPATIAL DATA BRANCH 69A HAGOOD AVE CHARLESTON, SC 29403		Project Reference Number: CESAC-PRA-0002	Reference Scale: 1 inch = 150 feet	Survey Type: CONDITION	
CESAC-GIS@USACE.ARMY.MIL		Projection: NAD 1983 NSRS2007 StatePlane South Carolina FIPS 3900 Ft Intl			

Shoalest Sounding

Sounding
 Sounding may cover several point areas and is calculated per reach quarter area
 "*" indicates sounding above MLLW



Production Notes:

- The information depicted on this product is for plotting purposes only
- Vector hydrographic data derived from surveys conducted by the USACE and approved partners
- Soundings are in feet and refer to Mean Lower Low Water (MLLW)
- Raster Backgrounds: Panoramapoint WorldView2 Imagery dated 2014

In no event shall the U.S. Army Corps of Engineers, Charleston District Office, Spatial Data Branch be liable for direct, indirect, incidental, consequential or special damages of any kind, including, but not limited to, loss of anticipated profits or benefits arising out of use of or reliance on the data.
 These data sets have been developed from the best available sources. Although efforts have been made to ensure that the data sets are accurate and reliable, errors and variable conditions originating from physical sources used to develop the data may be reflected in the data supplied.
 This product is not intended to be used for navigation.
 Mariners are encouraged to use all prudent safety measures.



342000

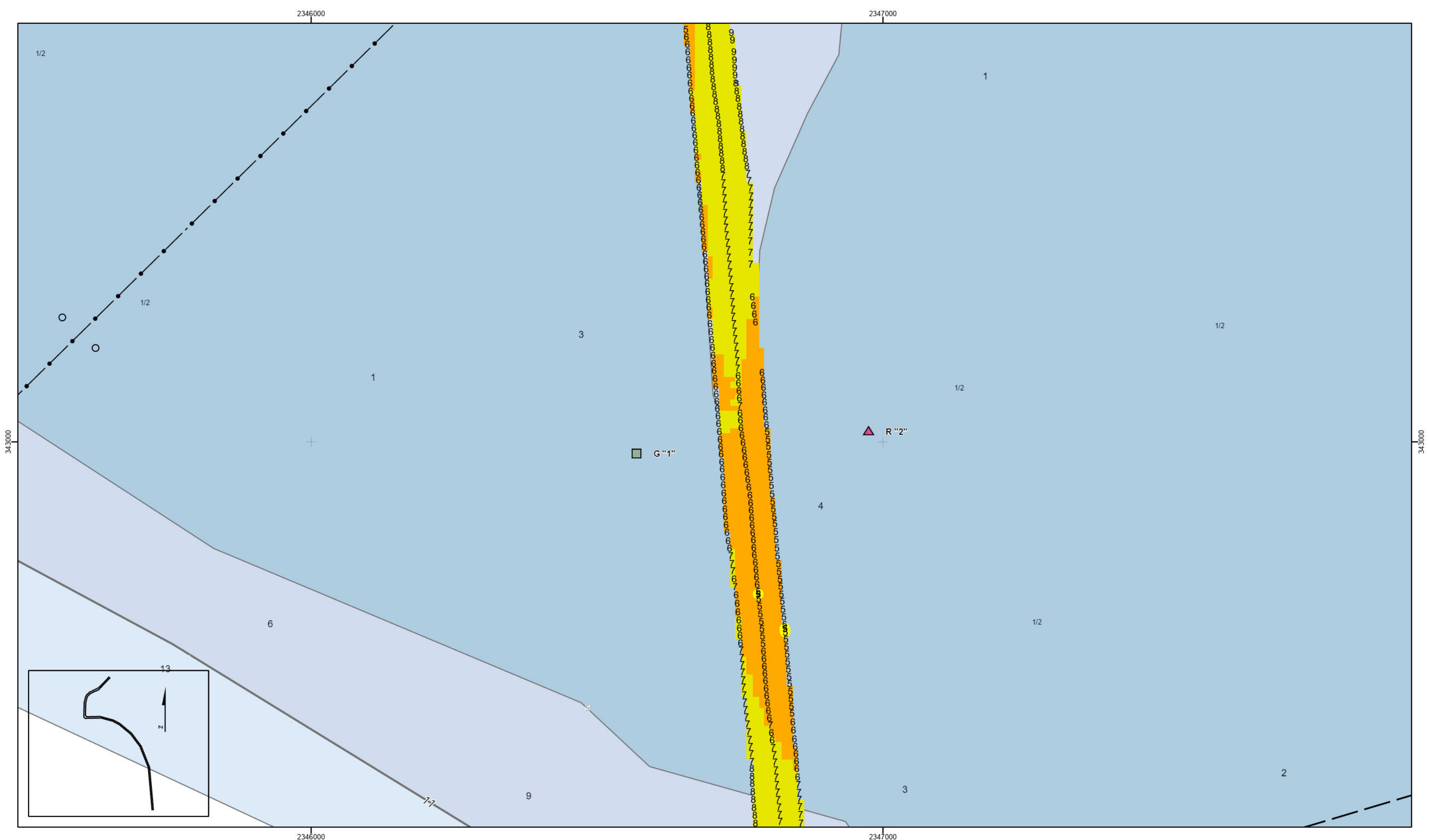
342000

2346000

2347000

2346000

2347000

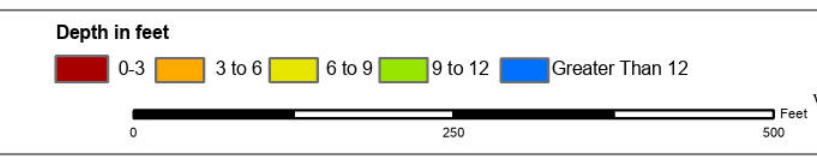


Shem Creek
 The information depicted on this map represents the results of surveys made on the dates indicated and can only be considered as indicating the general conditions existing at that time.
 Concluded on: 17 SEP 2024
 Mount Pleasant, South Carolina

U.S. ARMY ENGINEER DISTRICT CORPS OF ENGINEERS CHARLESTON, SOUTH CAROLINA		Reviewed By: CCW	Absolute Scale: 1:1,800	Survey Date: 17 SEP 2024	Production Date: 19 SEP 2024
SPATIAL DATA BRANCH 69A HAGOOD AVE CHARLESTON, SC 29403		Project Reference Number: CESAC-PRA-0002	Survey Type: CONDITION		
CESAC-GIS@USACE.ARMY.MIL		Reference Scale: 1 inch = 150 feet	Projection: NAD 1983 NSRS2007 StatePlane South Carolina FIPS 3900 Ft Intl		

Shoalest Sounding

Sounding
 Sounding may cover several point areas and is calculated per reach quarter area
 "+" indicates sounding above MLLW



Production Notes:

- The information depicted on this product is for plotting purposes only
- Vector hydrographic data derived from surveys conducted by the USACE and approved partners
- Soundings are in feet and refer to Mean Lower Low Water (MLLW)
- Raster Backgrounds: Panoramapoint WorldView2 Imagery dated 2014

In no event shall the U.S. Army Corps of Engineers, Charleston District Office, Spatial Data Branch be liable for direct, indirect, incidental, consequential or special damages of any kind, including, but not limited to, loss of anticipated profits or benefits arising out of use of or reliance on the data.

These data sets have been developed from the best available sources. Although efforts have been made to ensure that the datasets are accurate and reliable, errors and variable conditions originating from physical sources used to develop the data may be reflected in the data supplied.

This product is not intended to be used for navigation.
 Mariners are encouraged to use all prudent safety measures.



343000

343000

2346000

2347000

2346000

2347000

1/2

1/2

1

3

G "1"

R "2"

4

1/2

6

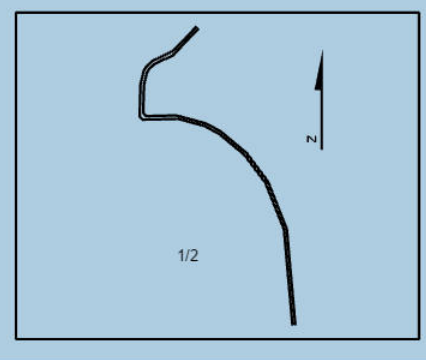
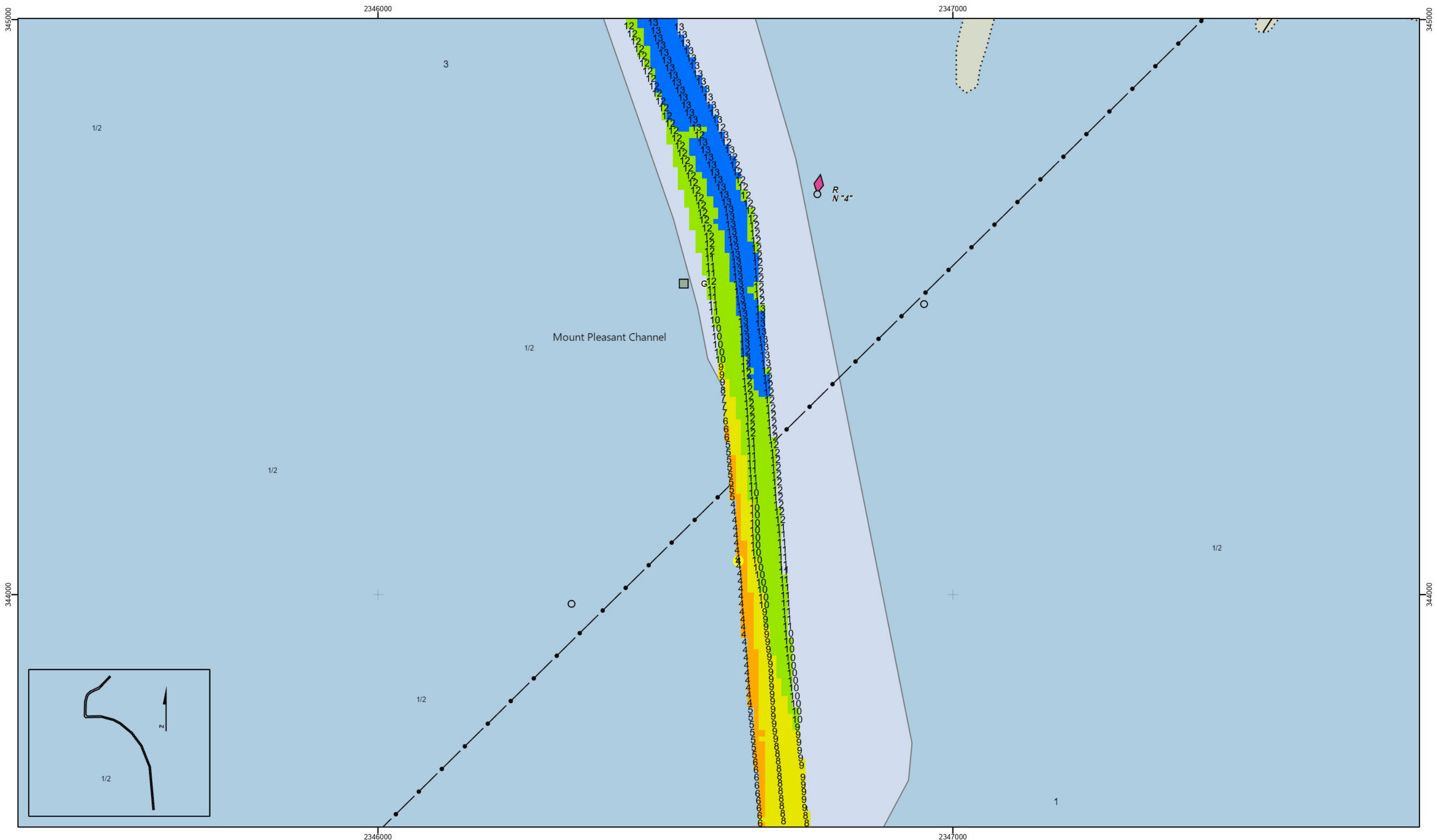
1/2

13

9

3


2



Shem Creek
 The information depicted on this map represents the results of surveys made on the dates indicated and can only be considered as indicating the general conditions existing at that time.
 Concluded on: **17 SEP 2024**
 Mount Pleasant, South Carolina

U.S. ARMY ENGINEER DISTRICT CORPS OF ENGINEERS CHARLESTON, SOUTH CAROLINA		Reviewed By: CCW	Absolute Scale: 1:1,800	Project Reference Number: CESAC-PRA-0002	Survey Date: 17 SEP 2024	Production Date: 19 SEP 2024
SPATIAL DATA BRANCH 66A HAGOOD AVE. CHARLESTON, SC 29403		Reference Scale: 1 inch = 150 feet	Survey Type: CONDITION			
CESAC-GIS@USACE.ARMY.MIL		Projection: NAD 1983 NSRS2007 StatePlane South Carolina FIPS 3900 Ft Intl				

Shoalest Sounding



Sounding
 Sounding may cover several point areas and is calculated per reach quarter area
 "*" indicates sounding above MLLW



Production Notes:

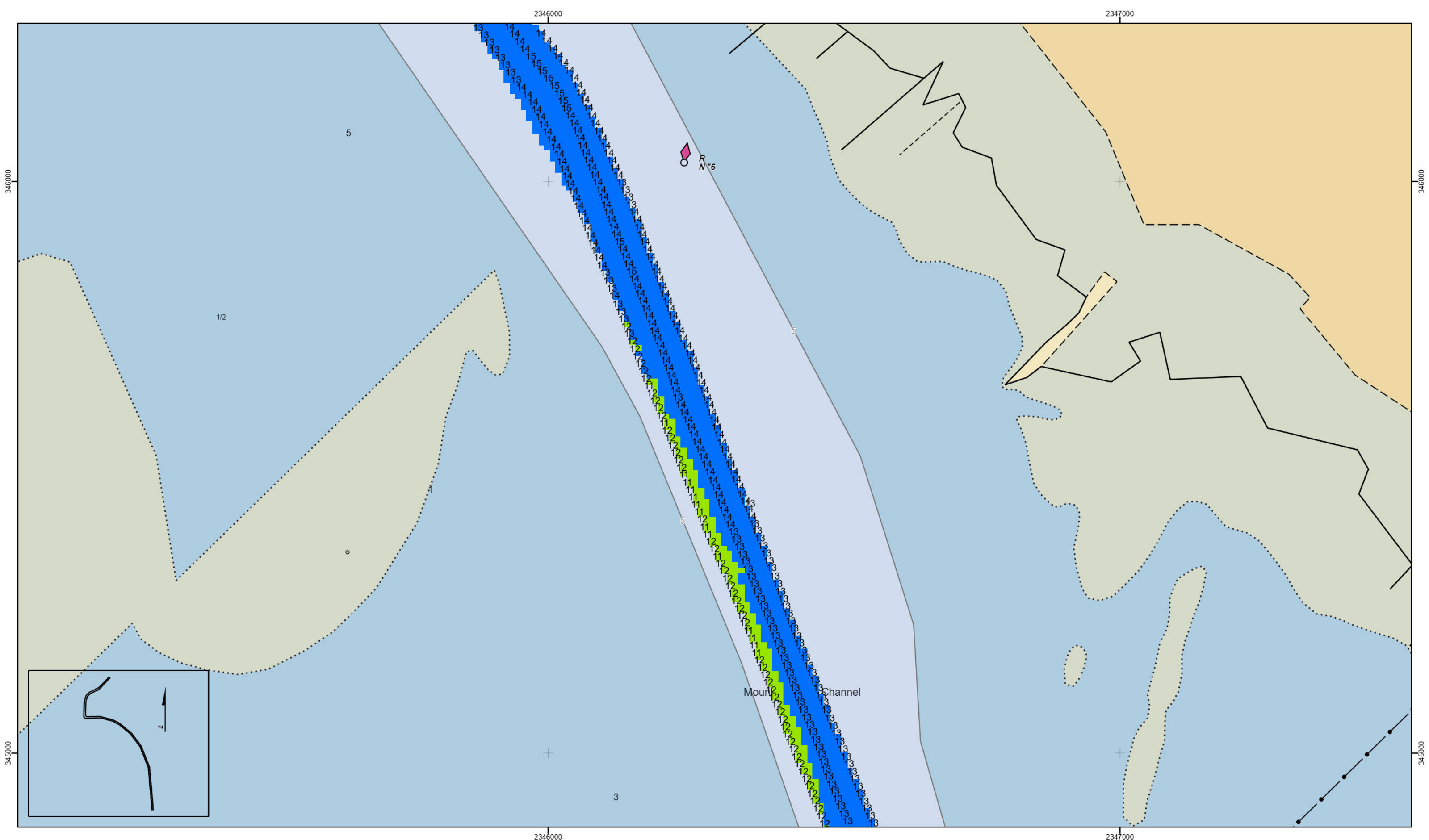
- The information depicted on this product is for plotting purposes only.
- Vector hydrographic data derived from surveys conducted by the USACE and approved partners.
- Soundings are in feet and refer to Mean Lower Low Water (MLLW).
- Raster Backgrounds: Panhandle/Westview2 Imagery dated 2014.

In no event shall the U.S. Army Corps of Engineers, Charleston District Office, Spatial Data Branch be liable for direct, indirect, incidental, consequential or special damages of any kind, including, but not limited to, loss of anticipated profits or benefits arising out of use of or reliance on the data.
 These data sets have been developed from the best available sources. Although efforts have been made to ensure that the datasets are accurate and reliable, errors and variable conditions originating from physical sources used to develop the data may be reflected in the data supplied.
 This product is not intended to be used for navigation.
 Mariners are encouraged to use all prudent safety measures.




345000
344000
SHEET REFERENCE NUMBER C002
Page 3 of 9

2346000 2347000
345000
344000

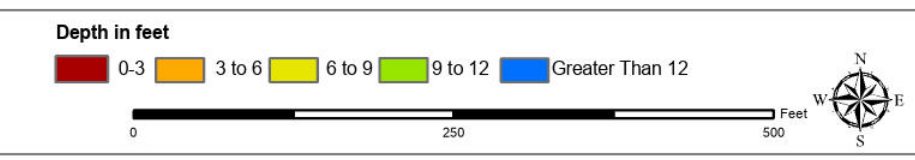


Shem Creek
 The information depicted on this map represents the results of surveys made on the dates indicated and can only be considered as indicating the general conditions existing at that time.
 Concluded on: **17 SEP 2024**
 Mount Pleasant, South Carolina

U.S. ARMY ENGINEER DISTRICT CORPS OF ENGINEERS CHARLESTON, SOUTH CAROLINA		Reviewed By: CCW	Absolute Scale: 1:1,800	Survey Date: 17 SEP 2024	Production Date: 19 SEP 2024
SPATIAL DATA BRANCH 69A HAGOOD AVE CHARLESTON, SC 29403 CESAC-GIS@USACE.ARMY.MIL		Project Reference Number: CESAC-PRA-0002	Reference Scale: 1 inch = 150 feet	Survey Type: CONDITION	
Projection: NAD 1983 NSRS2007 StatePlane South Carolina FIPS 3900 Ft Intl					

Shoalest Sounding


Sounding
 Sounding may cover several point areas and is calculated per reach quarter area
 "*" indicates sounding above MLLW



Production Notes:

- The information depicted on this product is for plotting purposes only.
- Vector hydrographic data derived from surveys conducted by the USACE and approved partners.
- Soundings are in feet and refer to Mean Lower Low Water (MLLW).
- Raster Background: Panhandle/Westview2 Imagery dated 2014.

In no event shall the U.S. Army Corps of Engineers, Charleston District Office, Spatial Data Branch be liable for direct, indirect, incidental, consequential or special damages of any kind, including, but not limited to, loss of anticipated profits or benefits arising out of use of or reliance on the data.

These data sets have been developed from the best available sources. Although efforts have been made to ensure that the datasets are accurate and reliable, errors and variable conditions originating from physical sources used to develop the data may be reflected in the data supplied.

This product is not intended to be used for navigation.
 Mariners are encouraged to use all prudent safety measures.



346000
345000
3445000

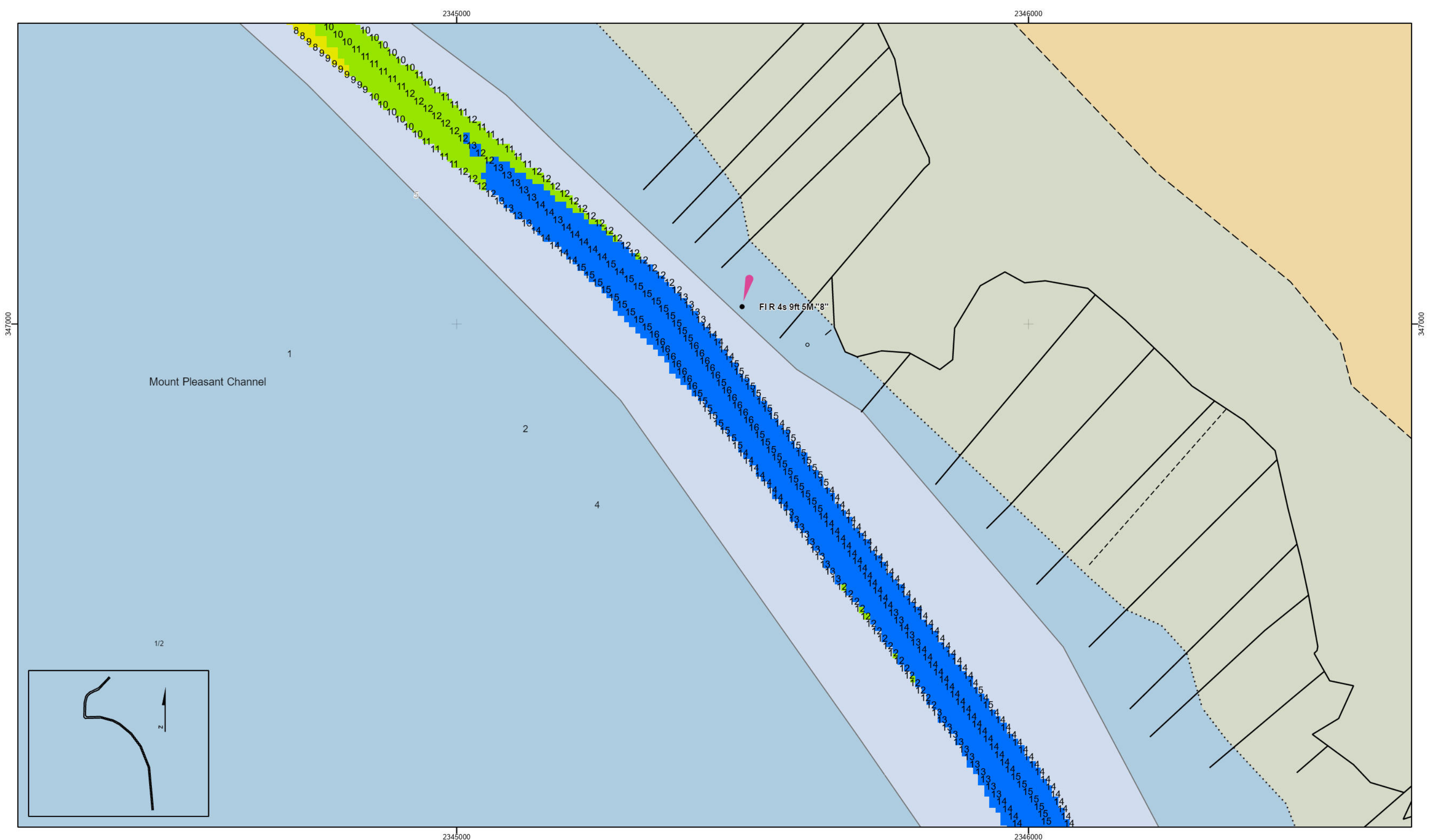
2346000
2347000
345000

2346000

2347000


2346000

2347000

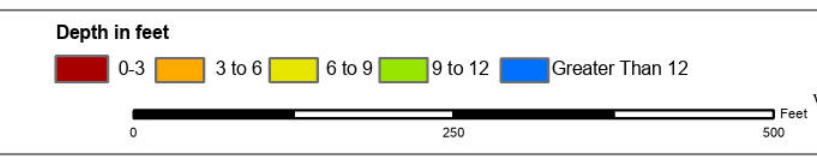


Shem Creek
 The information depicted on this map represents the results of surveys made on the dates indicated and can only be considered as indicating the general conditions existing at that time.
 Concluded on: 17 SEP 2024
 Mount Pleasant, South Carolina

U.S. ARMY ENGINEER DISTRICT CORPS OF ENGINEERS CHARLESTON, SOUTH CAROLINA		Reviewed By: CCW	Absolute Scale: 1:1,800	Project Reference Number: CESAC-PRA-0002	Survey Date: 17 SEP 2024	Production Date: 19 SEP 2024
SPATIAL DATA BRANCH 69A HAGOOD AVE CHARLESTON, SC 29403 CESAC-GIS@USACE.ARMY.MIL		Reference Scale: 1 inch = 150 feet	Survey Type: CONDITION			
Projection: NAD 1983 NSRS2007 StatePlane South Carolina FIPS 3900 Ft Intl						

Shoalest Sounding 

Sounding
 Sounding may cover several point areas and is calculated per reach quarter area
 "*" indicates sounding above MLLW



Production Notes:

- The information depicted on this product is for plotting purposes only
- Vector hydrographic data derived from surveys conducted by the USACE and approved partners
- Soundings are in feet and refer to Mean Lower Low Water (MLLW)
- Raster Backgrounds: Panoramapoint Worldview2 Imagery dated 2014

In no event shall the U.S. Army Corps of Engineers, Charleston District Office, Spatial Data Branch be liable for direct, indirect, incidental, consequential or special damages of any kind, including, but not limited to, loss of anticipated profits or benefits arising out of use of or reliance on the data.

These data sets have been developed from the best available sources. Although efforts have been made to ensure that the datasets are accurate and reliable, errors and variable conditions originating from physical sources used to develop the data may be reflected in the data supplied.

This product is not intended to be used for navigation.
 Mariners are encouraged to use all prudent safety measures.



347000

347000

2345000

2346000

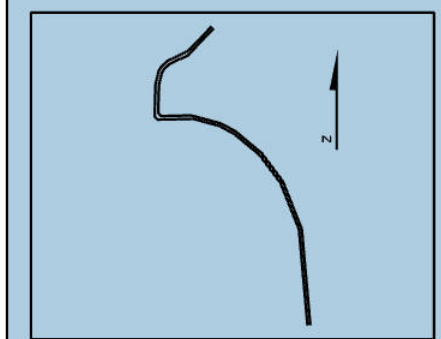
2345000

2346000

Mount Pleasant Channel

FIR 4s 9ft 5M "8"

1/2



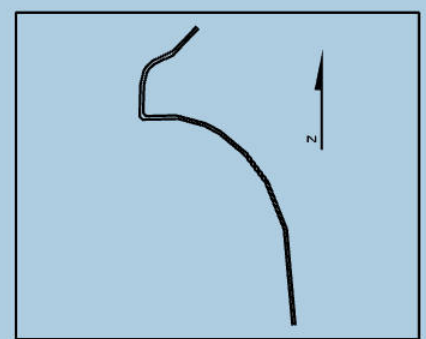
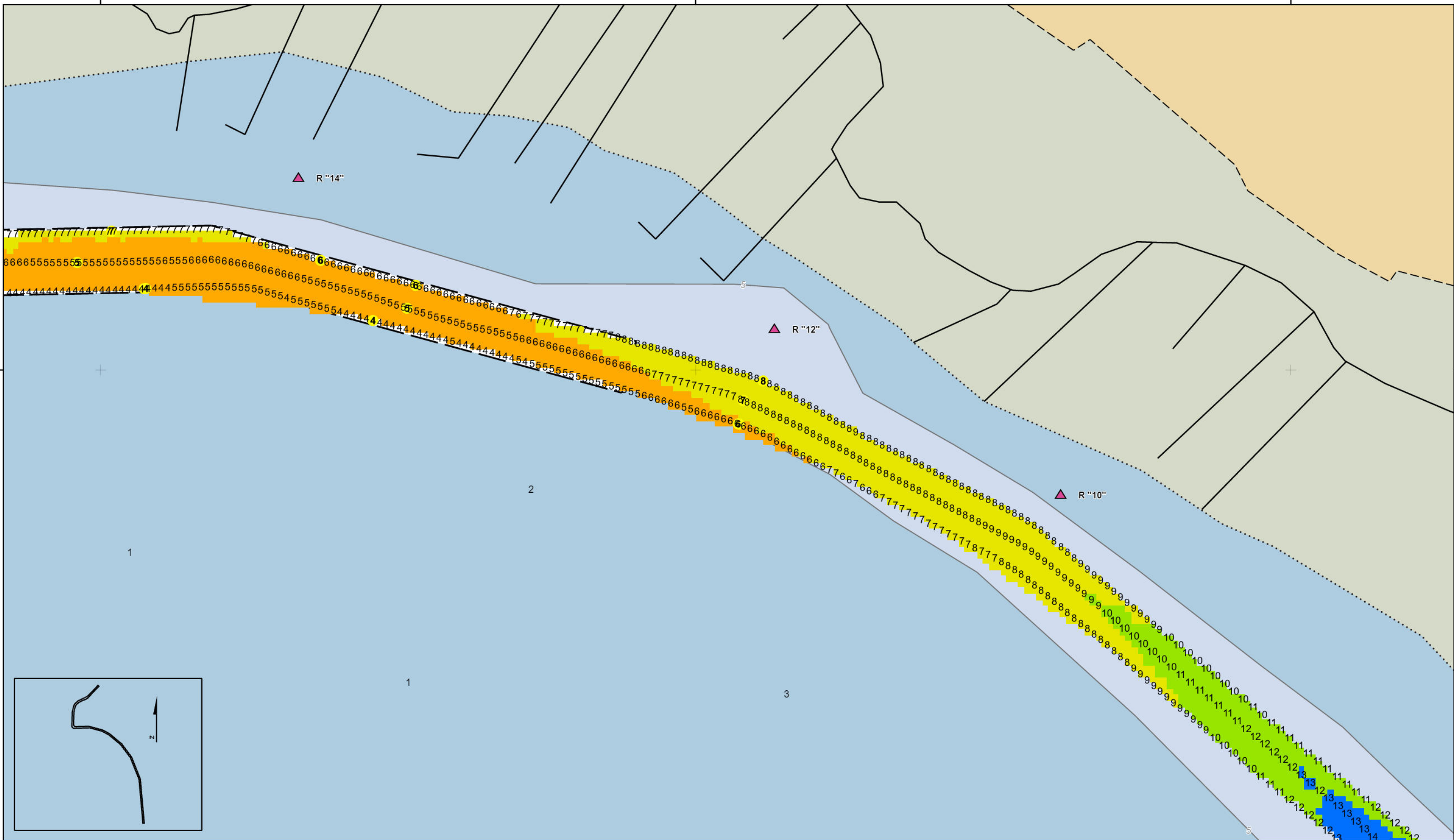
2343000

2344000

2345000

348000


348000



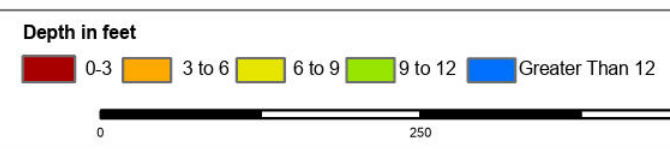
SHEET
REFERENCE
NUMBER
C002
Page 6 of 9

Shem Creek
The information depicted on this map represents the results of surveys made on the dates indicated and can only be considered as indicating the general conditions existing at that time.
Concluded on: 17 SEP 2024
Mount Pleasant, South Carolina

U.S. ARMY ENGINEER DISTRICT CORPS OF ENGINEERS CHARLESTON, SOUTH CAROLINA		Reviewed By: CCW	Absolute Scale: 1:1,800	Project Reference Number: CESAC-PRA-0002	Survey Date: 17 SEP 2024	Production Date: 19 SEP 2024
SPATIAL DATA BRANCH 69A HAGOOD AVE. CHARLESTON, SC 29403		Reference Scale: 1 inch = 150 feet	Survey Type: CONDITION		Projection: NAD 1983 NSRS2007 StatePlane South Carolina FIPS 3900 Ft Intl	
CESAC-GIS@USACE.ARMY.MIL						

Shoalest Sounding 

Sounding
Sounding may cover several point areas and is calculated per reach quarter area
"±" indicates sounding above MLLW



Production Notes:

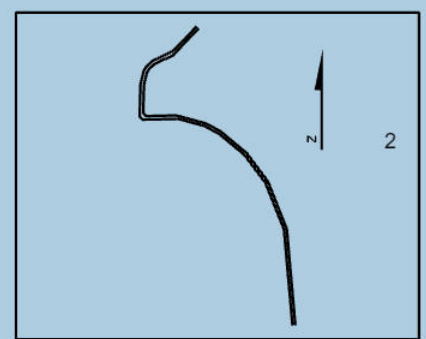
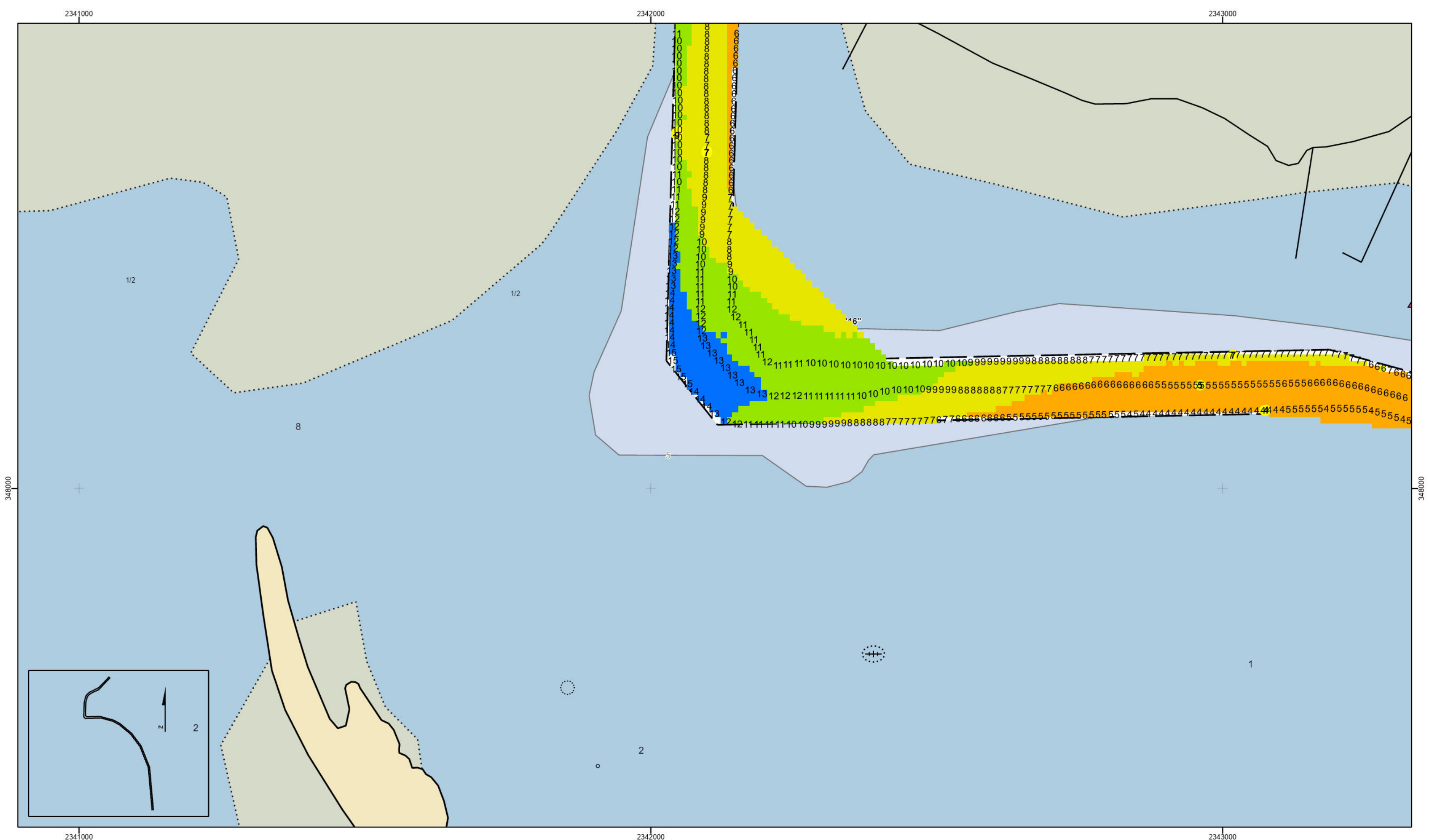
- The information depicted on this product is for plotting purposes only.
- Vector hydrographic data derived from surveys conducted by the USACE and approved partners.
- Soundings are in feet and refer to Mean Lower Low Water (MLLW).
- Raster Background: Panhandle/Westview2 Imagery dated 2014.

In no event shall the U.S. Army Corps of Engineers, Charleston District Office, Spatial Data Branch be liable for direct, indirect, incidental, consequential or special damages of any kind, including, but not limited to, loss of anticipated profits or benefits arising out of use of or reliance on the data.

These data sets have been developed from the best available sources. Although efforts have been made to ensure that the datasets are accurate and reliable, errors and variable conditions originating from physical sources used to develop the data may be reflected in the data supplied.

This product is not intended to be used for navigation. Mariners are encouraged to use all prudent safety measures.



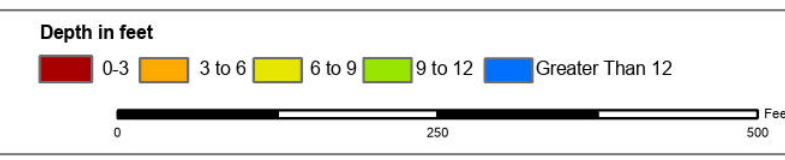


Shem Creek
 The information depicted on this map represents the results of surveys made on the dates indicated and can only be considered as indicating the general conditions existing at that time.
 Concluded on: **17 SEP 2024**
 Mount Pleasant, South Carolina

U.S. ARMY ENGINEER DISTRICT CORPS OF ENGINEERS CHARLESTON, SOUTH CAROLINA		Reviewed By: CCW	Absolute Scale: 1:1,800	Project Reference Number: CESAC-PRA-0002	Survey Date: 17 SEP 2024	Production Date: 19 SEP 2024
SPATIAL DATA BRANCH 69A HAGOOD AVE CHARLESTON, SC 29403		Reference Scale: 1 inch = 150 feet	Survey Type: CONDITION		Projection: NAD 1983 NSRS2007 StatePlane South Carolina FIPS 3900 Ft Intl	
CESAC-GIS@USACE.ARMY.MIL						

Shoalest Sounding

Sounding
 Sounding may cover several point areas and is calculated per reach quarter area
 "*" indicates sounding above MLLW

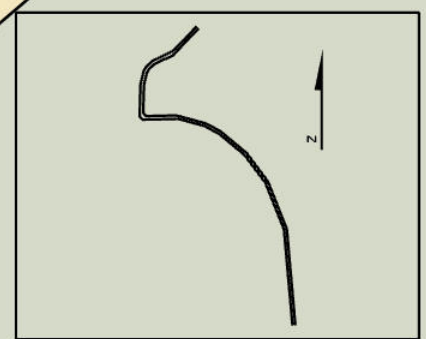
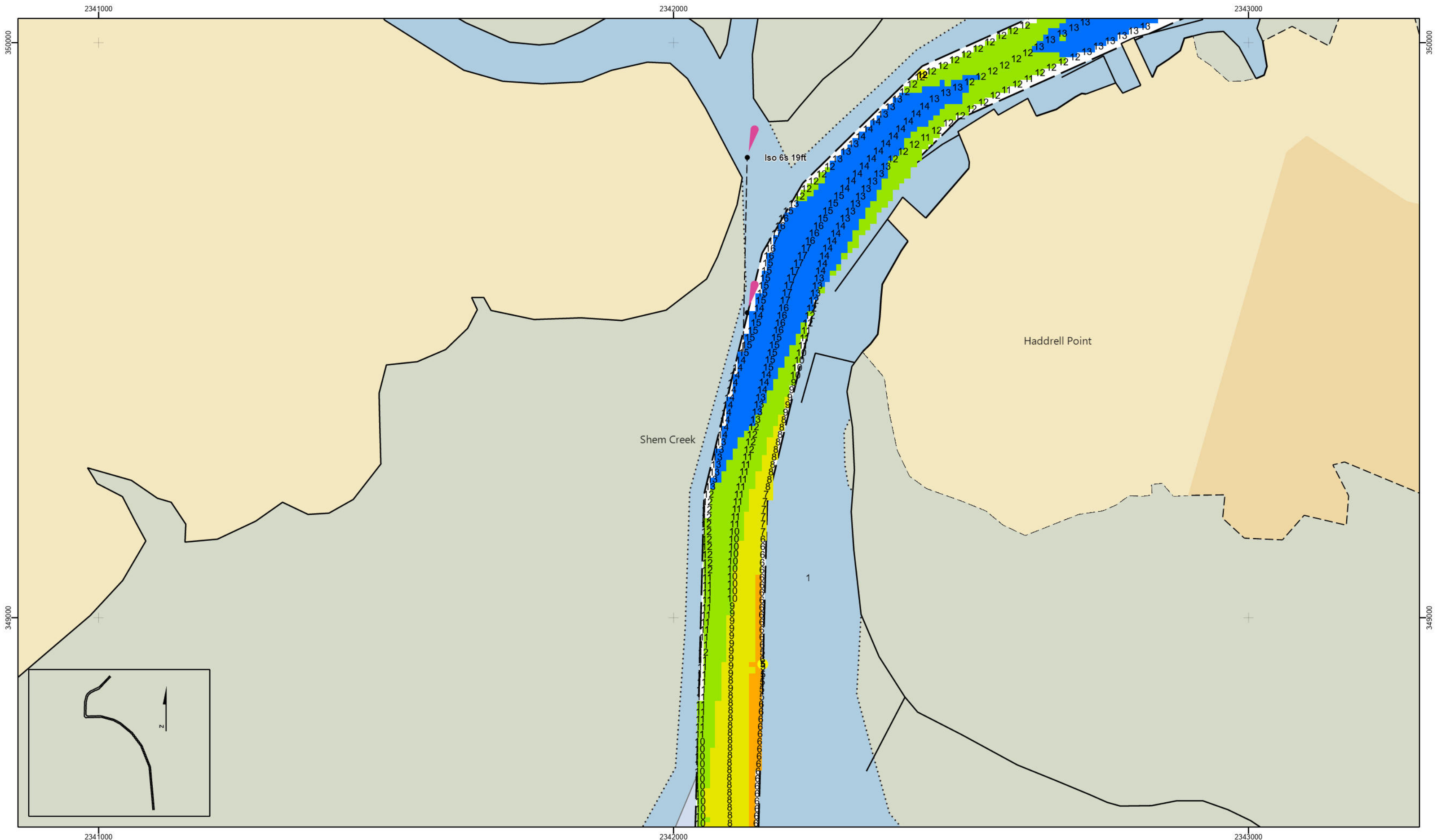


Production Notes:

- The information depicted on this product is for plotting purposes only
- Vector hydrographic data derived from surveys conducted by the USACE and approved partners
- Soundings are in feet and refer to Mean Lower Low Water (MLLW)
- Raster Backgrounds: Panhandle/Westview2 Imagery dated 2014

In no event shall the U.S. Army Corps of Engineers, Charleston District Office, Spatial Data Branch be liable for direct, indirect, incidental, consequential or special damages of any kind, including, but not limited to, loss of anticipated profits or benefits arising out of use of or reliance on the data.
 These data sets have been developed from the best available sources. Although efforts have been made to ensure that the datasets are accurate and reliable, errors and variable conditions originating from physical sources used to develop the data may be reflected in the data supplied.
 This product is not intended to be used for navigation.
 Mariners are encouraged to use all prudent safety measures.





Shem Creek
 The information depicted on this map represents the results of surveys made on the dates indicated and can only be considered as indicating the general conditions existing at that time.
 Concluded on: **17 SEP 2024**
 Mount Pleasant, South Carolina

U.S. ARMY ENGINEER DISTRICT CORPS OF ENGINEERS CHARLESTON, SOUTH CAROLINA		Reviewed By: CCW	Absolute Scale: 1:1,800	Survey Date: 17 SEP 2024	Production Date: 19 SEP 2024
SPATIAL DATA BRANCH 66A HAGOOD AVE CHARLESTON, SC 29403		Project Reference Number: CESAC-PRA-0002	Reference Scale: 1 inch = 150 feet	Survey Type: CONDITION	
CESAC-GIS@USACE.ARMY.MIL		Projection: NAD 1983 NSRS2007 StatePlane South Carolina FIPS 3900 Ft Intl			

Shoalest Sounding

Sounding
 Sounding may cover several point areas and is calculated per reach quarter area
 "*" indicates sounding above MLLW

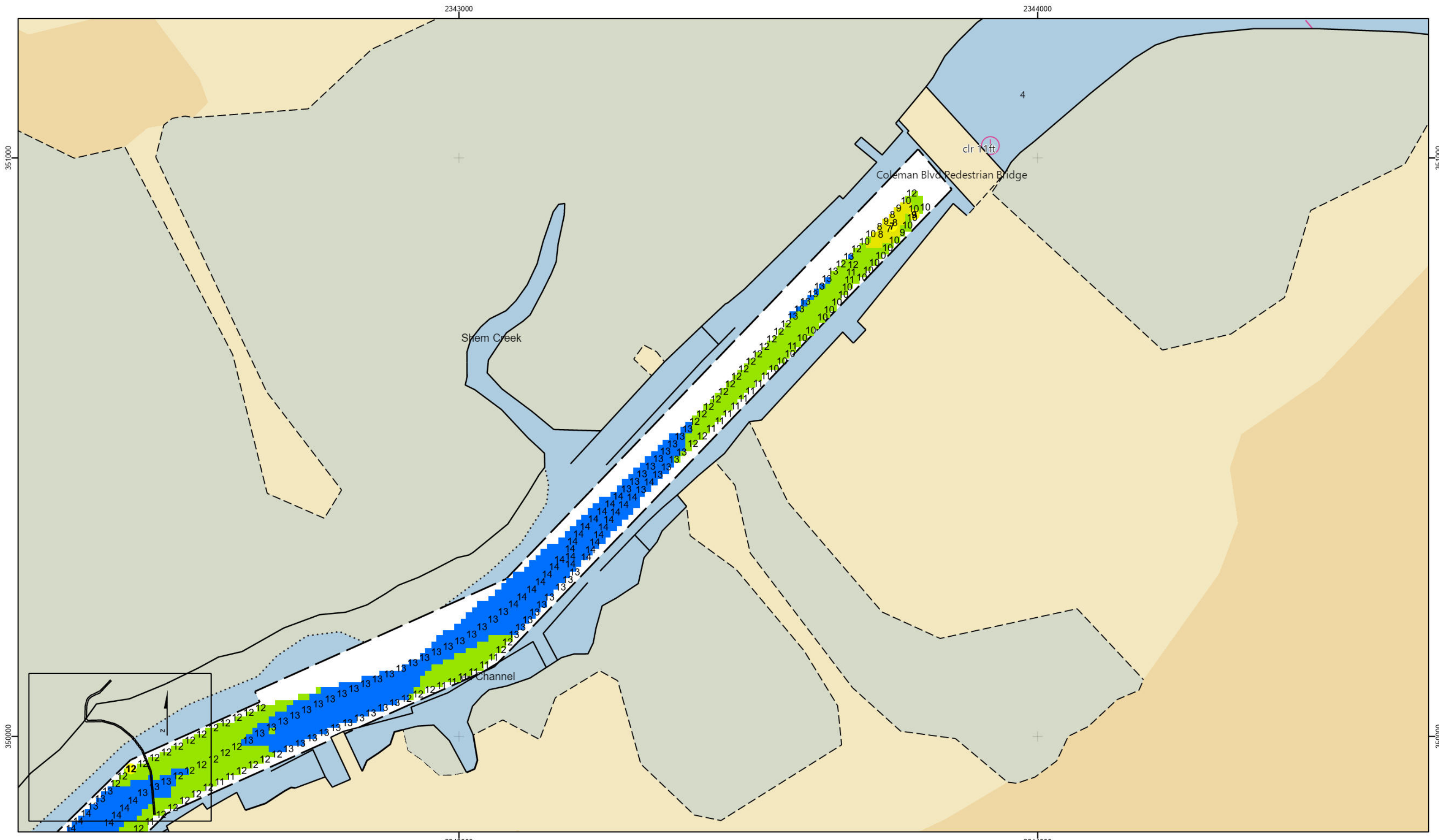


Production Notes:

- The information depicted on this product is for plotting purposes only
- Vector hydrographic data derived from surveys conducted by the USACE and approved partners
- Soundings are in feet and refer to Mean Lower Low Water (MLLW)
- Raster Backgrounds: Panoramapoint Worldview2 Imagery dated 2014

In no event shall the U.S. Army Corps of Engineers, Charleston District Office, Spatial Data Branch be liable for direct, indirect, incidental, consequential or special damages of any kind, including but not limited to, loss of anticipated profits or benefits arising out of use of or reliance on the data.
 These data sets have been developed from the best available sources. Although efforts have been made to ensure that the datasets are accurate and reliable, errors and variable conditions originating from physical sources used to develop the data may be reflected in the data supplied.
 This product is not intended to be used for navigation.
 Mariners are encouraged to use all prudent safety measures.





Shem Creek
 The information depicted on this map represents the results of surveys made on the dates indicated and can only be considered as indicating the general conditions existing at that time.
 Concluded on: 17 SEP 2024
 Mount Pleasant, South Carolina

U.S. ARMY ENGINEER DISTRICT CORPS OF ENGINEERS CHARLESTON, SOUTH CAROLINA		Survey Date: 17 SEP 2024	Production Date: 19 SEP 2024
Reviewed By: CCW	Absolute Scale: 1:1,800	Project Reference Number: CESAC-PRA-0002	
SPATIAL DATA BRANCH 69A HAGOOD AVE CHARLESTON, SC 29403		Survey Type: CONDITION	
Projection: NAD 1983 NSRS2007 StatePlane South Carolina FIPS 3900 Ft Intl			

Shoalest Sounding

Sounding
 Sounding may cover several point areas and is calculated per reach quarter area
 "*" indicates sounding above MLLW



Production Notes:

- The information depicted on this product is for plotting purposes only
- Vector hydrographic data derived from surveys conducted by the USACE and approved partners
- Soundings are in feet and refer to Mean Lower Low Water (MLLW)
- Raster Backgrounds: Panhandle/Westview2 Imagery dated 2014

In no event shall the U.S. Army Corps of Engineers, Charleston District Office, Spatial Data Branch be liable for direct, indirect, incidental, consequential or special damages of any kind, including, but not limited to, loss of anticipated profits or benefits arising out of use of or reliance on the data.

These data sets have been developed from the best available sources. Although efforts have been made to ensure that the datasets are accurate and reliable, errors and variable conditions originating from physical sources used to develop the data may be reflected in the data supplied.

This product is not intended to be used for navigation.
 Mariners are encouraged to use all prudent safety measures.

3510000
3500000

2343000 2344000
3510000 3500000

SHEET REFERENCE NUMBER
C002
Page 9 of 9