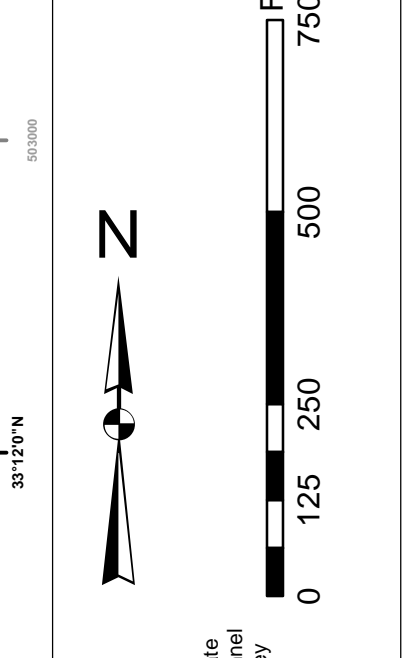
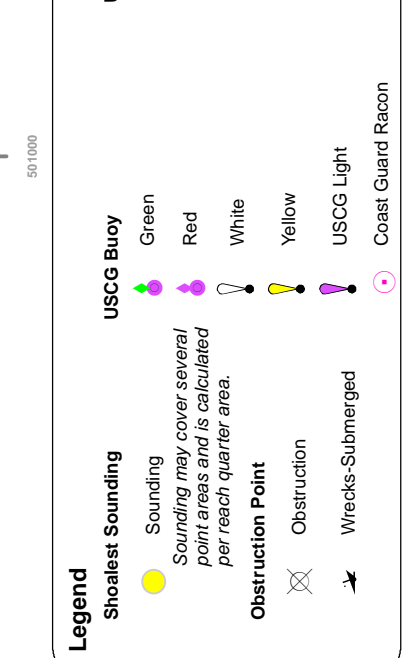
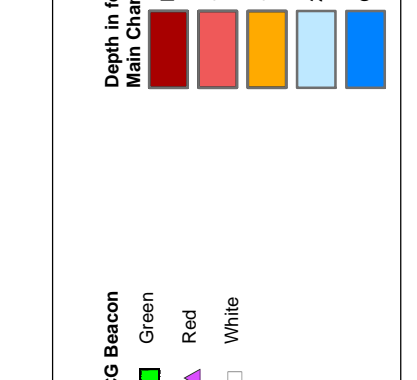


In the event that the U.S. Army Corps of Engineers, Charleston District Office, Special Data Branch is unable to locate, update, or correct the data on this map, the user is advised that the data is not guaranteed to be accurate. The user is encouraged to use all prudent safety measures.

**Position Note:**  
1. This map is produced primarily from the following sources:  
2. Bathymetry from the U.S. Coast and Geodetic Survey  
3. Soundings from the U.S. Coast and Geodetic Survey  
4. Other data as indicated on the map



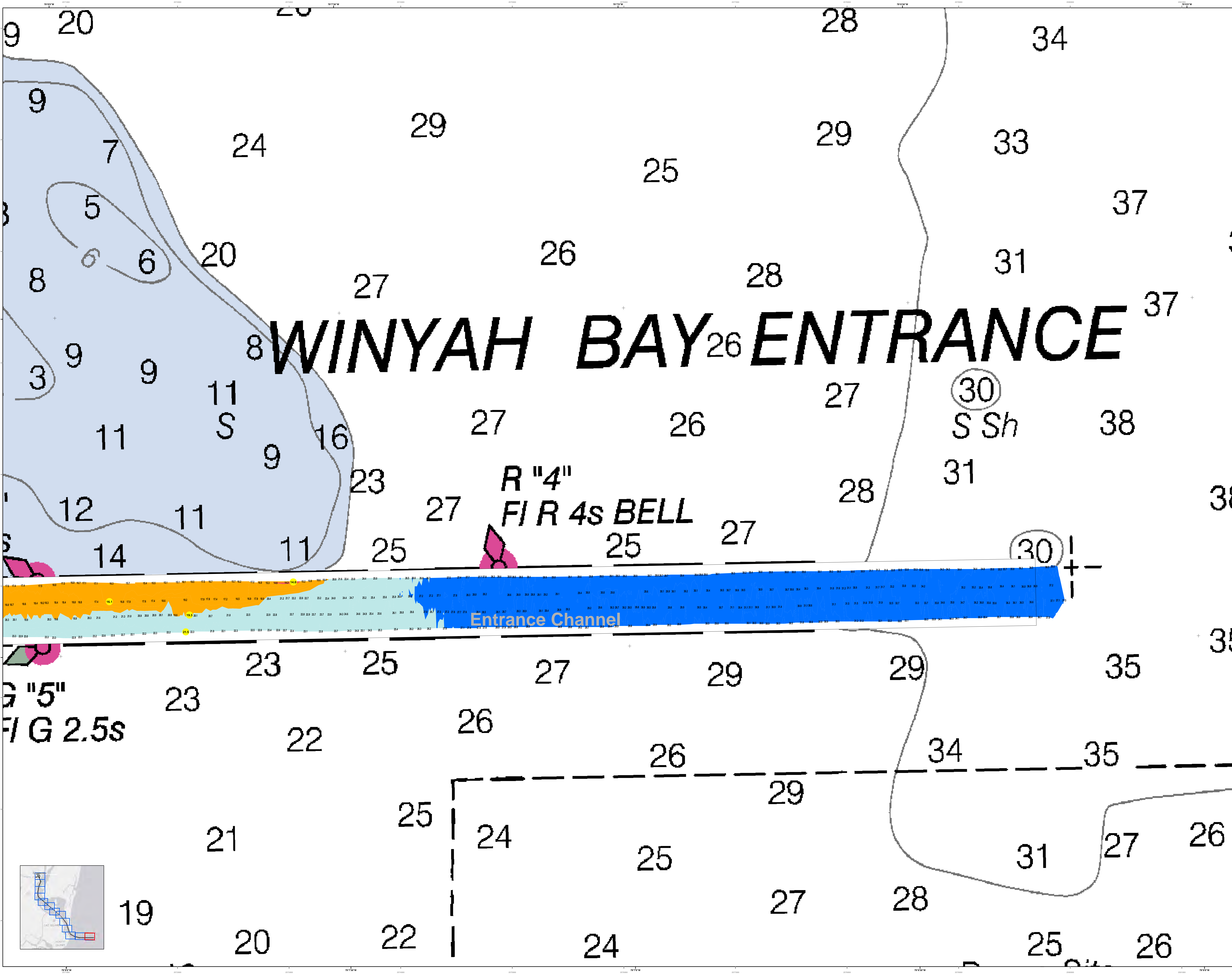
**Hydro Channel Note:**  
1. This map is produced primarily from the following sources:  
2. Bathymetry from the U.S. Coast and Geodetic Survey  
3. Soundings from the U.S. Coast and Geodetic Survey  
4. Other data as indicated on the map



Designed By:	Hydro Software v3.02	Production Date:	1 MAR 2019
Reviewed By:	1:50,000	Project Reference Number:	PC0001D
Revised Date:	1 inch = 250 feet	Survey Cycle:	CONDITION
Projection:	NAD 1983 StatePlane South Carolina FIPS 3200 Feet		

U.S. Army Corps of Engineers Charleston District Office Special Data Branch Charleston, SC 29405	CESAC-GIS/USACE/ARMY/AVIL
---	---------------------------

**Georgetown Harbor Channel Survey**  
The information depicted on this map represents the results of surveys made on the dates indicated and can only be considered as indicating the general character of the bottom. It is not intended to be used for navigation.  
Concluded on: 28 FEB 2019  
Georgetown, South Carolina



# WINYAH BAY ENTRANCE

R "4"  
FIR 4s BELL

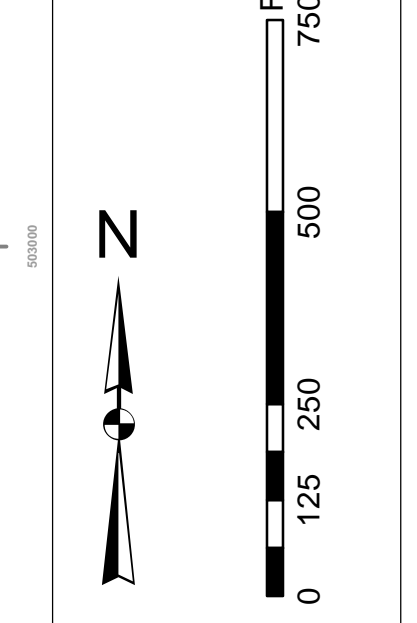
Entrance Channel

G "5"  
FIR 2.5s

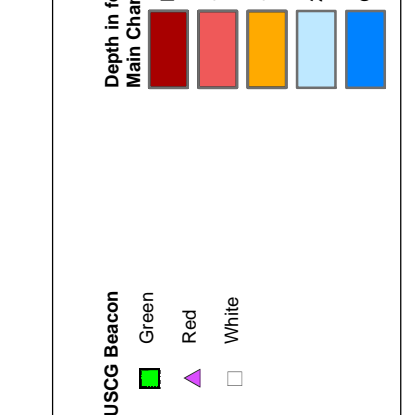


In the event that the U.S. Army Corps of Engineers, Charleston District Office, Special Data Branch is unable to provide, update, or correct data on this map, the user is advised that the data is not guaranteed to be accurate. The user is advised that the data is not guaranteed to be accurate. The user is advised that the data is not guaranteed to be accurate.

**Production Notes:**  
1. This is a preliminary map.  
2. The data is not guaranteed to be accurate.  
3. The data is not guaranteed to be accurate.



**Hydro Channel Note:**  
1. This is a preliminary map.  
2. The data is not guaranteed to be accurate.



**Legend:**  
Soundings: 1. Depth soundings in feet.  
2. Depth soundings in meters.  
3. Depth soundings in fathoms.

**Legend:**  
Obstructions: 1. Obstructions to navigation.  
2. Obstructions to navigation.

**Legend:**  
Range B: 1. Range B.

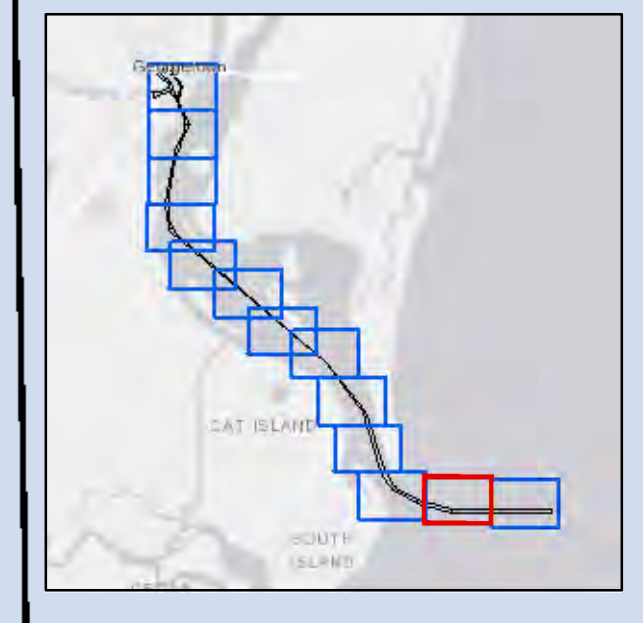
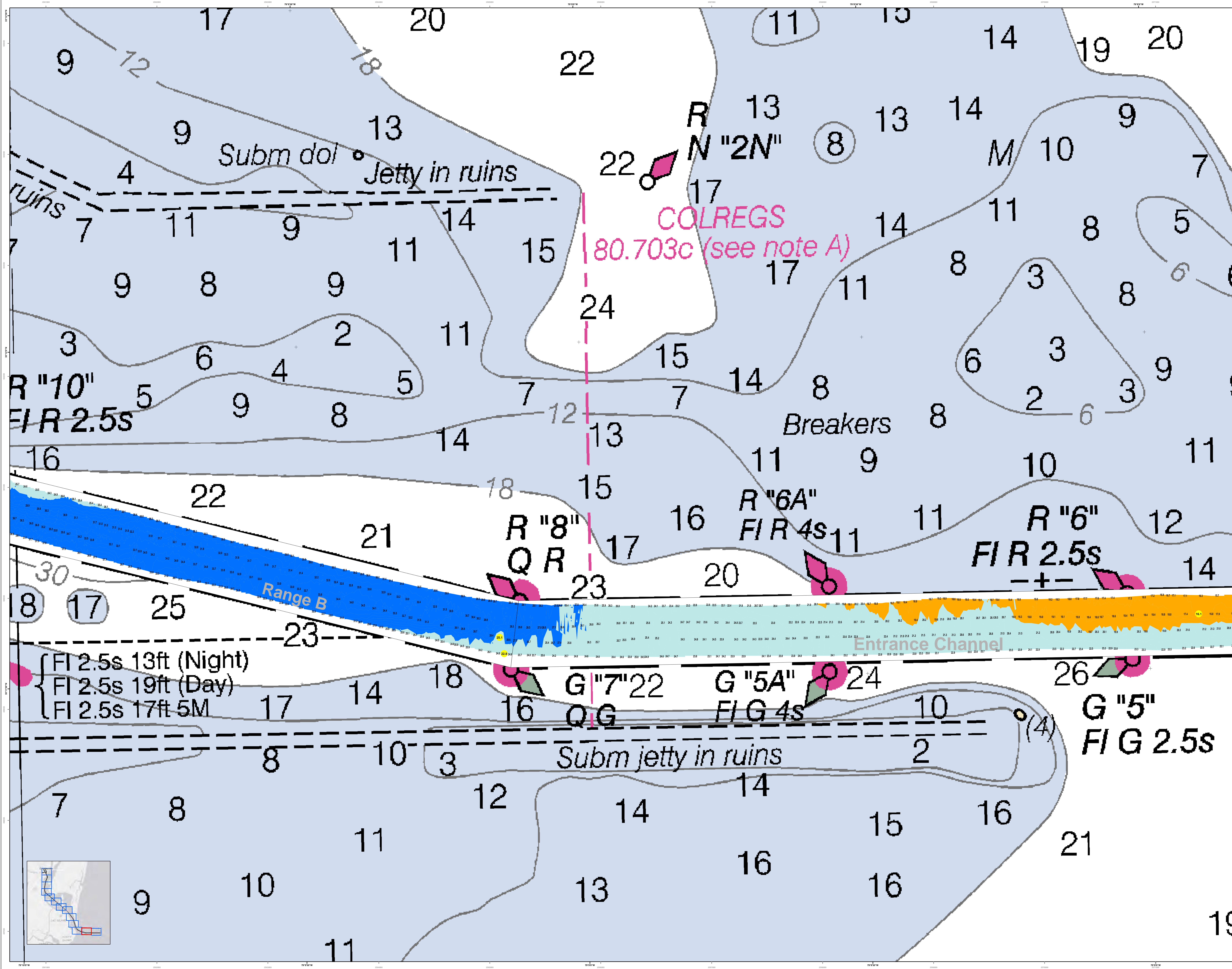
**Legend:**  
Entrance Channel: 1. Entrance Channel.

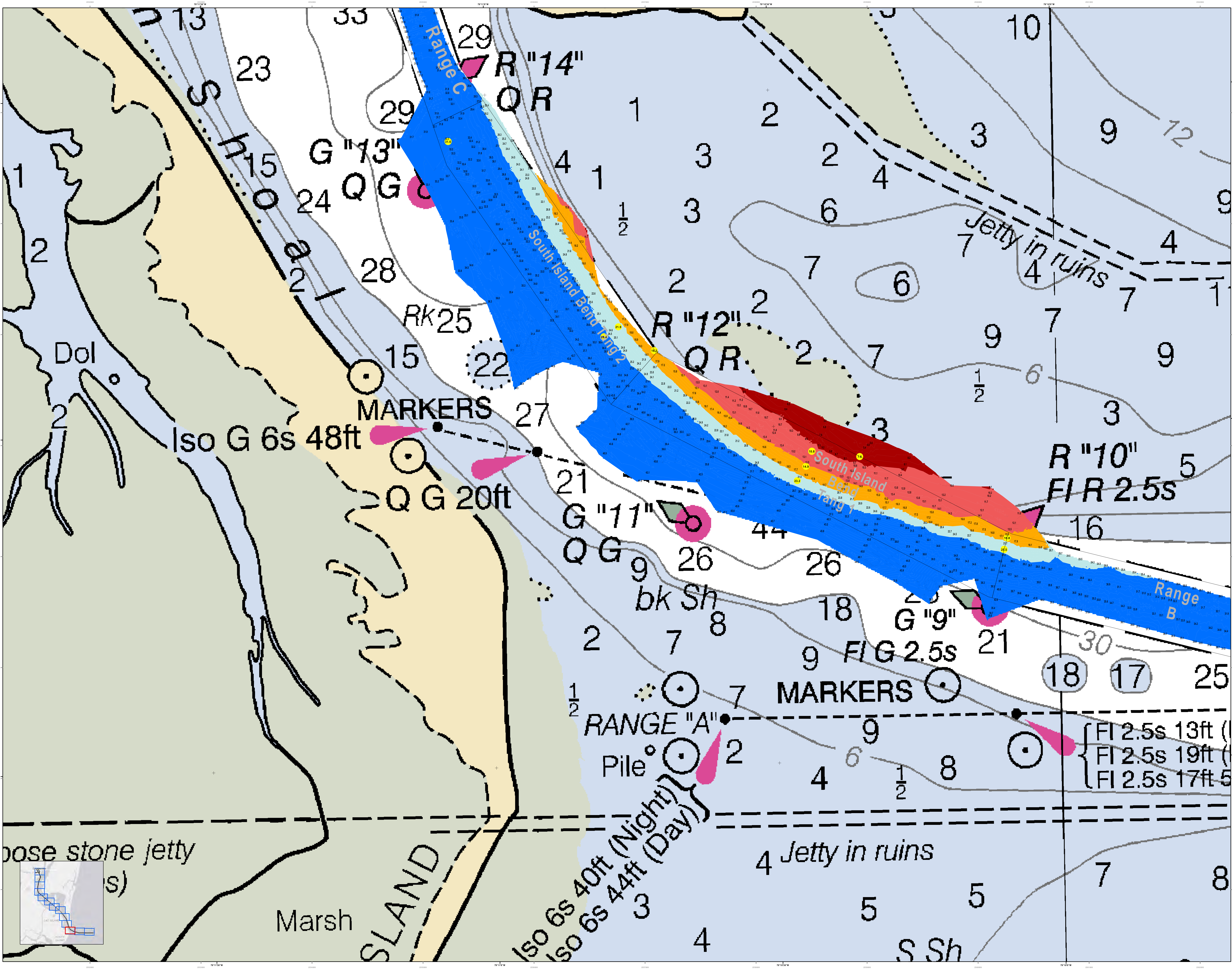
**Legend:**  
Subm jetty in ruins: 1. Subm jetty in ruins.

**Legend:**  
Range B: 1. Range B.

**Legend:**  
Entrance Channel: 1. Entrance Channel.

**Legend:**  
Subm jetty in ruins: 1. Subm jetty in ruins.





In the event of a U.S. Army Corps of Engineers, Charleston District Office, South Carolina, the information depicted on this map represents the results of surveys made on the dates indicated and can only be considered as indicating the general character of the data. It is not intended to be used for navigation. Mariners are encouraged to use all prudent safety measures.

**Vertical Datum:**  
1. Mean Sea Level (MSL)  
2. Mean High Water (MHW)  
3. Mean Low Water (MLW)  
4. Mean Lower Low Water (MLLW)  
5. Mean Lower High Water (MLHW)

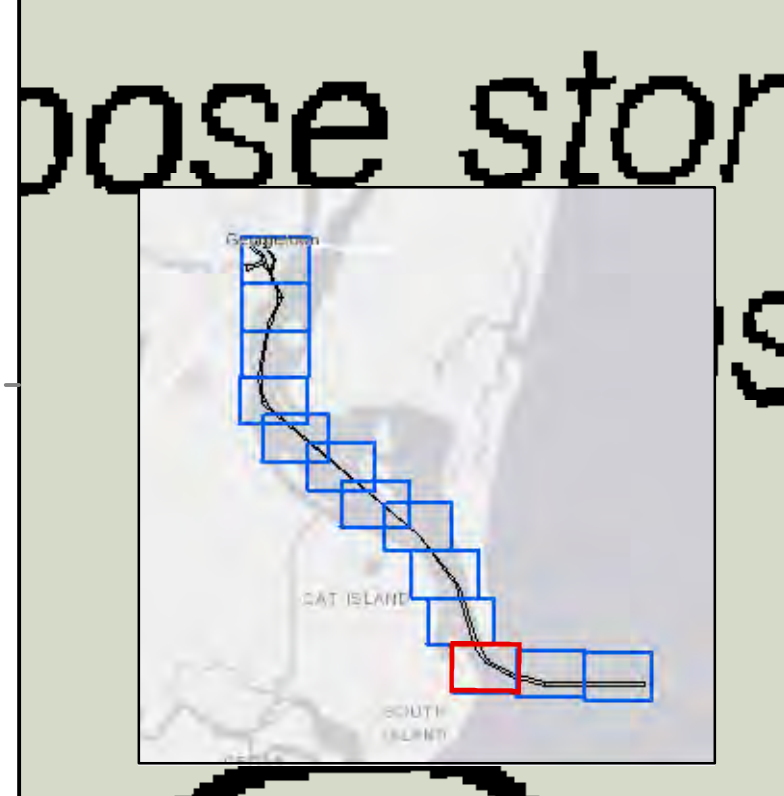
**Scale:**  
1:50,000  
1 inch = 250 feet

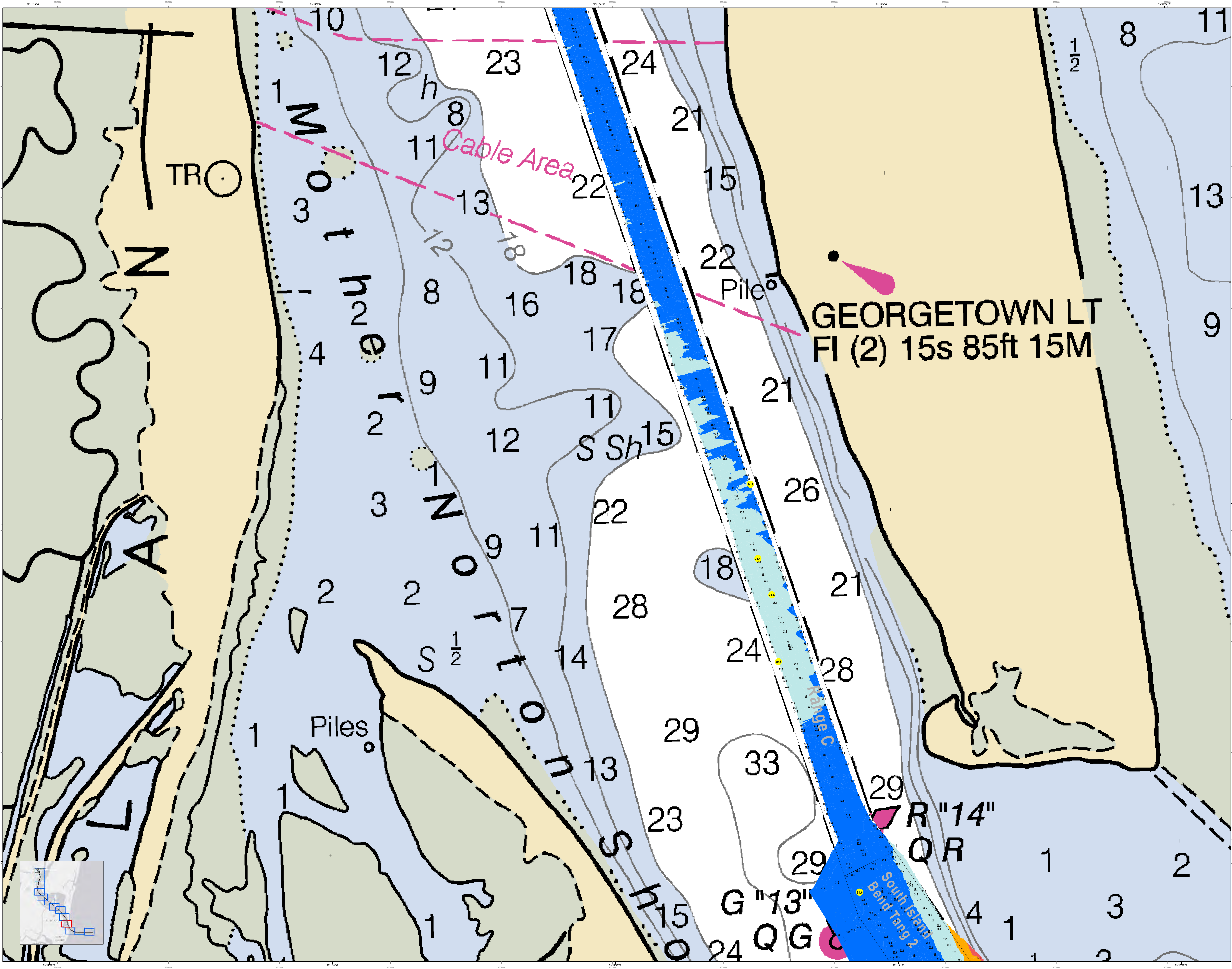
**Legend:**  
 - Blue: Depth contours  
 - Red: Obstructions  
 - Yellow: Rocks  
 - Green: Shoals  
 - Pink: Sand  
 - White: Mud  
 - Dotted: Gravel  
 - Dashed: Shell  
 - Solid: Sandstone  
 - Dotted: Coral  
 - Dashed: Seagrass  
 - Solid: Other

**Production Data:**  
 Survey Date: 28 FEB 2019  
 Project Reference Number: 13000  
 Revision: 1  
 Scale: 1 inch = 250 feet  
 Projection: NAD 1983 StatePlane South Carolina FIPS 3900 Feet

**Georgetown Harbor Channel Survey**  
 The information depicted on this map represents the results of surveys made on the dates indicated and can only be considered as indicating the general character of the data. It is not intended to be used for navigation. Mariners are encouraged to use all prudent safety measures.  
 Concluded on: 28 FEB 2019  
 Georgetown, South Carolina

**SHEET REFERENCE NUMBER:**  
C001  
SHEET 3 OF 13





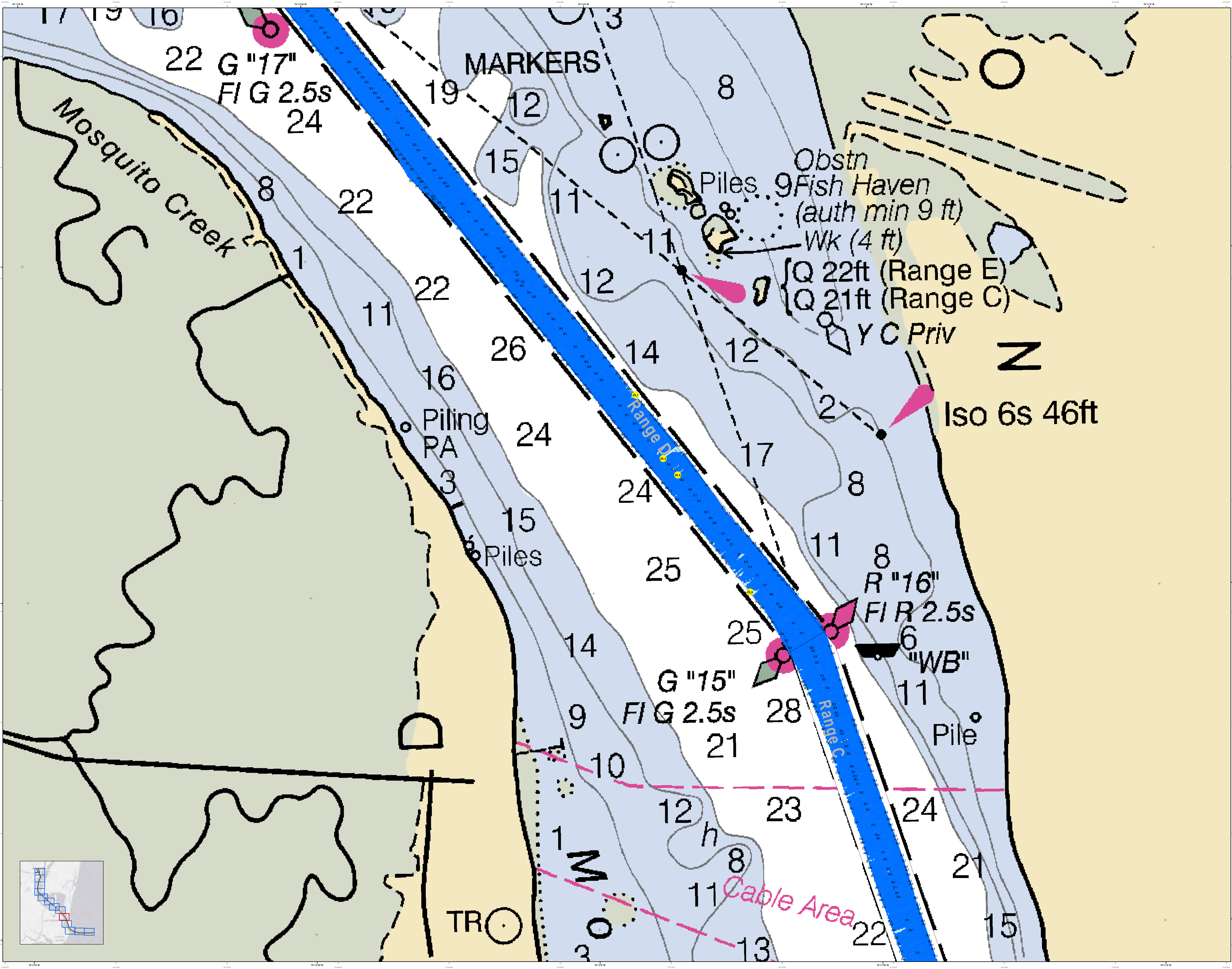
In its capacity as the U.S. Army Corps of Engineers, Charleston District Office, Special Data Branch is pleased to provide, to the public, the information contained on this map. The information is provided for informational purposes only and is not intended to be used for navigation. The information is provided as a service to the public and is not intended to be used for navigation. The information is provided as a service to the public and is not intended to be used for navigation.

**Vertical Datum:**  
1. Mean High Water  
2. Mean Low Water  
3. Mean Lower Low Water  
4. Mean Higher High Water  
5. Mean Lower High Water  
6. Mean Higher Low Water  
7. Mean Sea Level  
8. Mean Tide Level  
9. Mean Low Water Neap  
10. Mean Low Water Spring  
11. Mean High Water Neap  
12. Mean High Water Spring  
13. Mean Sea Level  
14. Mean Tide Level  
15. Mean Low Water Neap  
16. Mean Low Water Spring  
17. Mean High Water Neap  
18. Mean High Water Spring  
19. Mean Sea Level  
20. Mean Tide Level  
21. Mean Low Water Neap  
22. Mean Low Water Spring  
23. Mean High Water Neap  
24. Mean High Water Spring  
25. Mean Sea Level  
26. Mean Tide Level  
27. Mean Low Water Neap  
28. Mean Low Water Spring  
29. Mean High Water Neap  
30. Mean High Water Spring  
31. Mean Sea Level  
32. Mean Tide Level  
33. Mean Low Water Neap  
34. Mean Low Water Spring  
35. Mean High Water Neap  
36. Mean High Water Spring  
37. Mean Sea Level  
38. Mean Tide Level  
39. Mean Low Water Neap  
40. Mean Low Water Spring  
41. Mean High Water Neap  
42. Mean High Water Spring  
43. Mean Sea Level  
44. Mean Tide Level  
45. Mean Low Water Neap  
46. Mean Low Water Spring  
47. Mean High Water Neap  
48. Mean High Water Spring  
49. Mean Sea Level  
50. Mean Tide Level

**Horizontal Datum:**  
1. North American Datum of 1983  
2. North American Datum of 1983  
3. North American Datum of 1983  
4. North American Datum of 1983  
5. North American Datum of 1983  
6. North American Datum of 1983  
7. North American Datum of 1983  
8. North American Datum of 1983  
9. North American Datum of 1983  
10. North American Datum of 1983  
11. North American Datum of 1983  
12. North American Datum of 1983  
13. North American Datum of 1983  
14. North American Datum of 1983  
15. North American Datum of 1983  
16. North American Datum of 1983  
17. North American Datum of 1983  
18. North American Datum of 1983  
19. North American Datum of 1983  
20. North American Datum of 1983  
21. North American Datum of 1983  
22. North American Datum of 1983  
23. North American Datum of 1983  
24. North American Datum of 1983  
25. North American Datum of 1983  
26. North American Datum of 1983  
27. North American Datum of 1983  
28. North American Datum of 1983  
29. North American Datum of 1983  
30. North American Datum of 1983  
31. North American Datum of 1983  
32. North American Datum of 1983  
33. North American Datum of 1983  
34. North American Datum of 1983  
35. North American Datum of 1983  
36. North American Datum of 1983  
37. North American Datum of 1983  
38. North American Datum of 1983  
39. North American Datum of 1983  
40. North American Datum of 1983  
41. North American Datum of 1983  
42. North American Datum of 1983  
43. North American Datum of 1983  
44. North American Datum of 1983  
45. North American Datum of 1983  
46. North American Datum of 1983  
47. North American Datum of 1983  
48. North American Datum of 1983  
49. North American Datum of 1983  
50. North American Datum of 1983

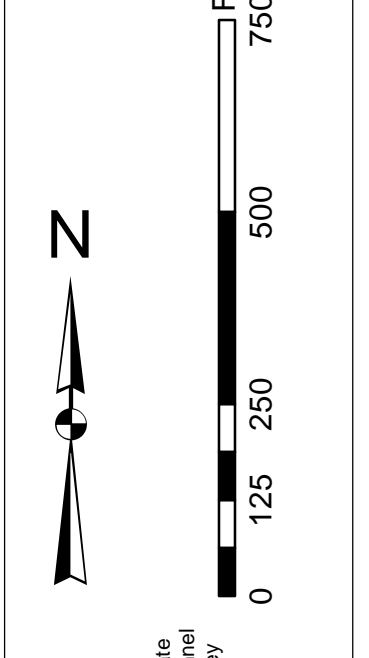
**Scale:**  
1 inch = 250 feet

**Legend:**  
1. Cable Area  
2. Piles  
3. Kings C  
4. South Island Bend Tang 2  
5. R "14" QR  
6. G "13" QG  
7. Pile  
8. North TRO  
9. North  
10. Cable Area  
11. Piles  
12. Kings C  
13. South Island Bend Tang 2  
14. R "14" QR  
15. G "13" QG  
16. Pile  
17. North TRO  
18. North  
19. Cable Area  
20. Piles  
21. Kings C  
22. South Island Bend Tang 2  
23. R "14" QR  
24. G "13" QG  
25. Pile  
26. North TRO  
27. North  
28. Cable Area  
29. Piles  
30. Kings C  
31. South Island Bend Tang 2  
32. R "14" QR  
33. G "13" QG  
34. Pile  
35. North TRO  
36. North  
37. Cable Area  
38. Piles  
39. Kings C  
40. South Island Bend Tang 2  
41. R "14" QR  
42. G "13" QG  
43. Pile  
44. North TRO  
45. North  
46. Cable Area  
47. Piles  
48. Kings C  
49. South Island Bend Tang 2  
50. R "14" QR  
51. G "13" QG  
52. Pile  
53. North TRO  
54. North  
55. Cable Area  
56. Piles  
57. Kings C  
58. South Island Bend Tang 2  
59. R "14" QR  
60. G "13" QG  
61. Pile  
62. North TRO  
63. North  
64. Cable Area  
65. Piles  
66. Kings C  
67. South Island Bend Tang 2  
68. R "14" QR  
69. G "13" QG  
70. Pile  
71. North TRO  
72. North  
73. Cable Area  
74. Piles  
75. Kings C  
76. South Island Bend Tang 2  
77. R "14" QR  
78. G "13" QG  
79. Pile  
80. North TRO  
81. North  
82. Cable Area  
83. Piles  
84. Kings C  
85. South Island Bend Tang 2  
86. R "14" QR  
87. G "13" QG  
88. Pile  
89. North TRO  
90. North  
91. Cable Area  
92. Piles  
93. Kings C  
94. South Island Bend Tang 2  
95. R "14" QR  
96. G "13" QG  
97. Pile  
98. North TRO  
99. North  
100. Cable Area  
101. Piles  
102. Kings C  
103. South Island Bend Tang 2  
104. R "14" QR  
105. G "13" QG  
106. Pile  
107. North TRO  
108. North  
109. Cable Area  
110. Piles  
111. Kings C  
112. South Island Bend Tang 2  
113. R "14" QR  
114. G "13" QG  
115. Pile  
116. North TRO  
117. North  
118. Cable Area  
119. Piles  
120. Kings C  
121. South Island Bend Tang 2  
122. R "14" QR  
123. G "13" QG  
124. Pile  
125. North TRO  
126. North  
127. Cable Area  
128. Piles  
129. Kings C  
130. South Island Bend Tang 2  
131. R "14" QR  
132. G "13" QG  
133. Pile  
134. North TRO  
135. North  
136. Cable Area  
137. Piles  
138. Kings C  
139. South Island Bend Tang 2  
140. R "14" QR  
141. G "13" QG  
142. Pile  
143. North TRO  
144. North  
145. Cable Area  
146. Piles  
147. Kings C  
148. South Island Bend Tang 2  
149. R "14" QR  
150. G "13" QG  
151. Pile  
152. North TRO  
153. North  
154. Cable Area  
155. Piles  
156. Kings C  
157. South Island Bend Tang 2  
158. R "14" QR  
159. G "13" QG  
160. Pile  
161. North TRO  
162. North  
163. Cable Area  
164. Piles  
165. Kings C  
166. South Island Bend Tang 2  
167. R "14" QR  
168. G "13" QG  
169. Pile  
170. North TRO  
171. North  
172. Cable Area  
173. Piles  
174. Kings C  
175. South Island Bend Tang 2  
176. R "14" QR  
177. G "13" QG  
178. Pile  
179. North TRO  
180. North  
181. Cable Area  
182. Piles  
183. Kings C  
184. South Island Bend Tang 2  
185. R "14" QR  
186. G "13" QG  
187. Pile  
188. North TRO  
189. North  
190. Cable Area  
191. Piles  
192. Kings C  
193. South Island Bend Tang 2  
194. R "14" QR  
195. G "13" QG  
196. Pile  
197. North TRO  
198. North  
199. Cable Area  
200. Piles  
201. Kings C  
202. South Island Bend Tang 2  
203. R "14" QR  
204. G "13" QG  
205. Pile  
206. North TRO  
207. North  
208. Cable Area  
209. Piles  
210. Kings C  
211. South Island Bend Tang 2  
212. R "14" QR  
213. G "13" QG  
214. Pile  
215. North TRO  
216. North  
217. Cable Area  
218. Piles  
219. Kings C  
220. South Island Bend Tang 2  
221. R "14" QR  
222. G "13" QG  
223. Pile  
224. North TRO  
225. North  
226. Cable Area  
227. Piles  
228. Kings C  
229. South Island Bend Tang 2  
230. R "14" QR  
231. G "13" QG  
232. Pile  
233. North TRO  
234. North  
235. Cable Area  
236. Piles  
237. Kings C  
238. South Island Bend Tang 2  
239. R "14" QR  
240. G "13" QG  
241. Pile  
242. North TRO  
243. North  
244. Cable Area  
245. Piles  
246. Kings C  
247. South Island Bend Tang 2  
248. R "14" QR  
249. G "13" QG  
250. Pile  
251. North TRO  
252. North  
253. Cable Area  
254. Piles  
255. Kings C  
256. South Island Bend Tang 2  
257. R "14" QR  
258. G "13" QG  
259. Pile  
260. North TRO  
261. North  
262. Cable Area  
263. Piles  
264. Kings C  
265. South Island Bend Tang 2  
266. R "14" QR  
267. G "13" QG  
268. Pile  
269. North TRO  
270. North  
271. Cable Area  
272. Piles  
273. Kings C  
274. South Island Bend Tang 2  
275. R "14" QR  
276. G "13" QG  
277. Pile  
278. North TRO  
279. North  
280. Cable Area  
281. Piles  
282. Kings C  
283. South Island Bend Tang 2  
284. R "14" QR  
285. G "13" QG  
286. Pile  
287. North TRO  
288. North  
289. Cable Area  
290. Piles  
291. Kings C  
292. South Island Bend Tang 2  
293. R "14" QR  
294. G "13" QG  
295. Pile  
296. North TRO  
297. North  
298. Cable Area  
299. Piles  
300. Kings C  
301. South Island Bend Tang 2  
302. R "14" QR  
303. G "13" QG  
304. Pile  
305. North TRO  
306. North  
307. Cable Area  
308. Piles  
309. Kings C  
310. South Island Bend Tang 2  
311. R "14" QR  
312. G "13" QG  
313. Pile  
314. North TRO  
315. North  
316. Cable Area  
317. Piles  
318. Kings C  
319. South Island Bend Tang 2  
320. R "14" QR  
321. G "13" QG  
322. Pile  
323. North TRO  
324. North  
325. Cable Area  
326. Piles  
327. Kings C  
328. South Island Bend Tang 2  
329. R "14" QR  
330. G "13" QG  
331. Pile  
332. North TRO  
333. North  
334. Cable Area  
335. Piles  
336. Kings C  
337. South Island Bend Tang 2  
338. R "14" QR  
339. G "13" QG  
340. Pile  
341. North TRO  
342. North  
343. Cable Area  
344. Piles  
345. Kings C  
346. South Island Bend Tang 2  
347. R "14" QR  
348. G "13" QG  
349. Pile  
350. North TRO  
351. North  
352. Cable Area  
353. Piles  
354. Kings C  
355. South Island Bend Tang 2  
356. R "14" QR  
357. G "13" QG  
358. Pile  
359. North TRO  
360. North  
361. Cable Area  
362. Piles  
363. Kings C  
364. South Island Bend Tang 2  
365. R "14" QR  
366. G "13" QG  
367. Pile  
368. North TRO  
369. North  
370. Cable Area  
371. Piles  
372. Kings C  
373. South Island Bend Tang 2  
374. R "14" QR  
375. G "13" QG  
376. Pile  
377. North TRO  
378. North  
379. Cable Area  
380. Piles  
381. Kings C  
382. South Island Bend Tang 2  
383. R "14" QR  
384. G "13" QG  
385. Pile  
386. North TRO  
387. North  
388. Cable Area  
389. Piles  
390. Kings C  
391. South Island Bend Tang 2  
392. R "14" QR  
393. G "13" QG  
394. Pile  
395. North TRO  
396. North  
397. Cable Area  
398. Piles  
399. Kings C  
400. South Island Bend Tang 2  
401. R "14" QR  
402. G "13" QG  
403. Pile  
404. North TRO  
405. North  
406. Cable Area  
407. Piles  
408. Kings C  
409. South Island Bend Tang 2  
410. R "14" QR  
411. G "13" QG  
412. Pile  
413. North TRO  
414. North  
415. Cable Area  
416. Piles  
417. Kings C  
418. South Island Bend Tang 2  
419. R "14" QR  
420. G "13" QG  
421. Pile  
422. North TRO  
423. North  
424. Cable Area  
425. Piles  
426. Kings C  
427. South Island Bend Tang 2  
428. R "14" QR  
429. G "13" QG  
430. Pile  
431. North TRO  
432. North  
433. Cable Area  
434. Piles  
435. Kings C  
436. South Island Bend Tang 2  
437. R "14" QR  
438. G "13" QG  
439. Pile  
440. North TRO  
441. North  
442. Cable Area  
443. Piles  
444. Kings C  
445. South Island Bend Tang 2  
446. R "14" QR  
447. G "13" QG  
448. Pile  
449. North TRO  
450. North  
451. Cable Area  
452. Piles  
453. Kings C  
454. South Island Bend Tang 2  
455. R "14" QR  
456. G "13" QG  
457. Pile  
458. North TRO  
459. North  
460. Cable Area  
461. Piles  
462. Kings C  
463. South Island Bend Tang 2  
464. R "14" QR  
465. G "13" QG  
466. Pile  
467. North TRO  
468. North  
469. Cable Area  
470. Piles  
471. Kings C  
472. South Island Bend Tang 2  
473. R "14" QR  
474. G "13" QG  
475. Pile  
476. North TRO  
477. North  
478. Cable Area  
479. Piles  
480. Kings C  
481. South Island Bend Tang 2  
482. R "14" QR  
483. G "13" QG  
484. Pile  
485. North TRO  
486. North  
487. Cable Area  
488. Piles  
489. Kings C  
490. South Island Bend Tang 2  
491. R "14" QR  
492. G "13" QG  
493. Pile  
494. North TRO  
495. North  
496. Cable Area  
497. Piles  
498. Kings C  
499. South Island Bend Tang 2  
500. R "14" QR  
501. G "13" QG  
502. Pile  
503. North TRO  
504. North  
505. Cable Area  
506. Piles  
507. Kings C  
508. South Island Bend Tang 2  
509. R "14" QR  
510. G "13" QG  
511. Pile  
512. North TRO  
513. North  
514. Cable Area  
515. Piles  
516. Kings C  
517. South Island Bend Tang 2  
518. R "14" QR  
519. G "13" QG  
520. Pile  
521. North TRO  
522. North  
523. Cable Area  
524. Piles  
525. Kings C  
526. South Island Bend Tang 2  
527. R "14" QR  
528. G "13" QG  
529. Pile  
530. North TRO  
531. North  
532. Cable Area  
533. Piles  
534. Kings C  
535. South Island Bend Tang 2  
536. R "14" QR  
537. G "13" QG  
538. Pile  
539. North TRO  
540. North  
541. Cable Area  
542. Piles  
543. Kings C  
544. South Island Bend Tang 2  
545. R "14" QR  
546. G "13" QG  
547. Pile  
548. North TRO  
549. North  
550. Cable Area  
551. Piles  
552. Kings C  
553. South Island Bend Tang 2  
554. R "14" QR  
555. G "13" QG  
556. Pile  
557. North TRO  
558. North  
559. Cable Area  
560. Piles  
561. Kings C  
562. South Island Bend Tang 2  
563. R "14" QR  
564. G "13" QG  
565. Pile  
566. North TRO  
567. North  
568. Cable Area  
569. Piles  
570. Kings C  
571. South Island Bend Tang 2  
572. R "14" QR  
573. G "13" QG  
574. Pile  
575. North TRO  
576. North  
577. Cable Area  
578. Piles  
579. Kings C  
580. South Island Bend Tang 2  
581. R "14" QR  
582. G "13" QG  
583. Pile  
584. North TRO  
585. North  
586. Cable Area  
587. Piles  
588. Kings C  
589. South Island Bend Tang 2  
590. R "14" QR  
591. G "13" QG  
592. Pile  
593. North TRO  
594. North  
595. Cable Area  
596. Piles  
597. Kings C  
598. South Island Bend Tang 2  
599. R "14" QR  
600. G "13" QG  
601. Pile  
602. North TRO  
603. North  
604. Cable Area  
605. Piles  
606. Kings C  
607. South Island Bend Tang 2  
608. R "14" QR  
609. G "13" QG  
610. Pile  
611. North TRO  
612. North  
613. Cable Area  
614. Piles  
615. Kings C  
616. South Island Bend Tang 2  
617. R "14" QR  
618. G "13" QG  
619. Pile  
620. North TRO  
621. North  
622. Cable Area  
623. Piles  
624. Kings C  
625. South Island Bend Tang 2  
626. R "14" QR  
627. G "13" QG  
628. Pile  
629. North TRO  
630. North  
631. Cable Area  
632. Piles  
633. Kings C  
634. South Island Bend Tang 2  
635. R "14" QR  
636. G "13" QG  
637. Pile  
638. North TRO  
639. North  
640. Cable Area  
641. Piles  
642. Kings C  
643. South Island Bend Tang 2  
644. R "14" QR  
645. G "13" QG  
646. Pile  
647. North TRO  
648. North  
649. Cable Area  
650. Piles  
651. Kings C  
652. South Island Bend Tang 2  
653. R "14" QR  
654. G "13" QG  
655. Pile  
656. North TRO  
657. North  
658. Cable Area  
659. Piles  
660. Kings C  
661. South Island Bend Tang 2  
662. R "14" QR  
663. G "13" QG  
664. Pile  
665. North TRO  
666. North  
667. Cable Area  
668. Piles  
669. Kings C  
670. South Island Bend Tang 2  
671. R "14" QR  
672. G "13" QG  
673. Pile  
674. North TRO  
675. North  
676. Cable Area  
677. Piles  
678. Kings C  
679. South Island Bend Tang 2  
680. R "14" QR  
681. G "13" QG  
682. Pile  
683. North TRO  
684. North  
685. Cable Area  
686. Piles  
687. Kings C  
688. South Island Bend Tang 2  
689. R "14" QR  
690. G "13" QG  
691. Pile  
692. North TRO  
693. North  
694. Cable Area  
695. Piles  
696. Kings C  
697. South Island Bend Tang 2  
698. R "14" QR  
699. G "13" QG  
700. Pile  
701. North TRO  
702. North  
703. Cable Area  
704. Piles  
705. Kings C  
706. South Island Bend Tang 2  
707. R "14" QR  
708. G "13" QG  
709. Pile  
710. North TRO  
711. North  
712. Cable Area  
713. Piles  
714. Kings C  
715. South Island Bend Tang 2  
716. R "14" QR  
717. G "13" QG  
718. Pile  
719. North TRO  
720. North  
721. Cable Area  
722. Piles  
723. Kings C  
724. South Island Bend Tang 2  
725. R "14" QR  
726. G "13" QG  
727. Pile  
728. North TRO  
729. North  
730. Cable Area  
731. Piles  
732. Kings C  
733. South Island Bend Tang 2  
734. R "14" QR  
735. G "13" QG  
736. Pile  
737. North TRO  
738. North  
739. Cable Area  
740. Piles  
741. Kings C  
742. South Island Bend Tang 2  
743. R "14" QR  
744. G "13" QG  
745. Pile  
746. North TRO  
747. North  
748. Cable Area  
749. Piles  
750. Kings C  
751. South Island Bend Tang 2  
752. R "14" QR  
753. G "13" QG  
754. Pile  
755. North TRO  
756. North  
757. Cable Area  
758. Piles  
759. Kings C  
760. South Island Bend Tang 2  
761. R "14" QR  
762. G "13" QG  
763. Pile  
764. North TRO  
765. North  
766. Cable Area  
767. Piles  
768. Kings C  
769. South Island Bend Tang 2  
770. R "14" QR  
771. G "13" QG  
772. Pile  
773. North TRO  
774. North  
775. Cable Area  
776. Piles  
777. Kings C  
778. South Island Bend Tang 2  
779. R "14" QR  
780. G "13" QG  
781. Pile  
782. North TRO  
783. North  
784. Cable Area  
785. Piles  
786. Kings C  
787. South Island Bend Tang 2  
788. R "14" QR  
789. G "13" QG  
790. Pile  
791. North TRO  
792. North  
793. Cable Area  
794. Piles  
795. Kings C  
796. South Island Bend Tang 2  
797. R "14" QR  
798. G "13" QG  
799. Pile  
800. North TRO  
801. North  
802. Cable Area  
803. Piles  
804. Kings C  
805. South Island Bend Tang 2  
806. R "14" QR  
807. G "13" QG  
808. Pile  
809. North TRO  
810. North  
811. Cable Area  
812. Piles  
813. Kings C  
814. South Island Bend Tang 2  
815. R "14" QR  
816. G "13" QG  
817. Pile  
818. North TRO  
819. North  
820. Cable Area  
821. Piles  
822. Kings C  
823. South Island Bend Tang 2  
824. R "14" QR  
825. G "13" QG  
826. Pile  
827. North TRO  
828. North  
829. Cable Area  
830. Piles  
831. Kings C  
832. South Island Bend Tang 2  
833. R "14" QR  
834. G "13" QG  
835. Pile  
836. North TRO  
837. North  
838. Cable Area  
839. Piles  
840. Kings C  
841. South Island Bend Tang 2  
842. R "14" QR  
843. G "13" QG  
844. Pile  
845. North TRO  
846. North  
847. Cable Area  
848. Piles  
849. Kings C  
850. South Island Bend Tang 2  
851. R "14" QR  
852. G "13" QG  
853. Pile  
854. North TRO  
855. North  
856. Cable Area  
857. Piles  
858. Kings C  
859. South Island Bend Tang 2  
860. R "14" QR  
861. G "13" QG  
862. Pile  
863. North TRO  
864. North  
865. Cable Area  
866. Piles  
867. Kings C  
868. South Island Bend Tang 2  
869. R "14" QR  
870. G "13" QG  
871. Pile  
872. North TRO  
873. North  
874. Cable Area  
875. Piles  
876. Kings C  
877. South Island Bend Tang 2  
878. R "14" QR  
879. G "13" QG  
880. Pile  
881. North TRO  
882. North  
883. Cable Area  
884. Piles  
885. Kings C  
886. South Island Bend Tang 2  
887. R "14" QR  
888. G "13" QG  
889. Pile  
890. North TRO  
891. North  
892. Cable Area  
893. Piles  
894. Kings C  
895. South Island Bend Tang 2  
896. R "14" QR  
897. G "13" QG  
898. Pile  
899. North TRO  
900. North  
901. Cable Area  
902. Piles  
903. Kings C  
904. South Island Bend Tang 2  
905. R "14" QR  
906. G "13" QG  
907. Pile  
908. North TRO  
909. North  
910. Cable Area  
911. Piles  
912. Kings C  
913. South Island Bend Tang 2  
914. R "14" QR  
915. G "13" QG  
916. Pile  
917. North TRO  
918. North  
919. Cable Area  
920. Piles  
921. Kings C  
922. South Island Bend Tang 2  
923. R "14" QR  
924. G "13" QG  
925. Pile  
926. North TRO  
927. North  
928. Cable Area  
929. Piles  
929. Kings C  
930. South Island Bend Tang 2  
931. R "14" QR  
932. G "13" QG  
933. Pile  
934. North TRO  
935. North  
936. Cable Area  
937. Piles  
937. Kings C  
938. South Island Bend Tang 2  
939. R "14" QR  
940. G "13" QG  
941. Pile  
942. North TRO  
943. North  
944. Cable Area  
945. Piles  
945. Kings C  
946. South Island Bend Tang 2  
947. R "14" QR  
948. G "13" QG  
949. Pile  
950. North TRO  
951. North  
952. Cable Area  
953. Piles  
953. Kings C  
954. South Island Bend Tang 2  
955. R "14" QR  
956. G "13" QG  
957. Pile  
958. North TRO  
959. North  
960. Cable Area  
961. Piles  
961. Kings C  
962. South Island Bend Tang 2  
963. R "14" QR  
964. G "13" QG  
965. Pile  
966. North TRO  
967. North  
968. Cable Area  
969. Piles  
969. Kings C  
970. South Island Bend Tang 2  
971. R "14" QR  
972. G "13" QG  
973. Pile  
974. North TRO  
975. North  
976. Cable Area  
977. Piles  
977. Kings C  
978. South Island Bend Tang 2  
979. R "14" QR  
980. G "13" QG  
981. Pile  
982. North TRO  
983. North  
984. Cable Area  
985. Piles  
985. Kings C  
986. South Island Bend Tang 2  
987. R "14" QR  
988. G "13" QG  
989. Pile  
990. North TRO  
991. North  
992. Cable Area  
993. Piles  
993. Kings C  
994. South Island Bend Tang 2  
995. R "14" QR  
996. G "13" QG  
997. Pile  
998. North TRO  
999. North  
1000. Cable Area  
1001. Piles  
1001. Kings C  
1002. South Island Bend Tang 2  
1003. R "14" QR  
1004. G "13" QG  
1005. Pile  
1006. North TRO  
1007. North  
1008. Cable Area  
1009. Piles  
1009. Kings C  
1010. South Island Bend Tang 2  
1011. R "14" QR  
1012. G "13" QG  
1013. Pile  
1014. North TRO  
1015. North  
1016. Cable Area  
1017. Piles  
1017. Kings C  
1018. South Island Bend Tang 2  
1019. R "14" QR  
1020. G "13" QG  
1021. Pile  
1022. North TRO  
1023. North  
1024. Cable Area  
1025. Piles  
1025. Kings C  
1026. South Island Bend Tang 2  
1027. R "14" QR  
1028. G "13" QG  
1029. Pile  
1030. North TRO  
1031. North  
1032. Cable Area  
1033. Piles  
1033. Kings C  
1034. South Island Bend Tang 2  
1035. R "14" QR  
1036. G "13" QG  
1037. Pile  
1038. North TRO  
1039. North  
1040. Cable Area  
1041. Piles  
1041. Kings C  
1042. South Island Bend Tang 2  
1043. R "14" QR  
1044. G "13" QG  
1045. Pile  
1046. North TRO  
1047. North  
1048. Cable Area  
1049. Piles  
1049. Kings C  
1050. South Island Bend Tang 2  
1051. R "14" QR  
1052. G "13" QG  
1053. Pile  
1054. North TRO  
1055. North  
1056. Cable Area  
1057. Piles  
1057. Kings C  
1058. South Island Bend Tang 2  
1059. R "14" QR  
1060. G "13" QG  
1061. Pile  
1062. North TRO  
1063. North  
1064. Cable Area  
1065. Piles  
1065. Kings C  
1066. South Island Bend Tang 2  
1067. R "14" QR  
1068. G "13" QG  
1069. Pile  
1070. North TRO  
1071. North  
1072. Cable Area  
1073. Piles  
1073. Kings C  
1074. South Island Bend Tang 2  
1075. R "14" QR  
1076. G "13" QG  
1077. Pile  
1078. North TRO  
1079. North  
1080. Cable Area  
1081. Piles  
1081. Kings C  
1082. South Island Bend Tang 2  
1083. R "14" QR  
1084. G "13" QG  
1085. Pile  
1086. North TRO  
1087. North  
1088. Cable Area  
1089. Piles  
1089. Kings C  
1090. South Island Bend Tang 2  
1091. R "14" QR  
1092. G "13" QG  
1093. Pile  
1094. North TRO  
1095. North  
1096. Cable Area  
1097. Piles  
1097. Kings C  
1098. South Island Bend Tang 2  
1099. R "14" QR  
1100. G "13" QG  
1101. Pile  
1102. North TRO  
1103. North  
1104. Cable Area  
1105. Piles  
1105. Kings C  
1106. South Island Bend Tang 2  
1107. R "14" QR  
1108. G "13" QG  
1109. P



In the event that the U.S. Army Corps of Engineers, Charleston District Office, Sound Data Branch is unable to access, update, or delete data from this chart, the user is advised that the data on this chart is not guaranteed to be accurate. This data was last updated on 28 FEB 2019. The user is encouraged to use a prudent safety margin.

**Precession Note:**  
1. This is a precession-free chart.  
2. The chart is based on the International Date Line.  
3. The chart is based on the International Date Line.  
4. The chart is based on the International Date Line.



**Symbol Legend:**  
1. Obstruction  
2. Light  
3. Buoy  
4. Beacon  
5. Daymark  
6. Nightmark  
7. Daymark  
8. Nightmark  
9. Daymark  
10. Nightmark  
11. Daymark  
12. Nightmark  
13. Daymark  
14. Nightmark  
15. Daymark  
16. Nightmark  
17. Daymark  
18. Nightmark  
19. Daymark  
20. Nightmark  
21. Daymark  
22. Nightmark  
23. Daymark  
24. Nightmark  
25. Daymark  
26. Nightmark  
27. Daymark  
28. Nightmark  
29. Daymark  
30. Nightmark  
31. Daymark  
32. Nightmark  
33. Daymark  
34. Nightmark  
35. Daymark  
36. Nightmark  
37. Daymark  
38. Nightmark  
39. Daymark  
40. Nightmark  
41. Daymark  
42. Nightmark  
43. Daymark  
44. Nightmark  
45. Daymark  
46. Nightmark  
47. Daymark  
48. Nightmark  
49. Daymark  
50. Nightmark  
51. Daymark  
52. Nightmark  
53. Daymark  
54. Nightmark  
55. Daymark  
56. Nightmark  
57. Daymark  
58. Nightmark  
59. Daymark  
60. Nightmark  
61. Daymark  
62. Nightmark  
63. Daymark  
64. Nightmark  
65. Daymark  
66. Nightmark  
67. Daymark  
68. Nightmark  
69. Daymark  
70. Nightmark  
71. Daymark  
72. Nightmark  
73. Daymark  
74. Nightmark  
75. Daymark  
76. Nightmark  
77. Daymark  
78. Nightmark  
79. Daymark  
80. Nightmark  
81. Daymark  
82. Nightmark  
83. Daymark  
84. Nightmark  
85. Daymark  
86. Nightmark  
87. Daymark  
88. Nightmark  
89. Daymark  
90. Nightmark  
91. Daymark  
92. Nightmark  
93. Daymark  
94. Nightmark  
95. Daymark  
96. Nightmark  
97. Daymark  
98. Nightmark  
99. Daymark  
100. Nightmark

**Chart Notes:**  
1. This chart is based on the International Date Line.  
2. The chart is based on the International Date Line.  
3. The chart is based on the International Date Line.

Chart No.	Scale	Projection
11000	1:50,000	NAD 1983 StatePlane South Carolina FIPS 3900 Feet

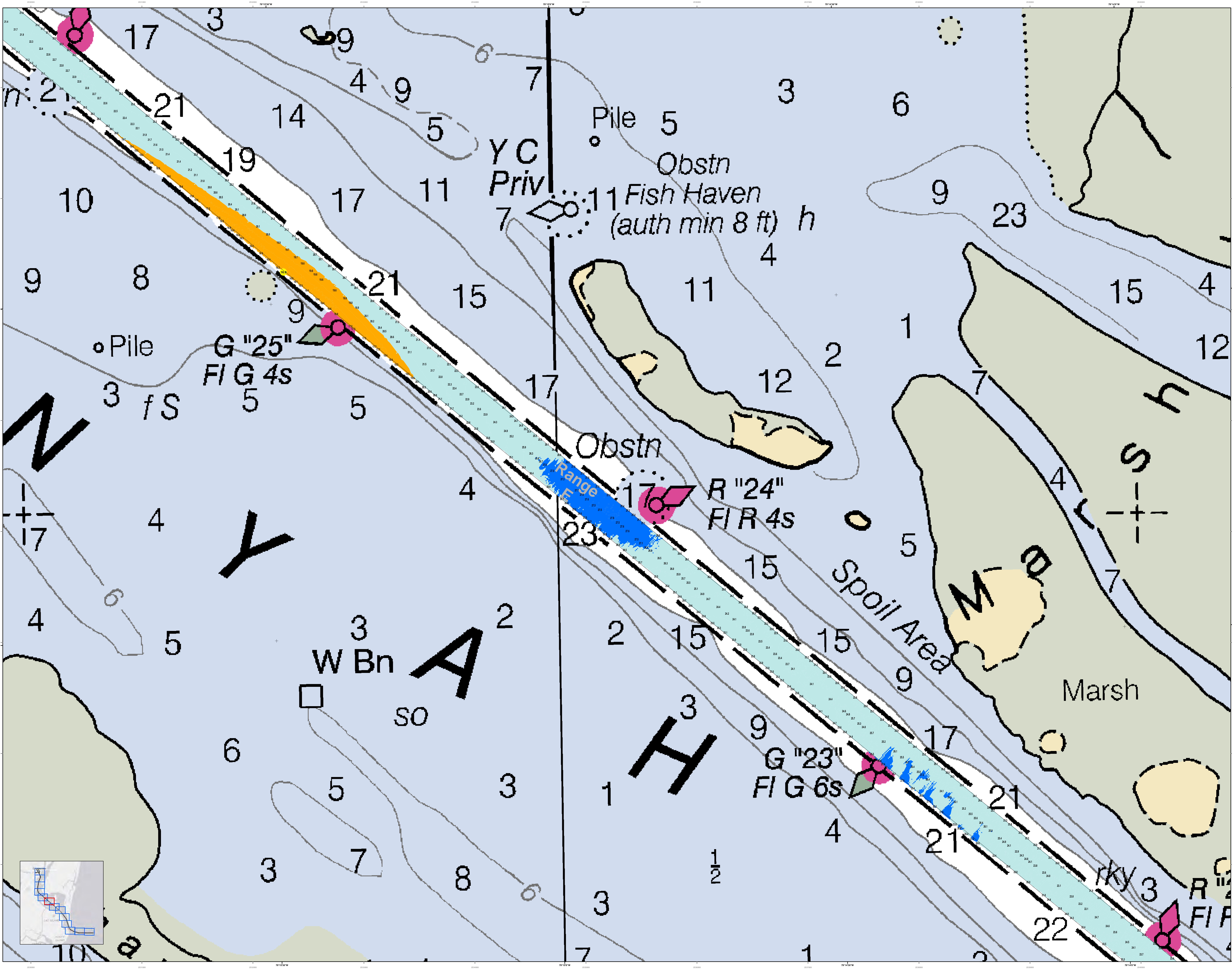
Survey Date	Production Date
28 FEB 2019	1 MAR 2019

Designed By	Reviewed By	Checked By	Approved By
Hydro Software v3.82	1:50,000	1:50,000	1:50,000

**Georgetown Harbor Channel Survey**  
The information depicted on this map represents the results of surveys made on the dates indicated and can only be considered as indicating the general character of the bottom. It is not to be used for navigation. Concluded on: 28 FEB 2019  
Georgetown, South Carolina

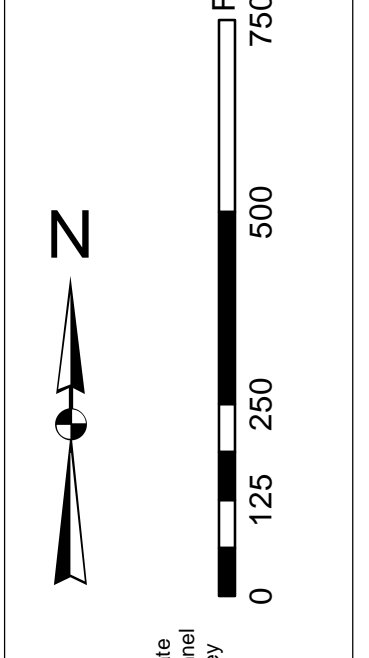




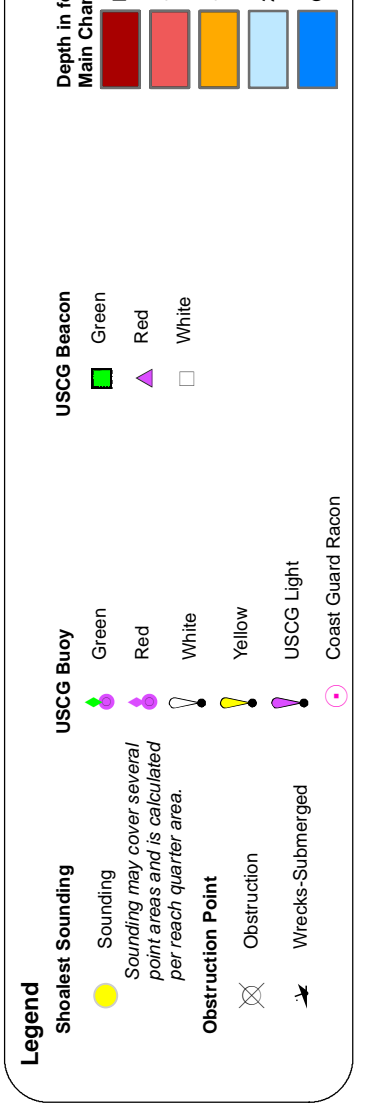


In its use of the U.S. Army Corps of Engineers, Charleston District Office, Special Data Sheets for the purpose of this chart, the user assumes all responsibility for the accuracy of the data. These data sheets have been developed from the best available information and are not intended to be used as a substitute for a hydrographic survey. The user is advised to verify the accuracy of the data and to use appropriate caution when navigating in the area. The user is encouraged to use all prudent safety measures.

**Production Notes:**  
1. This chart is produced electronically from the data sheets.  
2. The chart is produced at a scale of 1:25,000.  
3. The chart is produced at a scale of 1:25,000.  
4. The chart is produced at a scale of 1:25,000.



**System Charted Note:**  
1. This chart is produced electronically from the data sheets.  
2. The chart is produced at a scale of 1:25,000.  
3. The chart is produced at a scale of 1:25,000.



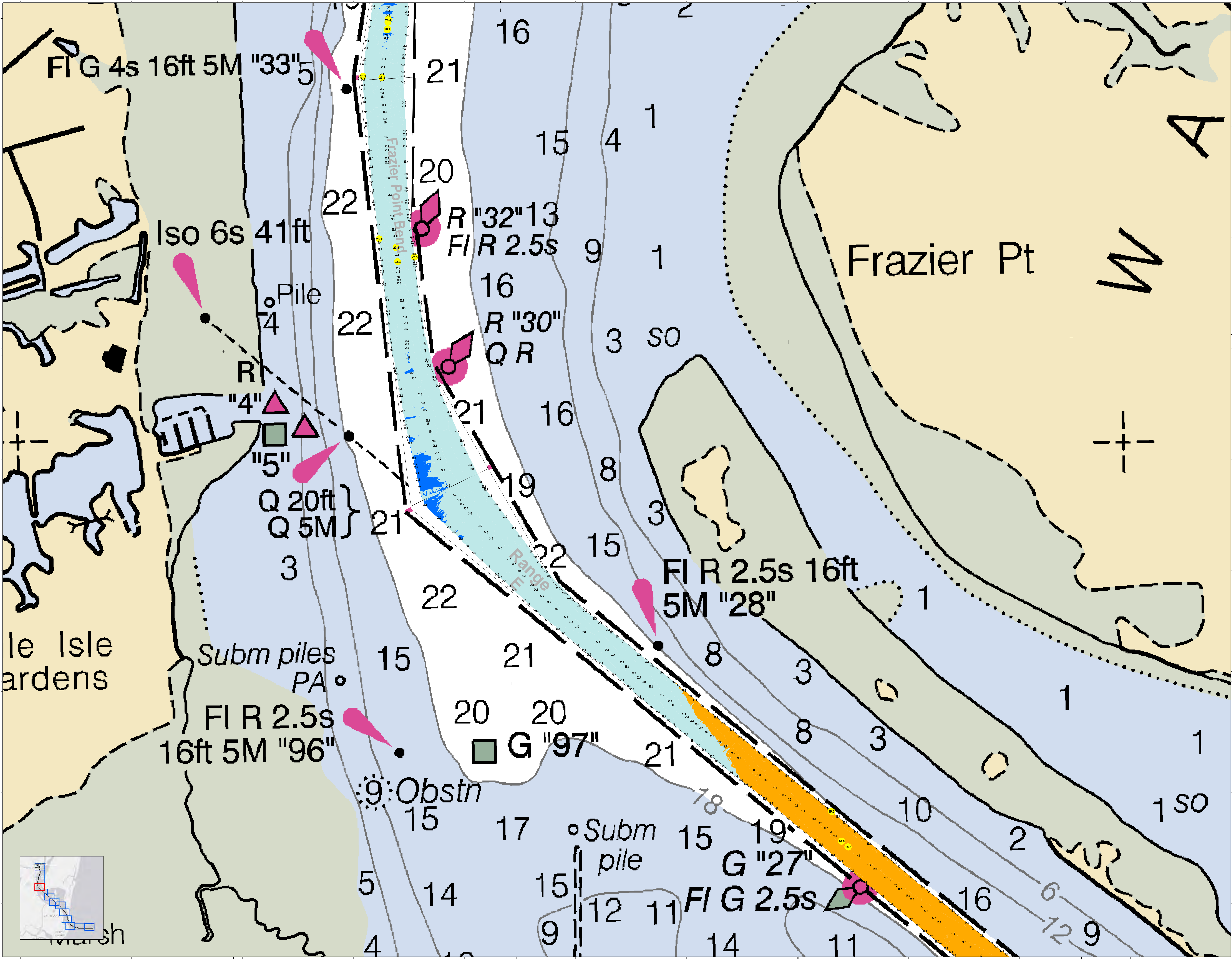
U.S. Army Corps of Engineers Charleston District Office Savannah Branch Barracks 400 Charleston, SC 29405 CESAC-GIS/SLUSACE.ARMY.MIL	Designed By: Jethro Software v3.82 Reviewed By: Jethro Software v3.82 Reference Scale: 1:25,000 Projection: NAD 1983 StatePlane South Carolina FIPS 3200 Feet	Survey Date: 28 FEB 2019 Production Date: 1 MAR 2019 Project Reference Number: 1600010 Sheet Title: CHANNEL Condition: CONDITION
---	--	--

**Georgetown Harbor Channel Survey**  
The information depicted on this map represents the results of surveys made on the dates indicated and can only be considered as indicating the general character of the bottom. It is not intended to be used as a substitute for a hydrographic survey. The user is advised to verify the accuracy of the data and to use appropriate caution when navigating in the area. The user is encouraged to use all prudent safety measures.

Concluded on: 28 FEB 2019  
Georgetown, South Carolina







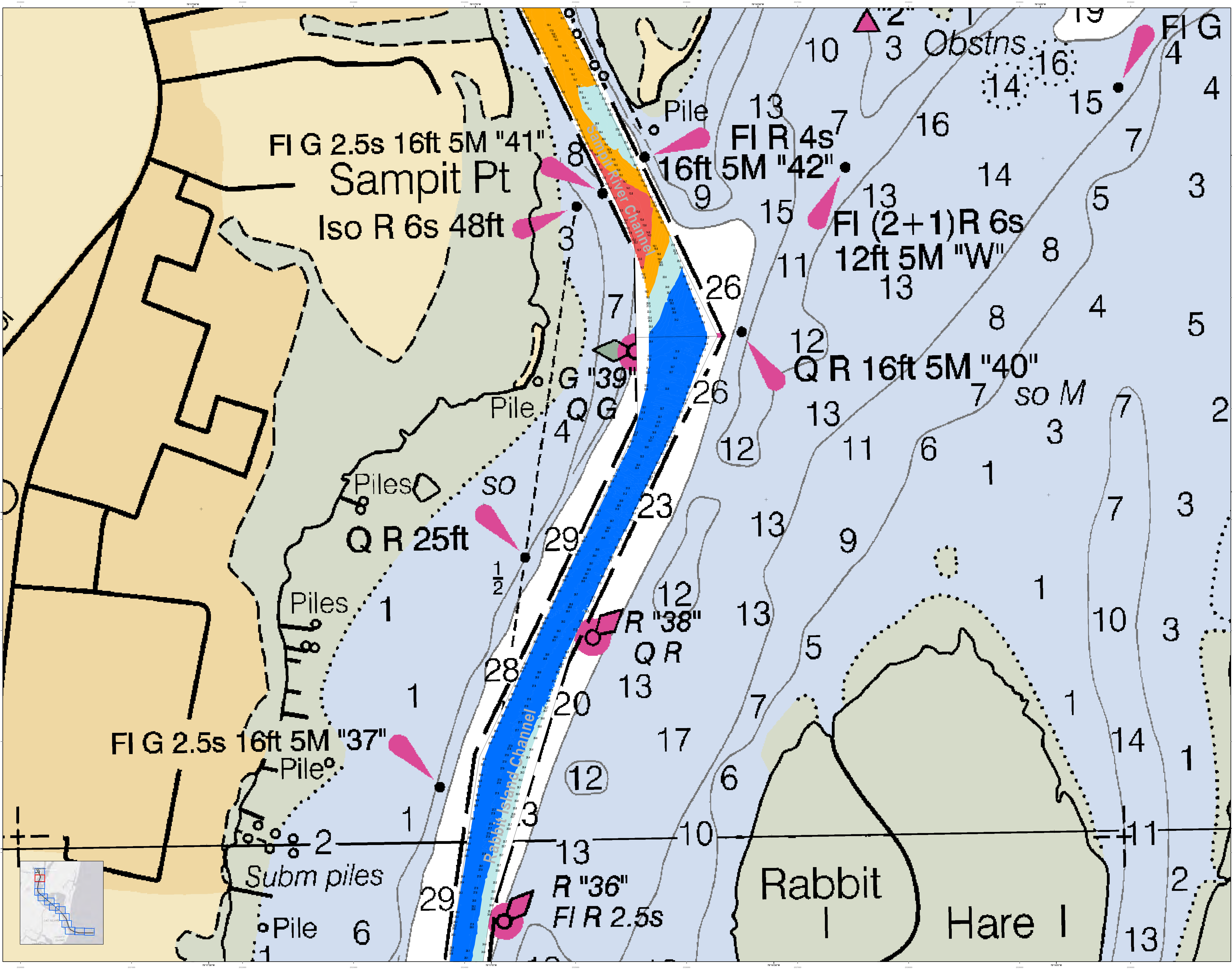
**U.S. Army Corps of Engineers**  
Charleston District

**Georgetown Harbor Channel Survey**  
The information depicted on this map represents the results of surveys made on the dates indicated and can only be considered as indicating the general character of the bottom. It is not intended to be used for navigation.

**Legend**

- Soundings:** 1. 10 to 15, 2. 16 to 20, 3. 21 to 25, 4. 26 to 30, 5. 31 to 35, 6. 36 to 40, 7. 41 to 45, 8. 46 to 50, 9. 51 to 55, 10. 56 to 60, 11. 61 to 65, 12. 66 to 70, 13. 71 to 75, 14. 76 to 80, 15. 81 to 85, 16. 86 to 90, 17. 91 to 95, 18. 96 to 100, 19. 101 to 105, 20. 106 to 110, 21. 111 to 115, 22. 116 to 120, 23. 121 to 125, 24. 126 to 130, 25. 131 to 135, 26. 136 to 140, 27. 141 to 145, 28. 146 to 150, 29. 151 to 155, 30. 156 to 160, 31. 161 to 165, 32. 166 to 170, 33. 171 to 175, 34. 176 to 180, 35. 181 to 185, 36. 186 to 190, 37. 191 to 195, 38. 196 to 200, 39. 201 to 205, 40. 206 to 210, 41. 211 to 215, 42. 216 to 220, 43. 221 to 225, 44. 226 to 230, 45. 231 to 235, 46. 236 to 240, 47. 241 to 245, 48. 246 to 250, 49. 251 to 255, 50. 256 to 260, 51. 261 to 265, 52. 266 to 270, 53. 271 to 275, 54. 276 to 280, 55. 281 to 285, 56. 286 to 290, 57. 291 to 295, 58. 296 to 300, 59. 301 to 305, 60. 306 to 310, 61. 311 to 315, 62. 316 to 320, 63. 321 to 325, 64. 326 to 330, 65. 331 to 335, 66. 336 to 340, 67. 341 to 345, 68. 346 to 350, 69. 351 to 355, 70. 356 to 360, 71. 361 to 365, 72. 366 to 370, 73. 371 to 375, 74. 376 to 380, 75. 381 to 385, 76. 386 to 390, 77. 391 to 395, 78. 396 to 400, 79. 401 to 405, 80. 406 to 410, 81. 411 to 415, 82. 416 to 420, 83. 421 to 425, 84. 426 to 430, 85. 431 to 435, 86. 436 to 440, 87. 441 to 445, 88. 446 to 450, 89. 451 to 455, 90. 456 to 460, 91. 461 to 465, 92. 466 to 470, 93. 471 to 475, 94. 476 to 480, 95. 481 to 485, 96. 486 to 490, 97. 491 to 495, 98. 496 to 500, 99. 501 to 505, 100. 506 to 510, 101. 511 to 515, 102. 516 to 520, 103. 521 to 525, 104. 526 to 530, 105. 531 to 535, 106. 536 to 540, 107. 541 to 545, 108. 546 to 550, 109. 551 to 555, 110. 556 to 560, 111. 561 to 565, 112. 566 to 570, 113. 571 to 575, 114. 576 to 580, 115. 581 to 585, 116. 586 to 590, 117. 591 to 595, 118. 596 to 600, 119. 601 to 605, 120. 606 to 610, 121. 611 to 615, 122. 616 to 620, 123. 621 to 625, 124. 626 to 630, 125. 631 to 635, 126. 636 to 640, 127. 641 to 645, 128. 646 to 650, 129. 651 to 655, 130. 656 to 660, 131. 661 to 665, 132. 666 to 670, 133. 671 to 675, 134. 676 to 680, 135. 681 to 685, 136. 686 to 690, 137. 691 to 695, 138. 696 to 700, 139. 701 to 705, 140. 706 to 710, 141. 711 to 715, 142. 716 to 720, 143. 721 to 725, 144. 726 to 730, 145. 731 to 735, 146. 736 to 740, 147. 741 to 745, 148. 746 to 750, 149. 751 to 755, 150. 756 to 760, 151. 761 to 765, 152. 766 to 770, 153. 771 to 775, 154. 776 to 780, 155. 781 to 785, 156. 786 to 790, 157. 791 to 795, 158. 796 to 800, 159. 801 to 805, 160. 806 to 810, 161. 811 to 815, 162. 816 to 820, 163. 821 to 825, 164. 826 to 830, 165. 831 to 835, 166. 836 to 840, 167. 841 to 845, 168. 846 to 850, 169. 851 to 855, 170. 856 to 860, 171. 861 to 865, 172. 866 to 870, 173. 871 to 875, 174. 876 to 880, 175. 881 to 885, 176. 886 to 890, 177. 891 to 895, 178. 896 to 900, 179. 901 to 905, 180. 906 to 910, 181. 911 to 915, 182. 916 to 920, 183. 921 to 925, 184. 926 to 930, 185. 931 to 935, 186. 936 to 940, 187. 941 to 945, 188. 946 to 950, 189. 951 to 955, 190. 956 to 960, 191. 961 to 965, 192. 966 to 970, 193. 971 to 975, 194. 976 to 980, 195. 981 to 985, 196. 986 to 990, 197. 991 to 995, 198. 996 to 1000, 199. 1001 to 1005, 200. 1006 to 1010, 201. 1011 to 1015, 202. 1016 to 1020, 203. 1021 to 1025, 204. 1026 to 1030, 205. 1031 to 1035, 206. 1036 to 1040, 207. 1041 to 1045, 208. 1046 to 1050, 209. 1051 to 1055, 210. 1056 to 1060, 211. 1061 to 1065, 212. 1066 to 1070, 213. 1071 to 1075, 214. 1076 to 1080, 215. 1081 to 1085, 216. 1086 to 1090, 217. 1091 to 1095, 218. 1096 to 1100, 219. 1101 to 1105, 220. 1106 to 1110, 221. 1111 to 1115, 222. 1116 to 1120, 223. 1121 to 1125, 224. 1126 to 1130, 225. 1131 to 1135, 226. 1136 to 1140, 227. 1141 to 1145, 228. 1146 to 1150, 229. 1151 to 1155, 230. 1156 to 1160, 231. 1161 to 1165, 232. 1166 to 1170, 233. 1171 to 1175, 234. 1176 to 1180, 235. 1181 to 1185, 236. 1186 to 1190, 237. 1191 to 1195, 238. 1196 to 1200, 239. 1201 to 1205, 240. 1206 to 1210, 241. 1211 to 1215, 242. 1216 to 1220, 243. 1221 to 1225, 244. 1226 to 1230, 245. 1231 to 1235, 246. 1236 to 1240, 247. 1241 to 1245, 248. 1246 to 1250, 249. 1251 to 1255, 250. 1256 to 1260, 251. 1261 to 1265, 252. 1266 to 1270, 253. 1271 to 1275, 254. 1276 to 1280, 255. 1281 to 1285, 256. 1286 to 1290, 257. 1291 to 1295, 258. 1296 to 1300, 259. 1301 to 1305, 260. 1306 to 1310, 261. 1311 to 1315, 262. 1316 to 1320, 263. 1321 to 1325, 264. 1326 to 1330, 265. 1331 to 1335, 266. 1336 to 1340, 267. 1341 to 1345, 268. 1346 to 1350, 269. 1351 to 1355, 270. 1356 to 1360, 271. 1361 to 1365, 272. 1366 to 1370, 273. 1371 to 1375, 274. 1376 to 1380, 275. 1381 to 1385, 276. 1386 to 1390, 277. 1391 to 1395, 278. 1396 to 1400, 279. 1401 to 1405, 280. 1406 to 1410, 281. 1411 to 1415, 282. 1416 to 1420, 283. 1421 to 1425, 284. 1426 to 1430, 285. 1431 to 1435, 286. 1436 to 1440, 287. 1441 to 1445, 288. 1446 to 1450, 289. 1451 to 1455, 290. 1456 to 1460, 291. 1461 to 1465, 292. 1466 to 1470, 293. 1471 to 1475, 294. 1476 to 1480, 295. 1481 to 1485, 296. 1486 to 1490, 297. 1491 to 1495, 298. 1496 to 1500, 299. 1501 to 1505, 300. 1506 to 1510, 301. 1511 to 1515, 302. 1516 to 1520, 303. 1521 to 1525, 304. 1526 to 1530, 305. 1531 to 1535, 306. 1536 to 1540, 307. 1541 to 1545, 308. 1546 to 1550, 309. 1551 to 1555, 310. 1556 to 1560, 311. 1561 to 1565, 312. 1566 to 1570, 313. 1571 to 1575, 314. 1576 to 1580, 315. 1581 to 1585, 316. 1586 to 1590, 317. 1591 to 1595, 318. 1596 to 1600, 319. 1601 to 1605, 320. 1606 to 1610, 321. 1611 to 1615, 322. 1616 to 1620, 323. 1621 to 1625, 324. 1626 to 1630, 325. 1631 to 1635, 326. 1636 to 1640, 327. 1641 to 1645, 328. 1646 to 1650, 329. 1651 to 1655, 330. 1656 to 1660, 331. 1661 to 1665, 332. 1666 to 1670, 333. 1671 to 1675, 334. 1676 to 1680, 335. 1681 to 1685, 336. 1686 to 1690, 337. 1691 to 1695, 338. 1696 to 1700, 339. 1701 to 1705, 340. 1706 to 1710, 341. 1711 to 1715, 342. 1716 to 1720, 343. 1721 to 1725, 344. 1726 to 1730, 345. 1731 to 1735, 346. 1736 to 1740, 347. 1741 to 1745, 348. 1746 to 1750, 349. 1751 to 1755, 350. 1756 to 1760, 351. 1761 to 1765, 352. 1766 to 1770, 353. 1771 to 1775, 354. 1776 to 1780, 355. 1781 to 1785, 356. 1786 to 1790, 357. 1791 to 1795, 358. 1796 to 1800, 359. 1801 to 1805, 360. 1806 to 1810, 361. 1811 to 1815, 362. 1816 to 1820, 363. 1821 to 1825, 364. 1826 to 1830, 365. 1831 to 1835, 366. 1836 to 1840, 367. 1841 to 1845, 368. 1846 to 1850, 369. 1851 to 1855, 370. 1856 to 1860, 371. 1861 to 1865, 372. 1866 to 1870, 373. 1871 to 1875, 374. 1876 to 1880, 375. 1881 to 1885, 376. 1886 to 1890, 377. 1891 to 1895, 378. 1896 to 1900, 379. 1901 to 1905, 380. 1906 to 1910, 381. 1911 to 1915, 382. 1916 to 1920, 383. 1921 to 1925, 384. 1926 to 1930, 385. 1931 to 1935, 386. 1936 to 1940, 387. 1941 to 1945, 388. 1946 to 1950, 389. 1951 to 1955, 390. 1956 to 1960, 391. 1961 to 1965, 392. 1966 to 1970, 393. 1971 to 1975, 394. 1976 to 1980, 395. 1981 to 1985, 396. 1986 to 1990, 397. 1991 to 1995, 398. 1996 to 2000, 399. 2001 to 2005, 400. 2006 to 2010, 401. 2011 to 2015, 402. 2016 to 2020, 403. 2021 to 2025, 404. 2026 to 2030, 405. 2031 to 2035, 406. 2036 to 2040, 407. 2041 to 2045, 408. 2046 to 2050, 409. 2051 to 2055, 410. 2056 to 2060, 411. 2061 to 2065, 412. 2066 to 2070, 413. 2071 to 2075, 414. 2076 to 2080, 415. 2081 to 2085, 416. 2086 to 2090, 417. 2091 to 2095, 418. 2096 to 2100, 419. 2101 to 2105, 420. 2106 to 2110, 421. 2111 to 2115, 422. 2116 to 2120, 423. 2121 to 2125, 424. 2126 to 2130, 425. 2131 to 2135, 426. 2136 to 2140, 427. 2141 to 2145, 428. 2146 to 2150, 429. 2151 to 2155, 430. 2156 to 2160, 431. 2161 to 2165, 432. 2166 to 2170, 433. 2171 to 2175, 434. 2176 to 2180, 435. 2181 to 2185, 436. 2186 to 2190, 437. 2191 to 2195, 438. 2196 to 2200, 439. 2201 to 2205, 440. 2206 to 2210, 441. 2211 to 2215, 442. 2216 to 2220, 443. 2221 to 2225, 444. 2226 to 2230, 445. 2231 to 2235, 446. 2236 to 2240, 447. 2241 to 2245, 448. 2246 to 2250, 449. 2251 to 2255, 450. 2256 to 2260, 451. 2261 to 2265, 452. 2266 to 2270, 453. 2271 to 2275, 454. 2276 to 2280, 455. 2281 to 2285, 456. 2286 to 2290, 457. 2291 to 2295, 458. 2296 to 2300, 459. 2301 to 2305, 460. 2306 to 2310, 461. 2311 to 2315, 462. 2316 to 2320, 463. 2321 to 2325, 464. 2326 to 2330, 465. 2331 to 2335, 466. 2336 to 2340, 467. 2341 to 2345, 468. 2346 to 2350, 469. 2351 to 2355, 470. 2356 to 2360, 471. 2361 to 2365, 472. 2366 to 2370, 473. 2371 to 2375, 474. 2376 to 2380, 475. 2381 to 2385, 476. 2386 to 2390, 477. 2391 to 2395, 478. 2396 to 2400, 479. 2401 to 2405, 480. 2406 to 2410, 481. 2411 to 2415, 482. 2416 to 2420, 483. 2421 to 2425, 484. 2426 to 2430, 485. 2431 to 2435, 486. 2436 to 2440, 487. 2441 to 2445, 488. 2446 to 2450, 489. 2451 to 2455, 490. 2456 to 2460, 491. 2461 to 2465, 492. 2466 to 2470, 493. 2471 to 2475, 494. 2476 to 2480, 495. 2481 to 2485, 496. 2486 to 2490, 497. 2491 to 2495, 498. 2496 to 2500, 499. 2501 to 2505, 500. 2506 to 2510, 501. 2511 to 2515, 502. 2516 to 2520, 503. 2521 to 2525, 504. 2526 to 2530, 505. 2531 to 2535, 506. 2536 to 2540, 507. 2541 to 2545, 508. 2546 to 2550, 509. 2551 to 2555, 510. 2556 to 2560, 511. 2561 to 2565, 512. 2566 to 2570, 513. 2571 to 2575, 514. 2576 to 2580, 515. 2581 to 2585, 516. 2586 to 2590, 517. 2591 to 2595, 518. 2596 to 2600, 519. 2601 to 2605, 520. 2606 to 2610, 521. 2611 to 2615, 522. 2616 to 2620, 523. 2621 to 2625, 524. 2626 to 2630, 525. 2631 to 2635, 526. 2636 to 2640, 527. 2641 to 2645, 528. 2646 to 2650, 529. 2651 to 2655, 530. 2656 to 2660, 531. 2661 to 2665, 532. 2666 to 2670, 533. 2671 to 2675, 534. 2676 to 2680, 535. 2681 to 2685, 536. 2686 to 2690, 537. 2691 to 2695, 538. 2696 to 2700, 539. 2701 to 2705, 540. 2706 to 2710, 541. 2711 to 2715, 542. 2716 to 2720, 543. 2721 to 2725, 544. 2726 to 2730, 545. 2731 to 2735, 546. 2736 to 2740, 547. 2741 to 2745, 548. 2746 to 2750, 549. 2751 to 2755, 550. 2756 to 2760, 551. 2761 to 2765, 552. 2766 to 2770, 553. 2771 to 2775, 554. 2776 to 2780, 555. 2781 to 2785, 556. 2786 to 2790, 557. 2791 to 2795, 558. 2796 to 2800, 559. 2801 to 2805, 560. 2806 to 2810, 561. 2811 to 2815, 562. 2816 to 2820, 563. 2821 to 2825, 564. 2826 to 2830, 565. 2831 to 2835, 566. 2836 to 2840, 567. 2841 to 2845, 568. 2846 to 2850, 569. 2851 to 2855, 570. 2856 to 2860, 571. 2861 to 2865, 572. 2866 to 2870, 573. 2871 to 2875, 574. 2876 to 2880, 575. 2881 to 2885, 576. 2886 to 2890, 577. 2891 to 2895, 578. 2896 to 2900, 579. 2901 to 2905, 580. 2906 to 2910, 581. 2911 to 2915, 582. 2916 to 2920, 583. 2921 to 2925, 584. 2926 to 2930, 585. 2931 to 2935, 586. 2936 to 2940, 587. 2941 to 2945, 588. 2946 to 2950, 589. 2951 to 2955, 590. 2956 to 2960, 591. 2961 to 2965, 592. 2966 to 2970, 593. 2971 to 2975, 594. 2976 to 2980, 595. 2981 to 2985, 596. 2986 to 2990, 597. 2991 to 2995, 598. 2996 to 3000, 599. 3001 to 3005, 600. 3006 to 3010, 601. 3011 to 3015, 602. 3016 to 3020, 603. 3021 to 3025, 604. 3026 to 3030, 605. 3031 to 3035, 606. 3036 to 3040, 607. 3041 to 3045, 608. 3046 to 3050, 609. 3051 to 3055, 610. 3056 to 3060, 611. 3061 to 3065, 612. 3066 to 3070, 613. 3071 to 3075, 614. 3076 to 3080, 615. 3081 to 3085, 616. 3086 to 3090, 617. 3091 to 3095, 618. 3096 to 3100, 619. 3101 to 3105, 620. 3106 to 3110, 621. 3111 to 3115, 622. 3116 to 3120, 623. 3121 to 3125, 624. 3126 to 3130, 625. 3131 to 3135, 626. 3136 to 3140, 627. 3141 to 3145, 628. 3146 to 3150, 629. 3151 to 3155, 630. 3156 to 3160, 631. 3161 to 3165, 632. 3166 to 3170, 633. 3171 to 3175, 634. 3176 to 3180, 635. 3181 to 3185, 636. 3186 to 3190, 637. 3191 to 3195, 638. 3196 to 3200, 639. 3201 to 3205, 640. 3206 to 3210, 641. 3211 to 3215, 642. 3216 to 3220, 643. 3221 to 3225, 644. 3226 to 3230, 645. 3231 to 3235, 646. 3236 to 3240, 647. 3241 to 3245, 648. 3246 to 3250, 649. 3251 to 3255, 650. 3256 to 3260, 651. 3261 to 3265, 652. 3266 to 3270, 653. 3271 to 3275, 654. 3276 to 3280, 655. 3281 to 3285, 656. 3286 to 3290, 657. 3291 to 3295, 658. 3296 to 3300, 659. 3301 to 3305, 660. 3306 to 3310, 661. 3311 to 3315, 662. 3316 to 3320, 663. 3321 to 3325, 664. 3326 to 3330, 665. 3331 to 3335, 666. 3336 to 3340, 667. 3341 to 3345, 668. 3346 to 3350, 669. 3351 to 3355, 670. 3356 to 3360, 671. 3361 to 3365, 672. 3366 to 3370, 673. 3371 to 3375, 674. 3376 to 3380, 675. 3381 to 3385, 676. 3386 to 3390, 677. 3391 to 3395, 678. 3396 to 3400, 679. 3401 to 3405, 680. 3406 to 3410, 681. 3411 to 3415, 682. 3416 to 3420, 683. 3421 to 3425, 684. 3426 to 3430, 685. 3431 to 3435, 686. 3436 to 3440, 687. 3441 to 3445, 688. 3446 to 3450, 689. 3451 to 3455, 690. 3456 to 3460, 691. 3461 to 3465, 692. 3466 to 3470, 693. 3471 to 3475, 694. 3476 to 3480, 695. 3481 to 3485, 696. 3486 to 3490, 697. 3491 to 3495, 698. 3496 to 3500, 699. 3501 to 3505, 700. 3506 to 3510, 701. 3511 to 3515, 702. 3516 to 3520, 703. 3521 to 3525, 704. 3526 to 3530, 705. 3531 to 3535, 706. 3536 to 3540, 707. 3541 to 3545, 708. 3546 to 3550, 709. 3551 to 3555, 710. 3556 to 3560, 711. 3561 to 3565, 712. 3566 to 3570, 713. 3571 to 3575, 714. 3576 to 3580, 715. 3581 to 3585, 716. 3586 to 3590, 717. 3591 to 3595, 718. 3596 to 3600, 719. 3601 to 3605, 720. 3606 to 3610, 721. 3611 to 3615, 722. 3616 to 3620, 723. 3621 to 3625, 724. 3626 to 3630, 725. 3631 to 3635, 726. 3636 to 3640, 727. 3641 to 3645, 728. 3646 to 3650, 729. 3651 to 3655, 730. 3656 to 3660, 731. 3661 to 3665, 732. 3666 to 3670, 733. 3671 to 3675, 734. 3676 to 3680, 735. 3681 to 3685, 736. 3686 to 3690, 737. 3691 to 3695, 738. 3





U.S. Army Corps of Engineers  
Charleston District

**Georgetown Harbor Channel Survey**  
The information depicted on this map represents the results of surveys made on the dates indicated and can only be considered as indicating the general location of obstructions.

Concluded on: 28 FEB 2019  
Georgetown, South Carolina

**Legend**

- Obstns: Pink teardrop symbol
- Channel: Blue shaded area
- Depth Soundings: Numbers in circles
- Obstructions: Pink teardrop symbols
- Channel Boundaries: Dashed lines
- Obstructions: Pink teardrop symbols
- Channel Boundaries: Dashed lines
- Obstructions: Pink teardrop symbols

**Scale**  
1 inch = 250 feet

**Production Date:** 1 MAR 2019  
**Survey Date:** 28 FEB 2019  
**Project Reference Number:** 13000  
**Scale:** 1 inch = 250 feet  
**Condition:** CONDITION

**Designed By:** J. B. B. (JBB)  
**Reviewed By:** J. B. B. (JBB)  
**Scale:** 1 inch = 250 feet  
**Projection:** NAD 1983 StatePlane South Carolina FIPS 3200 Feet

U.S. Army Corps of Engineers  
Charleston District  
Savannah Branch  
800 Broad Street  
Charleston, SC 29403  
CESAC-GIS/USACE/ARMY/AVIL

SHEET REFERENCE NUMBER  
C001  
SHEET 12 OF 13

