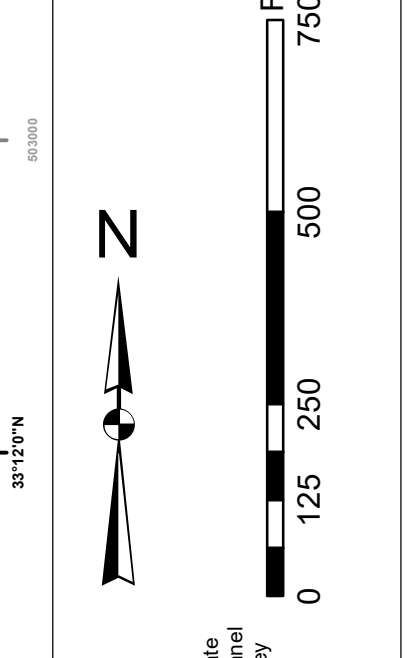


In accordance with the U.S. Army Corps of Engineers, Charleston District Office, Navigation Channel Survey for the Winyah Bay Entrance, South Carolina, the information depicted on this map represents the results of surveys made on the dates indicated and can only be considered as indicating the general character of the channel. It is not intended to be used for navigation. Mariners are encouraged to use all prudent safety measures.

**Production Notes:**  
1. This chart is the photographic reproduction of the original chart.  
2. All soundings are in feet unless otherwise indicated.  
3. Soundings are to mean low water.  
4. All depths are to mean low water.  
5. All depths are to mean low water.  
6. All depths are to mean low water.  
7. All depths are to mean low water.  
8. All depths are to mean low water.  
9. All depths are to mean low water.  
10. All depths are to mean low water.



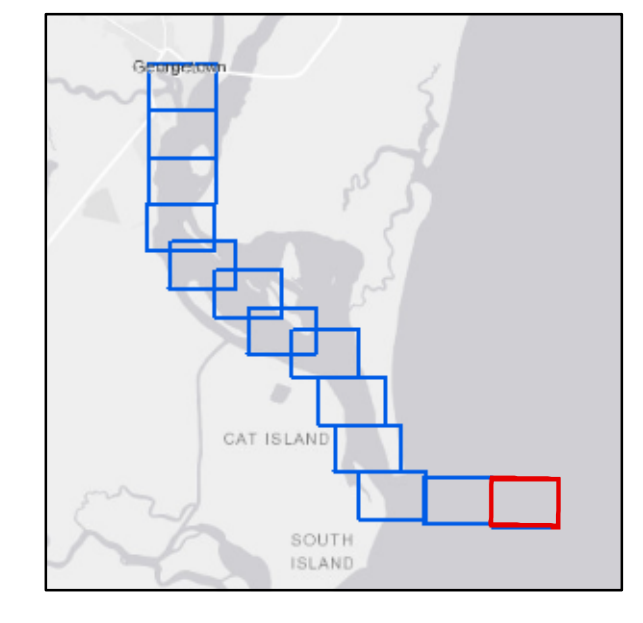
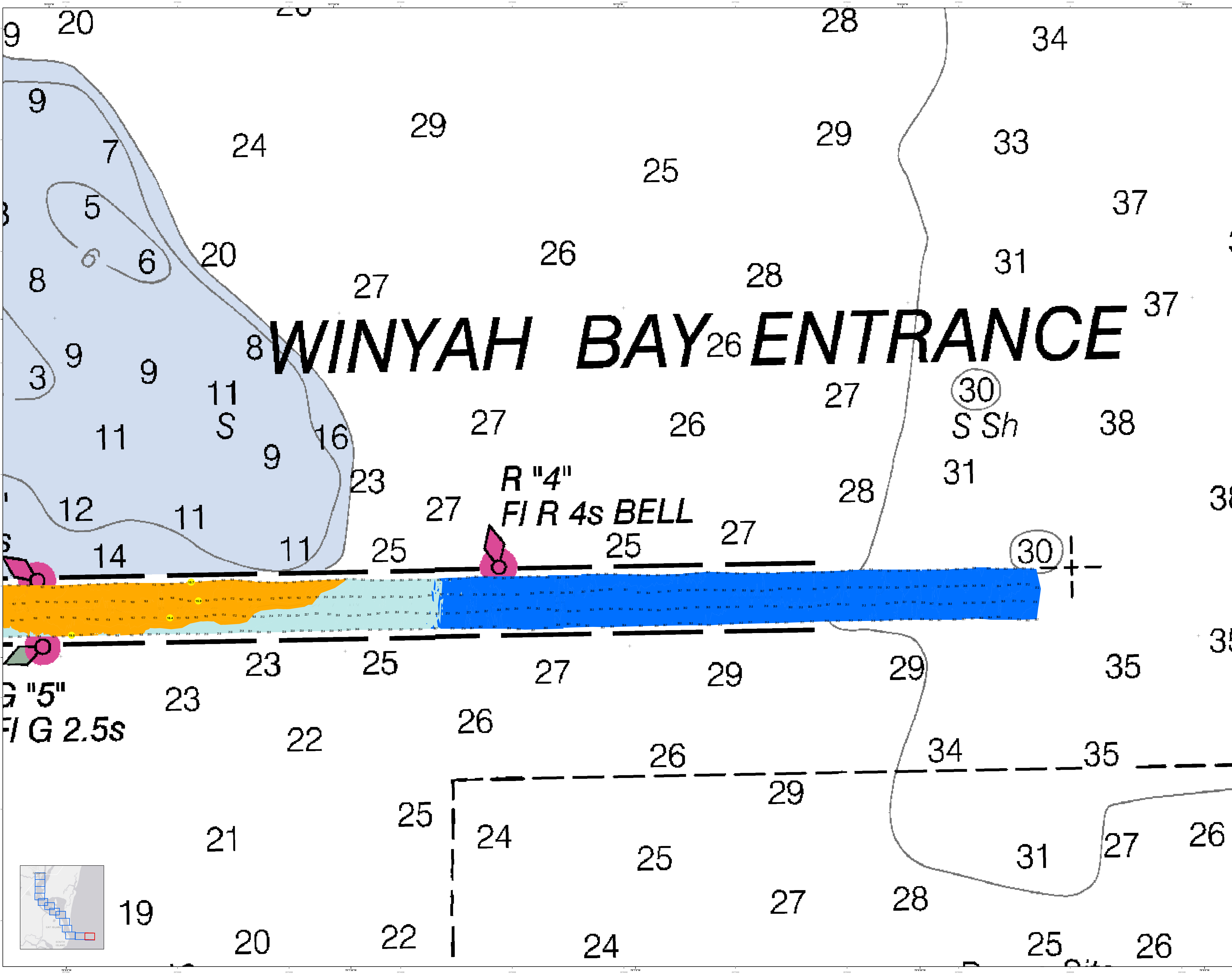
**Depth Soundings:**  
1. 1 to 10 fathoms  
2. 11 to 15 fathoms  
3. 16 to 20 fathoms  
4. 21 to 25 fathoms  
5. 26 to 30 fathoms  
6. 31 to 35 fathoms  
7. 36 to 40 fathoms  
8. 41 to 45 fathoms  
9. 46 to 50 fathoms  
10. 51 to 55 fathoms  
11. 56 to 60 fathoms  
12. 61 to 65 fathoms  
13. 66 to 70 fathoms  
14. 71 to 75 fathoms  
15. 76 to 80 fathoms  
16. 81 to 85 fathoms  
17. 86 to 90 fathoms  
18. 91 to 95 fathoms  
19. 96 to 100 fathoms

**Chart Symbols:**  
1. Red buoy  
2. Green buoy  
3. White buoy  
4. Black buoy  
5. Yellow buoy  
6. Orange buoy  
7. Blue buoy  
8. Purple buoy  
9. Pink buoy  
10. Brown buoy  
11. Grey buoy  
12. White buoy  
13. Black buoy  
14. Red buoy  
15. Green buoy  
16. White buoy  
17. Black buoy  
18. Yellow buoy  
19. Orange buoy  
20. Blue buoy  
21. Purple buoy  
22. Pink buoy  
23. Brown buoy  
24. Grey buoy  
25. White buoy  
26. Black buoy  
27. Red buoy  
28. Green buoy  
29. White buoy  
30. Black buoy  
31. Yellow buoy  
32. Orange buoy  
33. Blue buoy  
34. Purple buoy  
35. Pink buoy  
36. Brown buoy  
37. Grey buoy  
38. White buoy  
39. Black buoy  
40. Red buoy  
41. Green buoy  
42. White buoy  
43. Black buoy  
44. Yellow buoy  
45. Orange buoy  
46. Blue buoy  
47. Purple buoy  
48. Pink buoy  
49. Brown buoy  
50. Grey buoy

**Legend:**  
1. Channel  
2. Shoal  
3. Bank  
4. Reef  
5. Rock  
6. Obstruction  
7. Light  
8. Buoy  
9. Beacon  
10. Spar buoy  
11. Daymark  
12. Nightmark  
13. Daymark  
14. Nightmark  
15. Daymark  
16. Nightmark  
17. Daymark  
18. Nightmark  
19. Daymark  
20. Nightmark  
21. Daymark  
22. Nightmark  
23. Daymark  
24. Nightmark  
25. Daymark  
26. Nightmark  
27. Daymark  
28. Nightmark  
29. Daymark  
30. Nightmark  
31. Daymark  
32. Nightmark  
33. Daymark  
34. Nightmark  
35. Daymark  
36. Nightmark  
37. Daymark  
38. Nightmark  
39. Daymark  
40. Nightmark  
41. Daymark  
42. Nightmark  
43. Daymark  
44. Nightmark  
45. Daymark  
46. Nightmark  
47. Daymark  
48. Nightmark  
49. Daymark  
50. Nightmark

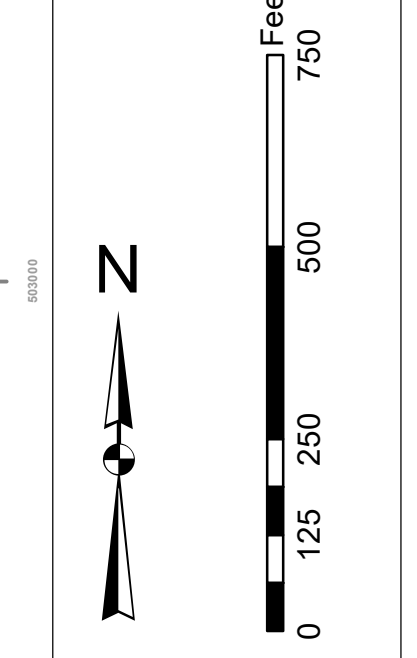
Designed By:	U.S. Army Corps of Engineers Charleston District Office	Produced By:	U.S. Army Corps of Engineers Charleston District Office
Reviewed By:	U.S. Army Corps of Engineers Charleston District Office	Project Reference Number:	15 SEP 2021
Scale:	1 inch = 250 feet	Chart Number:	15 SEP 2021
Projection:	NAD 1983 StatePlane South Carolina FIPS 3900 Feet	Chart Title:	Winyah Bay Entrance

**Georgetown Harbor Channel Survey**  
The information depicted on this map represents the results of surveys made on the dates indicated and can only be considered as indicating the general character of the channel. It is not intended to be used for navigation. Mariners are encouraged to use all prudent safety measures.  
Concluded on: 15 SEP 2021  
Georgetown, South Carolina



In this area, the U.S. Army Corps of Engineers, Charleston District Office, has been authorized to issue a permit for the construction of a structure in the navigational channel. The permit is issued on the condition that the structure shall not be a hazard to navigation and shall not be a detriment to the public interest. The permit is issued on the condition that the structure shall not be a hazard to navigation and shall not be a detriment to the public interest. The permit is issued on the condition that the structure shall not be a hazard to navigation and shall not be a detriment to the public interest.

**Production Notes:**  
1. This is a preliminary chart.  
2. The information on this chart is based on the best available information.  
3. Changes are indicated by the date and time of the survey.  
4. The information on this chart is based on the best available information.  
5. Changes are indicated by the date and time of the survey.

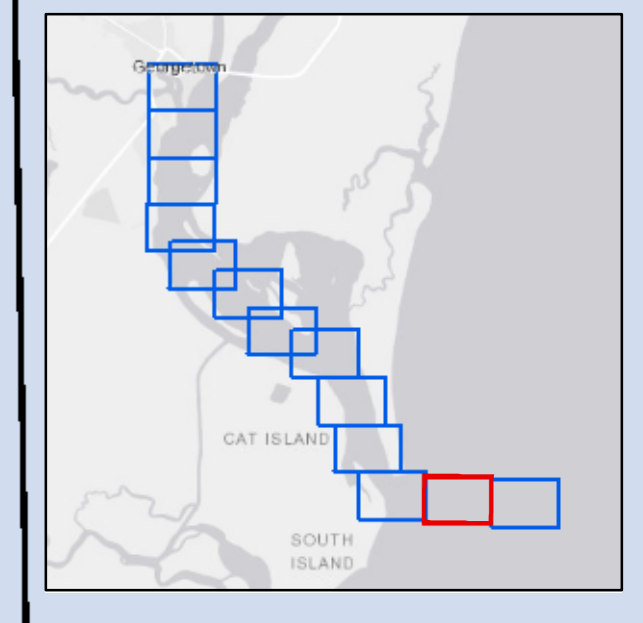
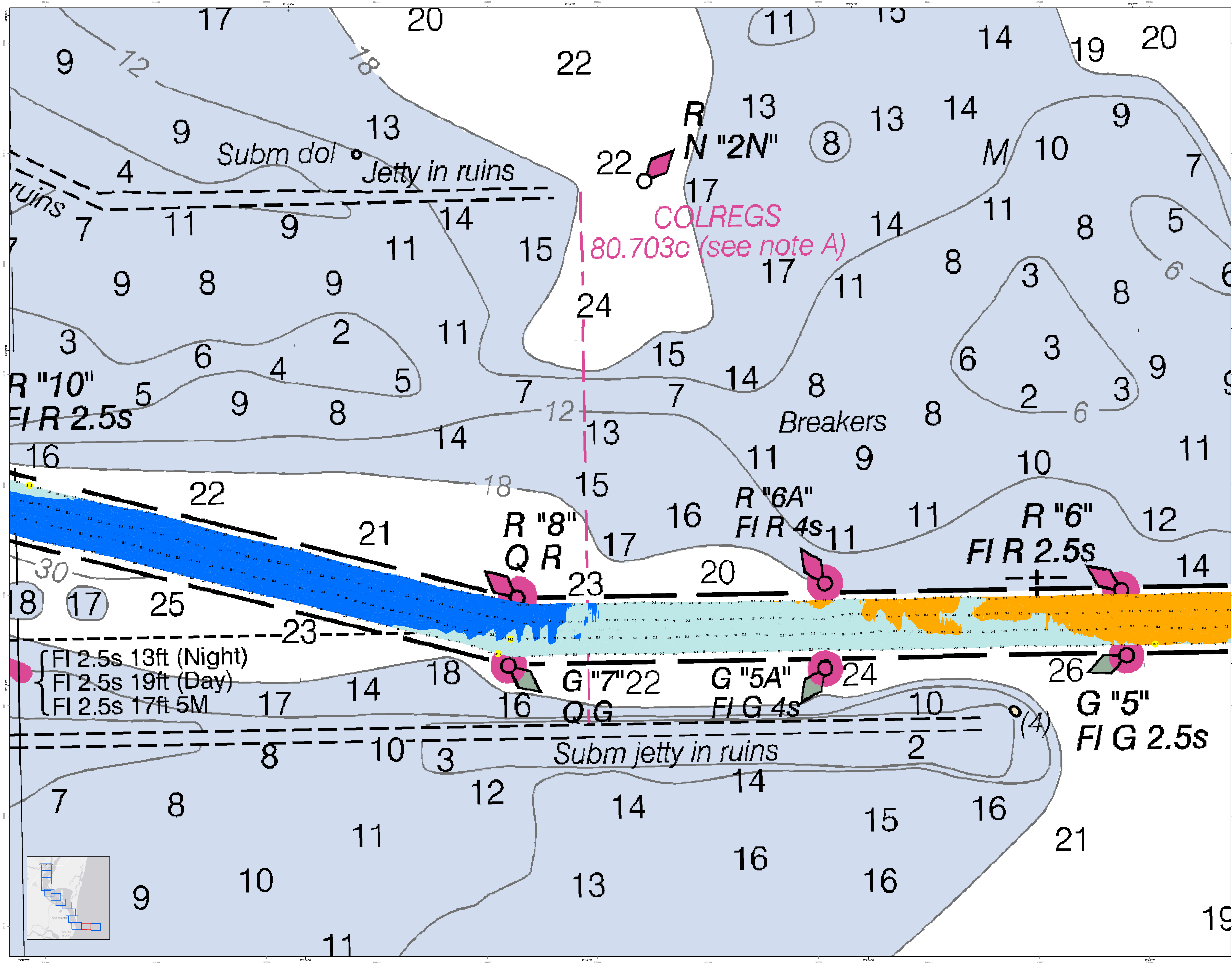


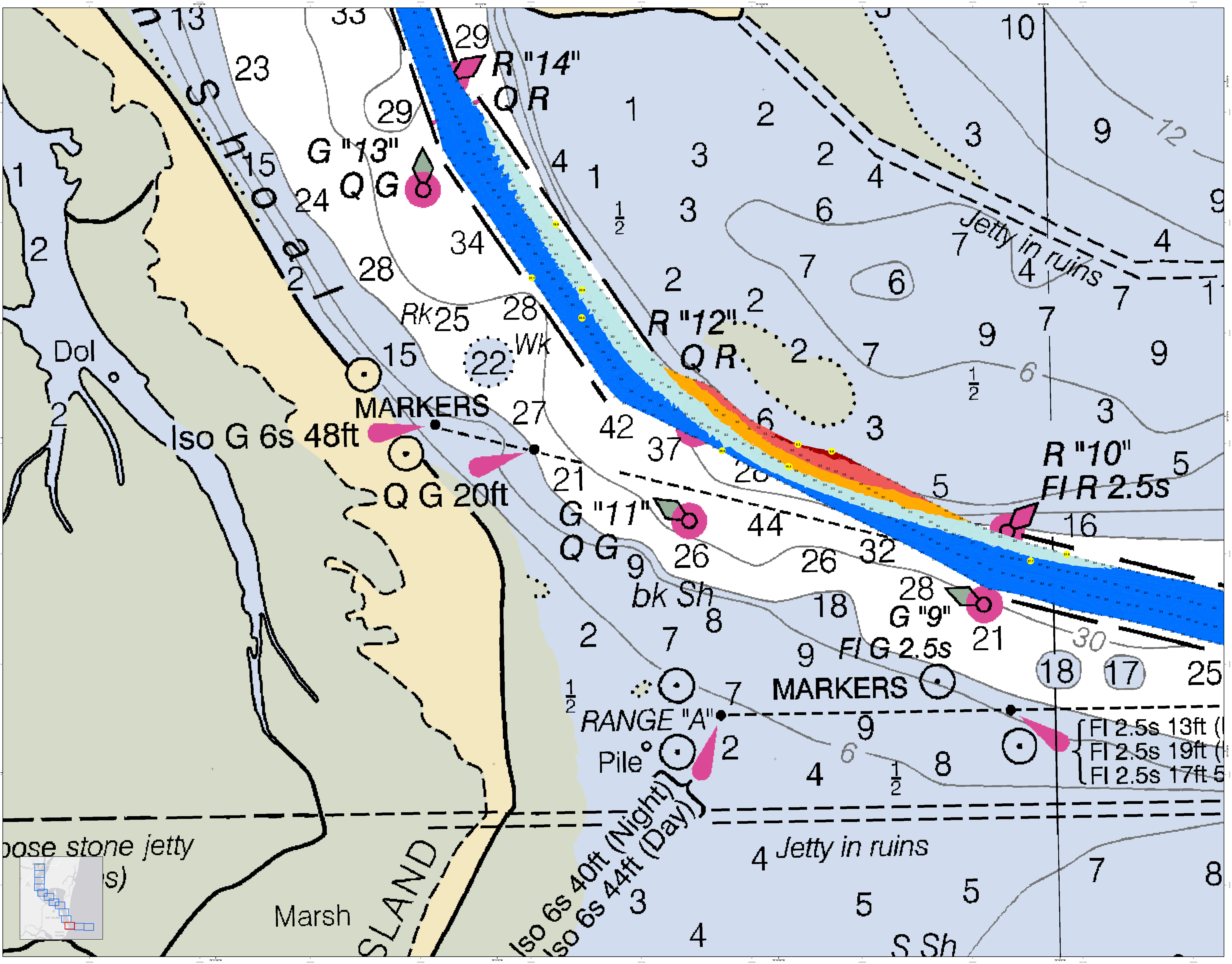
**Legend:**  
Soundings: 1 to 10, 11 to 20, 21 to 30, 31 to 40, 41 to 50, 51 to 60, 61 to 70, 71 to 80, 81 to 90, 91 to 100  
Obstructions: 1 to 10, 11 to 20, 21 to 30, 31 to 40, 41 to 50, 51 to 60, 61 to 70, 71 to 80, 81 to 90, 91 to 100  
Breakers: 1 to 10, 11 to 20, 21 to 30, 31 to 40, 41 to 50, 51 to 60, 61 to 70, 71 to 80, 81 to 90, 91 to 100  
Submerged: 1 to 10, 11 to 20, 21 to 30, 31 to 40, 41 to 50, 51 to 60, 61 to 70, 71 to 80, 81 to 90, 91 to 100  
Light: 1 to 10, 11 to 20, 21 to 30, 31 to 40, 41 to 50, 51 to 60, 61 to 70, 71 to 80, 81 to 90, 91 to 100

**Legend:**  
Obstructions: 1 to 10, 11 to 20, 21 to 30, 31 to 40, 41 to 50, 51 to 60, 61 to 70, 71 to 80, 81 to 90, 91 to 100  
Breakers: 1 to 10, 11 to 20, 21 to 30, 31 to 40, 41 to 50, 51 to 60, 61 to 70, 71 to 80, 81 to 90, 91 to 100  
Submerged: 1 to 10, 11 to 20, 21 to 30, 31 to 40, 41 to 50, 51 to 60, 61 to 70, 71 to 80, 81 to 90, 91 to 100  
Light: 1 to 10, 11 to 20, 21 to 30, 31 to 40, 41 to 50, 51 to 60, 61 to 70, 71 to 80, 81 to 90, 91 to 100

Designed By:	U.S. Army Corps of Engineers	Production Date:	15 SEP 2021
Reviewed By:	U.S. Army Corps of Engineers	Project Reference Number:	15 SEP 2021
Scale:	1 inch = 250 feet	Survey Station:	CONDITION
Projection:	NAD 1983 StatePlane South Carolina FIPS 3900 Feet	Scale:	1 inch = 250 feet

**Georgetown Harbor Channel Survey**  
The information depicted on this map represents the results of surveys made on the dates indicated and can only be considered as indicating the general character of the channel. It is not to be used for navigation.  
Concluded on: 15 SEP 2021  
Georgetown, South Carolina





U.S. Army Corps of Engineers  
Charleston District

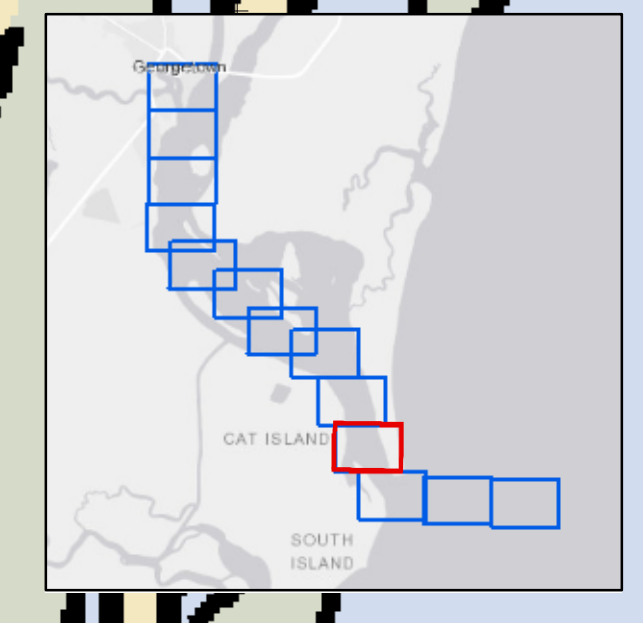
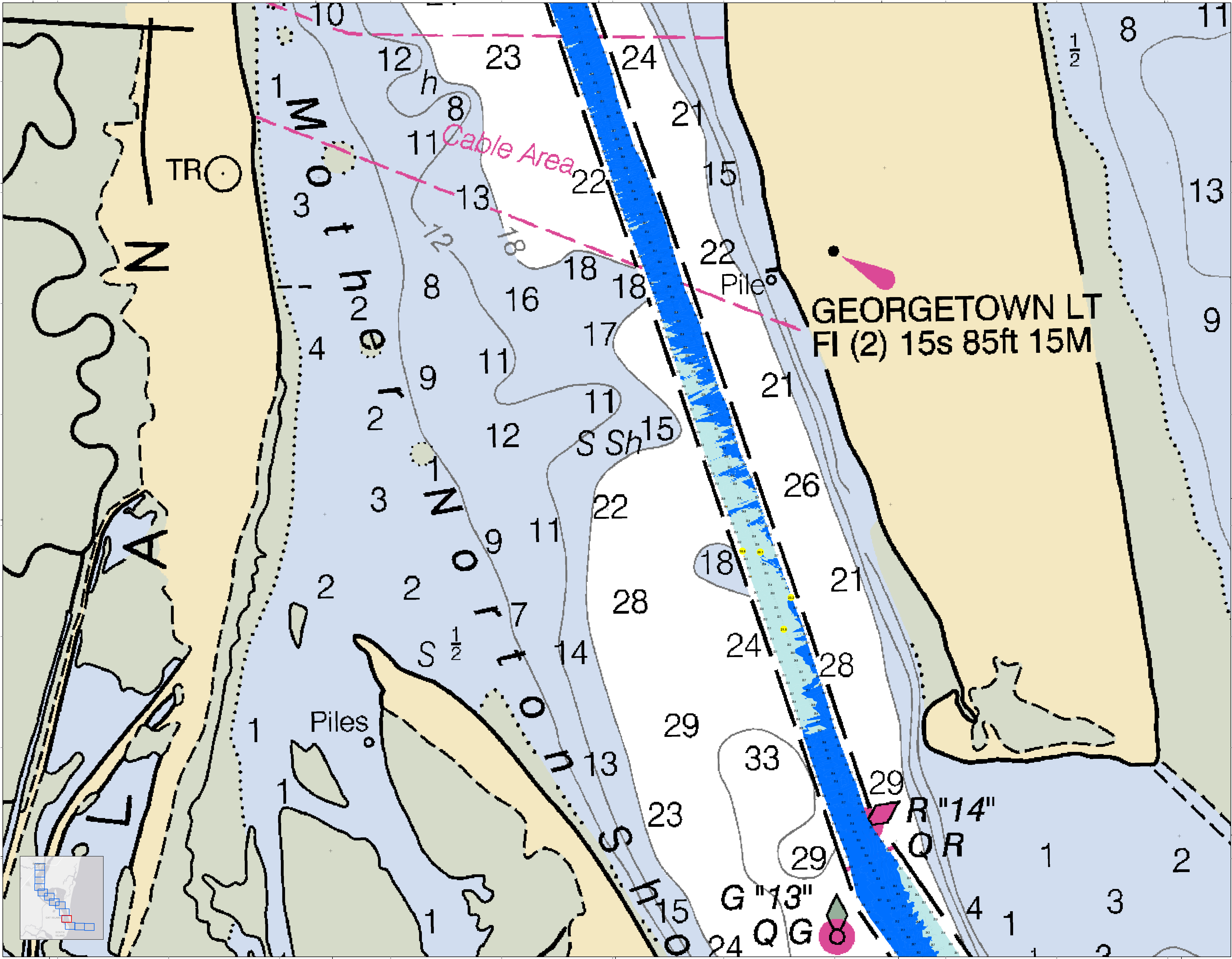
Production Date: 15 SEP 2021 20 SEP 2021  
 Survey Date: 15 SEP 2021  
 Project Reference Number: 15300  
 Survey Station: 15300  
 Revision: 15300  
 Scale: 1 inch = 250 feet  
 Projection: NAD 1983 StatePlane South Carolina FIPS 3800 Feet

U.S. Army Corps of Engineers  
Charleston District  
 600 Broad Street  
 Charleston, SC 29403  
 843-325-8000

Georgetown Harbor Channel Survey  
 The information depicted on this map represents the results of surveys made on the dates indicated and can only be considered as indicating the general location of the objects shown.

Concluded on: 15 SEP 2021  
 Georgetown, South Carolina

SHEET REFERENCE NUMBER: C001  
 SHEET 3 OF 13



**U.S. Army Corps of Engineers**  
Charleston District

**Georgetown Harbor Channel Survey**  
The information depicted on this map represents the results of surveys made on the dates indicated and can only be considered as indicating the general character of the bottom. It is not intended to be used for navigation. It is recommended that users consult the latest edition of the Hydrographic Survey of the Coast of South Carolina, Volume 1, for the most current information.

**Production Date:** 20 SEP 2021  
**Survey Date:** 15 SEP 2021  
**Project Reference Number:** 2020010  
**Survey Station:** CONDITION

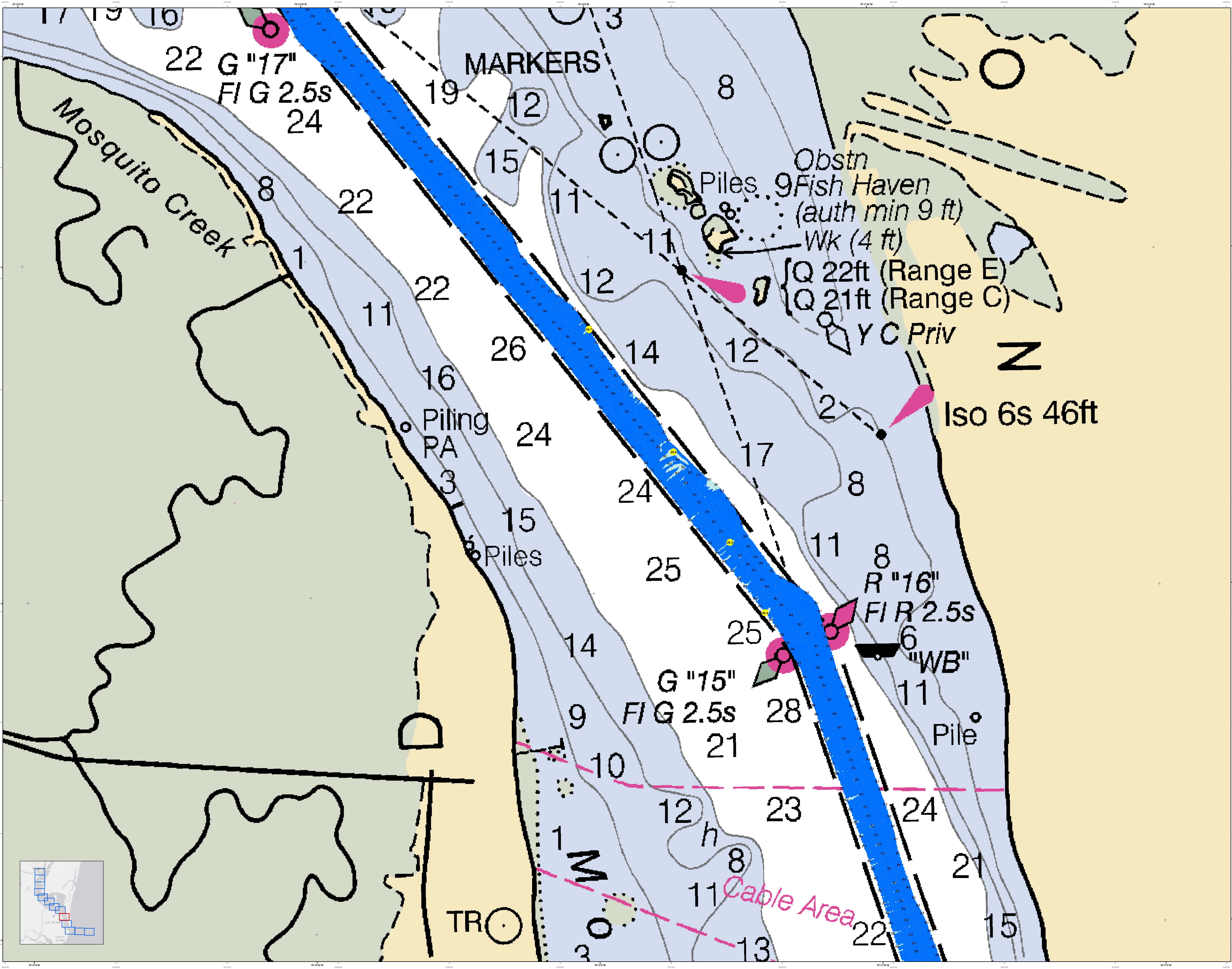
**Designed By:** J. H. B. / **Reviewed By:** J. H. B. / **Checked By:** J. H. B. / **Project Manager:** J. H. B.

**Scale:** 1 inch = 250 feet  
**Projection:** NAD 1983 StatePlane South Carolina FIPS 3800 Feet

**Legend:**  
 - Soundings: 1 to 30 feet (various colors)  
 - Cable Area: Blue shaded area  
 - Light Structure: Pink teardrop symbol  
 - Piles: Small circles  
 - Obstructions: Various symbols

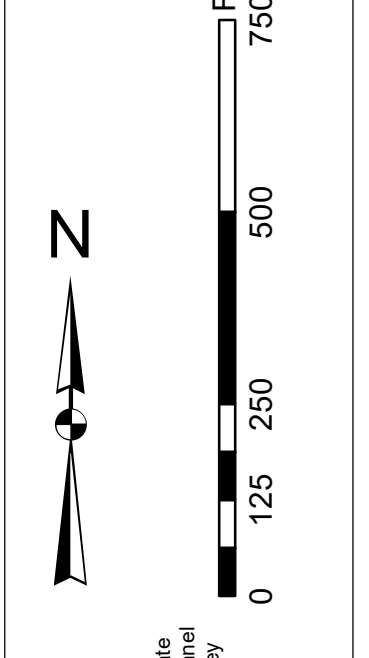
**Scale:** 0 to 750 feet  
**North Arrow:** Indicated

**Sheet Reference Number:** C001  
**Sheet 4 of 13**



**Production Note:**  
This chart is a reproduction of the original chart and is not intended to be used as a substitute for the original chart. It is not intended to be used as a substitute for the original chart. It is not intended to be used as a substitute for the original chart.

**Vertical Datum:**  
Mean Low Water  
Mean High Water  
Lowest Low Water  
Highest High Water



**Chart Symbols:**  
Light  
Buoy  
Obstruction  
Pile  
Wreck  
Rock  
Island  
Islet  
Point  
Breaker  
Light  
Lighted Buoy  
Lighted Pile  
Lighted Wreck  
Lighted Rock  
Lighted Island  
Lighted Islet  
Lighted Point  
Lighted Breaker

**Chart Symbols:**  
Light  
Buoy  
Obstruction  
Pile  
Wreck  
Rock  
Island  
Islet  
Point  
Breaker  
Light  
Lighted Buoy  
Lighted Pile  
Lighted Wreck  
Lighted Rock  
Lighted Island  
Lighted Islet  
Lighted Point  
Lighted Breaker

**Chart Symbols:**  
Light  
Buoy  
Obstruction  
Pile  
Wreck  
Rock  
Island  
Islet  
Point  
Breaker  
Light  
Lighted Buoy  
Lighted Pile  
Lighted Wreck  
Lighted Rock  
Lighted Island  
Lighted Islet  
Lighted Point  
Lighted Breaker

**Chart Symbols:**  
Light  
Buoy  
Obstruction  
Pile  
Wreck  
Rock  
Island  
Islet  
Point  
Breaker  
Light  
Lighted Buoy  
Lighted Pile  
Lighted Wreck  
Lighted Rock  
Lighted Island  
Lighted Islet  
Lighted Point  
Lighted Breaker

Designed By:	Survey Date:	Production Date:
Reviewed By:	15 SEP 2021	20 SEP 2021
Revised By:	Project Reference Number:	Project Reference Number:
Revised By:	15000	15000
Revised By:	Scale:	Scale:
Revised By:	1 inch = 250 Feet	1 inch = 250 Feet
Revised By:	Projection:	Projection:
Revised By:	NAD 1983 StatePlane South Carolina FIPS 3800 Feet	NAD 1983 StatePlane South Carolina FIPS 3800 Feet

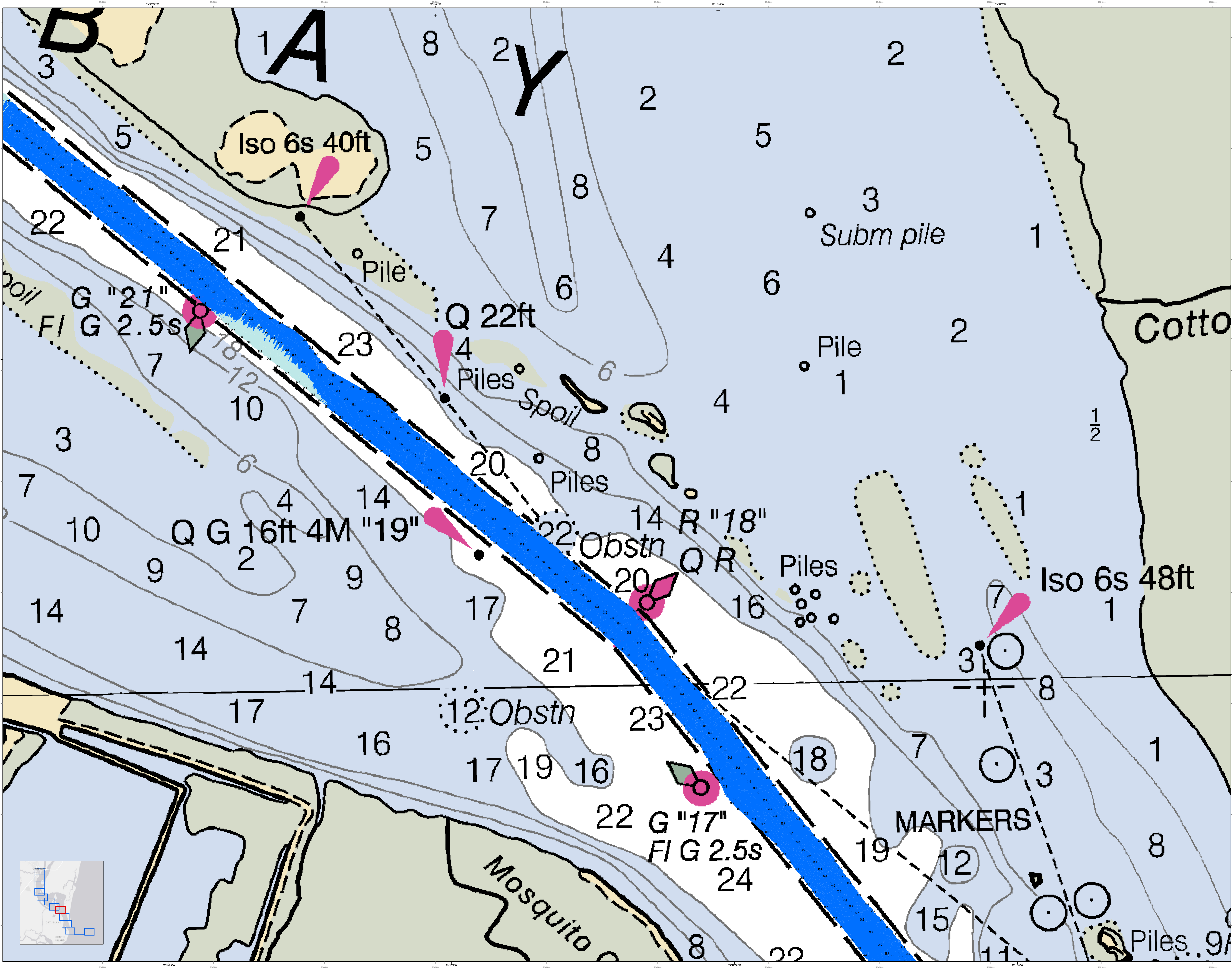
U.S. Army Corps of Engineers	Charleston District
U.S. Army Corps of Engineers	Charleston District
U.S. Army Corps of Engineers	Charleston District
U.S. Army Corps of Engineers	Charleston District

**Georgetown Harbor Channel Survey**  
The information depicted on this map represents the results of surveys made on the dates indicated and can only be considered as indicating the general character of the channel and shoals.  
Concluded on: 15 SEP 2021  
Georgetown, South Carolina

**Georgetown Harbor Channel Survey**  
The information depicted on this map represents the results of surveys made on the dates indicated and can only be considered as indicating the general character of the channel and shoals.  
Concluded on: 15 SEP 2021  
Georgetown, South Carolina

**Georgetown Harbor Channel Survey**  
The information depicted on this map represents the results of surveys made on the dates indicated and can only be considered as indicating the general character of the channel and shoals.  
Concluded on: 15 SEP 2021  
Georgetown, South Carolina

**Georgetown Harbor Channel Survey**  
The information depicted on this map represents the results of surveys made on the dates indicated and can only be considered as indicating the general character of the channel and shoals.  
Concluded on: 15 SEP 2021  
Georgetown, South Carolina



**U.S. Army Corps of Engineers**  
Charleston District

**Georgetown Harbor Channel Survey**  
The information depicted on this map represents the results of surveys made on the dates indicated and can only be considered as indicating the general location of obstructions. It is not intended to be used for navigation.

Produced on: **15 SEP 2021**  
Georgetown, South Carolina

**Legend**

- Obstruction
- Survey Marker
- Channel
- Depth
- Obstruction
- Survey Marker
- Channel
- Depth

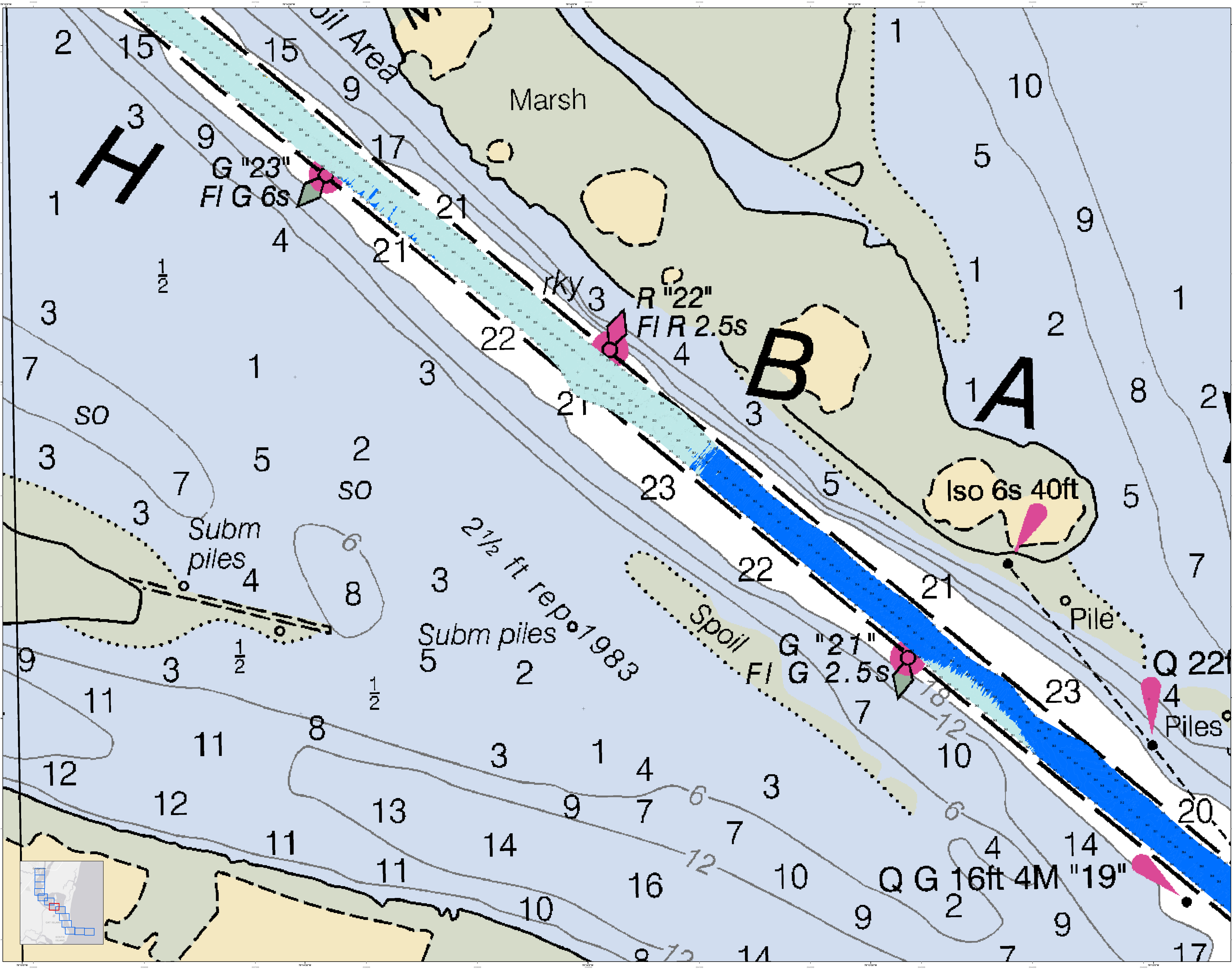
**Scale**  
1 inch = 250 feet

**Projection**  
NAD 1983 StatePlane South Carolina FIPS 3800 Feet

**Metadata**

Designed By:	U.S. Army Corps of Engineers	Production Date:	15 SEP 2021
Reviewed By:	U.S. Army Corps of Engineers	Project Reference Number:	15 SEP 2021
Scale:	1:25,000	Survey Station:	PC001D
Release Date:	15 SEP 2021	Survey State:	CONDITION
Project:	NAD 1983 StatePlane South Carolina FIPS 3800 Feet	Scale:	1 inch = 250 feet

**Sheet Reference**  
C001  
SHEET 6 OF 13



**U.S. Army Corps of Engineers**  
Charleston District

**Production Notes:**  
1. This chart is a preliminary chart and is subject to change without notice.  
2. This chart is not to be used for navigation purposes.  
3. This chart is not to be used for engineering purposes.  
4. This chart is not to be used for legal purposes.  
5. This chart is not to be used for any other purpose.

**Scale:** 1 inch = 250 feet

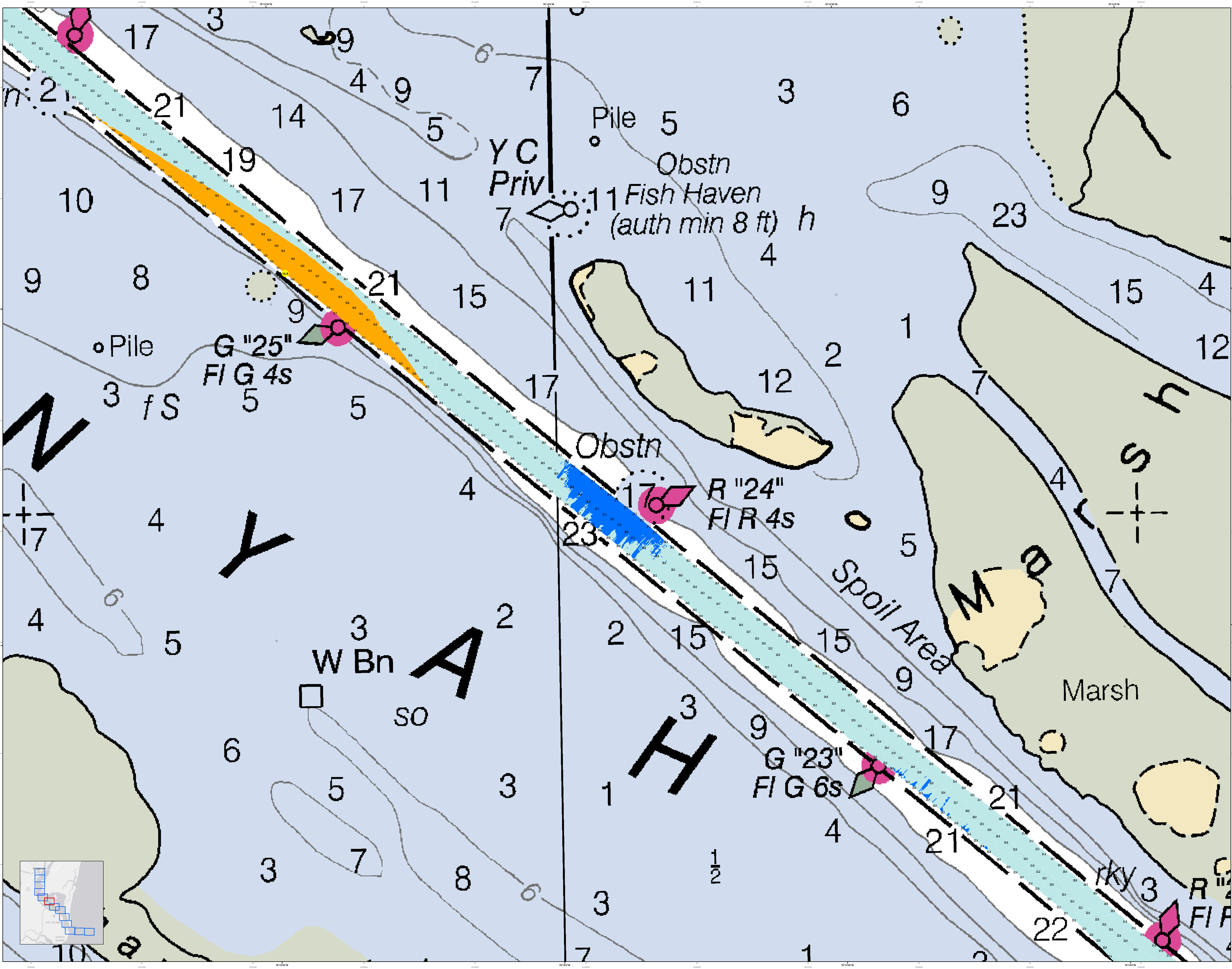
**Legend:**  
 - Blue: 20 ft or deeper  
 - Light Blue: 15 to 20 ft  
 - Yellow: 10 to 15 ft  
 - Orange: 5 to 10 ft  
 - Red: 0 to 5 ft  
 - Green: 0 to 5 ft  
 - Pink: 0 to 5 ft  
 - Black: 0 to 5 ft  
 - Dashed: 0 to 5 ft  
 - Dotted: 0 to 5 ft  
 - Solid: 0 to 5 ft  
 - Star: 0 to 5 ft  
 - Circle: 0 to 5 ft  
 - Square: 0 to 5 ft  
 - Triangle: 0 to 5 ft  
 - Diamond: 0 to 5 ft  
 - Hexagon: 0 to 5 ft  
 - Octagon: 0 to 5 ft  
 - Circle with cross: 0 to 5 ft  
 - Square with cross: 0 to 5 ft  
 - Triangle with cross: 0 to 5 ft  
 - Diamond with cross: 0 to 5 ft  
 - Hexagon with cross: 0 to 5 ft  
 - Octagon with cross: 0 to 5 ft  
 - Circle with cross: 0 to 5 ft  
 - Square with cross: 0 to 5 ft  
 - Triangle with cross: 0 to 5 ft  
 - Diamond with cross: 0 to 5 ft  
 - Hexagon with cross: 0 to 5 ft  
 - Octagon with cross: 0 to 5 ft

Designed By:	U.S. Army Corps of Engineers	Production Date:	15 SEP 2021
Reviewed By:	U.S. Army Corps of Engineers	Project Reference Number:	20 SEP 2021
Scale:	1 inch = 250 feet	Chart Number:	15000
Projection:	NAD 1983 StatePlane South Carolina FIPS 3800 Feet	Chart Title:	Georgetown Harbor Channel

**Georgetown Harbor Channel Survey**  
The information depicted on this map represents the results of surveys made on the dates indicated and can only be considered as indicating the general character of the bottom.

Concluded on: 15 SEP 2021  
Georgetown, South Carolina

SHEET REFERENCE NUMBER: C001  
SHEET 7 OF 13



U.S. Army Corps of Engineers  
Charleston District

**Production Notes:**  
 1. This chart is a preliminary chart and is subject to change without notice.  
 2. This chart is not to be used for navigation.  
 3. This chart is not to be used for navigation.  
 4. This chart is not to be used for navigation.  
 5. This chart is not to be used for navigation.  
 6. This chart is not to be used for navigation.  
 7. This chart is not to be used for navigation.  
 8. This chart is not to be used for navigation.  
 9. This chart is not to be used for navigation.  
 10. This chart is not to be used for navigation.

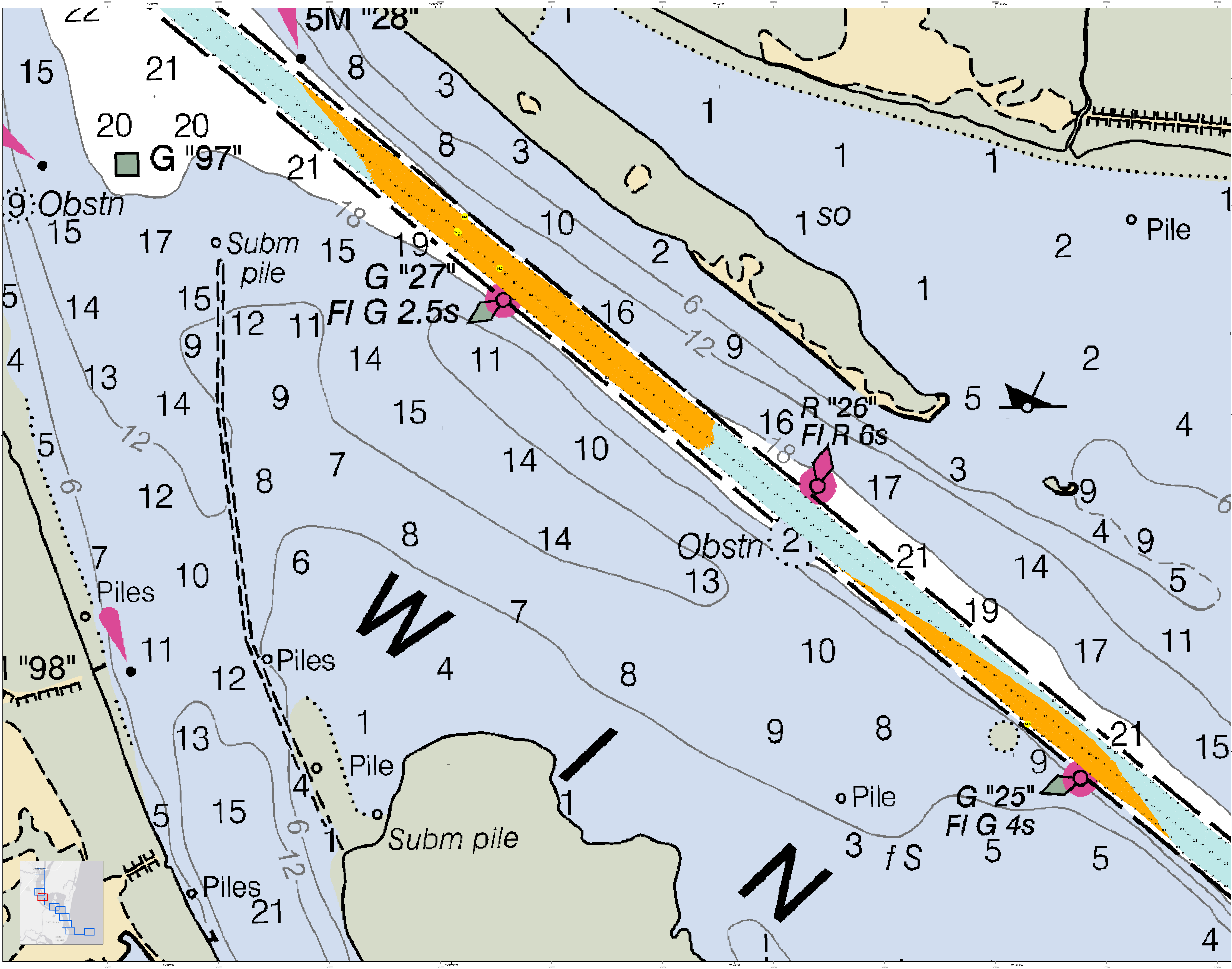
**Legend:**  
 Depth Contours: 1, 2, 3, 4, 5, 6, 7, 8, 9, 10, 11, 12, 13, 14, 15, 16, 17, 18, 19, 20, 21, 22, 23  
 Obstructions: Red symbols  
 Navigational Markers: Green and red symbols  
 Spoil Area: Yellow shaded area  
 Marsh: Green shaded area

**Metadata:**  
 Survey Date: 15 SEP 2021  
 Production Date: 20 SEP 2021  
 Project Reference Number: 15000  
 Survey Scale: 1:5000  
 Chart Scale: 1 inch = 250 feet  
 Projection: NAD 1983 StatePlane South Carolina FIPS 3800 Feet

**Georgetown Harbor Channel Survey**  
 The information depicted on this map represents the results of surveys made on the dates indicated and can only be considered as indicating the general character of the bottom and is not to be used for navigation.  
 Concluded on: 15 SEP 2021  
 Georgetown, South Carolina

**SHEET REFERENCE NUMBER**  
 C001  
 SHEET 8 OF 13





In accordance with the U.S. Army Corps of Engineers, Charleston District Office, Navigation Channel Survey for the Charleston Harbor Channel, this chart is a hydrographic chart. It is not a nautical chart. It is not intended to be used for navigation. It is intended to be used for engineering purposes only. It is not intended to be used for navigation. It is intended to be used for engineering purposes only. It is not intended to be used for navigation. It is intended to be used for engineering purposes only.

**Projection Note:**  
1. This chart is a hydrographic chart. It is not a nautical chart. It is not intended to be used for navigation. It is intended to be used for engineering purposes only. It is not intended to be used for navigation. It is intended to be used for engineering purposes only. It is not intended to be used for navigation. It is intended to be used for engineering purposes only.

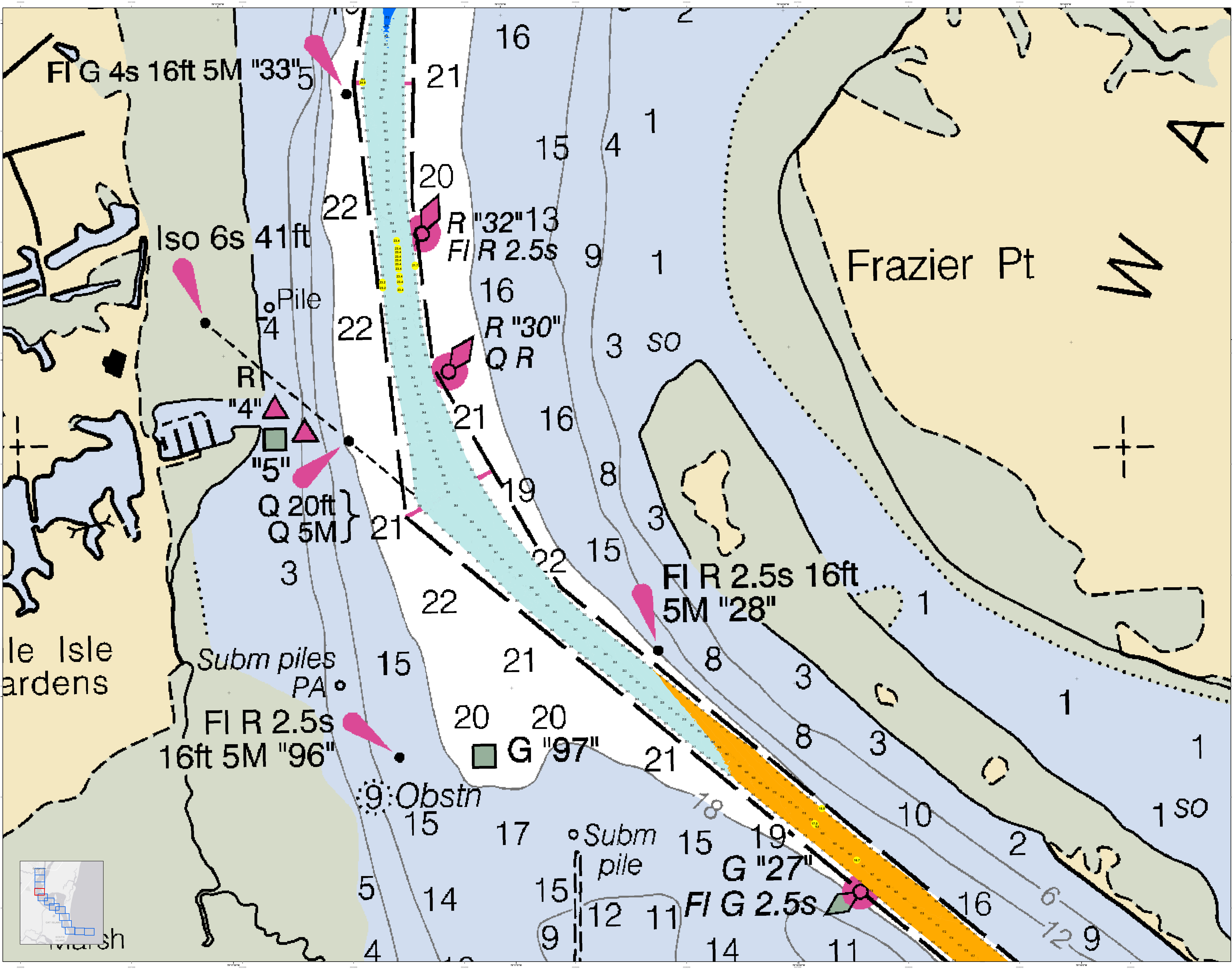
**Scale:**  
1 inch = 250 feet  
0 125 250 500 750

**Legend:**  
Obstruction  
Pile  
Submerged Pile  
Channel Boundary  
Depth Contour  
Soundings  
Obstruction  
Pile  
Submerged Pile  
Channel Boundary  
Depth Contour  
Soundings

**Legend:**  
Obstruction  
Pile  
Submerged Pile  
Channel Boundary  
Depth Contour  
Soundings  
Obstruction  
Pile  
Submerged Pile  
Channel Boundary  
Depth Contour  
Soundings

Designed By:	Hydro Software v3.82	Survey Date:	15 SEP 2021	Production Date:	20 SEP 2021
Reviewed By:	ABSOLUTE SCALE	Project Reference Number:	13000	Project Reference Number:	PC00010
Scale:	1 inch = 250 feet	Scale:	CONDITION	Scale:	CONDITION
Projection:	NAD 1983 StatePlane South Carolina FIPS 3800 Feet	Projection:	NAD 1983 StatePlane South Carolina FIPS 3800 Feet	Projection:	NAD 1983 StatePlane South Carolina FIPS 3800 Feet

**Georgetown Harbor Channel Survey**  
The information depicted on this map represents the results of surveys made on the dates indicated and can only be considered as indicating the general location of the objects shown. It is not intended to be used for navigation. It is intended to be used for engineering purposes only. It is not intended to be used for navigation. It is intended to be used for engineering purposes only. It is not intended to be used for navigation. It is intended to be used for engineering purposes only.



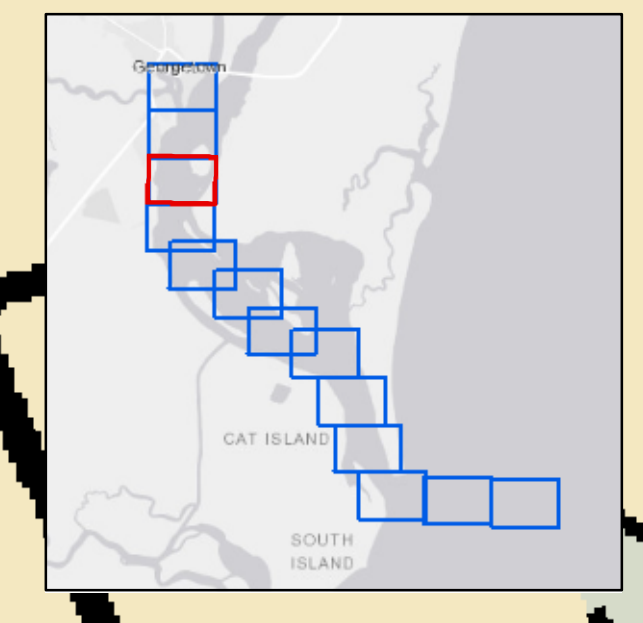
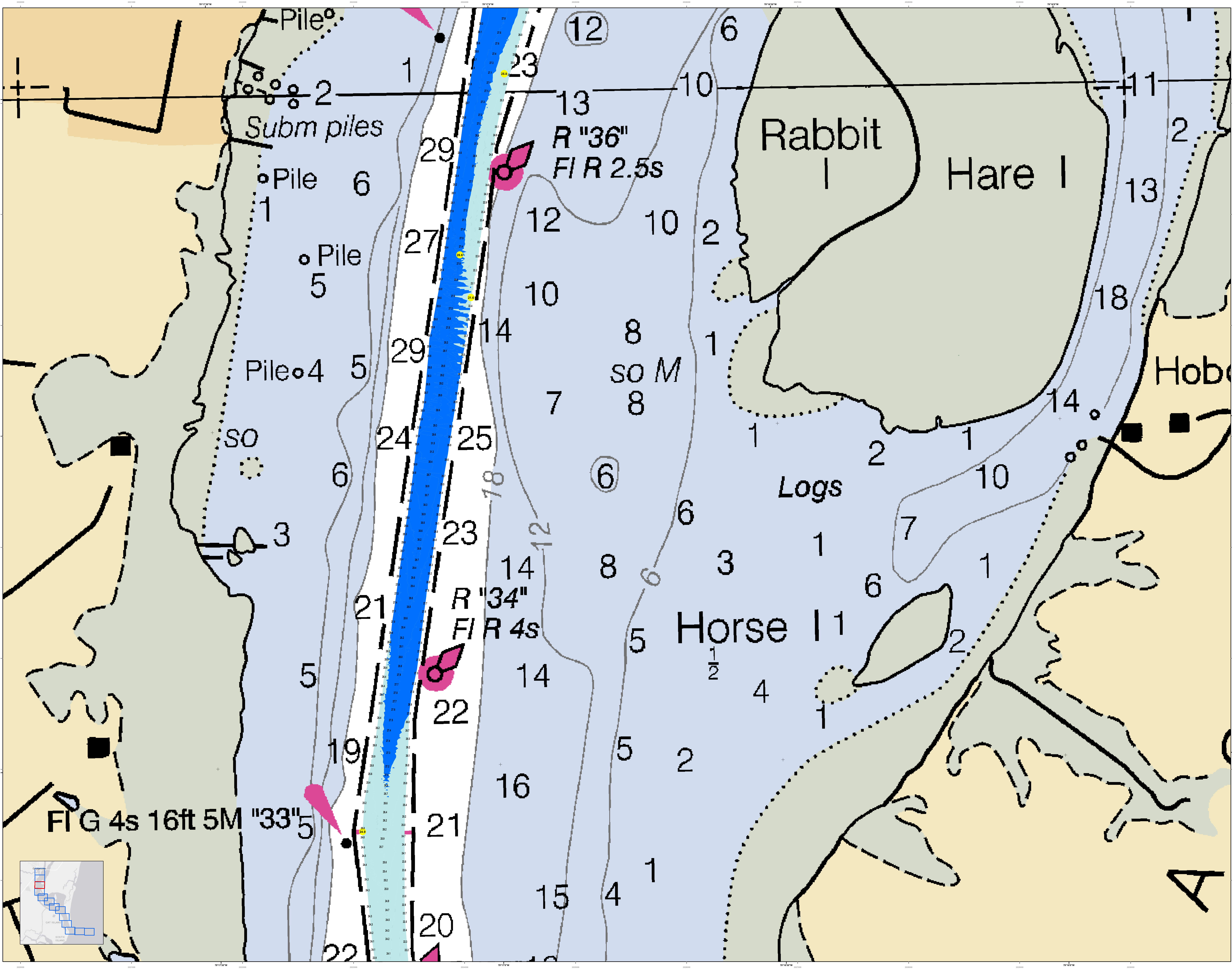
In its capacity as the U.S. Army Corps of Engineers, Charleston District Office, Navigation Section is unable to affirm, disavow, or deny the accuracy of the information depicted on this map representation. The information on this map is based on the latest available data and is subject to change without notice. The information on this map is for informational purposes only and should not be used for navigation. The information on this map is not to be used for navigation. The information on this map is not to be used for navigation.

**Proposed Channel**  
 1. This is the proposed channel.  
 2. This is the proposed channel.  
 3. This is the proposed channel.  
 4. This is the proposed channel.

**Legend**  
 Depth Soundings: 1. 10 to 15, 2. 16 to 20, 3. 21 to 25, 4. 26 to 30, 5. 31 to 35, 6. 36 to 40, 7. 41 to 45, 8. 46 to 50, 9. 51 to 55, 10. 56 to 60, 11. 61 to 65, 12. 66 to 70, 13. 71 to 75, 14. 76 to 80, 15. 81 to 85, 16. 86 to 90, 17. 91 to 95, 18. 96 to 100, 19. 101 to 105, 20. 106 to 110, 21. 111 to 115, 22. 116 to 120, 23. 121 to 125, 24. 126 to 130, 25. 131 to 135, 26. 136 to 140, 27. 141 to 145, 28. 146 to 150, 29. 151 to 155, 30. 156 to 160, 31. 161 to 165, 32. 166 to 170, 33. 171 to 175, 34. 176 to 180, 35. 181 to 185, 36. 186 to 190, 37. 191 to 195, 38. 196 to 200, 39. 201 to 205, 40. 206 to 210, 41. 211 to 215, 42. 216 to 220, 43. 221 to 225, 44. 226 to 230, 45. 231 to 235, 46. 236 to 240, 47. 241 to 245, 48. 246 to 250, 49. 251 to 255, 50. 256 to 260, 51. 261 to 265, 52. 266 to 270, 53. 271 to 275, 54. 276 to 280, 55. 281 to 285, 56. 286 to 290, 57. 291 to 295, 58. 296 to 300, 59. 301 to 305, 60. 306 to 310, 61. 311 to 315, 62. 316 to 320, 63. 321 to 325, 64. 326 to 330, 65. 331 to 335, 66. 336 to 340, 67. 341 to 345, 68. 346 to 350, 69. 351 to 355, 70. 356 to 360, 71. 361 to 365, 72. 366 to 370, 73. 371 to 375, 74. 376 to 380, 75. 381 to 385, 76. 386 to 390, 77. 391 to 395, 78. 396 to 400, 79. 401 to 405, 80. 406 to 410, 81. 411 to 415, 82. 416 to 420, 83. 421 to 425, 84. 426 to 430, 85. 431 to 435, 86. 436 to 440, 87. 441 to 445, 88. 446 to 450, 89. 451 to 455, 90. 456 to 460, 91. 461 to 465, 92. 466 to 470, 93. 471 to 475, 94. 476 to 480, 95. 481 to 485, 96. 486 to 490, 97. 491 to 495, 98. 496 to 500, 99. 501 to 505, 100. 506 to 510, 101. 511 to 515, 102. 516 to 520, 103. 521 to 525, 104. 526 to 530, 105. 531 to 535, 106. 536 to 540, 107. 541 to 545, 108. 546 to 550, 109. 551 to 555, 110. 556 to 560, 111. 561 to 565, 112. 566 to 570, 113. 571 to 575, 114. 576 to 580, 115. 581 to 585, 116. 586 to 590, 117. 591 to 595, 118. 596 to 600, 119. 601 to 605, 120. 606 to 610, 121. 611 to 615, 122. 616 to 620, 123. 621 to 625, 124. 626 to 630, 125. 631 to 635, 126. 636 to 640, 127. 641 to 645, 128. 646 to 650, 129. 651 to 655, 130. 656 to 660, 131. 661 to 665, 132. 666 to 670, 133. 671 to 675, 134. 676 to 680, 135. 681 to 685, 136. 686 to 690, 137. 691 to 695, 138. 696 to 700, 139. 701 to 705, 140. 706 to 710, 141. 711 to 715, 142. 716 to 720, 143. 721 to 725, 144. 726 to 730, 145. 731 to 735, 146. 736 to 740, 147. 741 to 745, 148. 746 to 750, 149. 751 to 755, 150. 756 to 760, 151. 761 to 765, 152. 766 to 770, 153. 771 to 775, 154. 776 to 780, 155. 781 to 785, 156. 786 to 790, 157. 791 to 795, 158. 796 to 800, 159. 801 to 805, 160. 806 to 810, 161. 811 to 815, 162. 816 to 820, 163. 821 to 825, 164. 826 to 830, 165. 831 to 835, 166. 836 to 840, 167. 841 to 845, 168. 846 to 850, 169. 851 to 855, 170. 856 to 860, 171. 861 to 865, 172. 866 to 870, 173. 871 to 875, 174. 876 to 880, 175. 881 to 885, 176. 886 to 890, 177. 891 to 895, 178. 896 to 900, 179. 901 to 905, 180. 906 to 910, 181. 911 to 915, 182. 916 to 920, 183. 921 to 925, 184. 926 to 930, 185. 931 to 935, 186. 936 to 940, 187. 941 to 945, 188. 946 to 950, 189. 951 to 955, 190. 956 to 960, 191. 961 to 965, 192. 966 to 970, 193. 971 to 975, 194. 976 to 980, 195. 981 to 985, 196. 986 to 990, 197. 991 to 995, 198. 996 to 1000.

**Legend**  
 Proposed Channel: 1. Cyan line, 2. Orange line, 3. Yellow line, 4. Green line.  
 Buoy: 1. Red triangle, 2. Green triangle, 3. Yellow triangle, 4. White triangle, 5. Black triangle, 6. Red circle, 7. Green circle, 8. Yellow circle, 9. White circle, 10. Black circle, 11. Red diamond, 12. Green diamond, 13. Yellow diamond, 14. White diamond, 15. Black diamond, 16. Red square, 17. Green square, 18. Yellow square, 19. White square, 20. Black square, 21. Red pentagon, 22. Green pentagon, 23. Yellow pentagon, 24. White pentagon, 25. Black pentagon, 26. Red hexagon, 27. Green hexagon, 28. Yellow hexagon, 29. White hexagon, 30. Black hexagon, 31. Red heptagon, 32. Green heptagon, 33. Yellow heptagon, 34. White heptagon, 35. Black heptagon, 36. Red octagon, 37. Green octagon, 38. Yellow octagon, 39. White octagon, 40. Black octagon, 41. Red nonagon, 42. Green nonagon, 43. Yellow nonagon, 44. White nonagon, 45. Black nonagon, 46. Red decagon, 47. Green decagon, 48. Yellow decagon, 49. White decagon, 50. Black decagon, 51. Red hendecagon, 52. Green hendecagon, 53. Yellow hendecagon, 54. White hendecagon, 55. Black hendecagon, 56. Red dodecagon, 57. Green dodecagon, 58. Yellow dodecagon, 59. White dodecagon, 60. Black dodecagon, 61. Red triskaidecagon, 62. Green triskaidecagon, 63. Yellow triskaidecagon, 64. White triskaidecagon, 65. Black triskaidecagon, 66. Red tetradecagon, 67. Green tetradecagon, 68. Yellow tetradecagon, 69. White tetradecagon, 70. Black tetradecagon, 71. Red pentadecagon, 72. Green pentadecagon, 73. Yellow pentadecagon, 74. White pentadecagon, 75. Black pentadecagon, 76. Red hexadecagon, 77. Green hexadecagon, 78. Yellow hexadecagon, 79. White hexadecagon, 80. Black hexadecagon, 81. Red heptadecagon, 82. Green heptadecagon, 83. Yellow heptadecagon, 84. White heptadecagon, 85. Black heptadecagon, 86. Red octadecagon, 87. Green octadecagon, 88. Yellow octadecagon, 89. White octadecagon, 90. Black octadecagon, 91. Red enneadecagon, 92. Green enneadecagon, 93. Yellow enneadecagon, 94. White enneadecagon, 95. Black enneadecagon, 96. Redicosadecagon, 97. Green icosadecagon, 98. Yellow icosadecagon, 99. White icosadecagon, 100. Black icosadecagon.

**Legend**  
 Obstruction: 1. Red circle with '9', 2. Green circle with '9', 3. Yellow circle with '9', 4. White circle with '9', 5. Black circle with '9', 6. Red square with '9', 7. Green square with '9', 8. Yellow square with '9', 9. White square with '9', 10. Black square with '9', 11. Red triangle with '9', 12. Green triangle with '9', 13. Yellow triangle with '9', 14. White triangle with '9', 15. Black triangle with '9', 16. Red diamond with '9', 17. Green diamond with '9', 18. Yellow diamond with '9', 19. White diamond with '9', 20. Black diamond with '9', 21. Red pentagon with '9', 22. Green pentagon with '9', 23. Yellow pentagon with '9', 24. White pentagon with '9', 25. Black pentagon with '9', 26. Red hexagon with '9', 27. Green hexagon with '9', 28. Yellow hexagon with '9', 29. White hexagon with '9', 30. Black hexagon with '9', 31. Red heptagon with '9', 32. Green heptagon with '9', 33. Yellow heptagon with '9', 34. White heptagon with '9', 35. Black heptagon with '9', 36. Red octagon with '9', 37. Green octagon with '9', 38. Yellow octagon with '9', 39. White octagon with '9', 40. Black octagon with '9', 41. Red nonagon with '9', 42. Green nonagon with '9', 43. Yellow nonagon with '9', 44. White nonagon with '9', 45. Black nonagon with '9', 46. Red decagon with '9', 47. Green decagon with '9', 48. Yellow decagon with '9', 49. White decagon with '9', 50. Black decagon with '9', 51. Red hendecagon with '9', 52. Green hendecagon with '9', 53. Yellow hendecagon with '9', 54. White hendecagon with '9', 55. Black hendecagon with '9', 56. Red dodecagon with '9', 57. Green dodecagon with '9', 58. Yellow dodecagon with '9', 59. White dodecagon with '9', 60. Black dodecagon with '9', 61. Red triskaidecagon with '9', 62. Green triskaidecagon with '9', 63. Yellow triskaidecagon with '9', 64. White triskaidecagon with '9', 65. Black triskaidecagon with '9', 66. Red tetradecagon with '9', 67. Green tetradecagon with '9', 68. Yellow tetradecagon with '9', 69. White tetradecagon with '9', 70. Black tetradecagon with '9', 71. Red pentadecagon with '9', 72. Green pentadecagon with '9', 73. Yellow pentadecagon with '9', 74. White pentadecagon with '9', 75. Black pentadecagon with '9', 76. Red hexadecagon with '9', 77. Green hexadecagon with '9', 78. Yellow hexadecagon with '9', 79. White hexadecagon with '9', 80. Black hexadecagon with '9', 81. Red heptadecagon with '9', 82. Green heptadecagon with '9', 83. Yellow heptadecagon with '9', 84. White heptadecagon with '9', 85. Black heptadecagon with '9', 86. Red octadecagon with '9', 87. Green octadecagon with '9', 88. Yellow octadecagon with '9', 89. White octadecagon with '9', 90. Black octadecagon with '9', 91. Red enneadecagon with '9', 92. Green enneadecagon with '9', 93. Yellow enneadecagon with '9', 94. White enneadecagon with '9', 95. Black enneadecagon with '9', 96. Redicosadecagon with '9', 97. Green icosadecagon with '9', 98. Yellow icosadecagon with '9', 99. White icosadecagon with '9', 100. Black icosadecagon with '9', 101. Red tetradecagon with '9', 102. Green tetradecagon with '9', 103. Yellow tetradecagon with '9', 104. White tetradecagon with '9', 105. Black tetradecagon with '9', 106. Red pentadecagon with '9', 107. Green pentadecagon with '9', 108. Yellow pentadecagon with '9', 109. White pentadecagon with '9', 110. Black pentadecagon with '9', 111. Red hexadecagon with '9', 112. Green hexadecagon with '9', 113. Yellow hexadecagon with '9', 114. White hexadecagon with '9', 115. Black hexadecagon with '9', 116. Red heptadecagon with '9', 117. Green heptadecagon with '9', 118. Yellow heptadecagon with '9', 119. White heptadecagon with '9', 120. Black heptadecagon with '9', 121. Red octadecagon with '9', 122. Green octadecagon with '9', 123. Yellow octadecagon with '9', 124. White octadecagon with '9', 125. Black octadecagon with '9', 126. Red enneadecagon with '9', 127. Green enneadecagon with '9', 128. Yellow enneadecagon with '9', 129. White enneadecagon with '9', 130. Black enneadecagon with '9', 131. Redicosadecagon with '9', 132. Green icosadecagon with '9', 133. Yellow icosadecagon with '9', 134. White icosadecagon with '9', 135. Black icosadecagon with '9', 136. Red tetradecagon with '9', 137. Green tetradecagon with '9', 138. Yellow tetradecagon with '9', 139. White tetradecagon with '9', 140. Black tetradecagon with '9', 141. Red pentadecagon with '9', 142. Green pentadecagon with '9', 143. Yellow pentadecagon with '9', 144. White pentadecagon with '9', 145. Black pentadecagon with '9', 146. Red hexadecagon with '9', 147. Green hexadecagon with '9', 148. Yellow hexadecagon with '9', 149. White hexadecagon with '9', 150. Black hexadecagon with '9', 151. Red heptadecagon with '9', 152. Green heptadecagon with '9', 153. Yellow heptadecagon with '9', 154. White heptadecagon with '9', 155. Black heptadecagon with '9', 156. Red octadecagon with '9', 157. Green octadecagon with '9', 158. Yellow octadecagon with '9', 159. White octadecagon with '9', 160. Black octadecagon with '9', 161. Red enneadecagon with '9', 162. Green enneadecagon with '9', 163. Yellow enneadecagon with '9', 164. White enneadecagon with '9', 165. Black enneadecagon with '9', 166. Redicosadecagon with '9', 167. Green icosadecagon with '9', 168. Yellow icosadecagon with '9', 169. White icosadecagon with '9', 170. Black icosadecagon with '9', 171. Red tetradecagon with '9', 172. Green tetradecagon with '9', 173. Yellow tetradecagon with '9', 174. White tetradecagon with '9', 175. Black tetradecagon with '9', 176. Red pentadecagon with '9', 177. Green pentadecagon with '9', 178. Yellow pentadecagon with '9', 179. White pentadecagon with '9', 180. Black pentadecagon with '9', 181. Red hexadecagon with '9', 182. Green hexadecagon with '9', 183. Yellow hexadecagon with '9', 184. White hexadecagon with '9', 185. Black hexadecagon with '9', 186. Red heptadecagon with '9', 187. Green heptadecagon with '9', 188. Yellow heptadecagon with '9', 189. White heptadecagon with '9', 190. Black heptadecagon with '9', 191. Red octadecagon with '9', 192. Green octadecagon with '9', 193. Yellow octadecagon with '9', 194. White octadecagon with '9', 195. Black octadecagon with '9', 196. Red enneadecagon with '9', 197. Green enneadecagon with '9', 198. Yellow enneadecagon with '9', 199. White enneadecagon with '9', 200. Black enneadecagon with '9', 201. Redicosadecagon with '9', 202. Green icosadecagon with '9', 203. Yellow icosadecagon with '9', 204. White icosadecagon with '9', 205. Black icosadecagon with '9', 206. Red tetradecagon with '9', 207. Green tetradecagon with '9', 208. Yellow tetradecagon with '9', 209. White tetradecagon with '9', 210. Black tetradecagon with '9', 211. Red pentadecagon with '9', 212. Green pentadecagon with '9', 213. Yellow pentadecagon with '9', 214. White pentadecagon with '9', 215. Black pentadecagon with '9', 216. Red hexadecagon with '9', 217. Green hexadecagon with '9', 218. Yellow hexadecagon with '9', 219. White hexadecagon with '9', 220. Black hexadecagon with '9', 221. Red heptadecagon with '9', 222. Green heptadecagon with '9', 223. Yellow heptadecagon with '9', 224. White heptadecagon with '9', 225. Black heptadecagon with '9', 226. Red octadecagon with '9', 227. Green octadecagon with '9', 228. Yellow octadecagon with '9', 229. White octadecagon with '9', 230. Black octadecagon with '9', 231. Red enneadecagon with '9', 232. Green enneadecagon with '9', 233. Yellow enneadecagon with '9', 234. White enneadecagon with '9', 235. Black enneadecagon with '9', 236. Redicosadecagon with '9', 237. Green icosadecagon with '9', 238. Yellow icosadecagon with '9', 239. White icosadecagon with '9', 240. Black icosadecagon with '9', 241. Red tetradecagon with '9', 242. Green tetradecagon with '9', 243. Yellow tetradecagon with '9', 244. White tetradecagon with '9', 245. Black tetradecagon with '9', 246. Red pentadecagon with '9', 247. Green pentadecagon with '9', 248. Yellow pentadecagon with '9', 249. White pentadecagon with '9', 250. Black pentadecagon with '9', 251. Red hexadecagon with '9', 252. Green hexadecagon with '9', 253. Yellow hexadecagon with '9', 254. White hexadecagon with '9', 255. Black hexadecagon with '9', 256. Red heptadecagon with '9', 257. Green heptadecagon with '9', 258. Yellow heptadecagon with '9', 259. White heptadecagon with '9', 260. Black heptadecagon with '9', 261. Red octadecagon with '9', 262. Green octadecagon with '9', 263. Yellow octadecagon with '9', 264. White octadecagon with '9', 265. Black octadecagon with '9', 266. Red enneadecagon with '9', 267. Green enneadecagon with '9', 268. Yellow enneadecagon with '9', 269. White enneadecagon with '9', 270. Black enneadecagon with '9', 271. Redicosadecagon with '9', 272. Green icosadecagon with '9', 273. Yellow icosadecagon with '9', 274. White icosadecagon with '9', 275. Black icosadecagon with '9', 276. Red tetradecagon with '9', 277. Green tetradecagon with '9', 278. Yellow tetradecagon with '9', 279. White tetradecagon with '9', 280. Black tetradecagon with '9', 281. Red pentadecagon with '9', 282. Green pentadecagon with '9', 283. Yellow pentadecagon with '9', 284. White pentadecagon with '9', 285. Black pentadecagon with '9', 286. Red hexadecagon with '9', 287. Green hexadecagon with '9', 288. Yellow hexadecagon with '9', 289. White hexadecagon with '9', 290. Black hexadecagon with '9', 291. Red heptadecagon with '9', 292. Green heptadecagon with '9', 293. Yellow heptadecagon with '9', 294. White heptadecagon with '9', 295. Black heptadecagon with '9', 296. Red octadecagon with '9', 297. Green octadecagon with '9', 298. Yellow octadecagon with '9', 299. White octadecagon with '9', 300. Black octadecagon with '9', 301. Red enneadecagon with '9', 302. Green enneadecagon with '9', 303. Yellow enneadecagon with '9', 304. White enneadecagon with '9', 305. Black enneadecagon with '9', 306. Redicosadecagon with '9', 307. Green icosadecagon with '9', 308. Yellow icosadecagon with '9', 309. White icosadecagon with '9', 310. Black icosadecagon with '9', 311. Red tetradecagon with '9', 312. Green tetradecagon with '9', 313. Yellow tetradecagon with '9', 314. White tetradecagon with '9', 315. Black tetradecagon with '9', 316. Red pentadecagon with '9', 317. Green pentadecagon with '9', 318. Yellow pentadecagon with '9', 319. White pentadecagon with '9', 320. Black pentadecagon with '9', 321. Red hexadecagon with '9', 322. Green hexadecagon with '9', 323. Yellow hexadecagon with '9', 324. White hexadecagon with '9', 325. Black hexadecagon with '9', 326. Red heptadecagon with '9', 327. Green heptadecagon with '9', 328. Yellow heptadecagon with '9', 329. White heptadecagon with '9', 330. Black heptadecagon with '9', 331. Red octadecagon with '9', 332. Green octadecagon with '9', 333. Yellow octadecagon with '9', 334. White octadecagon with '9', 335. Black octadecagon with '9', 336. Red enneadecagon with '9', 337. Green enneadecagon with '9', 338. Yellow enneadecagon with '9', 339. White enneadecagon with '9', 340. Black enneadecagon with '9', 341. Redicosadecagon with '9', 342. Green icosadecagon with '9', 343. Yellow icosadecagon with '9', 344. White icosadecagon with '9', 345. Black icosadecagon with '9', 346. Red tetradecagon with '9', 347. Green tetradecagon with '9', 348. Yellow tetradecagon with '9', 349. White tetradecagon with '9', 350. Black tetradecagon with '9', 351. Red pentadecagon with '9', 352. Green pentadecagon with '9', 353. Yellow pentadecagon with '9', 354. White pentadecagon with '9', 355. Black pentadecagon with '9', 356. Red hexadecagon with '9', 357. Green hexadecagon with '9', 358. Yellow hexadecagon with '9', 359. White hexadecagon with '9', 360. Black hexadecagon with '9', 361. Red heptadecagon with '9', 362. Green heptadecagon with '9', 363. Yellow heptadecagon with '9', 364. White heptadecagon with '9', 365. Black heptadecagon with '9', 366. Red octadecagon with '9', 367. Green octadecagon with '9', 368. Yellow octadecagon with '9', 369. White octadecagon with '9', 370. Black octadecagon with '9', 371. Red enneadecagon with '9', 372. Green enneadecagon with '9', 373. Yellow enneadecagon with '9', 374. White enneadecagon with '9', 375. Black enneadecagon with '9', 376. Redicosadecagon with '9', 377. Green icosadecagon with '9', 378. Yellow icosadecagon with '9', 379. White icosadecagon with '9', 380. Black icosadecagon with '9', 381. Red tetradecagon with '9', 382. Green tetradecagon with '9', 383. Yellow tetradecagon with '9', 384. White tetradecagon with '9', 385. Black tetradecagon with '9', 386. Red pentadecagon with '9', 387. Green pentadecagon with '9', 388. Yellow pentadecagon with '9', 389. White pentadecagon with '9', 390. Black pentadecagon with '9', 391. Red hexadecagon with '9', 392. Green hexadecagon with '9', 393. Yellow hexadecagon with '9', 394. White hexadecagon with '9', 395. Black hexadecagon with '9', 396. Red heptadecagon with '9', 397. Green heptadecagon with '9', 398. Yellow heptadecagon with '9', 399. White heptadecagon with '9', 400. Black heptadecagon with '9', 401. Red octadecagon with '9', 402. Green octadecagon with '9', 403. Yellow octadecagon with '9', 404. White octadecagon with '9', 405. Black octadecagon with '9', 406. Red enneadecagon with '9', 407. Green enneadecagon with '9', 408. Yellow enneadecagon with '9', 409. White enneadecagon with '9', 410. Black enneadecagon with '9', 411. Redicosadecagon with '9', 412. Green icosadecagon with '9', 413. Yellow icosadecagon with '9', 414. White icosadecagon with '9', 415. Black icosadecagon with '9', 416. Red tetradecagon with '9', 417. Green tetradecagon with '9', 418. Yellow tetradecagon with '9', 419. White tetradecagon with '9', 420. Black tetradecagon with '9', 421. Red pentadecagon with '9', 422. Green pentadecagon with '9', 423. Yellow pentadecagon with '9', 424. White pentadecagon with '9', 425. Black pentadecagon with '9', 426. Red hexadecagon with '9', 427. Green hexadecagon with '9', 428. Yellow hexadecagon with '9', 429. White hexadecagon with '9', 430. Black hexadecagon with '9', 431. Red heptadecagon with '9', 432. Green heptadecagon with '9', 433. Yellow heptadecagon with '9', 434. White heptadecagon with '9', 435. Black heptadecagon with '9', 436. Red octadecagon with '9', 437. Green octadecagon with '9', 438. Yellow octadecagon with '9', 439. White octadecagon with '9', 440. Black octadecagon with '9', 441. Red enneadecagon with '9', 442. Green enneadecagon with '9', 443. Yellow enneadecagon with '9', 444. White enneadecagon with '9', 445. Black enneadecagon with '9', 446. Redicosadecagon with '9', 447. Green icosadecagon with '9', 448. Yellow icosadecagon with '9', 449. White icosadecagon with '9', 450. Black icosadecagon with '9', 451. Red tetradecagon with '9', 452. Green tetradecagon with '9', 453. Yellow tetradecagon with '9', 454. White tetradecagon with '9', 455. Black tetradecagon with '9', 456. Red pentadecagon with '9', 457. Green pentadecagon with '9', 458. Yellow pentadecagon with '9', 459. White pentadecagon with '9', 460. Black pentadecagon with '9', 461. Red hexadecagon with '9', 462. Green hexadecagon with '9', 463. Yellow hexadecagon with '9', 464. White hexadecagon with '9', 465. Black hexadecagon with '9', 466. Red heptadecagon with '9', 467. Green heptadecagon with '9', 468. Yellow heptadecagon with '9', 469. White heptadecagon with '9', 470. Black heptadecagon with '9', 471. Red octadecagon with '9', 472. Green octadecagon with '9', 473. Yellow octadecagon with '9', 474. White octadecagon with '9', 475. Black octadecagon with '9', 476. Red enneadecagon with '9', 477. Green enneadecagon with '9', 478. Yellow enneadecagon with '9', 479. White enneadecagon with '9', 480. Black enneadecagon with '9', 481. Redicosadecagon with '9', 482. Green icosadecagon with '9', 483. Yellow icosadecagon with '9', 484. White icosadecagon with '9', 485. Black icosadecagon with '9', 486. Red tetradecagon with '9', 487. Green tetradecagon with '9', 488. Yellow tetradecagon with '9', 489. White tetradecagon with '9', 490. Black tetradecagon with '9', 491. Red pentadecagon with '9', 492. Green pentadecagon with '9', 493. Yellow pentadecagon with '9', 494. White pentadecagon with '9', 495. Black pentadecagon with '9', 496. Red hexadecagon with '9', 497. Green hexadecagon with '9', 498. Yellow hexadecagon with '9', 499. White hexadecagon with '9', 500. Black hexadecagon with '9', 501. Red heptadecagon with '9', 502. Green heptadecagon with '9', 503. Yellow heptadecagon with '9', 504. White heptadecagon with '9', 505. Black heptadecagon with '9', 506. Red octadecagon with '9', 507. Green octadecagon with '9', 508. Yellow octadecagon with '9', 509. White octadecagon with '9', 510. Black octadecagon with '9', 511. Red enneadecagon with '9', 512. Green enneadecagon with '9', 513. Yellow enneadecagon with '9', 514. White enneadecagon with '9', 515. Black enneadecagon with '9', 516. Redicosadecagon with '9', 517. Green icosadecagon with '9', 518. Yellow icosadecagon with '9', 519. White icosadecagon with '9', 520. Black icosadecagon with '9', 521. Red tetradecagon with '9', 522. Green tetradecagon with '9', 523. Yellow tetradecagon with '9', 524. White tetradecagon with '9', 525. Black tetradecagon with '9', 526. Red pentadecagon with '9', 527. Green pentadecagon with '9', 528. Yellow pentadecagon with '9', 529. White pentadecagon with '9', 530. Black pentadecagon with '9', 531. Red hexadecagon with '9', 532. Green hexadecagon with '9', 533. Yellow hexadecagon with '9', 534. White hexadecagon with '9', 535. Black hexadecagon with '9', 536. Red heptadecagon with '9', 537. Green heptadecagon with '9', 538. Yellow heptadecagon with '9', 539. White heptadecagon with '9', 540. Black heptadecagon with '9', 541. Red octadecagon with '9', 542. Green octadecagon with '9', 543. Yellow octadecagon with '9', 544. White octadecagon with '9', 545. Black octadecagon with '9', 546. Red enneadecagon with '9', 547. Green enneadecagon with '9', 548. Yellow enneadecagon with '9', 549. White enneadecagon with '9', 550. Black enneadecagon with '9', 551. Redicosadecagon with '9', 552. Green icosadecagon with '9', 553. Yellow icosadecagon with '9', 554. White icosadecagon with '9', 555. Black icosadecagon with '9', 556. Red tetradecagon with '9', 557. Green tetradecagon with '9', 558. Yellow tetradecagon with '9', 559. White tetradecagon with '9', 560. Black tetradecagon with '9', 561. Red pentadecagon with '9', 562. Green pentadecagon with '9', 563. Yellow pentadecagon with '9', 564. White pentadecagon with '9', 565. Black pentadecagon with '9', 566. Red hexadecagon with '9', 567. Green hexadecagon with '9', 568. Yellow hexadecagon with '9', 569. White hexadecagon with '9', 570. Black hexadecagon with '9', 571. Red heptadecagon with '9', 572. Green heptadecagon with '9', 573. Yellow heptadecagon with '



**U.S. Army Corps of Engineers**  
Charleston District

**Georgetown Harbor Channel Survey**  
The information depicted on this map represents the results of surveys made on the dates indicated and can only be considered as indicating the general character of the bottom. It is not intended to be used for navigation. Concluded on: 15 SEP 2021  
Georgetown, South Carolina

**Legend**

- Soundings:** 1 to 20
- Depth:** 1 to 20
- Obstructions:** Obstruction
- Other:** Other

**Scale:** 1 inch = 250 feet

**Projection:** NAD 1983 StatePlane South Carolina FIPS 3800 Feet

**Produced By:** J. H. ...

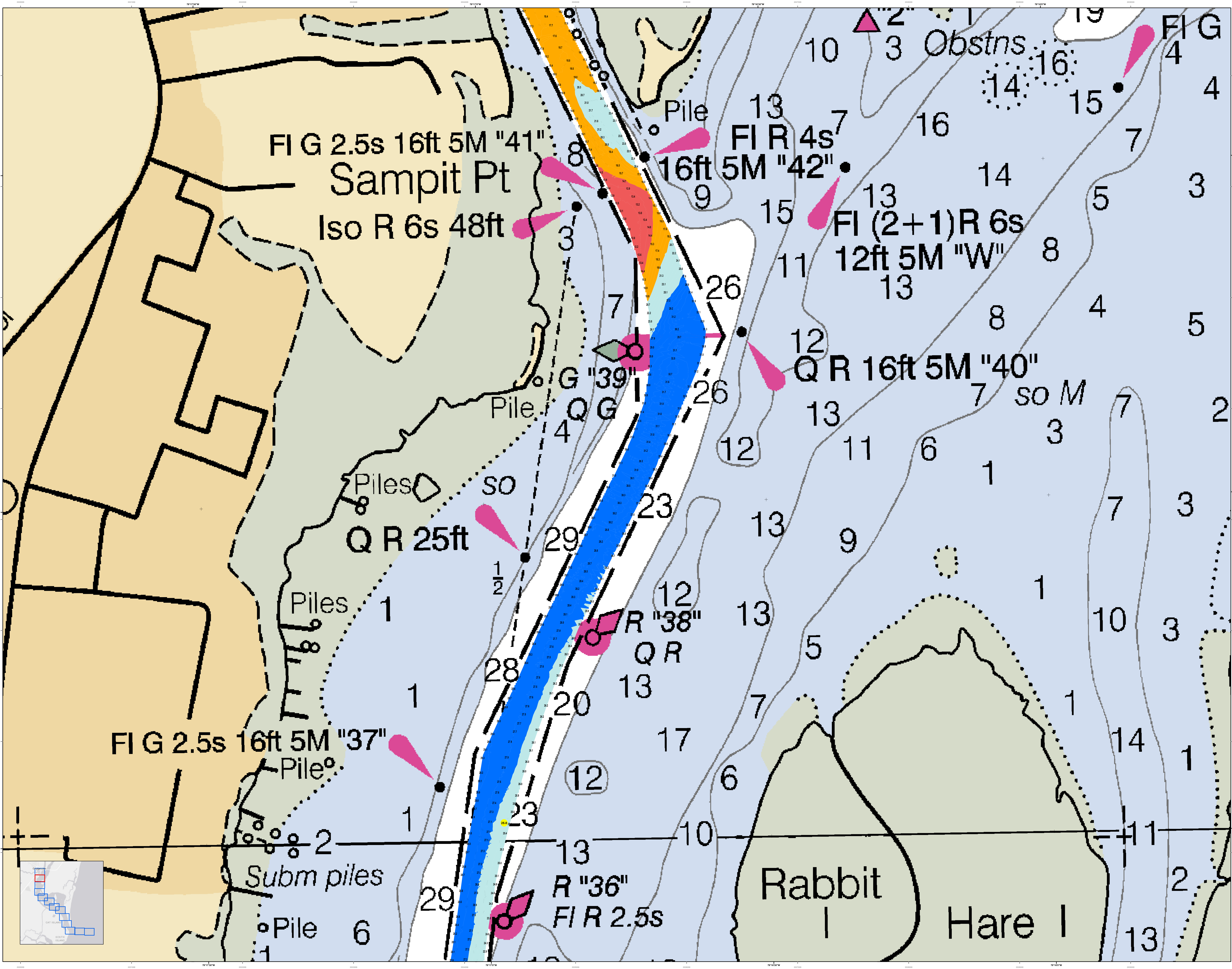
**Reviewed By:** J. H. ...

**Scale:** 1 inch = 250 feet

**Projection:** NAD 1983 StatePlane South Carolina FIPS 3800 Feet

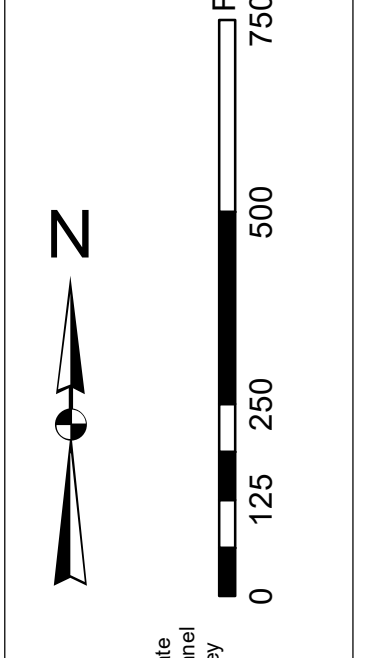
**Sheet Reference Number:** C001

**Sheet 11 of 13**

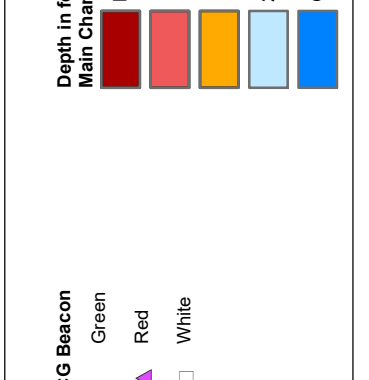


In accordance with the U.S. Army Corps of Engineers, Charleston District Office, Navigation Aids to Vessels for Vessels, the information depicted on this map represents the results of surveys made on the dates indicated and can only be considered as indicating the general location of the aid. It is not intended to be used for navigation. The information depicted on this map represents the results of surveys made on the dates indicated and can only be considered as indicating the general location of the aid. It is not intended to be used for navigation. The information depicted on this map represents the results of surveys made on the dates indicated and can only be considered as indicating the general location of the aid. It is not intended to be used for navigation.

**Production Notes:**  
1. This is a preliminary chart.  
2. The information depicted on this map represents the results of surveys made on the dates indicated and can only be considered as indicating the general location of the aid. It is not intended to be used for navigation.  
3. Obstructions are shown as triangles with numbers inside.  
4. The information depicted on this map represents the results of surveys made on the dates indicated and can only be considered as indicating the general location of the aid. It is not intended to be used for navigation.



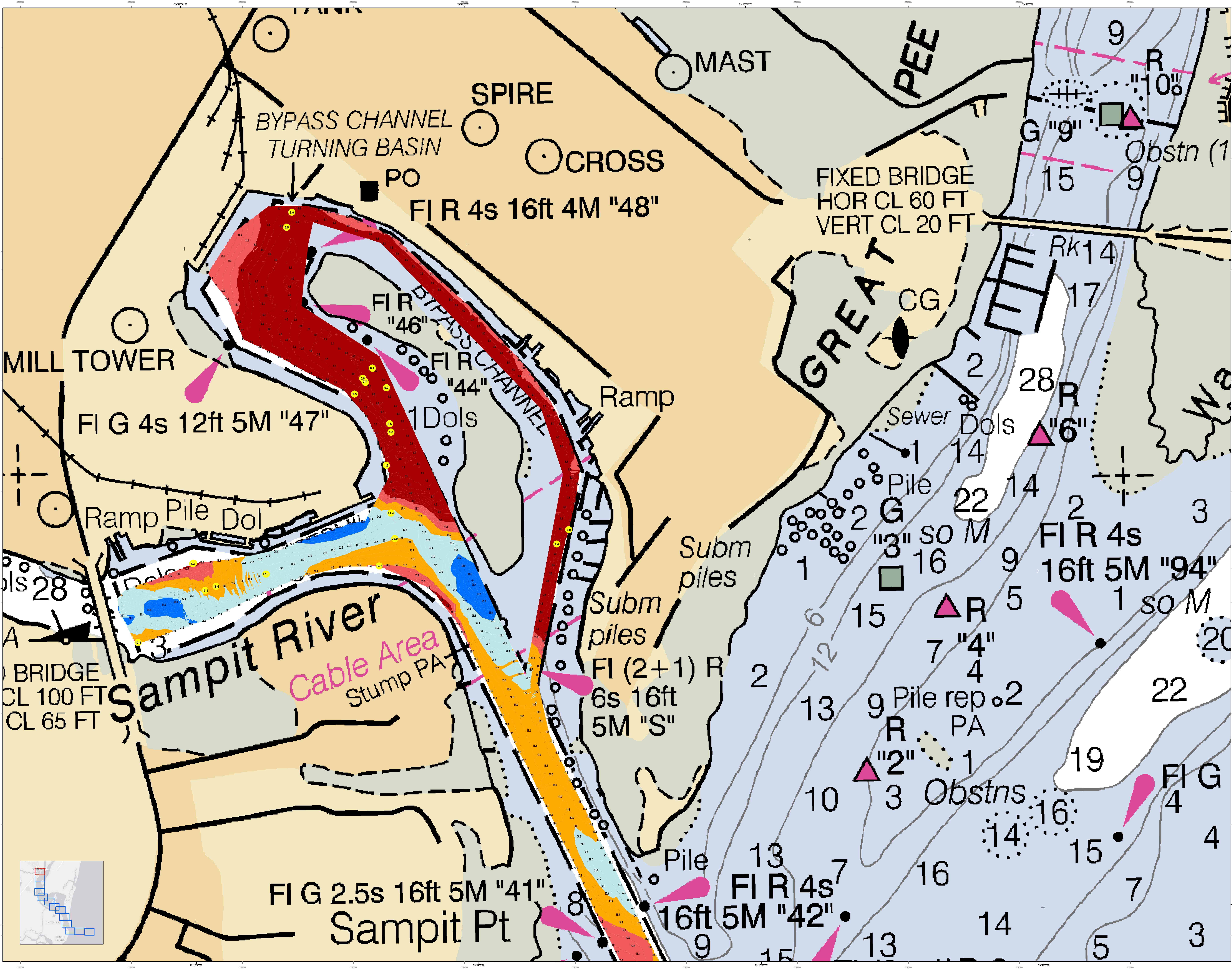
**System Charted Note:**  
1. This is a preliminary chart.  
2. The information depicted on this map represents the results of surveys made on the dates indicated and can only be considered as indicating the general location of the aid. It is not intended to be used for navigation.  
3. Obstructions are shown as triangles with numbers inside.  
4. The information depicted on this map represents the results of surveys made on the dates indicated and can only be considered as indicating the general location of the aid. It is not intended to be used for navigation.



**Legend:**  
Obstructions: Triangle with number  
Piles: Circle  
Subm Piles: Circle with cross  
Depth Contours: Color-coded by depth range

Designed By: jehydro	Software: v3.82	Survey Date: 15 SEP 2021	Production Date: 20 SEP 2021
Reviewed By: CHARLESTON DISTRICT	Scale: 1" = 250 Feet	Project Reference Number: 150300	Sheet Reference Number: 0001
Checked By: CHARLESTON DISTRICT	Scale: 1" = 250 Feet	Survey Station: CONDITION	Sheet Reference Number: 0001
Project: MAD 1893 StatePlane South Carolina FIPS 3800 Feet	Projection: NAD 1883 StatePlane South Carolina FIPS 3800 Feet		

**Georgetown Harbor Channel Survey**  
The information depicted on this map represents the results of surveys made on the dates indicated and can only be considered as indicating the general location of the aid. It is not intended to be used for navigation.  
Concluded on: 15 SEP 2021  
Georgetown, South Carolina



U.S. Army Corps of Engineers  
Charleston District

**Georgetown Harbor Channel Survey**  
The information depicted on this map represents the results of surveys made on the dates indicated and can only be considered as indicating the general character of the bottom. It is not to be used for navigation. Concluded on: 15 SEP 2021  
Georgetown, South Carolina

**Legend**

- Water Depth: 0 to 10, 10 to 20, 20 to 30, 30 to 40, 40 to 50, 50 to 60, 60 to 70, 70 to 80, 80 to 90, 90 to 100, 100 to 110, 110 to 120, 120 to 130, 130 to 140, 140 to 150, 150 to 160, 160 to 170, 170 to 180, 180 to 190, 190 to 200, 200 to 210, 210 to 220, 220 to 230, 230 to 240, 240 to 250, 250 to 260, 260 to 270, 270 to 280, 280 to 290, 290 to 300, 300 to 310, 310 to 320, 320 to 330, 330 to 340, 340 to 350, 350 to 360, 360 to 370, 370 to 380, 380 to 390, 390 to 400, 400 to 410, 410 to 420, 420 to 430, 430 to 440, 440 to 450, 450 to 460, 460 to 470, 470 to 480, 480 to 490, 490 to 500, 500 to 510, 510 to 520, 520 to 530, 530 to 540, 540 to 550, 550 to 560, 560 to 570, 570 to 580, 580 to 590, 590 to 600, 600 to 610, 610 to 620, 620 to 630, 630 to 640, 640 to 650, 650 to 660, 660 to 670, 670 to 680, 680 to 690, 690 to 700, 700 to 710, 710 to 720, 720 to 730, 730 to 740, 740 to 750, 750 to 760, 760 to 770, 770 to 780, 780 to 790, 790 to 800, 800 to 810, 810 to 820, 820 to 830, 830 to 840, 840 to 850, 850 to 860, 860 to 870, 870 to 880, 880 to 890, 890 to 900, 900 to 910, 910 to 920, 920 to 930, 930 to 940, 940 to 950, 950 to 960, 960 to 970, 970 to 980, 980 to 990, 990 to 1000
- Obstns: Obstacle
- Subm piles: Submerged Pile
- Pile: Pile
- Pile rep: Pile Replacement
- Obstns PA: Obstacle Protection Area
- Stump PA: Stump Protection Area
- Other: Other

**Scale**  
1 inch = 250 feet

**North Arrow**

**Production Date:** 15 SEP 2021  
**Survey Date:** 15 SEP 2021  
**Project Reference Number:** 120 SEP 2021  
**Project Name:** GEORGETOWN HARBOR CHANNEL SURVEY  
**Scale:** 1:25,000  
**Projection:** NAD 1983 StatePlane South Carolina FIPS 3800 Feet  
**UTM Zone:** 18Q UTM  
**UTM Easting:** 683,328,800  
**UTM Northing:** 4,123,123,123

**Sheet Reference Number:** C001  
**Sheet 13 of 13**

