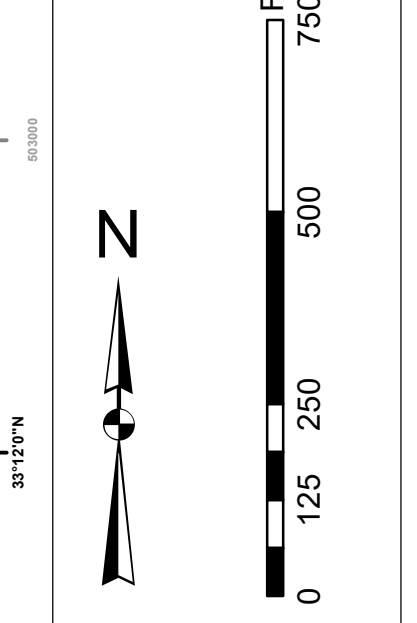


In its capacity as the U.S. Army Corps of Engineers, Charleston District Office, Special Data Branch has made this chart, including the information on this chart, available to the public. This information is provided for informational purposes only and is not intended to be used for navigation. The data on this chart were derived from the best available information and are not guaranteed to be accurate. The user assumes all responsibility for the use of this information. No liability is assumed for any errors or omissions. This information is provided as a service to the public and is not intended to be used for navigation. No liability is assumed for any errors or omissions. This information is provided as a service to the public and is not intended to be used for navigation.

**Production Note:**  
1. This chart is a reproduction of the original chart.  
2. The original chart was published in 1983.  
3. Changes are indicated by the date of the original chart.  
4. The original chart was published in 1983.  
5. Changes are indicated by the date of the original chart.



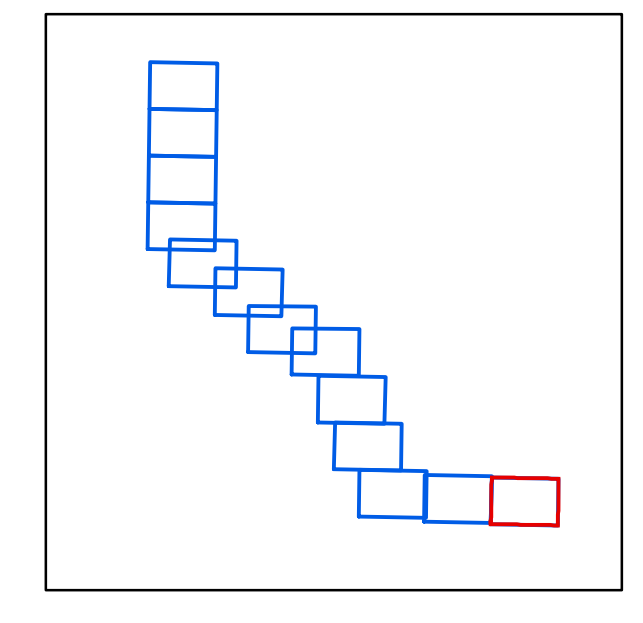
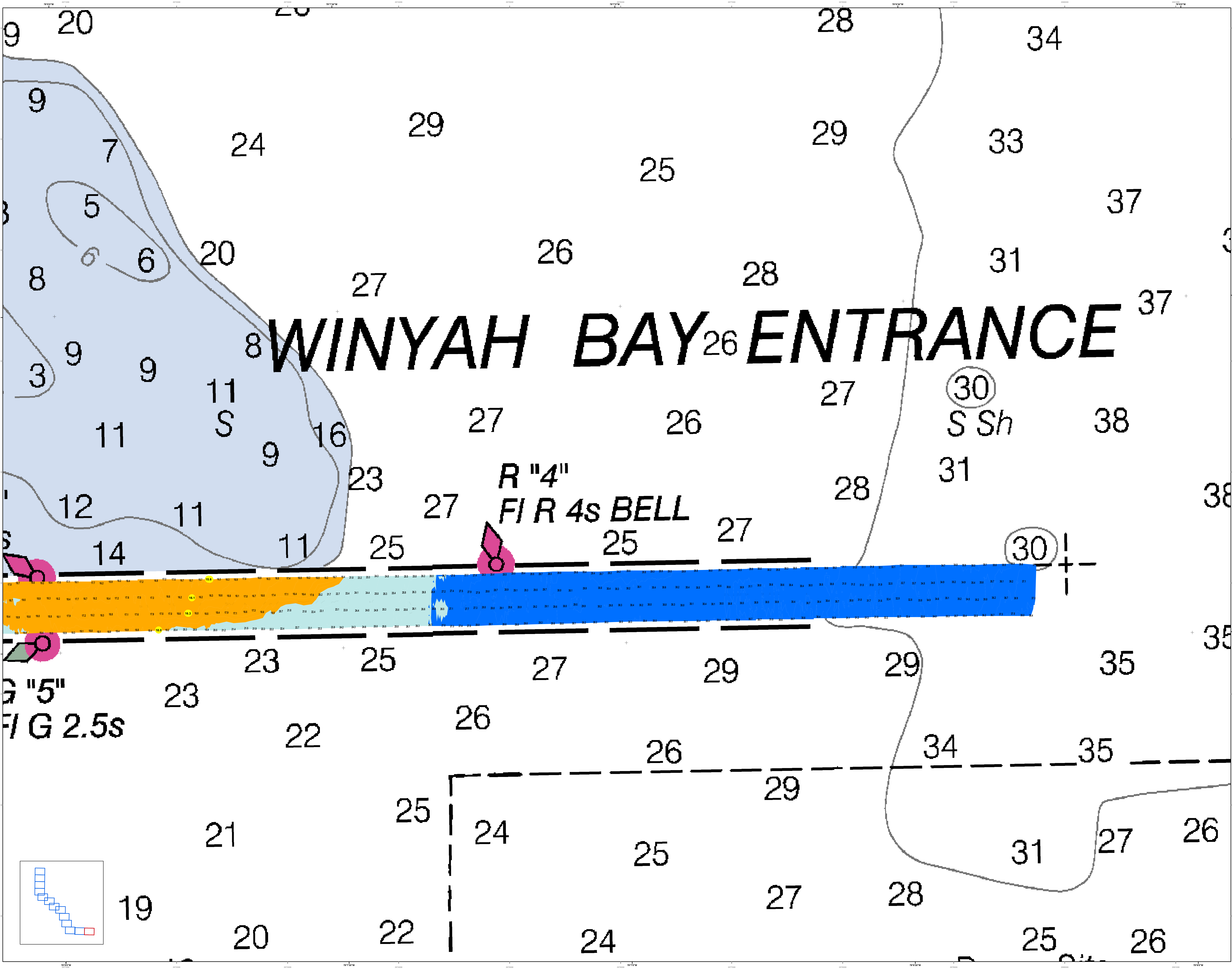
**Depth Chart Note:**  
1. The depth of 1 fathoms is shown in red.  
2. The depth of 2 fathoms is shown in orange.  
3. The depth of 3 fathoms is shown in yellow.  
4. The depth of 4 fathoms is shown in light green.  
5. The depth of 5 fathoms is shown in green.  
6. The depth of 6 fathoms is shown in dark green.  
7. The depth of 7 fathoms is shown in blue-green.  
8. The depth of 8 fathoms is shown in blue.  
9. The depth of 9 fathoms is shown in light blue.  
10. The depth of 10 fathoms is shown in medium blue.  
11. The depth of 11 fathoms is shown in dark blue.  
12. The depth of 12 fathoms is shown in very dark blue.  
13. The depth of 13 fathoms is shown in black.

**Chart Symbols:**  
S Sh: Sand Shoal  
R "4": Red buoy with 4 sides  
FIR 4s BELL: Four-sided red buoy with a bell  
G "5": Green buoy with 5 sides  
FIG 2.5s: Four-sided green buoy with 2.5 sides

**Legend:**  
Shaded Areas: Shaded areas indicate areas of special interest or concern.  
Obstructions: Obstructions are shown as black lines with symbols.  
Soundings: Soundings are shown as numbers indicating depth in fathoms.  
Contours: Contours are shown as lines connecting points of equal depth.

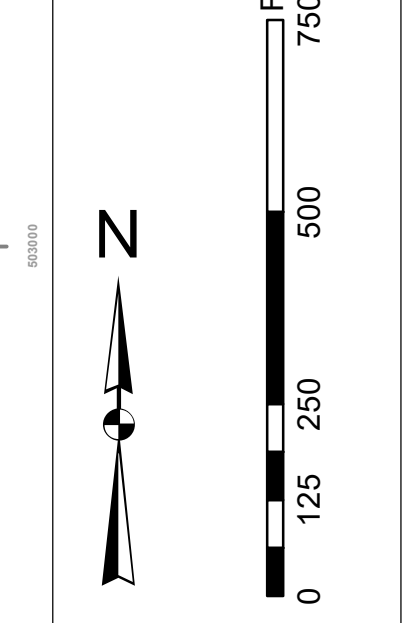
U.S. Army Corps of Engineers Charleston District Office Special Data Branch Charleston, SC 29405 CESAC-GIS@USACE.ARMY.MIL	Designed By: J. H. HARRIS Reviewed By: J. H. HARRIS Scale: 1 inch = 250 feet Projection: NAD 1983 StatePlane South Carolina FIPS 3900 Feet	Survey Date: 11 AUG 2022 Production Date: 15 AUG 2022 Project Reference Number: 20200010 Sheet Number: 001
---	---	---

**Georgetown Harbor Channel Survey**  
The information depicted on this map represents the results of surveys made on the dates indicated and can only be considered as indicating the general character of the bottom. No liability is assumed for any errors or omissions. This information is provided as a service to the public and is not intended to be used for navigation.  
Concluded on: 11 AUG 2022  
Georgetown, South Carolina

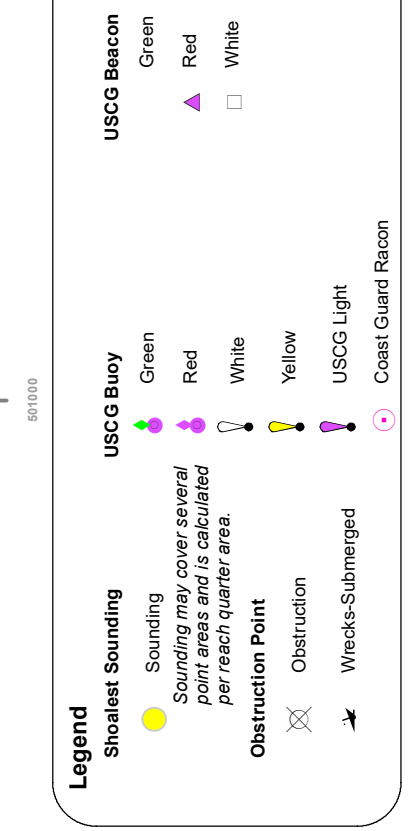


In its capacity as the U.S. Army Corps of Engineers, Charleston District Office, Special Data Branch has made this chart, including the information on this chart, available to the public. This information is provided for informational purposes only and is not intended to be used for navigation. The user assumes all responsibility for the use of this information. The Corps of Engineers is not liable for any damages, including consequential, arising from the use of this information. The information on this chart is not to be used for navigation. The user assumes all responsibility for the use of this information. The Corps of Engineers is not liable for any damages, including consequential, arising from the use of this information.

**Production Notes:**  
1. This chart is a preliminary chart.  
2. The information on this chart is not to be used for navigation.  
3. The information on this chart is not to be used for navigation.  
4. The information on this chart is not to be used for navigation.  
5. The information on this chart is not to be used for navigation.



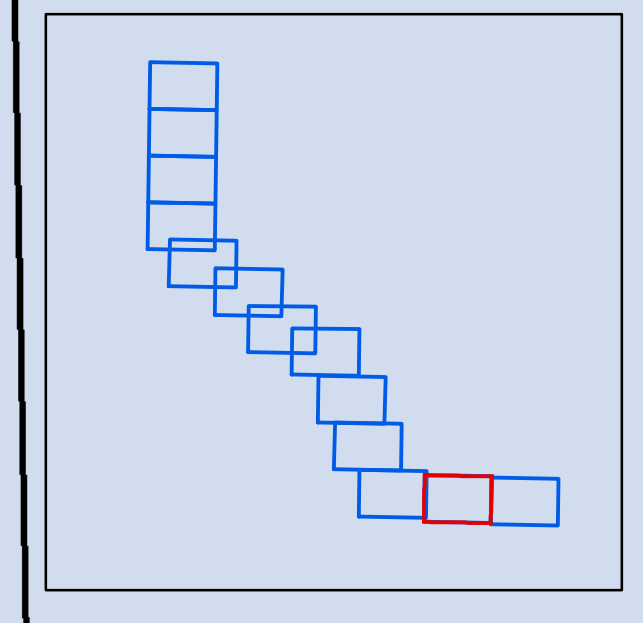
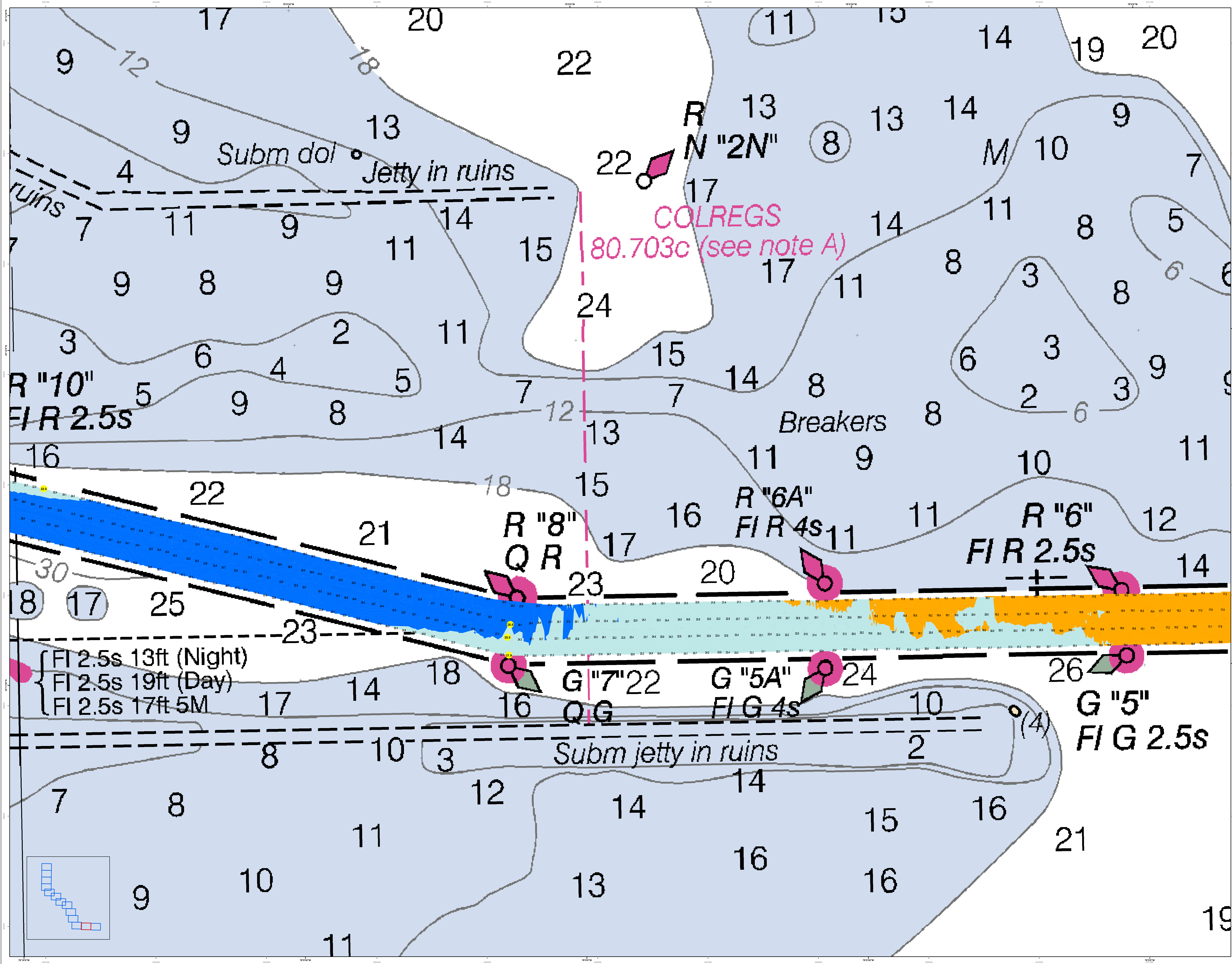
**Depth Soundings:**  
1. Soundings are in feet.  
2. Soundings are to the nearest foot.  
3. Soundings are to the nearest foot.  
4. Soundings are to the nearest foot.

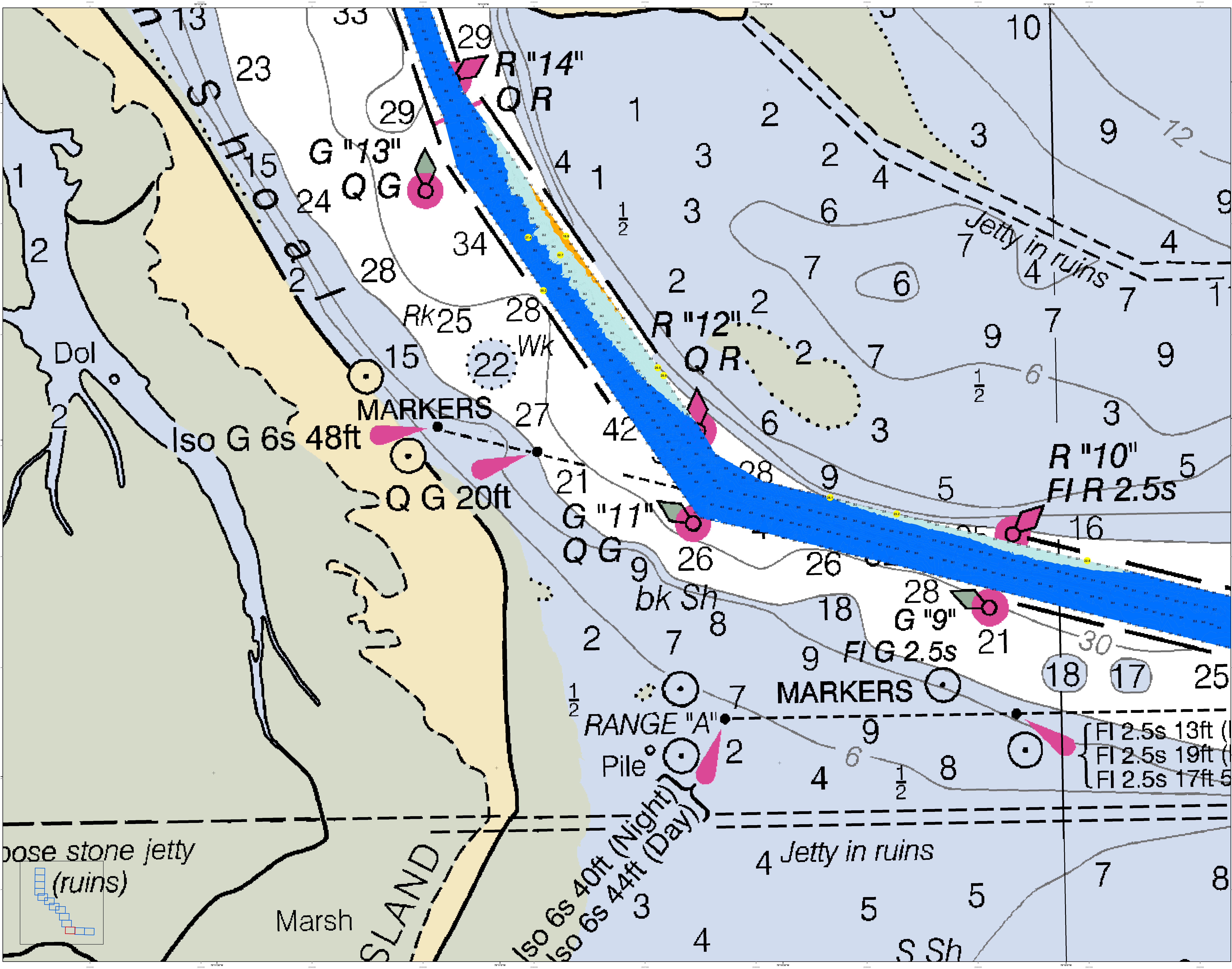


Designed By:	U.S. Army Corps of Engineers
Reviewed By:	U.S. Army Corps of Engineers
Scale:	1 inch = 250 feet
Projection:	NAD 1983 StatePlane South Carolina FIPS 3900 Feet
Survey Date:	11 AUG 2022
Production Date:	15 AUG 2022
Project Reference Number:	PC00010
Sheet Name:	CONDITION

**Georgetown Harbor Channel Survey**  
The information depicted on this map represents the results of surveys made on the dates indicated and can only be considered as indicating the general character of the bottom. The information on this chart is not to be used for navigation. The user assumes all responsibility for the use of this information. The Corps of Engineers is not liable for any damages, including consequential, arising from the use of this information.

Concluded on: 11 AUG 2022  
Georgetown, South Carolina





base stone jetty  
(ruins)

U.S. Army Corps of Engineers  
Charleston District

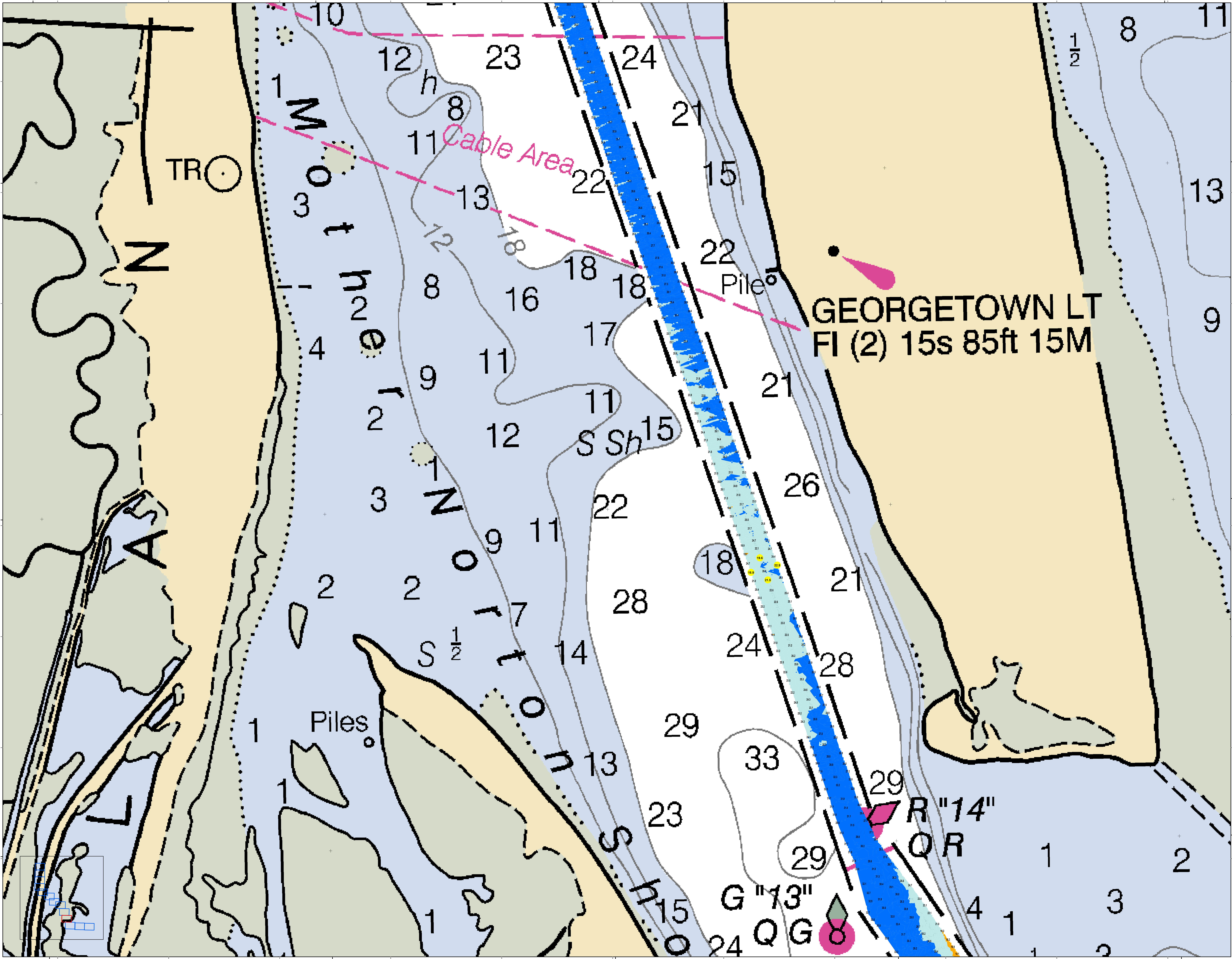
**Production Date:** 15 AUG 2022  
**Survey Date:** 11 AUG 2022  
**Project Reference Number:** 15000  
**Sheet Reference Number:** C001

**Scale:** 1 inch = 250 feet  
**Projection:** NAD 1983 StatePlane South Carolina FIPS 3800 Feet

**Legend:**

- Depth Contours: 10, 15, 20, 25, 30, 35, 40, 45, 50, 55, 60, 65, 70, 75, 80, 85, 90, 95, 100
- Navigation Aids: Iso G 6s 48ft, Iso G 20ft, Iso 6s 40ft (Night), Iso 6s 44ft (Day), R '14', R '12', R '10', G '13', G '11', G '9', FI G 2.5s, FI 2.5s 13ft, FI 2.5s 19ft, FI 2.5s 17ft-5
- Other Features: Jetty in ruins, SLAND, Marsh, Dol, Pile, RANGE 'A', MARKERS, bk Sh, S Sh

**Georgetown, South Carolina**  
 Concluded on: 11 AUG 2022  
 SHEET REFERENCE NUMBER: C001  
 SHEET 3 OF 13



**U.S. Army Corps of Engineers**  
Charleston District

**Georgetown Harbor Channel Survey**  
The information depicted on this map represents the results of surveys made on the dates indicated and can only be considered as indicating the general character of the bottom. It is not intended to be used for navigation. Concluded on: 11 AUG 2022  
Georgetown, South Carolina

**Legend**

- Soundings:** 1 to 10, 11 to 15, 16 to 20, 21 to 25, 26 to 30, 31 to 35
- Depth Contours:** 10, 15, 20, 25, 30, 35
- Obstructions:** Pile, Piles, Light
- Other:** Cable Area, Light Structure

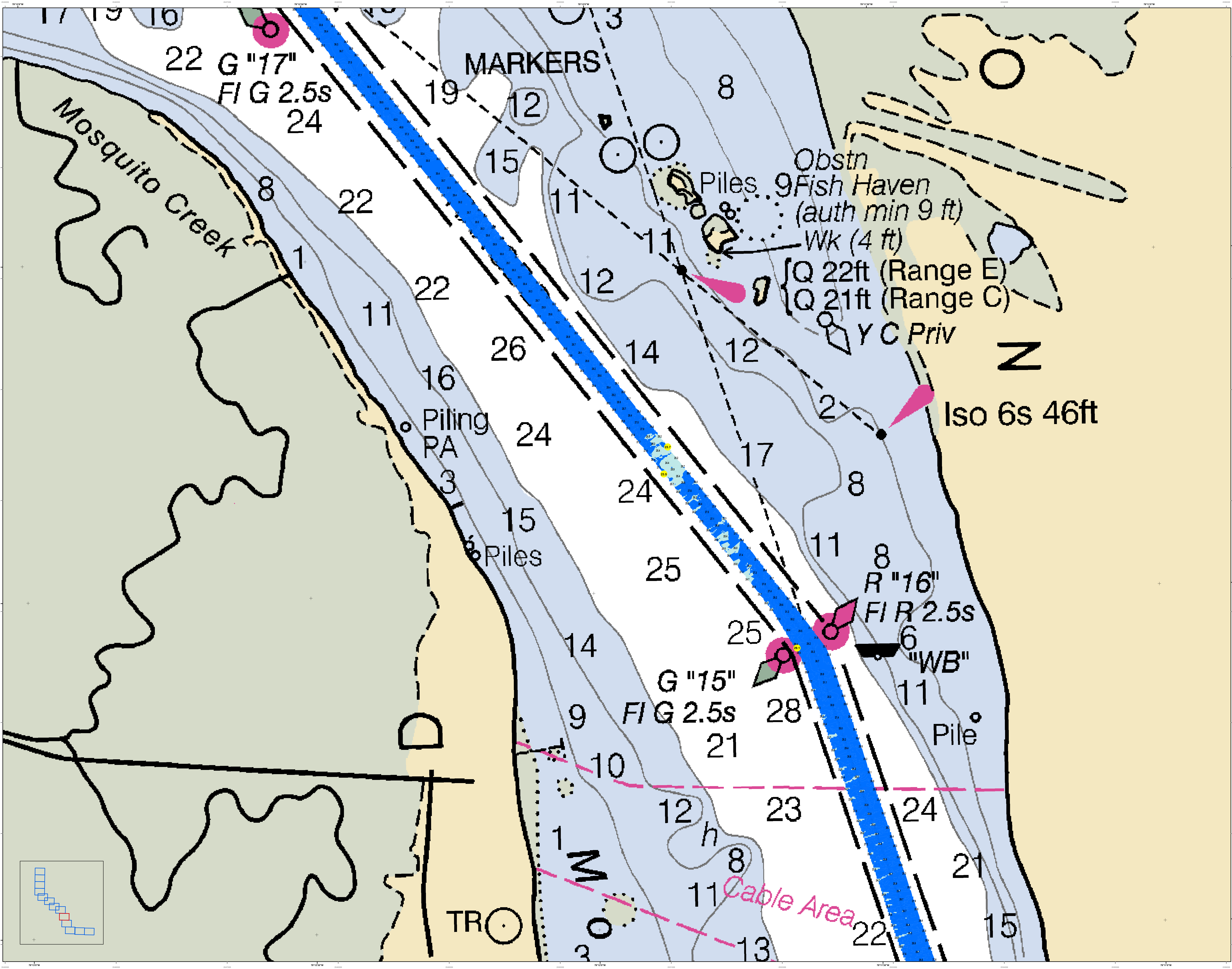
**Scale:** 1 inch = 250 feet

**Production Date:** 15 AUG 2022  
**Project Reference Number:** P000010  
**Survey Station:** CONDITION

Designed By:	U.S. Army Corps of Engineers
Reviewed By:	Charleston District
Scale:	1 inch = 250 feet
Projection:	NAD 1983 StatePlane South Carolina FIPS 3900 Feet

**U.S. Army Corps of Engineers**  
Charleston District  
Savannah Branch  
Birmingham Branch  
Charleston, SC 29403  
CESAC-GIS@USACE.ARMY.MIL

**SHEET REFERENCE NUMBER**  
C001  
SHEET 4 OF 13



U.S. Army Corps of Engineers  
Charleston District

**Production Notes:**  
1. This is a preliminary chart. It is not to be used for navigation. It is for informational purposes only. It is not to be used for navigation. It is for informational purposes only. It is not to be used for navigation. It is for informational purposes only.

**Chart Data:**  

Chart No.	Scale	Year
11100	1:50,000	2018
11101	1:50,000	2018
11102	1:50,000	2018
11103	1:50,000	2018
11104	1:50,000	2018
11105	1:50,000	2018
11106	1:50,000	2018
11107	1:50,000	2018
11108	1:50,000	2018
11109	1:50,000	2018
11110	1:50,000	2018

**Legend:**  

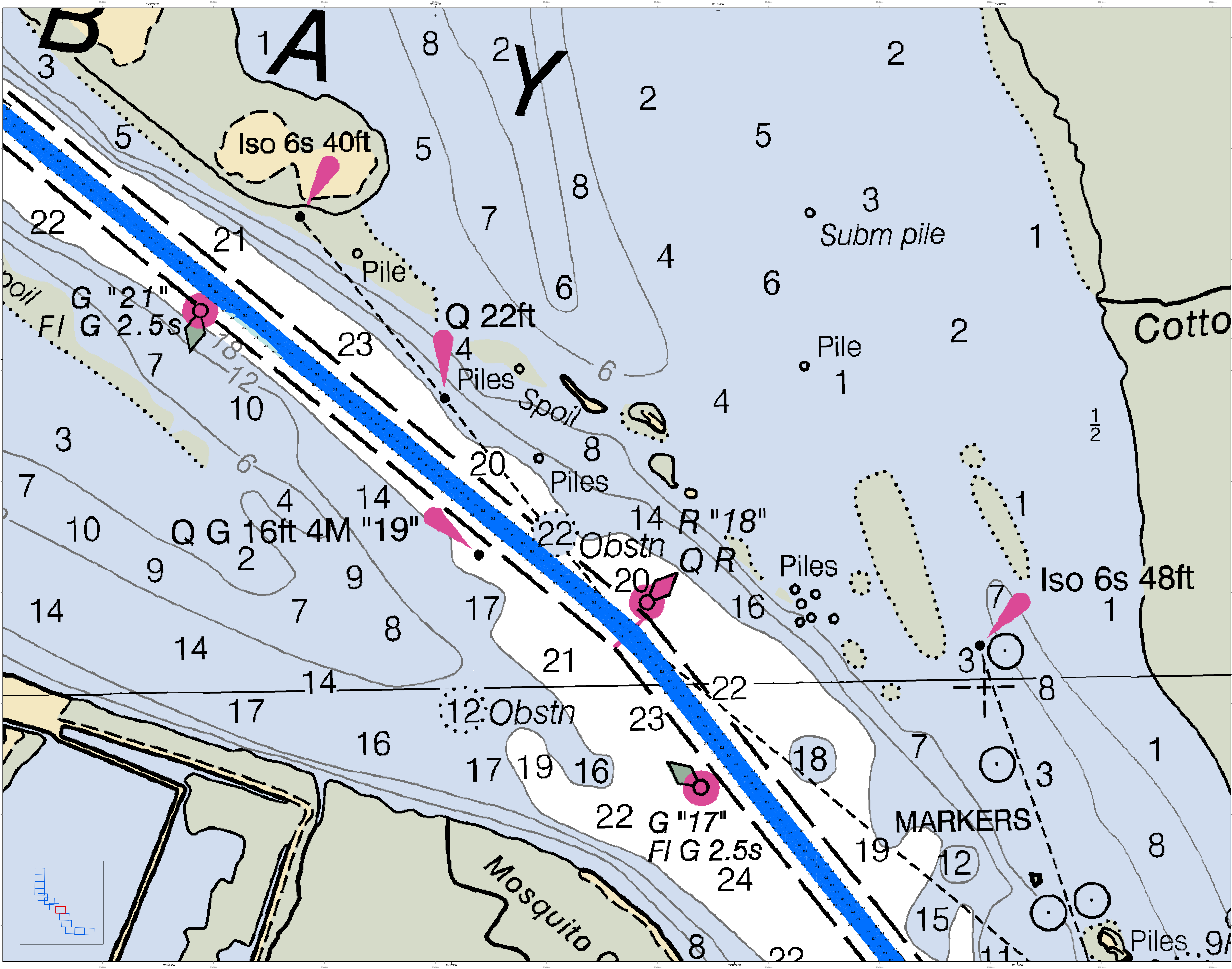
- Obstn Piles
- Y C Priv
- Iso 6s 46ft
- R "16" FIR 2.5s
- G "15" FIG 2.5s
- G "17" FIG 2.5s
- Mosquito Creek
- Piling PA
- Piles
- TRO
- Cable Area

**Metadata:**  

U.S. Army Corps of Engineers	Charleston District	Georgetown, South Carolina	
Survey Date:	11 AUG 2022	Production Date:	15 AUG 2022
Designed By:	Hydro Software v3.82	Project Reference Number:	11100010
Reviewed By:	1:50,000	Survey Scale:	1:50,000
Revised Date:	11 AUG 2022	Survey Status:	CONDITION
Projection:	NAD 1983 StatePlane South Carolina FIPS 3800 Feet		

**Georgetown Harbor Channel Survey**  
 The information depicted on this map represents the results of surveys made on the dates indicated and can only be considered as indicating the general character of the bottom. It is not to be used for navigation. It is for informational purposes only.  
 Concluded on: 11 AUG 2022  
 Georgetown, South Carolina

SHEET REFERENCE NUMBER: C001  
 SHEET 5 OF 13



U.S. Army Corps of Engineers  
Charleston District

**Georgetown Harbor Channel Survey**  
The information depicted on this map represents the results of surveys made on the dates indicated and can only be considered as indicating the general location of obstructions. It is not intended to be used for navigation.

Concluded on: 11 AUG 2022  
Georgetown, South Carolina

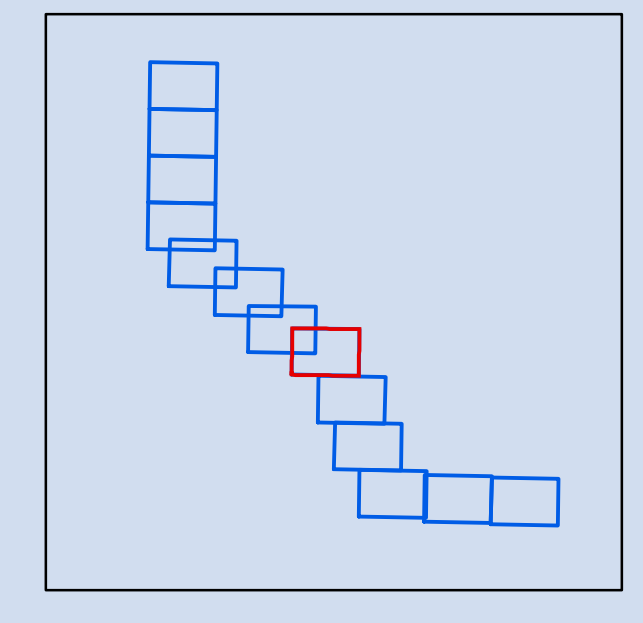
Produced by: 11 AUG 2022 15 AUG 2022  
Project Reference Number: 2020010  
Survey State: CONDITION

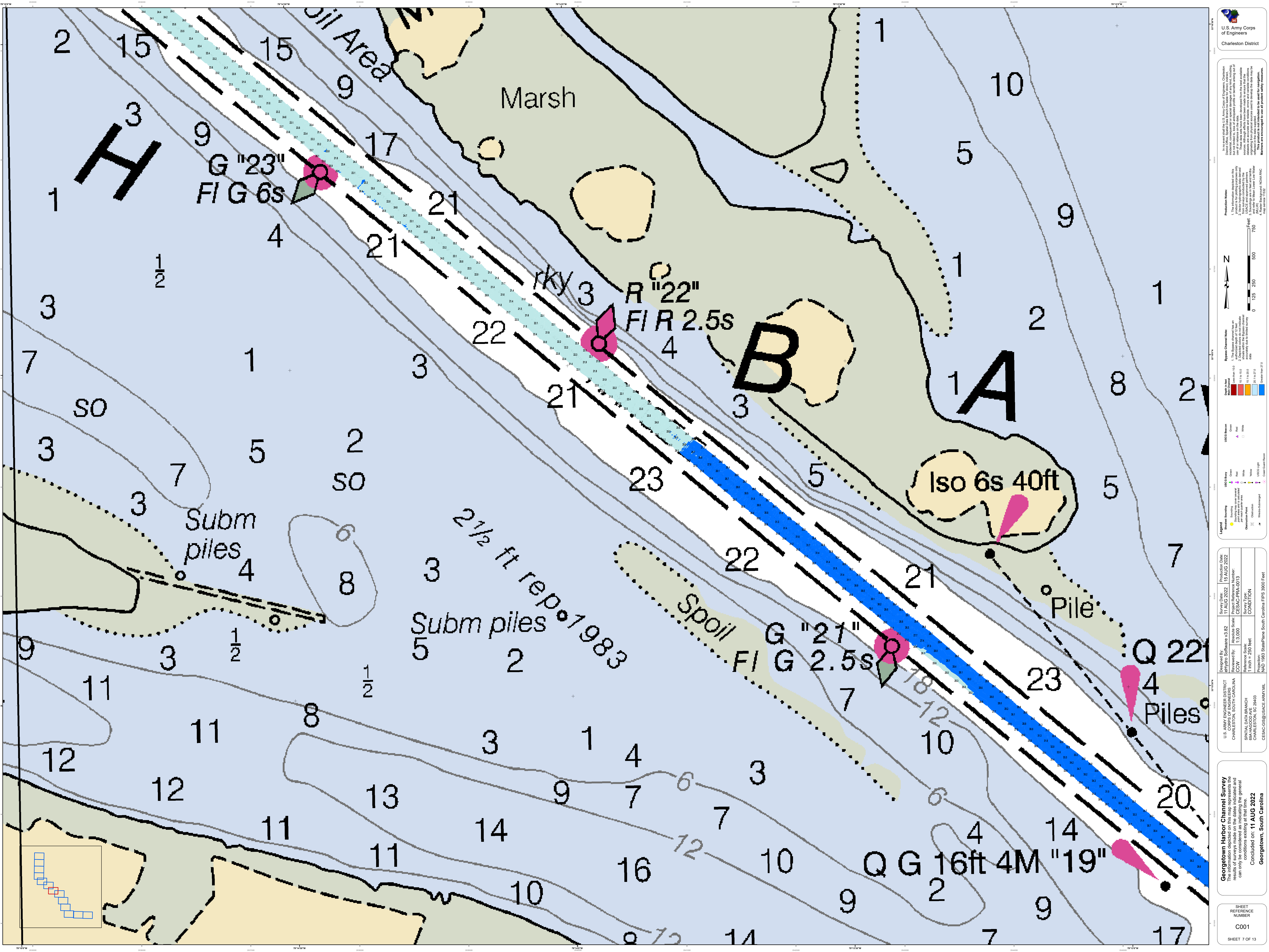
Designed By: U.S. Army Corps of Engineers  
Reviewed By: U.S. Army Corps of Engineers  
Scale: 1:50,000  
Projection: NAD 1983 StatePlane South Carolina FIPS 3800 Feet

Legend:  
 - Obstruction: Yellow circle with black outline  
 - Pile: Small black circle  
 - Spoil: Yellow shaded area  
 - Subm pile: Small black circle with a dot  
 - Iso 6s 40ft: Yellow shaded area with a pink triangle  
 - Iso 6s 48ft: Yellow shaded area with a pink triangle  
 - G 21": Pink circle with a black outline  
 - Q 22ft: Pink triangle  
 - R 18": Pink triangle  
 - G 17": Pink circle with a black outline  
 - M 19": Pink triangle  
 - Obstn: Dashed black circle  
 - Piles: Small black circles  
 - Spoil: Yellow shaded area  
 - Subm pile: Small black circle with a dot

Scale: 0 125 250 500 750 Feet

North Arrow

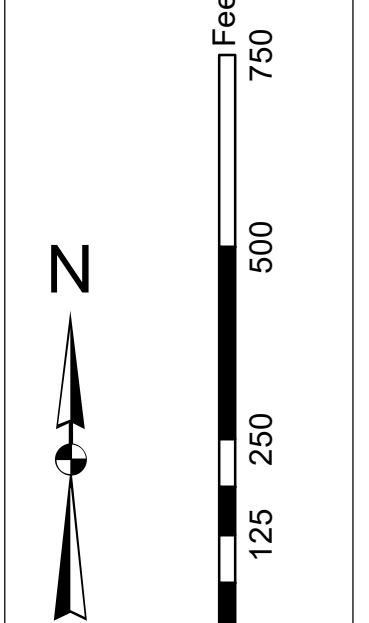




U.S. Army Corps of Engineers  
Charleston District

**Production Notes:**  
1. This is a hydrographic chart prepared from survey data collected between 1983 and 2022.  
2. This chart shows the bathymetry of the channel and adjacent areas as of the survey date. It does not show the changes in the channel and adjacent areas since the survey date.  
3. Obstructions are shown in red. Obstructions are shown in black when they are not known to be in the channel or adjacent areas.  
4. This chart is for general information only. It is not intended to be used for navigation. Mariners are encouraged to use all prudent safety measures.

**Chart Notes:**  
1. The soundings in this chart are in feet.  
2. The datum is Mean Lower Low Water (MLLW).  
3. The chart is based on the following surveys:  
a. 1983: 1:50,000 scale, Hydrographic Survey 3418  
b. 1983: 1:50,000 scale, Hydrographic Survey 3419  
c. 1983: 1:50,000 scale, Hydrographic Survey 3420  
d. 2022: 1:250,000 scale, Hydrographic Survey 3421



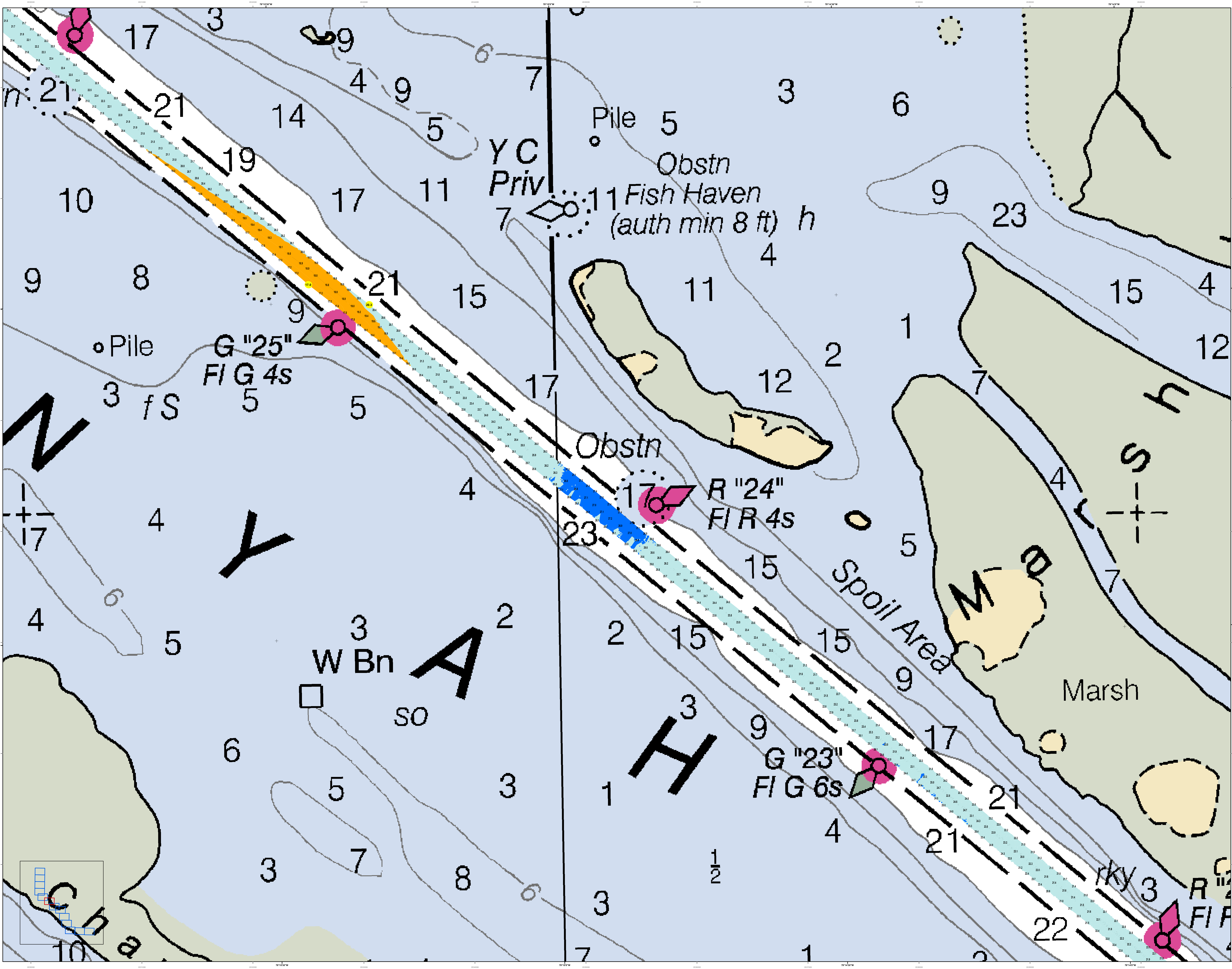
**Legend:**

- Soundings:** 1:50,000 scale; 1:250,000 scale
- Obstructions:** Red (known), Black (unknown)
- Other:** Blue (2 1/2 ft rep.), Green (Marsh), Yellow (Bathymetry)

Designed By:	U.S. Army Corps of Engineers, Charleston District
Reviewed By:	U.S. Army Corps of Engineers, Charleston District
Scale:	1 inch = 250 feet
Projection:	NAD 1983 StatePlane South Carolina FIPS 3800 Feet

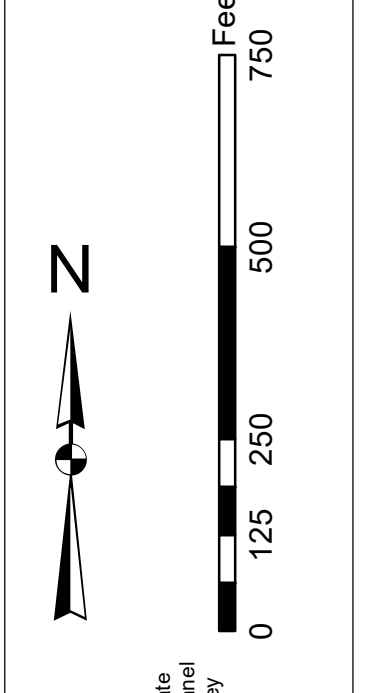
<b>Georgetown Harbor Channel Survey</b>	Production Date: 15 AUG 2022
The information depicted on this map represents the results of surveys made on the dates indicated and can only be considered as indicating the general nature of the channel and adjacent areas.	Project Reference Number: 10400010
Concluded on: 11 AUG 2022	Survey Status: CONDITION

Georgetown, South Carolina  
SHEET REFERENCE NUMBER  
C001  
SHEET 7 OF 13



In its capacity as the U.S. Army Corps of Engineers, Charleston District Office, Special Data Branch has made this chart, including the information on this chart, available to the public. This information is provided for informational purposes only and does not constitute a warranty of any kind. The user assumes all liability for any use of this information. The user is advised to consult the appropriate technical manual for the use of this information. The user is also advised to consult the appropriate technical manual for the use of this information. The user is also advised to consult the appropriate technical manual for the use of this information.

**Production Notes:**  
1. This chart is a photographic reproduction of the original chart.  
2. The original chart is available in hard copy form from the District Office.  
3. This chart is not to be used for navigation.  
4. This chart is not to be used for any other purpose.  
5. This chart is not to be used for any other purpose.  
6. This chart is not to be used for any other purpose.  
7. This chart is not to be used for any other purpose.  
8. This chart is not to be used for any other purpose.  
9. This chart is not to be used for any other purpose.  
10. This chart is not to be used for any other purpose.



**Symbol Legend:**  
Obstruction: Pink circle with crosshair.  
Pile: Small circle.  
Light: Circle with crosshair.  
Obstruction: Circle with crosshair.  
Obstruction: Circle with crosshair.  
Obstruction: Circle with crosshair.  
Obstruction: Circle with crosshair.  
Obstruction: Circle with crosshair.  
Obstruction: Circle with crosshair.  
Obstruction: Circle with crosshair.  
Obstruction: Circle with crosshair.

**Legend:**  
Soundings: Numbers representing depth in feet.  
Obstructions: Symbols for various types of obstructions.  
Piles: Symbols for piles.  
Lights: Symbols for lights.  
Obstructions: Symbols for various types of obstructions.  
Obstructions: Symbols for various types of obstructions.  
Obstructions: Symbols for various types of obstructions.  
Obstructions: Symbols for various types of obstructions.  
Obstructions: Symbols for various types of obstructions.  
Obstructions: Symbols for various types of obstructions.

**Production Date:** 15 AUG 2022  
**Survey Date:** 11 AUG 2022  
**Project Reference Number:** P000010  
**Sheet Title:** CHANNEL  
**Condition:** CONDITION

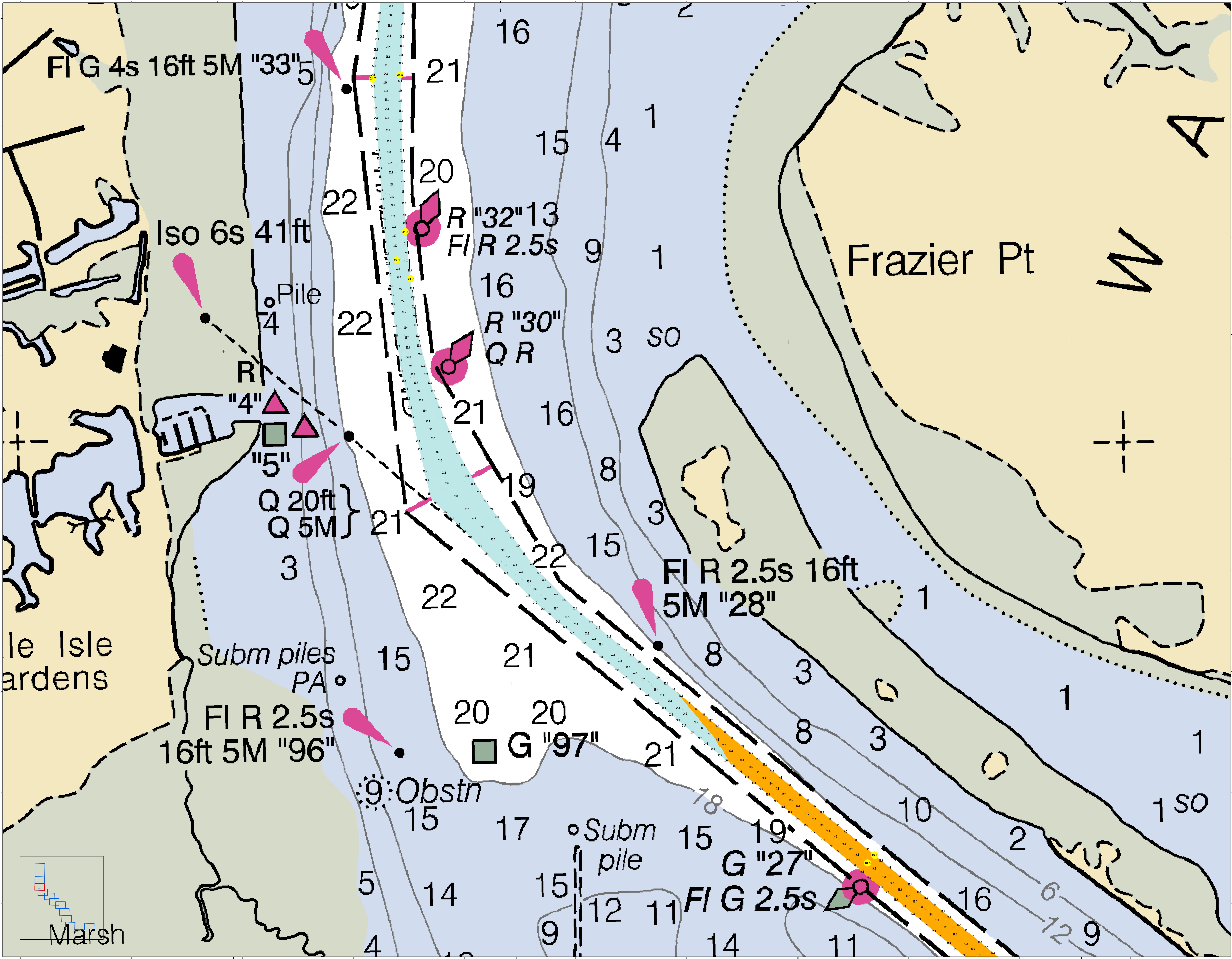
**Designed By:** Hydro Software v3.82  
**Reviewed By:** Absolute Scale  
**Scale:** 1:5000  
**Horizontal Scale:** 1 inch = 250 feet  
**Vertical Scale:** 1 inch = 250 feet  
**Projection:** NAD 1983 StatePlane South Carolina FIPS 3800 Feet

**U.S. Army Corps of Engineers District Office**  
CHARLESTON DISTRICT OFFICE  
SPECIAL DATA BRANCH  
300 BROADWAY  
CHARLESTON, SC 29405  
CESACGIS@USACE.ARMY.MIL

**Georgetown Harbor Channel Survey**  
The information depicted on this map represents the results of surveys made on the dates indicated and can only be considered as indicating the general character of the bottom. It is not to be used for navigation.  
Concluded on: 11 AUG 2022  
Georgetown, South Carolina







**U.S. Army Corps of Engineers**  
Charleston District

**Production Date:** 11 AUG 2022 | 15 AUG 2022  
**Project Reference Number:** 15030  
**Survey Station:** 15030  
**Condition:** CONDITION

**Designed By:** U.S. Army Corps of Engineers, District Office, Charleston, SC  
**Reviewed By:** U.S. Army Corps of Engineers, District Office, Charleston, SC  
**Scale:** 1 inch = 250 feet  
**Projection:** NAD 1983 StatePlane South Carolina FIPS 3800 Feet

**Georgetown Harbor Channel Survey**  
 The information depicted on this map represents the results of surveys made on the dates indicated and can only be considered as indicating the general location of objects. It is not intended to be used for navigation.  
 Concluded on: 11 AUG 2022  
 Georgetown, South Carolina

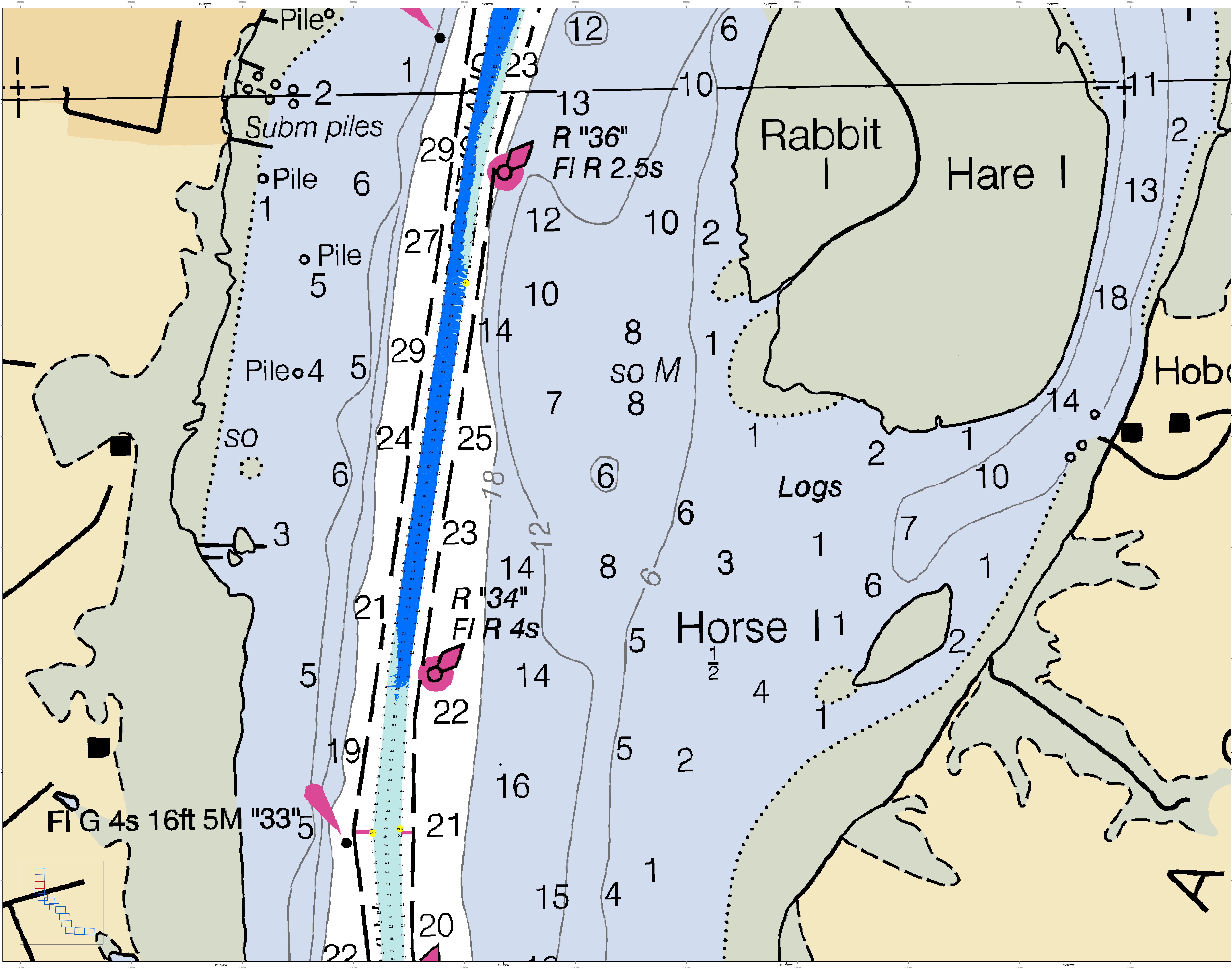
**Legend:**  
 Depth Contours: 1-22 fathoms, 3-16 meters  
 Structures: Frazier Pt, le Isle Gardens  
 Navigational Markers: Red Buoy (R), Green Buoy (G), Yellow Buoy (Y), Obstruction (Obstn), Submerged Pile (Subm pile), Marsh  
 Channel: Cyan and Orange shaded area

**Scale:** 0 125 250 500 750 Feet

**North Arrow:** N

**Inset Map:** Marsh

**Sheet Reference Number:** C001  
**Sheet 10 of 13**



**U.S. Army Corps of Engineers**  
Charleston District

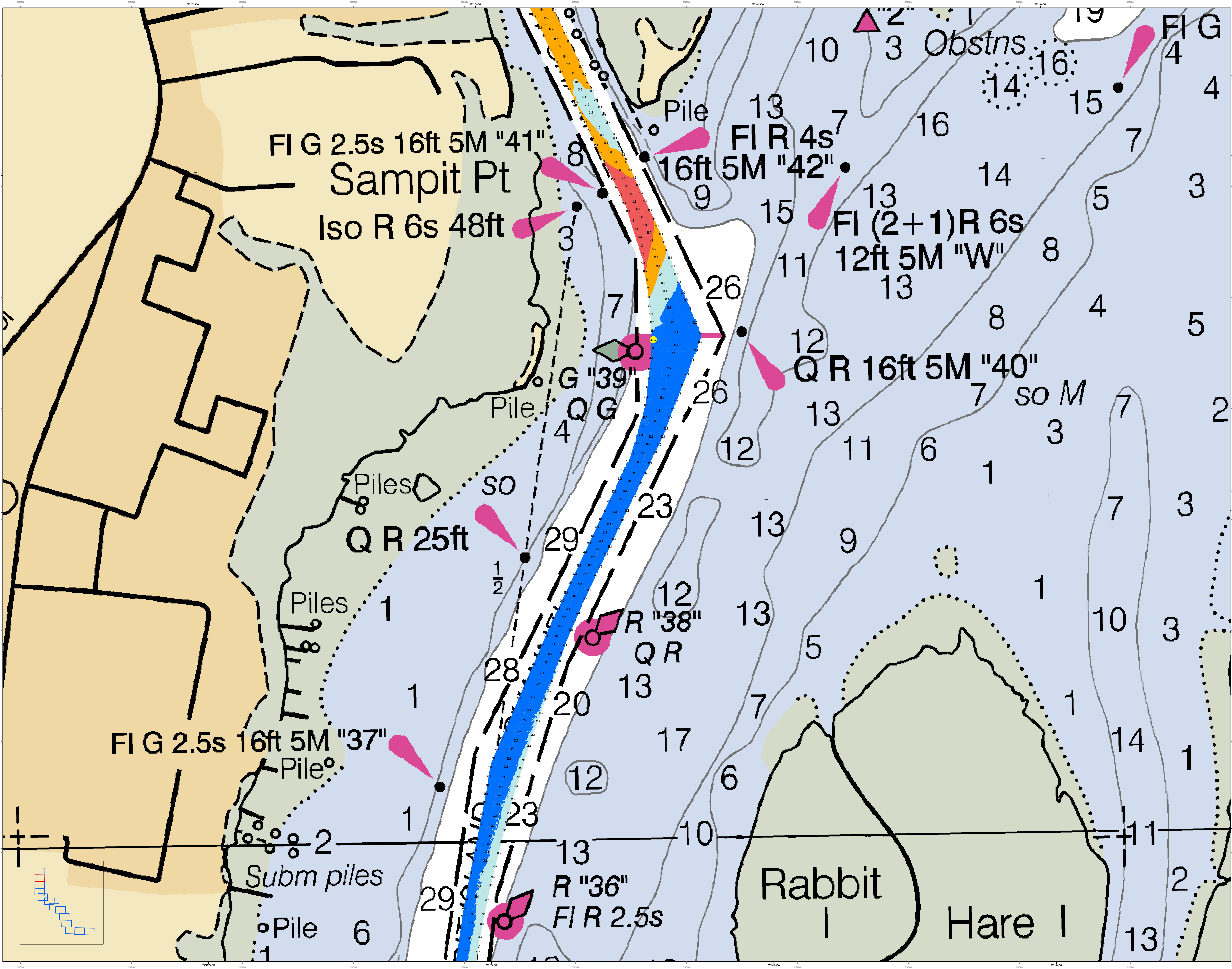
**Production Note:**  
1. This chart is a reproduction of the original hydrographic data and is not a substitute for the original data.  
2. The chart is not a substitute for the original data.  
3. The chart is not a substitute for the original data.  
4. The chart is not a substitute for the original data.

**Legend:**  
 - Soundings: 1 to 29  
 - Piles: 1 to 6  
 - Logs: 1 to 10  
 - Islands: Rabbit Hare I, Horse I, Hobo I  
 - Channel: Blue  
 - Shoreline: Dashed line  
 - Obstructions: Black squares

Designed By:	U.S. Army Corps of Engineers	Produced By:	U.S. Army Corps of Engineers
Reviewed By:	U.S. Army Corps of Engineers	Project Reference Number:	15 AUG 2022
Scale:	1:25,000	Scale:	1:25,000
Projection:	NAD 1983 StatePlane South Carolina FIPS 3800 Feet	Projection:	NAD 1983 StatePlane South Carolina FIPS 3800 Feet

**Georgetown Harbor Channel Survey**  
The information depicted on this map represents the results of surveys made on the dates indicated and can only be considered as indicating the general character of the channel and shoals.  
Concluded on: 11 AUG 2022  
Georgetown, South Carolina

**SHEET REFERENCE NUMBER**  
C001  
SHEET 11 OF 13



**Production Notes:**  
 1. This is a preliminary chart.  
 2. The information on this chart is based on the latest available data.  
 3. There are no soundings in this area.  
 4. The information on this chart is based on the latest available data.  
 5. The information on this chart is based on the latest available data.  
 6. The information on this chart is based on the latest available data.  
 7. The information on this chart is based on the latest available data.  
 8. The information on this chart is based on the latest available data.  
 9. The information on this chart is based on the latest available data.  
 10. The information on this chart is based on the latest available data.

**System Chart Notes:**  
 1. The information on this chart is based on the latest available data.  
 2. The information on this chart is based on the latest available data.  
 3. The information on this chart is based on the latest available data.  
 4. The information on this chart is based on the latest available data.  
 5. The information on this chart is based on the latest available data.  
 6. The information on this chart is based on the latest available data.  
 7. The information on this chart is based on the latest available data.  
 8. The information on this chart is based on the latest available data.  
 9. The information on this chart is based on the latest available data.  
 10. The information on this chart is based on the latest available data.

**Legend:**  
 Depth Soundings: 1 to 16 feet  
 Obstructions: 1 to 16 feet  
 Navigation Aids: 1 to 16 feet  
 Structures: 1 to 16 feet  
 Piles: 1 to 16 feet  
 Subm piles: 1 to 16 feet  
 Rabbit I  
 Hare I

**Scale:**  
 0 125 250 500 750 Feet

Designed By: jehydro	Software: v3.82	Survey Date: 11 AUG 2022	Production Date: 15 AUG 2022
Reviewed By: jehydro	Scale: 1:15,000	Project Reference Number: 16C001D	
Revised By: jehydro	Scale: 1 inch = 250 feet	Survey Station: CONDITION	
Project: MAD 1893 StatePlane South Carolina FPS 3800 Feet			

**Georgetown Harbor Channel Survey**  
 The information depicted on this map represents the results of surveys made on the dates indicated and can only be considered as indicating the general location of the objects shown.  
 Concluded on: 11 AUG 2022  
 Georgetown, South Carolina

