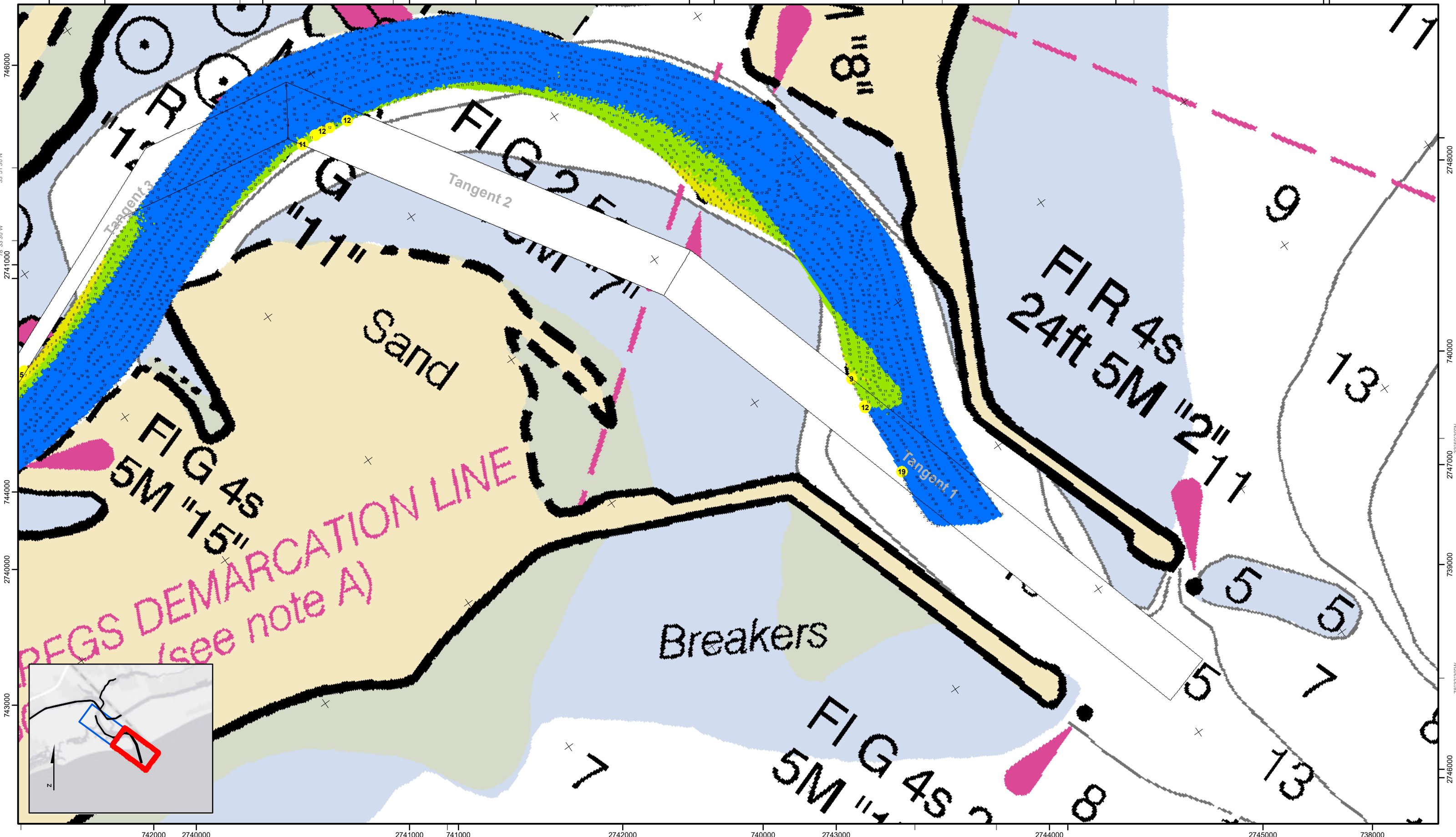


2742000 746000 33°51'30"N 2743000 78°33'0"W 745000 2744000 2745000/744000 2746000 78°32'30"W 743000 2747000 33°51'0"N 2748000



33°51'0"N 742000 2740000 2741000 78°33'30"W

Little River Inlet
 The information depicted on this map represents the results of surveys made on the dates indicated and can only be considered as indicating the general conditions existing at that time.
 Concluded on: **09 SEP 2019**
 Little River, South Carolina

U.S. ARMY ENGINEER DISTRICT
 CORPS OF ENGINEERS
 CHARLESTON, SOUTH CAROLINA

SPATIAL DATA BRANCH
 69A HAGOOD AVE
 CHARLESTON, SC 29403
 CESAC-GIS@USACE.ARMY.MIL

Designed By: eHydro Software v3.82	Survey Date: 09 SEP 2019	Production Date: 15 NOV 2019
Reviewed By: CCW	Absolute Scale: 1:6,000	Project Reference Number: CESAC-PRA-0002
Reference Scale: 1 inch = 500 feet	Survey Type: Condition	
Projection: NAD 1983 StatePlane South Carolina FIPS 3900 Feet		

Shoalest Sounding
 Sounding may cover several point areas and is calculated per reach quarter area
 "+" indicates sounding above MLLW

USCG Beacon
 Green
 Red
 White

USCG Buoy
 Green
 Red
 Coast Guard Racon

USCG Light
 White
 Yellow

Depth in feet

0-3 3 to 6 6 to 9 9 to 12 Greater Than 12

0 250 500 1,000 1,500 Feet

Production Notes:

- The information depicted on this product is for plotting purposes only.
- Vector hydrographic data derived from surveys conducted by the USACE and approved partners.
- Soundings are in feet and refer to Mean Lower Low Water (MLLW).
- Raster Background: NAD imagery dated 2013.

In no event shall the U.S. Army Corps of Engineers, Charleston District Office, Spatial Data Branch be liable for direct, indirect, incidental, consequential or special damages of any kind, including, but not limited to, loss of anticipated profits or benefits arising out of use of or reliance on the data.

These data sets have been developed from the best available sources. Although efforts have been made to ensure that the datasets are accurate and reliable, errors and variable conditions originating from physical sources used to develop the data may be reflected in the data supplied.

This product is not intended to be used for navigation.
 Mariners are encouraged to use all prudent safety measures.

U.S. Army Corps of Engineers
 Charleston District

