

SHEET REFERENCE NUMBER
C010
 Page 1 of 2

Little River Inlet
 The information depicted on this map represents the results of surveys made on the dates indicated and can only be considered as indicating the general conditions existing at that time.
 Concluded on: **19 JAN 2022**
 Little River, South Carolina

U.S. ARMY ENGINEER DISTRICT CORPS OF ENGINEERS CHARLESTON, SOUTH CAROLINA USACE CHARLESTON 69A HAGOOD AVE CHARLESTON, SC 29403 843-329-8000	Designed By: eHydro Software v3.82 Reviewed By: CCW Reference Scale: 1 inch = 525 feet Projection: NAD 1983 StatePlane South Carolina FIPS 3900 Feet	Survey Date: 19 JAN 2022 Project Reference Number: CESAC-PRA-0002 Survey Type: CONDITION	Production Date: 7 FEB 2022
---	---	--	---------------------------------------

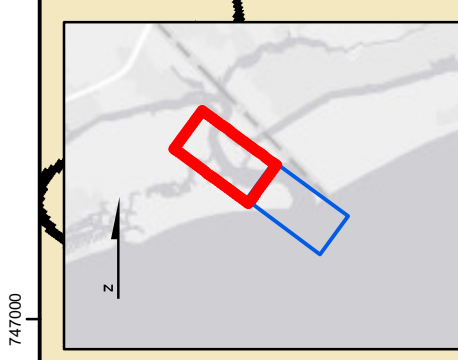
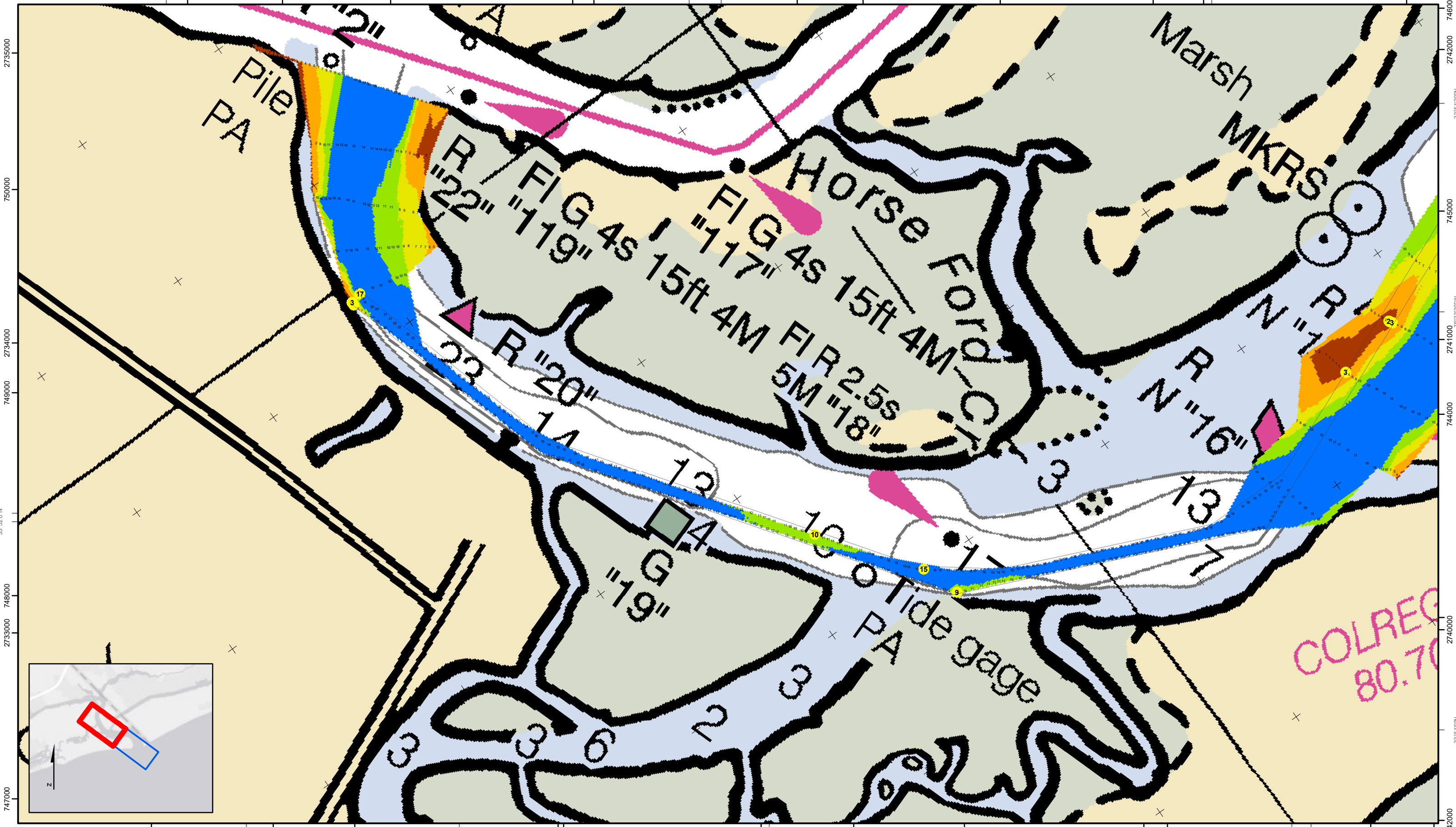
Shoalest Sounding
 Sounding may cover several point areas and is calculated per reach quarter area
 "+" indicates sounding above MLLW

USCG Beacon Green Red White	USCG Buoy Green Red Coast Guard Racon	White Yellow USCG Light
---	---	-------------------------------

Depth in feet
 0-3 3 to 6 6 to 9 9 to 12 Greater Than 12

Production Notes:
 1. The information depicted on this product is for plotting purposes only.
 2. Vector hydrographic data derived from surveys conducted by the USACE and approved partners.
 3. Soundings are in feet and refer to Mean Lower Low Water (MLLW).
 4. Raster Background: NAD imagery dated 2013.
 In no event shall the U.S. Army Corps of Engineers, Charleston District Office, Navigation Branch be liable for direct, indirect, incidental, consequential or special damages of any kind, including, but not limited to, loss of anticipated profits or benefits arising out of use of or reliance on the data.
 These data sets have been developed from the best available sources. Although efforts have been made to ensure that the datasets are accurate and reliable, errors and variable conditions originating from physical sources used to develop the data may be reflected in the data supplied.
 This product is not intended to be used for navigation.
 Mariners are encouraged to use all prudent safety measures.

78°34'30"W 2736000 750000 2737000 2738000 78°34'0"W 33°52'0"N 2739000 748000 2740000 747000 78°33'30"W 2741000 2742000 2743000 2744000 2745000 2746000



Little River Inlet
 The information depicted on this map represents the results of surveys made on the dates indicated and can only be considered as indicating the general conditions existing at that time.
 Concluded on: **19 JAN 2022**
 Little River, South Carolina

U.S. ARMY ENGINEER DISTRICT CORPS OF ENGINEERS CHARLESTON, SOUTH CAROLINA	Designed By: eHydro Software v3.82	Survey Date: 19 JAN 2022	Production Date: 7 FEB 2022
USACE CHARLESTON 69A HAGOOD AVE CHARLESTON, SC 29403 843-329-8000	Reviewed By: CCW	Absolute Scale: 1:6,300	Project Reference Number: CESAC-PRA-0002
	Reference Scale: 1 inch = 525 feet	Survey Type: CONDITION	
	Projection: NAD 1983 StatePlane South Carolina FIPS 3900 Feet		

Shoalest Sounding
 ● Sounding
 Sounding may cover several point areas and is calculated per reach quarter area
 *+ indicates sounding above MLLW

USCG Beacon
 ■ Green
 ▲ Red
 □ White

USCG Buoy
 ● Green
 ● Red
 ● Coast Guard Racon

USCG Light
 ○ White
 ○ Yellow
 ○ USCG Light

Depth in feet
 0-3 3 to 6 6 to 9 9 to 12 Greater Than 12

0 250 500 1,000 1,500 Feet

Production Notes:
 1. The information depicted on this product is for plotting purposes only.
 2. Vector hydrographic data derived from surveys conducted by the USACE and approved partners.
 3. Soundings are in feet and refer to Mean Lower Low Water (MLLW).
 4. Raster Background: NAD imagery dated 2013.

In no event shall the U.S. Army Corps of Engineers, Charleston District Office, Navigation Branch be liable for direct, indirect, incidental, consequential or special damages of any kind, including, but not limited to, loss of anticipated profits or benefits arising out of use of or reliance on the data.
 These data sets have been developed from the best available sources. Although efforts have been made to ensure that the datasets are accurate and reliable, errors and variable conditions originating from physical sources used to develop the data may be reflected in the data supplied.
 This product is not intended to be used for navigation.
 Mariners are encouraged to use all prudent safety measures.

U.S. Army Corps of Engineers
 Charleston District