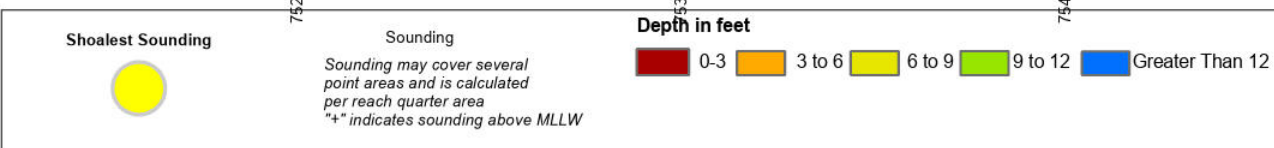


SHEET
REFERENCE
NUMBER
C011
Page 1 of 1

IC_02_CBC
The information depicted on this map represents the results of surveys made on the dates indicated and can only be considered as indicating the general conditions existing at that time.
Concluded on: 29 JAN 2025
Calabash, North Carolina

U.S. ARMY ENGINEER DISTRICT CORPS OF ENGINEERS CHARLESTON, SOUTH CAROLINA	Reviewed By: CCW	Absolute Scale: 1:6,000	Survey Date: 29 JAN 2025	Production Date: 11 FEB 2025
SPATIAL DATA BRANCH 69A HAGOOD AVE CHARLESTON, SC 29403	Reference Scale: 1 inch = 500 feet	Project Reference Number: CESAC-PRA-0007	Survey Type: CONDITION	
CESAC-GIS@USACE.ARMY.MIL	Projection: NAD 1983 StatePlane South Carolina FIPS 3900 Feet			



Production Notes:
1. The information depicted on this product is for plotting purposes only.
2. Vector hydrographic data derived from surveys conducted by the USACE and approved partners.
3. Soundings are in feet and refer to Mean Lower Low Water (MLLW).
This product is not intended to be used for navigation. Mariners are encouraged to use all prudent safety measures.

In no event shall the U.S. Army Corps of Engineers, Charleston District Office, Spatial Data Branch be liable for direct, indirect, incidental, consequential or special damages of any kind, including, but not limited to, loss of anticipated profits or benefits arising out of use of or reliance on the data.
These data sets have been developed from the best available sources. Although efforts have been made to ensure that the datasets are accurate and reliable, errors and variable conditions originating from physical sources used to develop the data may be reflected in the data supplied.

