

Murrells Inlet Channel
 The information depicted on this map represents the results of surveys made on the dates indicated and can only be considered as indicating the general conditions existing at that time.
 Concluded on: 16 MAR 2023
 Murrells Inlet, South Carolina

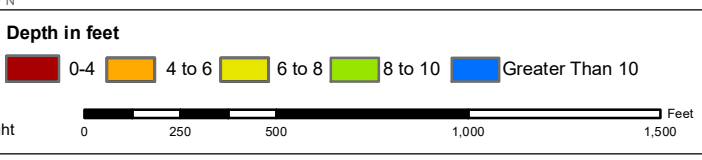
U.S. ARMY ENGINEER DISTRICT CORPS OF ENGINEERS CHARLESTON, SOUTH CAROLINA	Designed By: eHydro Software v3.82	Survey Date: 16 MAR 2023	Production Date: 20 MAR 2023
SPATIAL DATA BRANCH 69A HAGOOD AVE. CHARLESTON, SC 29403 CESAC-GIS@USACE.ARMY.MIL	Reviewed By: CCW	Absolute Scale: 1:6,000	Project Reference Number: CESAC-PRA-0040
	Reference Scale: 1 inch = 500 feet	Survey Type: CONDITION	
	Projection: NAD 1983 StatePlane South Carolina FIPS 3900 Feet		

Shoalest Sounding
 ● Sounding
 Sounding may cover several point areas and is calculated per reach quarter area
 *+ indicates sounding above MLLW

USCG Beacon
 ● Green
 ▲ Red
 □ White

USCG Buoy
 ● Green
 ● Red
 ● Coast Guard Racon

USCG Light
 ● White
 ● Yellow



Production Notes:

- The information depicted on this product is for plotting purposes only.
- Vector hydrographic data derived from surveys conducted by the USACE and approved partners.
- Soundings are in feet and refer to Mean Lower Low Water (MLLW).
- Raster Background: PanSharpened Worldview-2 imagery dated 2014.

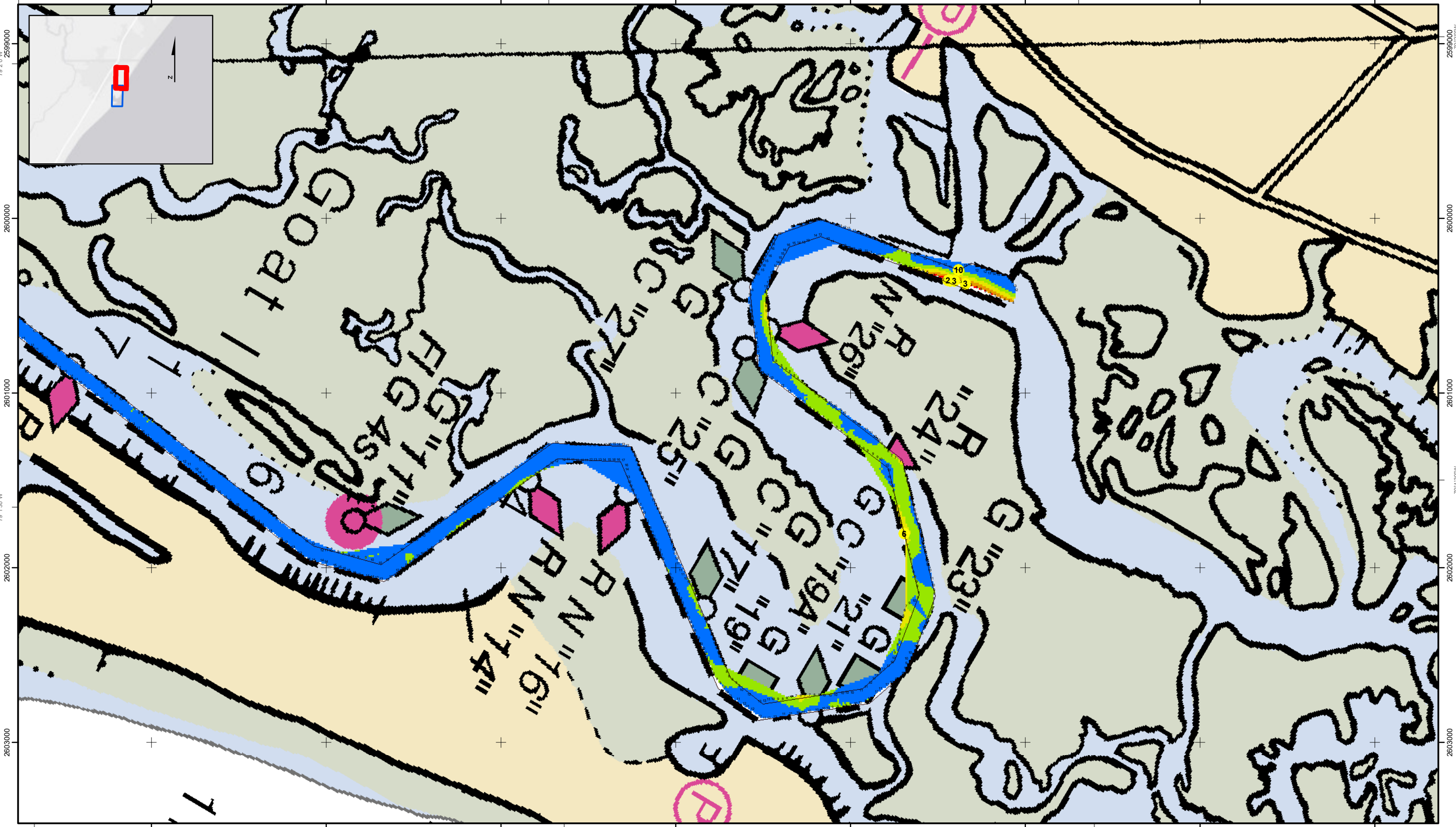
In no event shall the U.S. Army Corps of Engineers, Charleston District Office, Spatial Data Branch be liable for direct, indirect, incidental, consequential or special damages of any kind, including, but not limited to, loss of anticipated profits or benefits arising out of use of or reliance on the data.

These data sets have been developed from the best available sources. Although efforts have been made to ensure that the database are accurate and reliable, errors and variable conditions originating from physical sources used to develop the data may be reflected in the data supplied.

This product is not intended to be used for navigation.
 Mariners are encouraged to use all prudent safety measures.

U.S. Army Corps of Engineers
 Charleston District

33°32'30"N 628000 629000 630000 631000 632000 633000 634000 635000

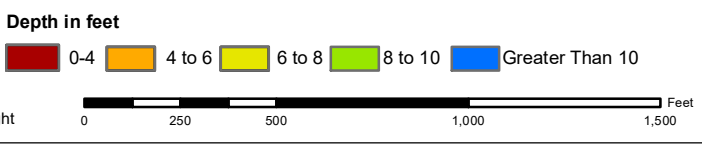


33°32'30"N 628000 629000 630000 631000 632000 633000 634000 635000

Murrells Inlet Channel
 The information depicted on this map represents the results of surveys made on the dates indicated and can only be considered as indicating the general conditions existing at that time.
 Concluded on: **16 MAR 2023**
 Murrells Inlet, South Carolina

U.S. ARMY ENGINEER DISTRICT CORPS OF ENGINEERS CHARLESTON, SOUTH CAROLINA	Designed By: eHydro Software v3.82	Survey Date: 16 MAR 2023	Production Date: 20 MAR 2023
SPATIAL DATA BRANCH 69A HAGOOD AVE. CHARLESTON, SC 29403 CESAC-GIS@USACE.ARMY.MIL	Reviewed By: CCW	Absolute Scale: 1:6,000	Project Reference Number: CESAC-PRA-0040
	Reference Scale: 1 inch = 500 feet	Survey Type: CONDITION	
	Projection: NAD 1983 StatePlane South Carolina FIPS 3900 Feet		

Shoalest Sounding	USCG Beacon	USCG Buoy	White
● Sounding	■ Green	● Green	● White
Sounding may cover several point areas and is calculated per reach quarter area	▲ Red	● Red	● Yellow
*+ indicates sounding above MLLW	□ White	● Coast Guard Racon	● USCG Light



Production Notes:

- The information depicted on this product is for plotting purposes only
- Vector hydrographic data derived from surveys conducted by the USACE and approved partners
- Soundings are in feet and refer to Mean Lower Low Water (MLLW)
- Raster Background: Pan-sharpened Worldview-2 imagery dated 2014

In no event shall the U.S. Army Corps of Engineers, Charleston District Office, Spatial Data Branch be liable for direct, indirect, incidental, consequential or special damages of any kind, including, but not limited to, loss of anticipated profits or benefits arising out of use of or reliance on the data.

These data sets have been developed from the best available sources. Although efforts have been made to ensure that the database is accurate and reliable, errors and variable conditions originating from physical sources used to develop the data may be reflected in the data supplied.

This product is not intended to be used for navigation. Mariners are encouraged to use all prudent safety measures.

U.S. Army Corps of Engineers
 Charleston District

SHEET REFERENCE NUMBER
C004
 Page 2 of 2