

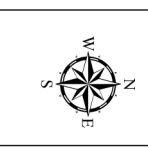
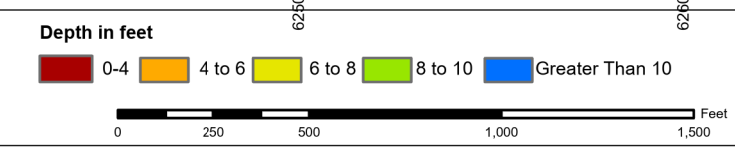
SHEET REFERENCE NUMBER
C004
Page 1 of 2

IC_03_MIC
The information depicted on this map represents the results of surveys made on the dates indicated and can only be considered as indicating the general conditions existing at that time.
Concluded on: 30 APR 2024
Murrells Inlet, South Carolina

U.S. ARMY ENGINEER DISTRICT CORPS OF ENGINEERS CHARLESTON, SOUTH CAROLINA	Survey Date: 30 APR 2024 Production Date: 02 MAY 2024
SPATIAL DATA BRANCH 69A HAGOOD AVE. CHARLESTON, SC 29403	Reviewed By: CCW Absolute Scale: 1:6,000 Reference Scale: 1 inch = 500 feet Project Reference Number: CESAC-PRA-0040 Survey Type: CONDITION
CESAC-GIS@USACE.ARMY.MIL	Projection: NAD 1983 StatePlane South Carolina FIPS 3900 Feet

Shoalest Sounding

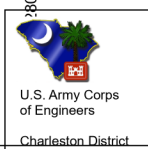
Sounding
Sounding may cover several point areas and is calculated per reach quarter area
"i" indicates sounding above MLLW

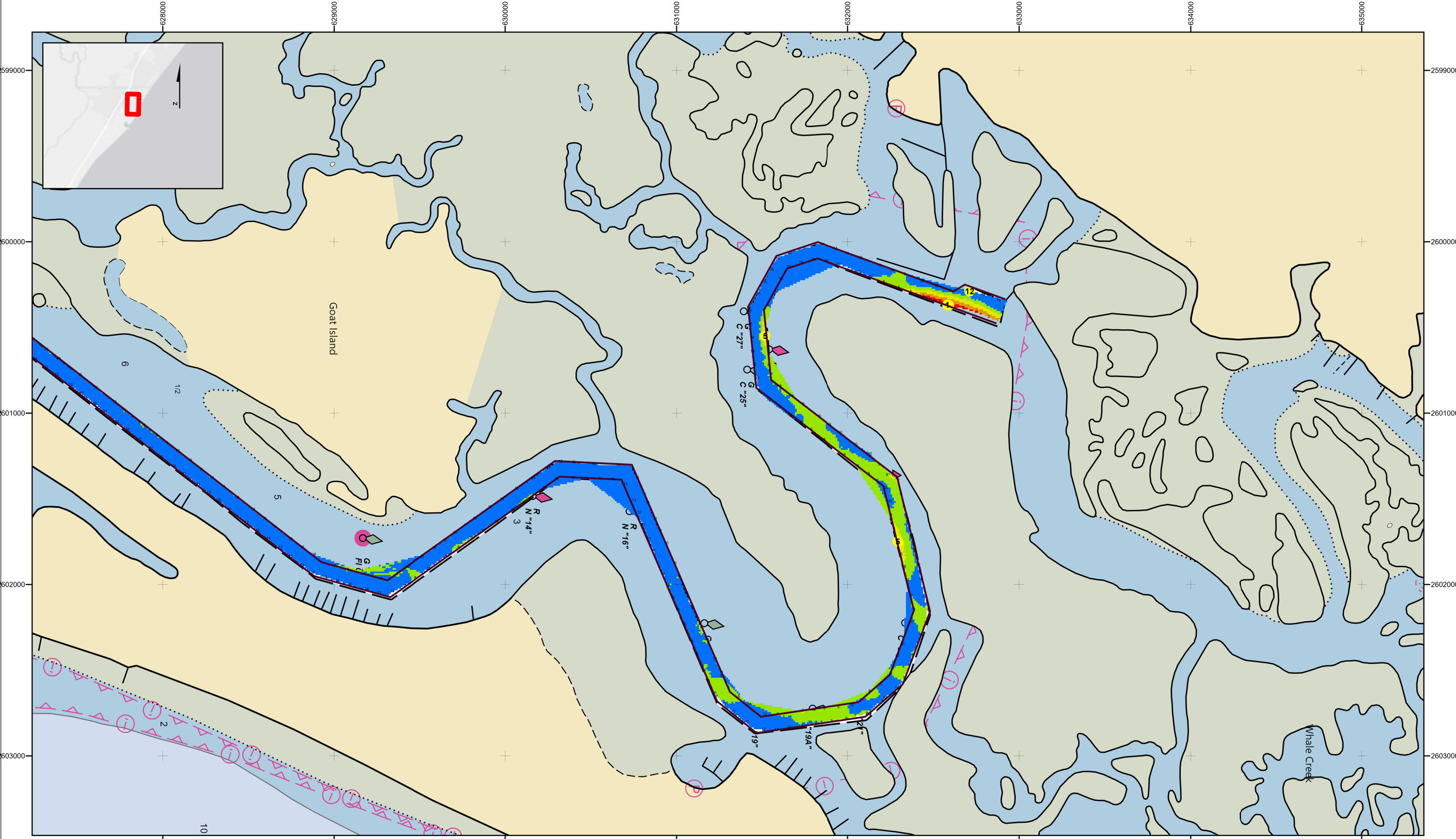


Production Notes:

- The information depicted on this product is for plotting purposes only.
- Vector hydrographic data derived from surveys conducted by the USACE and approved partners.
- Soundings are in feet and refer to Mean Lower Low Water (MLLW).

In no event shall the U.S. Army Corps of Engineers, Charleston District Office, Spatial Data Branch be liable for direct, indirect, incidental, consequential or special damages of any kind, including, but not limited to, loss of anticipated profits or benefits arising out of use of or reliance on the data.
These data sets have been developed from the best available sources. Although efforts have been made to ensure that the datasets are accurate and reliable, errors and variable conditions originating from physical sources used to develop the data may be reflected in the data supplied.
This product is not intended to be used for navigation.
Mariners are encouraged to use all prudent safety measures.




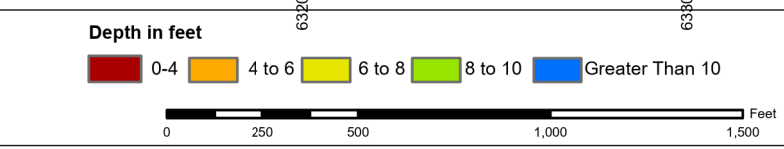


IC_03_MI...
 The information depicted on this map represents the results of surveys made on the dates indicated and can only be considered as indicating the general conditions existing at that time.
 Concluded on: 30 APR 2024
 Murrells Inlet, South Carolina

U.S. ARMY ENGINEER DISTRICT
 CORPS OF ENGINEERS
 CHARLESTON, SOUTH CAROLINA
 SPATIAL DATA BRANCH
 69A HAGOOD AVE.
 CHARLESTON, SC 29403
 CESAC-GIS@USACE.ARMY.MIL

Reviewed By: CCW	Absolute Scale: 1:6,000	Project Reference Number: CESAC-PRA-0040
Reference Scale: 1 inch = 500 feet	Survey Type: CONDITION	
Projection: NAD 1983 StatePlane-South Carolina FIPS 3900 Feet		

Shoalest Sounding

 Sounding may cover several point areas and is calculated per reach quarter area
 "+" indicates sounding above MLLW



Production Notes

- The information depicted on this product is for plotting purposes only
- Vector hydrographic data derived from surveys conducted by the USACE and approved partners
- Soundings are in feet and refer to Mean Lower Low Water (MLLW)

In no event shall the U.S. Army Corps of Engineers, Charleston District Office, Spatial Data Branch be liable for direct, indirect, incidental, consequential or special damages of any kind, including, but not limited to, loss of anticipated profits or benefits arising out of use of or reliance on the data.
 These data sets have been developed from the best available sources. Although efforts have been made to ensure that the datasets are accurate and reliable, errors and variable conditions originating from physical sources used to develop the data may be reflected in the data supplied.
 This product is not intended to be used for navigation.
 Mariners are encouraged to use all prudent safety measures.



SHEET REFERENCE NUMBER
C004
 Page 2 of 2