



2572000

2573000

2572000

2573000

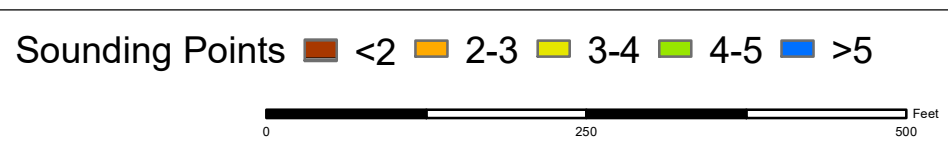
SHEET
REFERENCE
NUMBER
C023
Page of

Brookgreen Garden Canal
The information depicted on this map represents the results of surveys made on the dates indicated and can only be considered as indicating the general conditions existing at that time.
Concluded on: **29 JAN 2020**
Murrells Inlet, South Carolina

U.S. ARMY ENGINEER DISTRICT
CORPS OF ENGINEERS
CHARLESTON, SOUTH CAROLINA
SPATIAL DATA BRANCH
69A HAGOOD AVE
CHARLESTON, SC 29403
CESAC-GIS@USACE.ARMY.MIL

Designed By: eHydro Software v3.82	Survey Date: 29 JAN 2019	Production Date: 30 JAN 2019
Reviewed By: CCW	Absolute Scale: 1:1,800	Project Reference Number: CESAC-PRA-0034
Reference Scale: 1 inch = 150 feet	Survey Type: CONDITION	
Projection: NAD 1983 StatePlane South Carolina FIPS 3900 Feet		

Shoalest Sounding
● Sounding
Sounding may cover several point areas and is calculated per reach quarter area
"±" indicates sounding above MLLW



Production Notes:
1. The information depicted on this product is for plotting purposes only
2. Vector hydrographic data derived from surveys conducted by the USACE and approved partners
3. Soundings are in feet and refer to Mean Lower Low Water (MLLW)
4. Raster Background: ArcGIS Online Image Basemap dated 2010 - 2011

In no event shall the U.S. Army Corps of Engineers, Charleston District Office, Spatial Data Branch be liable for direct, indirect, incidental, consequential or special damages of any kind, including, but not limited to, loss of anticipated profits or benefits arising out of use of or reliance on the data.
These data sets have been developed from the best available sources. Although efforts have been made to ensure that the datasets are accurate and reliable, errors and variable conditions originating from physical sources used to develop the data may be reflected in the data supplied.
This product is not intended to be used for navigation. Mariners are encouraged to use all prudent safety measures.

