

**SHEET REFERENCE NUMBER**  
C014  
Page 1 of 5

**Folly River Channel**  
The information depicted on this map represents the results of surveys made on the dates indicated and can only be considered as indicating the general conditions existing at that time.  
Concluded on: **22 JAN 2021**  
Folly Beach, South Carolina

U.S. ARMY ENGINEER DISTRICT  
CORPS OF ENGINEERS  
CHARLESTON, SOUTH CAROLINA

SPATIAL DATA BRANCH  
69A HAGOOD AVE.  
CHARLESTON, SC 29403  
CESAC-GIS@USACE.ARMY.MIL

Designed By: <b>eHydro Software v3.82</b>	Survey Date: <b>22 JAN 2021</b>	Production Date: <b>29 JAN 2021</b>
Reviewed By: <b>CCW</b>	Absolute Scale: <b>1:5430</b>	Project Reference Number: <b>CESAC-PRA-0009</b>
Reference Scale: <b>1 inch = 453 feet</b>	Survey Type: <b>CONDITION</b>	
Projection: <b>NAD 1983 StatePlane South Carolina FIPS 3900 Feet</b>		

**Shoalest Sounding**  
Sounding may cover several point areas and is calculated per reach quarter area  
\*+ indicates sounding above MLLW

**USCG Beacon**  
Green  
Red  
White

**USCG Buoy**  
Green  
Red  
Coast Guard Racon

White  
Yellow  
USCG Light

**Depth in feet**

0-3    3 to 6    6 to 9    9 to 12    Greater Than 12

0    250    500    1,000    1,500 Feet

**Production Notes:**

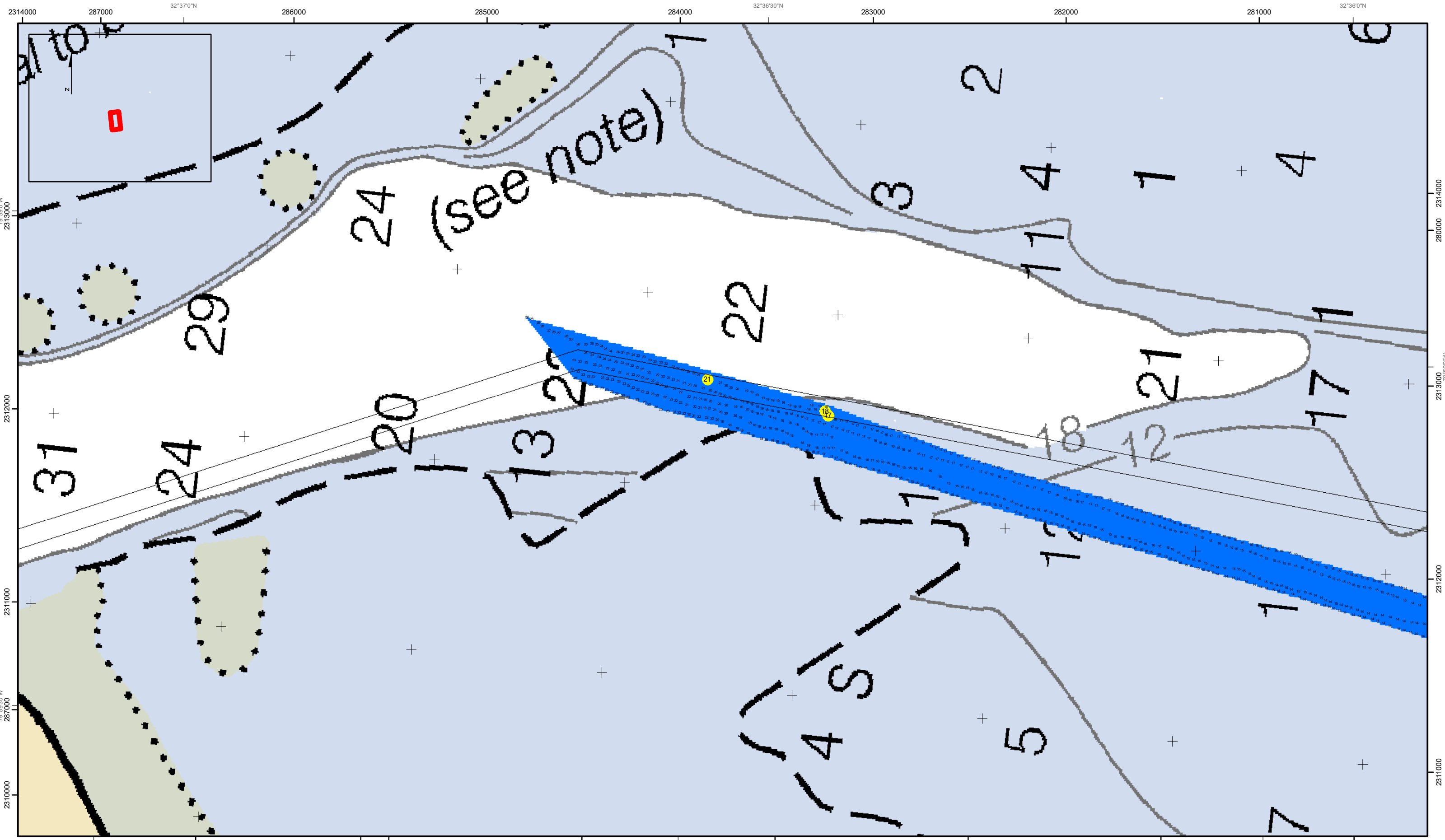
- The information depicted on this product is for plotting purposes only.
- Vector hydrographic data derived from surveys conducted by the USACE and approved partners.
- Soundings are in feet and refer to Mean Lower Low Water (MLLW).
- Raster Background: Panharperned Worldview-2 imagery dated 2014.

In no event shall the U.S. Army Corps of Engineers, Charleston District Office, Spatial Data Branch be liable for direct, indirect, incidental, consequential or special damages of any kind, including, but not limited to, loss of anticipated profits or benefits arising out of use of or reliance on the data.

These data sets have been developed from the best available sources. Although efforts have been made to ensure that the datasets are accurate and reliable, errors and variable conditions originating from physical sources used to develop the data may be reflected in the data supplied.

This product is not intended to be used for navigation.  
Mariners are encouraged to use all prudent safety measures.





SHEET  
REFERENCE  
NUMBER  
C014  
Page 2 of 5

**Folly River Channel**  
The information depicted on this map represents the results of surveys made on the dates indicated and can only be considered as indicating the general conditions existing at that time.  
Concluded on: **22 JAN 2021**  
Folly Beach, South Carolina

U.S. ARMY ENGINEER DISTRICT  
CORPS OF ENGINEERS  
CHARLESTON, SOUTH CAROLINA  
SPATIAL DATA BRANCH  
69A HAGOOD AVE  
CHARLESTON, SC 29403  
CESAC-GIS@USACE.ARMY.MIL

Designed By: <b>eHydro Software v3.82</b>	Survey Date: <b>22 JAN 2021</b>	Production Date: <b>29 JAN 2021</b>
Reviewed By: <b>CCW</b>	Absolute Scale: <b>1:5,430</b>	Project Reference Number: <b>CESAC-PRA-0009</b>
Reference Scale: <b>1 inch = 453 feet</b>	Survey Type: <b>CONDITION</b>	
Projection: <b>NAD 1983 StatePlane South Carolina FIPS 3900 Feet</b>		

**Shoalest Sounding**  
● Sounding  
Sounding may cover several point areas and is calculated per reach quarter area  
\*+ indicates sounding above MLLW

**USCG Beacon**  
■ Green  
▲ Red  
□ White

**USCG Buoy**  
● Green  
● Red  
● Coast Guard Racon

○ White  
○ Yellow  
○ USCG Light

**Depth in feet**

0-3	3 to 6	6 to 9	9 to 12	Greater Than 12
-----	--------	--------	---------	-----------------

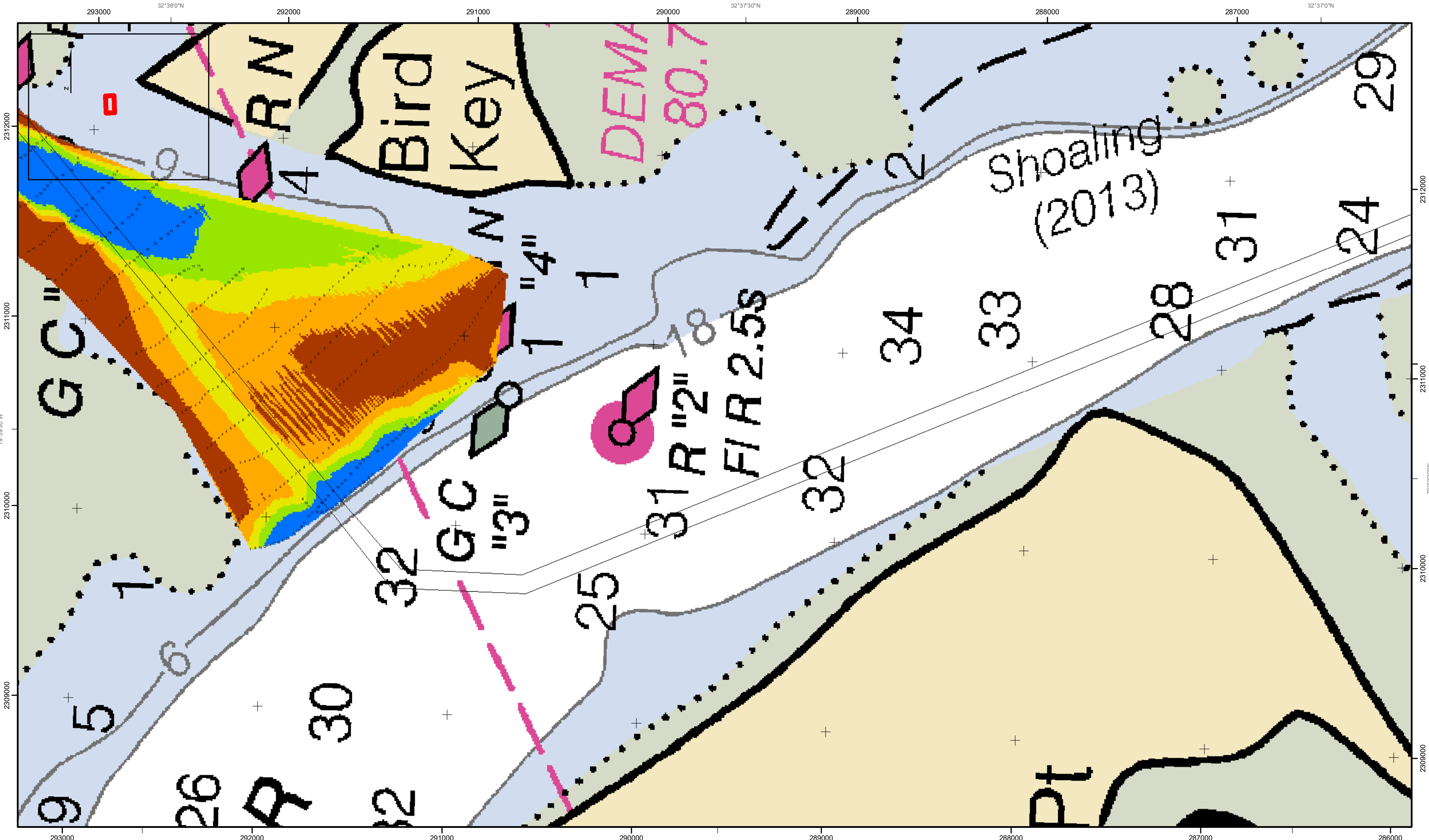
0 250 500 1,000 1,500 Feet



**Production Notes:**  
1. The information depicted on this product is for plotting purposes only.  
2. Vector hydrographic data derived from surveys conducted by the USACE and approved partners.  
3. Soundings are in feet and refer to Mean Lower Low Water (MLLW).  
4. Raster Background: PanSharpened Worldview-2 imagery dated 2014.

In no event shall the U.S. Army Corps of Engineers, Charleston District Office, Spatial Data Branch be liable for direct, indirect, incidental, consequential or special damages of any kind, including, but not limited to, loss of anticipated profits or benefits arising out of use of or reliance on the data.  
These data sets have been developed from the best available sources. Although efforts have been made to ensure that the datasets are accurate and reliable, errors and variable conditions originating from physical sources used to develop the data may be reflected in the data supplied.  
This product is not intended to be used for navigation.  
Mariners are encouraged to use all prudent safety measures.





**Folly River Channel**  
 The information depicted on this map represents the results of surveys made on the dates indicated and can only be considered as indicating the general conditions existing at that time.  
 Concluded on: **22 JAN 2021**  
 Folly Beach, South Carolina

U.S. ARMY ENGINEER DISTRICT  
 CORPS OF ENGINEERS  
 CHARLESTON, SOUTH CAROLINA  
 SPATIAL DATA BRANCH  
 69A HAGOOD AVE  
 CHARLESTON, SC 29403  
 CESAC-GIS@USACE.ARMY.MIL

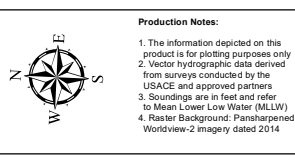
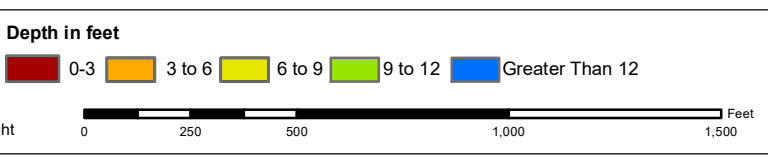
Designed By: <b>eHydro Software v3.82</b>	Survey Date: <b>22 JAN 2021</b>	Production Date: <b>29 JAN 2021</b>
Reviewed By: <b>CCW</b>	Absolute Scale: <b>1:5,430</b>	Project Reference Number: <b>CESAC-PRA-0009</b>
Reference Scale: <b>1 inch = 453 feet</b>	Survey Type: <b>CONDITION</b>	
Projection: <b>NAD 1983 StatePlane South Carolina FIPS 3900 Feet</b>		

**Shoalest Sounding**  
 ● Sounding  
*Sounding may cover several point areas and is calculated per reach quarter area*  
 \*+ indicates sounding above MLLW

**USCG Beacon**  
 ● Green  
 ▲ Red  
 □ White

**USCG Buoy**  
 ● Green  
 ● Red  
 ● Coast Guard Racon

**USCG Light**  
 ● White  
 ● Yellow



**Production Notes:**  
 1. The information depicted on this product is for plotting purposes only.  
 2. Vector hydrographic data derived from surveys conducted by the USACE and approved partners.  
 3. Soundings are in feet and refer to Mean Lower Low Water (MLLW).  
 4. Raster Background: Panharpened Worldview-2 imagery dated 2014.

In no event shall the U.S. Army Corps of Engineers, Charleston District Office, Spatial Data Branch be liable for direct, indirect, incidental, consequential or special damages of any kind, including, but not limited to, loss of anticipated profits or benefits arising out of use of or reliance on the data.  
 These data sets have been developed from the best available sources. Although efforts have been made to ensure that the datasets are accurate and reliable, errors and variable conditions originating from physical sources used to develop the data may be reflected in the data supplied.  
 This product is not intended to be used for navigation.  
 Mariners are encouraged to use all prudent safety measures.



293000 32°38'0"N 292000 291000 290000 289000 288000 287000 286000

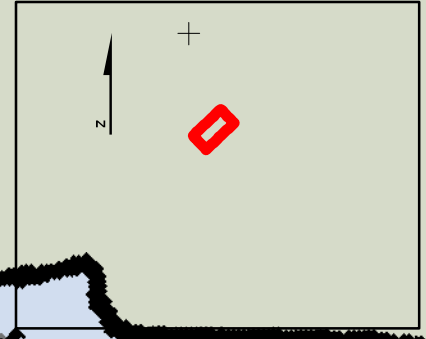
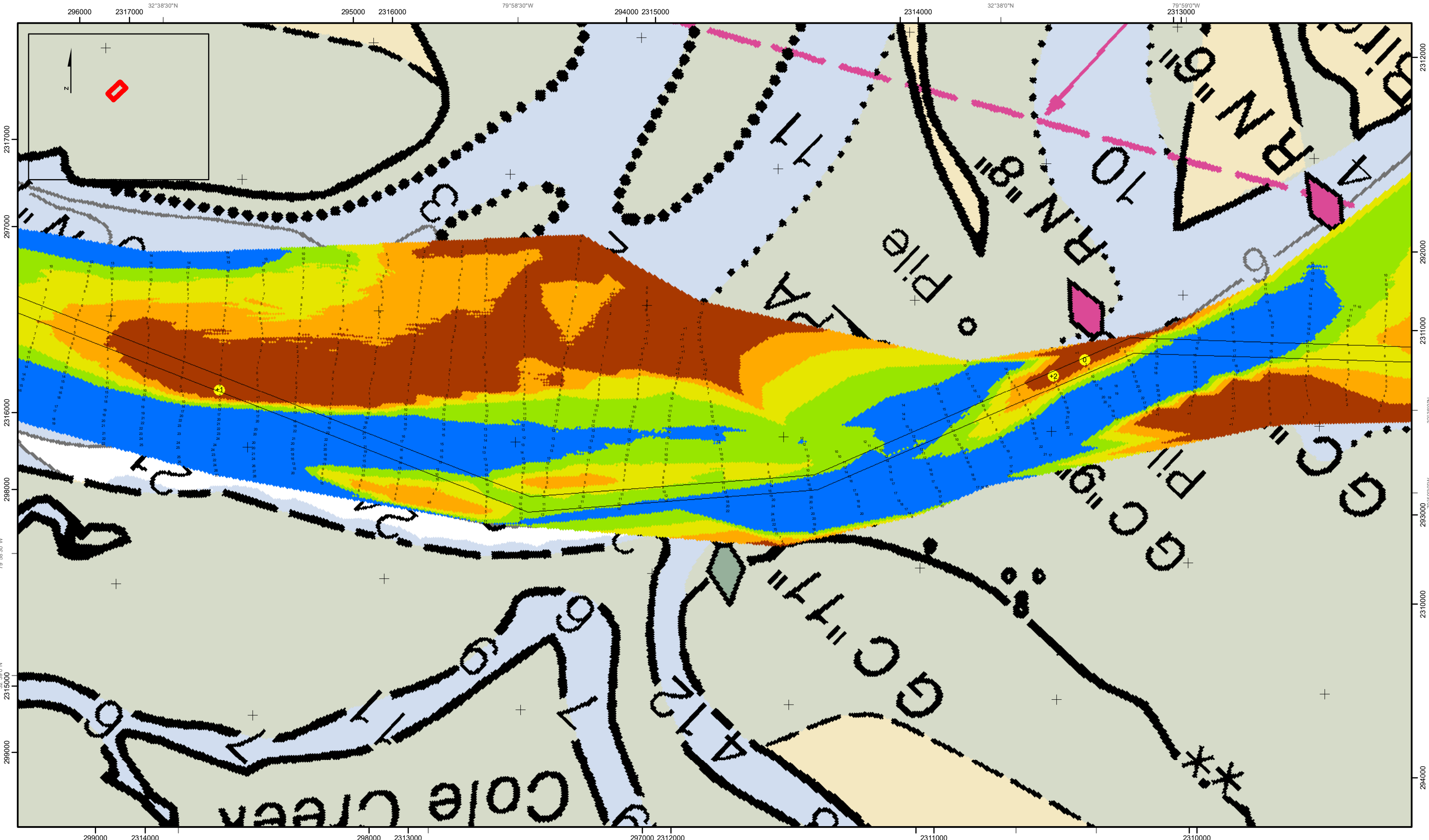
2312000 2311000 2310000 2309000

79°59'30"W

293000 32°38'0"N 292000 291000 290000 289000 288000 287000 286000

2312000 2311000 2310000 2309000

79°59'30"W



**Folly River Channel**  
 The information depicted on this map represents the results of surveys made on the dates indicated and can only be considered as indicating the general conditions existing at that time.  
 Concluded on: **22 JAN 2021**  
 Folly Beach, South Carolina

U.S. ARMY ENGINEER DISTRICT  
 CORPS OF ENGINEERS  
 CHARLESTON, SOUTH CAROLINA  
 SPATIAL DATA BRANCH  
 69A HAGOOD AVE.  
 CHARLESTON, SC 29403  
 CESAC-GIS@USACE.ARMY.MIL

Designed By: <b>eHydro Software v3.82</b>	Survey Date: <b>22 JAN 2021</b>	Production Date: <b>29 JAN 2021</b>
Reviewed By: <b>CCW</b>	Absolute Scale: <b>1:5,430</b>	Project Reference Number: <b>CESAC-PRA-0009</b>
Reference Scale: <b>1 inch = 453 feet</b>	Survey Type: <b>CONDITION</b>	
Projection: <b>NAD 1983 StatePlane South Carolina FIPS 3900 Feet</b>		

**Shoalest Sounding**  
 ● Sounding  
*Sounding may cover several point areas and is calculated per reach quarter area*  
 \* indicates sounding above MLLW

**USCG Beacon**  
 ■ Green  
 ▲ Red  
 □ White

**USCG Buoy**  
 ● Green  
 ● Red  
 ● Coast Guard Racon

**USCG Light**  
 ○ White  
 ○ Yellow

**Depth in feet**

0-3	3 to 6	6 to 9	9 to 12	Greater Than 12
-----	--------	--------	---------	-----------------

0 250 500 1,000 1,500 Feet

**Production Notes:**

- The information depicted on this product is for plotting purposes only.
- Vector hydrographic data derived from surveys conducted by the USACE and approved partners.
- Soundings are in feet and refer to Mean Lower Low Water (MLLW).
- Raster Background: PanSharpened Worldview-2 imagery dated 2014.

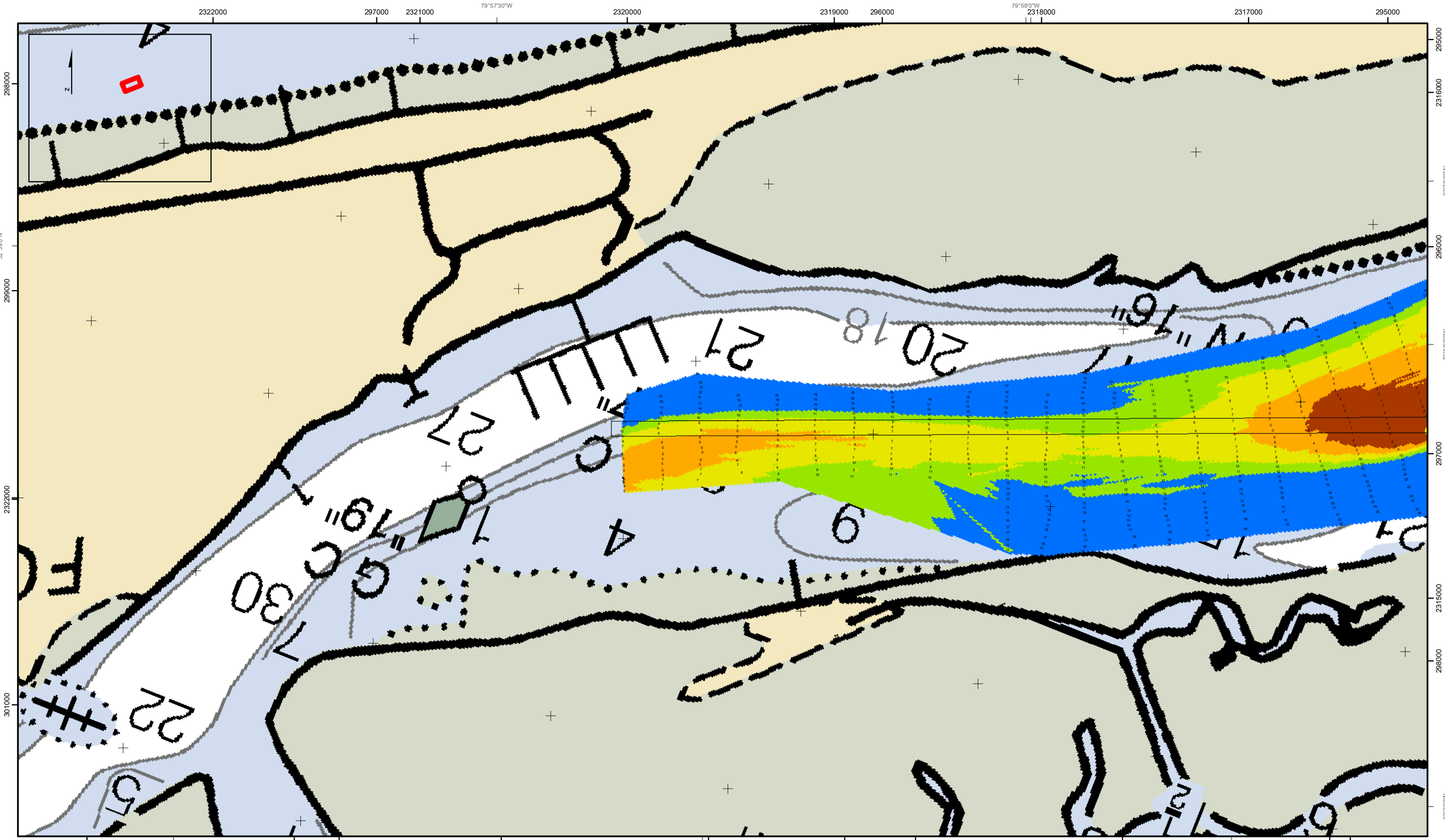
In no event shall the U.S. Army Corps of Engineers, Charleston District Office, Spatial Data Branch be liable for direct, indirect, incidental, consequential or special damages of any kind, including, but not limited to, loss of anticipated profits or benefits arising out of use of or reliance on the data.

These data sets have been developed from the best available sources. Although efforts have been made to ensure that the datasets are accurate and reliable, errors and variable conditions originating from physical sources used to develop the data may be reflected in the data supplied.

This product is not intended to be used for navigation.  
 Mariners are encouraged to use all prudent safety measures.







**Folly River Channel**  
 The information depicted on this map represents the results of surveys made on the dates indicated and can only be considered as indicating the general conditions existing at that time.  
 Concluded on: **22 JAN 2021**  
 Folly Beach, South Carolina

U.S. ARMY ENGINEER DISTRICT  
 CORPS OF ENGINEERS  
 CHARLESTON, SOUTH CAROLINA  
 SPATIAL DATA BRANCH  
 69A HAGOOD AVE.  
 CHARLESTON, SC 29403  
 CESAC-GIS@USACE.ARMY.MIL

Designed By: <b>eHydro Software v3.82</b>	Survey Date: <b>22 JAN 2021</b>	Production Date: <b>29 JAN 2021</b>
Reviewed By: <b>CCW</b>	Absolute Scale: <b>1:5,430</b>	Project Reference Number: <b>CESAC-PRA-0009</b>
Reference Scale: <b>1 inch = 453 feet</b>	Survey Type: <b>CONDITION</b>	
Projection: <b>NAD 1983 StatePlane South Carolina FIPS 3900 Feet</b>		

**Shoalest Sounding**  
 ● Sounding  
*Sounding may cover several point areas and is calculated per reach quarter area*  
 \*+ indicates sounding above MLLW

**USCG Beacon**  
 ■ Green  
 ▲ Red  
 □ White

**USCG Buoy**  
 ● Green  
 ● Red  
 ● Coast Guard Racon

**USCG Light**  
 ● White  
 ● Yellow

**Depth in feet**

0-3	3 to 6	6 to 9	9 to 12	Greater Than 12
-----	--------	--------	---------	-----------------

0 250 500 1,000 1,500 Feet

**Production Notes:**

- The information depicted on this product is for plotting purposes only.
- Vector hydrographic data derived from surveys conducted by the USACE and approved partners.
- Soundings are in feet and refer to Mean Lower Low Water (MLLW).
- Raster Background: PanSharpened WorldView-2 imagery dated 2014.

In no event shall the U.S. Army Corps of Engineers, Charleston District Office, Spatial Data Branch be liable for direct, indirect, incidental, consequential or special damages of any kind, including, but not limited to, loss of anticipated profits or benefits arising out of use of or reliance on the data.

These data sets have been developed from the best available sources. Although efforts have been made to ensure that the database are accurate and reliable, errors and variable conditions originating from physical sources used to develop the data may be reflected in the data supplied.

This product is not intended to be used for navigation.  
 Mariners are encouraged to use all prudent safety measures.



SHEET  
 REFERENCE  
 NUMBER  
**C014**  
 Page 5 of 5