

Folly River Channel
 The information depicted on this map represents the results of surveys made on the dates indicated and can only be considered as indicating the general conditions existing at that time.
 Concluded on: **4 APR 2023**
 Folly Beach, South Carolina

U.S. ARMY ENGINEER DISTRICT
 CORPS OF ENGINEERS
 CHARLESTON, SOUTH CAROLINA
 SPATIAL DATA BRANCH
 69A HAGOOD AVE
 CHARLESTON, SC 29403
 CESAC-GIS@USACE.ARMY.MIL

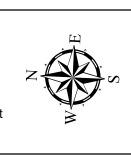
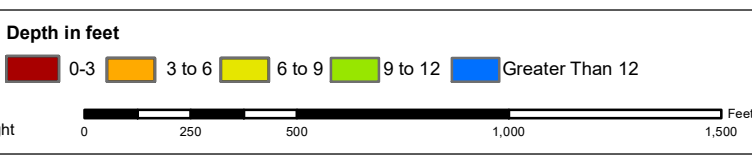
Designed By: eHydro Software v3.82	Survey Date: 4 APR 2023	Production Date: 15 MAY 2023
Reviewed By: CCW	Absolute Scale: 1:5,430	Project Reference Number: CESAC-PRA-0009
Reference Scale: 1 inch = 453 feet	Survey Type: CONTRACT	
Projection: NAD 1983 StatePlane South Carolina FIPS 3900 Feet		

Shoalest Sounding
 ● Sounding
Sounding may cover several point areas and is calculated per reach quarter area
 *+ indicates sounding above MLLW

USCG Beacon
 ■ Green
 ▲ Red
 □ White

USCG Buoy
 ● Green
 ● Red
 ● Coast Guard Racon

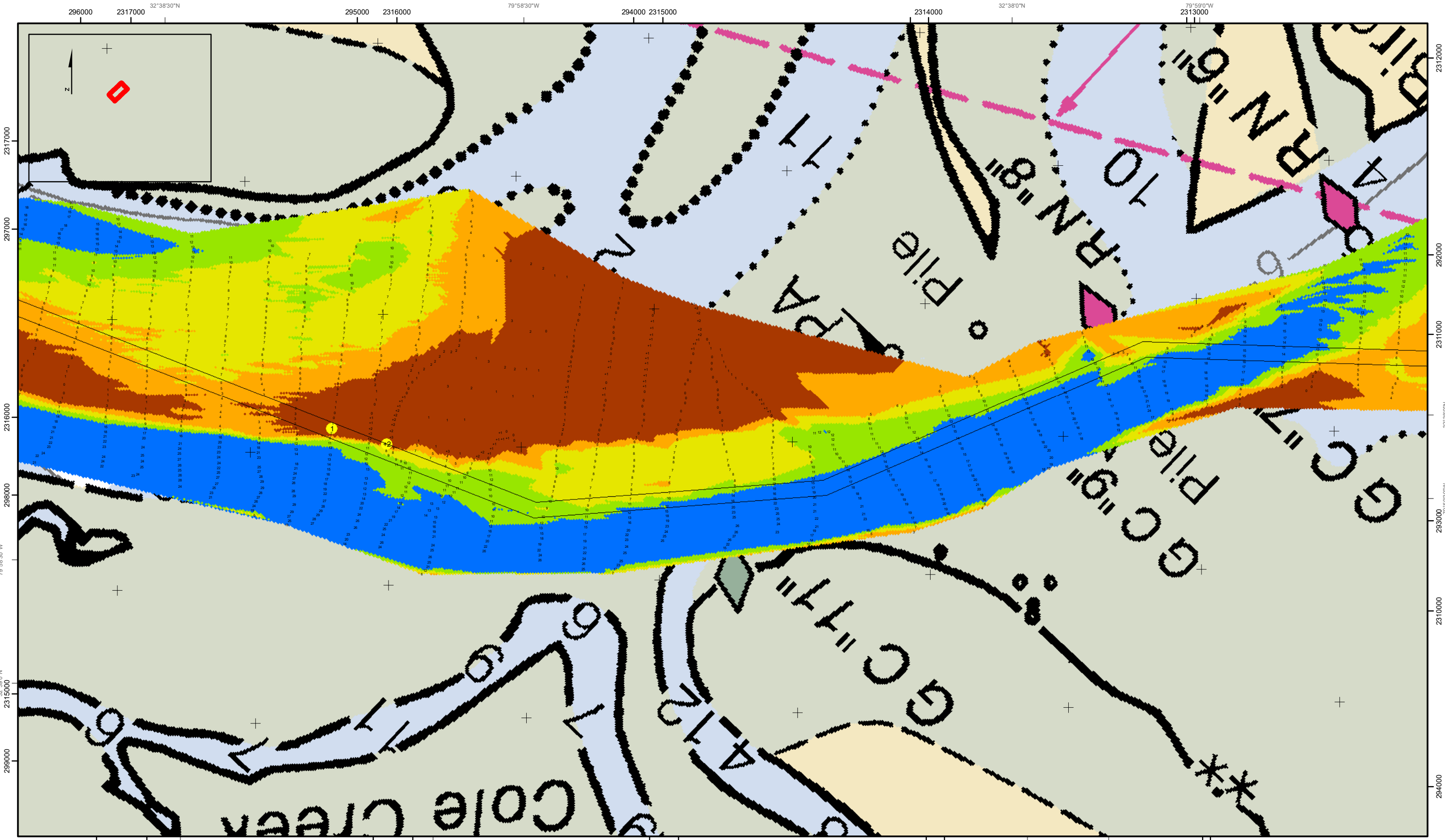
USCG Light
 ○ White
 ○ Yellow



Production Notes:
 1. The information depicted on this product is for plotting purposes only.
 2. Vector hydrographic data derived from surveys conducted by the USACE and approved partners.
 3. Soundings are in feet and refer to Mean Lower Low Water (MLLW).
 4. Raster Background: PanSharpened Worldview-2 imagery dated 2014.

In no event shall the U.S. Army Corps of Engineers, Charleston District Office, Spatial Data Branch be liable for direct, indirect, incidental, consequential or special damages of any kind, including, but not limited to, loss of anticipated profits or benefits arising out of use of or reliance on the data.
 These data sets have been developed from the best available sources. Although efforts have been made to ensure that the datasets are accurate and reliable, errors and variable conditions originating from physical sources used to develop the data may be reflected in the data supplied.
 This product is not intended to be used for navigation.
 Mariners are encouraged to use all prudent safety measures.





Folly River Channel
 The information depicted on this map represents the results of surveys made on the dates indicated and can only be considered as indicating the general conditions existing at that time.
 Concluded on: **4 APR 2023**
 Folly Beach, South Carolina

U.S. ARMY ENGINEER DISTRICT CORPS OF ENGINEERS CHARLESTON, SOUTH CAROLINA	Designed By: eHydro Software v3.82	Survey Date: 4 APR 2023	Production Date: 15 MAY 2023
SPATIAL DATA BRANCH 69A HAGOOD AVE. CHARLESTON, SC 29403 CESAC-GIS@USACE.ARMY.MIL	Reviewed By: CCW	Absolute Scale: 1:5,430	Project Reference Number: CESAC-PRA-0009
	Reference Scale: 1 inch = 453 feet	Survey Type: CONTRACT	
	Projection: NAD 1983 StatePlane South Carolina FIPS 3900 Feet		

Shoalest Sounding
 ● Sounding
Sounding may cover several point areas and is calculated per reach quarter area
 *+ indicates sounding above MLLW

USCG Beacon
 ● Green
 ▲ Red
 □ White

USCG Buoy
 ● Green
 ● Red
 ● Coast Guard Racon

USCG Light
 ● White
 ● Yellow

Depth in feet
 ● 0-3
 ● 3 to 6
 ● 6 to 9
 ● 9 to 12
 ● Greater Than 12

0 250 500 1,000 1,500 Feet

Production Notes:

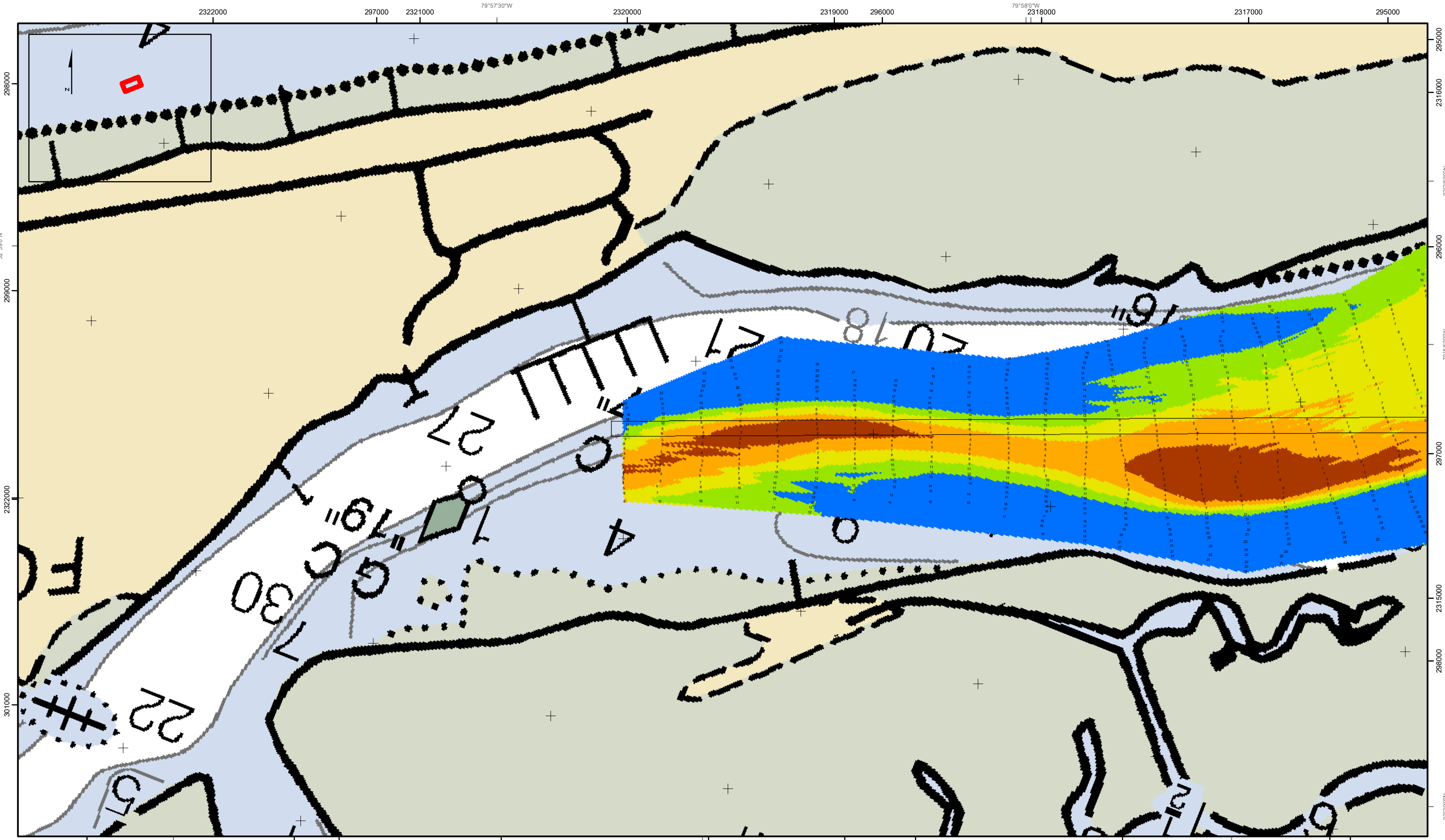
- The information depicted on this product is for plotting purposes only.
- Vector hydrographic data derived from surveys conducted by the USACE and approved partners.
- Soundings are in feet and refer to Mean Lower Low Water (MLLW).
- Raster Background: Panharperned Worldview-2 imagery dated 2014.

In no event shall the U.S. Army Corps of Engineers, Charleston District Office, Spatial Data Branch be liable for direct, indirect, incidental, consequential or special damages of any kind, including, but not limited to, loss of anticipated profits or benefits arising out of use of or reliance on the data.

These data sets have been developed from the best available sources. Although efforts have been made to ensure that the datasets are accurate and reliable, errors and variable conditions originating from physical sources used to develop the data may be reflected in the data supplied.

This product is not intended to be used for navigation.
 Mariners are encouraged to use all prudent safety measures.

U.S. Army Corps of Engineers
 Charleston District



Folly River Channel
 The information depicted on this map represents the results of surveys made on the dates indicated and can only be considered as indicating the general conditions existing at that time.
 Concluded on: **4 APR 2023**
 Folly Beach, South Carolina

U.S. ARMY ENGINEER DISTRICT
 CORPS OF ENGINEERS
 CHARLESTON, SOUTH CAROLINA
 SPATIAL DATA BRANCH
 69A HAGOOD AVE.
 CHARLESTON, SC 29403
 CESAC-GIS@USACE.ARMY.MIL

Designed By: eHydro Software v3.82	Survey Date: 4 APR 2023	Production Date: 15 MAY 2023
Reviewed By: CCW	Absolute Scale: 1:5,430	Project Reference Number: CESAC-PRA-0009
Reference Scale: 1 inch = 453 feet	Survey Type: CONTRACT	
Projection: NAD 1983 StatePlane South Carolina FIPS 3900 Feet		

Shoalest Sounding
 Sounding may cover several point areas and is calculated per reach quarter area
 "*" indicates sounding above MLLW

USCG Beacon
 Green
 Red
 White

USCG Buoy
 Green
 Red
 Coast Guard Racon

USCG Light
 White
 Yellow
 USCG Light

Depth in feet

0-3	3 to 6	6 to 9	9 to 12	Greater Than 12
-----	--------	--------	---------	-----------------

0 250 500 1,000 1,500 Feet

Production Notes:

- The information depicted on this product is for plotting purposes only.
- Vector hydrographic data derived from surveys conducted by the USACE and approved partners.
- Soundings are in feet and refer to Mean Lower Low Water (MLLW).
- Raster Background: PanSharpened Worldview-2 imagery dated 2014.

In no event shall the U.S. Army Corps of Engineers, Charleston District Office, Spatial Data Branch be liable for direct, indirect, incidental, consequential or special damages of any kind, including, but not limited to, loss of anticipated profits or benefits arising out of use of or reliance on the data.

These data sets have been developed from the best available sources. Although efforts have been made to ensure that the database are accurate and reliable, errors and variable conditions originating from physical sources used to develop the data may be reflected in the data supplied.

This product is not intended to be used for navigation.
 Mariners are encouraged to use all prudent safety measures.

