

Folly River Channel
 The information depicted on this map represents the results of surveys made on the dates indicated and can only be considered as indicating the general conditions existing at that time.
 Concluded on: **3 OCT 2023**
 Folly Beach, South Carolina

U.S. ARMY ENGINEER DISTRICT
 CORPS OF ENGINEERS
 CHARLESTON, SOUTH CAROLINA
 SPATIAL DATA BRANCH
 69A HAGOOD AVE
 CHARLESTON, SC 29403
 CESAC-GIS@USACE.ARMY.MIL

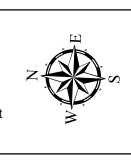
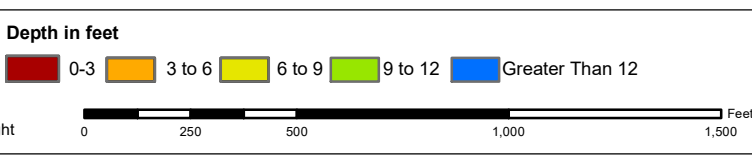
| | | |
|---|------------------------------------|--|
| Designed By: eHydro Software v3.82 | Survey Date: 03 OCT 2023 | Production Date: 12 OCT 2023 |
| Reviewed By: CCW | Absolute Scale: 1:5,430 | Project Reference Number: CESAC-PRA-0009 |
| Reference Scale: 1 inch = 453 feet | Survey Type: CONDITION | |
| Projection: NAD 1983 StatePlane South Carolina FIPS 3900 Feet | | |

Shoalest Sounding
 Sounding may cover several point areas and is calculated per reach quarter area
 "+" indicates sounding above MLLW

USCG Beacon
 Green
 Red
 White

USCG Buoy
 Green
 Red
 Coast Guard Racon

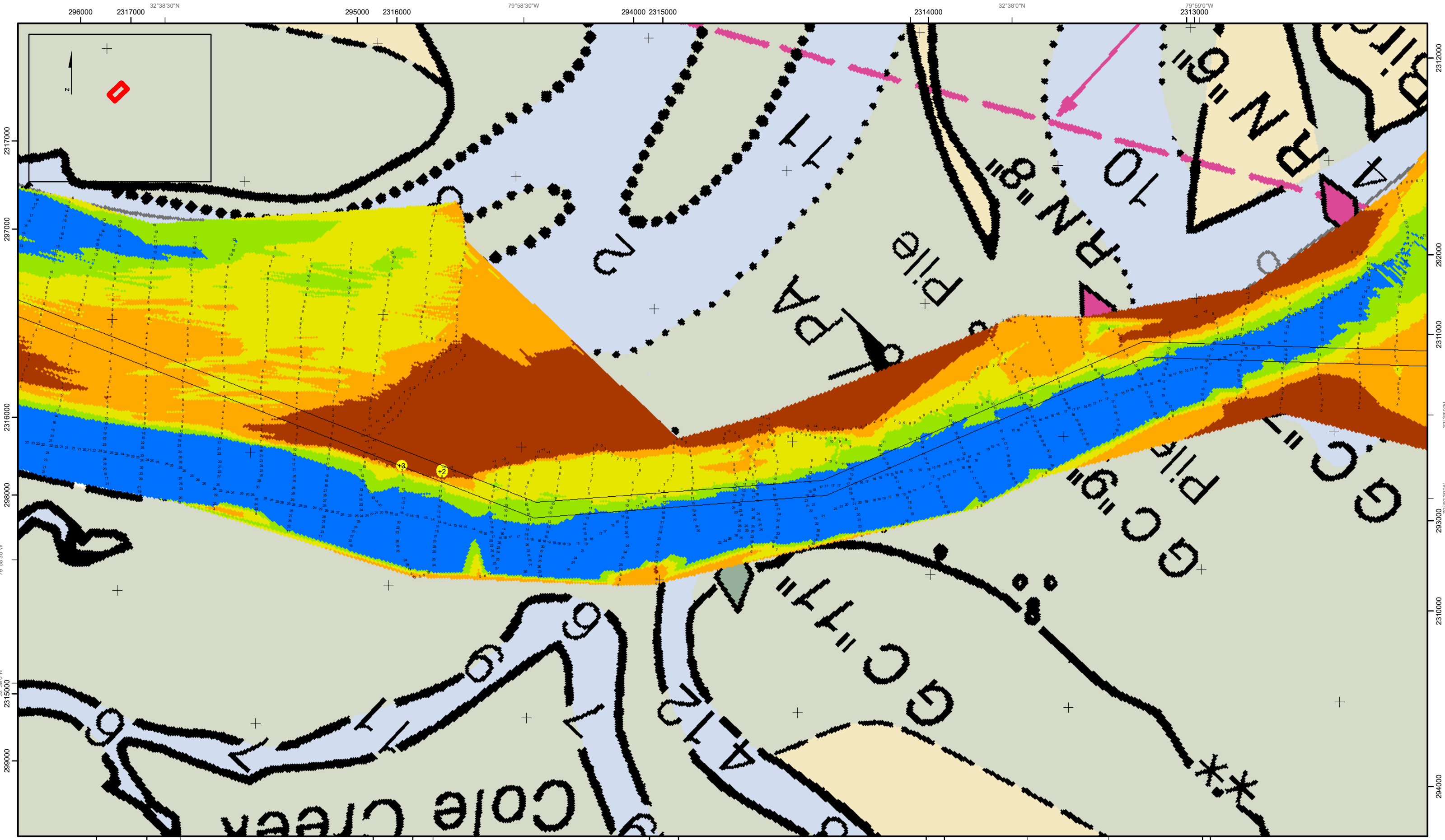
USCG Light
 White
 Yellow



Production Notes:
 1. The information depicted on this product is for plotting purposes only.
 2. Vector hydrographic data derived from surveys conducted by the USACE and approved partners.
 3. Soundings are in feet and refer to Mean Lower Low Water (MLLW).
 4. Raster Background: Panshapened Worldview-2 imagery dated 2014.

In no event shall the U.S. Army Corps of Engineers, Charleston District Office, Spatial Data Branch be liable for direct, indirect, incidental, consequential or special damages of any kind, including, but not limited to, loss of anticipated profits or benefits arising out of use of or reliance on the data.
 These data sets have been developed from the best available sources. Although efforts have been made to ensure that the datasets are accurate and reliable, errors and variable conditions originating from physical sources used to develop the data may be reflected in the data supplied.
 This product is not intended to be used for navigation.
 Mariners are encouraged to use all prudent safety measures.





Folly River Channel
 The information depicted on this map represents the results of surveys made on the dates indicated and can only be considered as indicating the general conditions existing at that time.
 Concluded on: **3 OCT 2023**
 Folly Beach, South Carolina

U.S. ARMY ENGINEER DISTRICT
 CORPS OF ENGINEERS
 CHARLESTON, SOUTH CAROLINA
 SPATIAL DATA BRANCH
 69A HAGOOD AVE
 CHARLESTON, SC 29403
 CESAC-GIS@USACE.ARMY.MIL

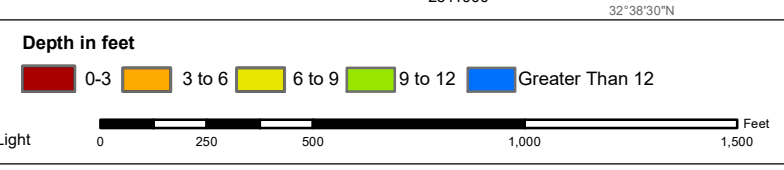
| | | |
|---|------------------------------------|--|
| Designed By: eHydro Software v3.8.2 | Survey Date: 03 OCT 2023 | Production Date: 12 OCT 2023 |
| Reviewed By: CCW | Absolute Scale: 1:5,430 | Project Reference Number: CESAC-PRA-0009 |
| Reference Scale: 1 inch = 453 feet | Survey Type: CONDITION | |
| Projection: NAD 1983 StatePlane South Carolina FIPS 3900 Feet | | |

Shoalest Sounding
 ● Sounding
Sounding may cover several point areas and is calculated per reach quarter area
 *+ indicates sounding above MLLW

USCG Beacon
 ■ Green
 ▲ White

USCG Buoy
 ● Green
 ● Red
 ● Coast Guard Racon

USCG Light
 ○ White
 ○ Yellow



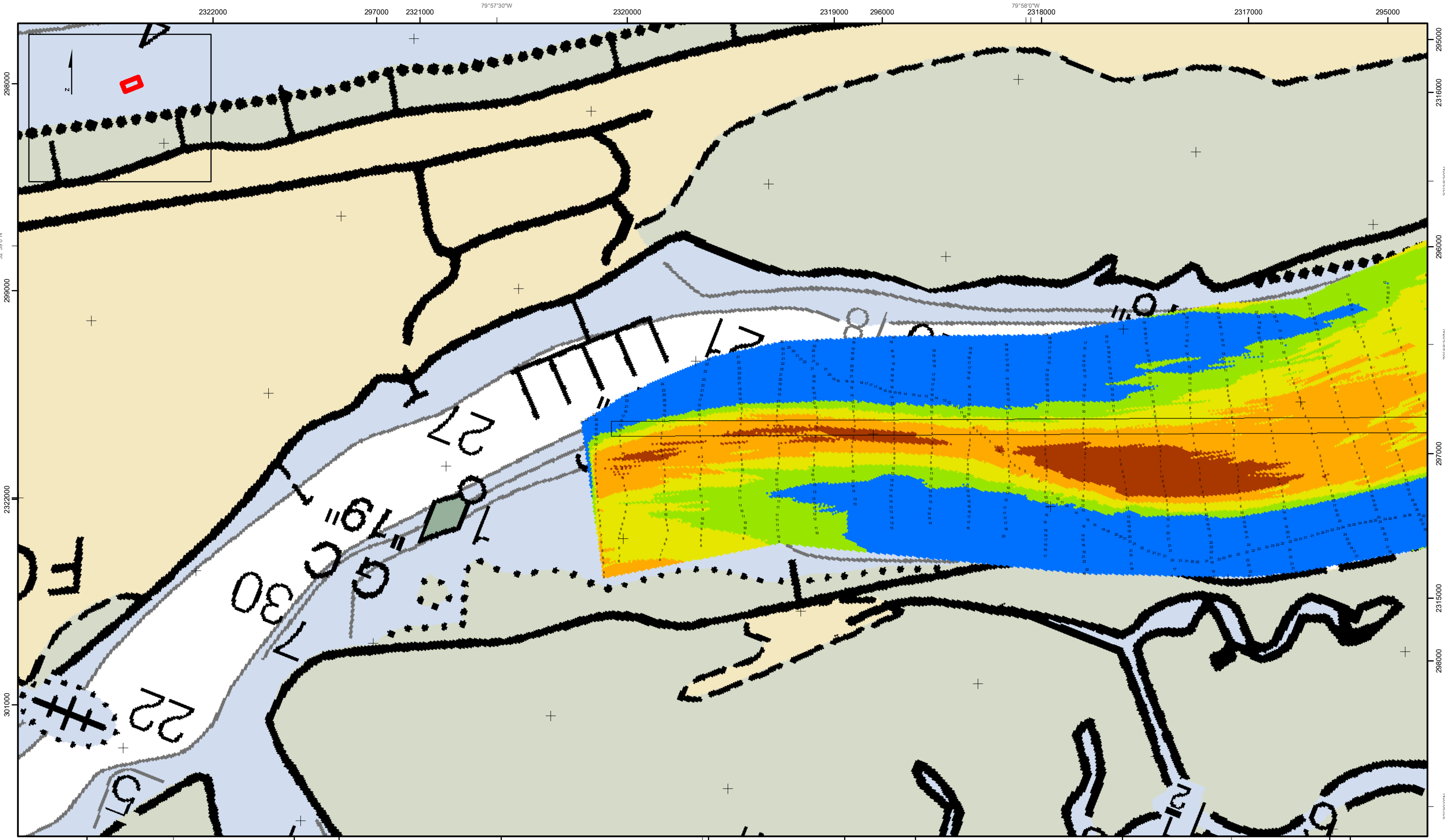
Production Notes:

- The information depicted on this product is for plotting purposes only.
- Vector hydrographic data derived from surveys conducted by the USACE and approved partners.
- Soundings are in feet and refer to Mean Lower Low Water (MLLW).
- Raster Background: Pansharpened WorldView-2 imagery dated 2014.

In no event shall the U.S. Army Corps of Engineers, Charleston District Office, Spatial Data Branch be liable for direct, indirect, incidental, consequential or special damages of any kind, including, but not limited to, loss of anticipated profits or benefits arising out of use of or reliance on the data.

These data sets have been developed from the best available sources. Although efforts have been made to ensure that the datasets are accurate and reliable, errors and variable conditions originating from physical sources used to develop the data may be reflected in the data supplied.

This product is not intended to be used for navigation. Mariners are encouraged to use all prudent safety measures.



Folly River Channel
 The information depicted on this map represents the results of surveys made on the dates indicated and can only be considered as indicating the general conditions existing at that time.
 Concluded on: **3 OCT 2023**
 Folly Beach, South Carolina

U.S. ARMY ENGINEER DISTRICT
 CORPS OF ENGINEERS
 CHARLESTON, SOUTH CAROLINA
 SPATIAL DATA BRANCH
 69A HAGOOD AVE
 CHARLESTON, SC 29403
 CESAC-GIS@USACE.ARMY.MIL

| | | |
|---|------------------------------------|--|
| Designed By: eHydro Software v3.82 | Survey Date: 03 OCT 2023 | Production Date: 12 OCT 2023 |
| Reviewed By: CCW | Absolute Scale: 1:5,430 | Project Reference Number: CESAC-PRA-0009 |
| Reference Scale: 1 inch = 453 feet | Survey Type: CONDITION | |
| Projection: NAD 1983 StatePlane South Carolina FIPS 3900 Feet | | |

Shoalest Sounding
 Sounding may cover several point areas and is calculated per reach quarter area
 "+" indicates sounding above MLLW

USCG Beacon
 Green Triangle
 Red Triangle
 White Triangle

USCG Buoy
 Green Circle
 Red Circle
 Coast Guard Racon

USCG Light
 White
 Yellow
 USCG Light

Depth in feet

| | | | | |
|-----|--------|--------|---------|-----------------|
| 0-3 | 3 to 6 | 6 to 9 | 9 to 12 | Greater Than 12 |
|-----|--------|--------|---------|-----------------|

0 250 500 1,000 1,500 Feet

Production Notes:

- The information depicted on this product is for plotting purposes only.
- Vector hydrographic data derived from surveys conducted by the USACE and approved partners.
- Soundings are in feet and refer to Mean Lower Low Water (MLLW).
- Raster Background: Pansharpened Worldview-2 imagery dated 2014.

In no event shall the U.S. Army Corps of Engineers, Charleston District Office, Spatial Data Branch be liable for direct, indirect, incidental, consequential or special damages of any kind, including, but not limited to, loss of anticipated profits or benefits arising out of use of or reliance on the data.

These data sets have been developed from the best available sources. Although efforts have been made to ensure that the datasets are accurate and reliable, errors and variable conditions originating from physical sources used to develop the data may be reflected in the data supplied.

This product is not intended to be used for navigation. Mariners are encouraged to use all prudent safety measures.



SHEET NUMBER
 C014
 Page 5 of 5