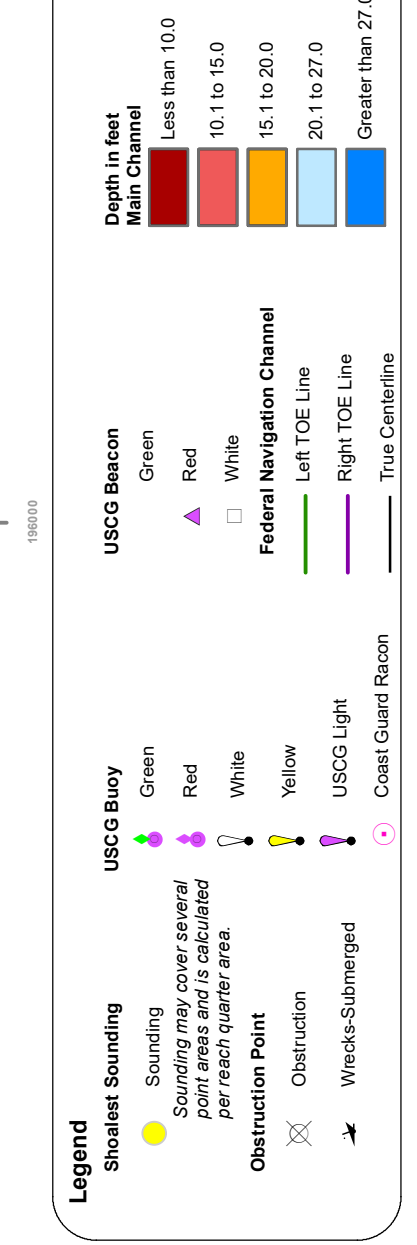
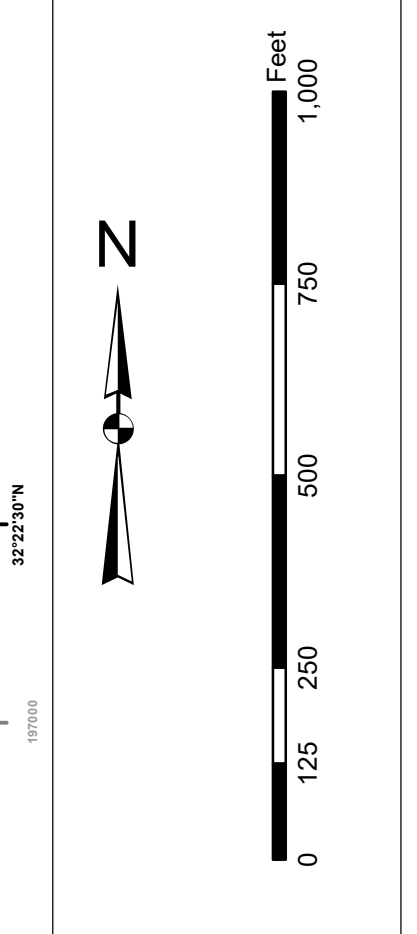


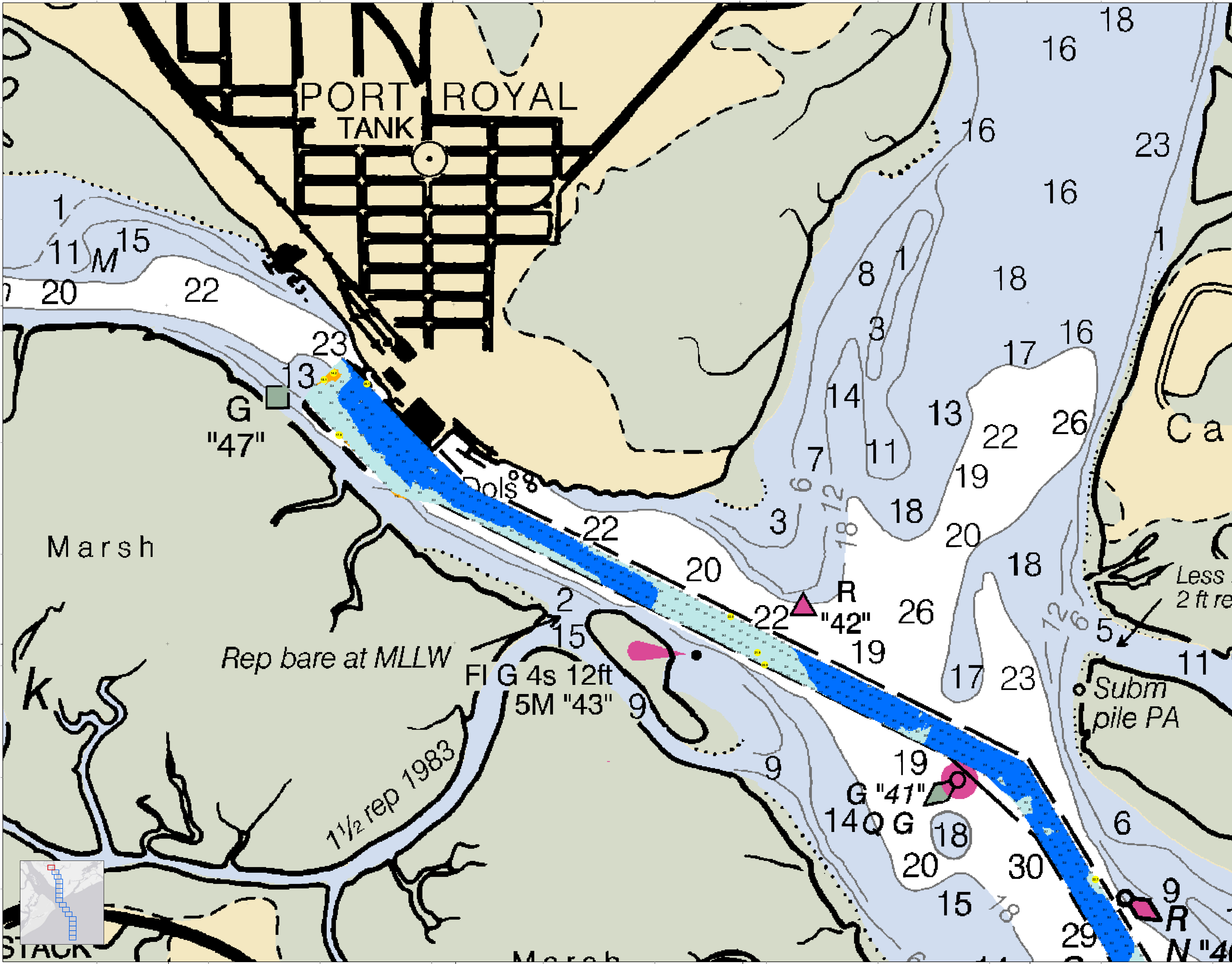
In accordance with U.S. Army Corps of Engineers, Charleston District Office, Navigation Rules for Inland Waterways, Section 102.10, the following information is provided to assist in the safe navigation of the waterway. This information is based on the latest available data and is subject to change without notice. Users are encouraged to use all prudent safety practices.

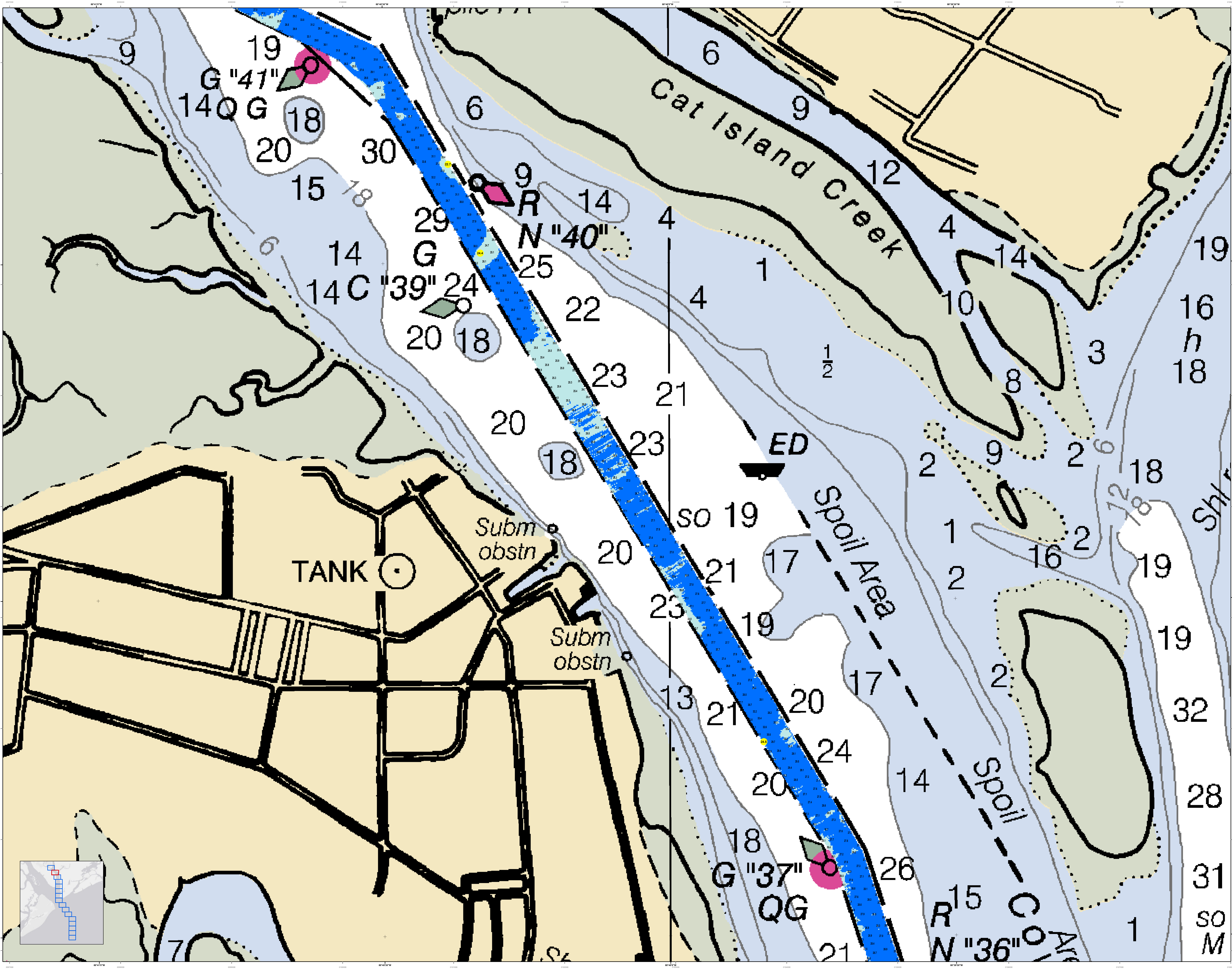
**Production Notes:**  
1. This map is a preliminary survey.  
2. The data was collected using a GNSS receiver and a depth sounder.  
3. The data was processed using a least squares adjustment.  
4. The data was plotted on a grid with a 10-foot interval.  
5. The data was checked for accuracy and consistency.  
6. The data was approved for publication by the District Engineer.  
7. The data was approved for publication by the District Engineer.



Designed By:	Survey Date:	Production Date:
Hydro Software v3.82	31 AUG 2021	09 SEP 2021
Reviewed By:	Project Reference Number:	
1:10,000	PC00010	
Revised Date:	Survey Date:	
1 inch = 250 feet	CONDITON	
Projection:	NAD 1983 StatePlane South Carolina FIPS 3800 Feet	
U.S. Army Corps of Engineers CHARLESTON DISTRICT 800 W. BROADWAY CHARLESTON, SC 29405 843-328-8000		

**Port Royal Harbor Channel Survey**  
The information depicted on this map represents the results of surveys made on the dates indicated and can only be considered as indicating the general character of the channel. It is not intended for navigation. Concluded on: 31 AUG 2021  
Port Royal, South Carolina





U.S. Army Corps of Engineers  
Charleston District

Production Date: 09 SEP 2021  
Survey Date: 31 AUG 2021  
Project Reference Number: 1903001D  
Survey System: CONDOTION  
Scale: 1 inch = 250 feet  
Projection: NAD 1983 StatePlane South Carolina FIPS 3800 Feet

Designed By: Jethro Software v3.82  
Reviewed By: Jethro Software v3.82  
Scale: 1:2500  
Scale: 1 inch = 250 feet  
Projection: NAD 1983 StatePlane South Carolina FIPS 3800 Feet

U.S. Army Corps of Engineers  
Charleston District  
USACE CHARLESTON  
80A HARGOOD AVE  
CHARLESTON, SC 29405  
843-328-8000

Port Royal Harbor Channel Survey  
The information depicted on this map represents the results of surveys made on the dates indicated and can only be considered as indicating the general character of the bottom.

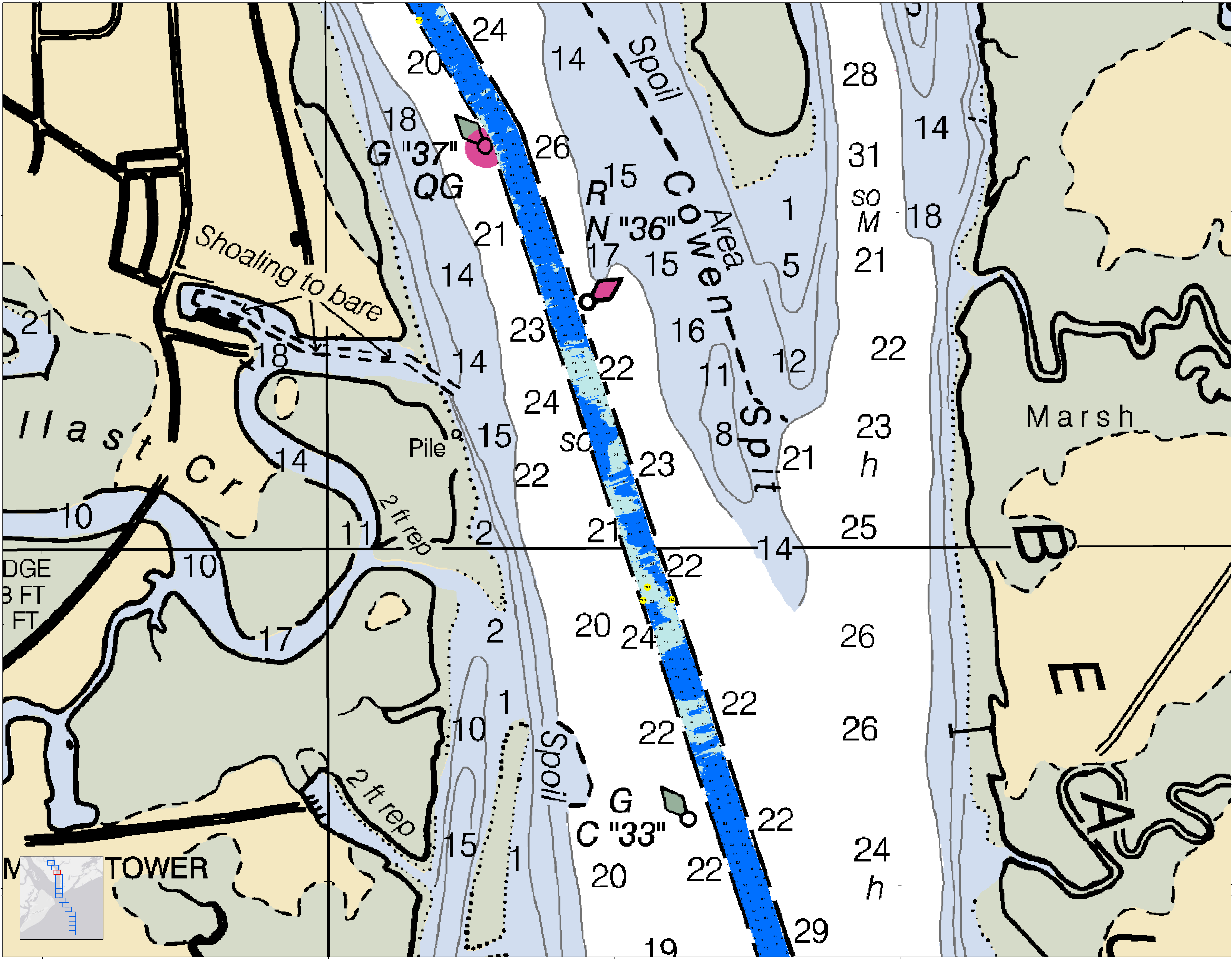
Concluded on: 31 AUG 2021  
Port Royal, South Carolina

SHEET REFERENCE NUMBER  
C012  
SHEET 15 OF 16

Legend:  
Soundings: 18 to 20, 21 to 23, 24 to 26, 28 to 32  
Obstructions: Subm obstr, ED  
Spoil Area: Spoil Area  
Channel: Channel  
Depth Contours: 1, 2, 3, 4, 6, 9, 10, 12, 14, 15, 16, 17, 18, 19, 20, 21, 22, 23, 24, 25, 26, 28, 30, 31, 32

Scale: 0 125 250 500 750 1000 Feet

North Arrow



U.S. Army Corps of Engineers  
Charleston District

In accordance with the U.S. Army Corps of Engineers, Charleston District Office, Navigation Channel Survey, the information on this map represents the results of surveys made on the dates indicated and can only be considered as indicating the general character of the channel. It is not intended to be used for navigation. Mariners are encouraged to use all prudent safety practices.

Production Date: 09 SEP 2021  
 Survey Date: 31 AUG 2021  
 Project Reference Number: PRC00010  
 Survey Station: PRC00010  
 Condition: CONDITION

Designed By: Jethro Software v3.82  
 Reviewed By: Absolute Scale  
 Horizontal Scale: 1:50,000  
 Vertical Scale: 1 inch = 250 feet  
 Projection: NAD 1983 StatePlane South Carolina FIPS 3800 Feet

U.S. Army Corps of Engineers  
 Charleston District Office  
 600 Broad Street  
 Charleston, SC 29405  
 843-325-8000

**Port Royal Harbor Channel Survey**  
 The information depicted on this map represents the results of surveys made on the dates indicated and can only be considered as indicating the general character of the channel.  
 Concluded on: 31 AUG 2021  
 Port Royal, South Carolina

SHEET REFERENCE NUMBER  
 C012  
 SHEET 14 OF 16

**Legend**

- Depth Contours: 1, 5, 10, 15, 20, 25, 30, 31
- Navigation Channel: 100, 200, 300, 400, 500, 600, 700, 800, 900, 1000
- Shoaling to Bare: Dotted line
- Spill: Dashed line
- 2 ft rep: Dotted line
- Pile: Dotted line
- Navigation Marker: Red buoy, Green buoy
- Marsh: Dotted line
- Tower: Dotted line

**Scale**

0 125 250 500 750 1000

0 125 250 500 750 1000

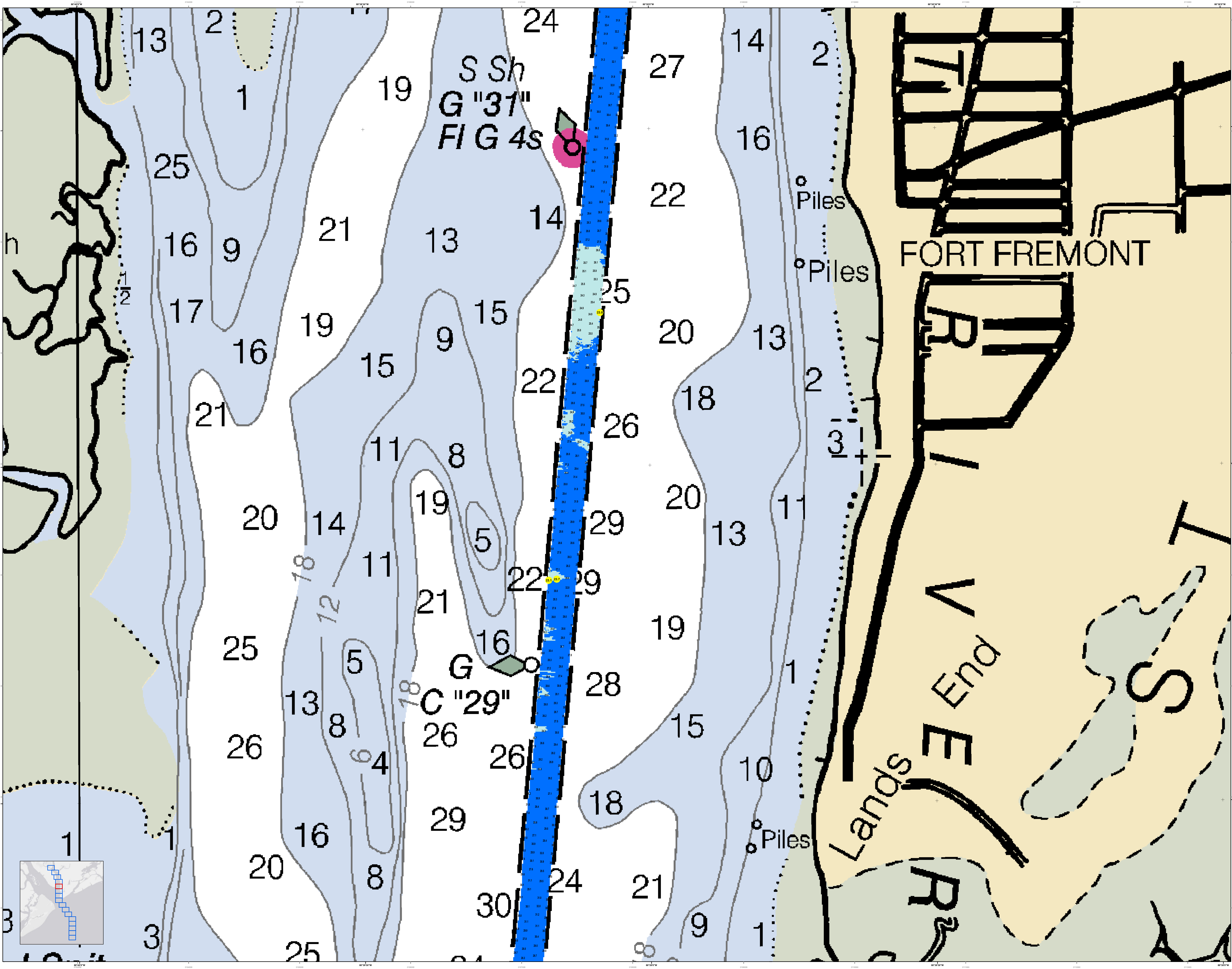
**Color Key**

- Red: Spoil
- Blue: Navigation Channel
- Green: Marsh
- Yellow: Tower

**North Arrow**

N





U.S. Army Corps of Engineers  
Charleston District

Production Notes:  
1. This is a preliminary chart.  
2. This chart is not to be used for navigation purposes.  
3. Charting is not to be used for navigation purposes.  
4. Charting is not to be used for navigation purposes.  
5. Charting is not to be used for navigation purposes.  
6. Charting is not to be used for navigation purposes.  
7. Charting is not to be used for navigation purposes.  
8. Charting is not to be used for navigation purposes.  
9. Charting is not to be used for navigation purposes.  
10. Charting is not to be used for navigation purposes.

Legend:  
 - Soundings: 1 to 30  
 - Depth Contours: 1, 2, 3, 4, 5, 6, 8, 9, 10, 11, 12, 13, 14, 15, 16, 17, 18, 19, 20, 21, 22, 24, 25, 26, 28, 29, 30  
 - Navigation Aids: Pink buoy (S Sh G "31" FIG 4s), Green buoy (G "29")  
 - Piles: Piles  
 - Lands: Lands  
 - Fort Fremont: Fort Fremont  
 - V End: V End  
 - R: R

Scale: 1 inch = 250 feet  
 Projection: NAD 1983 StatePlane South Carolina FIPS 3800 Feet

Designed By: [Name]  
 Reviewed By: [Name]  
 Checked By: [Name]  
 Approved By: [Name]

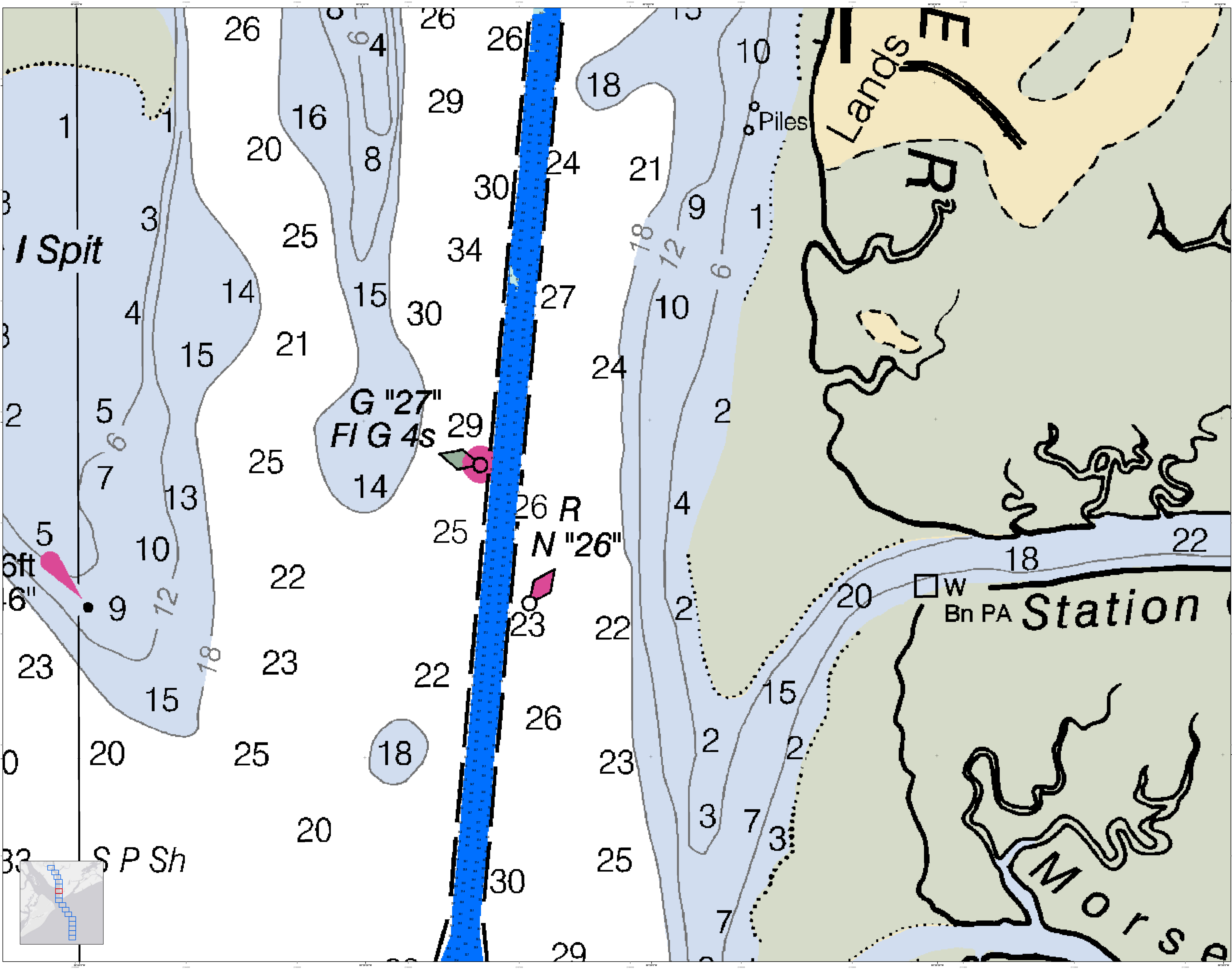
Survey Date: 31 AUG 2021  
 Production Date: 09 SEP 2021  
 Project Reference Number: [Number]  
 Survey Station: [Station]  
 Condition: [Condition]

U.S. Army Corps of Engineers  
 Charleston District  
 843-325-8000

Port Royal Harbor Channel Survey  
 The information depicted on this map represents the results of surveys made on the dates indicated and can only be considered as indicating the general character of the bottom.

Concluded on: 31 AUG 2021  
 Port Royal, South Carolina

SHEET REFERENCE NUMBER  
 C012  
 SHEET 12 OF 16



U.S. Army Corps of Engineers  
Charleston District

**Port Royal Harbor Channel Survey**  
The information depicted on this map represents the results of surveys made on the dates indicated and can only be considered as indicating the general character of the bottom.

Concluded on: **31 AUG 2021**  
Port Royal, South Carolina

Produced by: **31 AUG 2021 09 SEP 2021**  
Project Reference Number: **PC00010**  
Survey Station: **CONDITION**

Designed By: **Hydro Software v3.82**  
Reviewed By: **ABSOLUTE SCALE**  
Horizontal Scale: **1" = 10,000'**  
Vertical Scale: **1" = 250'**  
Projection: **NAD 1983 StatePlane South Carolina FIPS 3800 Feet**

U.S. Army Corps of Engineers  
Charleston District  
843-328-8000

**Legend**

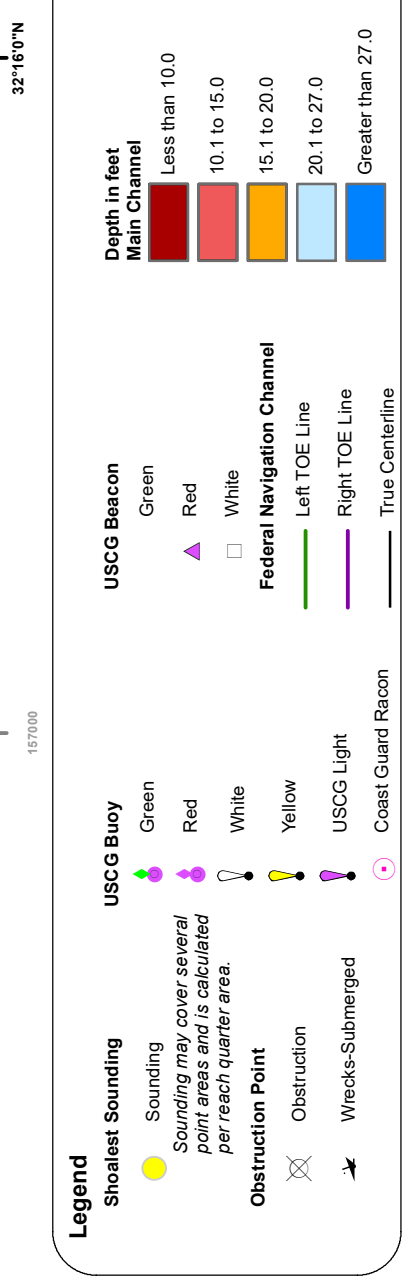
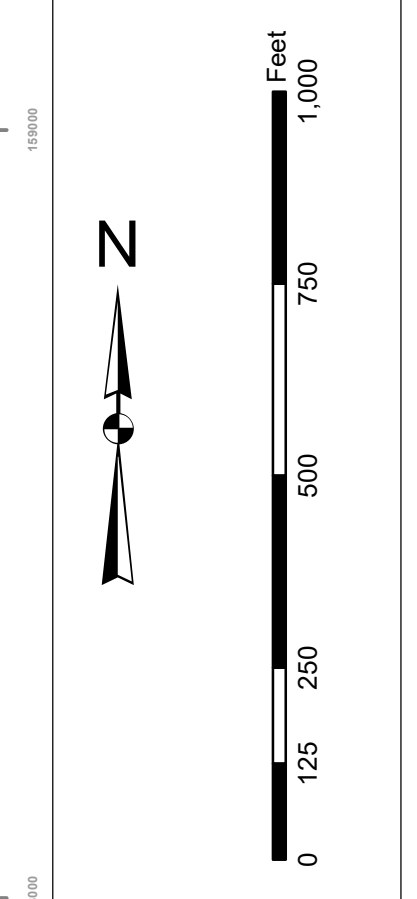
- Depth Contours: 1 to 30 feet
- Navigation Aids: Buoy, Light, Station
- Landmarks: I Spit, G'27', FIG 4s, Piles, Lands, MORIS
- Other: W Bn PA Station

Scale: 0 125 250 500 750 1000 Feet

North Arrow

In accordance with the U.S. Army Corps of Engineers, Charleston District Office, Navigation Channel Survey, Channel Survey Manual, Section 1.1, the information on this map represents the results of surveys made on the dates indicated and can only be considered as indicating the general character of the channel. It is not intended to be used for navigation. Mariners are encouraged to use all prudent safety practices.

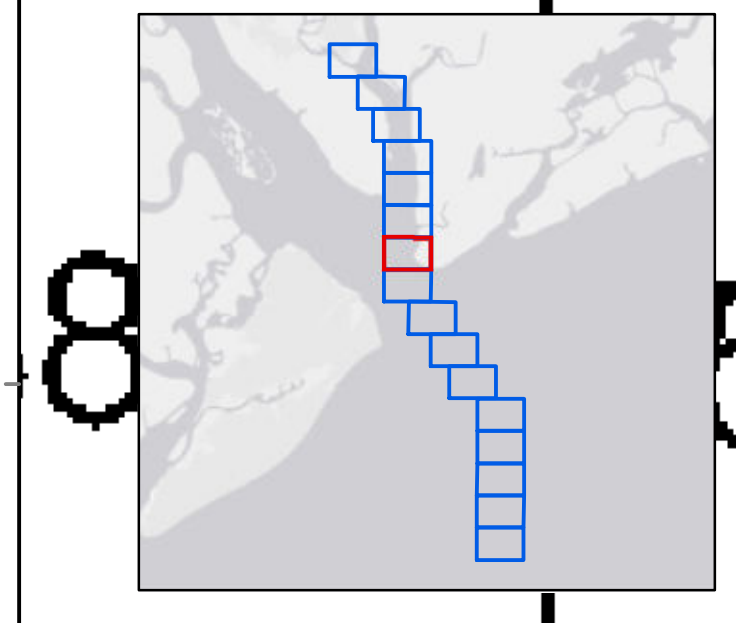
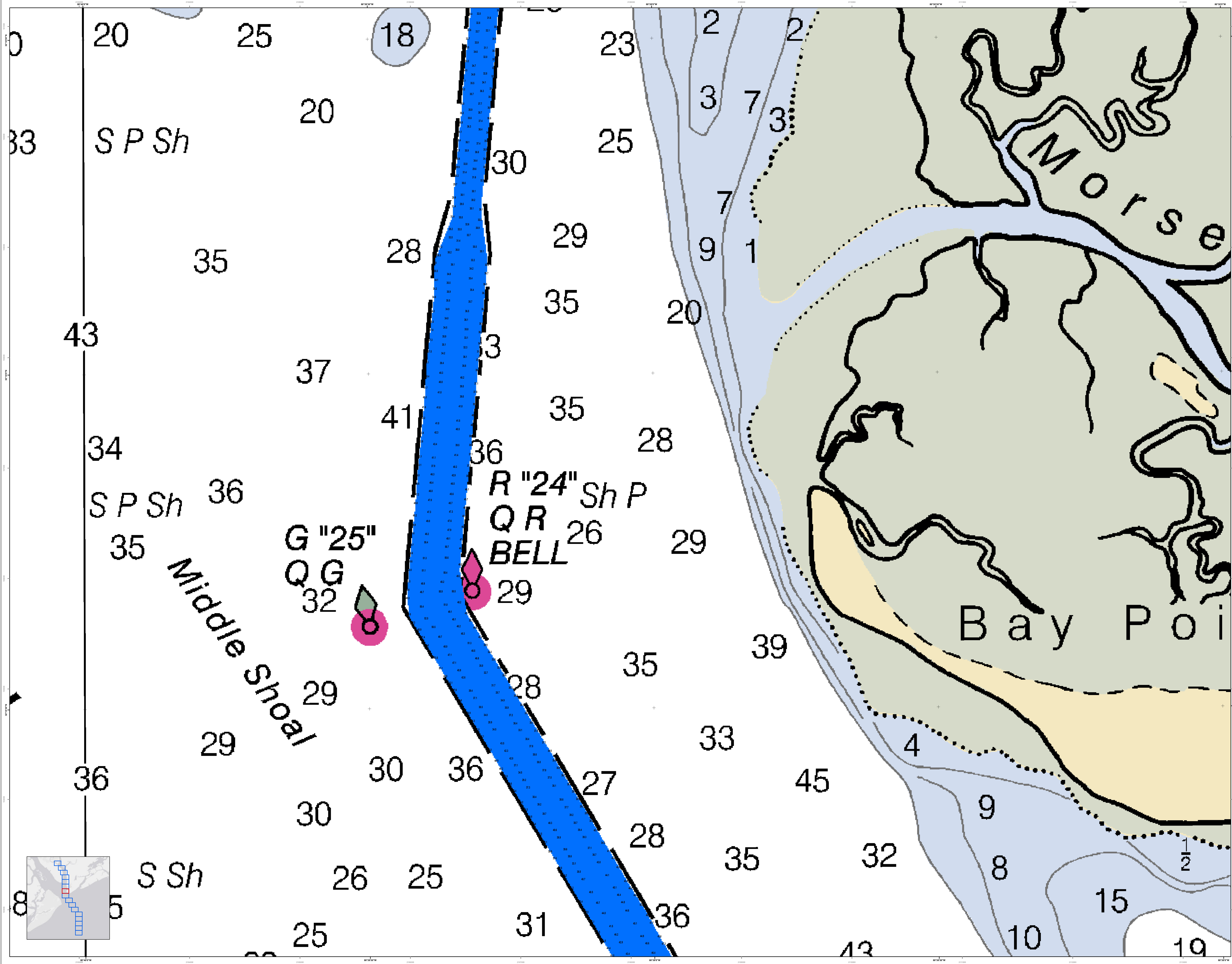
Production Notes:  
1. This map is a photographic reproduction of the original survey data.  
2. The data were collected by the following personnel:  
3. The data were collected by the following personnel:  
4. The data were collected by the following personnel:  
5. The data were collected by the following personnel:  
6. The data were collected by the following personnel:  
7. The data were collected by the following personnel:  
8. The data were collected by the following personnel:  
9. The data were collected by the following personnel:  
10. The data were collected by the following personnel:



Designed By:	Survey Date:	Production Date:
Hydro Software v3.82	31 AUG 2021	09 SEP 2021
Reviewed By:	Project Reference Number:	Project Reference Number:
1:50,000	1:50,000	1:50,000
Scale:	Scale:	Scale:
1 inch = 250 feet	1 inch = 250 feet	1 inch = 250 feet
Projection:	Projection:	Projection:
NAD 1983 StatePlane South Carolina FIPS 3800 Feet	NAD 1983 StatePlane South Carolina FIPS 3800 Feet	NAD 1983 StatePlane South Carolina FIPS 3800 Feet

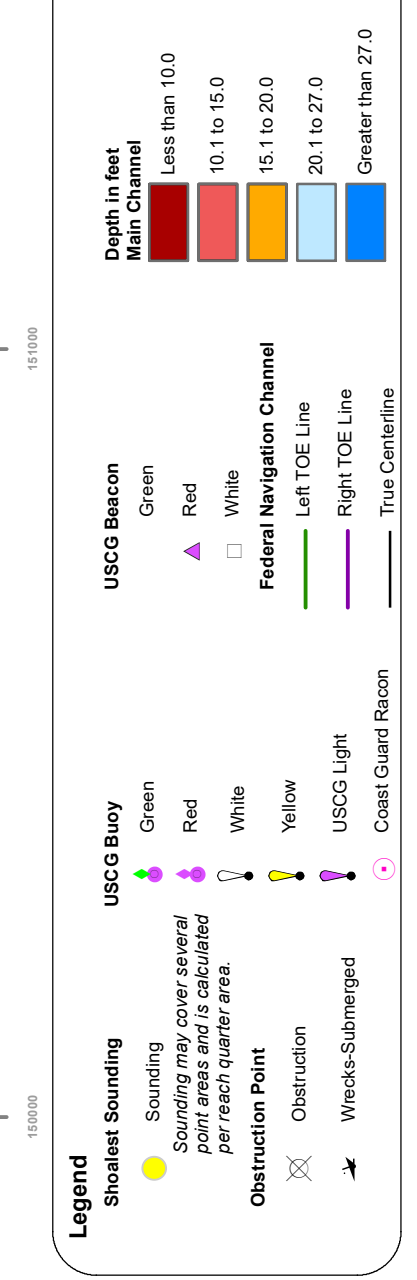
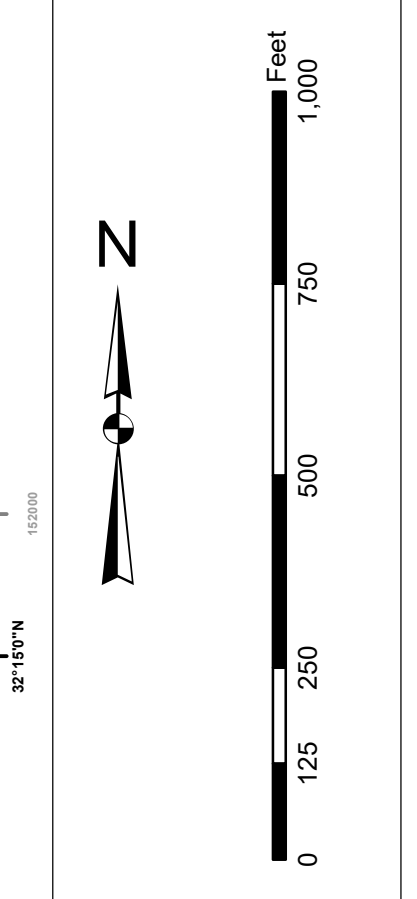
**Port Royal Harbor Channel Survey**  
The information depicted on this map represents the results of surveys made on the dates indicated and can only be considered as indicating the general character of the channel. It is not intended to be used for navigation. Mariners are encouraged to use all prudent safety practices.

Concluded on: **31 AUG 2021**  
Port Royal, South Carolina



In accordance with the U.S. Army Corps of Engineers, Charleston District Office, Navigation Rules for Inland Waterways, Section 205, the information on this map represents the results of surveys made on the dates indicated and can only be considered as indicating the general character of the channel. It is not intended to be used for navigation. Mariners are encouraged to use all prudent safety practices.

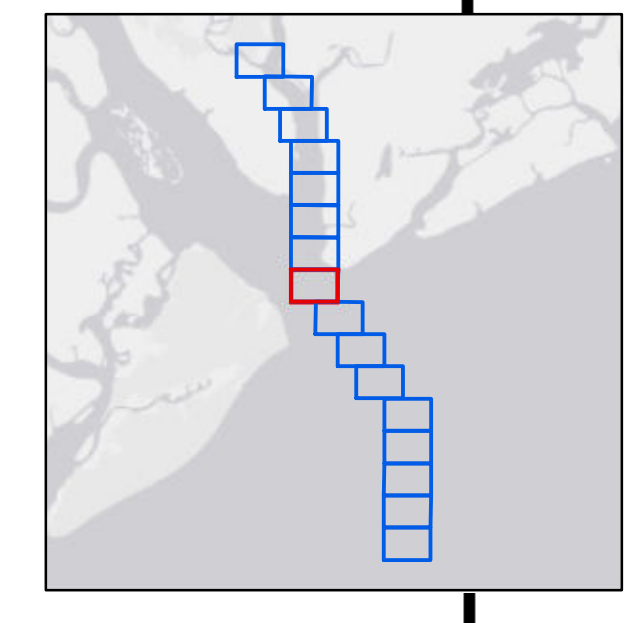
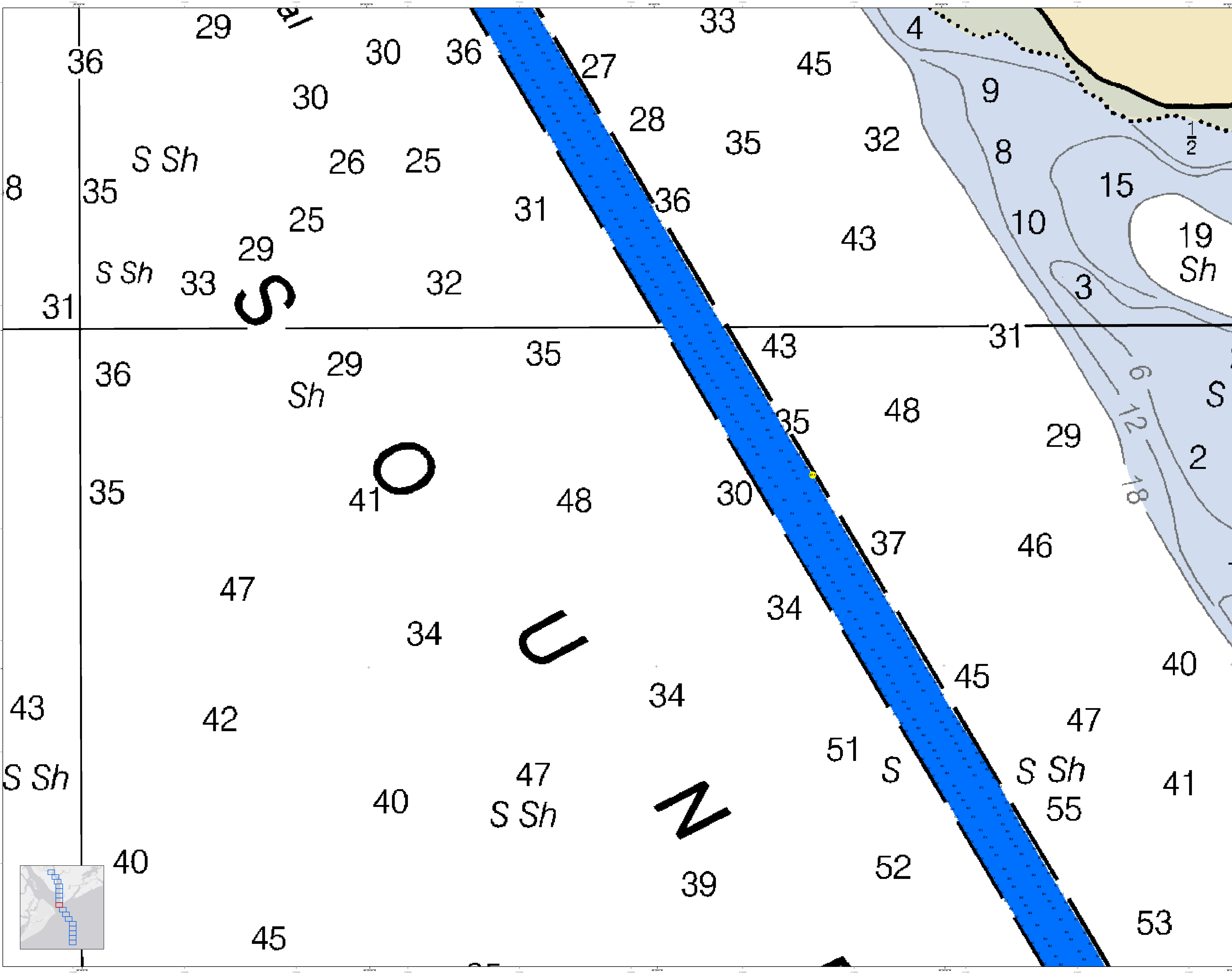
Production Notes:  
1. This map is a preliminary product.  
2. It is not intended to be used for navigation.  
3. It is not intended to be used for navigation.  
4. It is not intended to be used for navigation.  
5. It is not intended to be used for navigation.  
6. It is not intended to be used for navigation.  
7. It is not intended to be used for navigation.  
8. It is not intended to be used for navigation.  
9. It is not intended to be used for navigation.  
10. It is not intended to be used for navigation.  
11. It is not intended to be used for navigation.  
12. It is not intended to be used for navigation.  
13. It is not intended to be used for navigation.  
14. It is not intended to be used for navigation.  
15. It is not intended to be used for navigation.  
16. It is not intended to be used for navigation.  
17. It is not intended to be used for navigation.  
18. It is not intended to be used for navigation.  
19. It is not intended to be used for navigation.  
20. It is not intended to be used for navigation.  
21. It is not intended to be used for navigation.  
22. It is not intended to be used for navigation.  
23. It is not intended to be used for navigation.  
24. It is not intended to be used for navigation.  
25. It is not intended to be used for navigation.  
26. It is not intended to be used for navigation.  
27. It is not intended to be used for navigation.  
28. It is not intended to be used for navigation.  
29. It is not intended to be used for navigation.  
30. It is not intended to be used for navigation.  
31. It is not intended to be used for navigation.  
32. It is not intended to be used for navigation.  
33. It is not intended to be used for navigation.  
34. It is not intended to be used for navigation.  
35. It is not intended to be used for navigation.  
36. It is not intended to be used for navigation.  
37. It is not intended to be used for navigation.  
38. It is not intended to be used for navigation.  
39. It is not intended to be used for navigation.  
40. It is not intended to be used for navigation.  
41. It is not intended to be used for navigation.  
42. It is not intended to be used for navigation.  
43. It is not intended to be used for navigation.  
44. It is not intended to be used for navigation.  
45. It is not intended to be used for navigation.  
46. It is not intended to be used for navigation.  
47. It is not intended to be used for navigation.  
48. It is not intended to be used for navigation.  
49. It is not intended to be used for navigation.  
50. It is not intended to be used for navigation.  
51. It is not intended to be used for navigation.  
52. It is not intended to be used for navigation.  
53. It is not intended to be used for navigation.  
54. It is not intended to be used for navigation.  
55. It is not intended to be used for navigation.  
56. It is not intended to be used for navigation.  
57. It is not intended to be used for navigation.  
58. It is not intended to be used for navigation.  
59. It is not intended to be used for navigation.  
60. It is not intended to be used for navigation.  
61. It is not intended to be used for navigation.  
62. It is not intended to be used for navigation.  
63. It is not intended to be used for navigation.  
64. It is not intended to be used for navigation.  
65. It is not intended to be used for navigation.  
66. It is not intended to be used for navigation.  
67. It is not intended to be used for navigation.  
68. It is not intended to be used for navigation.  
69. It is not intended to be used for navigation.  
70. It is not intended to be used for navigation.  
71. It is not intended to be used for navigation.  
72. It is not intended to be used for navigation.  
73. It is not intended to be used for navigation.  
74. It is not intended to be used for navigation.  
75. It is not intended to be used for navigation.  
76. It is not intended to be used for navigation.  
77. It is not intended to be used for navigation.  
78. It is not intended to be used for navigation.  
79. It is not intended to be used for navigation.  
80. It is not intended to be used for navigation.  
81. It is not intended to be used for navigation.  
82. It is not intended to be used for navigation.  
83. It is not intended to be used for navigation.  
84. It is not intended to be used for navigation.  
85. It is not intended to be used for navigation.  
86. It is not intended to be used for navigation.  
87. It is not intended to be used for navigation.  
88. It is not intended to be used for navigation.  
89. It is not intended to be used for navigation.  
90. It is not intended to be used for navigation.  
91. It is not intended to be used for navigation.  
92. It is not intended to be used for navigation.  
93. It is not intended to be used for navigation.  
94. It is not intended to be used for navigation.  
95. It is not intended to be used for navigation.  
96. It is not intended to be used for navigation.  
97. It is not intended to be used for navigation.  
98. It is not intended to be used for navigation.  
99. It is not intended to be used for navigation.  
100. It is not intended to be used for navigation.



Designed By:	Survey Date:	Production Date:
Hydro Software v3.82	31 AUG 2021	09 SEP 2021
Reviewed By:	Project Reference Number:	
1:50,000	PC00010	
Scale:	Scale:	
1 inch = 250 feet	CONDITON	
Projection:		
NAD 1983 StatePlane South Carolina FIPS 3800 Feet		

**Port Royal Harbor Channel Survey**  
The information depicted on this map represents the results of surveys made on the dates indicated and can only be considered as indicating the general character of the channel. It is not intended to be used for navigation. Mariners are encouraged to use all prudent safety practices.

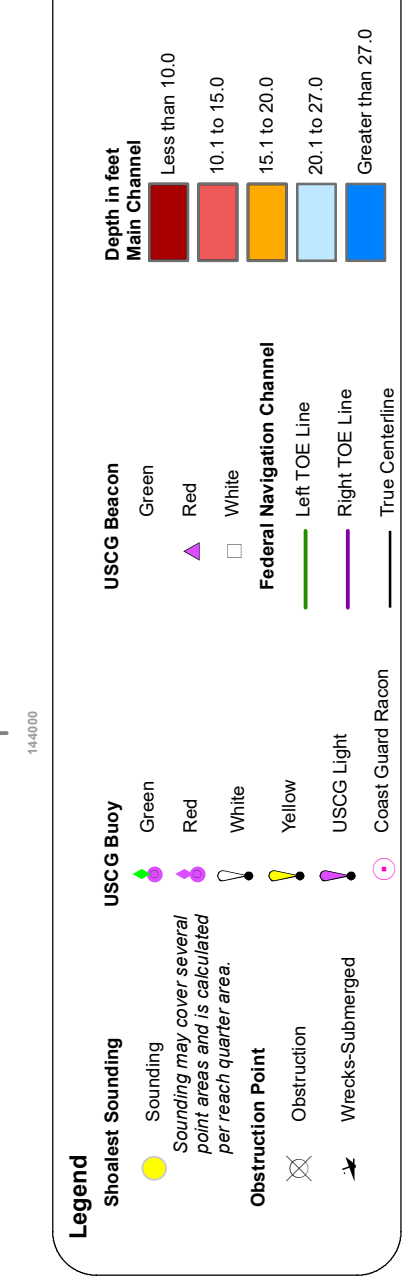
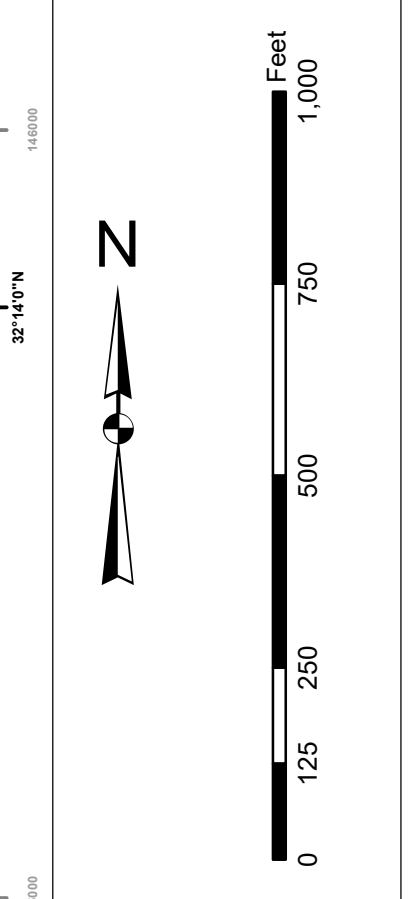
Concluded on: **31 AUG 2021**  
Port Royal, South Carolina





In accordance with the U.S. Army Corps of Engineers, Charleston District Office, Navigation Channel Survey for the Port Royal Harbor, South Carolina, the information on this map represents the results of surveys made on the dates indicated and can only be considered as indicating the general character of the channel. It is not intended to be used for navigation. Mariners are encouraged to use all prudent safety practices.

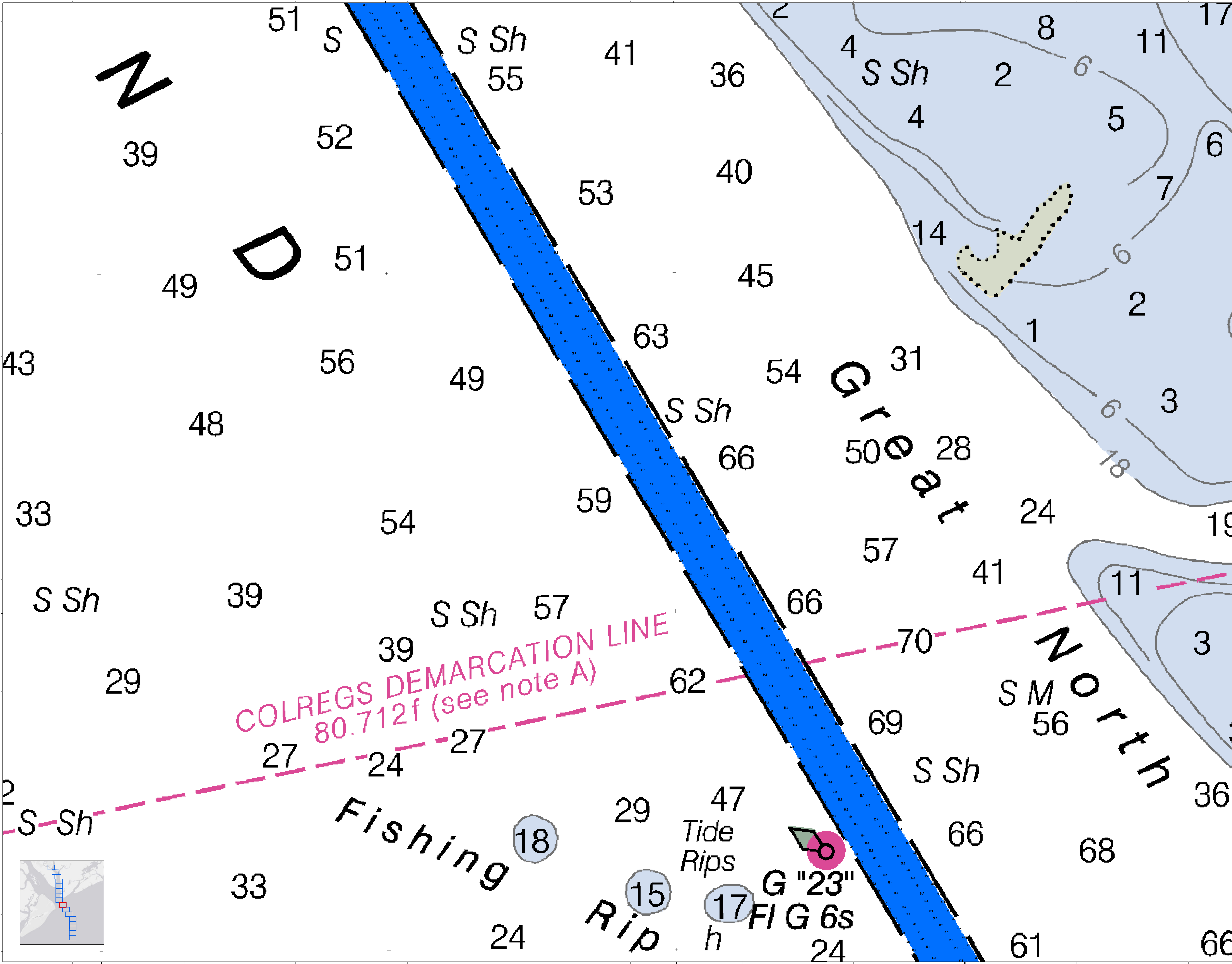
Production Notes:  
1. This map is a photographic reproduction of the original map.  
2. The original map was produced by the U.S. Army Corps of Engineers, Charleston District Office, Charleston, South Carolina.  
3. The original map was produced by the U.S. Army Corps of Engineers, Charleston District Office, Charleston, South Carolina.  
4. The original map was produced by the U.S. Army Corps of Engineers, Charleston District Office, Charleston, South Carolina.  
5. The original map was produced by the U.S. Army Corps of Engineers, Charleston District Office, Charleston, South Carolina.  
6. The original map was produced by the U.S. Army Corps of Engineers, Charleston District Office, Charleston, South Carolina.  
7. The original map was produced by the U.S. Army Corps of Engineers, Charleston District Office, Charleston, South Carolina.  
8. The original map was produced by the U.S. Army Corps of Engineers, Charleston District Office, Charleston, South Carolina.  
9. The original map was produced by the U.S. Army Corps of Engineers, Charleston District Office, Charleston, South Carolina.  
10. The original map was produced by the U.S. Army Corps of Engineers, Charleston District Office, Charleston, South Carolina.

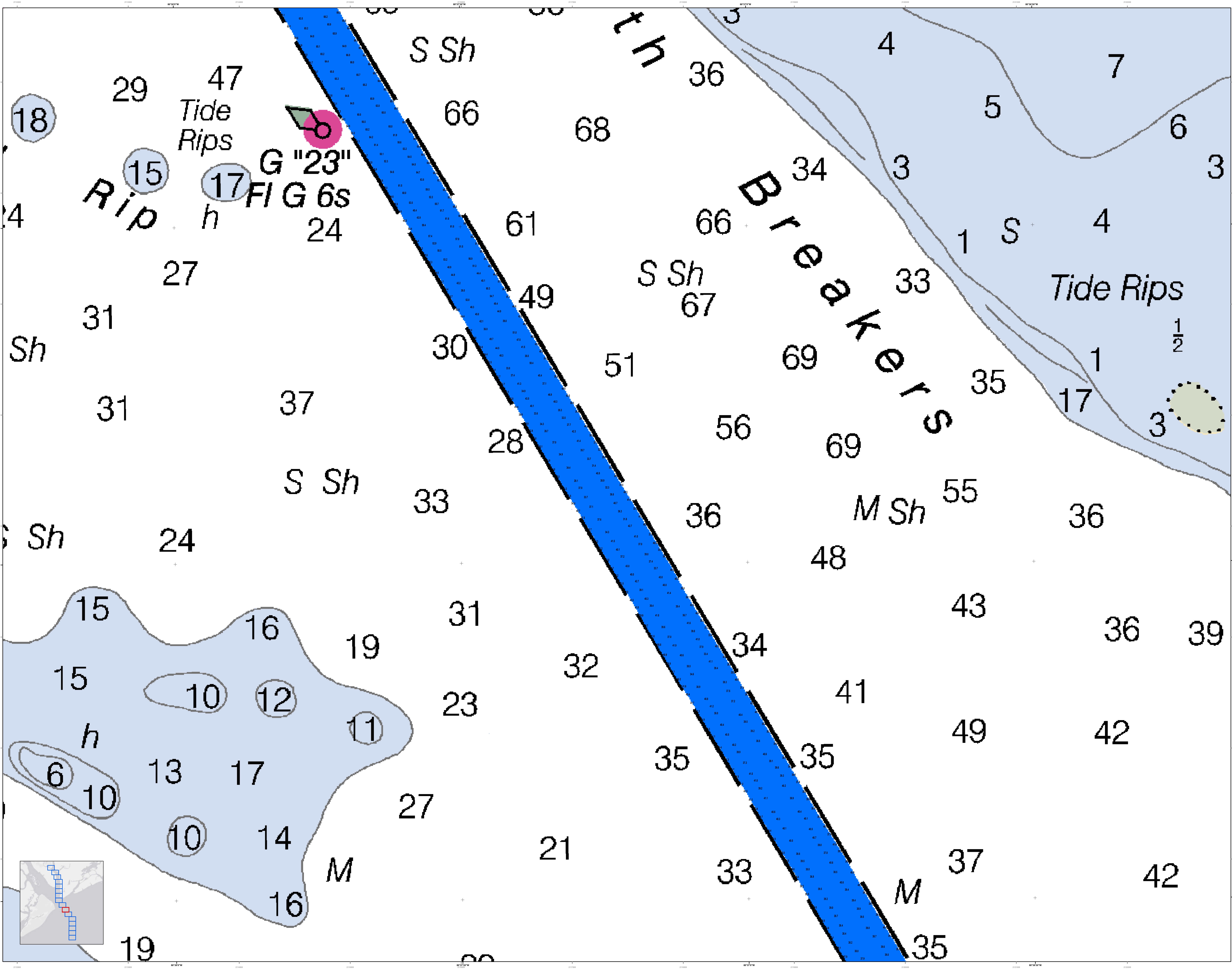


Designed By:	Survey Date:	Production Date:
Hydro Software v3.82	31 AUG 2021	09 SEP 2021
Reviewed By:	Project Reference Number:	
1:5000	PC00010	
Scale:	Scale:	Scale:
1 inch = 250 feet	1 inch = 250 feet	1 inch = 250 feet
Projection:	Projection:	Projection:
NAD 1983 StatePlane South Carolina FIPS 3800 Feet	NAD 1983 StatePlane South Carolina FIPS 3800 Feet	NAD 1983 StatePlane South Carolina FIPS 3800 Feet

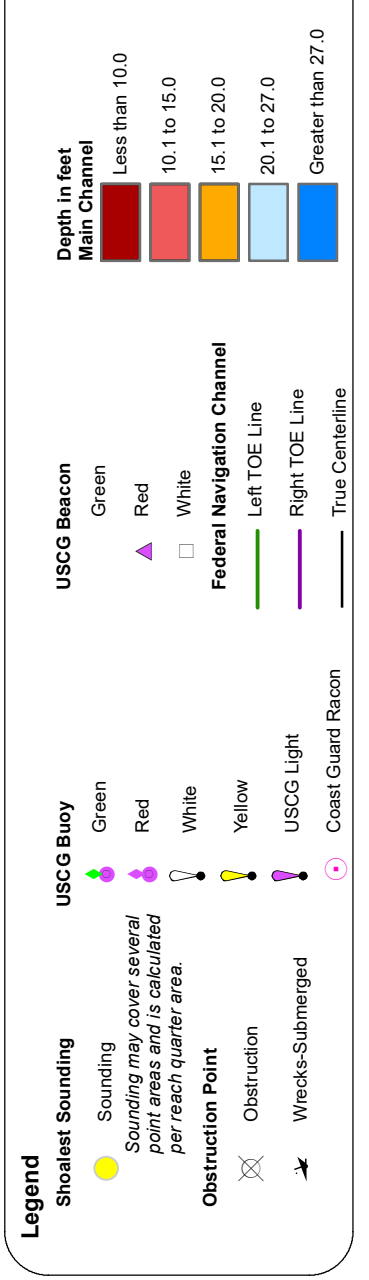
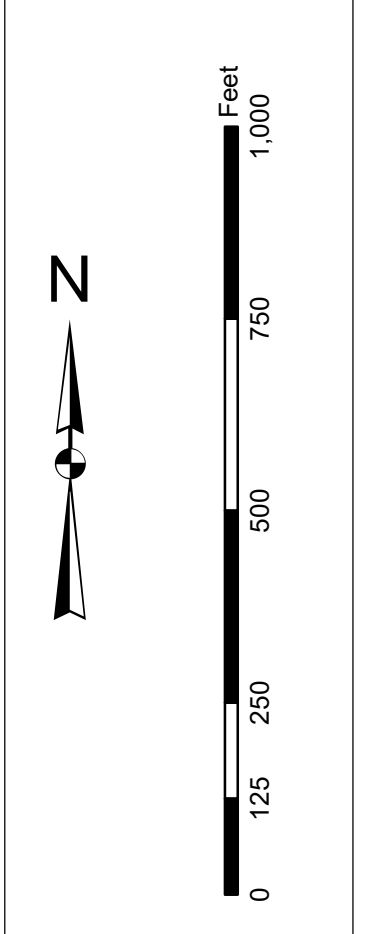
**Port Royal Harbor Channel Survey**  
The information on this map represents the results of surveys made on the dates indicated and can only be considered as indicating the general character of the channel. It is not intended to be used for navigation. Mariners are encouraged to use all prudent safety practices.

Concluded on: 31 AUG 2021  
Port Royal, South Carolina





**Production Notes:**  
 1. This is a preliminary chart. It is not to be used for navigation.  
 2. These data have been derived from the best available information and are subject to change without notice.  
 3. Soundings are in feet unless otherwise indicated.  
 4. The datum is Mean Low Water (MLW).  
 5. The chart is based on the latest available data.  
 6. Mariners are encouraged to use all prudent safety practices.

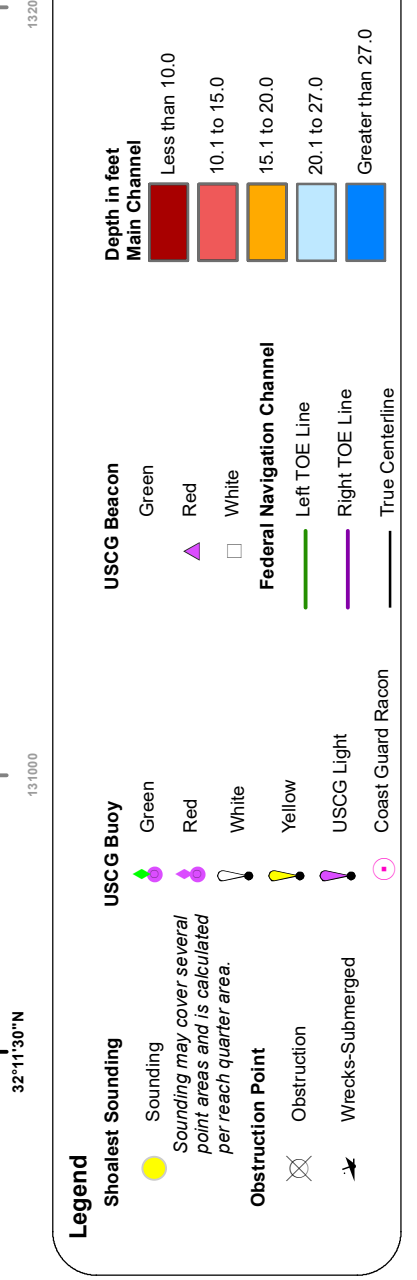
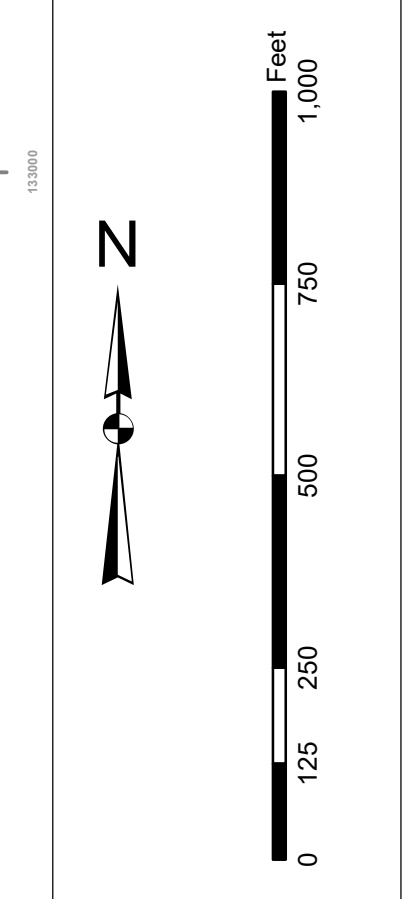


Designed By:	Survey Date:	Production Date:
Hydro Software v3.82	31 AUG 2021	09 SEP 2021
Reviewed By:	Project Reference Number:	
T. S. 2020	PC020010	
Revised State:	Survey State:	
1 inch = 250 feet	SOUTH CAROLINA	
Projection:	Projection:	
NAD 1983 StatePlane South Carolina FIPS 3800 Feet	NAD 1983 StatePlane South Carolina FIPS 3800 Feet	

**Port Royal Harbor Channel Survey**  
 The information depicted on this map represents the results of surveys made on the dates indicated and can only be considered as indicating the general character of the bottom. It is not to be used for navigation.  
 Concluded on: 31 AUG 2021  
 Port Royal, South Carolina

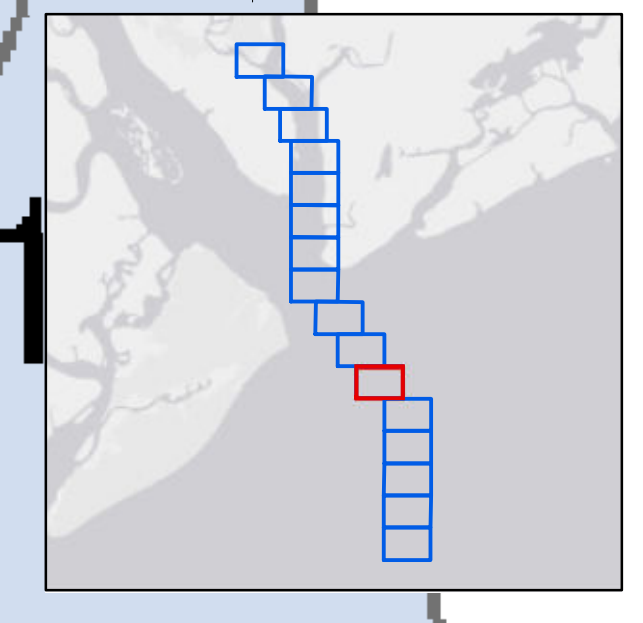
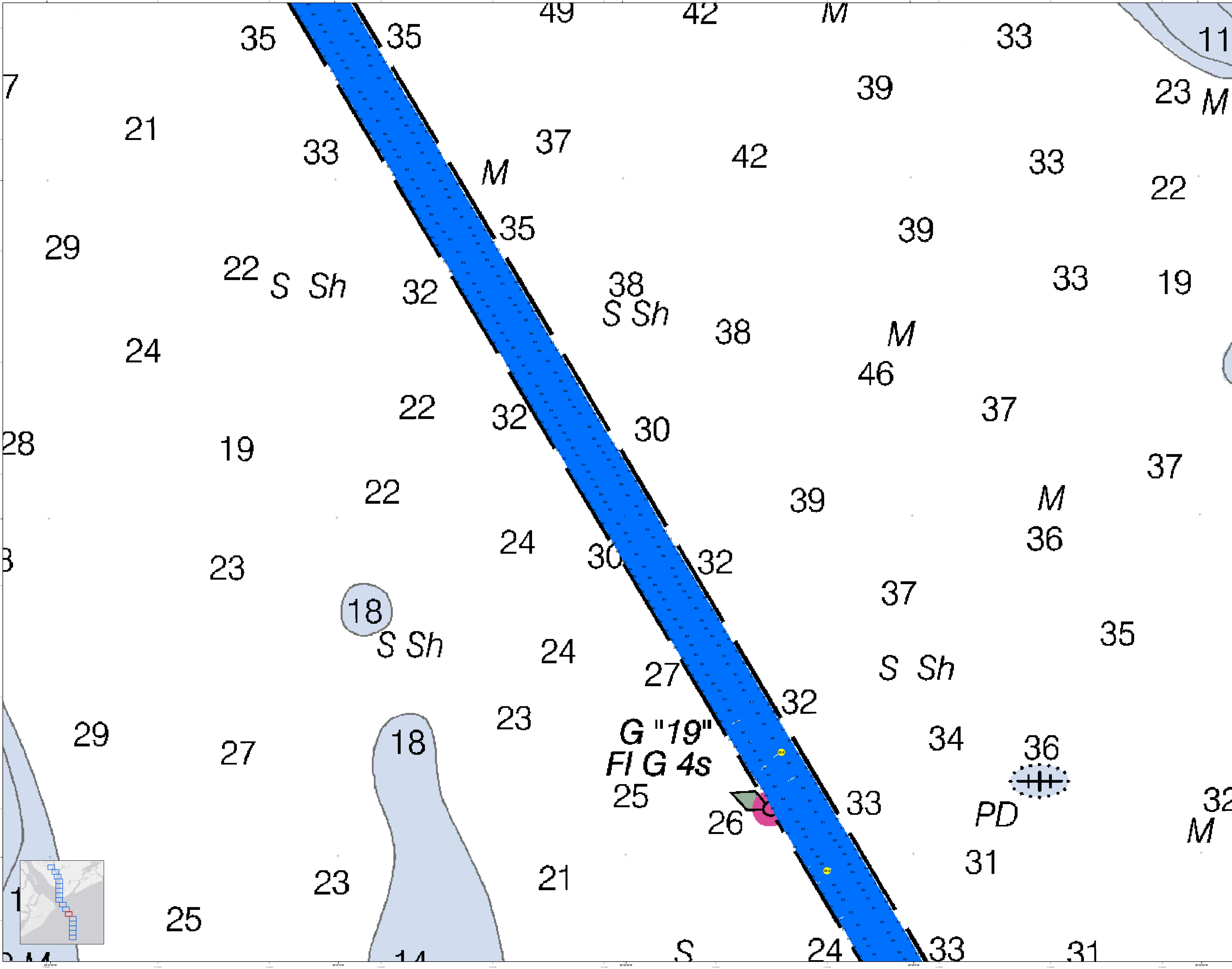
In its capacity as the U.S. Army Corps of Engineers, Charleston District Office, Navigation Section is unable to affirm, disprove, or certify the accuracy of the data shown on this map. The data shown on this map is derived from a variety of sources and is not intended to be used for navigation purposes. The data shown on this map is for informational purposes only and should not be used for navigation purposes. The data shown on this map is for informational purposes only and should not be used for navigation purposes.

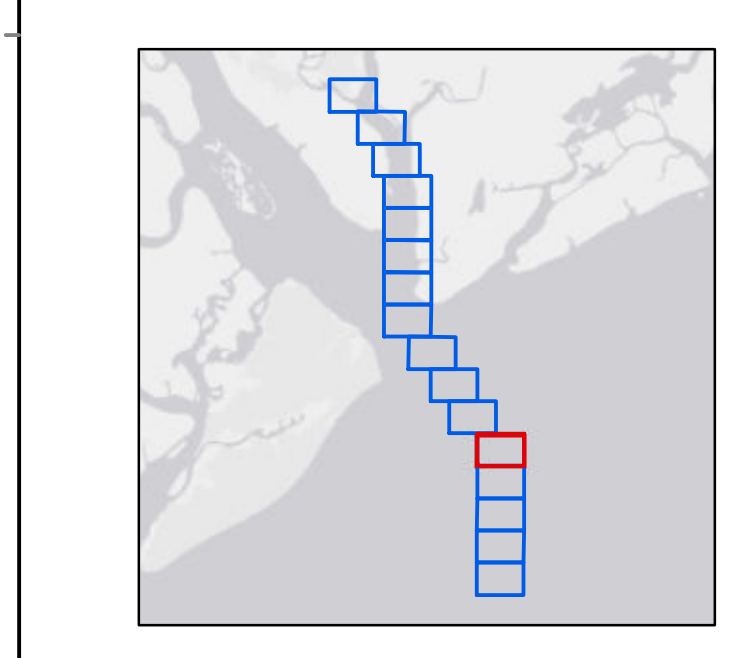
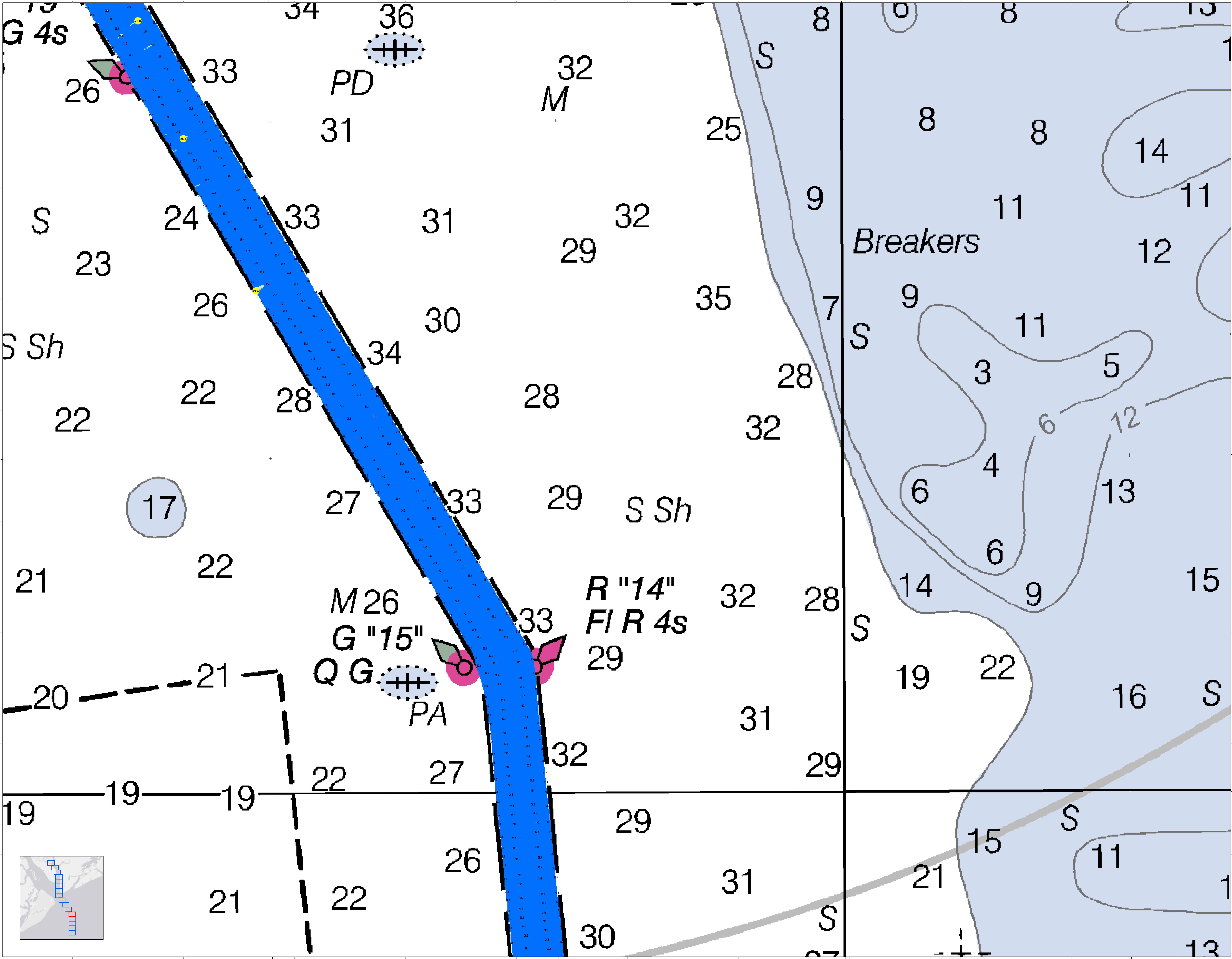
**Production Notes:**  
1. This map is the property of the U.S. Army Corps of Engineers, Charleston District Office. It is loaned to you for your use only. It is not to be reproduced, stored in a retrieval system, or transmitted in any form or by any means, electronic, mechanical, photocopying, recording, or by any information storage and retrieval system, without the prior written permission of the U.S. Army Corps of Engineers, Charleston District Office.  
2. All data shown on this map is derived from the best available information and is not intended to be used for navigation purposes. The data shown on this map is for informational purposes only and should not be used for navigation purposes.  
3. All data shown on this map is derived from the best available information and is not intended to be used for navigation purposes. The data shown on this map is for informational purposes only and should not be used for navigation purposes.



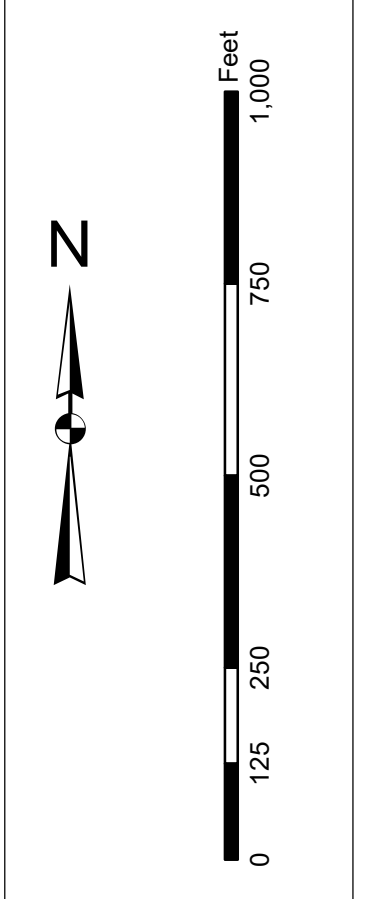
Designed By:	Survey Date:	Production Date:
Hydro Software v3.82	31 AUG 2021	09 SEP 2021
Reviewed By:	Project Reference Number:	
1:50,000	PC00010	
Scale:	Scale:	Scale:
1 inch = 250 feet	1 inch = 250 feet	1 inch = 250 feet
Projection:	Projection:	Projection:
NAD 1983 StatePlane South Carolina FIPS 3800 Feet	NAD 1983 StatePlane South Carolina FIPS 3800 Feet	NAD 1983 StatePlane South Carolina FIPS 3800 Feet

**Port Royal Harbor Channel Survey**  
The information depicted on this map represents the results of surveys made on the dates indicated and can only be considered as indicating the general location of the channel. It is not intended to be used for navigation purposes.  
Concluded on: 31 AUG 2021  
Port Royal, South Carolina





**Production Notes:**  
1. This chart is produced by the U.S. Army Corps of Engineers, Charleston District Office. It is derived from a combination of hydrographic and other data. It is not intended to be used for navigation purposes or for other purposes where accuracy is required. It is intended to be used for general information only.  
2. This chart is not a substitute for a compass, log, or other navigational instruments.  
3. The U.S. Coast Guard is the primary authority for the location and soundings of navigational aids.  
4. The U.S. Coast Guard is the primary authority for the location and soundings of navigational aids.  
5. The U.S. Coast Guard is the primary authority for the location and soundings of navigational aids.  
6. The U.S. Coast Guard is the primary authority for the location and soundings of navigational aids.



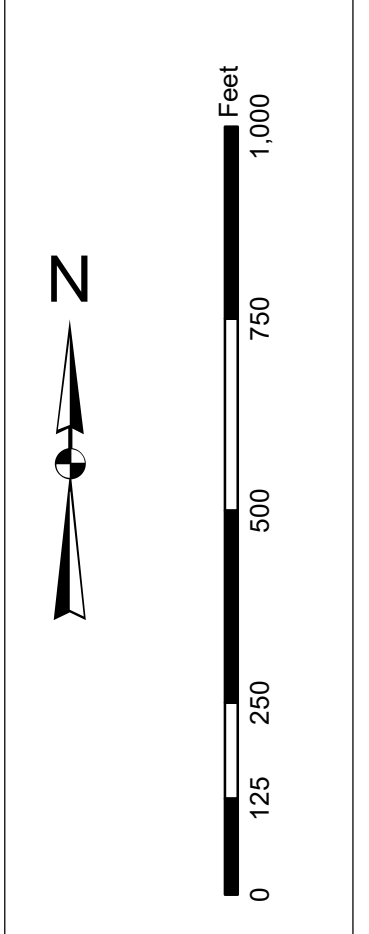
Symbol	Description
[Red line]	Channel
[Yellow line]	Submerged
[Green line]	Shoals
[Blue line]	Breakers
[White circle]	Light
[Black circle]	Bell
[Red circle]	Flashing Light
[Green circle]	Flashing Bell
[Yellow circle]	Flashing Light and Bell
[Blue circle]	Flashing Light and Bell
[Black circle]	Daymark
[Red circle]	Daymark
[Green circle]	Daymark
[Blue circle]	Daymark
[White square]	Obstruction
[Black square]	Obstruction
[Red square]	Obstruction
[Green square]	Obstruction
[Blue square]	Obstruction
[Black triangle]	Obstruction
[Red triangle]	Obstruction
[Green triangle]	Obstruction
[Blue triangle]	Obstruction
[Black diamond]	Obstruction
[Red diamond]	Obstruction
[Green diamond]	Obstruction
[Blue diamond]	Obstruction
[Black circle with cross]	Light
[Red circle with cross]	Light
[Green circle with cross]	Light
[Blue circle with cross]	Light
[Black circle with cross]	Light
[Red circle with cross]	Light
[Green circle with cross]	Light
[Blue circle with cross]	Light

Designed By:	Survey Date:	Production Date:
Reviewed By:	Project Reference Number:	
Scale:	Scale:	Scale:
Projection:	Projection:	Projection:
Chart No.:	Chart No.:	Chart No.:
Issue Date:	Issue Date:	Issue Date:
Revision:	Revision:	Revision:
Author:	Author:	Author:
Editor:	Editor:	Editor:
Checked:	Checked:	Checked:
Approved:	Approved:	Approved:

**Port Royal Harbor Channel Survey**  
The information depicted on this map represents the results of surveys made on the dates indicated and can only be considered as indicating the general location of objects and soundings.  
Concluded on: 31 AUG 2021  
Port Royal, South Carolina

In accordance with the U.S. Army Corps of Engineers, Charleston District Office, Navigation Rules for Inland Waterways, Chapter 2, Section 2.1, the information on this map represents the results of surveys made on the dates indicated and can only be considered as indicating the general character of the data. It is not intended to be used for navigation. The information on this map is not intended to be used for navigation. The information on this map is not intended to be used for navigation.

**Projection Note:**  
1. This map is projected to the North Carolina State Plane (NAD 83) datum.  
2. The map is projected to the North Carolina State Plane (NAD 83) datum.  
3. The map is projected to the North Carolina State Plane (NAD 83) datum.  
4. The map is projected to the North Carolina State Plane (NAD 83) datum.



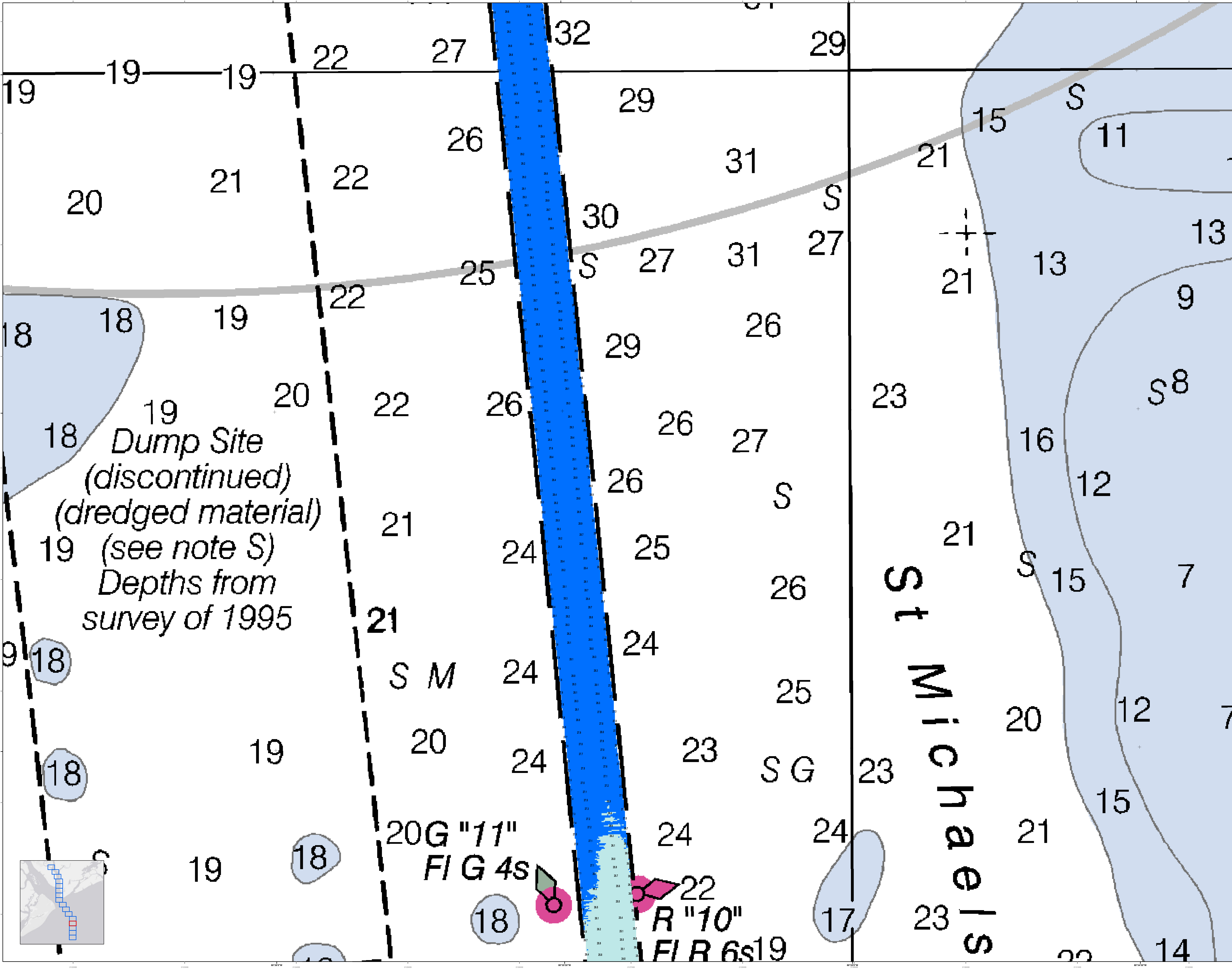
**Legend**

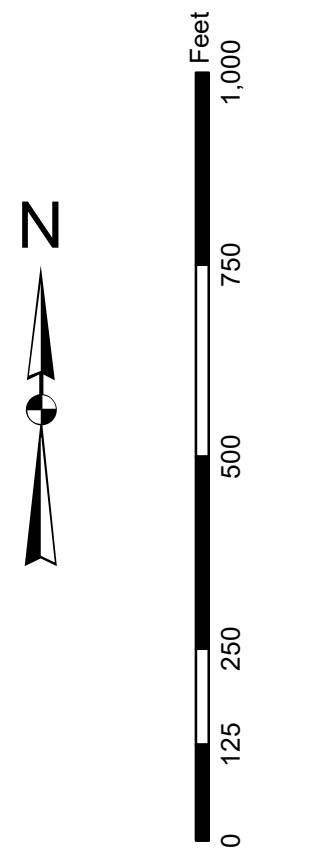
- Depth Soundings: 18, 19, 20, 21, 22, 23, 24, 25, 26, 27, 28, 29, 30, 31, 32
- USACE Boundaries: 1. USACE Channel, 2. USACE Right of Way, 3. USACE Facility
- USACE Features: 1. USACE Channel, 2. USACE Right of Way, 3. USACE Facility
- Navigation Channel: 1. USACE Channel, 2. USACE Right of Way, 3. USACE Facility
- Obstructions: 1. Obstruction, 2. Obstruction
- Other: 1. Other, 2. Other

Designed By:	Jeffery L. Smith	Reviewed By:	15,000	Scale:	1 inch = 250 feet
Production Date:	31 AUG 2021	Project Reference Number:	PC00010	Projection:	NAD 1983 StatePlane South Carolina FIPS 3800 Feet
U.S. Army Corps of Engineers	Charleston District	Charleston District	Charleston District	Charleston District	Charleston District
USACE Charleston District	818 HADDOCK AVE	CHARLESTON, SC 29403	843-328-8000		

**Port Royal Harbor Channel Survey**  
The information depicted on this map represents the results of surveys made on the dates indicated and can only be considered as indicating the general character of the data. It is not intended to be used for navigation. The information on this map is not intended to be used for navigation.

Concluded on: **31 AUG 2021**  
Port Royal, South Carolina





**Legend**

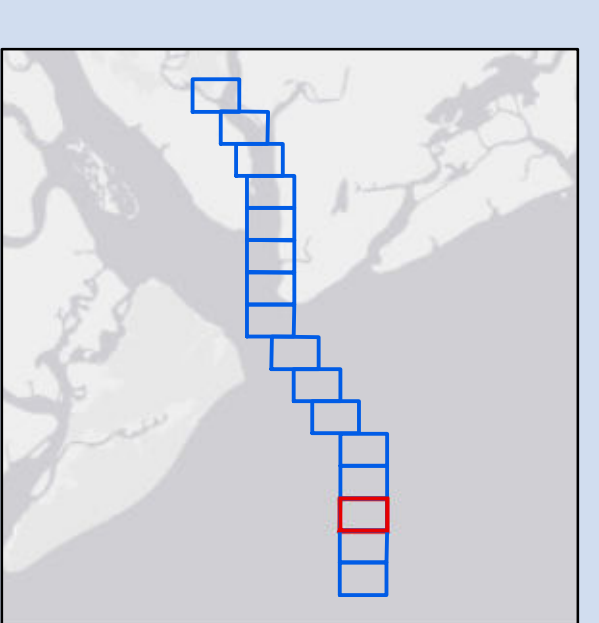
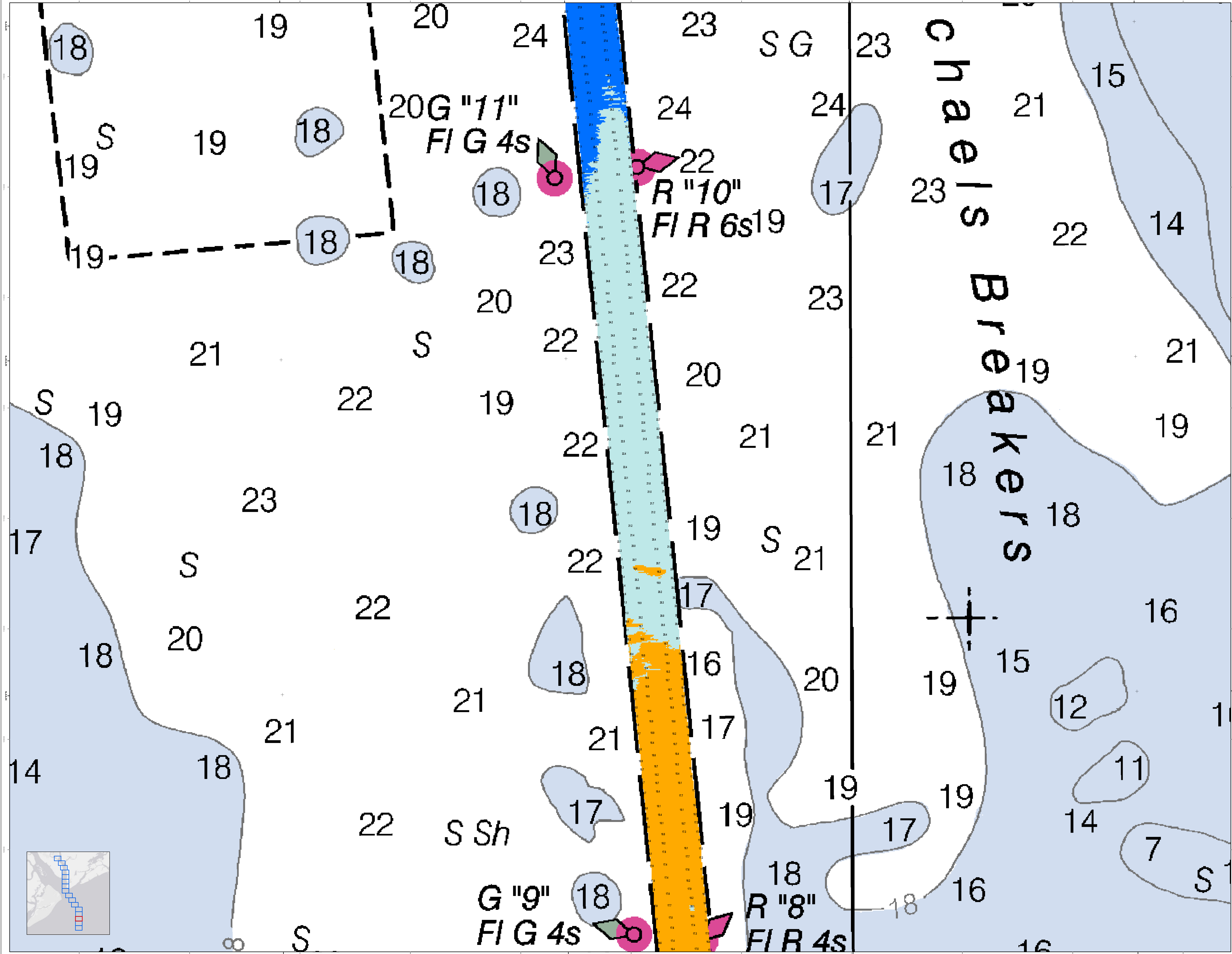
**Soundings:**  
Blue: 17 to 19  
Red: 19 to 21  
Yellow: 21 to 23  
Green: 23 to 25  
Cyan: 25 to 27  
Blue: 27 to 29  
Blue: 29 to 31

**Useful Symbols:**  
Red circle: Submerged Obstruction  
Green circle: Light  
Pink circle: Buoy  
Blue line: Channel  
Dashed line: Boundary  
Dotted line: Light  
Yellow line: Light  
Blue line: Light  
Green line: Light  
Yellow line: Light  
Blue line: Light  
Red line: Light  
Green line: Light  
Yellow line: Light  
Blue line: Light

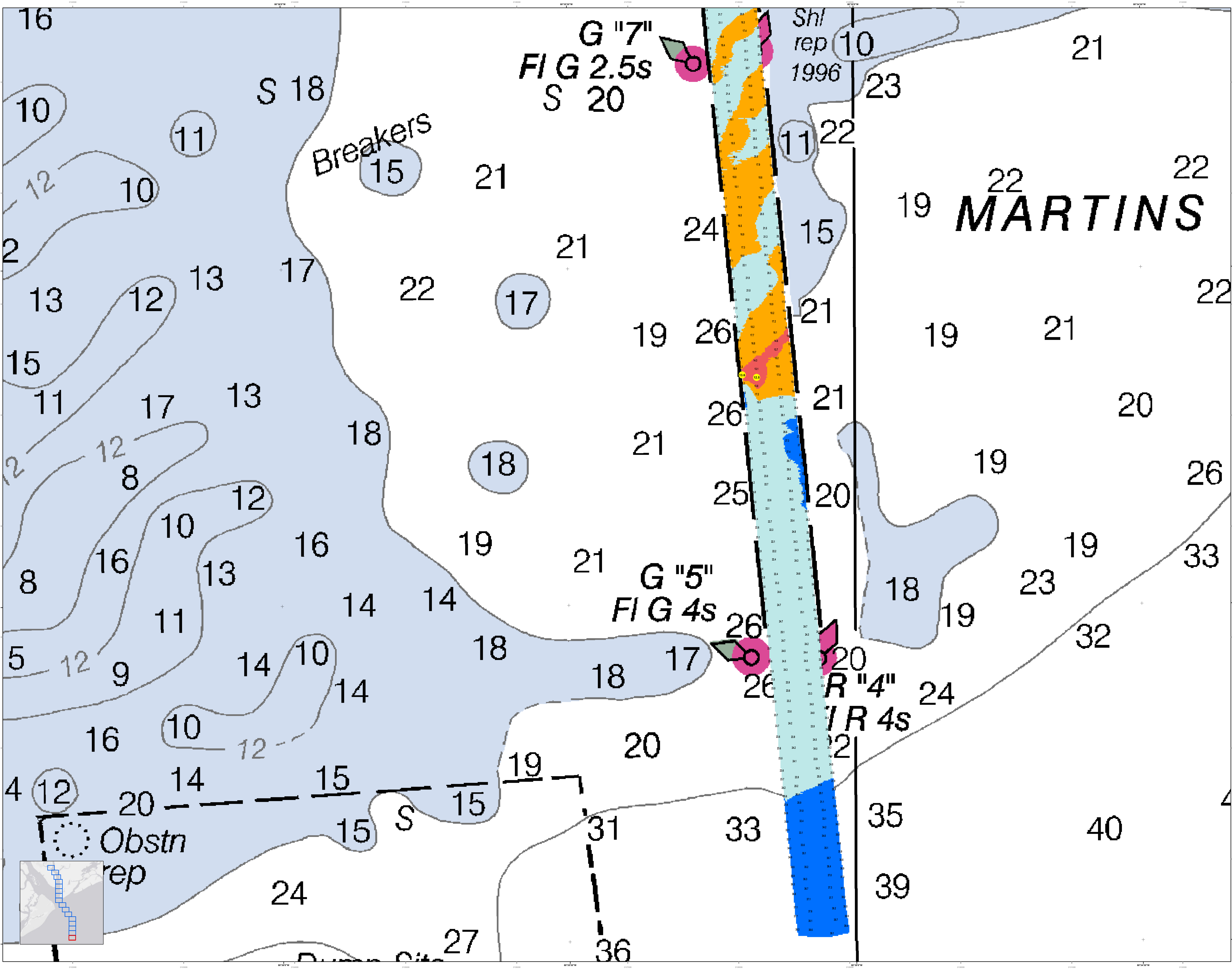
**Other Symbols:**  
Black circle: Submerged Obstruction  
Green circle: Light  
Pink circle: Buoy  
Blue line: Channel  
Dashed line: Boundary  
Dotted line: Light  
Yellow line: Light  
Blue line: Light  
Green line: Light  
Yellow line: Light  
Blue line: Light  
Red line: Light  
Green line: Light  
Yellow line: Light  
Blue line: Light

<b>Designed By:</b>	lelyto Software v3.02	<b>Survey Date:</b>	31 AUG 2021	<b>Production Date:</b>	09 SEP 2021
<b>Reviewed By:</b>	U.S. Army Corps of Engineers	<b>Absolute Scale:</b>	1:50,000	<b>Project Reference Number:</b>	1909001D
<b>Revised By:</b>	U.S. Army Corps of Engineers	<b>Graphic Scale:</b>	1 inch = 250 feet	<b>Survey Station:</b>	CONDITON
<b>Project:</b>	MAD 1933 StatePlane South Carolina FPS 3840 Feet				

**Port Royal Harbor Channel Survey**  
The information depicted on this map represents the results of surveys made on the dates indicated and can only be considered as indicating the general character of the channel. It is not to be used for navigation. This map was prepared and published by the U.S. Army Corps of Engineers, Charleston District Office, Navigation Section.  
Concluded on: **31 AUG 2021**  
Port Royal, South Carolina

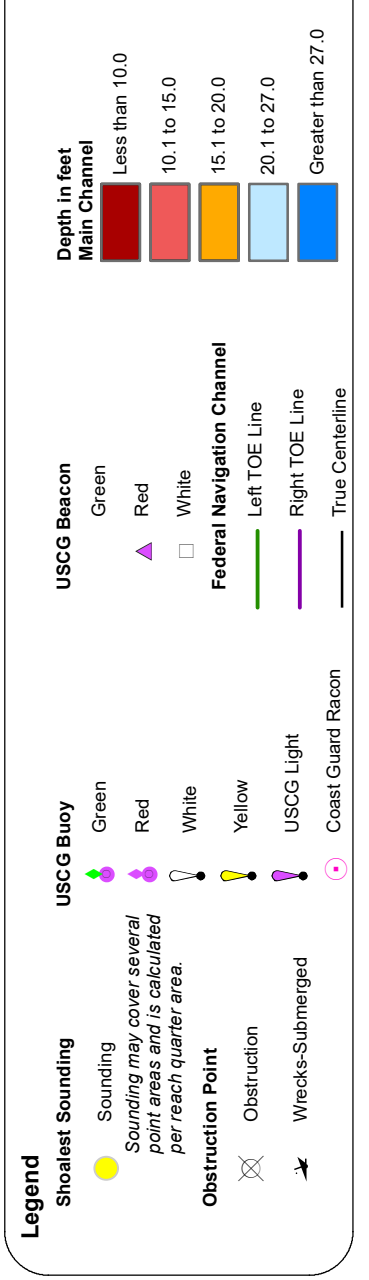
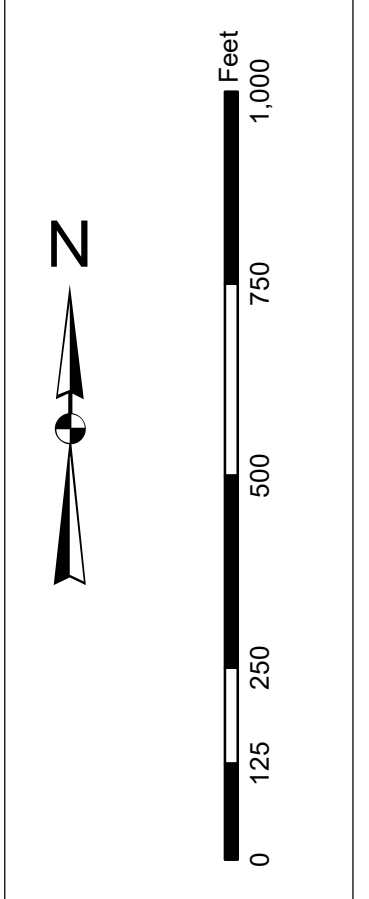






In its capacity as the U.S. Army Corps of Engineers, Charleston District Office, Newport News, Virginia, has prepared this chart for the purpose of providing information to the public. The information is provided for informational purposes only and does not constitute a warranty of any kind. The user assumes all responsibility for the use of this information. The information is provided as is and without any warranty of any kind. The user assumes all responsibility for the use of this information. The information is provided as is and without any warranty of any kind. The user assumes all responsibility for the use of this information.

Production Notes:  
1. This chart is produced by the U.S. Army Corps of Engineers, Charleston District Office, Newport News, Virginia.  
2. The information is provided for informational purposes only and does not constitute a warranty of any kind.  
3. The user assumes all responsibility for the use of this information.  
4. The information is provided as is and without any warranty of any kind.  
5. The user assumes all responsibility for the use of this information.



U.S. Army Corps of Engineers Charleston District Office 815 MacLeod Ave Charleston, SC 29405 843-325-8000	Designed By: Jethro Software v3.82 Reviewed By: Jethro Software v3.82 Scale: 1:50,000 Projection: NAD 1983 StatePlane South Carolina FIPS 3800 Feet	Survey Date: 31 AUG 2021 Project Reference Number: 19090001D Survey Station: 19090001D Condition: CONDITION	Production Date: 09 SEP 2021
---	--	--	------------------------------

Port Royal Harbor Channel Survey  
The information depicted on this map represents the results of surveys made on the dates indicated and can only be considered as indicating the general location of the objects shown. It is not to be used for navigation.  
Concluded on: 31 AUG 2021  
Port Royal, South Carolina