



DEPARTMENT OF THE ARMY  
U.S. ARMY CORPS OF ENGINEERS, CHARLESTON DISTRICT  
69 HAGOOD AVENUE  
CHARLESTON, SOUTH CAROLINA 29403

CESAC-RD

10 December 2024

MEMORANDUM FOR RECORD

SUBJECT: US Army Corps of Engineers (Corps) Pre-2015 Regulatory Regime  
Approved Jurisdictional Determination in Light of *Sackett v. EPA*, 143 S. Ct. 1322  
(2023),<sup>1</sup> SAC-2024-01160, (MFR# 1 of 1)<sup>2</sup>

BACKGROUND. An Approved Jurisdictional Determination (AJD) is a Corps document stating the presence or absence of waters of the United States on a parcel or a written statement and map identifying the limits of waters of the United States on a parcel. AJDs are clearly designated appealable actions and will include a basis of JD with the document.<sup>3</sup> AJDs are case-specific and are typically made in response to a request. AJDs are valid for a period of five years unless new information warrants revision of the determination before the expiration date or a District Engineer has identified, after public notice and comment, that specific geographic areas with rapidly changing environmental conditions merit re-verification on a more frequent basis.<sup>4</sup> For the purposes of this AJD, we have relied on Section 10 of the Rivers and Harbors Act of 1899 (RHA),<sup>5</sup> the Clean Water Act (CWA) implementing regulations published by the Department of the Army in 1986 and amended in 1993 (references 2.a. and 2.b. respectively), the 2008 *Rapanos-Carabell* guidance (reference 2.c.), and other applicable guidance, relevant case law and longstanding practice, (collectively the pre-2015 regulatory regime), and the *Sackett* decision (reference 2.d.) in evaluating jurisdiction.

This Memorandum for Record (MFR) constitutes the basis of jurisdiction for a Corps AJD as defined in 33 CFR §331.2. The features addressed in this AJD were evaluated consistent with the definition of “waters of the United States” found in the pre-2015 regulatory regime and consistent with the Supreme Court’s decision in *Sackett*. This AJD did not rely on the 2023 “Revised Definition of ‘Waters of the United States,’” as

---

<sup>1</sup> While the Supreme Court’s decision in *Sackett* had no effect on some categories of waters covered under the CWA, and no effect on any waters covered under RHA, all categories are included in this Memorandum for Record for efficiency.

<sup>2</sup> When documenting aquatic resources within the review area that are jurisdictional under the Clean Water Act (CWA), use an additional MFR and group the aquatic resources on each MFR based on the TNW, interstate water, or territorial seas that they are connected to. Be sure to provide an identifier to indicate when there are multiple MFRs associated with a single AJD request (i.e., number them 1, 2, 3, etc.).

<sup>3</sup> 33 CFR 331.2.

<sup>4</sup> Regulatory Guidance Letter 05-02.

<sup>5</sup> USACE has authority under both Section 9 and Section 10 of the Rivers and Harbors Act of 1899 but for convenience, in this MFR, jurisdiction under RHA will be referred to as Section 10.

CESAC-RD

SUBJECT: Pre-2015 Regulatory Regime Approved Jurisdictional Determination in Light of *Sackett v. EPA*, 143 S. Ct. 1322 (2023), SAC-2024-01160, MFR 1 of 1

amended on 8 September 2023 (Amended 2023 Rule) because, as of the date of this decision, the Amended 2023 Rule is not applicable in this state due to litigation.

1. SUMMARY OF CONCLUSIONS.

- a. Provide a list of each individual feature within the review area and the jurisdictional status of each one (i.e., identify whether each feature is/is not a water of the United States and/or a navigable water of the United States).

Name of Aquatic Resource	Acres (AC.)/Linear Feet (L.F)	Waters of the US (WOUS)	Section 404/ Section 10
(W #1) Jurisdictional Wetland	1.37 AC	yes	Section 404
(W #2) Jurisdictional Wetland	0.59 AC.	yes	Section 404
(W #3) Jurisdictional Wetland	0.25 AC.	yes	Section 404
(W #4) Jurisdictional Wetland	1.37 AC.	yes	Section 404
(W #5) Jurisdictional Wetland	0.35 AC.	yes	Section 404
(W #6) Jurisdictional Wetland	1.6 AC.	yes	Section 404
(W #7) Jurisdictional Wetland	0.3 AC.	yes	Section 404
(ImpWater #1) Impoundment of WOUS	5.6 AC.	yes	Section 404
(ImpWater #2) Impoundment of WOUS	1.81 AC	yes	Section 404

2. REFERENCES.

CESAC-RD

SUBJECT: Pre-2015 Regulatory Regime Approved Jurisdictional Determination in Light of *Sackett v. EPA*, 143 S. Ct. 1322 (2023), SAC-2024-01160, MFR 1 of 1

- a. Final Rule for Regulatory Programs of the Corps of Engineers, 51 FR 41206 (November 13, 1986).
- b. Clean Water Act Regulatory Programs, 58 FR 45008 (August 25, 1993).
- c. U.S. EPA & U.S. Army Corps of Engineers, Clean Water Act Jurisdiction Following the U.S. Supreme Court's Decision in *Rapanos v. United States & Carabell v. United States* (December 2, 2008)
- d. *Sackett v. EPA*, 598 U.S. \_\_\_, 143 S. Ct. 1322 (2023)

3. REVIEW AREA.

- a. Project Area Size: 81.33 acres
- b. Center Coordinates of the review area: Latitude: 33.9067°, Longitude - 78.6948°
- c. Nearest City: Longs
- d. County: Horry
- e. State: South Carolina

Much of the project area is comprised of timberlands with the southeast portion of the property being cleared and graded with the construction of an upland ornamental pond prior to 2014. There has been three (3) previous Approved Jurisdictional Determinations (AJDs) for the project area documented under SAC-2003-35273 dated March 7, 2005, and August 3, 2011, and SAC-2011-01408 dated January 24, 2020. Under the previous Jurisdictional determinations, the project area was determined to contain impounded waters of the US, Jurisdictional Wetlands, upland excavated ditches and one upland excavated ornamental pond. The project area is surrounded to the south by residential developments.

4. NEAREST TRADITIONAL NAVIGABLE WATER (TNW), INTERSTATE WATER, OR THE TERRITORIAL SEAS TO WHICH THE AQUATIC RESOURCE IS CONNECTED. Waccamaw River: Section 10,
5. FLOWPATH FROM THE SUBJECT AQUATIC RESOURCES TO A TNW, INTERSTATE WATER, OR THE TERRITORIAL SEAS:

Jurisdictional Wetlands "W#1 through W#7" totaling 5.83 acres are adjacent to onsite jurisdictional impoundments (ImpWater #1 & #2) by a series of upland excavated ditches to include roadside ditches, and culverts. The onsite Impoundment flows west to its confluence with the Waccamaw River, an offsite TNW.

Jurisdictional Impoundments “ImpWater#1 & ImpWater#2” totaling 7.41 acres in size flow to the west to the confluence with the Waccamaw River, an offsite TNW.

6. SECTION 10 JURISDICTIONAL WATERS<sup>6</sup>: Describe aquatic resources or other features within the review area determined to be jurisdictional in accordance with Section 10 of the Rivers and Harbors Act of 1899. Include the size of each aquatic resource or other feature within the review area and how it was determined to be jurisdictional in accordance with Section 10.<sup>7</sup> N/A
7. SECTION 404 JURISDICTIONAL WATERS: Describe the aquatic resources within the review area that were found to meet the definition of waters of the United States in accordance with the pre-2015 regulatory regime and consistent with the Supreme Court’s decision in *Sackett*. List each aquatic resource separately, by name, consistent with the naming convention used in section 1, above. Include a rationale for each aquatic resource, supporting that the aquatic resource meets the relevant category of “waters of the United States” in the pre-2015 regulatory regime. The rationale should also include a written description of, or reference to a map in the administrative record that shows, the lateral limits of jurisdiction for each aquatic resource, including how that limit was determined, and incorporate relevant references used. Include the size of each aquatic resource in acres or linear feet and attach and reference related figures as needed.
  - a. TNWs (a)(1): N/A
  - b. Interstate Waters (a)(2): N/A
  - c. Other Waters (a)(3): N/A
  - d. Impoundments (a)(4): The review area contains two (2) jurisdictional impoundments; totaling 7.41 acres in size flow to the west to the confluence with the Waccamaw River, an offsite TNW.
  - e. Tributaries (a)(5): N/A
  - f. The territorial seas (a)(6): N/A

---

<sup>6</sup> 33 CFR 329.9(a) A waterbody which was navigable in its natural or improved state, or which was susceptible of reasonable improvement (as discussed in § 329.8(b) of this part) retains its character as “navigable in law” even though it is not presently used for commerce, or is presently incapable of such use because of changed conditions or the presence of obstructions.

<sup>7</sup> This MFR is not to be used to make a report of findings to support a determination that the water is a navigable water of the United States. The district must follow the procedures outlined in 33 CFR part 329.14 to make a determination that water is a navigable water of the United States subject to Section 10 of the RHA.

- g. Adjacent wetlands (a)(7): The review area contains seven (7) jurisdictional wetlands; Wetlands W #1 through W #7 totaling 5.83 acres. Wetlands W #1 through W #7 are non-tidal wetlands that were determined to have a continuous surface connection to an offsite jurisdictional water. Wetlands W #1 and W #2 are directly abutting adjacent to the jurisdictional impoundment #1. Wetlands W #3 through W #7 are adjacent to onsite upland excavated ditches with culverts that drain directly to the onsite impoundment that flows directly to the offsite TNW, Waccamaw River.

## 8. NON-JURISDICTIONAL AQUATIC RESOURCES AND FEATURES

- a. Describe aquatic resources and other features within the review area identified as “generally non-jurisdictional” in the preamble to the 1986 regulations (referred to as “preamble waters”).<sup>8</sup> Include size of the aquatic resource or feature within the review area and describe how it was determined to be non-jurisdictional under the CWA as a preamble water.

The review area contains one upland excavated ornamental pond depicted as Upland-Excavated, non-jurisdictional pond on the associated wetland sketch. This pond was determined to be a Preamble waters (51 FR 41217) Reference page 16 of 59: [https://archives.federalregister.gov/issue\\_slice/1986/11/13/41202-41260.pdf](https://archives.federalregister.gov/issue_slice/1986/11/13/41202-41260.pdf)

Preamble waters (51 FR 41217), in part, are: *Artificial reflecting or swimming pools or other small ornamental bodies of water created by excavating and/or diking dry land to retain water for primarily aesthetic reasons are Preamble waters (51 FR 41217).*

- b. Describe aquatic resources and features within the review area identified as “generally not jurisdictional” in the *Rapanos* guidance. Include size of the aquatic resource or feature within the review area and describe how it was determined to be non-jurisdictional under the CWA based on the criteria listed in the guidance.

The review area contains several upland excavated ditches totaling approximately +/- 5,000 linear feet. Most of these ditches are located adjacent to an unimproved road system within the project area. These features are identified as Upland-Excavated, Non-Jurisdictional Ditches on the associated wetland sketch. These features were determined to have been excavated wholly in uplands do not carry a relative permanent flow of water.

---

<sup>8</sup> 51 FR 41217, November 13, 1986.

CESAC-RD

SUBJECT: Pre-2015 Regulatory Regime Approved Jurisdictional Determination in Light of *Sackett v. EPA*, 143 S. Ct. 1322 (2023), SAC-2024-01160, MFR 1 of 1

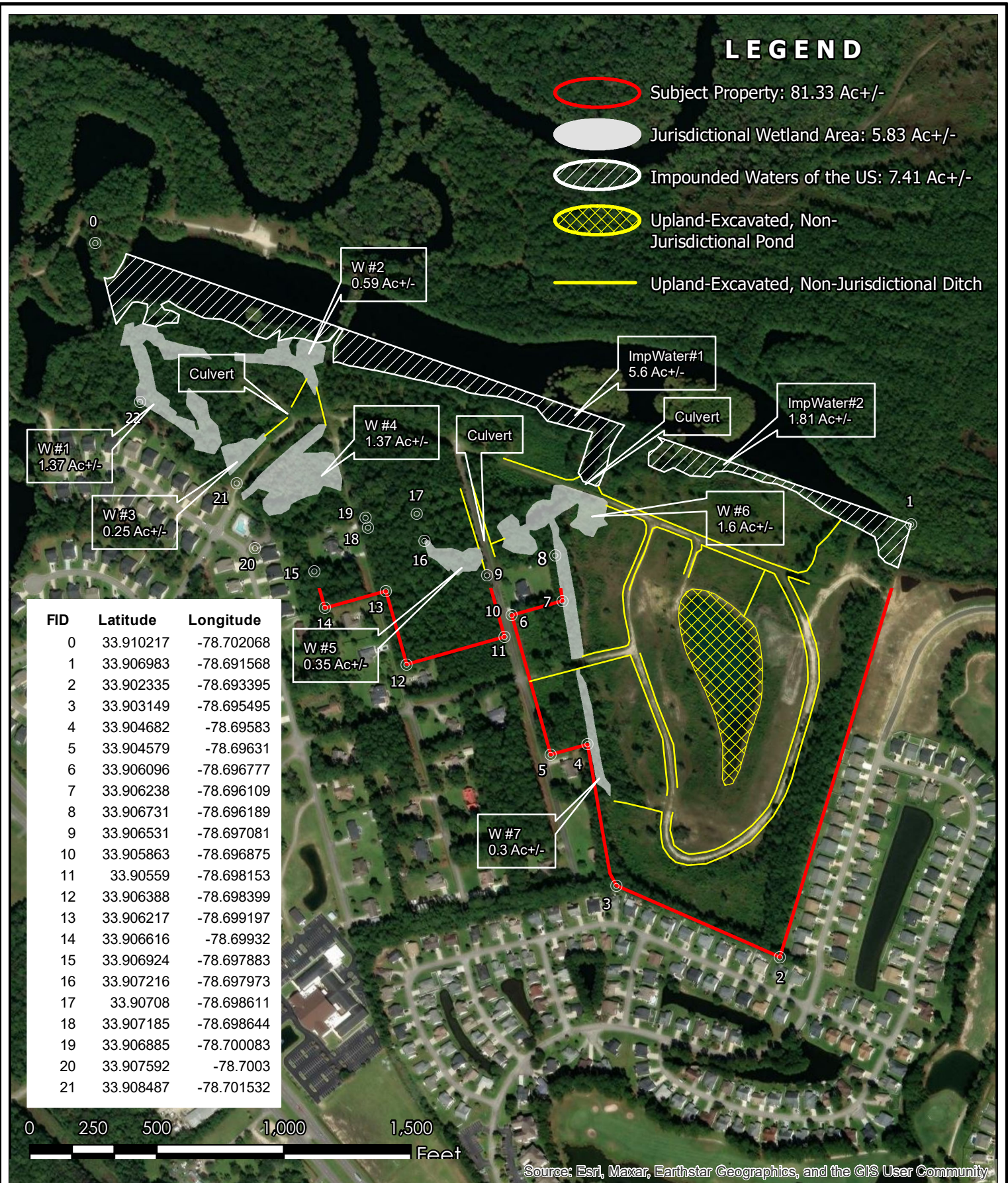
- c. Describe aquatic resources and features identified within the review area as waste treatment systems, including treatment ponds or lagoons designed to meet the requirements of CWA. Include the size of the waste treatment system within the review area and describe how it was determined to be a waste treatment system. **N/A**
  - d. Describe aquatic resources and features within the review area determined to be prior converted cropland in accordance with the 1993 regulations (reference 2.b.). Include the size of the aquatic resource or feature within the review area and describe how it was determined to be prior converted cropland. **N/A**
  - e. Describe aquatic resources (i.e. lakes and ponds) within the review area, which do not have a nexus to interstate or foreign commerce, and prior to the January 2001 Supreme Court decision in “*SWANCC*,” would have been jurisdictional based solely on the “Migratory Bird Rule.” Include the size of the aquatic resource or feature, and how it was determined to be an “isolated water” in accordance with *SWANCC*. **N/A**
  - f. Describe aquatic resources and features within the review area that were determined to be non-jurisdictional because they do not meet one or more categories of waters of the United States under the pre-2015 regulatory regime consistent with the Supreme Court’s decision in *Sackett* (e.g., tributaries that are non-relatively permanent waters; non-tidal wetlands that do not have a continuous surface connection to a jurisdictional water). **N/A**
9. DATA SOURCES. List sources of data/information used in making determination. Include titles and dates of sources used and ensure that information referenced is available in the administrative record.
- a. Review Performed for Site Evaluation: Onsite Determination.  
Date: November 12, 2024.
  - b. Aquatic Resources delineation submitted by, or on behalf of, the requestor:  
Wetland delineation submittal for the Rum Bluff – River Haven Property provided by the Brigman Company in the submittal dated October 2, 2024.
  - c. Aerial Imagery: 2020 SCDNR IR Aerial & 2020 SCDNR Aerial SC\_2020\_NIR (Map Service)
  - d. LIDAR: 3DEP Digital Elevation Model (DEM)  
<https://elevation.nationalmap.gov/arcgis/rest/services/3DEPElevation/ImageServer>

CESAC-RD

SUBJECT: Pre-2015 Regulatory Regime Approved Jurisdictional Determination in Light of *Sackett v. EPA*, 143 S. Ct. 1322 (2023), SAC-2024-01160, MFR 1 of 1

- e. USDA NRCS Soil Survey: Yemassee, Meggett, Bladen, Wahee, Ogeechee, Yauhannah, and Eulonia. SSURGO database.
  - f. USGS topographic maps: 7.5 Minute – Longs Quad: Quad depicts upland forested areas as well open areas, and open waters within the project area boundary. USA Topo Map
  - g. National Wetland Inventory (NWI): NWI depicts the delineated boundaries of the Jurisdictional Wetlands as forested uplands. Onsite impoundments and the upland excavated ornamental pond are depicted as PUBHx. The locations of the upland excavated ditches are depicted as uplands on the NWI map.  
<https://fwspublicservices.wim.usgs.gov/wetlandsmapservice/rest/services/Wetlands/MapServer/0>
10. OTHER SUPPORTING INFORMATION. Previous Approved Jurisdictional Determinations (AJDs) for the project area documented under SAC-2003-35273 dated March 7, 2005, and August 3, 2011, and SAC-2011-01408 dated January 24, 2020.
11. NOTE: The structure and format of this MFR were developed in coordination with the EPA and Department of the Army. The MFR's structure and format may be subject to future modification or may be rescinded as needed to implement additional guidance from the agencies; however, the approved jurisdictional determination described herein is a final agency action.





**TBC**  
THE BRIGMAN CO.

## Approved Jurisdictional Determination Exhibit

Rum Bluff - River Haven Property  
Longs, Horry County, SC  
Rev1: November 12, 2024



1" = 500'