



DEPARTMENT OF THE ARMY
U.S. ARMY CORPS OF ENGINEERS, CHARLESTON DISTRICT
69A HAGOOD AVE
CHARLESTON, SOUTH CAROLINA 29403

January 8, 2024

Regulatory Division



Dear [REDACTED]

This is in response to your request for an Approved Jurisdictional Determination (AJD) (SAC-2023-00771) received in our office on June 5, 2023, for a 7.1-acre site located at 1127 Hamlin Road, Mount Pleasant, Charleston County, South Carolina (Latitude: 32.8528°, Longitude: -79.8017°). An AJD is used to indicate the Corps has identified the presence or absence of wetlands and/or other aquatic resources on a site, including their accurate location(s) and boundaries, as well as their jurisdictional status pursuant to Section 404 of the Clean Water Act (CWA) (33 U.S.C. § 1344) and/or navigable waters of the United States pursuant to Section 10 of the Rivers and Harbors Act of 1899 (RHA) (33 U.S.C. § 403).

The site in question is shown on the attached map entitled "Approximate Wetlands" and dated May 18, 2023 prepared by Sabine and Waters, Inc. Based on an on-site inspection, a review of aerial photography, topographic maps, National Wetlands Inventory maps, and soil survey information, and Wetland Determination Data Form(s), we conclude the site, as shown on the referenced map, does not contain any aquatic resources subject to Corps' jurisdiction under Section 404 of the CWA or Section 10 of the RHA.

The site contains 2.8 acres of freshwater wetlands as federally defined by the 1987 Corps of Engineers Wetland Delineation Manual and applicable regional supplement however, the 2.8 acres of freshwater wetlands are not considered subject to Corps' jurisdiction based upon U.S. Supreme Court decisions. The location and configuration of these non-jurisdictional areas are reflected on the above referenced map. It should be clearly noted that decisions of the U.S. Supreme Court to exclude certain waters and wetlands from federal jurisdiction under the CWA have no effect on any state or local government restrictions or requirements concerning wetlands. You are strongly cautioned to ascertain whether such restrictions or requirements exist for the area in question before undertaking any activity which might impact these aquatic resources.

Attached is a Memorandum for Record describing the basis of jurisdiction for the delineated area(s). Note that some or all of these areas may be regulated by other state or local government entities and you should contact the South Carolina Department of

Health and Environmental Control, Bureau of Water, or Department of Ocean and Coastal Resource Management, to determine the limits of their jurisdiction.

This AJD is valid for five (5) years from the date of this letter unless new information warrants revision before the expiration date. This AJD is an appealable action under the Corps of Engineers administrative appeal procedures defined at 33 CFR Part 331. The administrative appeal options, process and appeals request form is attached for your convenience and use.

This AJD was conducted pursuant to Corps of Engineers' regulatory authority to identify the limits of Corps of Engineers' jurisdiction for the particular site identified in this request. This AJD may not be valid for the wetland conservation provisions of the Food Security Act of 1985. If you or your tenant are USDA program participants, or anticipate participation in USDA programs, you should request a certified wetland determination from the local office of the Natural Resources Conservation Service, prior to starting work.

In all future correspondence, please refer to file number SAC-2023-00771. A copy of this letter is forwarded to State and/or Federal agencies for their information. If you have any questions, please contact [REDACTED], Project Manager, at [REDACTED]

Sincerely,

[REDACTED]

Attachments:
Memorandum for Record
Notification of Appeal Options
"Approximate Wetlands" Map

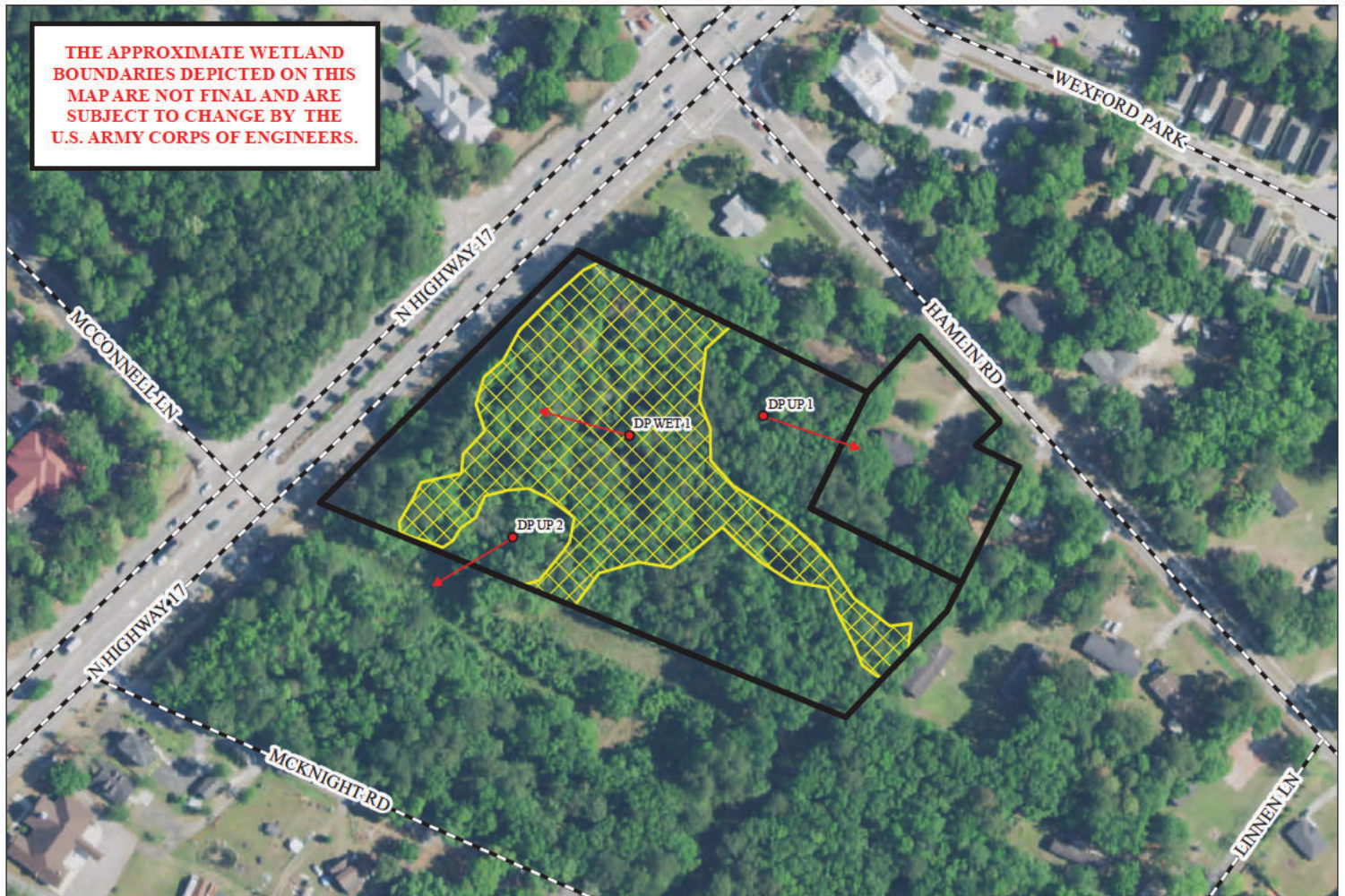
Copies Furnished:



SCDHEC – Bureau of Water
2600 Bull Street
Columbia, South Carolina 29201
WQCWetlands@dhec.sc.gov

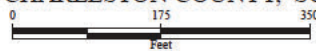
SCDHEC - OCRM
1362 McMillan Avenue, Suite 400
North Charleston, South Carolina 29405
OCRMPermitting@dhec.sc.gov

THE APPROXIMATE WETLAND
BOUNDARIES DEPICTED ON THIS
MAP ARE NOT FINAL AND ARE
SUBJECT TO CHANGE BY THE
U.S. ARMY CORPS OF ENGINEERS.



EXTERNAL SOURCES: NAIP 2021 TRUE COLOR AERIAL, U.S. CENSUS ROADS
CHARLESTON COUNTY GIS PARCELS
Created By: Stephen Boussett
Date Created: May 17, 2023
Copyright 2023 Sabine & Waters, Inc.
R:\charleston\gis\external\wetlands\map.mxd
http://www.sabine.com
Disclaimer: This map is a graphic representation of data obtained from various
sources. All efforts have been made to warrant the accuracy of this map. However, no
Sabine & Waters, Inc. warrants a representation and liability for the use of this map.
REVISED: 5/18/2023

APPROXIMATE WETLANDS ELLISON - MANIGUALT PALMER TRACT CHARLESTON COUNTY, SC



LEGEND	
	PROPERTY BOUNDARY: +/- 7.1 AC
	APPROXIMATE NON-JD WETLANDS: +/- 2.8
	AC PHOTO DIRECTION
	DATA POINTS
	ROADS
Long -79.801709 W Lat 32.852831 N	