

JOINT
PUBLIC NOTICE

CHARLESTON DISTRICT, CORPS OF ENGINEERS
69A Hagood Avenue
Charleston, South Carolina 20403-5107

REGULATORY DIVISION
Refer to: P/N SAC-2021-00646

April 16, 2021

Pursuant to Section 10 of the Rivers and Harbors Act of 1899 (33 U.S.C. 403) and Sections 401 and 404 of the Clean Water Act (33 U.S.C. 1341), a prospectus has been submitted to the Department of the Army and the South Carolina Interagency Review Team by

SCP CATAWBA
ATTN: WADE WALTMYER
2570 COMMERCE PARKWAY
NORTH PORT, FLORIDA 34289

for a proposal to establish and operate a wetland and stream mitigation bank that is adjacent to the

CATAWBA RIVER

at a location approximately 4 miles south/southwest of Richburg, SC on the west side of I77. Main entrance is located at the intersection of wilderness rd. and old mill rd., Chester County, South Carolina (Latitude: 34.668399 °, Longitude: -81.043223 °), Richburg U.S. Geological Service Quadrangle sheets.

In order to give all interested parties an opportunity to express their views

NOTICE

is hereby given that written statements regarding the proposed work will be received by the **Corps** until

30 Days from the Date of this Notice

from those interested in the activity and whose interests may be affected by the proposed work.

The proposed project consists of establishing a freshwater wetland and stream mitigation bank in the Lower Catawba watershed (8-digit Hydrologic Unit Codes 03050103). The proposed 623 acre mitigation site includes approximately 28.3 acres of freshwater wetlands and 48,294 linear feet (lf) of non-wetland waters.

The proposal is to preserve approximately 38,429 lf of streams and 12.47 acres of palustrine forested wetlands. In addition, 15.53 acres of freshwater wetlands will be enhanced through removal of loblolly pine and replanted in native species. 11,766 lf of stream will be restored/enhanced through removal of two dams and priority one restoration utilizing natural channel design techniques. This includes channel re-alignment, construction of new channels, and bank stabilization. An upland buffer will be placed around all stream resources. The bank sponsor, using a conservation easement, will protect the bank site.

NOTE: This public notice and associated plans are available on the Corps' website at:
<http://www.sac.usace.army.mil/Missions/Regulatory/PublicNotices> .

Also, according to the Prospectus, the proposed mitigation bank will provide in-kind compensatory mitigation for authorized impacts to aquatic resources. The work required to complete the proposed activities on the mitigation site may be authorized under Nationwide Permit #27 after reviews by the Corps, the South Carolina Department of Health and Environmental Control, and the Interagency Review Team.

The District Engineer has concluded that the discharges associated with this project, both direct and indirect, should be reviewed by the South Carolina Department of Health and Environmental Control in accordance with provisions of Section 401 of the Clean Water Act. The applicant is hereby advised that supplemental information may be required by the State to facilitate the review.

This notice initiates the Essential Fish Habitat (EFH) consultation requirements of the Magnuson-Stevens Fishery Conservation and Management Act. Implementation of the proposed project would impact 0 acres of estuarine substrates and emergent wetlands utilized by various life stages of species comprising the shrimp, and snapper-grouper management complexes. The District Engineer's initial determination is that the proposed action would not have a substantial individual or cumulative adverse impact on EFH or fisheries managed by the South Atlantic Fishery Management Council and the National Marine Fisheries Service (NMFS). The District Engineer's final determination relative to project impacts and the need for mitigation measures is subject to review by and coordination with the NMFS.

Pursuant to the Section 7 of the Endangered Species Act of 1973 (as amended), the Corps has reviewed the project area, examined all information provided by the applicant, and the District Engineer has determined, based on the most recently available information that the Red-Cockaded woodpecker, *Picoides borealis*, a federally endangered species, and Carolina Heelsplitter, *Lasmigona decorata*, a Federally endangered species is present in the vicinity of the project. It has been determined that the project will have no effect on Red-Cockaded woodpecker, *Picoides borealis*, and will not result in the destruction or adverse modification of designated or proposed critical habitat of this species. Additionally, the Corps has reviewed the project area, examined all information provided by the applicant, and the District Engineer has determined that the project is not likely to adversely affect the Carolina Heelsplitter, *Lasmigona decorata* or result in the destruction or adverse modification of designated or proposed critical habitat of this species. This public notice serves as a request for written concurrence from the U.S. Fish and Wildlife Service and/or the National Marine Fisheries Service on this determination.

Pursuant to Section 106 of the National Historic Preservation Act (NHPA), this public notice also constitutes a request to Indian Tribes to notify the District Engineer of any historic

properties of religious and cultural significance to them that may be affected by the proposed undertaking.

:

In accordance with Section 106 of the NHPA, the District Engineer has consulted South Carolina ArchSite (GIS), for the presence or absence of historic properties (as defined in 36 C.F.R. 800.16)(1)(1)), and has initially determined that no historic properties are present; therefore, there will be no effect on historic properties. To ensure that other historic properties that the District Engineer is not aware of are not overlooked, this public notice also serves as a request to the State Historic Preservation Office and any other interested parties to provide any information they may have with regard to historic properties. This public notice serves as a request for concurrence within 30 days from the SHPO (and/or Tribal Historic Preservation Officer).

The District Engineer's final eligibility and effect determination will be based upon coordination with the SHPO and/or THPO, as appropriate and required and with full consideration given to the proposed undertaking's potential direct and indirect effects on historic properties within the Corps-identified permit area.

Any person may request, in writing, within the comment period specified in this notice, that a public hearing be held to consider this application. Requests for a public hearing shall state, with particularity, the reasons for holding a public hearing.

The decision whether to issue a permit will be based on an evaluation of the probable impact including cumulative impacts of the activity on the public interest. The benefit which reasonably may be expected to accrue from the project must be balanced against its reasonably foreseeable detriments. All factors which may be relevant to the project will be considered including the cumulative effects thereof; among those are conservation, economics, aesthetics, general environmental concerns, wetlands, historic properties, fish and wildlife values, flood hazards, flood plain values, land use, navigation, shoreline erosion and accretion, recreation, water supply and conservation, water quality, energy needs, safety, food and fiber production and, in general, the needs and welfare of the people. A permit will be granted unless the District Engineer determines that it would be contrary to the public interest. In cases of conflicting property rights, the Corps cannot undertake to adjudicate rival claims.

The Corps is soliciting comments from the public; Federal, state, and local agencies and officials; Indian Tribes; and other interested parties in order to consider and evaluate the impacts of this activity. Any comments received will be considered by the Corps to determine whether to issue, modify, condition or deny a permit for this project. To make this decision, comments are used to assess impacts on endangered species, historic properties, water quality, general environmental effects, and the other public interest factors listed above. Comments are used in the preparation of an Environmental Assessment and/or an Environmental Impact Statement pursuant to the National Environmental Policy Act. Comments are also used to determine the need for a public hearing and to determine the overall public interest of the activity. **Please submit comments in writing, identifying the project of interest by public notice number, to the following address:**

**U.S. Army Corps of Engineers
ATTN: REGULATORY DIVISION
69A Hagood Avenue
Charleston, South Carolina 29403**

The Prospectus for the proposed mitigation bank is available for review upon request. If there are any questions concerning this public notice, please contact David B. Wilson at (843) 329-8026 or by email at David.B.Wilson@usace.army.mil.

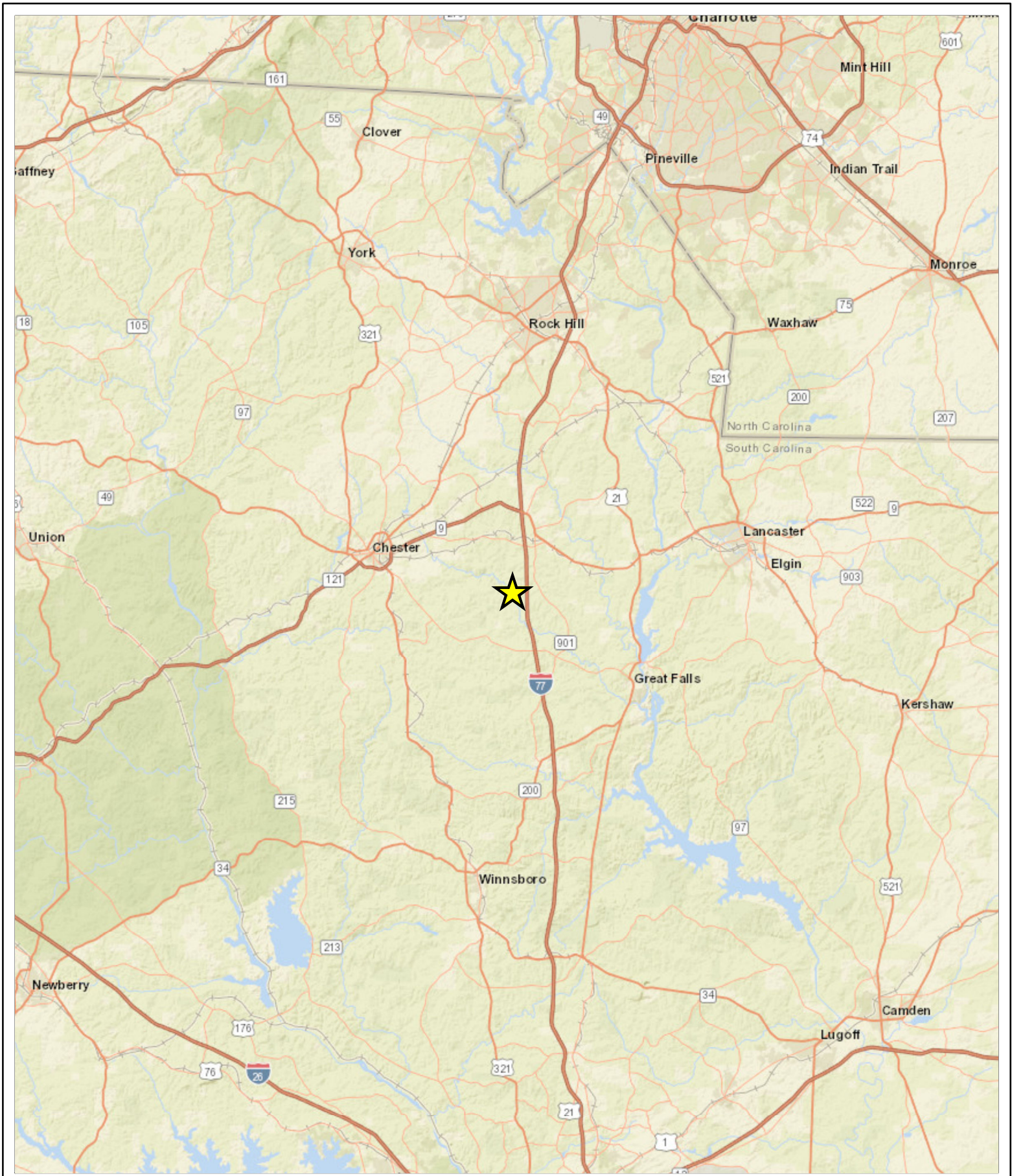
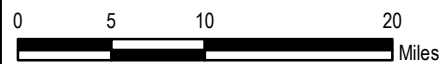


Figure 1: Vicinity Map

Catawba Mitigation Bank
 Chester County, South Carolina
 Source: ESRI
 Date: August 2020

1 inch = 10 miles



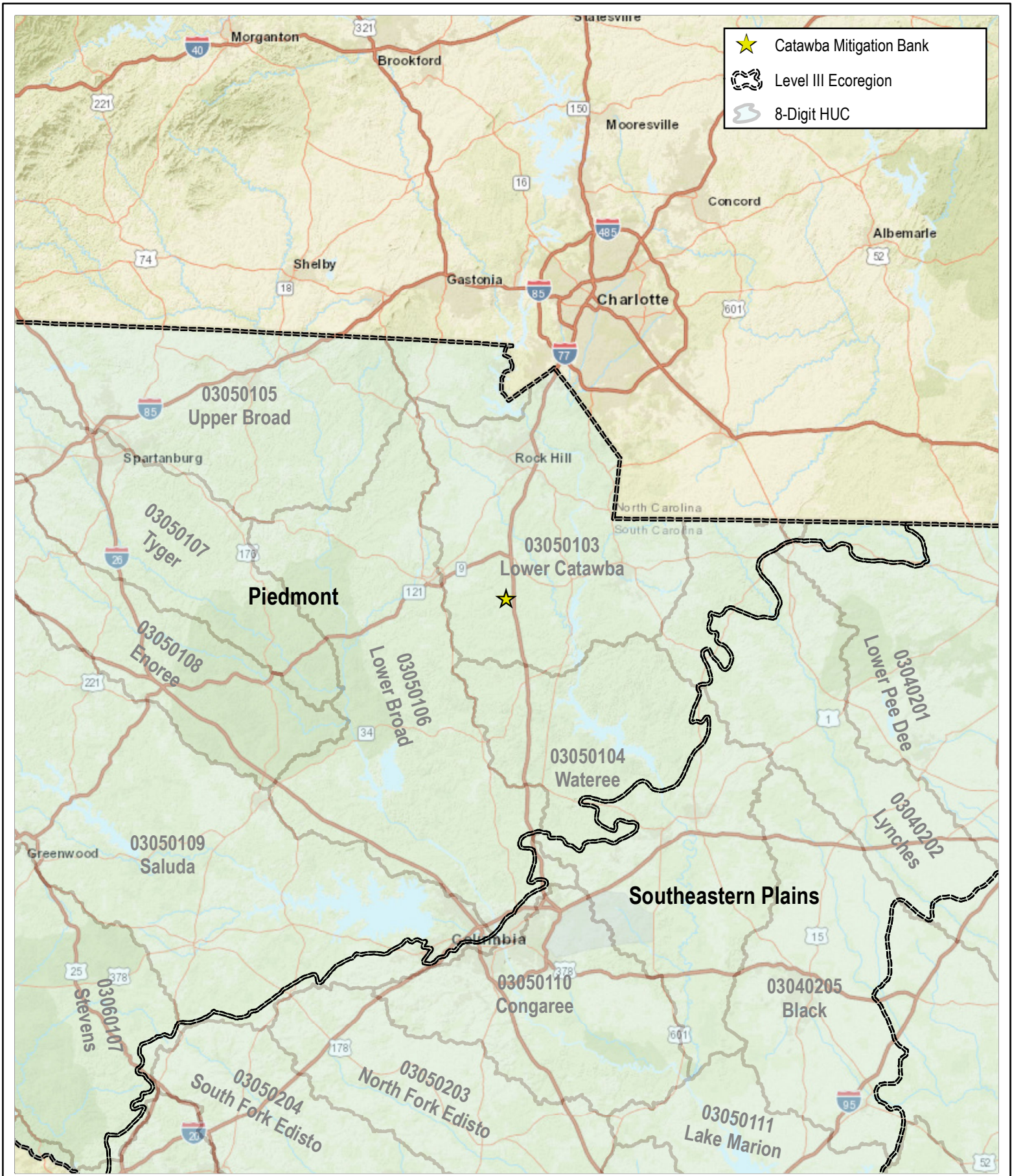
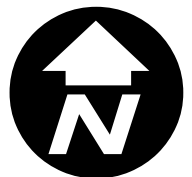
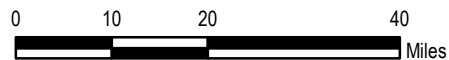


Figure 2:
8-Digit HUC and Level III Ecoregion Map

Catawba Mitigation Bank
 Chester County, South Carolina
 Source: ESRI, USGS, EPA
 Date: August 2020

1 inch = 20 miles



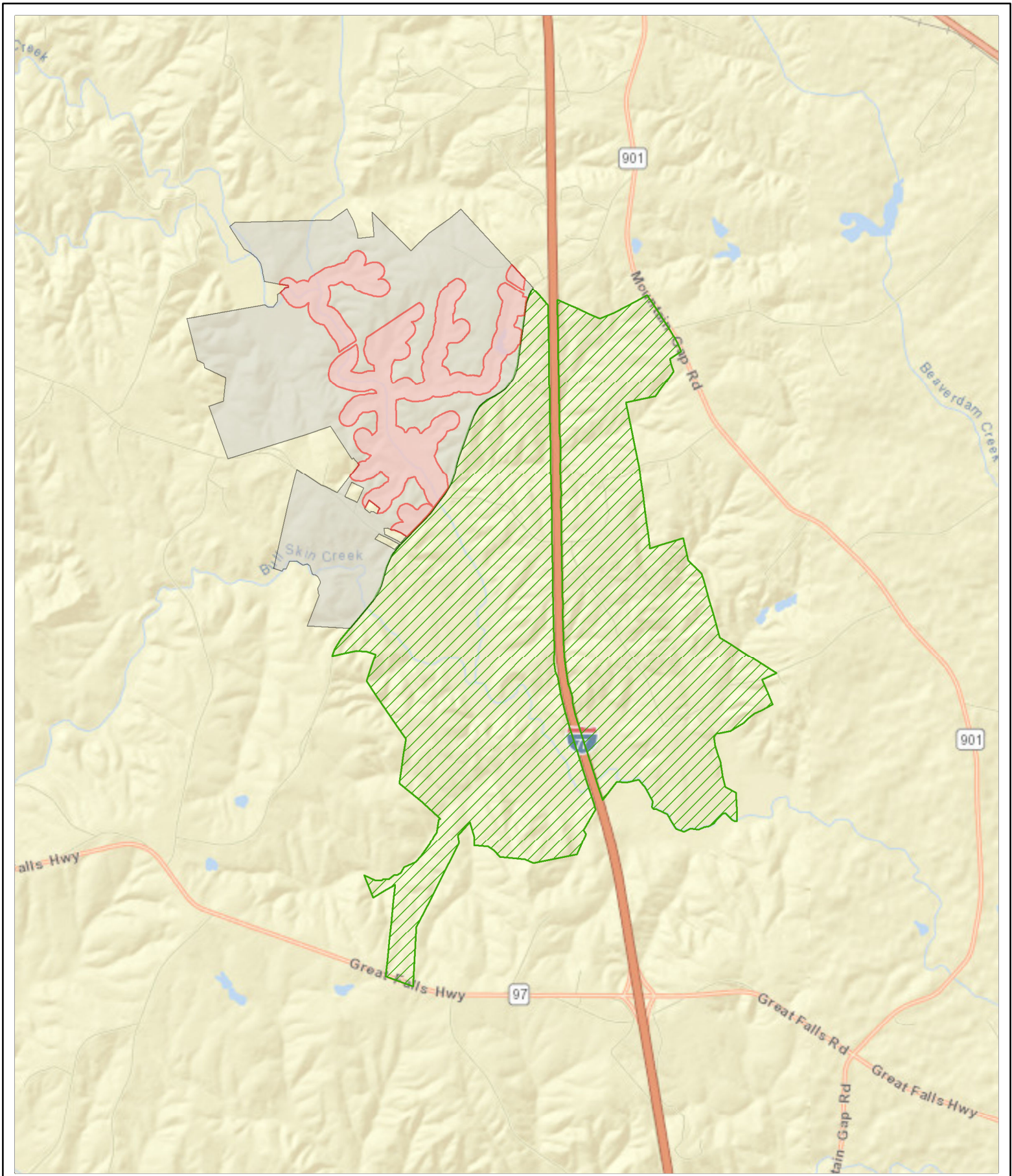


Figure 3: Bank Location Map

Catawba Mitigation Bank
 Chester, South Carolina
 Source: ESRI
 Date: September 2020

1 inch = 1 miles



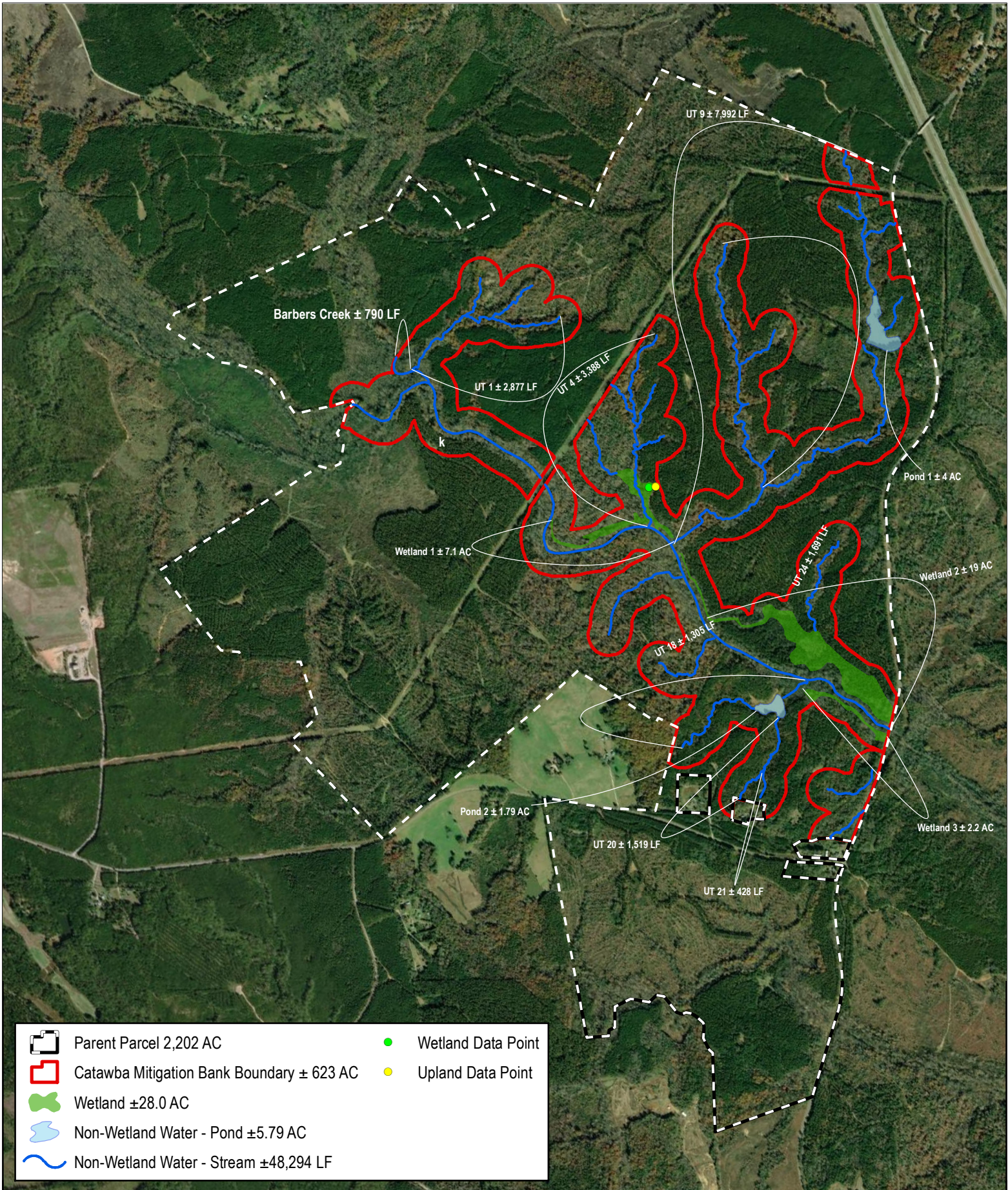


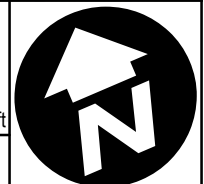
Figure 4:
Waters of the United States

Catawba Mitigation Bank
Chester County, SC
Source: ESRI
Date: August 2020

Notes:

0 750 1,500 3,000 4,500 6,000 Feet

1 in = 1,800 ft



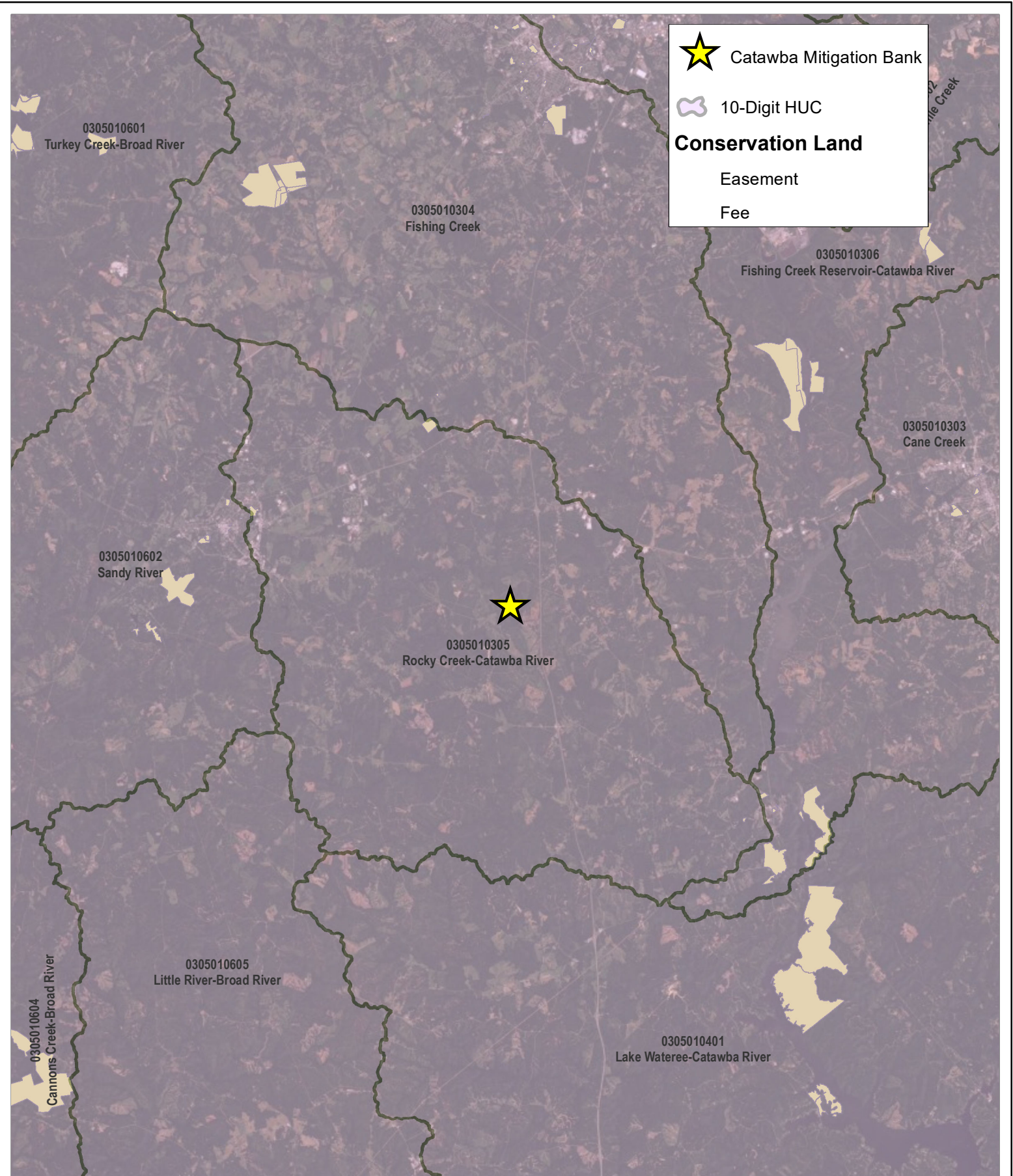
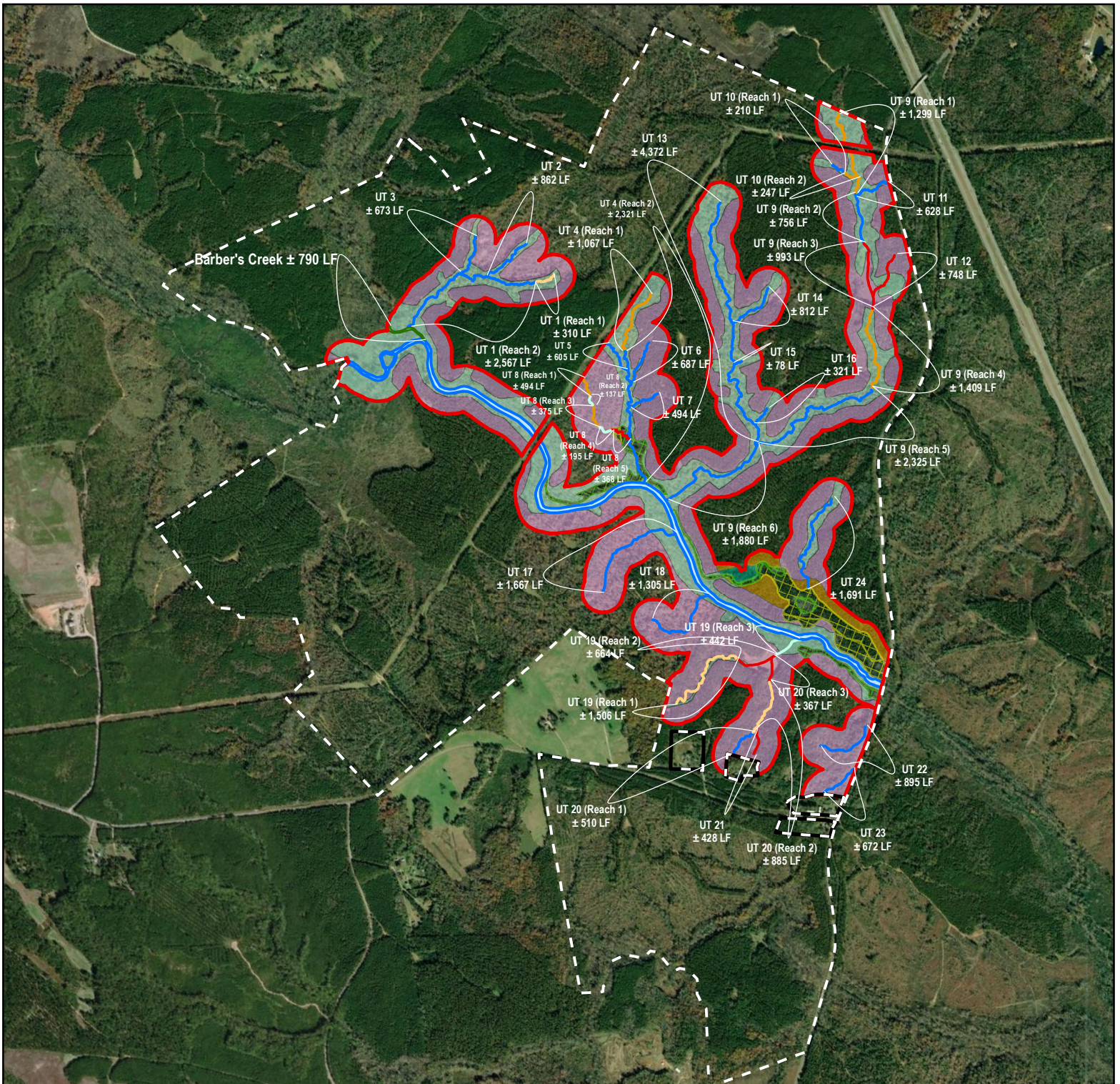


Figure 7: Rocky Creek Watershed Conservation Map

Catawba Mitigation Bank
 Chester, South Carolina
 Source: ESRI, USGS, SCDNR
 Date: August 2020

1 inch = 5 miles



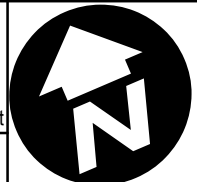
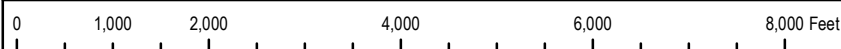


	Parent Parcel 2,202 AC		Stream Restoration (Re-Establishment) ± 3,568 LF
	Catawba Mitigation Bank Boundary ± 623 AC		Riparian Buffer Enhancement (planting) ± 368.65 AC
	Rocky Creek Preservation ± 11,308 LF		Riparian Buffer Enhancement (exotic invasives) ± 196.29 AC
	Barbers Creek Preservation ± 790 LF		Wetland Preservation ± 12.47 AC
	Stream Preservation ± 38,429 LF		Wetland Vegetation Enhancement ± 15.53 AC
	Stream Enhancement ± 774 LF		Upland Buffer Preservation ± 1.88 AC
	Stream Restoration (Lower NI) ± 2,701 LF		Upland Buffer Enhancement ± 12.24 AC
	Stream Restoration (Priority 1) ± 4,723 LF		



Figure 10:
Mitigation Unit Map
 Catawba Mitigation Bank
 Lower Catawba
 Chester County, SC
 Source: ESRI
 Date: May 2020

Notes:



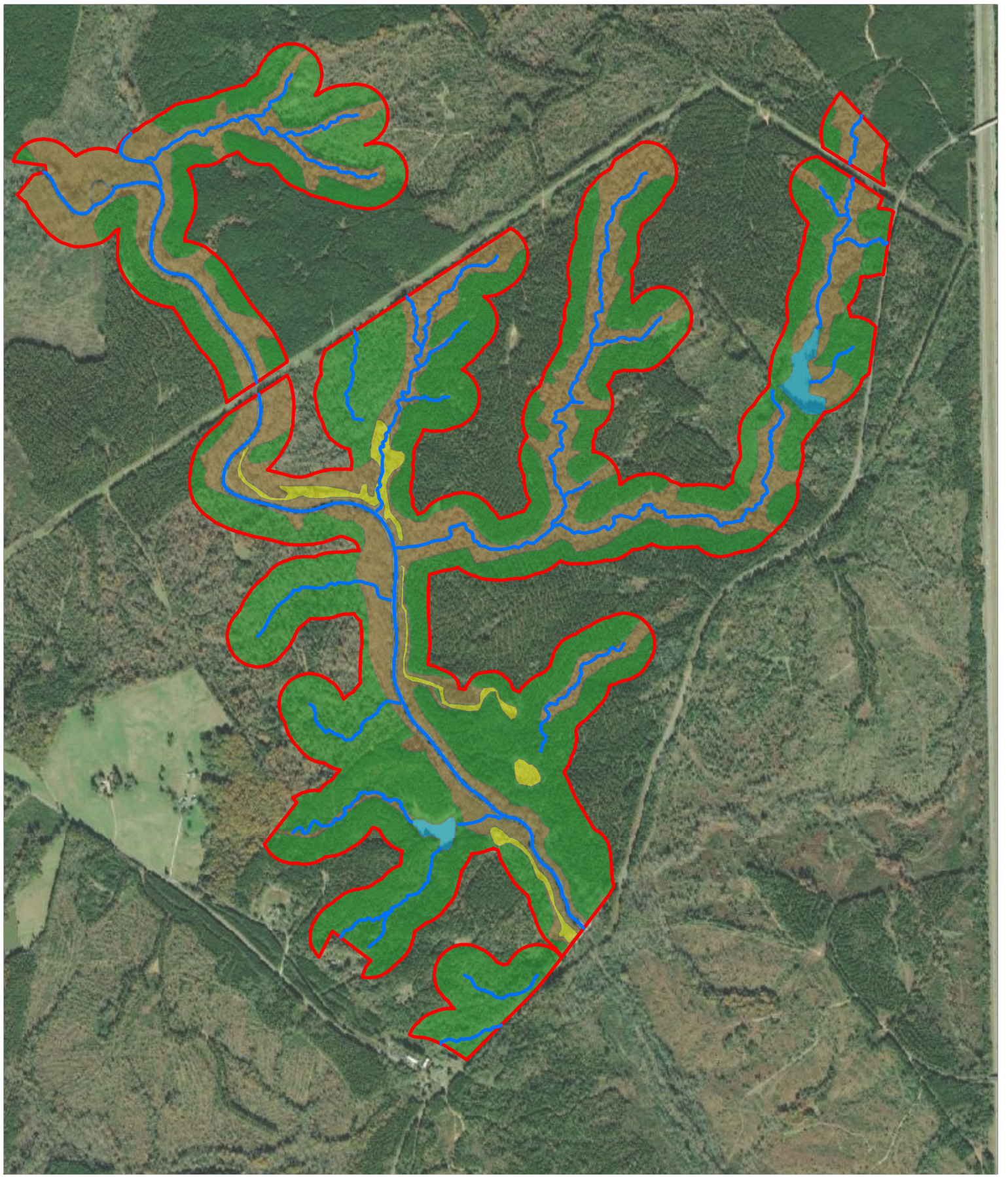
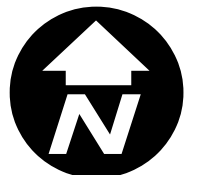
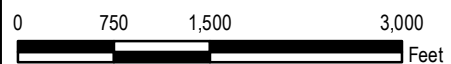


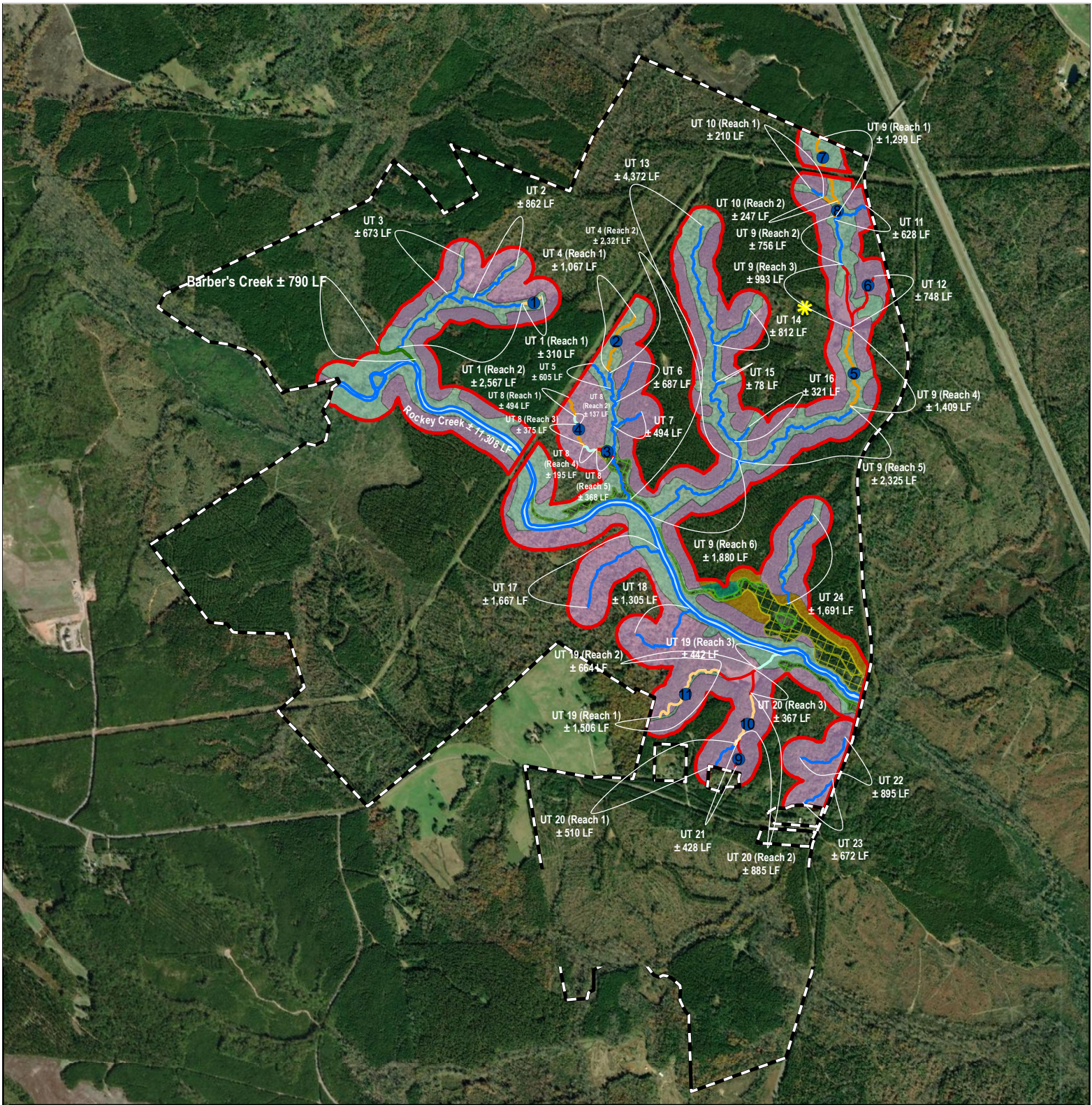
Figure 13: Vegetation Community Map

Catawba Mitigation Bank
Chester County, South Carolina
Source: ESRI
Date: August 2020

1 inch = 1,500 feet



Palustrine Group

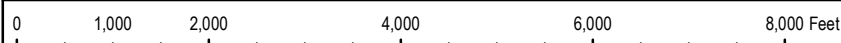


- | | | | | | |
|--|---|--|---|--|---|
| | Parent Parcel 2,202 AC | | Stream Restoration (Lower NI) ± 2,701 LF | | Wetland Vegetation Enhancement ± 15.54 AC |
| | Catawba Mitigation Bank Boundary ± 623 AC | | Stream Restoration (Priority 1) ± 4,723 LF | | Upland Buffer Preservation ± 1.88 AC |
| | Rocky Creek Preservation ± 11,308 LF | | Stream Restoration (Re-Establishment) ± 3,568 LF | | Upland Buffer Enhancement ± 12.24 AC |
| | Barbers Creek Preservation ± 790 LF | | Riparian Buffer Enhancement (planting) ± 368.65 AC | | Rain Gauge |
| | Stream Preservation ± 38,429 LF | | Riparian Buffer Preservation (exotic invasives) ± 196.29 AC | | Stream Gauge |
| | Stream Enhancement ± 774 LF | | Wetland Preservation ± 12.47 AC | | |



Figure 14:
Baseline Monitoring Map
 Catawba Mitigation Bank
 Lower Catawba
 Chester County, SC
 Source: ESRI
 Date: May 2020

Notes:



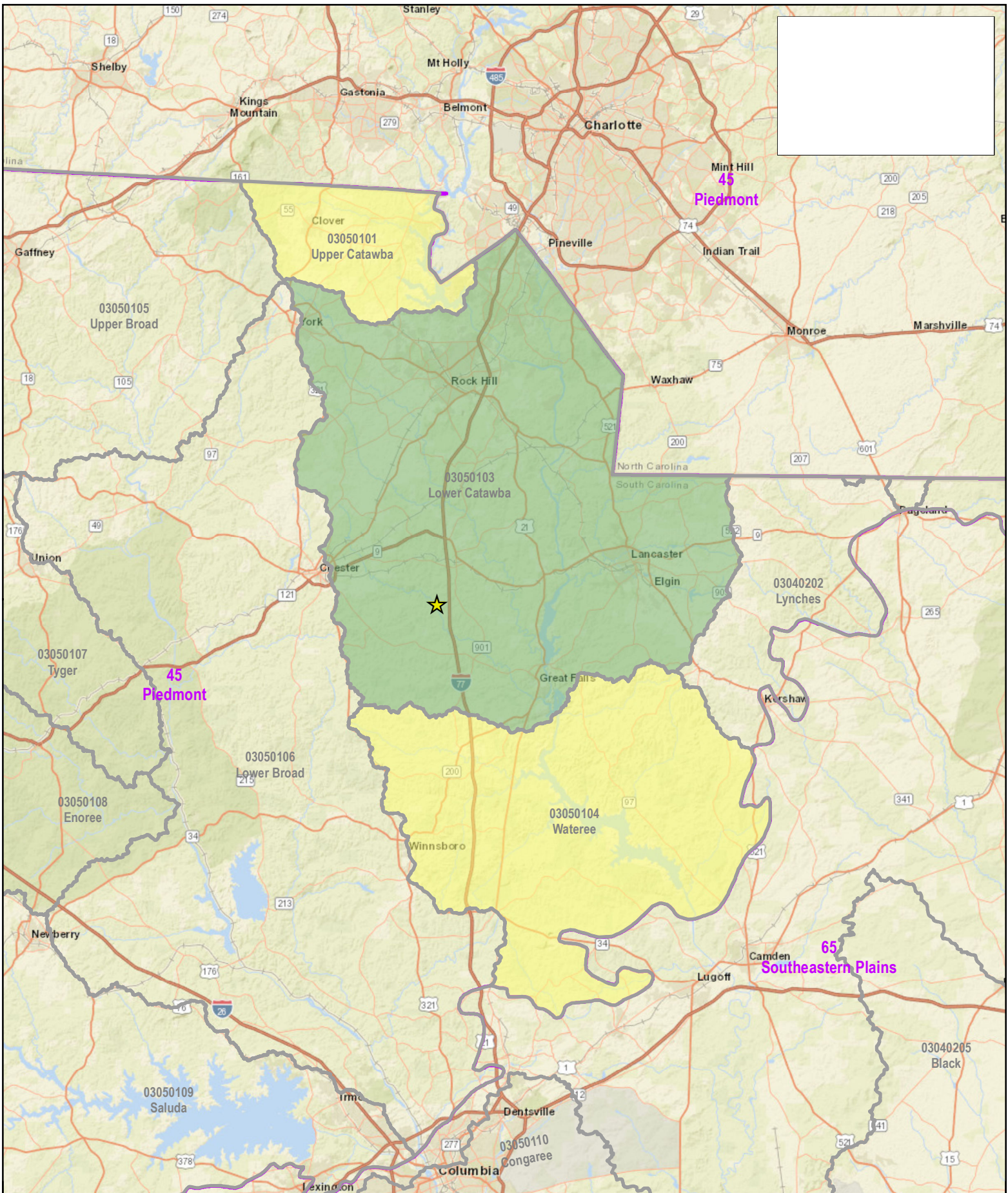


Figure 15:
Service Area Map
 Catawba Mitigation Bank
 Lower Catawba
 Chester County, SC
 Source: ESRI, EPA, USGS
 Date: August 2020

Notes:

1 in = 10 miles

0 5 10 20 30 40 Miles

