

JOINT
PUBLIC NOTICE

CHARLESTON DISTRICT, CORPS OF ENGINEERS
69A Hagood Avenue
Charleston, South Carolina 20403-5107

REGULATORY DIVISION
Refer to: P/N SAC-2011-01306

August 18, 2021

Pursuant to Section 10 of the Rivers and Harbors Act of 1899 (33 U.S.C. 403) and Sections 401 and 404 of the Clean Water Act (33 U.S.C. 1341), a Mitigation Banking Instrument has been submitted to the Department of the Army and the South Carolina Interagency Review Team by

RMC and Associates, LLC
161 Morning Lake Drive
Lexington, SC 29072

for a proposal to establish and operate a wetland and stream mitigation bank that is adjacent to

BEAVER CREEK

at a location near the intersection of Old Cherokee Road and Ashford Ferry Road in Fairfield County, South Carolina. (Latitude 34.4727090 N, Longitude 81.3204600 W)

In order to give all interested parties an opportunity to express their views

NOTICE

is hereby given that written statements regarding the proposed work will be received by the **Corps** until

30 Days from the Date of this Notice

from those interested in the activity and whose interests may be affected by the proposed work.

Note, this proposed project was originally submitted and put on Notice on February 27, 2012. Any comments received from the February 27, 2012 Notice will no longer be considered. The proposed project consists of establishing a freshwater wetland and stream mitigation bank in the Lower Broad River watershed (8-digit Hydrologic Unit Codes 03050106). The proposed 73.61 acre mitigation site includes approximately 3.36 acres of freshwater wetlands and 6,846 linear feet (lf) of non-wetland waters.

The proposal is to preserve 3,127 lf of headwater tributaries and 3.4 acres of palustrine forested wetlands through the permanent protection of a conservation easement. In addition, 3,884 lf of stream will be restored/enhanced through priority one and two restoration utilizing natural channel design techniques. This includes channel re-alignment, construction of new channels, and bank stabilization. Additionally, 743 lf of streams will be enhanced through Priority 4 restoration techniques, including bank stabilization. An upland buffer will be placed around stream resources. The bank sponsor, using a conservation easement, will protect the entire bank site.

NOTE: This public notice and associated plans are available on the Corps' website at:
<http://www.sac.usace.army.mil/Missions/Regulatory/PublicNotices> .

Also, according to the Mitigation Banking Instrument, the proposed mitigation bank will provide in-kind compensatory mitigation for authorized impacts to aquatic resources. The work required to complete the proposed activities on the mitigation site may be authorized under Nationwide Permit #27 after reviews by the Corps, the South Carolina Department of Health and Environmental Control, and the Interagency Review Team.

The District Engineer has concluded that the discharges associated with this project, both direct and indirect, should be reviewed by the South Carolina Department of Health and Environmental Control in accordance with provisions of Section 401 of the Clean Water Act. The applicant is hereby advised that supplemental information may be required by the State to facilitate the review.

This notice initiates the Essential Fish Habitat (EFH) consultation requirements of the Magnuson-Stevens Fishery Conservation and Management Act. Implementation of the proposed project would impact 0 acres of estuarine substrates and emergent wetlands utilized by various life stages of species comprising the shrimp, and snapper-grouper management complexes. The District Engineer's initial determination is that the proposed action would not have a substantial individual or cumulative adverse impact on EFH or fisheries managed by the South Atlantic Fishery Management Council and the National Marine Fisheries Service (NMFS). The District Engineer's final determination relative to project impacts and the need for mitigation measures is subject to review by and coordination with the NMFS.

Pursuant to the Section 7 of the Endangered Species Act of 1973 (as amended), the Corps has reviewed the project area, examined all information provided by the applicant, and the District Engineer has determined, based on the most recently available information that the American wood Stork, *Mycteria americana*, a federally threatened species, Carolina heelsplitter, *Lasmogina decorata*, a Federally endangered species, Red-Cockaded Woodpecker, *Picoides borealis*, a Federally endangered species, and Northern long-eared bat, *Myotis septentrionalis*, a federally threatened species, is present in the vicinity of the project. It has been determined that the project will have no effect on American Wood Stork, Red-Cockaded Woodpecker, Carolina heelsplitter, and Northern long-eared bat and will not result in the destruction or adverse modification of designated or proposed critical habitat of this species. This public notice serves as a request for written concurrence from the U.S. Fish and Wildlife Service and/or the National Marine Fisheries Service on this determination.

Pursuant to Section 106 of the National Historic Preservation Act (NHPA), this public notice also constitutes a request to Indian Tribes to notify the District Engineer of any historic properties of religious and cultural significance to them that may be affected by the proposed undertaking.

In accordance with Section 106 of the NHPA, the District Engineer has consulted South Carolina ArchSite (GIS), for the presence or absence of historic properties (as defined in 36 C.F.R. 800.16)(1)(1)), and has initially determined that **no historic properties are present; therefore, there will be no effect on historic properties.** To ensure that other historic properties that the District Engineer is not aware of are not overlooked, this public notice also serves as a request to the State Historic Preservation Office and other interested parties to provide any information they may have with regard to historic properties. This public notice serves as a request for concurrence within 30 days from the SHPO (and/or Tribal Historic Preservation Officer).

The District Engineer's final eligibility and effect determination will be based upon coordination with the SHPO and/or THPO, as appropriate and required and with full consideration given to the proposed undertaking's potential direct and indirect effects on historic properties within the Corps-identified permit area.

Any person may request, in writing, within the comment period specified in this notice, that a public hearing be held to consider this application. Requests for a public hearing shall state, with particularity, the reasons for holding a public hearing.

The decision whether to issue a permit will be based on an evaluation of the probable impact including cumulative impacts of the activity on the public interest. The benefit which reasonably may be expected to accrue from the project must be balanced against its reasonably foreseeable detriments. All factors which may be relevant to the project will be considered including the cumulative effects thereof; among those are conservation, economics, aesthetics, general environmental concerns, wetlands, historic properties, fish and wildlife values, flood hazards, flood plain values, land use, navigation, shoreline erosion and accretion, recreation, water supply and conservation, water quality, energy needs, safety, food and fiber production and, in general, the needs and welfare of the people. A permit will be granted unless the District Engineer determines that it would be contrary to the public interest. In cases of conflicting property rights, the Corps cannot undertake to adjudicate rival claims.

The Corps is soliciting comments from the public; Federal, state, and local agencies and officials; Indian Tribes; and other interested parties in order to consider and evaluate the impacts of this activity. Any comments received will be considered by the Corps to determine whether to issue, modify, condition or deny a permit for this project. To make this decision, comments are used to assess impacts on endangered species, historic properties, water quality, general environmental effects, and the other public interest factors listed above. Comments are used in the preparation of an Environmental Assessment and/or an Environmental Impact Statement pursuant to the National Environmental Policy Act. Comments are also used to determine the need for a public hearing and to determine the overall public interest of the activity. **Please submit comments in writing, identifying the project of interest by public notice number, to the following address:**

**U.S. Army Corps of Engineers
ATTN: REGULATORY DIVISION
69A Hagood Avenue
Charleston, South Carolina 29403**

If there are any questions concerning this public notice, please contact David B. Wilson at (843) 329-8026 or by email at David.B.Wilson@usace.army.mil.

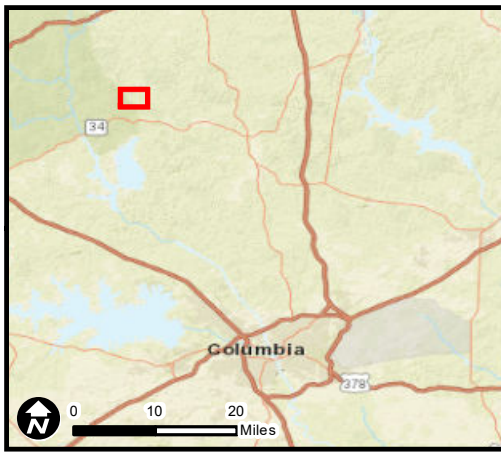







Figure 1. Site Location Map

Buckhead Road Mitigation Bank
Fairfield County, South Carolina

Legend

-  Project Study Area
-  Proposed Easement Boundary
-  Road Centerline
-  USGS Named Streams
-  USGS Flowline



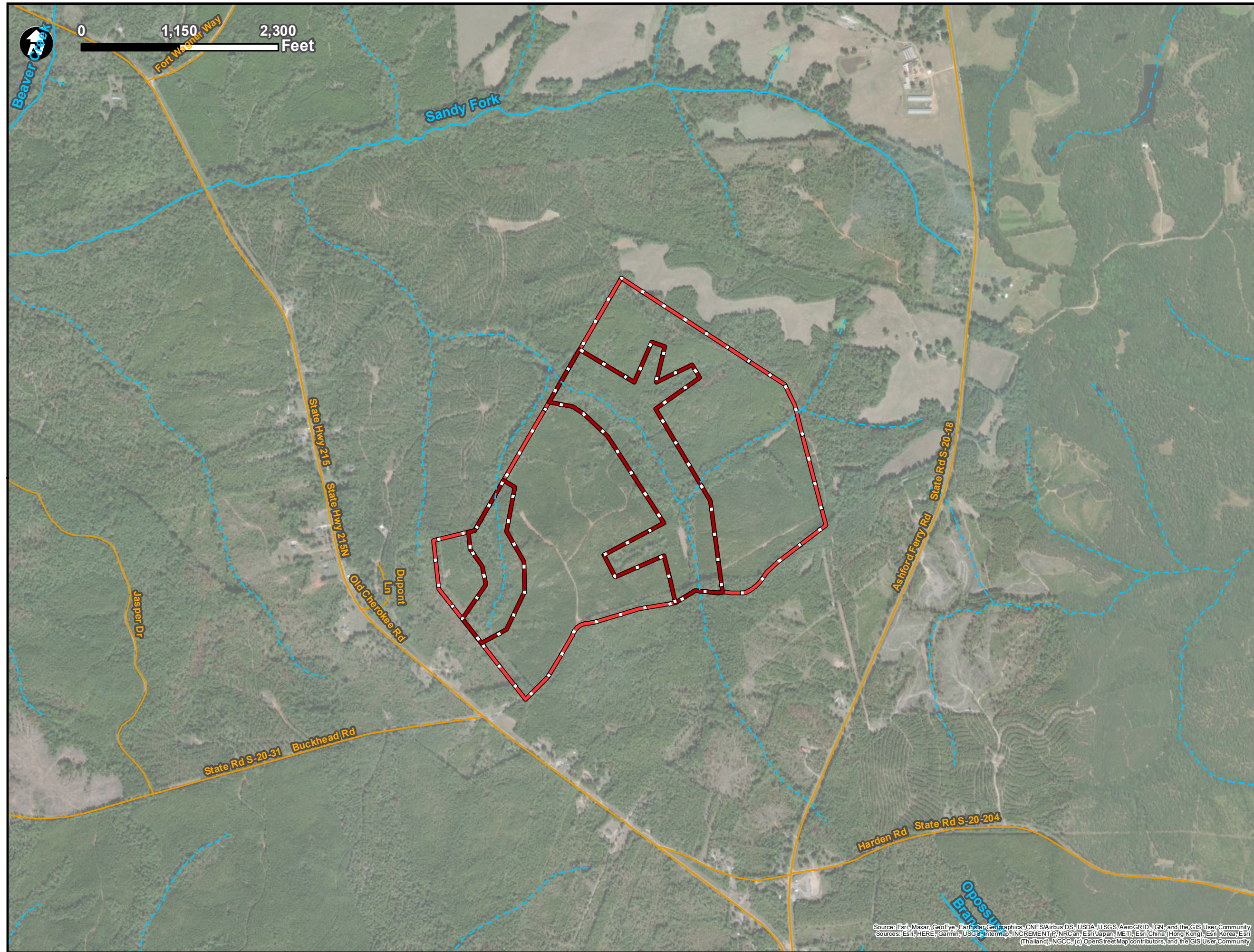
Job No. 6480200061

Drawn By: MEW

Reviewed By: BWS

Date: 9/14/2020

The map shown here has been created with all due and reasonable care and is strictly for use with Wood Environment & Infrastructure Solutions, Inc. (Wood) project number 6480200061. Wood assumes no liability, direct or indirect, whatsoever for any such third party or unintended use.



Source: Esri, Maxar, GeoEye, Earthstar Geographics, CNES/Airbus DS, USDA, USGS, AeroGRID, IGN, and the GIS User Community
Sources: Esri, HERE, Garmin, USGS, Intermap, INCREMENT P, NRCan, Esri Japan, METI, Esri China (Hong Kong), Esri Korea, Esri (Thailand), NGCC, (c) OpenStreetMap contributors, and the GIS User Community

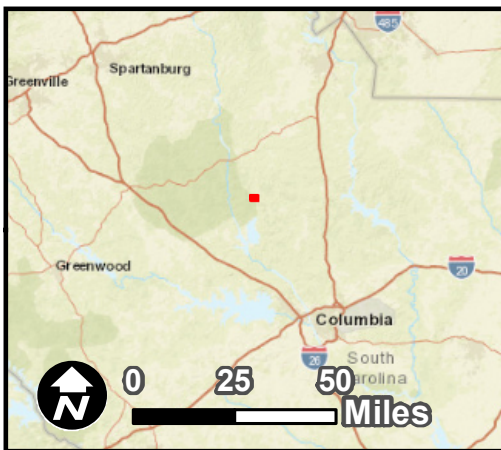


Figure 2. Aquatic Resources Map

Buckhead Road Mitigation Bank
Fairfield County, South Carolina

Legend

Project Study Area

Aquatic Resources

Non-wetland Water

Wetland



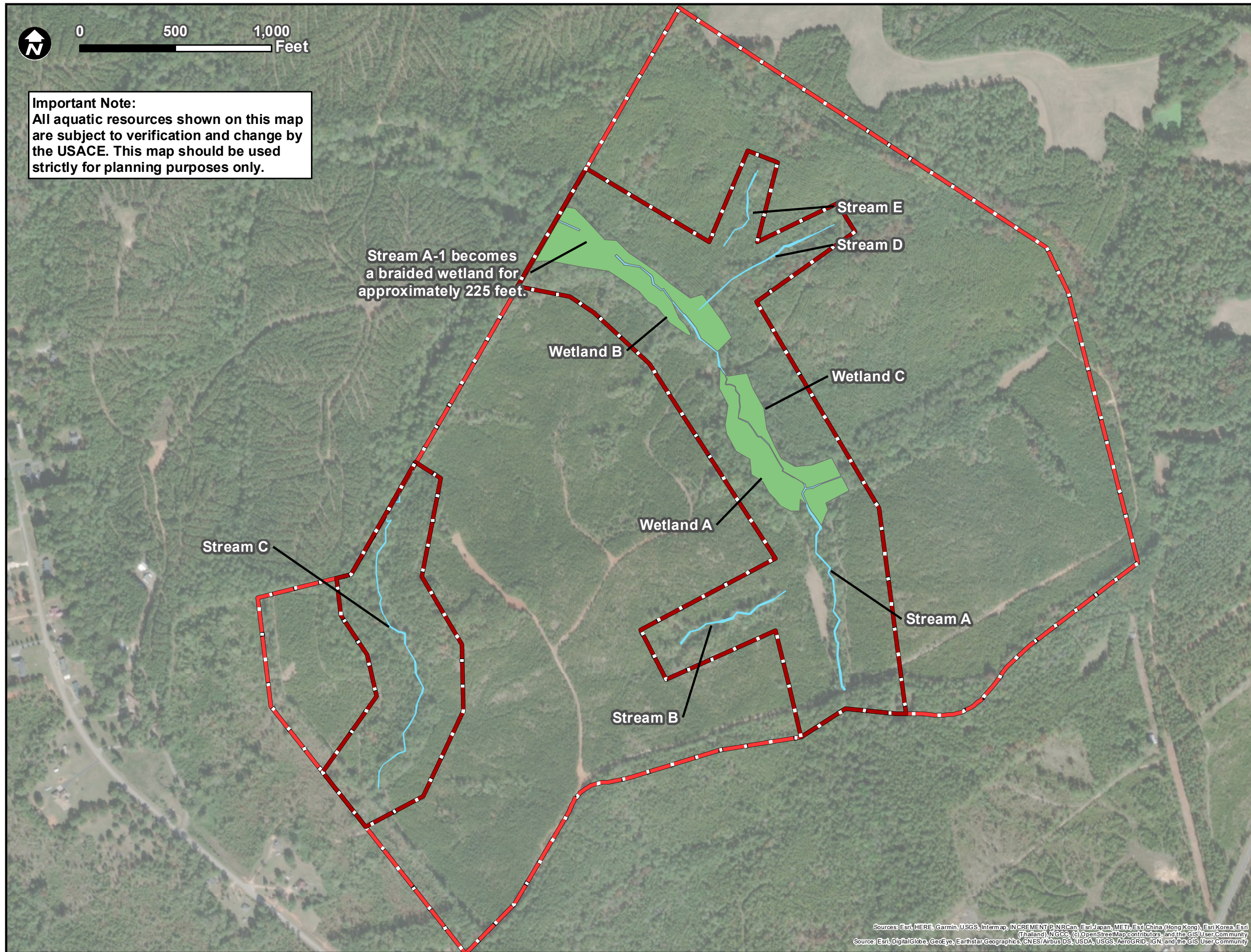
Job No. 6480200061

Drawn By: MEW

Reviewed By: BWS

Date: 9/14/2020

The map shown here has been created with all due and reasonable care and is strictly for use with Wood Environment & Infrastructure Solutions, Inc. (Wood) project number 6480200061. Wood assumes no liability, direct or indirect, whatsoever for any such third party or unintended use.



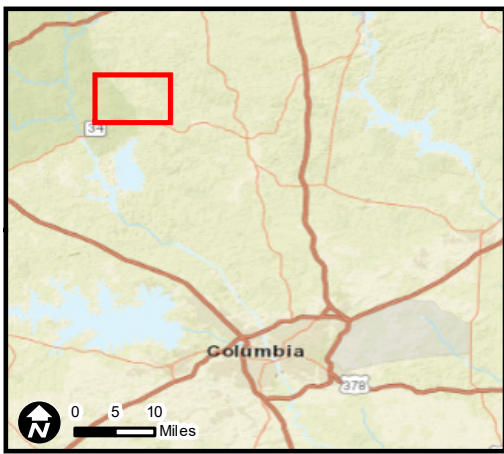


Figure 3. Proximity to Conserved Lands Map

Buckhead Road Mitigation Bank
Fairfield County, South Carolina

Legend

Project Study Area

Easement Boundary

Privately Protected Lands

USGS Protected Areas Database (PAD-US)

Sumter National Forest - Enoree Ranger District



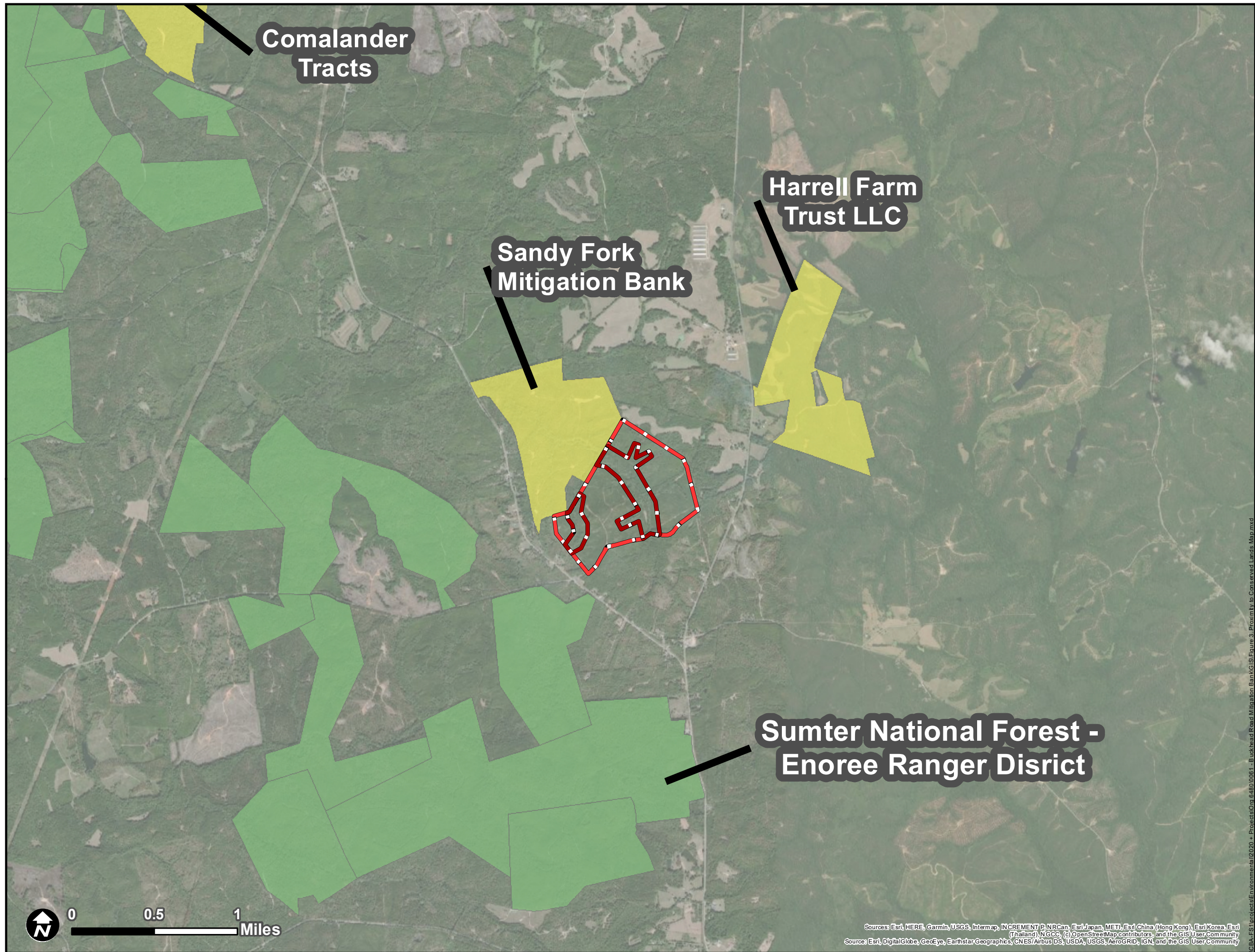
Job No. 6480200061

Drawn By: LNG

Reviewed By: BWS

Date: 9/14/2020

The map shown here has been created with all due and reasonable care and is strictly for use with Wood Environment & Infrastructure Solutions, Inc. (Wood) project number 6480200061. Wood assumes no liability, direct or indirect, whatsoever for any such third party or unintended use.



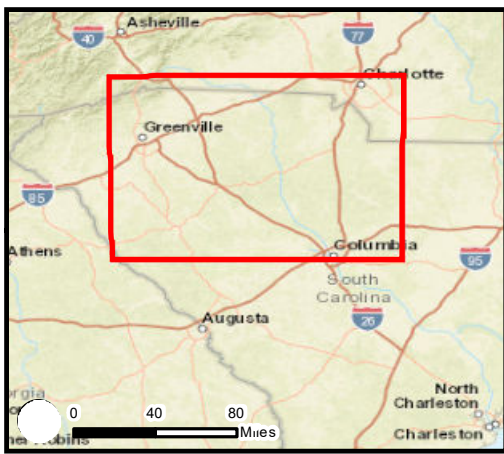







Figure 4. Service Area Map

Buckhead Road Mitigation Bank
Fairfield County, South Carolina

Legend

-  Project Study
-  State Boundary
-  Level III Ecoregion Break
-  Primary Watershed Service Area
-  Secondary Watershed Service Area



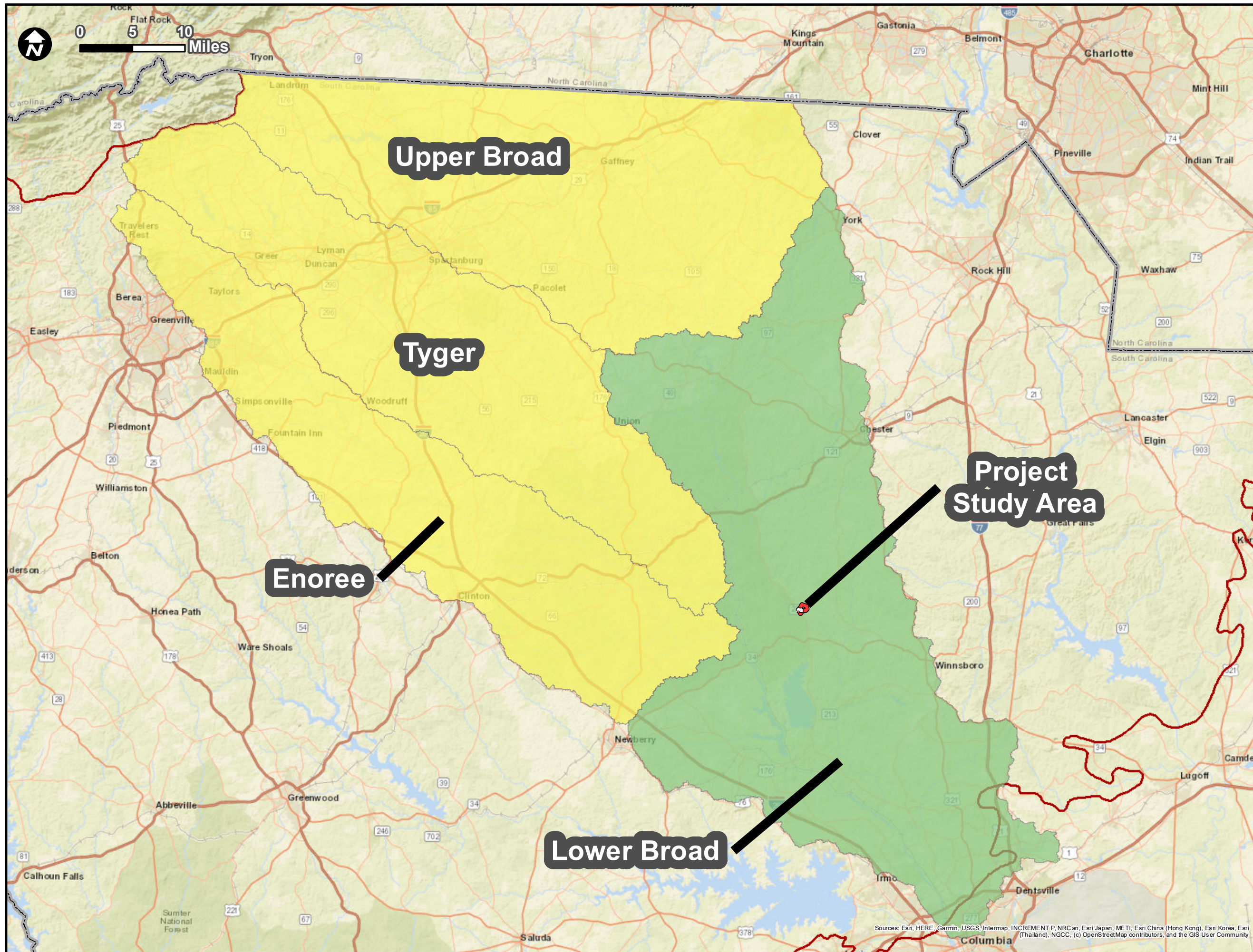
Job No. 6480200061

Drawn By: LNG

Reviewed By: BWS

Date: 8/14/2020

The map shown here has been created with all due and reasonable care and is strictly for use with Wood Environment & Infrastructure Solutions, Inc. (Wood) project number 6480200061. Wood assumes no liability, direct or indirect, whatsoever for any such third party or unintended use.



Sources: Esri, HERE, Garmin, USGS, Intermap, INCREMENT P, NRCan, Esri Japan, METI, Esri China (Hong Kong), Esri Korea, Esri (Thailand), NGCC, (c) OpenStreetMap contributors, and the GIS User Community

C:\Users\Madison.wichmann\Desktop\BRMB_Temp\Map Package\Figure 4 - Service Area Map.mxd

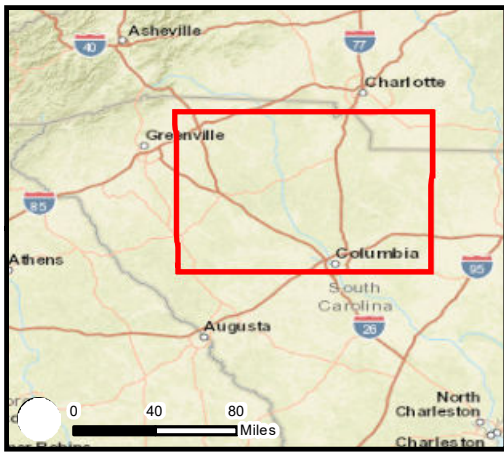





Figure 5. Watershed Map

Buckhead Road Mitigation Bank
Fairfield County, South Carolina

Legend

-  Project Study
-  Lower Broad Watershed (8-digit HUC)
-  Cannons Creek - Broad River (10-digit HUC)

wood.

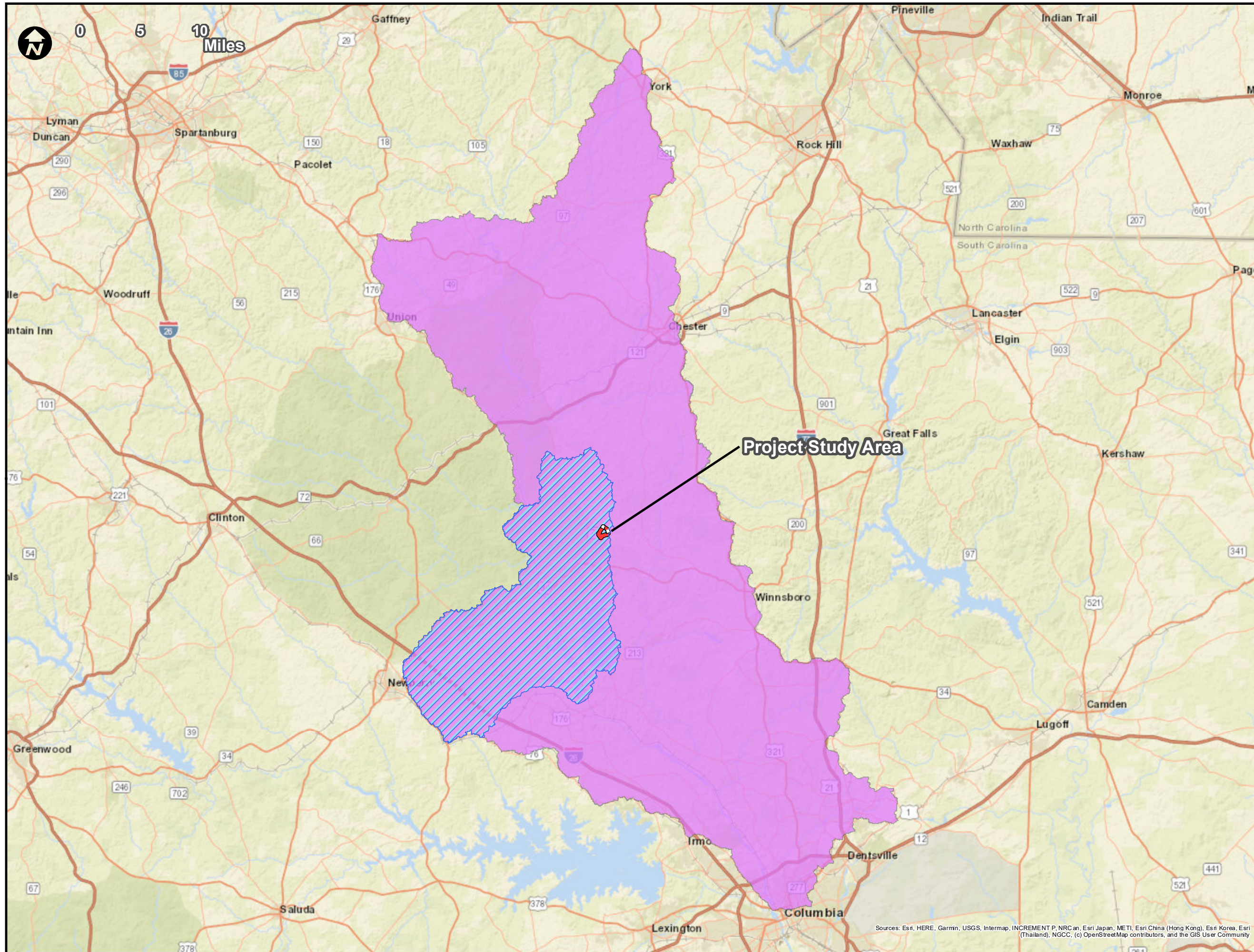
Job No. 6480200061

Drawn By: LNG

Reviewed By: BWS

Date: 8/14/2020

The map shown here has been created with all due and reasonable care and is strictly for use with Wood Environment & Infrastructure Solutions, Inc. (Wood) project number 6480200061. Wood assumes no liability, direct or indirect, whatsoever for any such third party or unintended use.



Sources: Esri, HERE, Garmin, USGS, Intermap, INCREMENT P, NRCan, Esri Japan, METI, Esri China (Hong Kong), Esri Korea, Esri (Thailand), NGCC, (c) OpenStreetMap contributors, and the GIS User Community

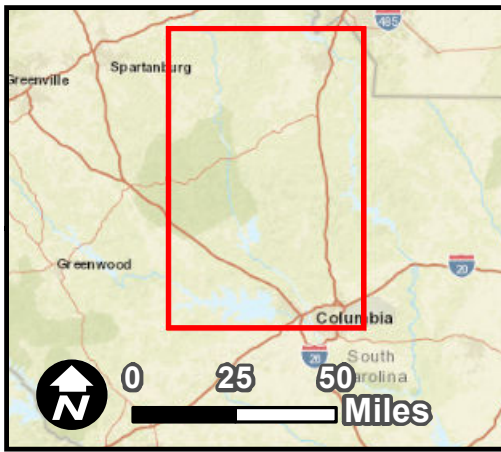




Figure 6a. NLCD 8-digit HUC

Buckhead Road Mitigation Bank
Fairfield County, South Carolina

Legend

-  Project Study Area
-  Lower Broad HUC 8

wood.

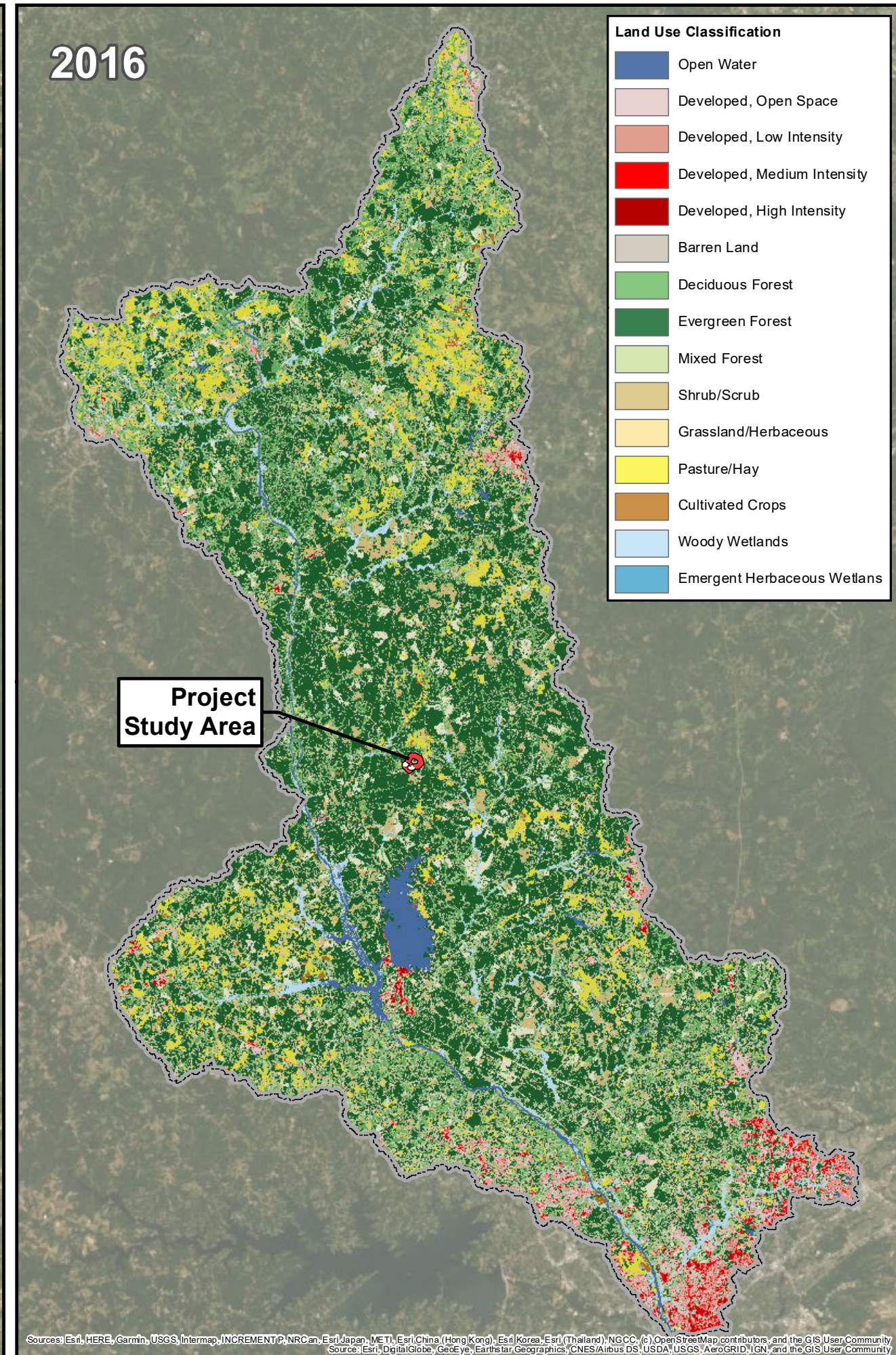
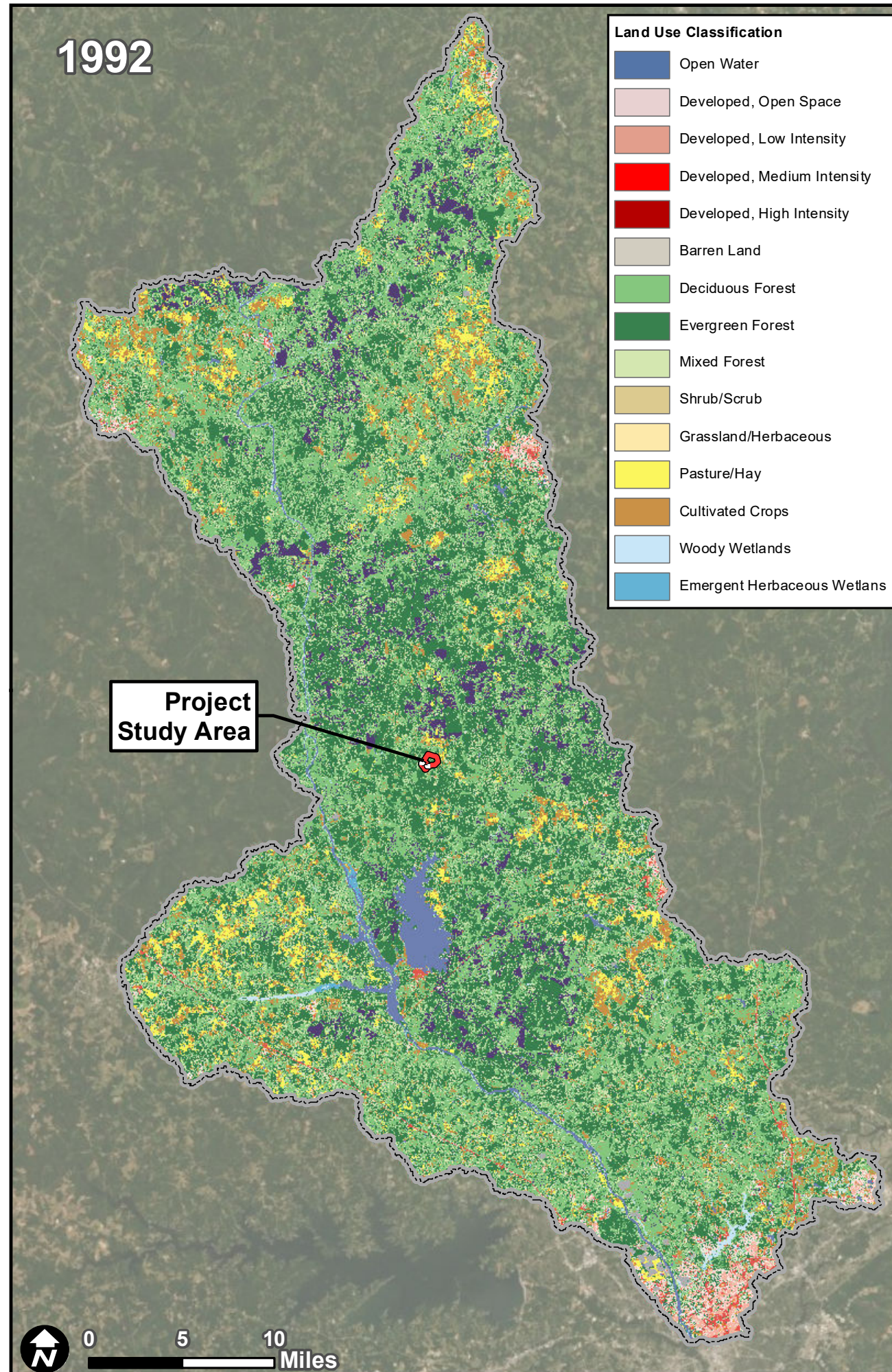
Job No. 6480200061

Drawn By: LNG

Reviewed By: BWS

Date: 8/13/2020

The map shown here has been created with all due and reasonable care and is strictly for use with Wood Environment & Infrastructure Solutions, Inc. (Wood) project number 6480200061. Wood assumes no liability, direct or indirect, whatsoever for any such third party or unintended use.



Sources: Esri, HERE, Garmin, USGS, Intermap, INCREMENT P, NRCan, Esri Japan, METI, Esri China (Hong Kong), Esri Korea, Esri (Thailand), NGCC, (c) OpenStreetMap contributors, and the GIS User Community
Source: Esri, DigitalGlobe, GeoEye, Earthstar Geographics, CNES/Airbus DS, USDA, USGS, AeroGRID, IGN, and the GIS User Community

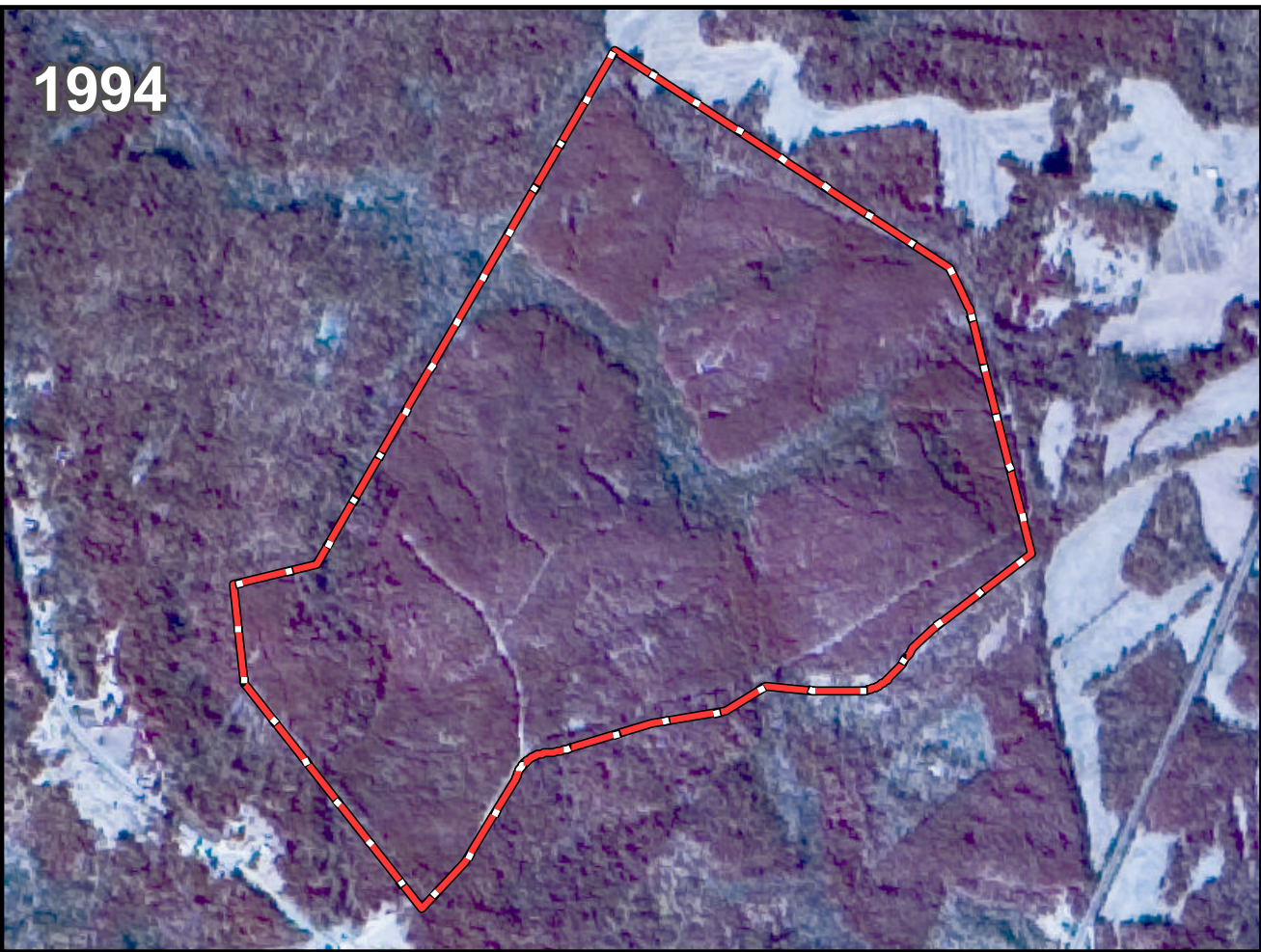
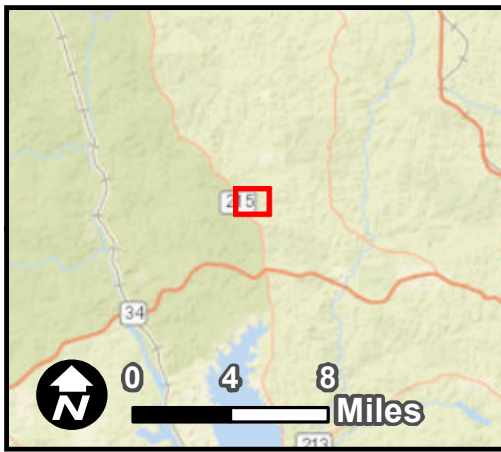
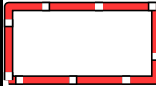
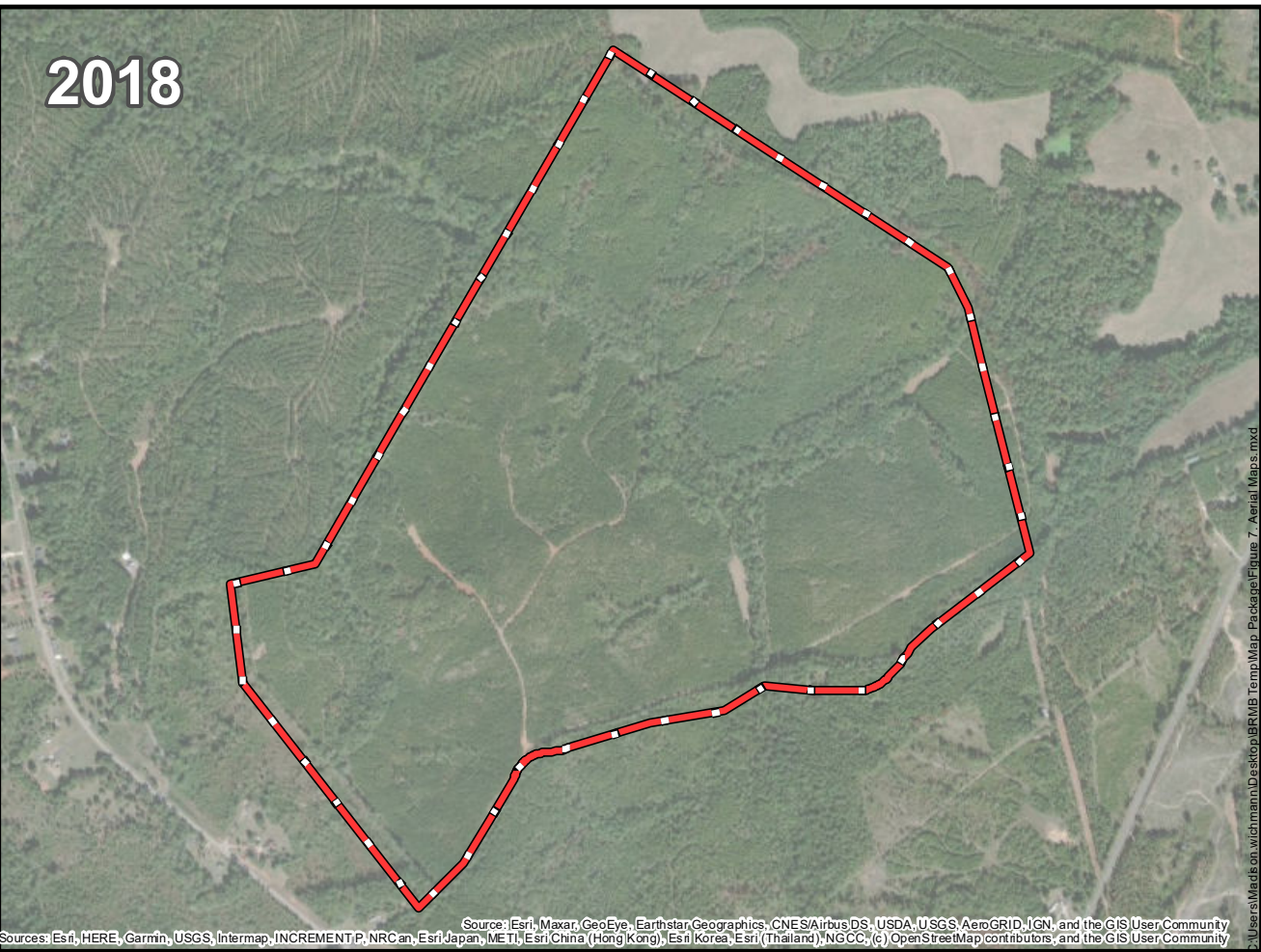
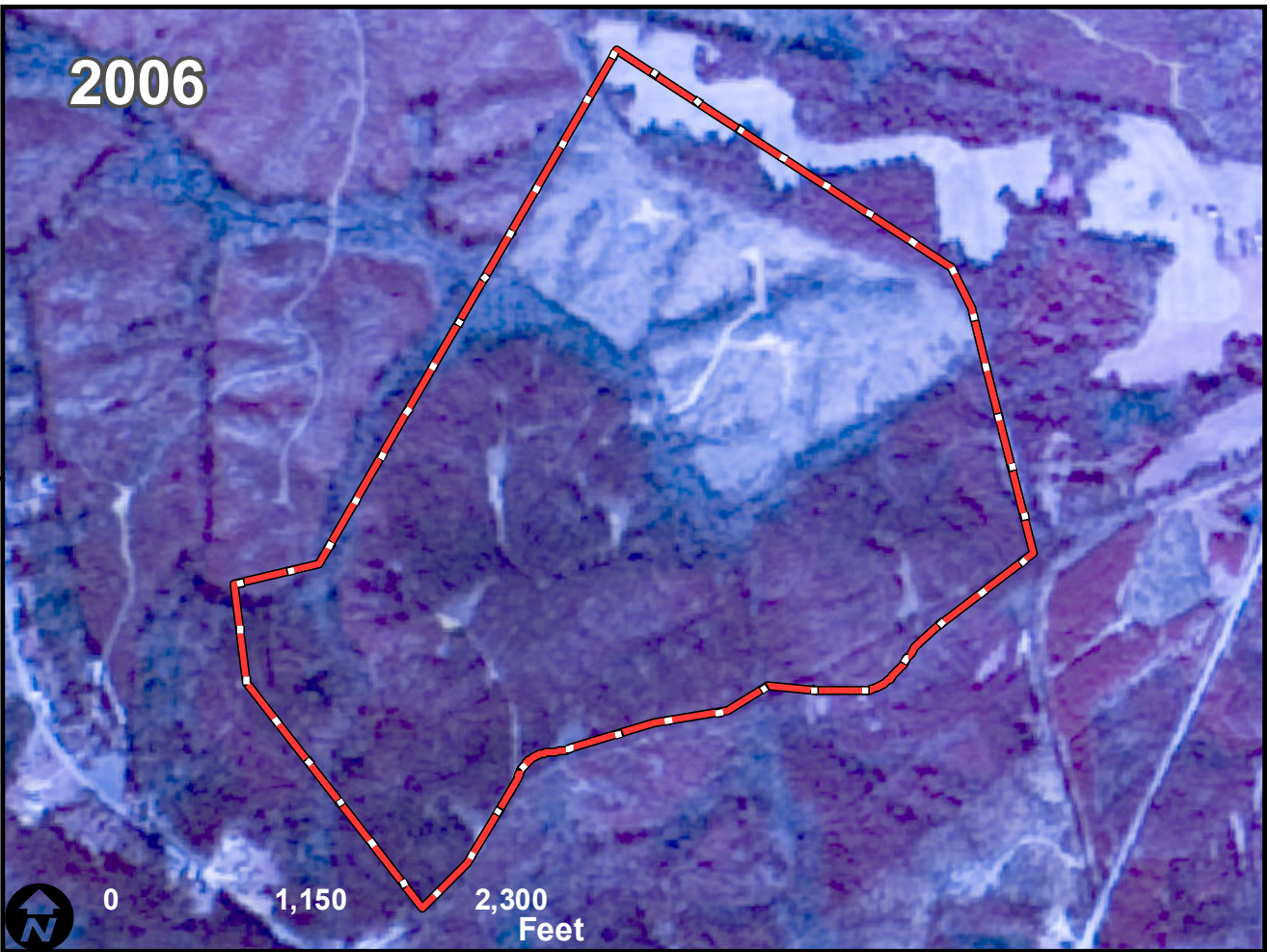


Figure 7. Aerial Maps

Buckhead Road Mitigation Bank
Fairfield County, South Carolina

Legend

 Project Study Area



Job No. 6480200061
 Drawn By: LNG
 Reviewed By: BWS
 Date: 8/14/2020

The map shown here has been created with all due and reasonable care and is strictly for use with Wood Environment & Infrastructure Solutions, Inc. (Wood) project number 6480200061. Wood assumes no liability, direct or indirect, whatsoever for any such third party or unintended use.

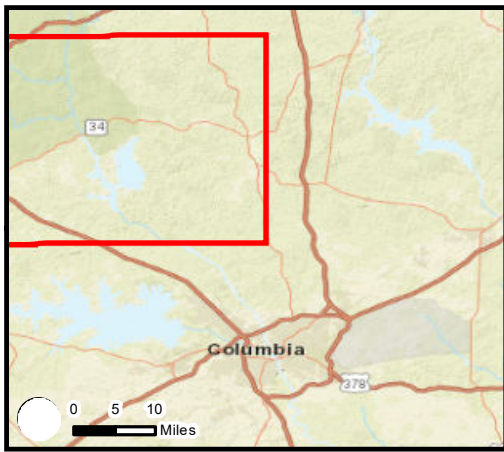
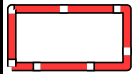




Figure 8. Water Quality Stations Map
 Buckhead Road Mitigation Bank
 Fairfield County, South Carolina

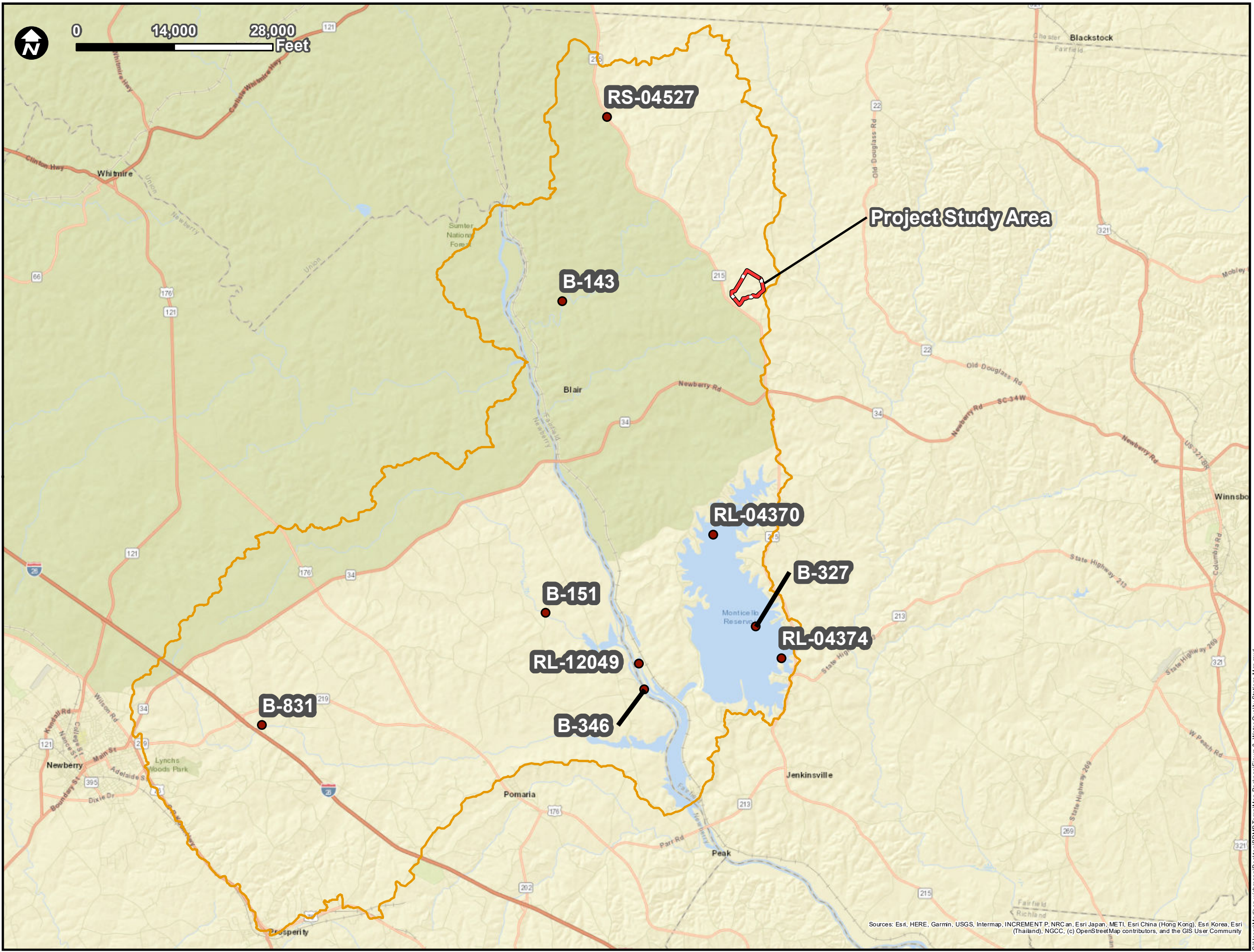
Legend

-  Project Study Area
-  Cannons Creek - Broad River Watershed (10-digit HUC)
-  Impaired DHEC 303(d) Station



Job No. 6480200061
 Drawn By: LNG
 Reviewed By: BWS
 Date: 8/14/2020

The map shown here has been created with all due and reasonable care and is strictly for use with Wood Environment & Infrastructure Solutions, Inc. (Wood) project number 6480200061. Wood assumes no liability, direct or indirect, whatsoever for any such third party or unintended use.



Sources: Esri, HERE, Garmin, USGS, Intermap, INCREMENT P, NRCan, Esri Japan, METI, Esri China (Hong Kong), Esri Korea, Esri (Thailand), NGCC, (c) OpenStreetMap contributors, and the GIS User Community

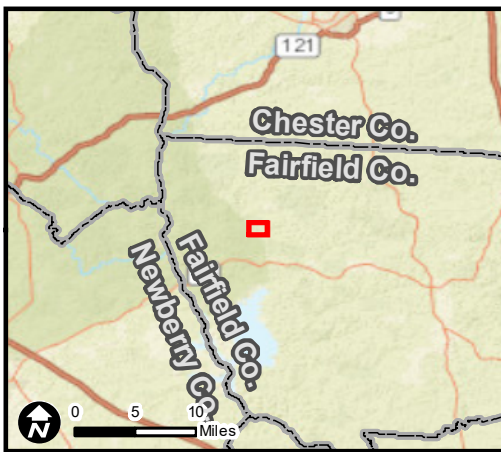


Figure 9. NRCS Soils Map-

Buckhead Road Mitigation Bank
Fairfield County, South Carolina

Legend

- Easement Boundary
- Project Study Area

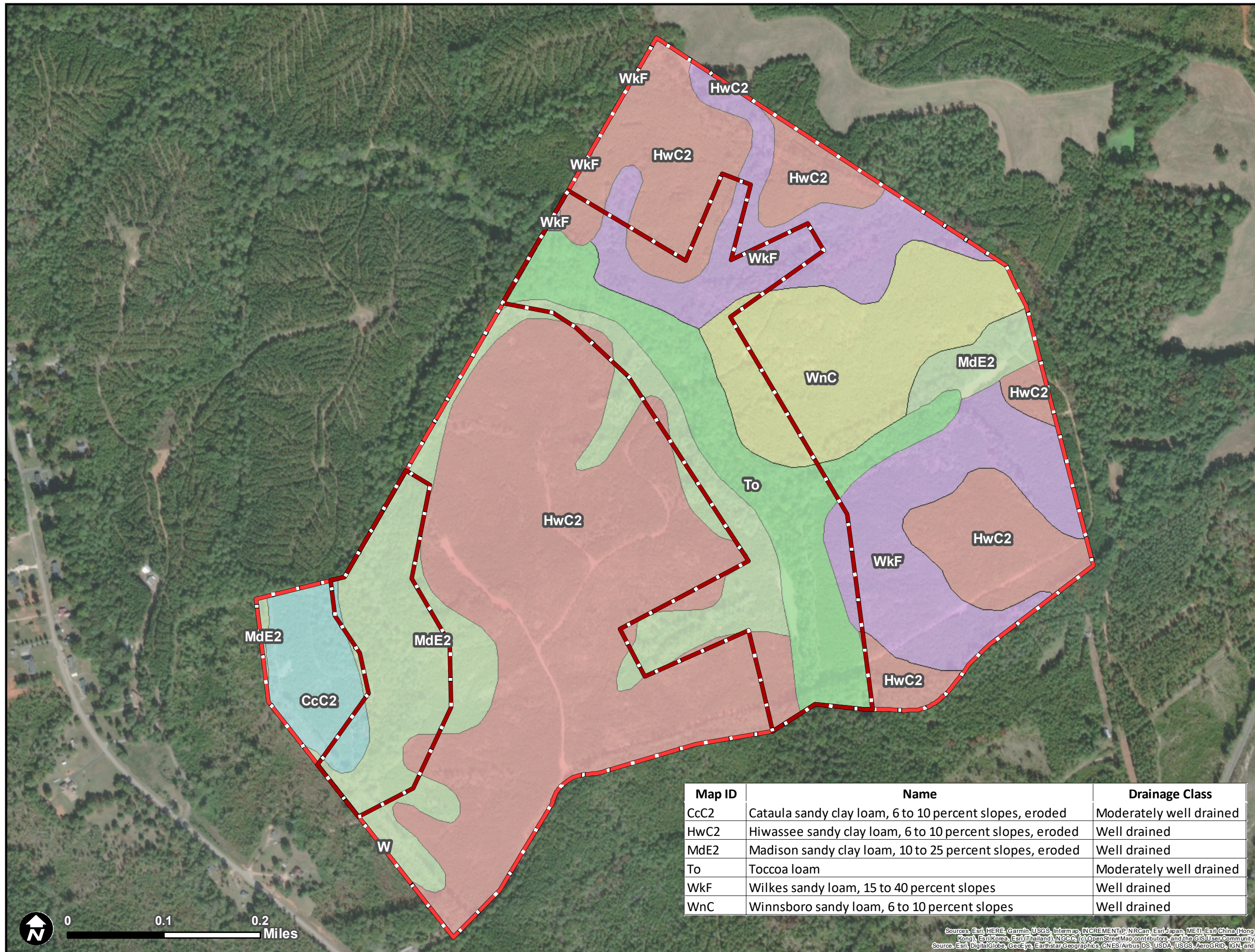
NRCS Soil Types

- Cataula sandy clay loam, 6-10% slopes, eroded
- Hiwassee sandy clay loam, 6-10% slopes, eroded
- Madison sandy clay loam, 10-25% slopes, eroded
- Toccoa loam
- Water
- Wilkes sandy loam, 15-40% slopes
- Winnsboro sandy loam, 6-10% slopes



Job No. 6480200061
 Drawn By: MEW
 Reviewed By: XXX
 Date: 9/14/2020

The map shown here has been created with all due and reasonable care and is strictly for use with Wood Environment & Infrastructure Solutions, Inc. (Wood) project number 6480200061. Wood assumes no liability, direct or indirect, whatsoever for any such third party or unintended use.



Map ID	Name	Drainage Class
CcC2	Cataula sandy clay loam, 6 to 10 percent slopes, eroded	Moderately well drained
HwC2	Hiwassee sandy clay loam, 6 to 10 percent slopes, eroded	Well drained
MdE2	Madison sandy clay loam, 10 to 25 percent slopes, eroded	Well drained
To	Toccoa loam	Moderately well drained
WkF	Wilkes sandy loam, 15 to 40 percent slopes	Well drained
WnC	Winnsboro sandy loam, 6 to 10 percent slopes	Well drained

Sources: Esri, HERE, Garmin, USGS, Intermap, INCREMENT P, NRCan, Esri Japan, METI, Esri China (Hong Kong), Esri Korea, Esri (Thailand), NGCC, (c) OpenStreetMap contributors, and the GIS User Community
 Source: Esri, DigitalGlobe, GeoEye, Earthstar Geographics, CNES/Airbus DS, USDA, USGS, AeroGRID, IGN, and

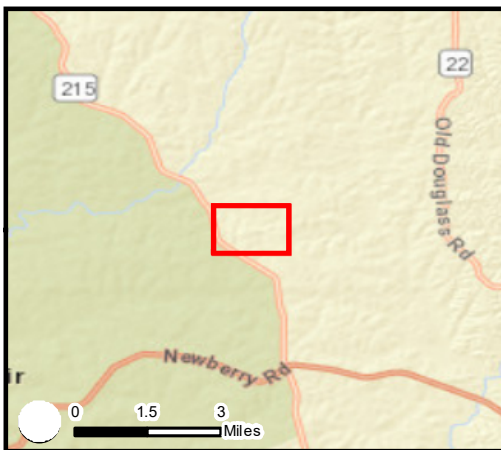


Figure 10. Existing Plant Communities Map

Buckhead Road Mitigation Bank
Fairfield County, South Carolina

Legend

Project Study

Existing Plant Community Types

- Loblolly Pine Plantation
- Oak-Hickory Forest
- Small Stream Forest



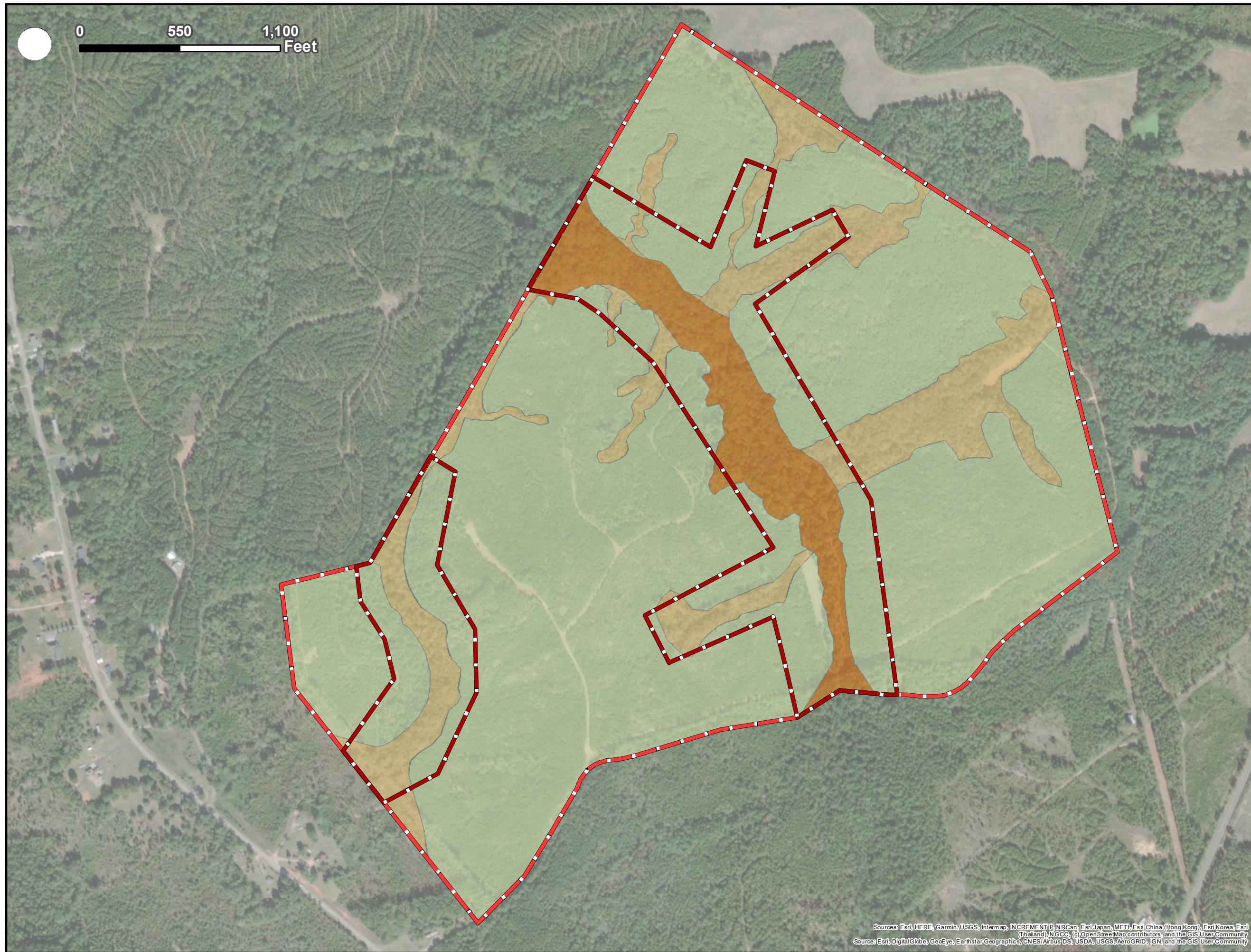
Job No. 6480200061

Drawn By: LNG

Reviewed By: BWS

Date: 9/14/2020

The map shown here has been created with all due and reasonable care and is strictly for use with Wood Environment & Infrastructure Solutions, Inc. (Wood) project number 6480200061. Wood assumes no liability, direct or indirect, whatsoever for any such third party or unintended use.



Sources: Esri, HERE, Garmin, USGS, Intermap, INCREMENT P, NRCan, Esri Japan, METI, Esri China (Hong Kong), Esri Korea, Esri (Thailand), NGCC, (c) OpenStreetMap contributors, and the GIS User Community
Sources: Esri, DigitalGlobe, GeoEye, Earthstar, Geographic, CNES/Airbus DS, USDA, USGS, AeroGRID, IGN, and the GIS User Community

\\CBA-PS1\projects\Environmental\2020 - Projects\Org 6480\0061 - Buckhead Road Mitigation Bank\GIS\Figure 10. Existing Plant Communities Map.mxd

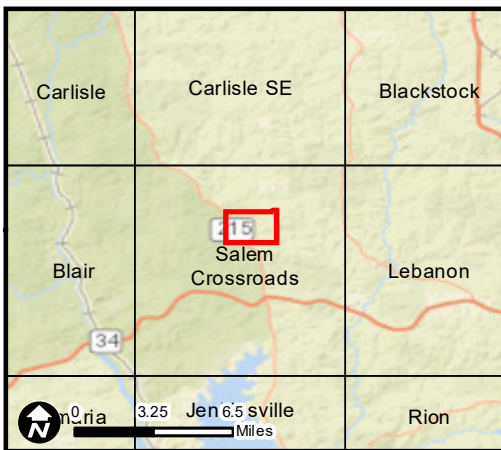




Figure 12. USGS Topographic Map-

Buckhead Road Mitigation Bank
Fairfield County, South Carolina

Legend

-  Project Study Area
-  Easement Boundary



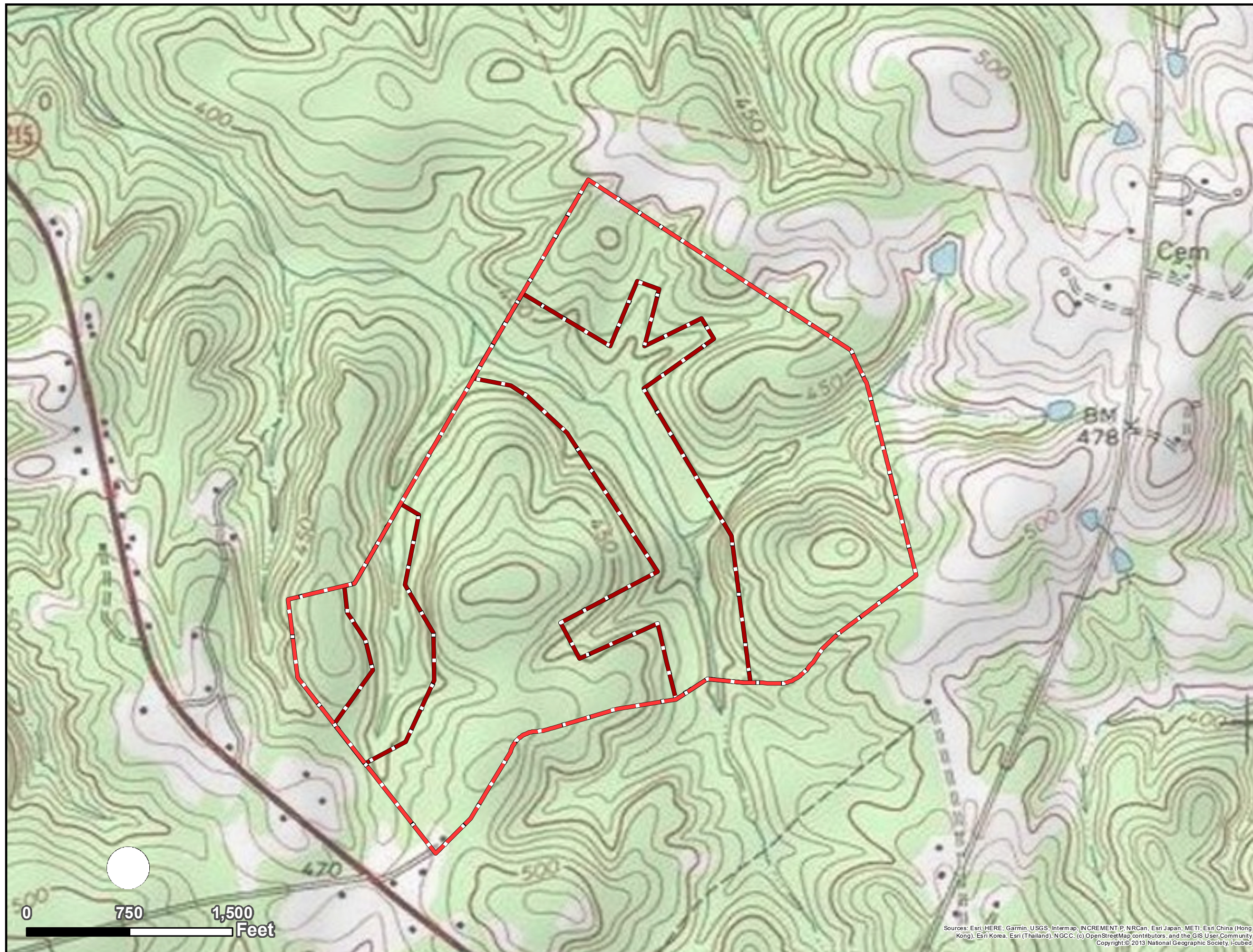
Job No. 648020061

Drawn By: MEW

Reviewed By: BWS

Date: 9/14/2020

The map shown here has been created with all due and reasonable care and is strictly for use with Wood Environment & Infrastructure Solutions, Inc. (Wood) project number 648020061. Wood assumes no liability, direct or indirect, whatsoever for any such third party or unintended use.



Sources: Esri, HERE, Garmin, USGS, Intermap, INCREMENT P, NRCan, Esri Japan, METI, Esri China (Hong Kong), Esri Korea, Esri (Thailand), NGCC, (c) OpenStreetMap contributors, and the GIS User Community
Copyright © 2013 National Geographic Society, i-cubed

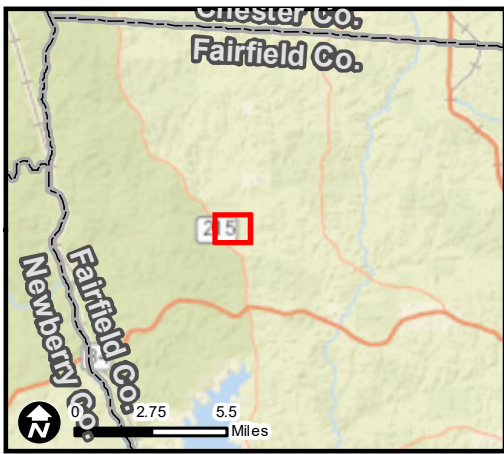






Figure 14. National Wetland Inventory Map

Buckhead Road Mitigation Bank
Fairfield County, South Carolina

Legend

-  Easement Boundary
-  Project Study Area

National Wetland Inventory

-  Freshwater Pond
-  Riverine

wood.

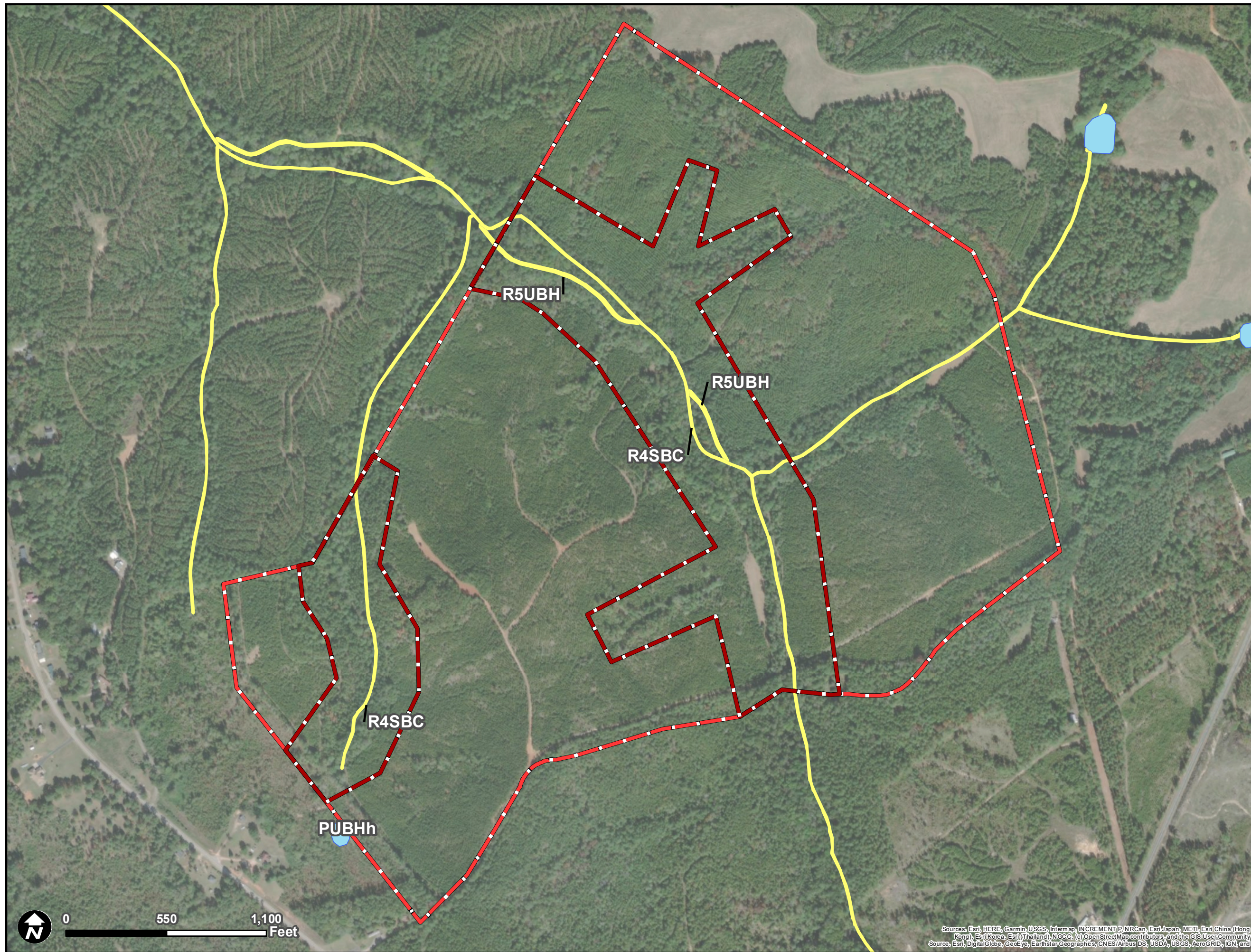
Job No. 6480200061

Drawn By: MEW

Reviewed By: BWS

Date: 9/14/2020

The map shown here has been created with all due and reasonable care and is strictly for use with Wood Environment & Infrastructure Solutions, Inc. (Wood) project number 6480200061. Wood assumes no liability, direct or indirect, whatsoever for any such third party or unintended use.



Sources: Esri, HERE, Garmin, USGS, Intermap, INCREMENT P, NRCan, Esri Japan, METI, Esri China (Hong Kong), Esri Korea, Esri (Thailand), NGCC, (c) OpenStreetMap contributors, and the GIS User Community
Source: Esri, DigitalGlobe, GeoEye, Earthstar Geographics, CNES/Airbus DS, USDA, USGS, AeroGRID, IGN, and the GIS User Community

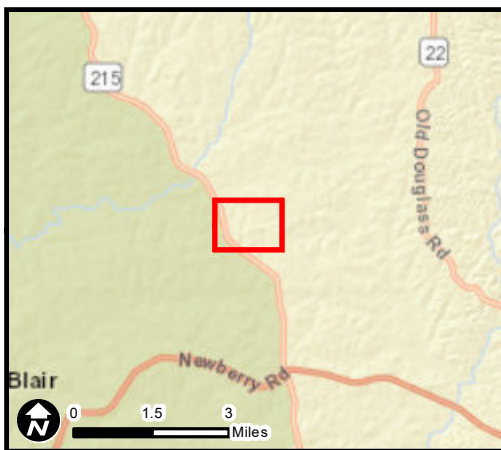


Figure 15. Mitigation Work Plan Map

Buckhead Road Mitigation Bank
Fairfield County, South Carolina

Legend

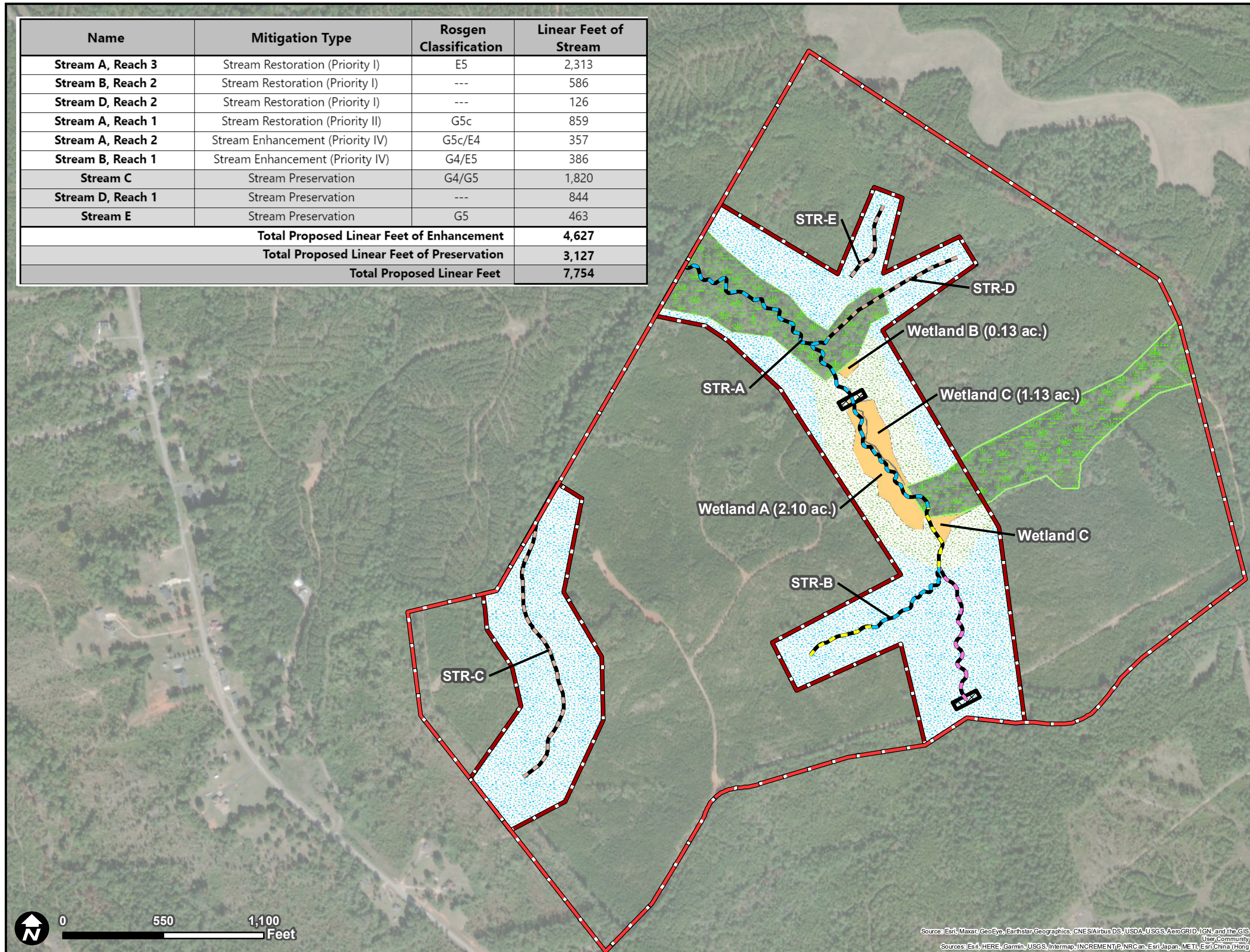
- Project Study Area (269.9 ac.)
- Proposed Easement Boundary (73.61 ac.)
- Low Water Crossing
- Stream Buffer
- Wetland Buffer
- Proposed Mitigation**
- Preservation
- Rosgen Priority I
- Rosgen Priority II
- Rosgen Priority IV
- Previously Protected Wetland Areas (19.47 ac.)
- Wetland Preservation (3.36 ac.)



Job No. 6480200061
 Drawn By: MEW
 Reviewed By: BWS
 Date: 8/14/2020

The map shown here has been created with all due and reasonable care and is strictly for use with Wood Environment & Infrastructure Solutions, Inc. (Wood) project number 6480200061. Wood assumes no liability, direct or indirect, whatsoever for any such third party or unintended use.

Name	Mitigation Type	Rosgen Classification	Linear Feet of Stream
Stream A, Reach 3	Stream Restoration (Priority I)	E5	2,313
Stream B, Reach 2	Stream Restoration (Priority I)	---	586
Stream D, Reach 2	Stream Restoration (Priority I)	---	126
Stream A, Reach 1	Stream Restoration (Priority II)	G5c	859
Stream A, Reach 2	Stream Enhancement (Priority IV)	G5c/E4	357
Stream B, Reach 1	Stream Enhancement (Priority IV)	G4/E5	386
Stream C	Stream Preservation	G4/G5	1,820
Stream D, Reach 1	Stream Preservation	---	844
Stream E	Stream Preservation	G5	463
Total Proposed Linear Feet of Enhancement			4,627
Total Proposed Linear Feet of Preservation			3,127
Total Proposed Linear Feet			7,754



Source: Esri, Maxar, GeoEye, Earthstar, Geographics, CNES/Airbus DS, USDA, USGS, AeroGRID, IGN, and the GIS User Community
 Sources: Esri, HERE, Garmin, USGS, Intermap, INCREMENT P, NRCan, Esri Japan, METI, Esri China (Hong

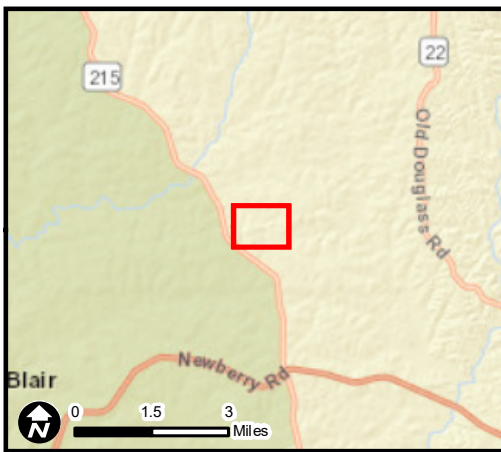


Figure 16. Proposed Planting Plan Map

Buckhead Road Mitigation Bank
Fairfield County, South Carolina

Legend

- Project Study Area
- Proposed Easement Boundary

Planting Plan

- Zone 1 (1.07 ac.)
- Zone 2 (0.71 ac.)



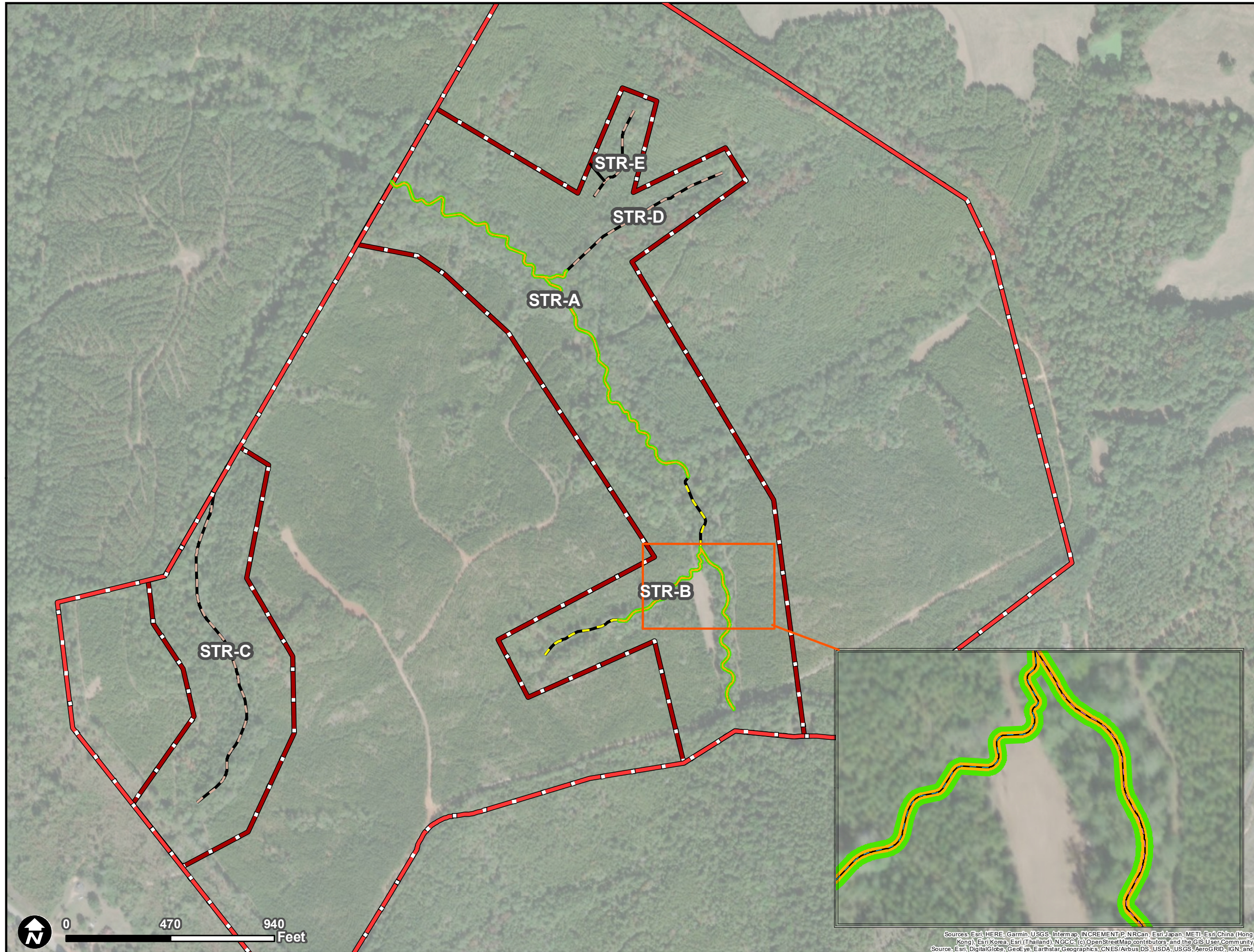
Job No. 6480200061

Drawn By: MEW

Reviewed By: BWS

Date: 9/14/2020

The map shown here has been created with all due and reasonable care and is strictly for use with Wood Environment & Infrastructure Solutions, Inc. (Wood) project number 6480200061. Wood assumes no liability, direct or indirect, whatsoever for any such third party or unintended use.



Sources: Esri, HERE, Garmin, USGS, Intermap, INCREMENT P, NRCan, Esri Japan, METI, Esri China (Hong Kong), Esri Korea, Esri (Thailand), NGCC, (c) OpenStreetMap contributors, and the GIS User Community
Source: Esri, DigitalGlobe, GeoEye, Earthstar Geographics, CNES/Airbus/DS, USDA, USGS, AeroGRID, IGN, and