

PUBLIC NOTICE

**CHARLESTON DISTRICT, CORPS OF ENGINEERS
69A Hagood Avenue
Charleston, South Carolina 29403-5107**

REGULATORY DIVISION
Refer to: P/N SAC-2021-00836

June 28, 2022

Pursuant to Section 10 of the Rivers and Harbors Act of 1899 (33 U.S.C. 403) and Sections 401 and 404 of the Clean Water Act (33 U.S.C. 1341), a Prospectus has been submitted to the Department of the Army and the South Carolina Interagency Review Team by

**National Audubon Society
c/o Audubon South Carolina
125 Wappoo Creek Drive
Building G, Suite 214
Charleston, South Carolina 29412**

for a proposal to establish and operate a stream and wetland mitigation bank that is located within the

Edisto River Watershed

at a location south of and adjacent to Wire Road, west of the intersection of Wire Road and Pine Bluff Road, in Dorchester County, South Carolina (Latitude: 33.061895°, Longitude: -80.442707°), Maple Cane Swamp Quadrangle sheet.

In order to give all interested parties an opportunity to express their views

NOTICE

is hereby given that written statements regarding the proposed work will be received by the **Corps** until

30 Days from the Date of this Notice,

from those interested in the activity and whose interests may be affected by the proposed work.

The proposal consists of establishing a freshwater stream and wetland mitigation bank in the Edisto River watershed (8-digit HUC 03050206) in the Mid-Atlantic Coastal Plain Region. The proposed 232.46-acre mitigation site includes approximately 5,393 linear feet of frontage along the Edisto River and 207.24 acres of wetlands. According to the Prospectus, the mitigation work plan includes vegetative enhancement of 86.91 acres of wetlands and vegetative and hydrologic enhancement of 22.03 acres of wetlands. Enhancement will be through means of removal and replacement of pine trees with native hardwoods, the plugging and/or filling of existing ditches, and breaking of pine beds. In addition, preservation of 98.3 acres of wetlands and 5,393 linear feet of frontage along the Edisto River is proposed. The sponsor is also proposing the enhancement and/or preservation of 25.06 acres of associated upland buffers. Once the mitigation work is completed, the bank sponsor proposes to monitor

the mitigation site to ensure that the restoration areas are developing as expected and meeting the necessary performance standards.

The proposed mitigation bank will provide in-kind compensatory mitigation for authorized impacts to aquatic resources located in the Edisto and Four Hole Swamp Watersheds within the Mid-Atlantic Coastal Plain ecoregion as shown on the attached Service Area Map. The work required to complete the proposed activities on the mitigation site may be authorized under Nationwide Permit #27 after reviews by the Corps, the South Carolina Department of Health and Environmental Control, and the Interagency Review Team. The mitigation bank site will be protected by the bank sponsor using a conservation easement.

NOTE: This public notice and associated plans are available on the Corps' website at:
<http://www.sac.usace.army.mil/Missions/Regulatory/PublicNotices>.

The District Engineer has concluded that the discharges associated with this project, both direct and indirect, should be reviewed by the South Carolina Department of Health and Environmental Control in accordance with provisions of Section 401 of the Clean Water Act. As such, this notice constitutes a request, on behalf of the applicant, for certification that this project will comply with applicable effluent limitations and water quality standards. The bank sponsor is hereby advised that supplemental information may be required by the State to facilitate the review.

This notice initiates the Essential Fish Habitat (EFH) consultation requirements of the Magnuson-Stevens Fishery Conservation and Management Act. Implementation of the proposed project would not impact estuarine substrates and emergent wetlands utilized by various life stages of species comprising the shrimp, and snapper-grouper management complexes. The District Engineer's initial determination is that the proposed action would not have a substantial individual or cumulative adverse impact on EFH or fisheries managed by the South Atlantic Fishery Management Council and the National Marine Fisheries Service (NMFS). The District Engineer's final determination relative to project impacts and the need for mitigation measures is subject to review by and coordination with the NMFS.

Pursuant to the Section 7 of the Endangered Species Act of 1973 (as amended), the Corps has reviewed the project area, examined all information provided by the applicant, and the District Engineer has determined, based on the most recently available information, that West Indian Manatee (*Trichechus manatus*), Atlantic sturgeon (*Acipenser oxyrinchus oxyrinchus*), and Shortnose Sturgeon (*Acipenser brevirostrum*), Red-cockaded woodpecker (*Picoides borealis*), Northern long-eared bat (*Myotis septentrionalis*), and American wood stork (*Mycteria americana*) have the potential to occur within the vicinity of the project area. However, it has been determined that the project will have no effect on West Indian Manatee (*Trichechus manatus*), Shortnose Sturgeon (*Acipenser brevirostrum*) and Atlantic sturgeon (*Acipenser oxyrinchus oxyrinchus*) and will not result in the destruction or adverse modification of their designated or proposed critical habitat. Additionally, the District Engineer has determined that the project is not likely to adversely affect the Red-cockaded woodpecker (*Picoides borealis*), Northern long-eared bat (*Myotis septentrionalis*), and American wood stork (*Mycteria americana*) or result in the destruction or adverse modification of designated or proposed critical habitat. This public notice serves as a request for written concurrence from the U.S. Fish and Wildlife Service and/or the National Marine Fisheries Service on this determination.

In accordance with Section 106 of the NHPA, the District Engineer has consulted South Carolina ArchSite (GIS), for the presence or absence of historic properties (as defined in 36 C.F.R.

800.16)(f)(1)), and has initially determined that there are historic properties present, but they will not be affected; therefore, there will be no effect on historic properties. To ensure that other historic properties that the District Engineer is not aware of are not overlooked, this public notice also serves as a request to the State Historic Preservation Office and other interested parties to provide any information they may have with regard to historic properties. This public notice serves as a request for concurrence within 30 days from the SHPO (and/or Tribal Historic Preservation Officer).

Any person may request, in writing, within the comment period specified in this notice, that a public hearing be held to consider this application. Requests for a public hearing shall state, with particularity, the reasons for holding a public hearing.

The decision whether to approve or deny the proposed mitigation bank will be based on an evaluation of the probable impact including cumulative impacts of the activity on the public interest. The benefit which reasonably may be expected to accrue from the project must be balanced against its reasonably foreseeable detriments. All factors which may be relevant to the project will be considered including the cumulative effects thereof; among those are conservation, economics, aesthetics, general environmental concerns, wetlands, historic properties, fish and wildlife values, flood hazards, flood plain values, land use, navigation, shoreline erosion and accretion, recreation, water supply and conservation, water quality, energy needs, safety, food and fiber production and, in general, the needs and welfare of the people.

The Corps is soliciting comments from the public; Federal, state, local agencies, and officials; Indian Tribes; and other interested parties in order to consider and evaluate the impacts of this activity. Any comments received will be considered by the Corps to determine whether to approve or deny the proposed mitigation bank. To make this decision, comments are used to assess impacts on endangered species, historic properties, water quality, general environmental effects, and the other public interest factors listed above. Comments are used in the preparation of an Environmental Assessment and/or an Environmental Impact Statement pursuant to the National Environmental Policy Act. Comments are also used to determine the need for a public hearing and to determine the overall public interest of the activity. **Please submit comments in writing, identifying the project of interest by public notice number, to the following address:**

US ARMY CORPS OF ENGINEERS
Conway Regulatory Field Office
Conway Agricultural Center
1949 Industrial Park Road, Rm. 140
Conway, SC 29526

The Prospectus for the proposed mitigation bank is available for review upon request. If there are any questions concerning this public notice, please contact Erica Stone, at (843) 817-7188 or by email at Erica.L.Stone@usace.army.mil.



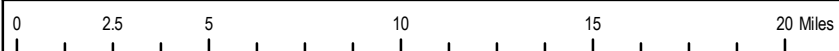
 Pine Bluff Tract ± 529.92 AC

Figure 1
Location Map

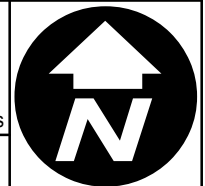
Pine Bluff Mitigation Bank
Edisto River Watershed
Dorchester County, SC

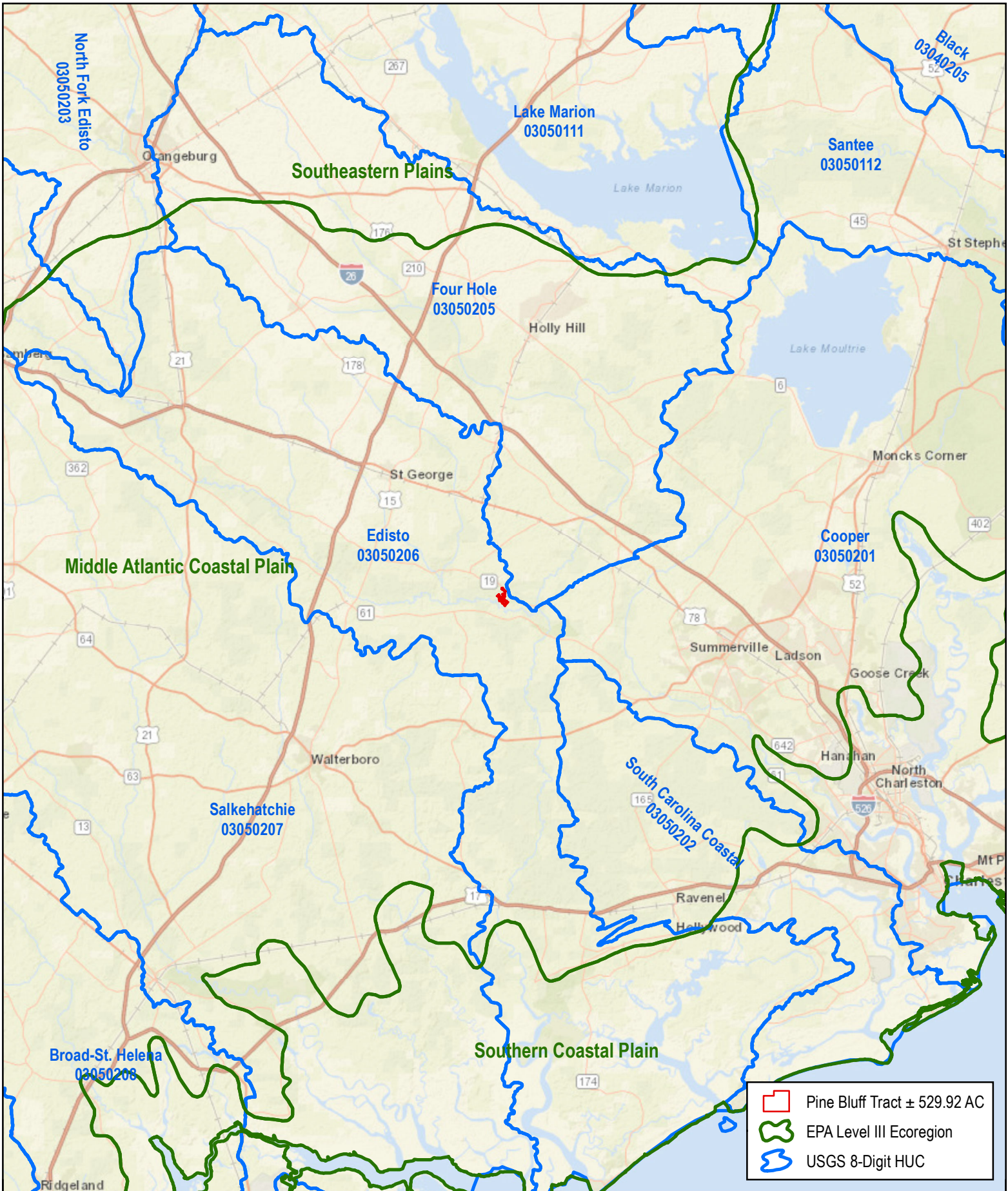
Source: ESRI
Date: March 2022

Notes:



1 in = 5 miles








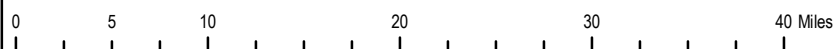
	Pine Bluff Tract ± 529.92 AC
	EPA Level III Ecoregion
	USGS 8-Digit HUC



Figure 2
Watershed & Ecoregion Map
 Pine Bluff Mitigation Bank
 Edisto River Watershed
 Dorchester County, SC
 Source: ESRI
 Date: March 2022

Notes:



1 in = 10 miles



Lower Edisto River Basin Natural Areas & Sensitive Species

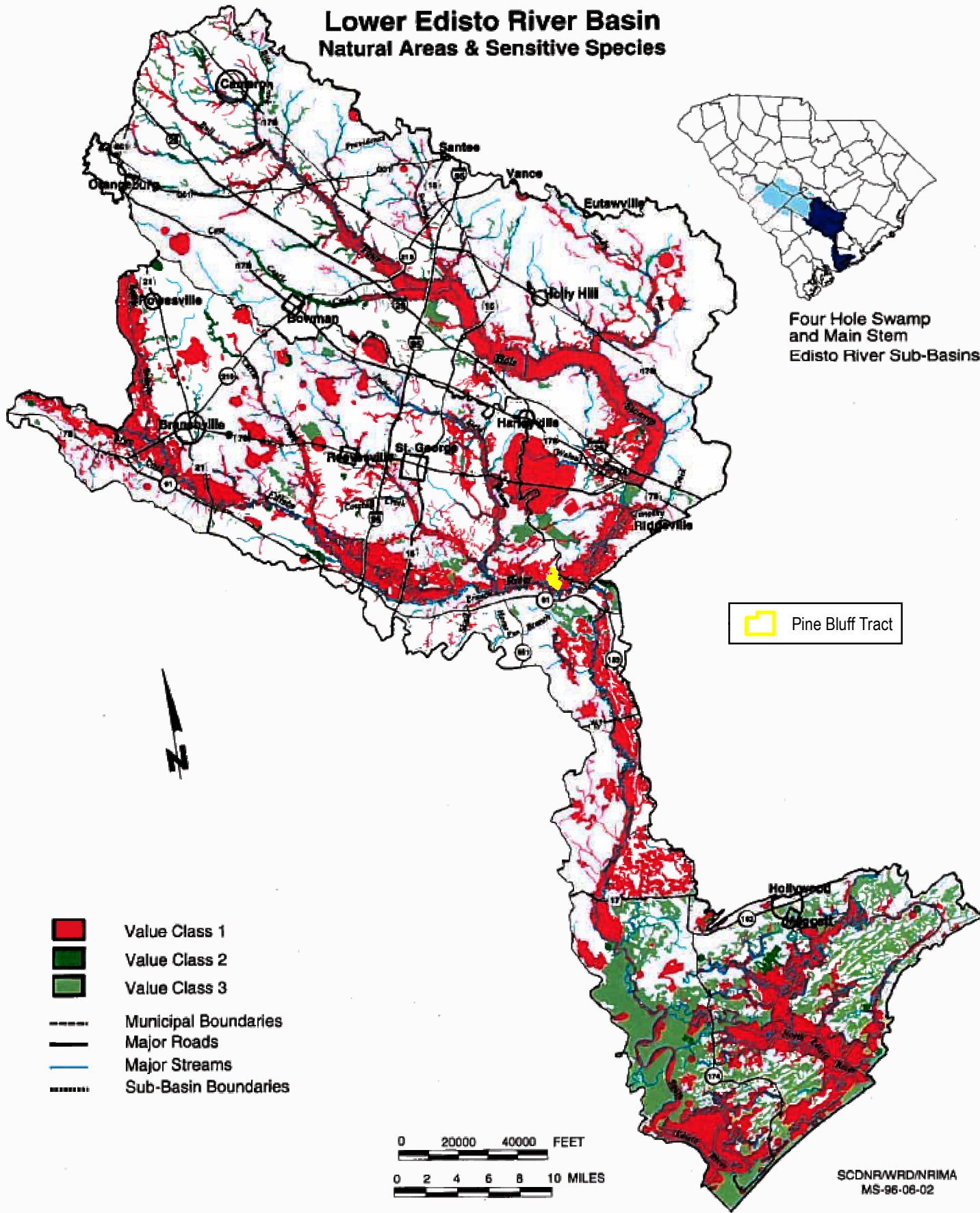
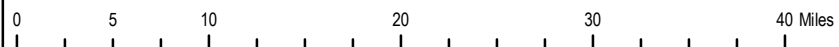
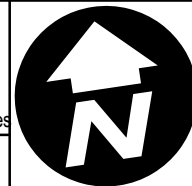









Figure 3
Ecological Resources Map
 Pine Bluff Mitigation Bank
 Edisto River Watershed
 Dorchester County, SC
 Source:SCDNR, SCDL, SCDPRT
 Date: March 2022

Notes:



1 in = 10 miles



	Pine Bluff Boundary ± 232.46 AC		Culvert Crossing		Photo Direction
	Wetland ± 207.24 AC		Wetland Data Point		
	Non-Wetland Water (Stream) ± 5,393 LF		Upland Data Point		



Wetland 2
108.94 AC

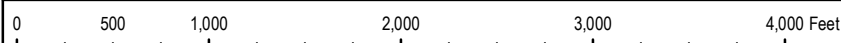
Wetland 1
98.30 AC

Edisto River



Figure 4
Wetland Delineation Map
Pine Bluff Mitigation Bank
Edisto River Watershed
Dorchester County, SC
Source: ESRI
Date: March 2022

Notes:





Pine Bluff Mitigation Bank Boundary ± 232.46 AC

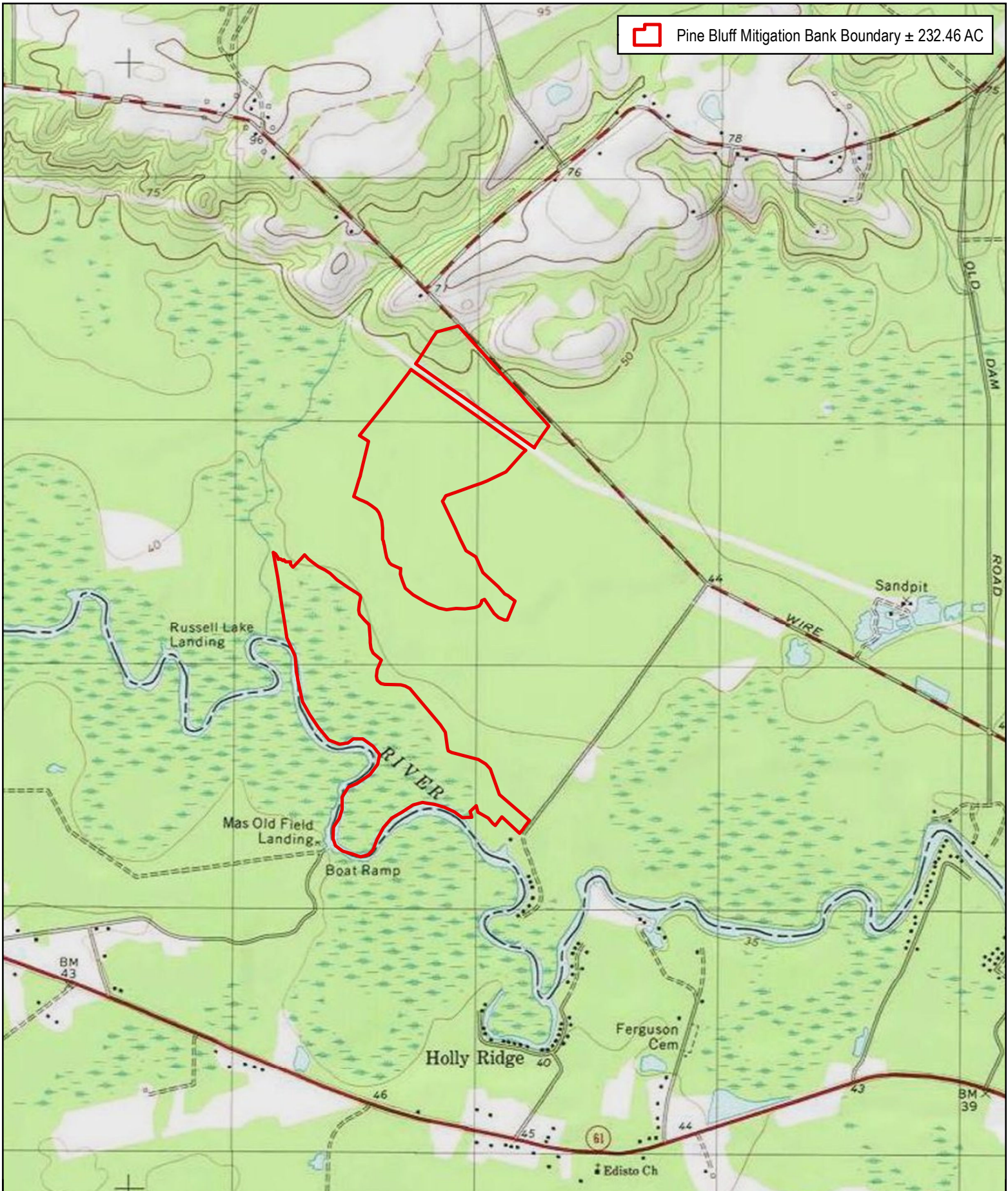
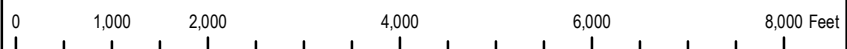


Figure 5 USGS Map

Pine Bluff Mitigation Bank
Edisto River Watershed
Dorchester County, SC
Source: USGS

"Maple Cane Swamp" 7.5-min Quad
Date: March 2022

Notes:



1 in = 2,000 feet



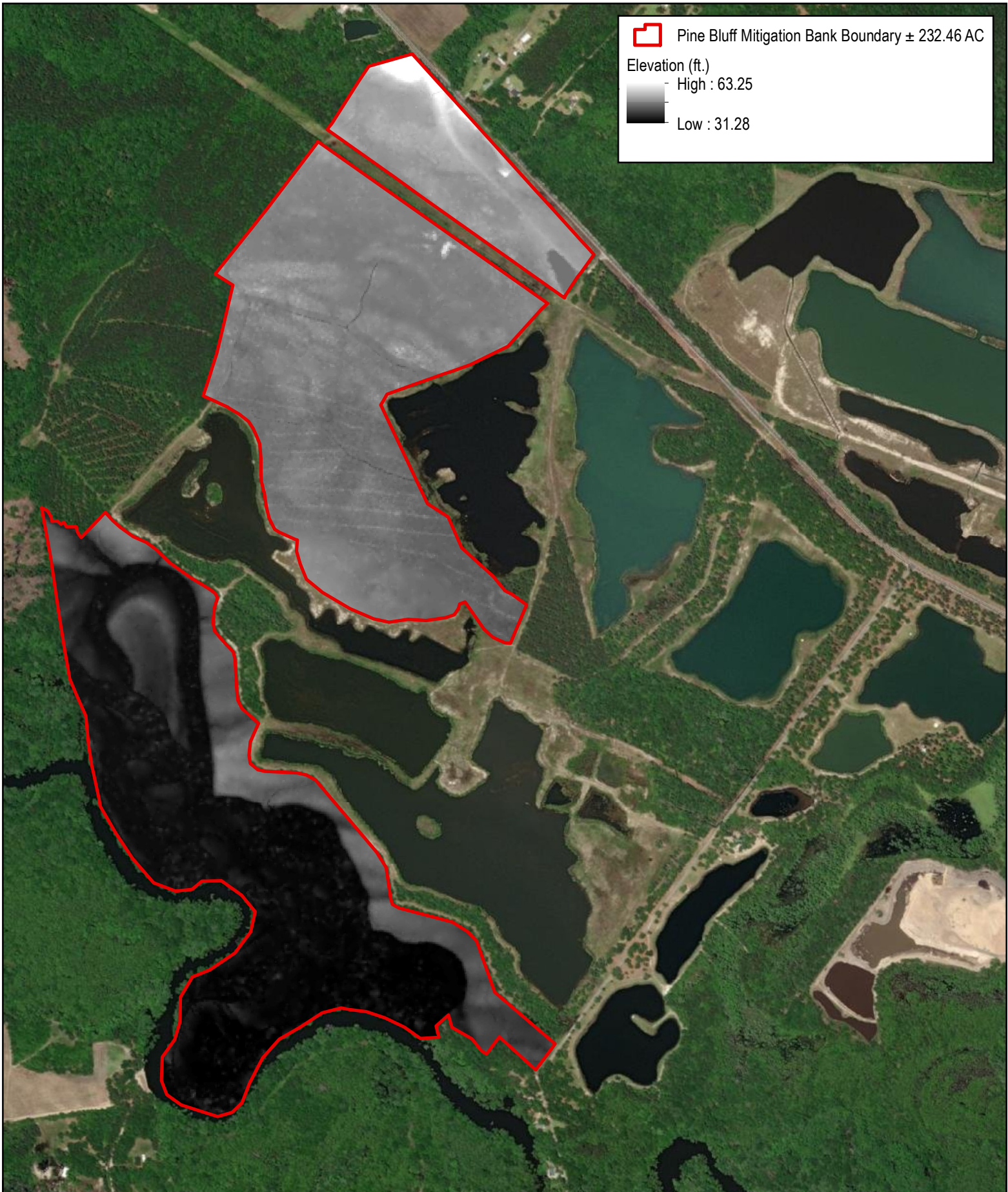


Figure 6
Digital Elevation Map
 Pine Bluff Mitigation Bank
 Edisto River Watershed
 Dorchester County, SC
 Source: ESRI, SCDNR (Dorchester 2009)
 Date: March 2022

Notes:

1 in = 1,000 feet

0 500 1,000 2,000 3,000 4,000 Feet





Pine Bluff Mitigation Bank Boundary ± 232.46 AC

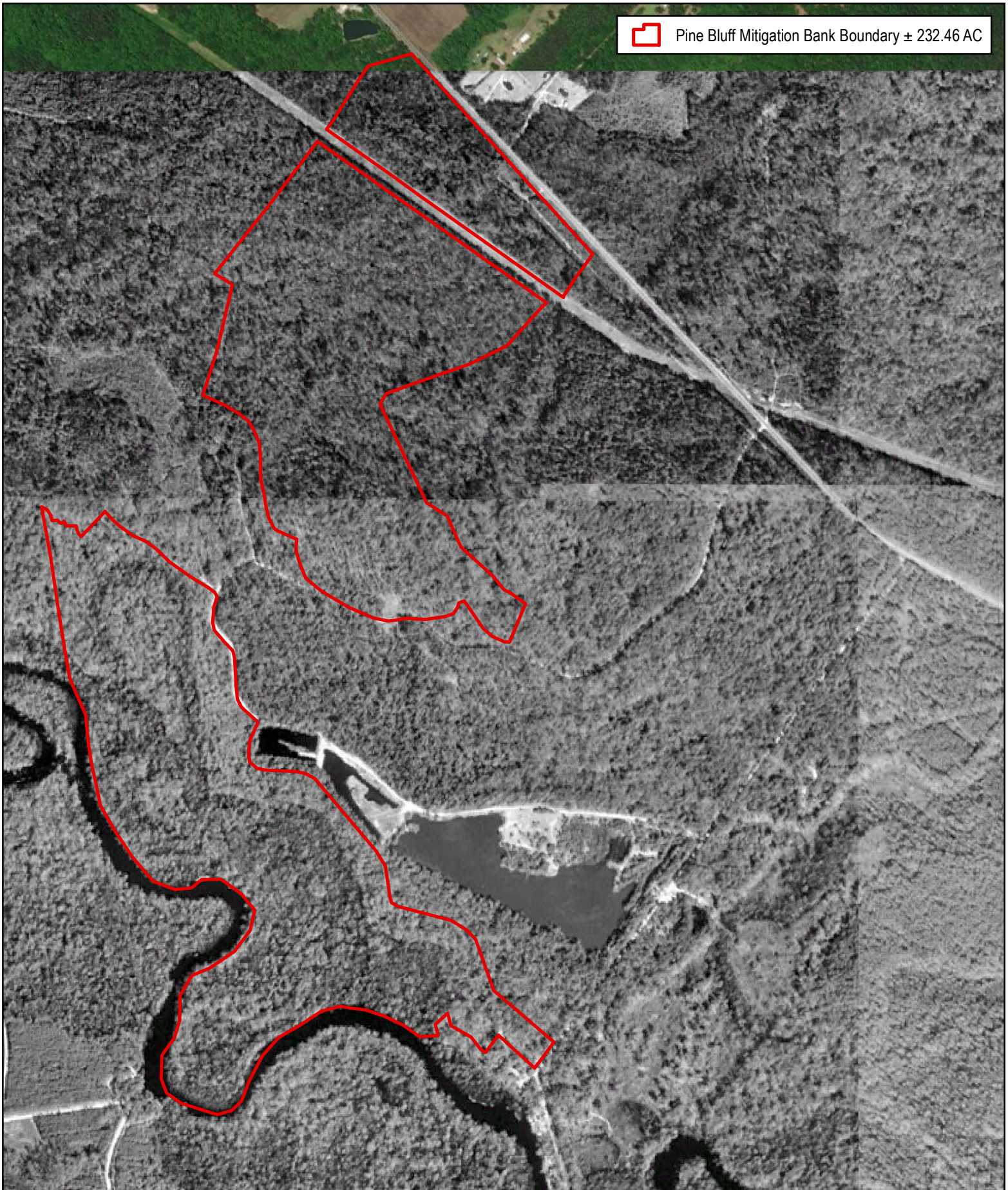


Figure 7A

1994 Aerial Photograph

Pine Bluff Mitigation Bank
Edisto River Watershed
Dorchester County, SC
Source: USGS, Google Earth
Date: March 2022

Notes:

1 in = 1,000 feet

0 500 1,000 2,000 3,000 4,000 Feet





Pine Bluff Mitigation Bank Boundary ± 232.46 AC

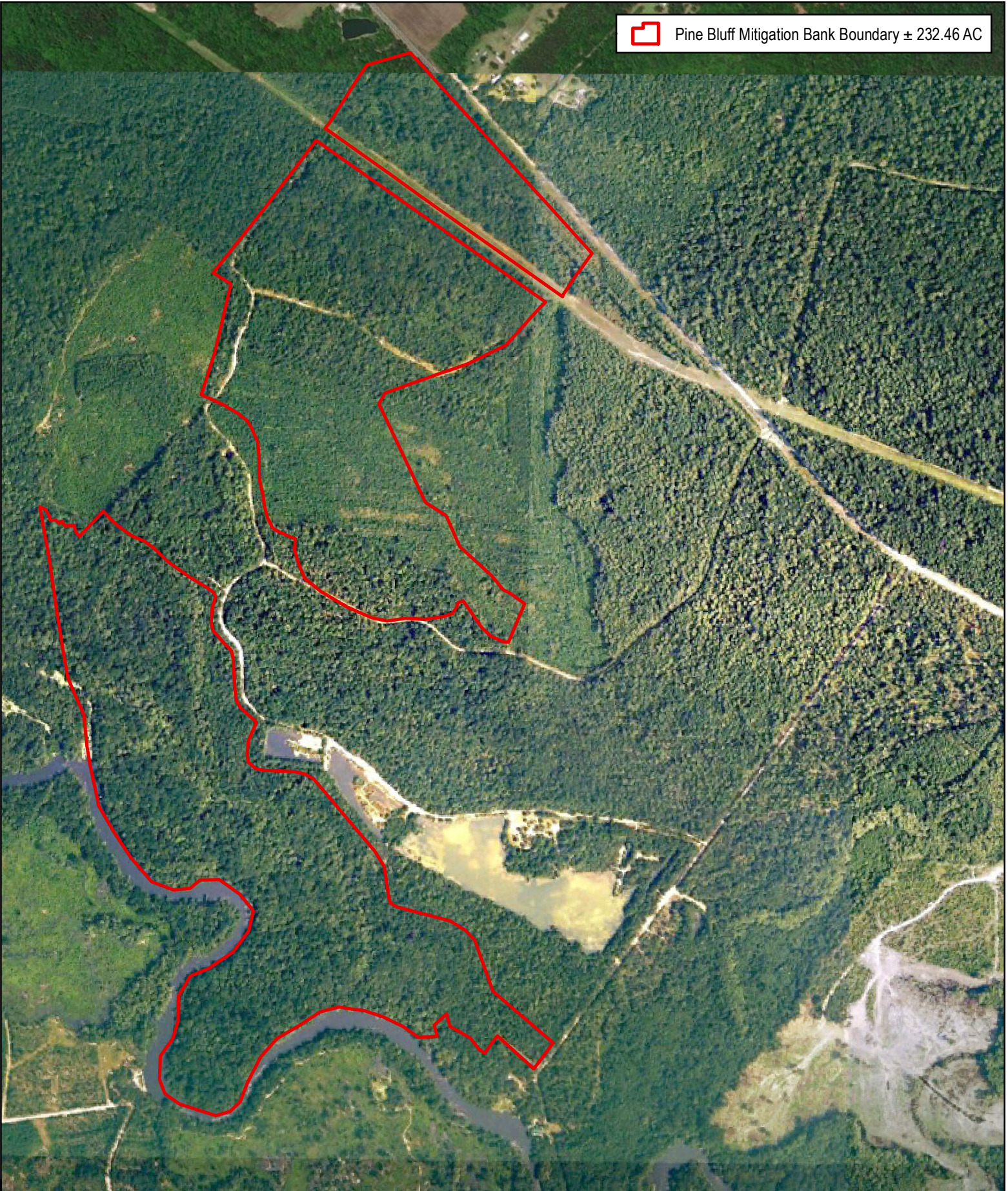


Figure 7B

2005 Aerial Photograph

Pine Bluff Mitigation Bank
Edisto River Watershed
Dorchester County, SC
Source: USGS, Google Earth
Date: March 2022

Notes:

1 in = 1,000 feet

0 500 1,000 2,000 3,000 4,000 Feet





Pine Bluff Mitigation Bank Boundary ± 232.46 AC

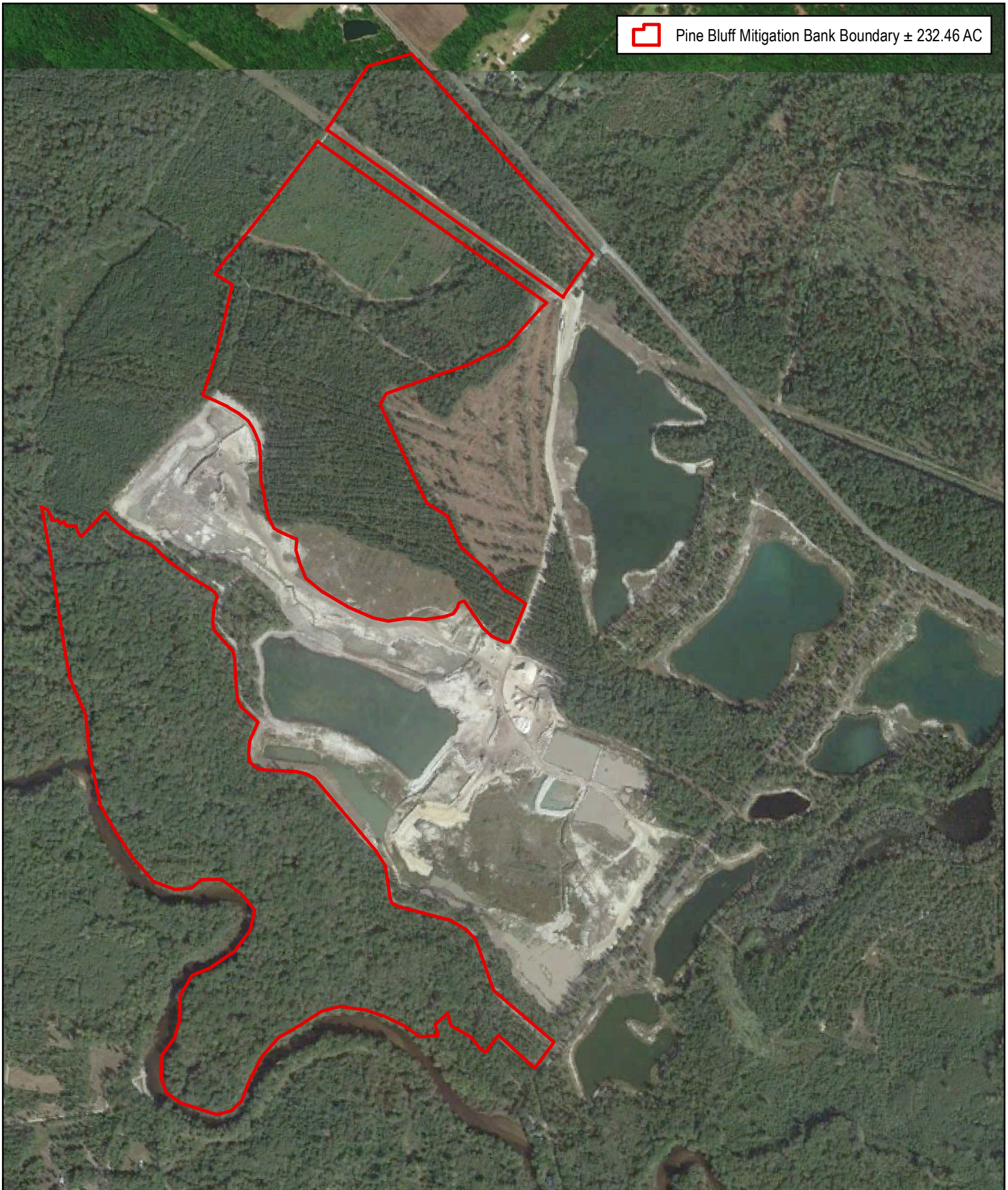


Figure 7C

2012 Aerial Photograph

Pine Bluff Mitigation Bank
Edisto River Watershed
Dorchester County, SC
Source: USGS, Google Earth
Date: March 2022

Notes:

1 in = 1,000 feet

0 500 1,000 2,000 3,000 4,000 Feet





Pine Bluff Mitigation Bank Boundary ± 232.46 AC



Figure 7D

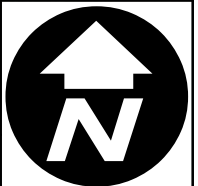
2019 Aerial Photograph

Pine Bluff Mitigation Bank
Edisto River Watershed
Dorchester County, SC
Source: USGS, Google Earth
Date: March 2022

Notes:

1 in = 1,000 feet

0 500 1,000 2,000 3,000 4,000 Feet



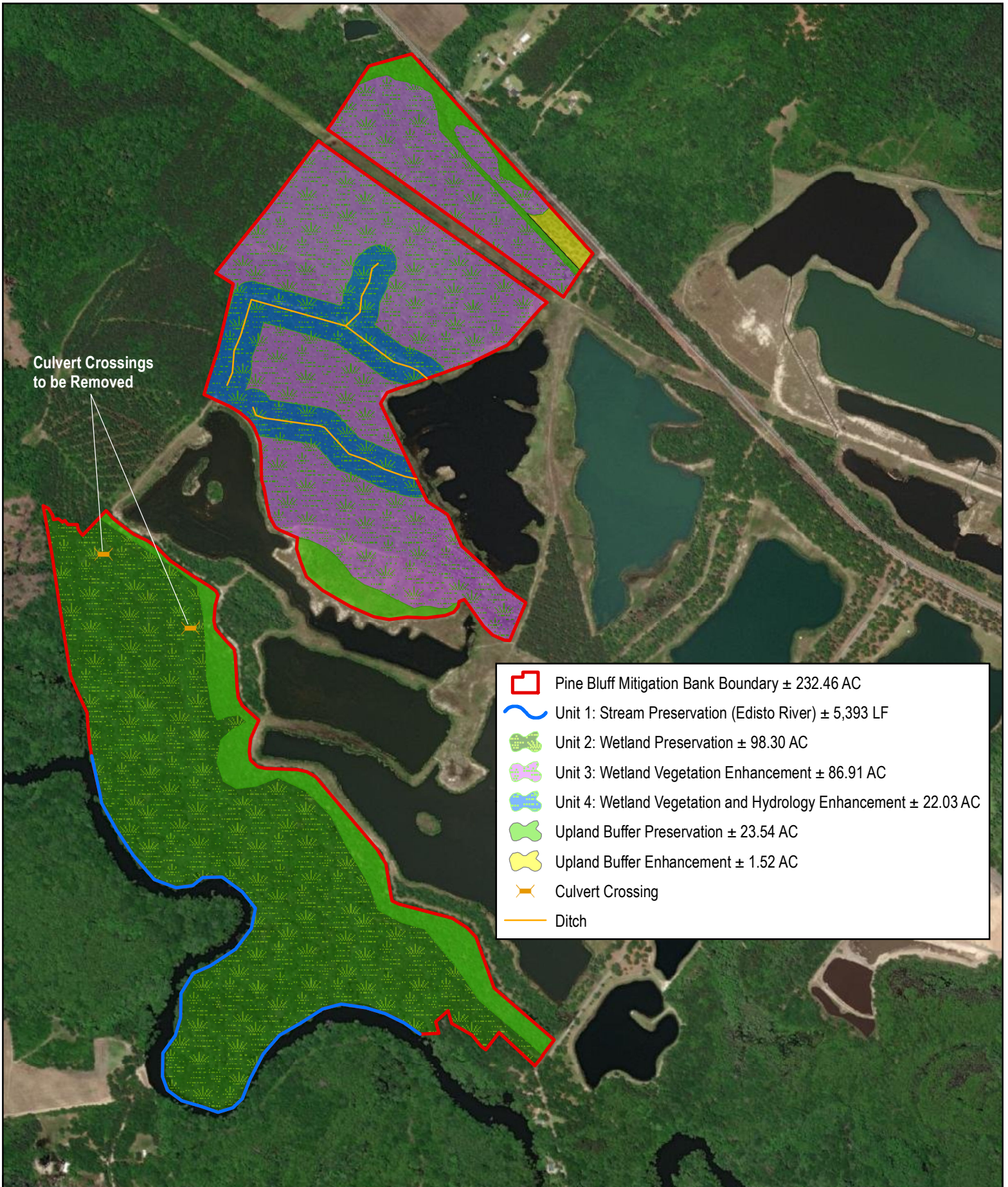
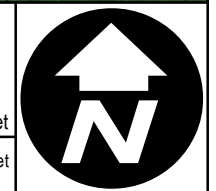


Figure 8
Proposed Mitigation Map
 Pine Bluff Mitigation Bank
 Edisto River Watershed
 Dorchester County, SC
 Source: ESRI
 Date: March 2022

Notes: ATV trails within Pine Bluff Mitigation Bank Boundary will be decommissioned.

1 in = 1,000 feet

0 500 1,000 2,000 3,000 4,000 Feet



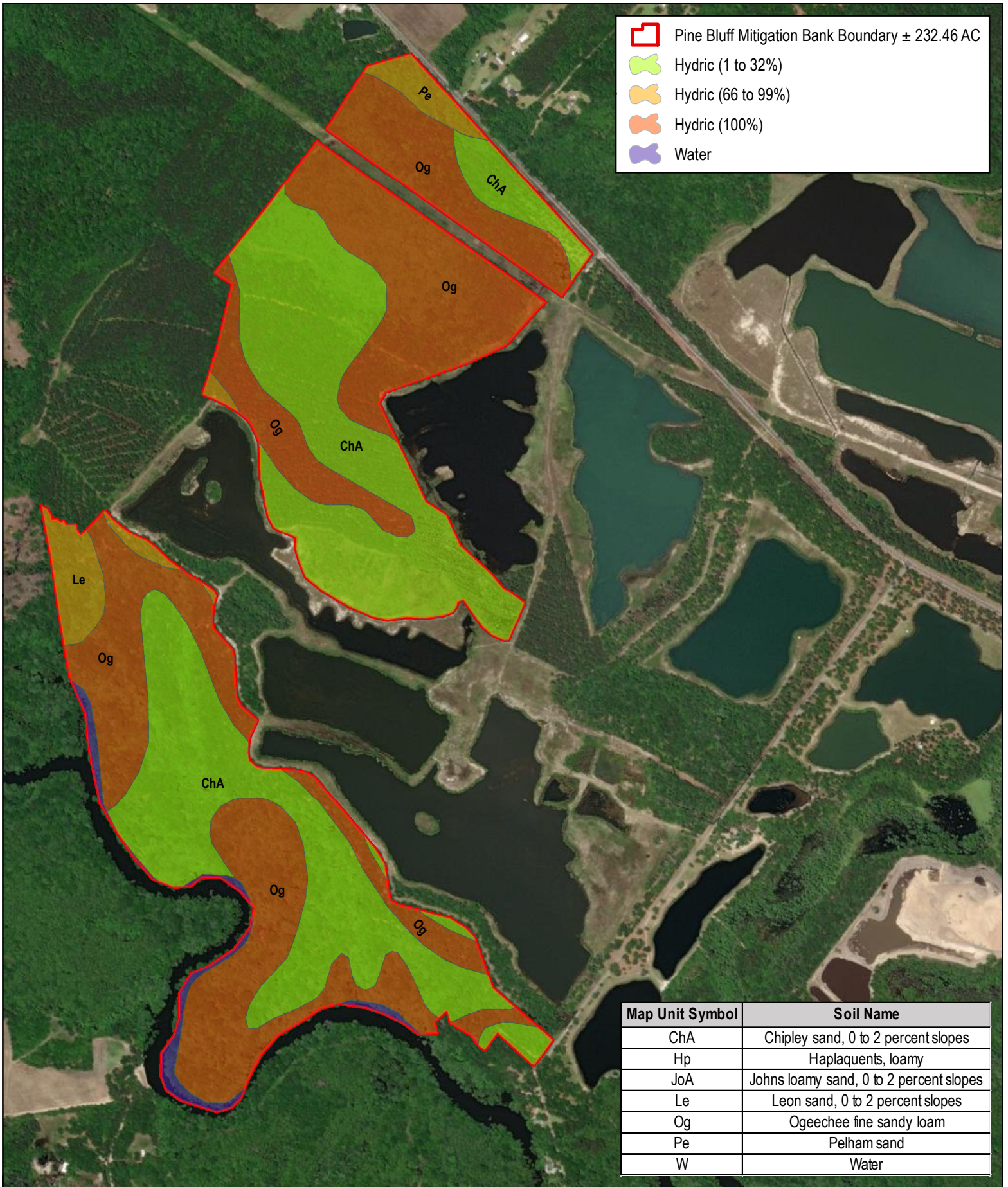
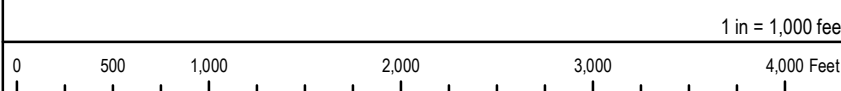


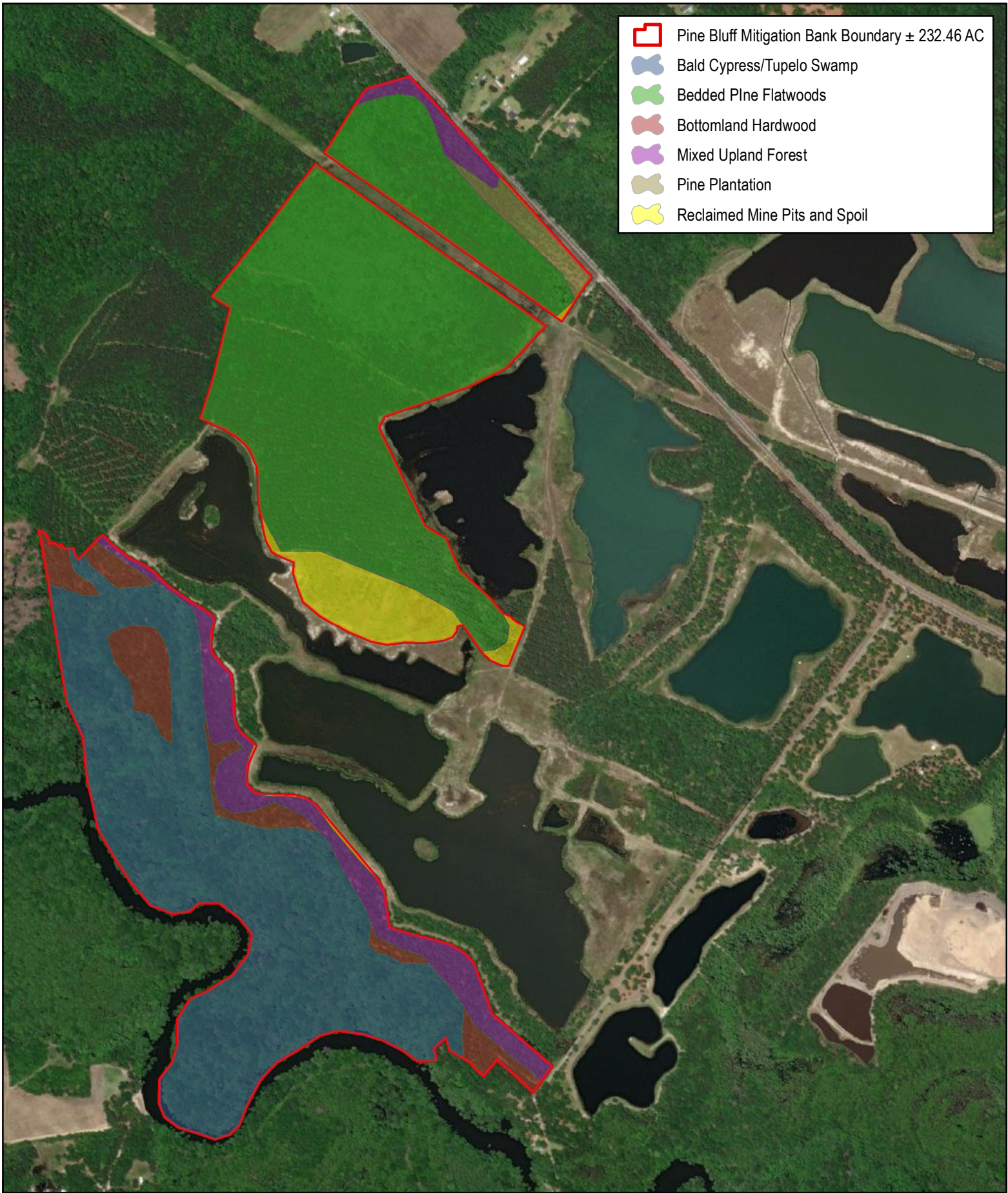
Figure 9
NRCS Soil Map
 Pine Bluff Mitigation Bank
 Edisto River Watershed
 Dorchester County, SC
 Source: ESRI, NRCS
 Date: October 2020

Notes:



1 in = 1,000 feet





-  Pine Bluff Mitigation Bank Boundary ± 232.46 AC
-  Bald Cypress/Tupelo Swamp
-  Bedded Pine Flatwoods
-  Bottomland Hardwood
-  Mixed Upland Forest
-  Pine Plantation
-  Reclaimed Mine Pits and Spoil

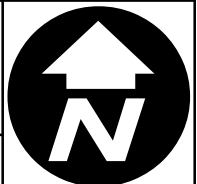


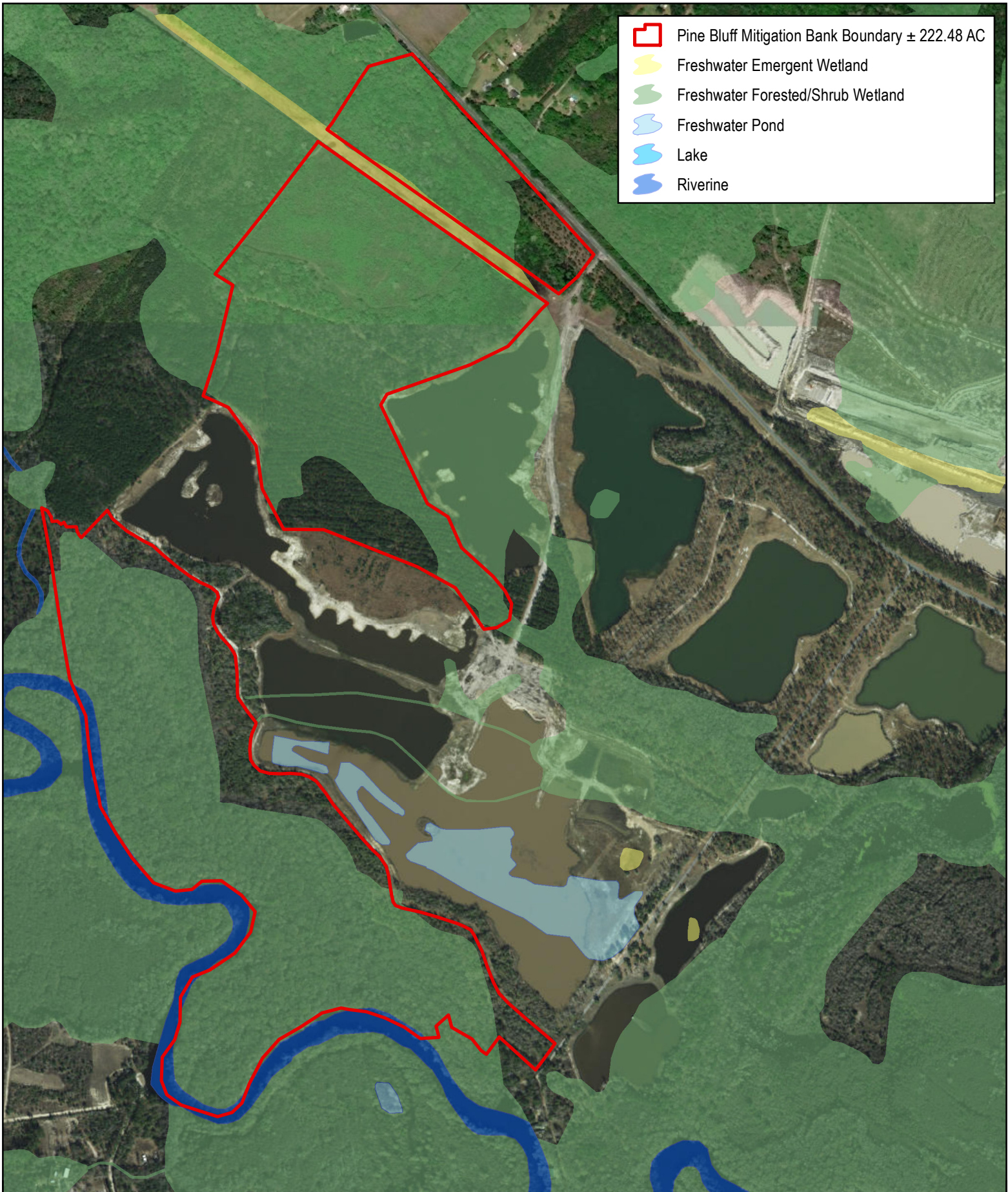
Figure 10
Vegetation Community Map
 Pine Bluff Mitigation Bank
 Edisto River Watershed
 Dorchester County, SC
 Source: ESRI
 Date: March 2022







Notes:

1 in = 1,000 feet

0 500 1,000 2,000 3,000 4,000 Feet





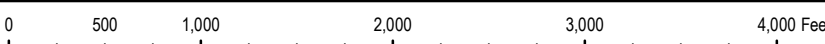
-  Pine Bluff Mitigation Bank Boundary ± 222.48 AC
-  Freshwater Emergent Wetland
-  Freshwater Forested/Shrub Wetland
-  Freshwater Pond
-  Lake
-  Riverine







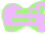






National Wetland Inventory Map
 Pine Bluff Mitigation Bank
 Edisto River Watershed
 Dorchester County, SC
 Source: ESRI, USFWS
 Date: June 2020

Notes:

1 in = 1,000 feet




	Pine Bluff Mitigation Bank Boundary ± 232.46 AC		Upland Buffer Preservation ± 23.54 AC		Rain Gauge
	Unit 2: Wetland Preservation ± 98.30 AC		Upland Buffer Enhancement ± 1.52 AC		Ditch
	Unit 3: Wetland Vegetation Enhancement ± 86.91 AC		Vegetation Quadrat		Groundwater Well
	Unit 4: Wetland Vegetation and Hydrology Enhancement ± 22.03 AC				
	Unit 1: Stream Preservation (Edisto River) ± 5,393 LF				

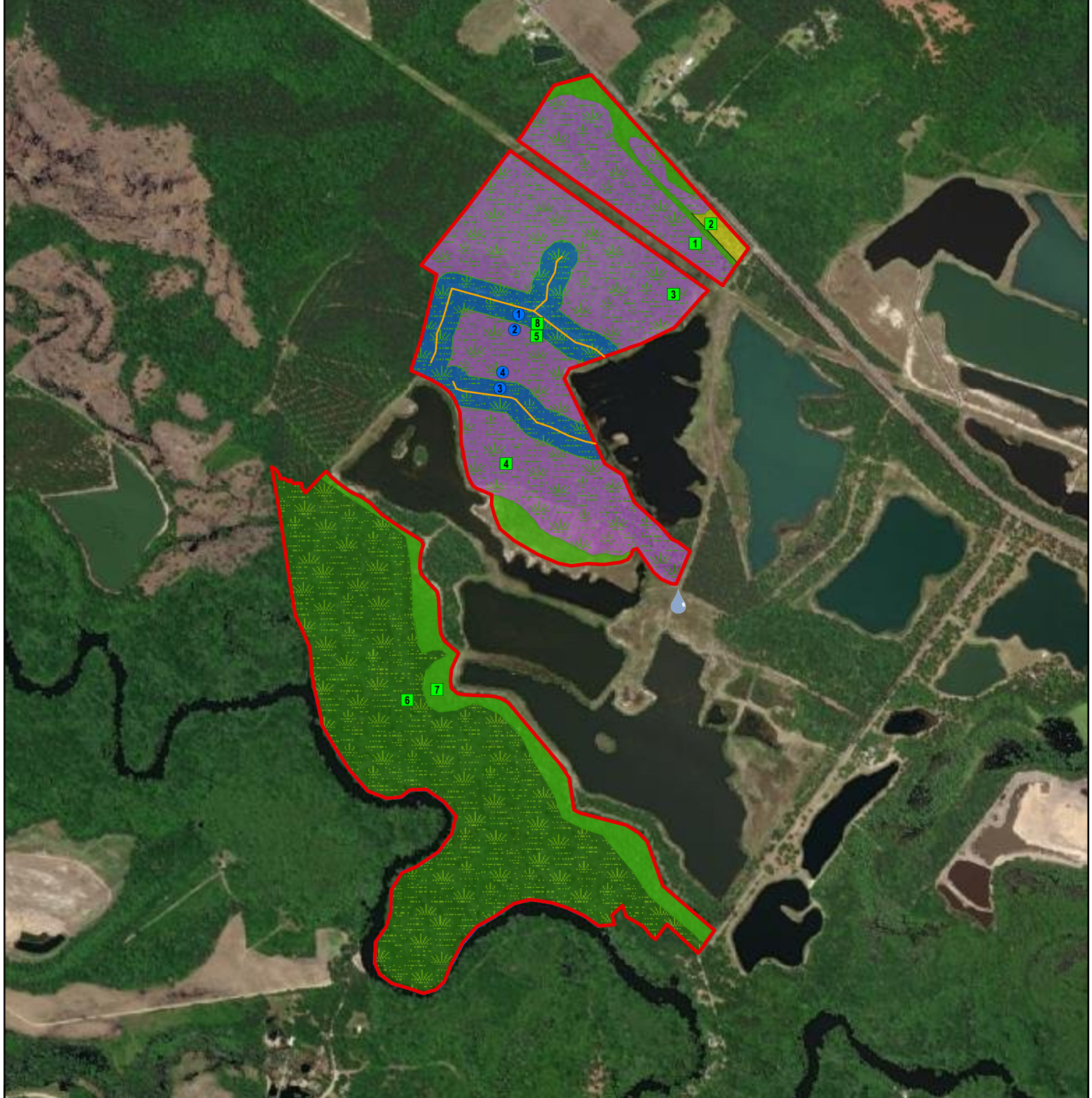
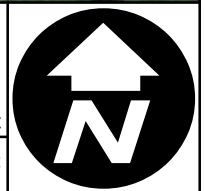


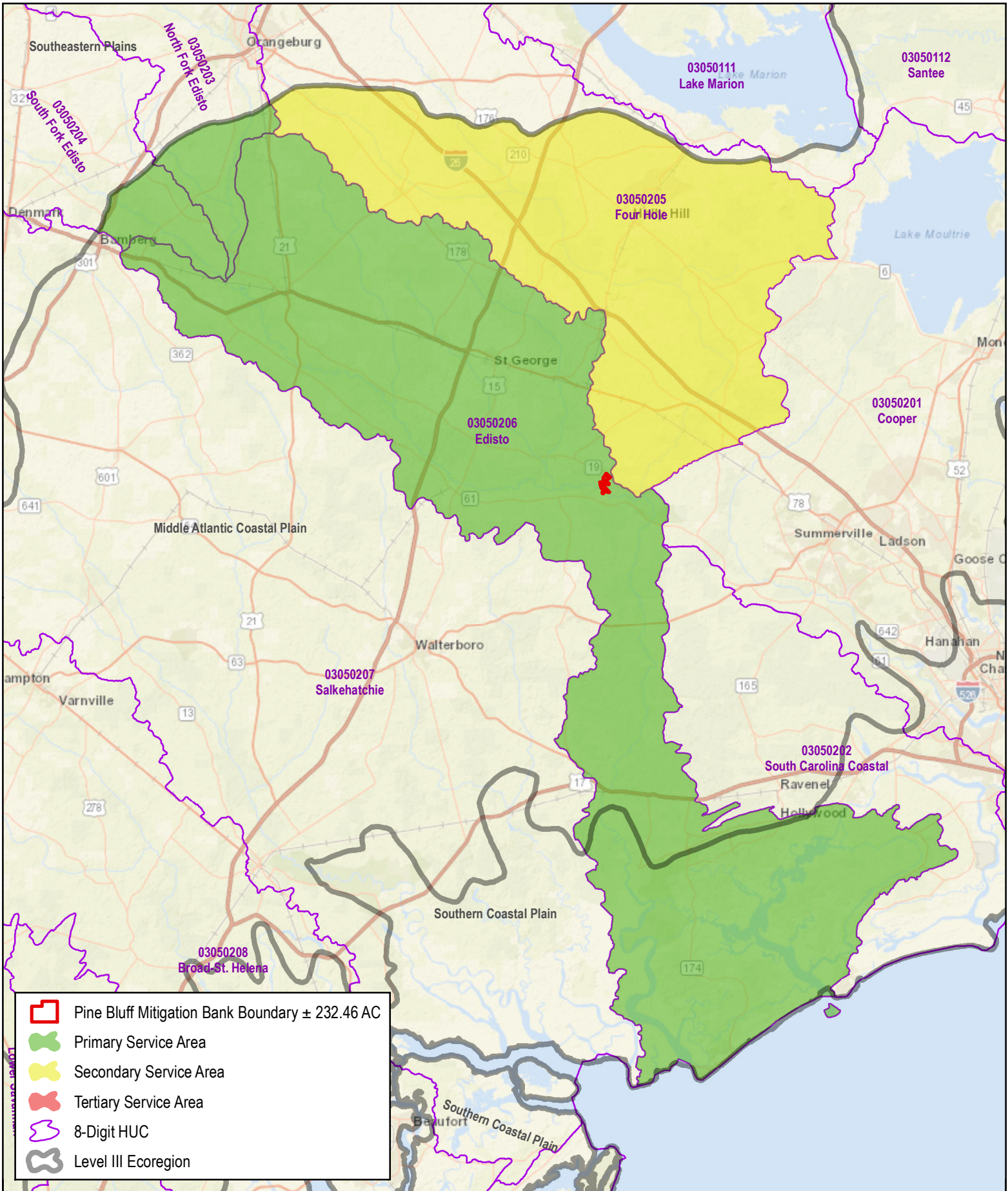
Figure 12
Baseline Monitoring Map
 Pine Bluff Mitigation Bank
 Edisto River Watershed
 Dorchester County, SC
 Source: ESRI
 Date: March 2022

Notes: ATV trails within Pine Bluff Mitigation Bank Boundary will be decommissioned.

1 in = 1,250 feet

0 625 1,250 2,500 3,750 5,000 Feet











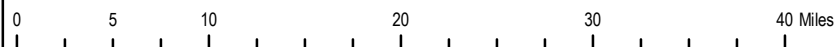
	Pine Bluff Mitigation Bank Boundary ± 232.46 AC
	Primary Service Area
	Secondary Service Area
	Tertiary Service Area
	8-Digit HUC
	Level III Ecoregion

Figure 13
Service Area Map
 Pine Bluff Mitigation Bank
 Edisto River Watershed
 Dorchester County, SC
 Source: ESRI
 Date: March 2022

Notes:



1 in = 10 miles

